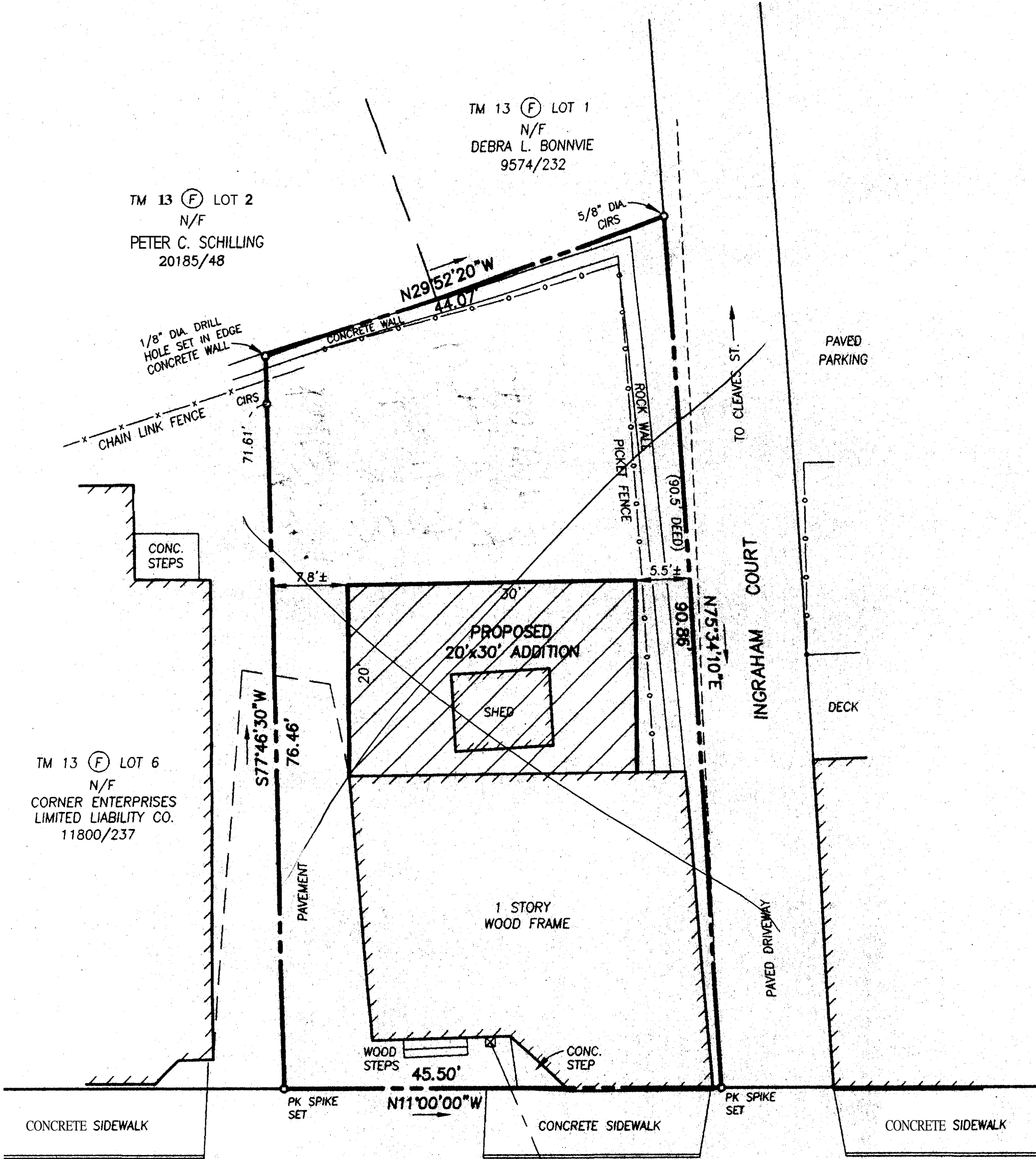


TM 13 (F) LOT 1
N/F
DEBRA L. BONNVIE
9574/232

TM 13 (F) LOT 2
N/F
PETER C. SCHILLING
20185/48

TM 13 (F) LOT 6
N/F
CORNER ENTERPRISES
LIMITED LIABILITY CO.
11800/237



WASHINGTON AVENUE
PAVED - PUBLIC 66' WIDE

Scale 1" = 10'
Original on file.
with Miss Hopkins

⊗
WV

⊗

N/F
DEBRA L. BONNIE
9574/32

TM 13 (F) LOT 2
N/F
PEI HILLING
20185/48

Residential

1/8" DIA. DRILL HOLE SET IN EDGE CONCRETE WALL

CHAIN LINK FENCE

71.61'

N29°52'20"W
44.07'

5/8" DIA. CIPS

*23' scaled
20' min required*

TO CLEAVES ST.

PAVED PARKING

CONC STEPS

10.3 ±

28

PROPOSED 28'x24' ADDITION

SHEED

67.2' 8.4'

28

N75°34'10"E
90.86'

*No setback
required
see this*

INGRAHAM

DECK

TM 13 (F) LOT 6
N/F
CORNER ENTERPRISES
LIMITED LIABILITY CO.
11800/237

*1st floor
Residential*

PAVEMENT

*NO LESS
THAN 10' AT THE
CLOSEST POINT*

1 STORY

1094

PAVED DRIVEWAY

WOOD STEPS

45.50'

CONC. STEP

CONCRETE SIDEWALK

PK SPIKE SET

N11°00'00"W

CONCRETE SIDEWALK

PK SPIKE SET

CONCRETE SIDEWALK

CV

30 WASHINGTON AVENUE

PAVED - PUBLIC 66' WIDE



041323

*90% impervious max
OK*

*retail
just 2,000 sq ft
does not require
8th street pad*

showing 1771 sq ft

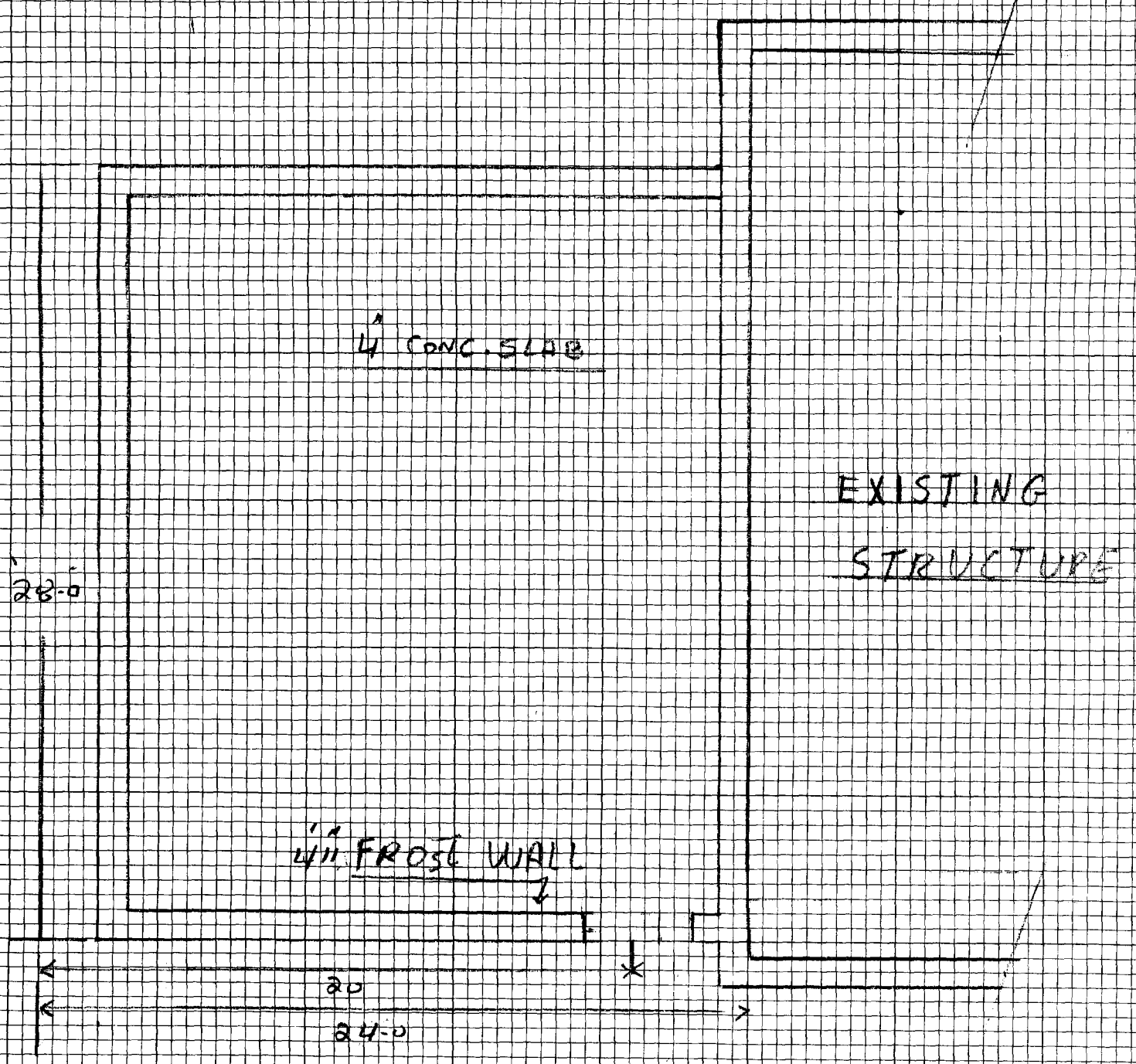
1" = 10'

1 of 2 Book: 1712 30 WASHINGTON AVE
PAGE: 261 PORTLAND, ME

TIMOTHY & MONITA SEAVEY
ADDITION

GREENLAND CONSTRUCTION
207-318-8449

DEPT. OF BUILDING INSPECT
CITY OF PORTLAND, ME
SEP 17 2004
REVIEW



FOUNDATION PLAN

30 Washington Ave

