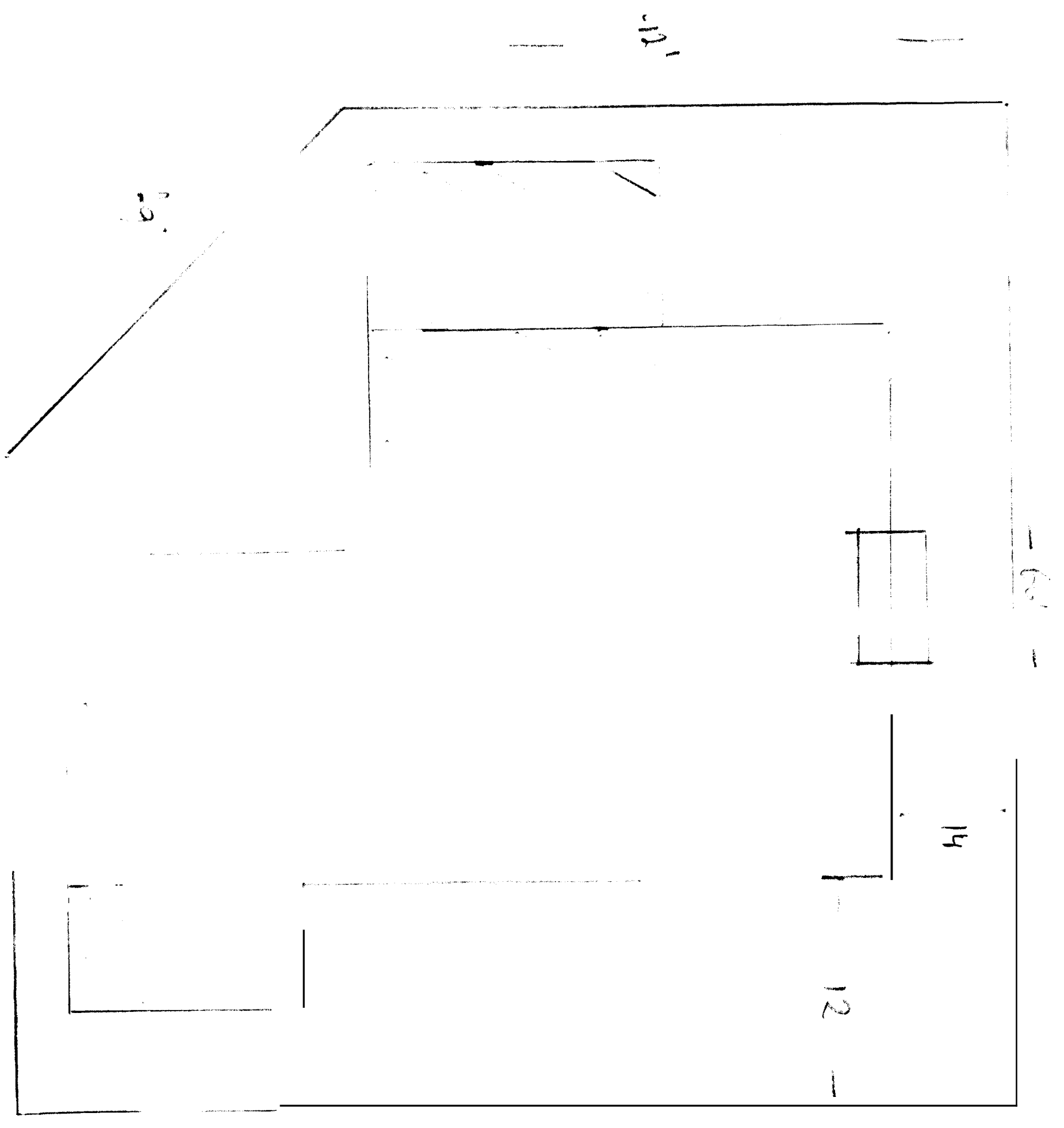


22 Clifford St



Prof. Clifford  
G. B. Y.

SEP 12

9:19 AM 2/3/15  
L. B. Y.





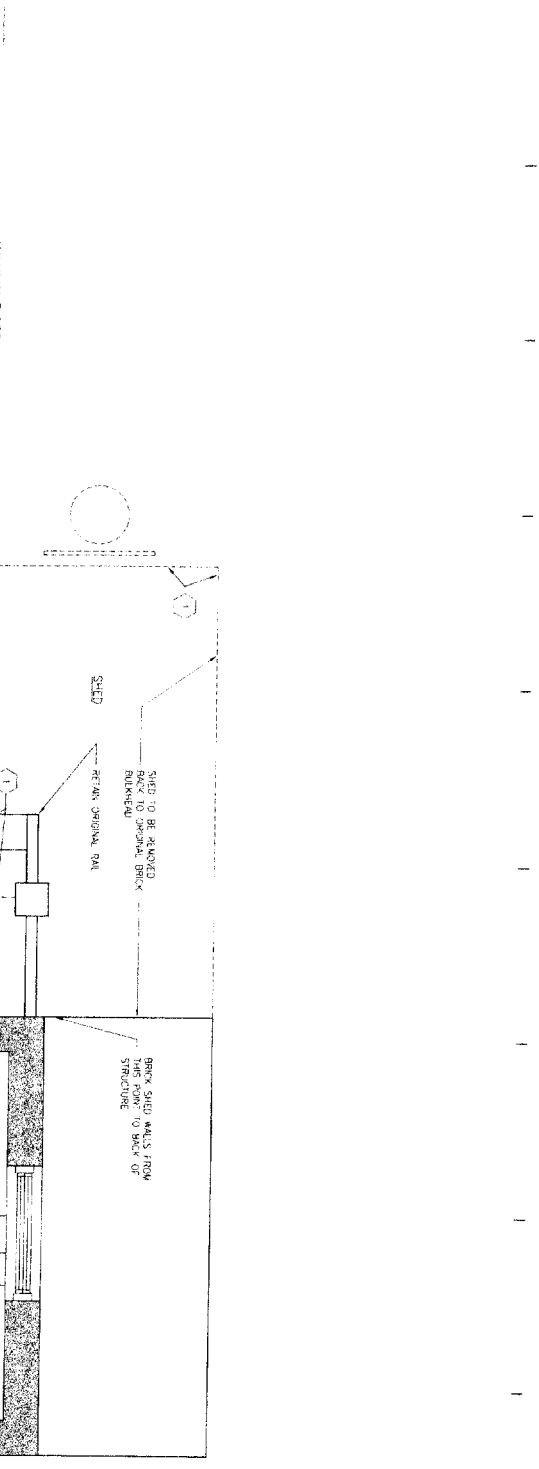
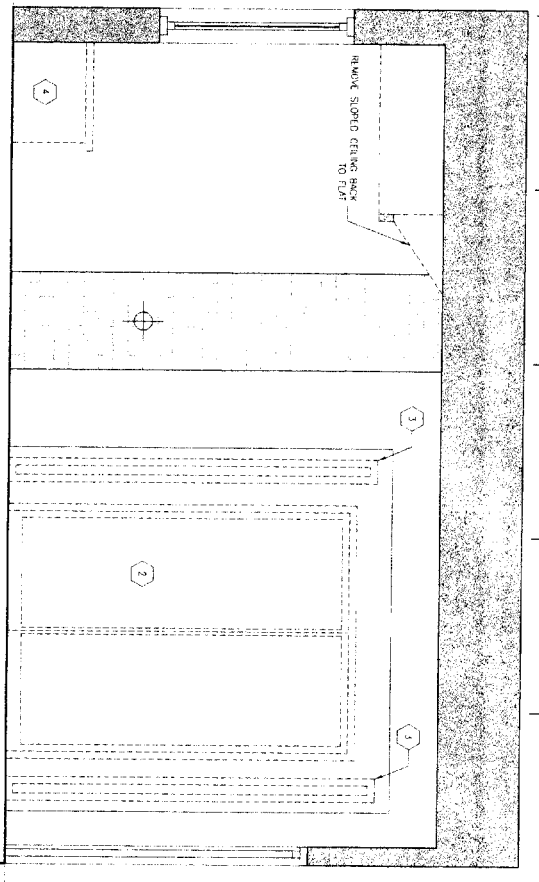


STEELE RESIDENCE  
22 CLIFFORD STREET  
PORTLAND, MAINE

TITLE  
FIRST  
FLOOR  
DEMO

Project No. 200410  
Date AUGUST 18, 2004  
Revisions: REVISION/A  
AUGUST 18, 2004  
Issued For: CONSTRUCTION  
Drawing No.

D11



- QUANTIFIABLE DEMOS
- 1 REMOVE WALL
  - 2 REMOVE DOOR
  - 3 REMOVE WINDOW
  - 4 REMOVE BUILT-IN
  - 5 REMOVE EXISTING PLUMBING FIXTURE
  - 6 REMOVE EXISTING APPLIANCE
  - 7 REMOVE EXISTING FLOORING
  - 8 REMOVE EXISTING ILC WALL
  - 9 REMOVE WOOD WAINSCOT AT DOOR & TO FIRST FILL PANEL LA SIDE
  - 10 REMOVE CARPET
  - 11 REMOVE POOR FOR FURNISH S. SALVAGE FOR POSSIBLE REUSE

1 FIRST FLOOR DEMO PLAN  
1/2\"/>



**STEELE RESIDENCE**  
**22 CLIFFORD STREET**  
PORTLAND, MAINE

Title

**SECOND  
FLOOR  
DEMO**

Project No. 200410

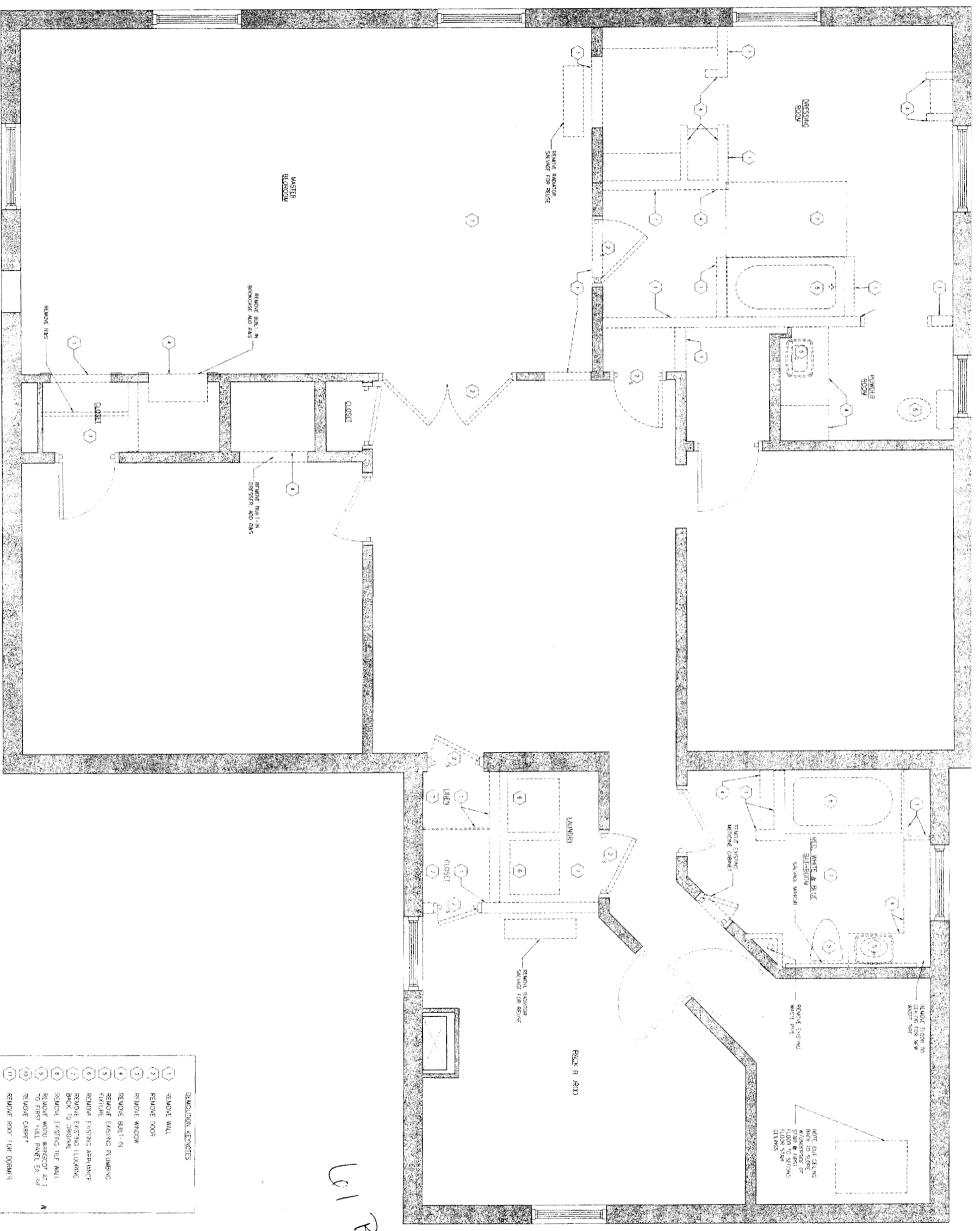
Date AUGUST 18, 2004

Revisors REVISION  
AUGUST 18, 2004

Issued For CONSTRUCTION

Drawing No.

**D1.2**



61 B 4

**DEMOLITION ELEMENTS**

- 1 REMOVE WALL
- 2 REMOVE DOOR
- 3 REMOVE WINDOW
- 4 REMOVE BUILT-IN FUTURE
- 5 REMOVE EXISTING PLUMBING
- 6 REMOVE EXISTING APPLIANCE
- 7 REMOVE EXISTING TUBING BACK TO SHOWN
- 8 REMOVE EXISTING TILT WALL
- 9 REMOVE WOOD WAINSCOT AT 1 TO FIRST FLOOR PANEL EA. SF REMOVE CARPET
- 10 REMOVE ROOF FOR DORMER
- 11 S - SALVAGE FOR POSSIBLE BRUSH



STEELE RESIDENCE  
22 CLIFFORD STREET  
PORTLAND, MAINE

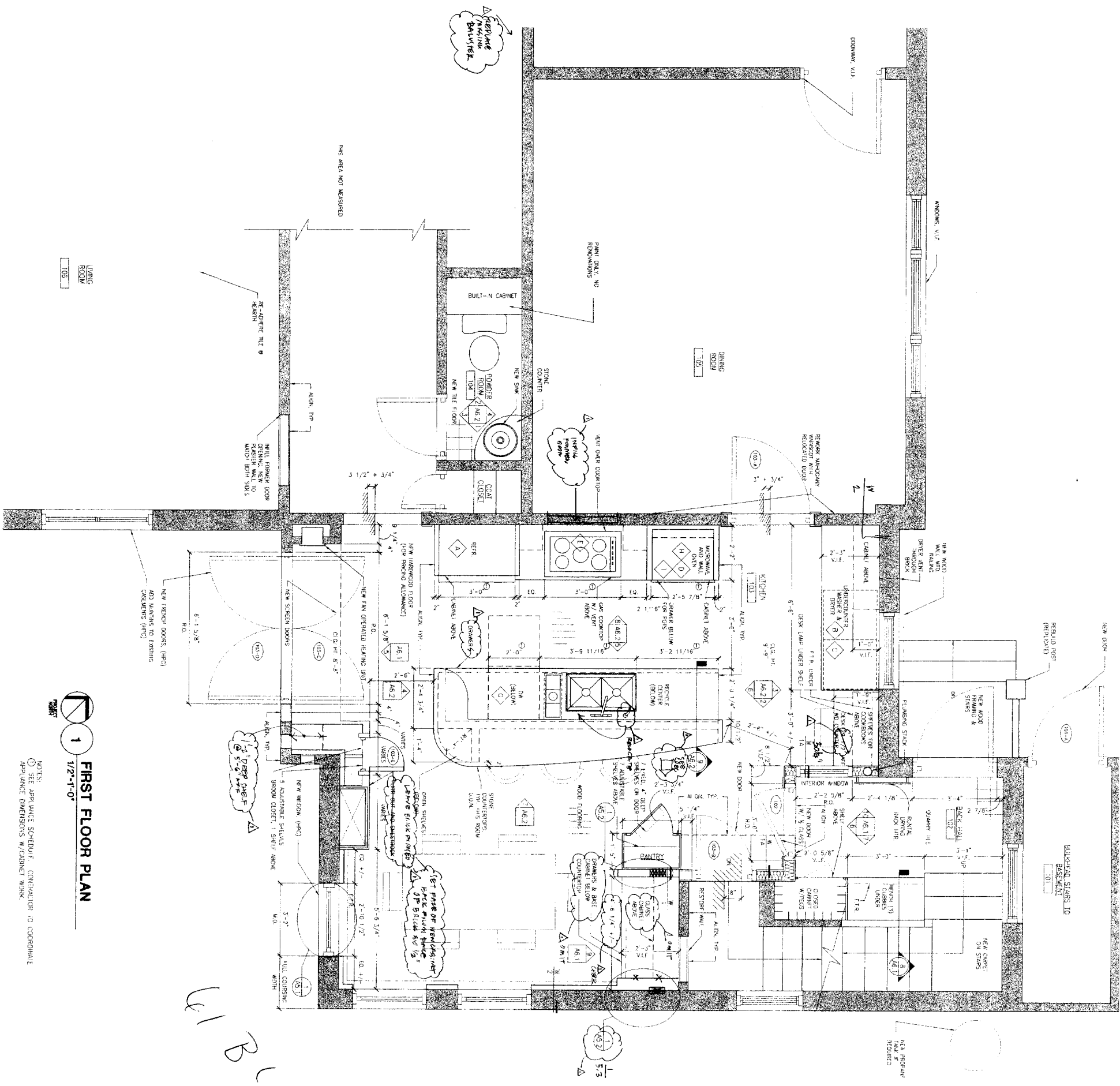
Title:  
FIRST FLOOR

Project No: 200410  
Date: AUGUST 18, 2004  
Revisions: REVISION 1  
AUGUST 18, 2004

Issued For: CONSTRUCTION

Drawing No:

A11



1 1/2"=1'-0" FIRST FLOOR PLAN

NOTES:  
1 SEE APPLIANCE SCHEDULE, CONSTRUCTION, & COORDINATE APPLIANCE DIMENSIONS W/ CABINET WORK



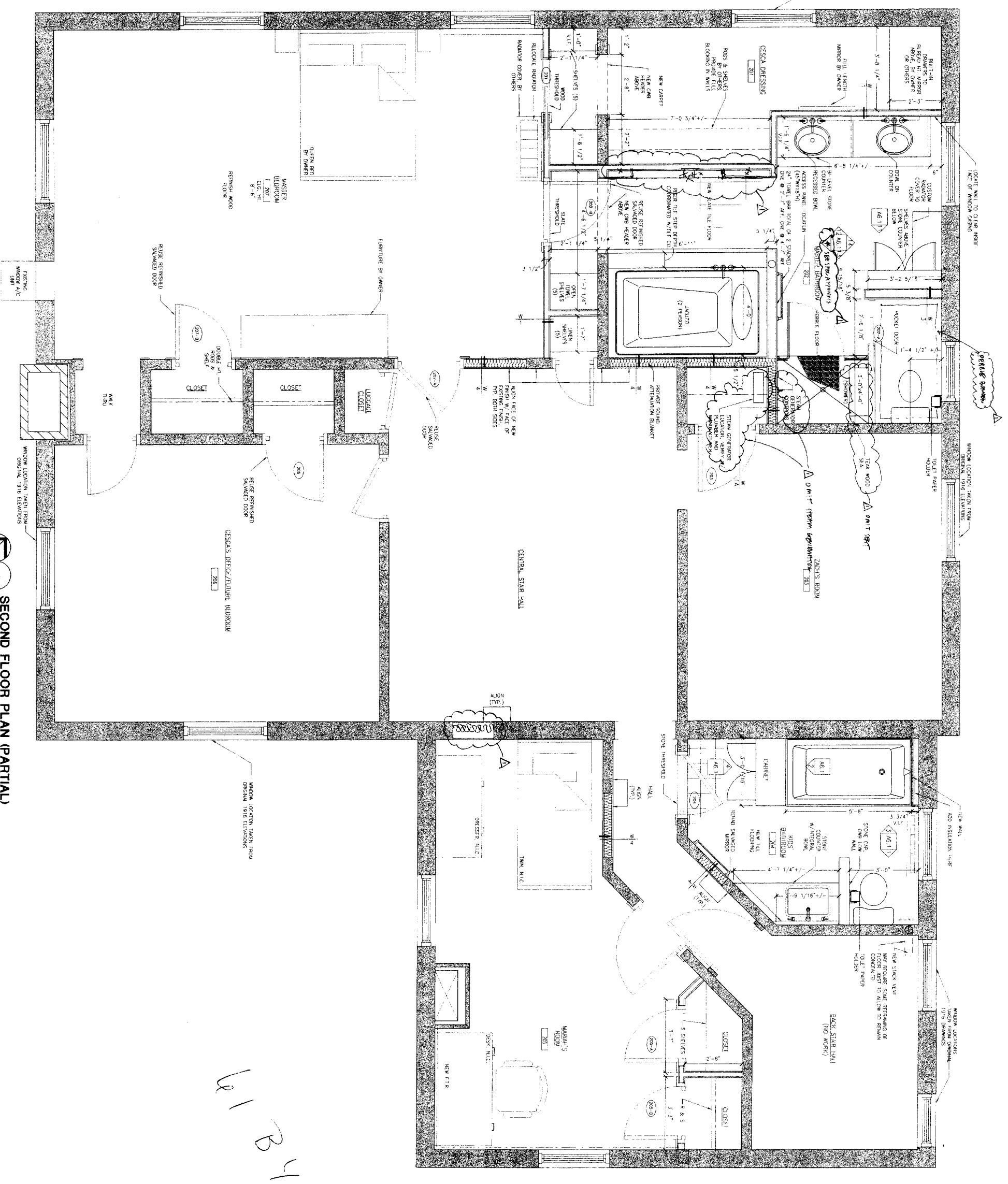
**STEELE RESIDENCE**  
**22 CLIFFORD STREET**  
PORTLAND, MAINE

Title  
**SECOND FLOOR**

Project No. 200410  
Date AUGUST 18, 2004  
Revisions: REVISION A  
AUGUST 18, 2004

Issued For CONSTRUCTION  
Drawing No.

**A1.2**



61 B4







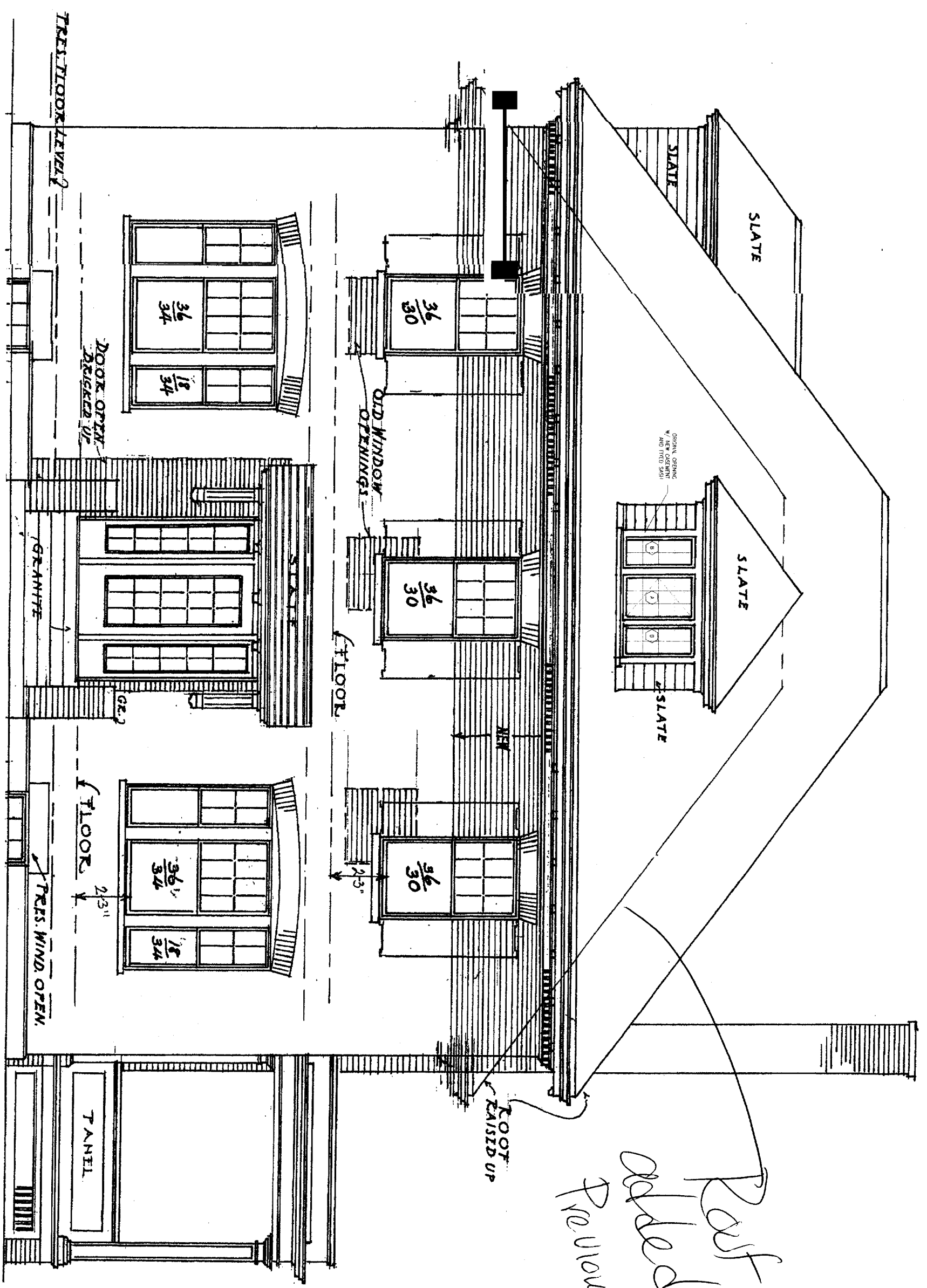
STEELE RESIDENCE  
22 CLIFFORD STREET  
PORTLAND, MAINE

Title:  
ELEVATIONS  
FRONT

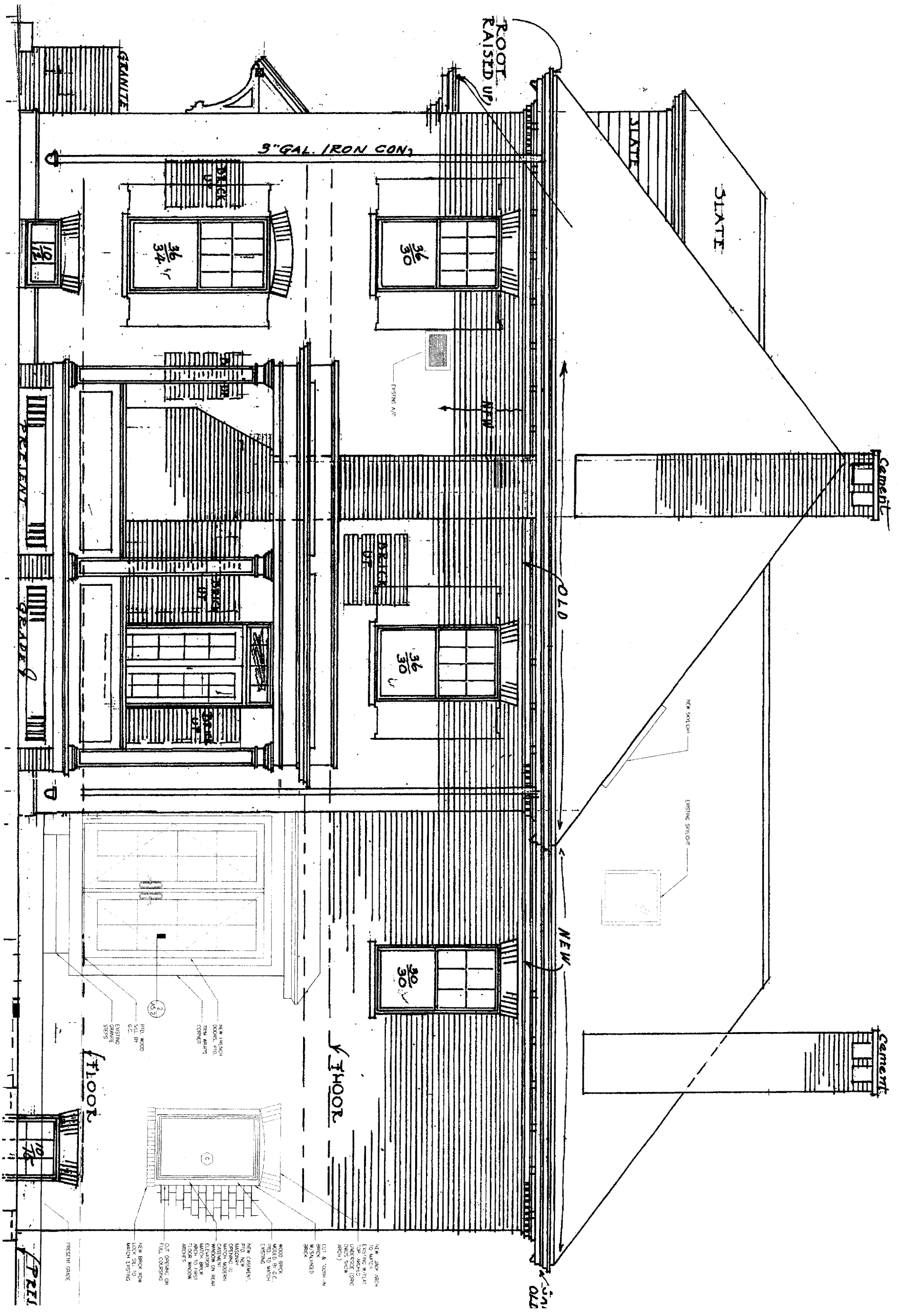
Project No. 200410  
Date AUGUST 18, 2004  
Revisions REVISION A  
AUGUST 18, 2004

Issued For: CONSTRUCTION  
Drawing No.

*Roof added previously*



1 FRONT ELEVATION  
1/2" = 1'-0"

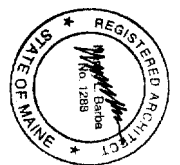


1 RIGHT SIDE ELEVATION  
1/2"=1'-0"

BARBARA WHELFLOCK

ARCHITECTURE  
PRESERVATION  
DESIGN

500 CONGRESS STREET  
PORTLAND, MAINE 04101  
FAX 207.772.2827  
TEL 207.772.2722



STEELE RESIDENCE  
22 CLIFFORD STREET  
PORTLAND, MAINE

A2.2



STEELE RESIDENCE  
22 CLIFFORD STREET  
PORTLAND, MAINE

Title  
ELEVATIONS  
LEFT SIDE

Project No: 2004110  
Date: AUGUST 18, 2004  
Revisions: REVISION A  
AUGUST 18, 2004

Issued For: CONSTRUCTION  
Drawing No:

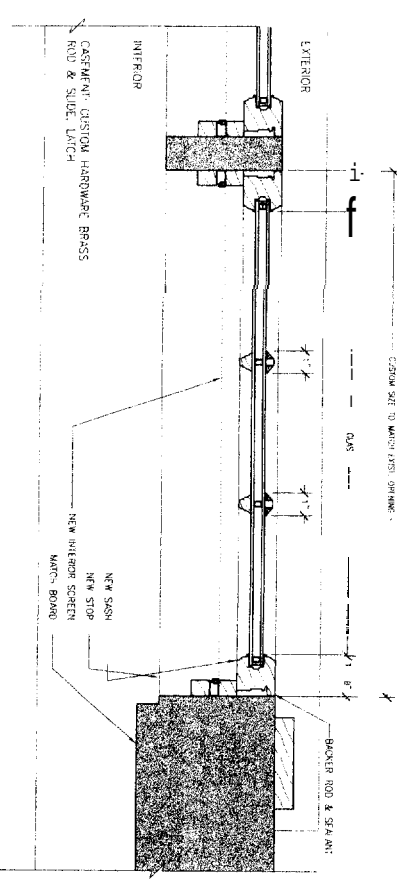
A2.3



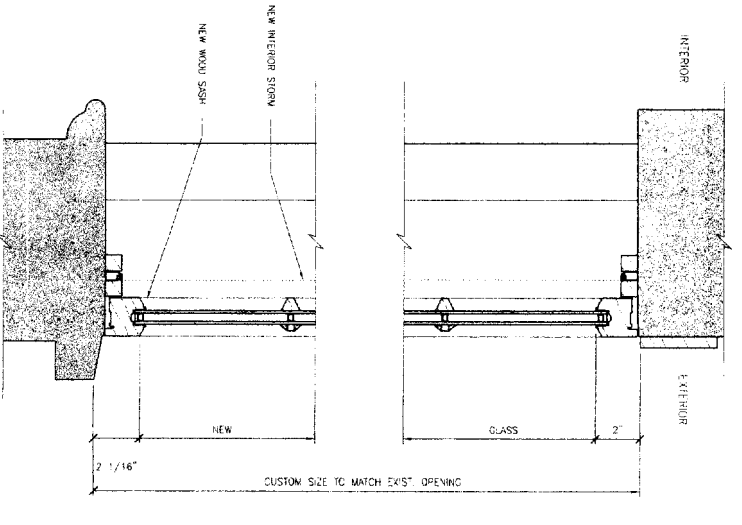
1 LEFT SIDE ELEVATION  
1/2"=1'-0"



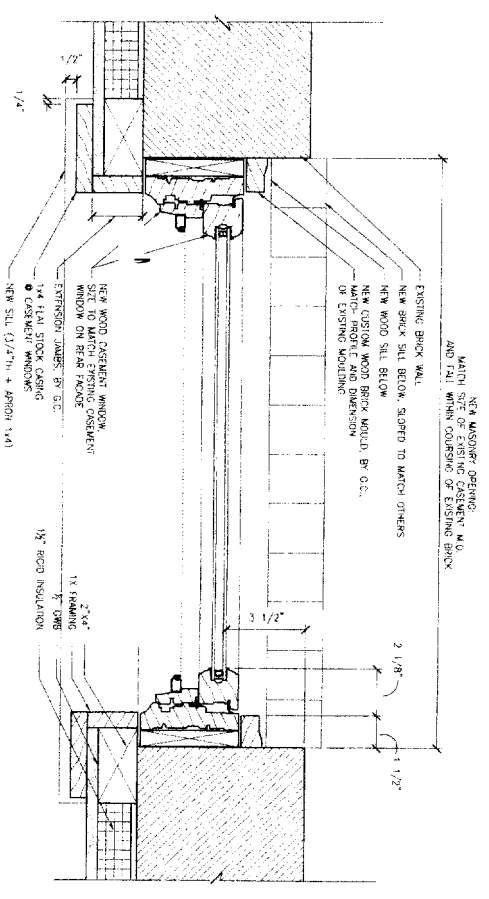
STEELE RESIDENCE  
22 CLIFFORD STREET  
PORTLAND, MAINE



**3**  
WINDOW DETAIL AT EXISTING  
DORMER THIRD FLOOR, TYP. (PLAN)  
PHASE 2  
3'-1"-0"



**2**  
WINDOW DETAIL AT EXISTING  
DORMER THIRD FLOOR, TYP.  
PHASE 2  
3'-1"-0"



**1**  
WINDOW DETAIL AT NEW MASONRY  
OPENING (KITCHEN)  
PHASE 2  
3'-1"-0"

Title:

DETAILS

Project No: 2004.10  
Date: AUGUST 18, 2004  
Revisions: REVISION 1  
AUGUST 18, 2004  
Issued For: CONSTRUCTION

Drawing No:

A5.1



STEELE RESIDENCE  
22 CLIFFORD STREET  
PORTLAND, MAINE

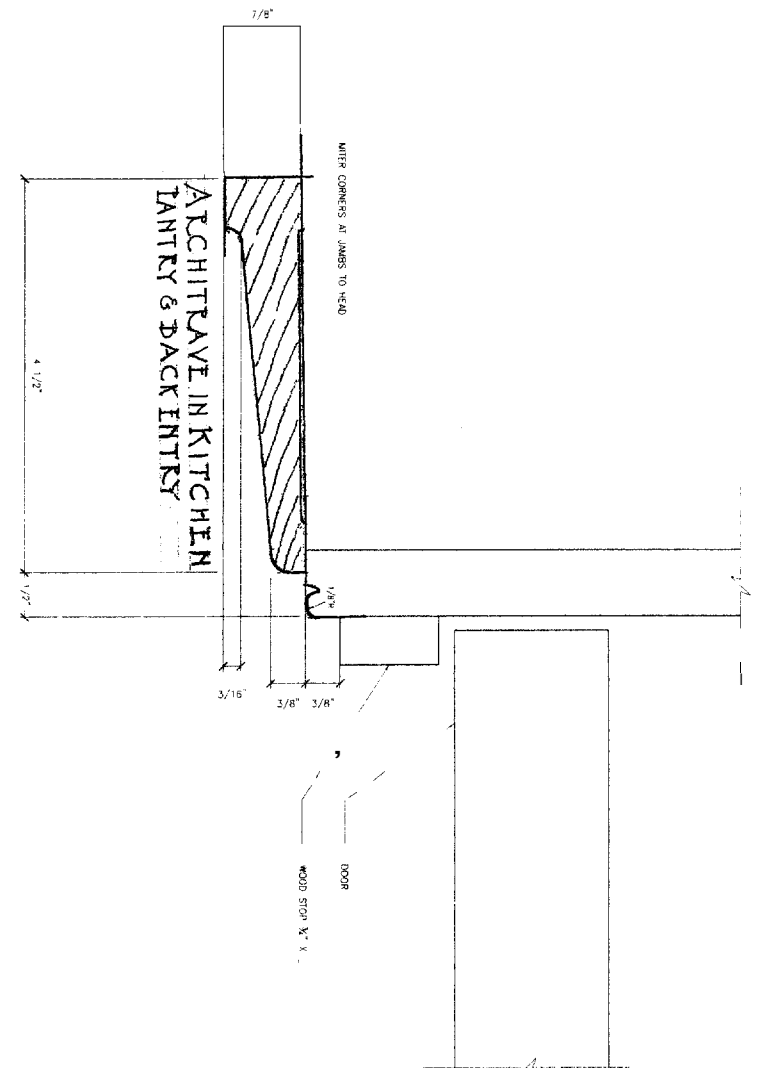
Title:  
KITCHEN DOORWAY  
DETAILS

Project No: 200410  
Date: AUGUST 18, 2004  
Revisions: REVISION  
AUGUST 18, 2004

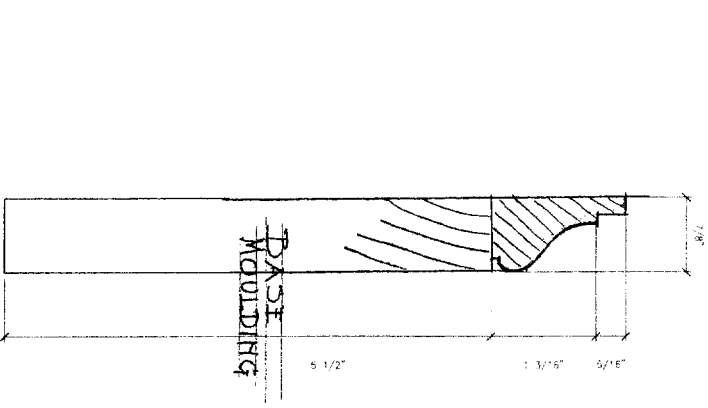
Issued For: CONSTRUCTION

Drawing No:

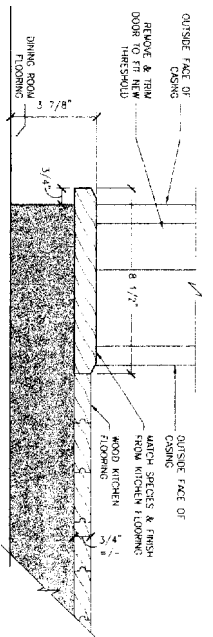
A52



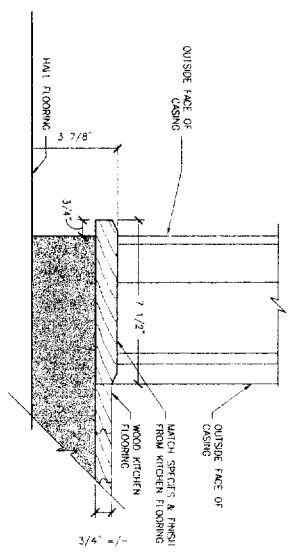
6 WOOD CASING FOR KITCHEN FROM ORIG. KITCHEN DETAILS  
FL. SCALE



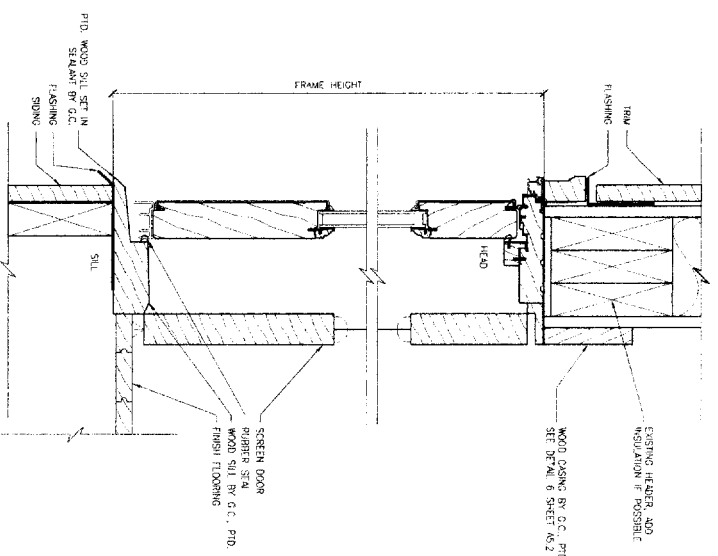
5 BASEBOARD FOR KITCHEN FROM ORIG. KITCHEN DETAILS  
FL. SCALE



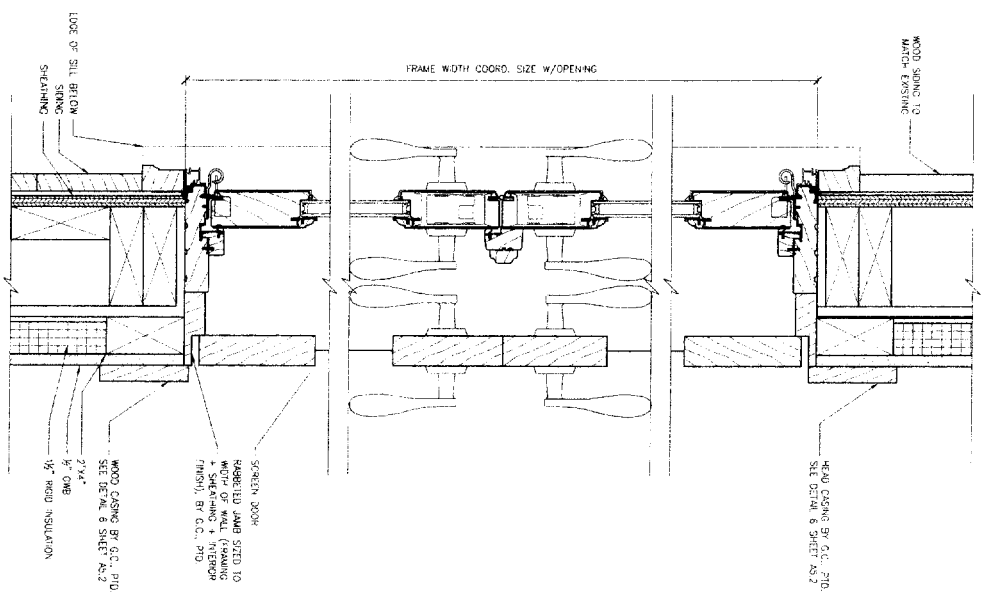
4 THRESHOLD SECTION DOORWAY TO DINING ROOM



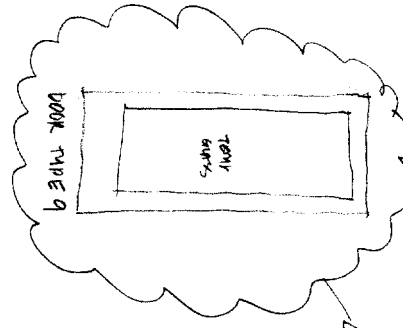
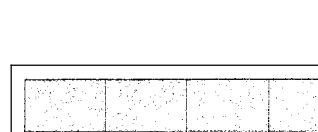
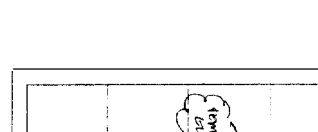
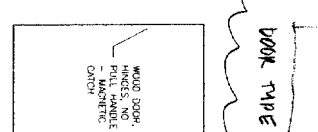
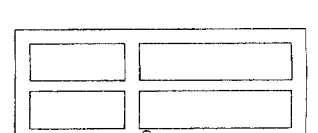
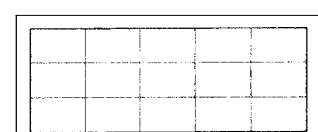
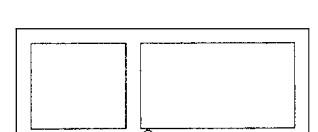
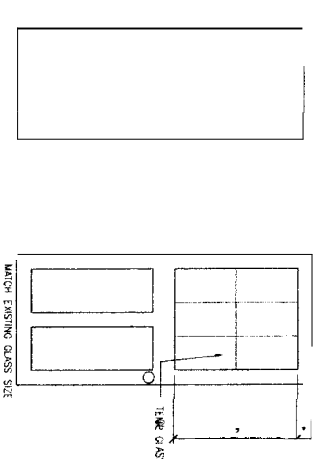
3 THRESHOLD SECTION DOORWAY TO HALLWAY  
3\"/>



2 SILL/HEADER SECTION OF FRENCH DOOR IN KITCHEN



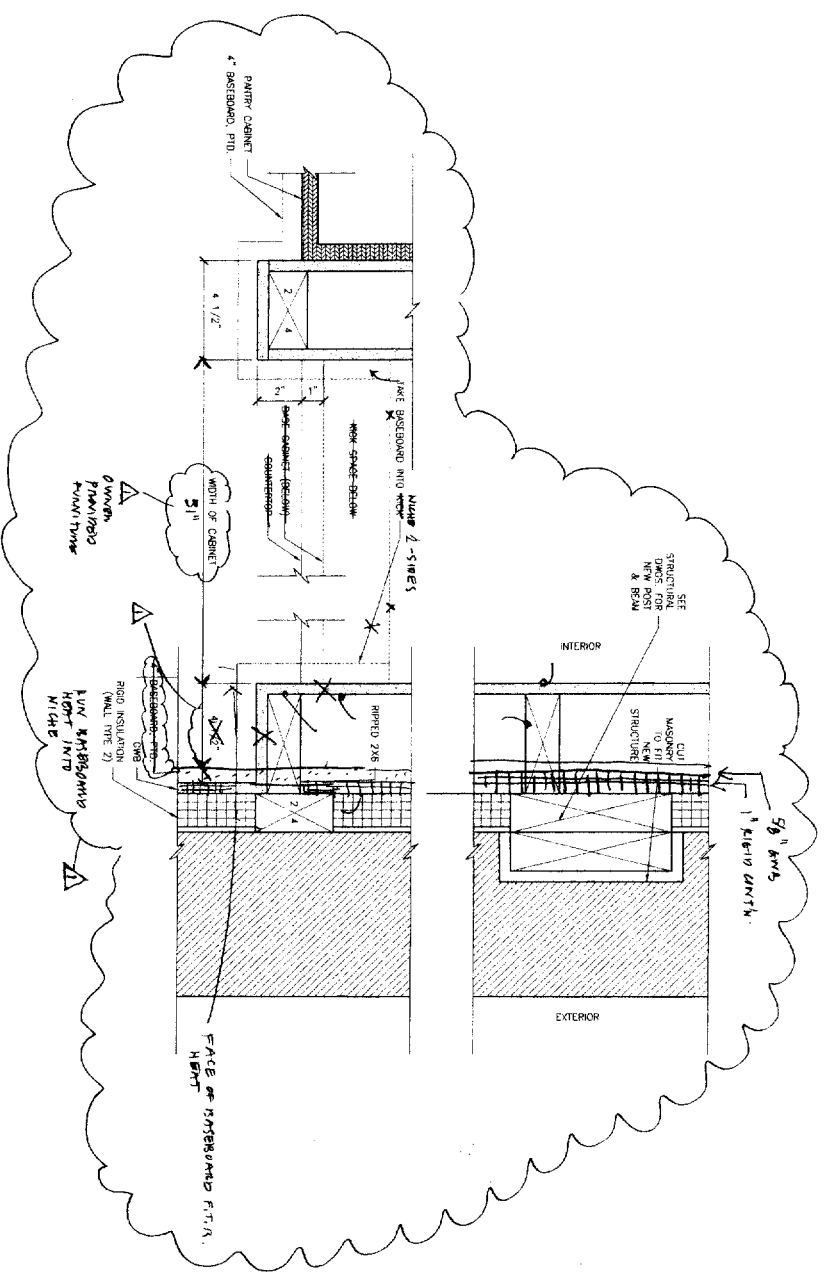
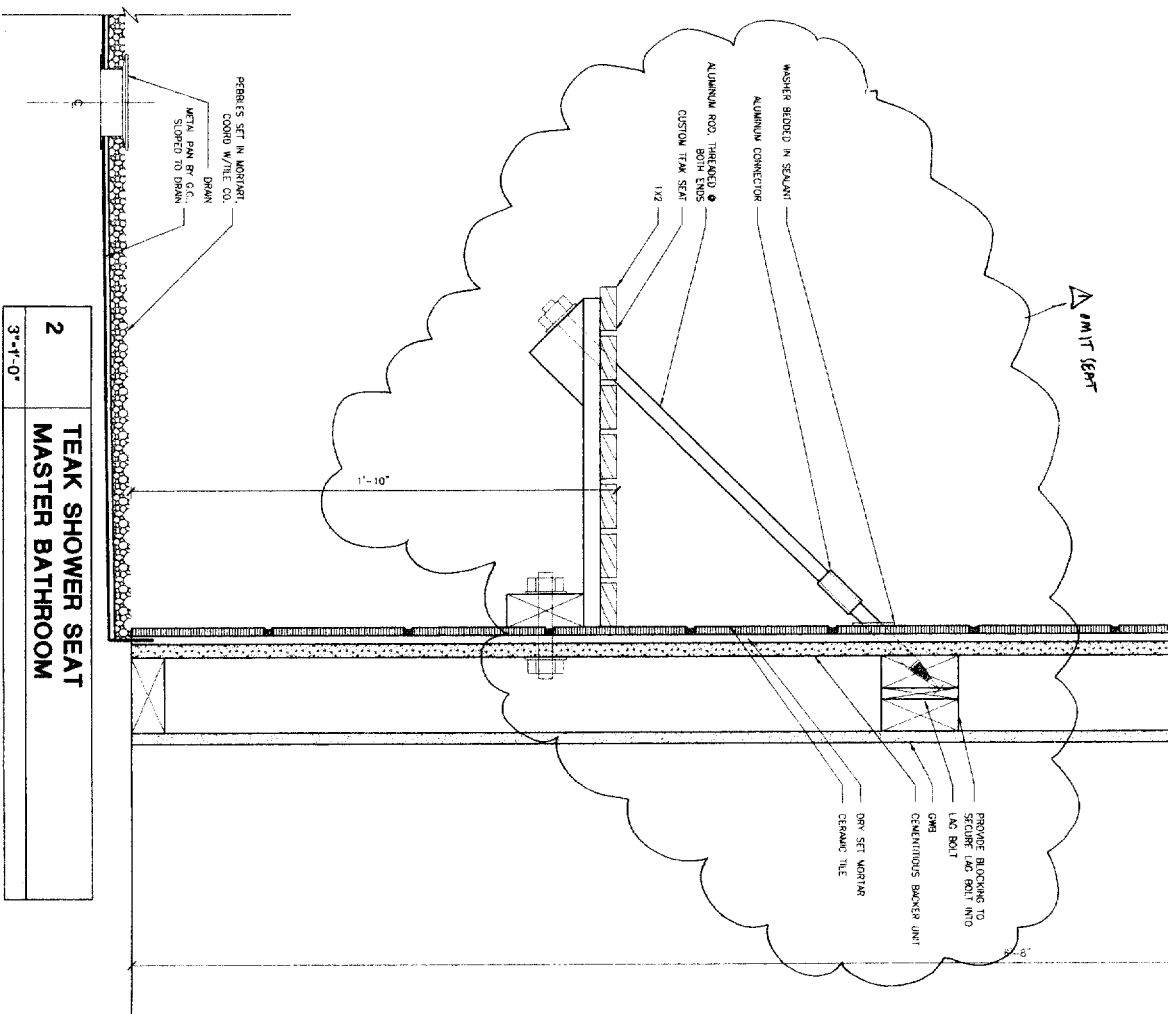
1 JAMB OF FRENCH DOOR IN KITCHEN



- DOOR TYPE 1
- DOOR TYPE 2
- DOOR TYPE 3
- DOOR TYPE 4
- DOOR TYPE 5
- DOOR TYPE 6
- DOOR TYPE 7
- DOOR TYPE 8

NOTE: DOOR TYPES INDICATED ARE FOR NEW DOORS. SALVAGED DOORS INTENDED FOR REUSE ARE NOT DRAWN IN ELEVATION. SEE DOOR SCHEDULE IN SPECIFICATION.

**3**  
1/2"-1'-0"  
**DOOR TYPES**



**2**  
3'-1'-0"  
**TEAK SHOWER SEAT  
MASTER BATHROOM**

**1**  
**FIRST FLOOR CABINET  
PLAN DETAILS**

**STEELE RESIDENCE  
22 CLIFFORD STREET  
PORTLAND, MAINE**

Title:  
**DOOR TYPES**

Project No. 200410  
Date: AUGUST 18, 2004  
Revisions: REVISION A  
AUGUST 18, 2004

Issued For: CONSTRUCTION  
Drawing No.

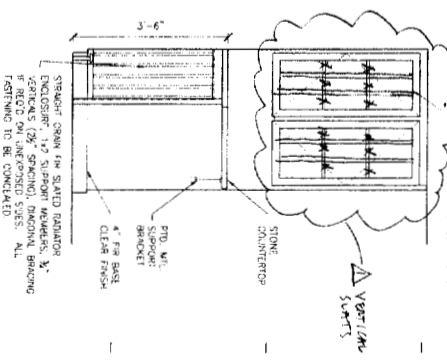


STEELE RESIDENCE  
22 CLIFFORD STREET  
PORTLAND, MAINE

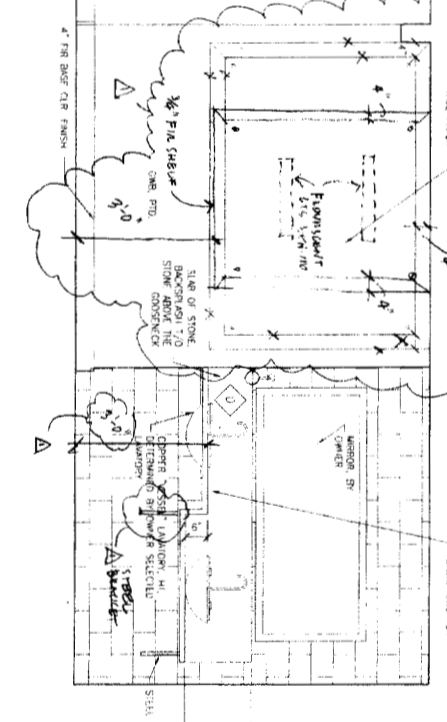
INTERIOR  
ELEVATIONS  
AND DETAILS

Title  
Project No: 200410  
Date: AUGUST 18, 2004  
Revisions: REVISION A  
AUGUST 18, 2004  
Issued For: CONSTRUCTION  
Drawing No:

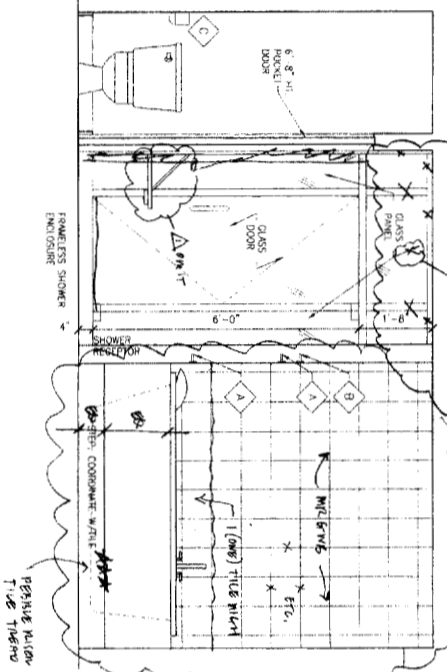
A6.1



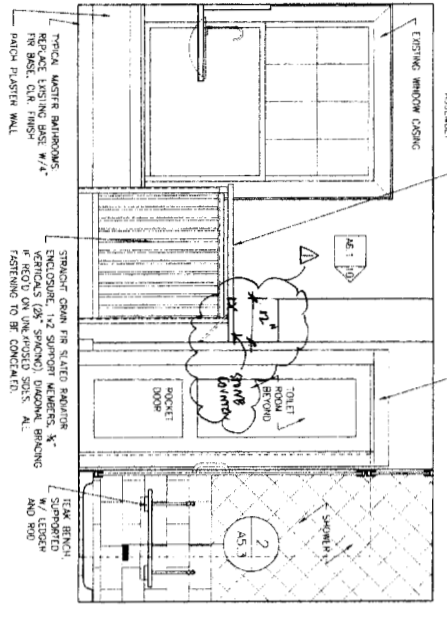
11 M. BATH ELEV.  
1/2"=1'-0"



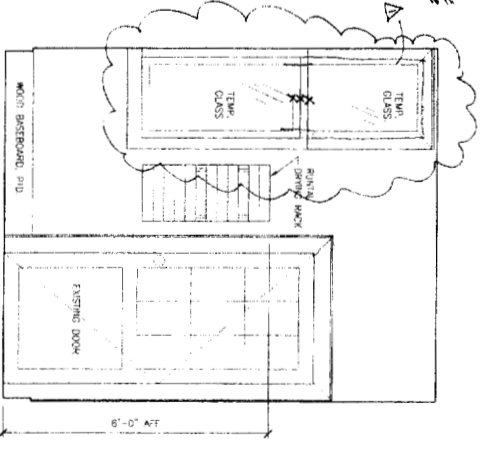
12 MASTER BATHROOM  
1/2"=1'-0"



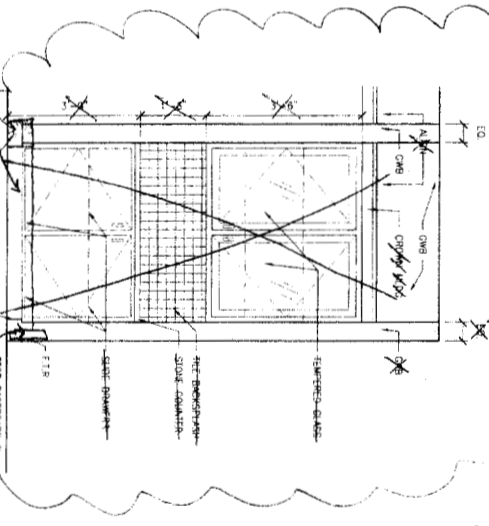
13 MASTER BATH ELEV.  
1/2"=1'-0"



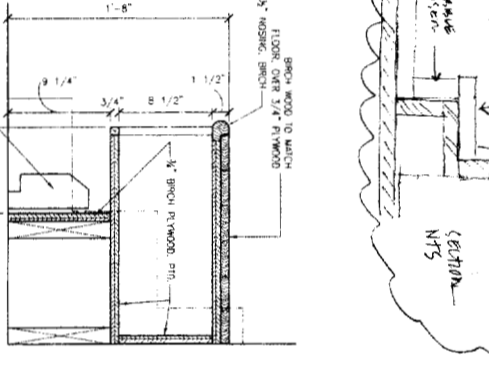
14 MASTER BATH ELEV.  
1/2"=1'-0"



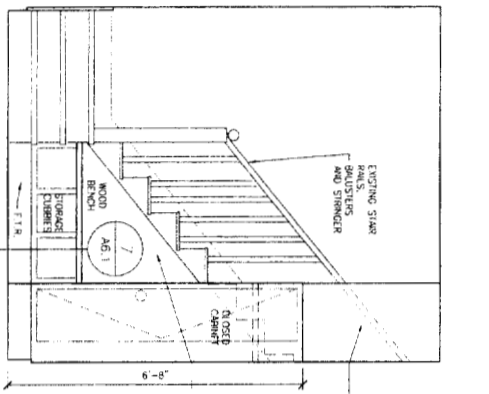
10 KITCHEN ENTRANCEWAY  
1/2"=1'-0"



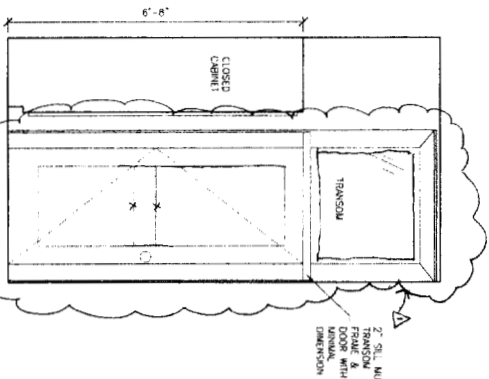
9 KITCHEN ELEV.  
1/2"=1'-0"



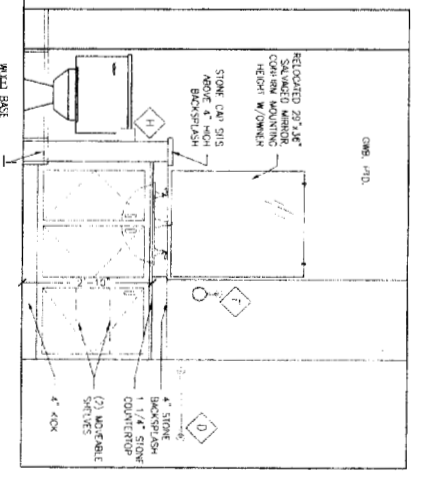
8 BENCH SECTION  
1 1/2"=1'-0"



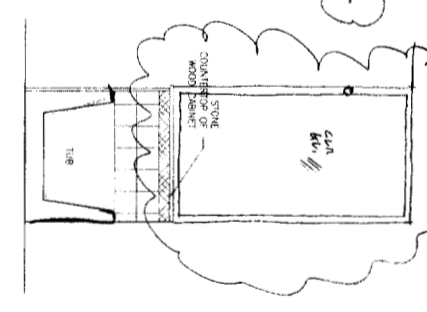
7 KITCHEN ENTRANCEWAY  
1/2"=1'-0"



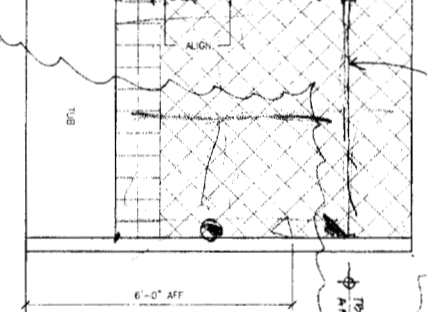
6 KITCHEN ENTRANCEWAY  
1/2"=1'-0"



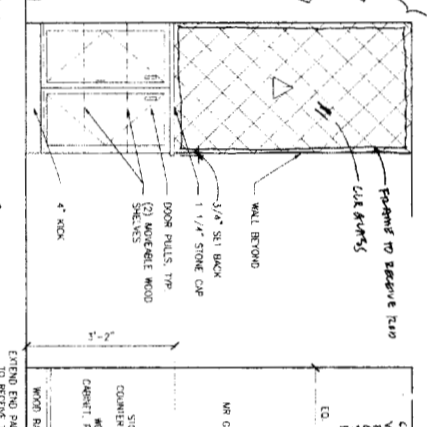
1 KIDS' BATHROOM ELEV.  
1/2"=1'-0"



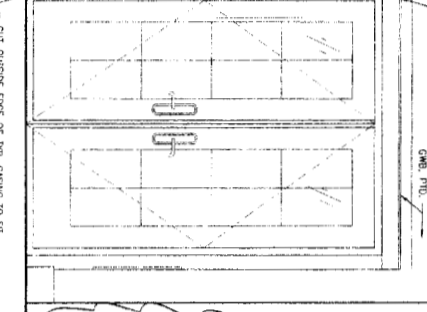
2 KIDS' BATHROOM ELEV.  
1/2"=1'-0"



3 KIDS' BATHROOM ELEV.  
1/2"=1'-0"



4 KIDS' BATHROOM ELEV.  
1/2"=1'-0"



5 KITCHEN ELEV.  
1/2"=1'-0"

NOTES:  
1. SEE PORTLAND SPECALTY TILE FOR MATERIALS AND PATTERNS



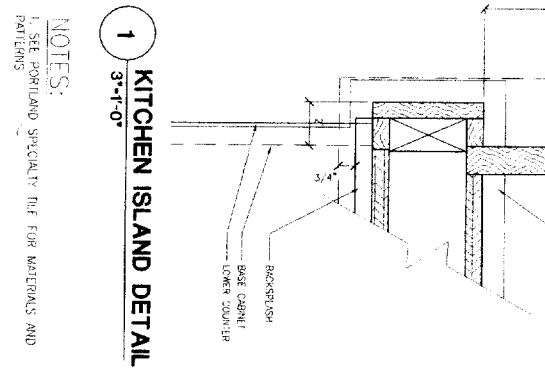
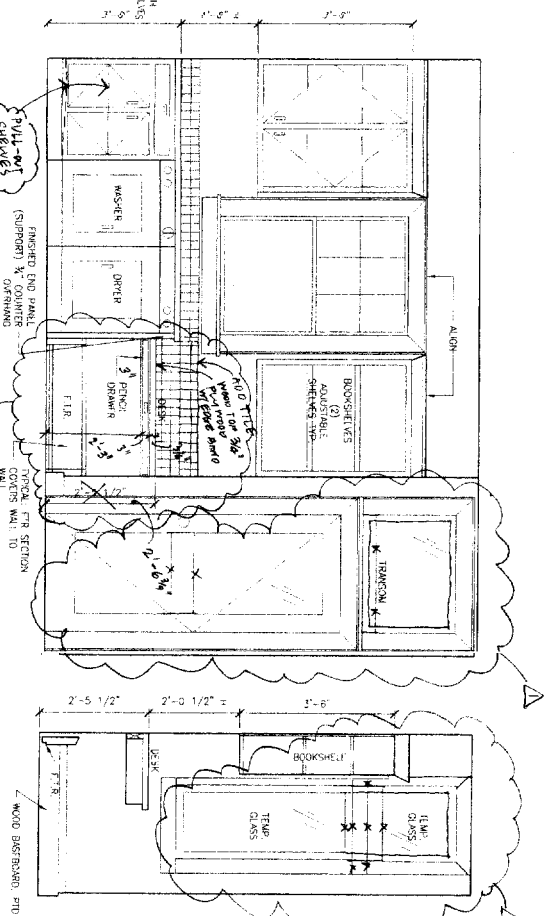
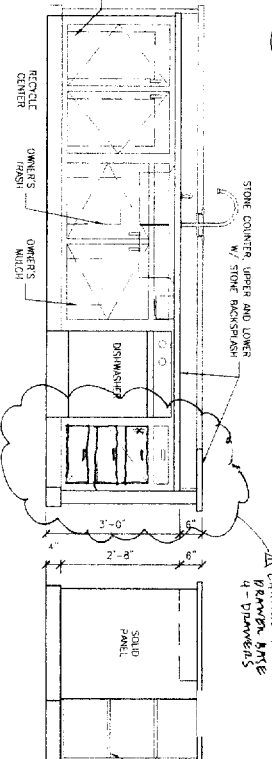
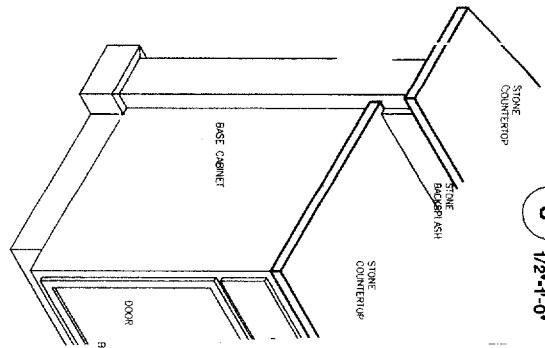
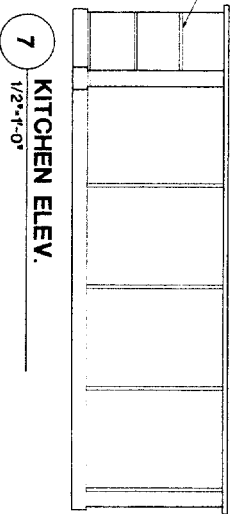
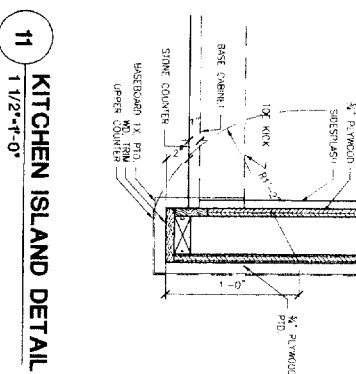
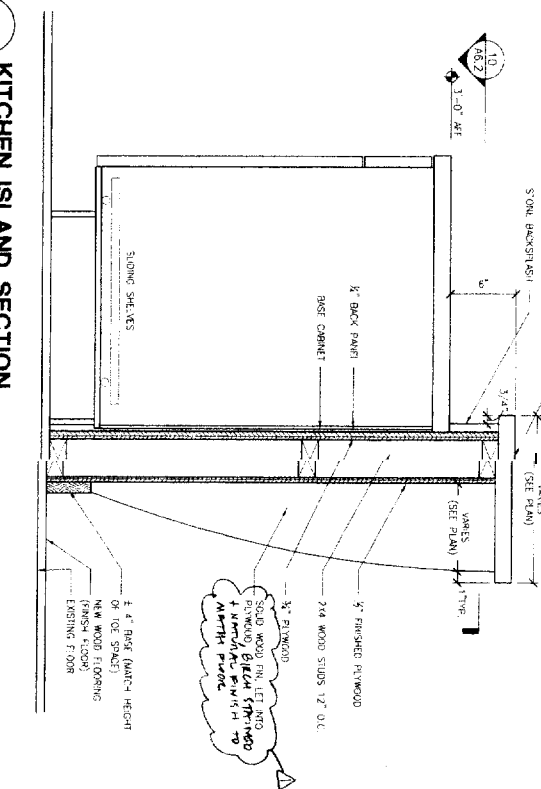
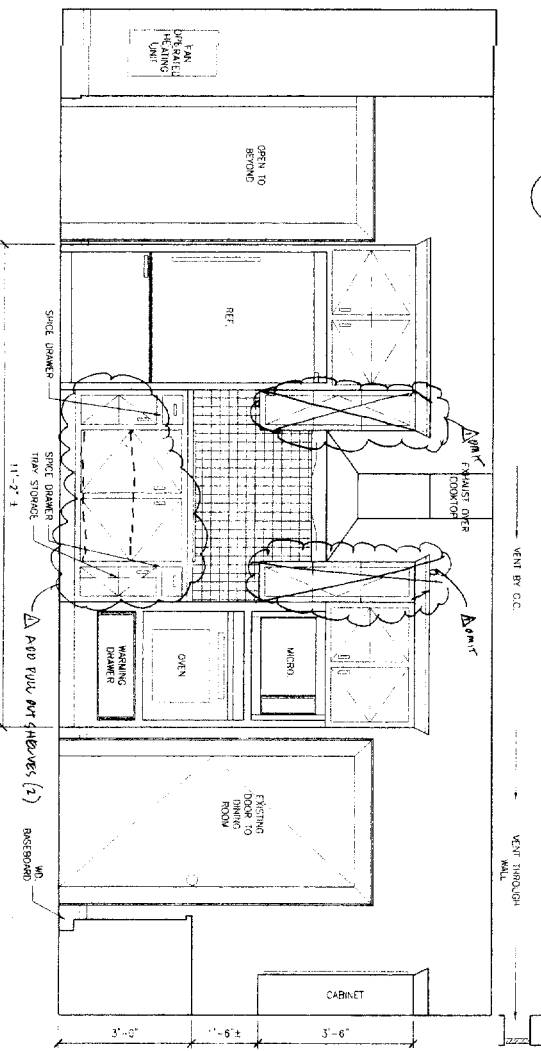
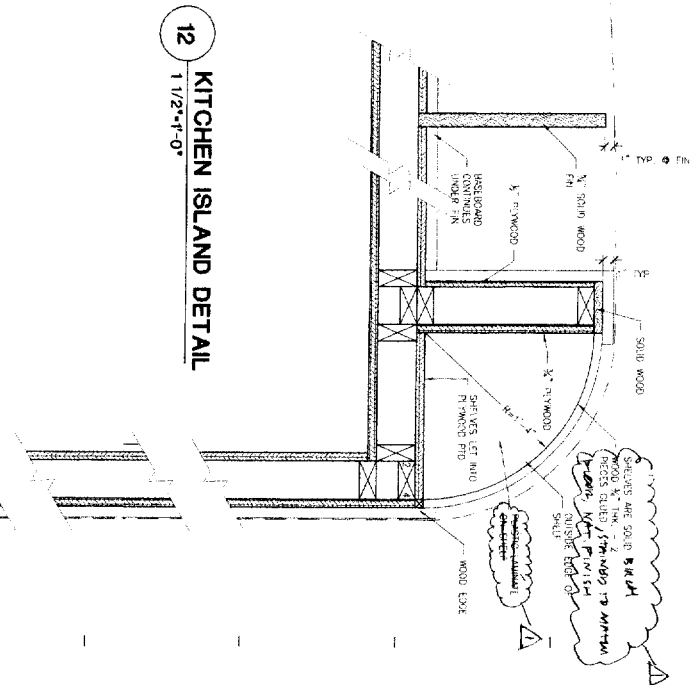
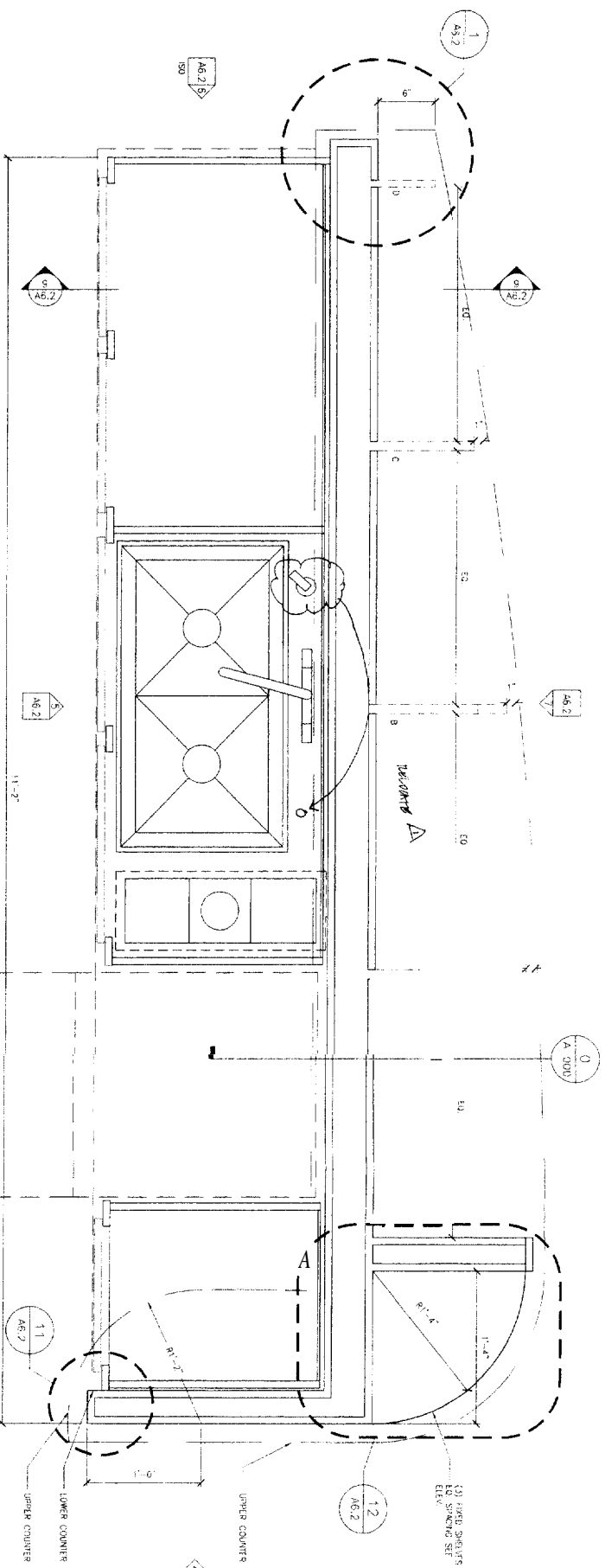
STEELE RESIDENCE  
22 CLIFFORD STREET  
PORTLAND, MAINE

INTERIOR  
ELEVATIONS  
AND DETAILS

TITLE:

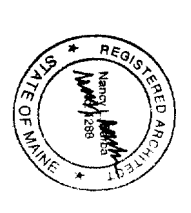
Project No : 00410  
Date : AU GUS 182004  
Revisions: RE VANDU/A  
AUGST 142004  
Issued For: CONSTRUCTION  
Drawing No:

A6.2



NOTES:  
1. SEE PORTLAND SPECIFICATIONS FOR MATERIALS AND FINISHES



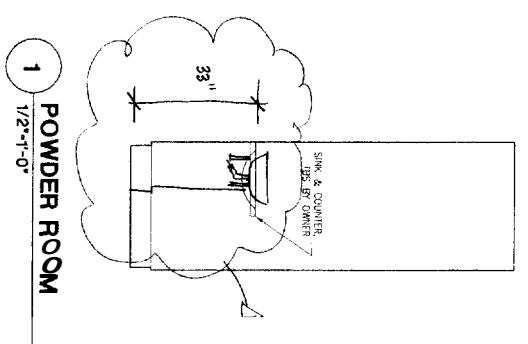


STEELE RESIDENCE  
22 CLIFFORD STREET  
PORTLAND, MAINE

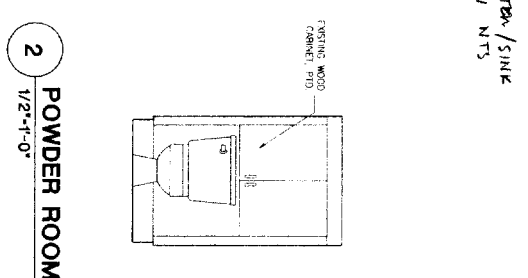
Title:  
**INTERIOR  
ELEVATIONS  
AND DETAILS**

Project No. 200410  
Date AUGUST 18, 2004  
Revisions: REVISION A  
AUGUST 18, 2004  
Issued For: CONSTRUCTION  
Drawing No.

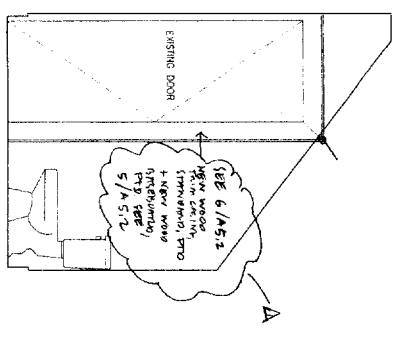
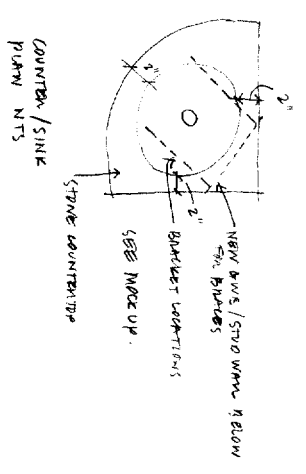
**A6.3**



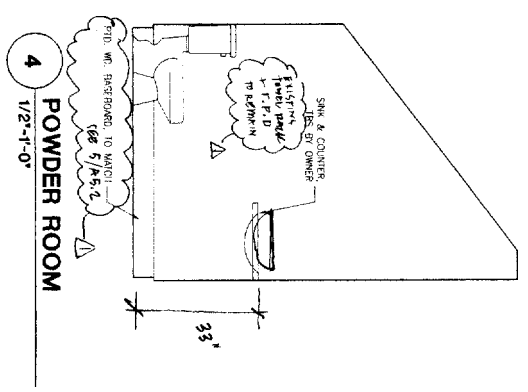
1  
1/2"-1'-0"  
POWDER ROOM



2  
1/2"-1'-0"  
POWDER ROOM

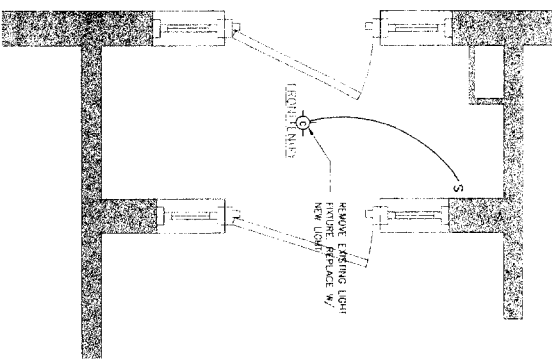


3  
1/2"-1'-0"  
POWDER ROOM

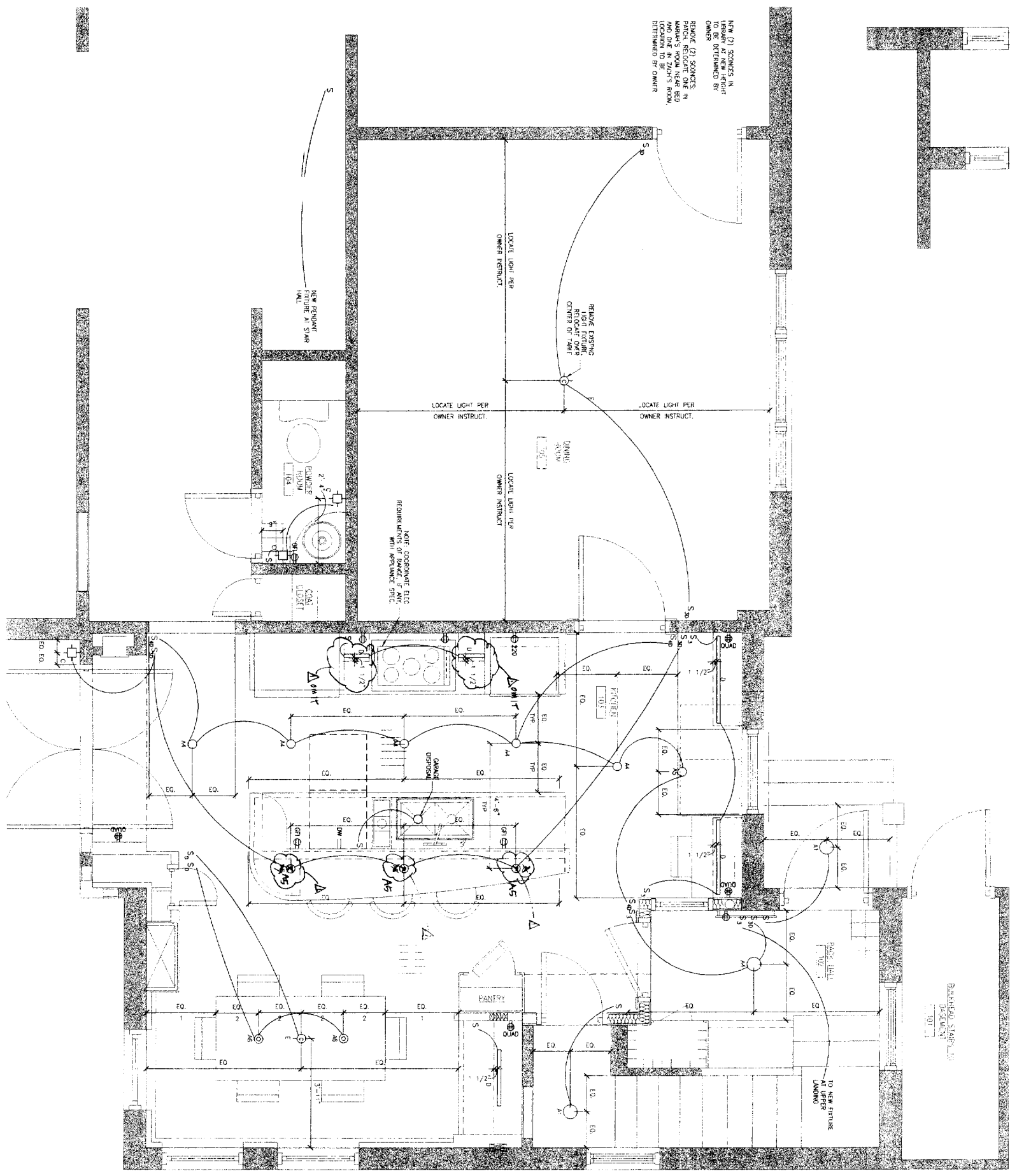


4  
1/2"-1'-0"  
POWDER ROOM

NOTES:  
1. SEE PORTLAND SPECIFIC TILE FOR MATERIALS AND PATTERNS



NEW (2) SQUARES IN LIBRARY AT NEW HEIGHT TO BE DETERMINED BY OWNER.  
 REMOVE (2) SQUARES. RELOCATE ONE IN REAR ROOM AND ONE IN ZOO'S ROOM. LOCATION TO BE DETERMINED BY OWNER.



ELECTRICAL FIXTURE LEGEND			
S	SWITCH	○	SURFACE MTD LIGHT FIXTURE
S <sub>1</sub>	3-WAY SWITCH	○WP	WATERPROOF LIGHT FIXTURE
S <sub>0</sub>	SWITCH W/ DIMMER	□	WALL SCONCE
S <sub>2</sub>	FAN SWITCH	□	UNDER COUNTER FIXTURE
Φ	DOOR JAM SWITCH	⊖	EXHAUST FAN
Φ	DUPLEX OUTLET	⊖	CHANDLER OWNER SUPPLIED
▲	TELEPHONE	⊖	GROUND FAULT INTERRUPTOR
☼	CEILING FAN	⊖	GROUND FAULT INTERRUPTOR
○	RECESSED LIGHT FIXTURE	⊖	220 GROUND FAULT INTERRUPTOR
⊖	PENDANT LIGHT FIXTURE	⊖	DISHWASHER CONNECTION
⊖	FLOURESCENT LIGHT	⊖	2'-0" FLOURESCENT LIGHT WALL MTD
⊖	REC PAPER LIGHT	⊖	PIN HOLE LOW VOLTAGE

NOTE: NOTIFY ARCHITECT FOR RESOLUTION IF THE LIGHT FIXTURE LOCATION SHOWN IS IN CONFLICT WITH STRUCTURE OR OTHER OBSTACLES.

**1** FIRST FLOOR PLAN (PARTIAL)  
 1/2" = 1'-0"

BARRA-WHELLOCK

ARCHITECTURE  
 PRESERVATION  
 DESIGN

500 CONGRESS STREET  
 PORTLAND, MAINE 04101  
 FAX 207 7223167  
 TEL 207 7222722



**STEELE RESIDENCE**  
**22 CLIFFORD STREET**  
 PORTLAND, MAINE

Title:  
**FIRST FLOOR LIGHTING and ELECTRICAL LAYOUT PLAN**

Project No: 200410  
 Date: AUGUST 18 2004  
 Revisions: REVISION/AUGUST 18 2004  
 Issued For: CONSTRUCTION  
 Drawing No:

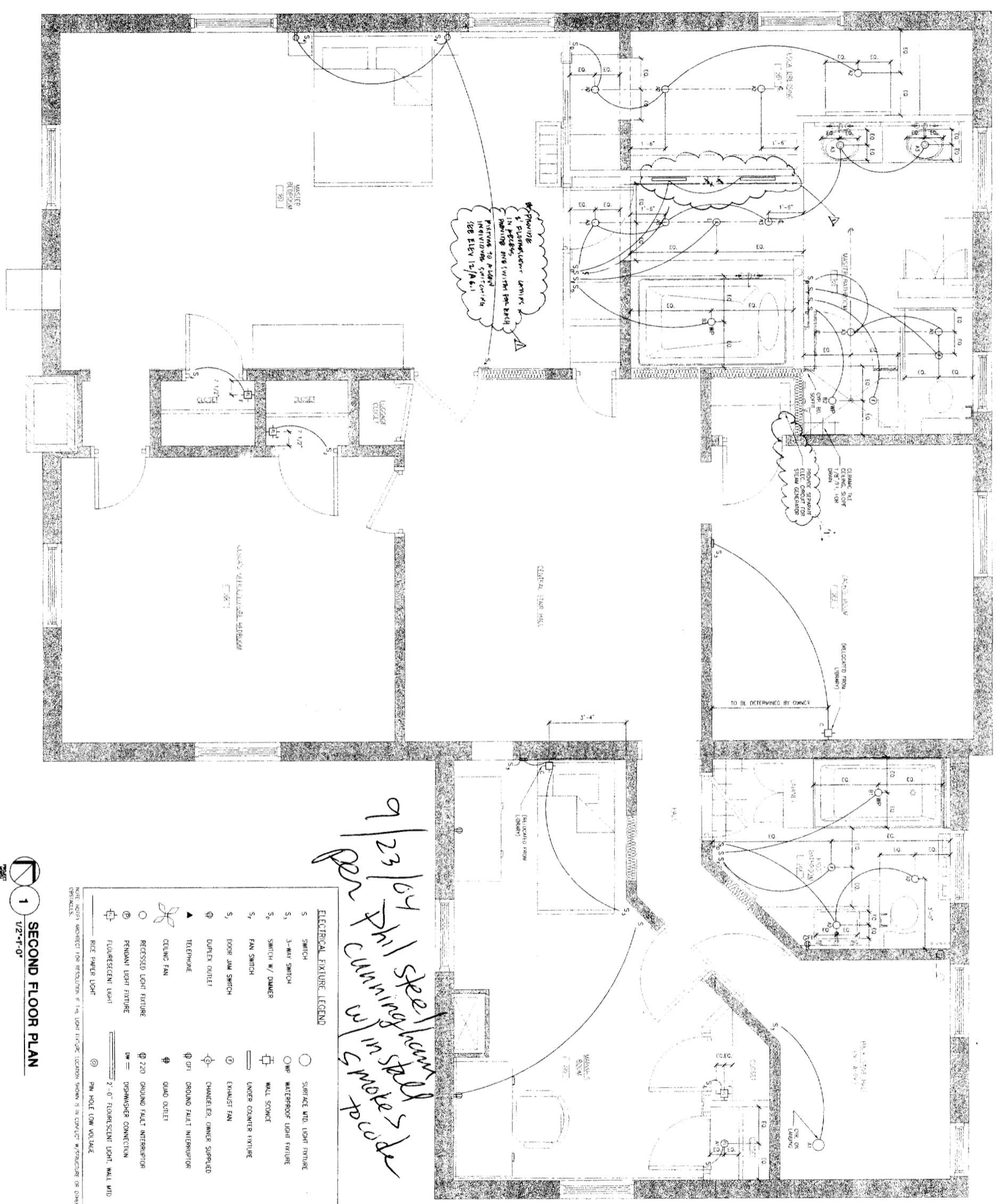
**A7.1**



**STEELE RESIDENCE**  
**22 CLIFFORD STREET**  
PORTLAND, MAINE

Project No. 200410  
Date: AUGUST 18, 2004  
Revisions: REVISION 1, AUGUST 18, 2004

Issued For: CONSTRUCTION  
Drawing No. A7.2



**ELECTRICAL FIXTURE LEGEND**

S	SWITCH	○	SURFACE W/O LIGHT FIXTURE
S <sub>1</sub>	3-WAY SWITCH	○ WP	WATERPROOF LIGHT FIXTURE
S <sub>0</sub>	SWITCH W/ DIMMER	□	WALL SPOCKE
S <sub>1</sub>	FAN SWITCH	□	UNDER COUNTER FIXTURE
S <sub>1</sub>	DOOR JAMB SWITCH	⊙	EXHAUST FAN
⊙	DUPLEX OUTLET	⊙	CHANGELER, OWNER SUPPLIED
⊙	TELEPHONE	⊙	GROUND FAULT INTERRUPTOR
⊙	CEILING FAN	⊙	QUAD OUTLET
⊙	RECESSED LIGHT FIXTURE	⊙	GROUND FAULT INTERRUPTOR
⊙	PRIMARY LIGHT FIXTURE	⊙	DISMOWSER CONNECTION
⊙	FLUORESCENT LIGHT	⊙	2'-0" FLUORESCENT LIGHT, WALL W/O
⊙	ROCK POWER LIGHT	⊙	PIN HOLE LOW VOLTAGE

NOTE: DIMENSIONS SHOWN FOR RESOLUTION. IF THE LIGHT FIXTURE LOCATION SHOWN IS IN CONFLICT WITH STRUCTURE OR OTHER CRITERIA.

*9/23/04 Phil Steel  
Cunningham w/ in Steel  
to make notes to code*

**1 SECOND FLOOR PLAN**  
1/2" = 0'

