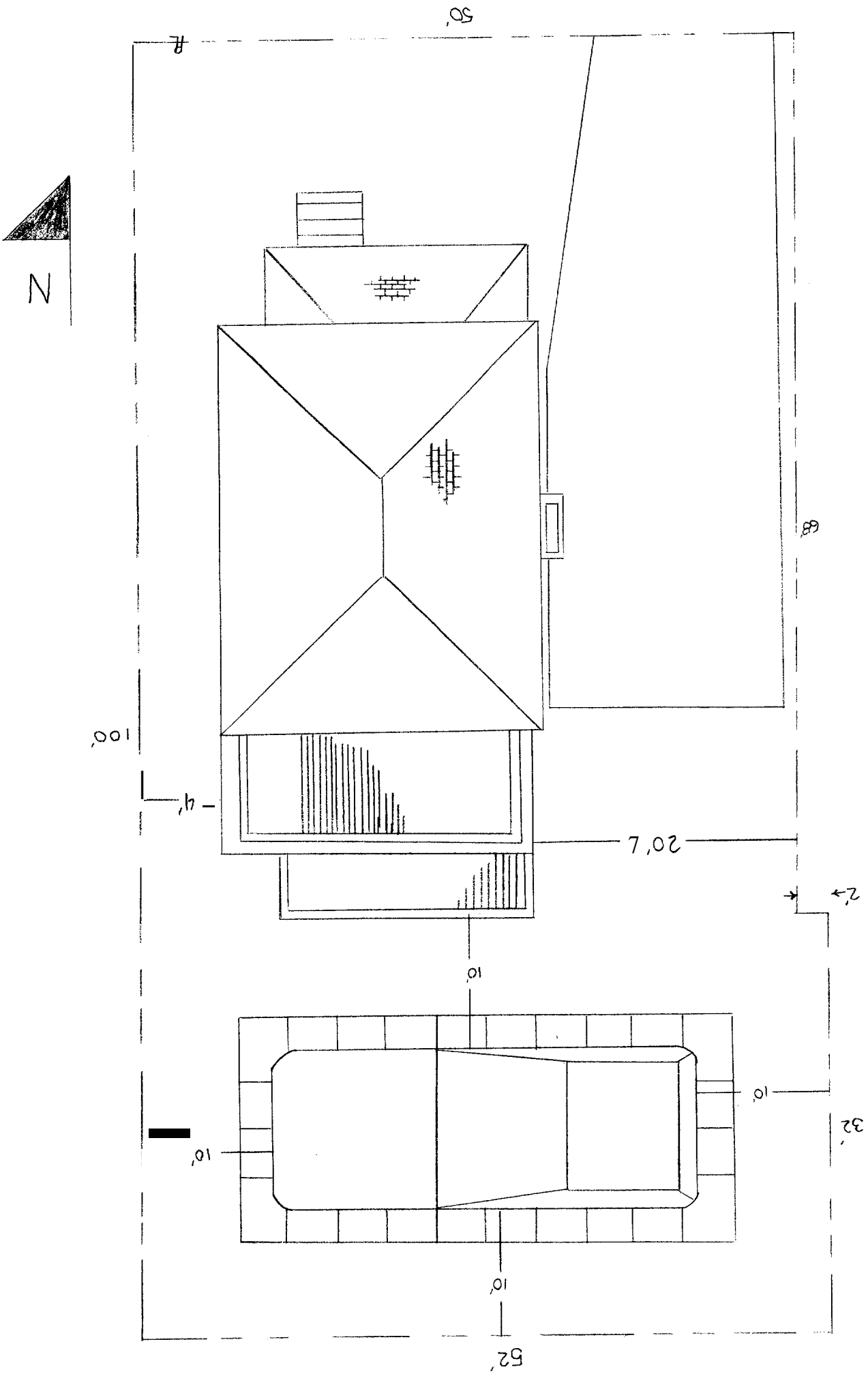


BY: J ANDREAS PORTLAND, ME		PLOT PLAN	THE BOXER HOME 64 BRENTWOOD ST PORTLAND, ME 0410
16 AUGUST 2004	SCALE: 1"=10'-0"		

133 D 90
AUG 17 2004

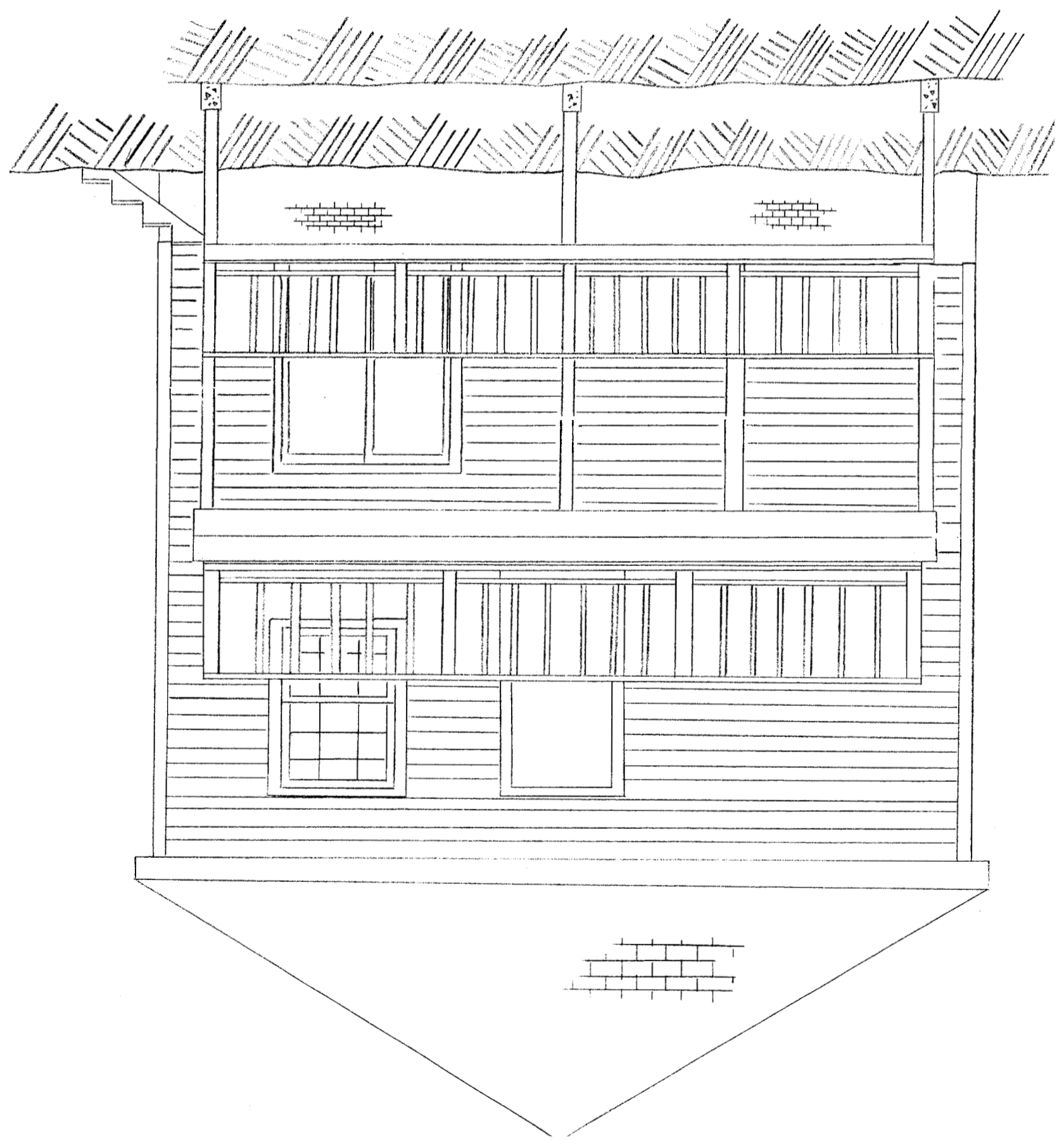


16 AUGUST 2004	SOUTH ELEVATION	THE BOXER HOME 64 BRENTWOOD ST PORTLAND ME 0410
SCALE 1/4" = 1'-0" 3/7		

BY J SANDREAN
PORTLAND ME

11-17

133 D 20

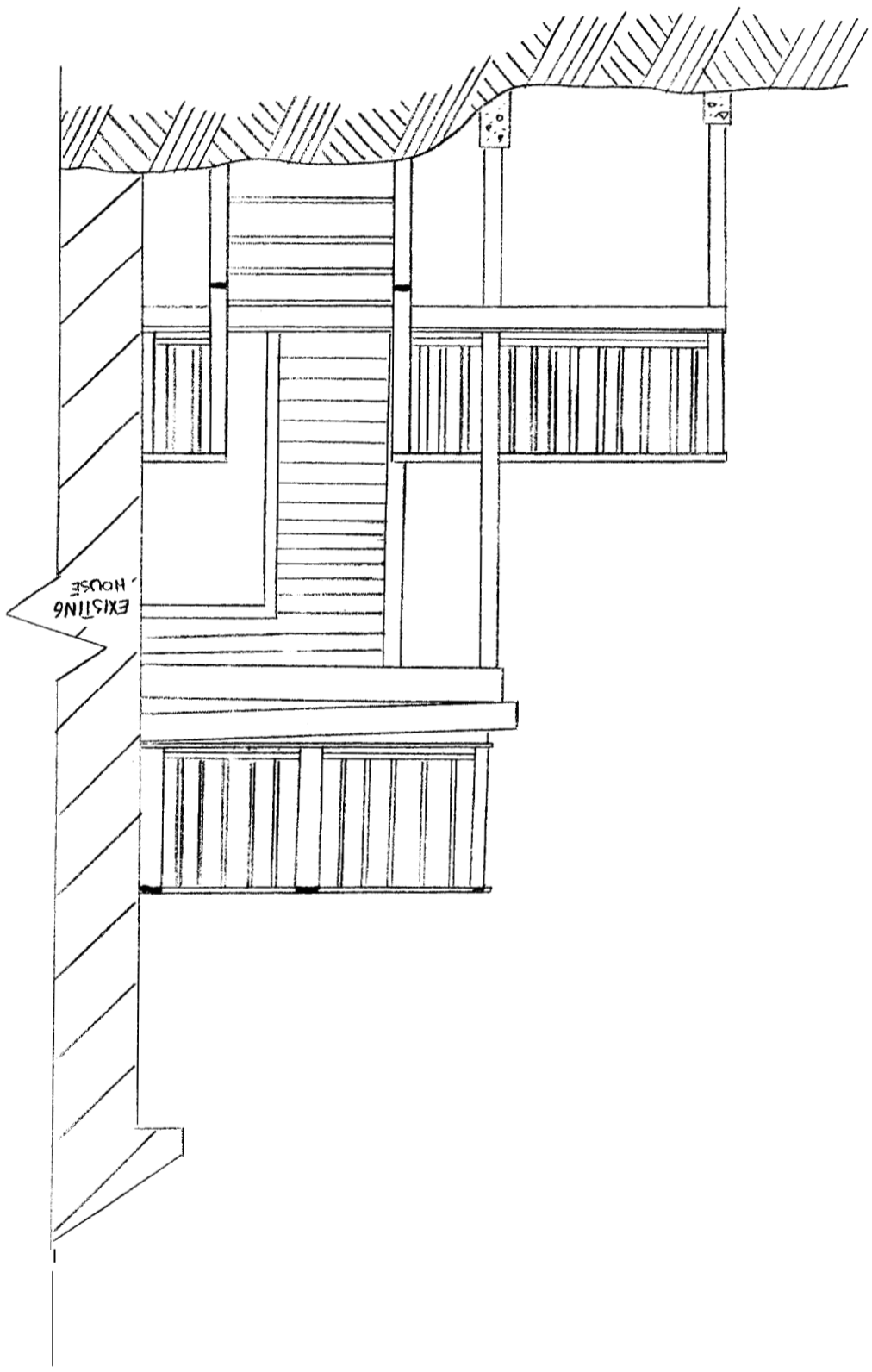


16 AUGUST 2004		EAST ELEVATION	THE BOXER HOME 64 BRENTWOOD ST PORTLAND, ME 0410
4/7	scale 1/4" = 1'-0"		

BY J SANDREAS
PORTLAND ME

11

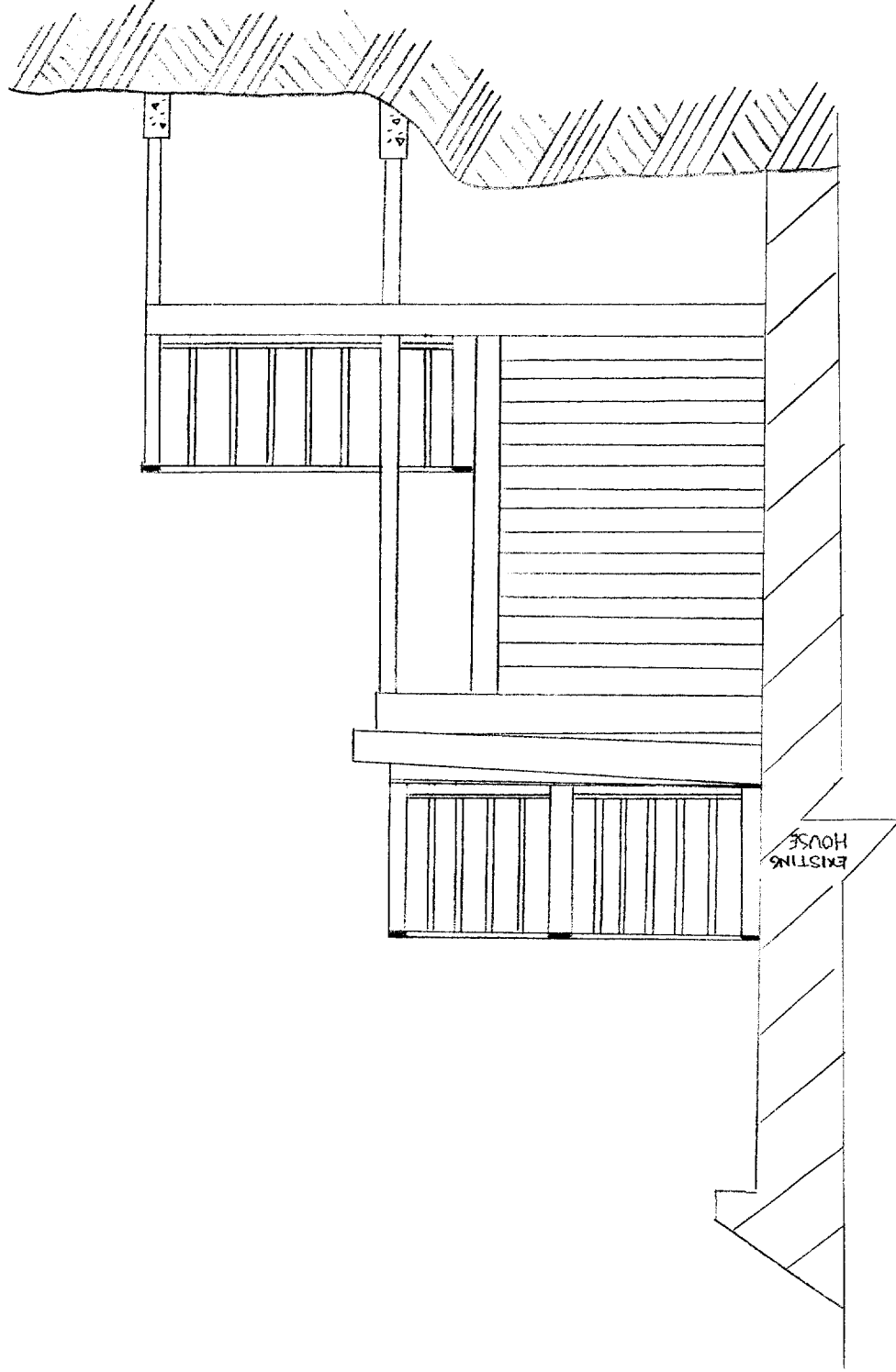
133 D 20



16 AUGUST 2004		WEST ELEVATION	THE BOXER HOME 64 BRENTWOOD ST PORTLAND, ME 0410
5/7	SCALE 1/4" = 1'-0"		

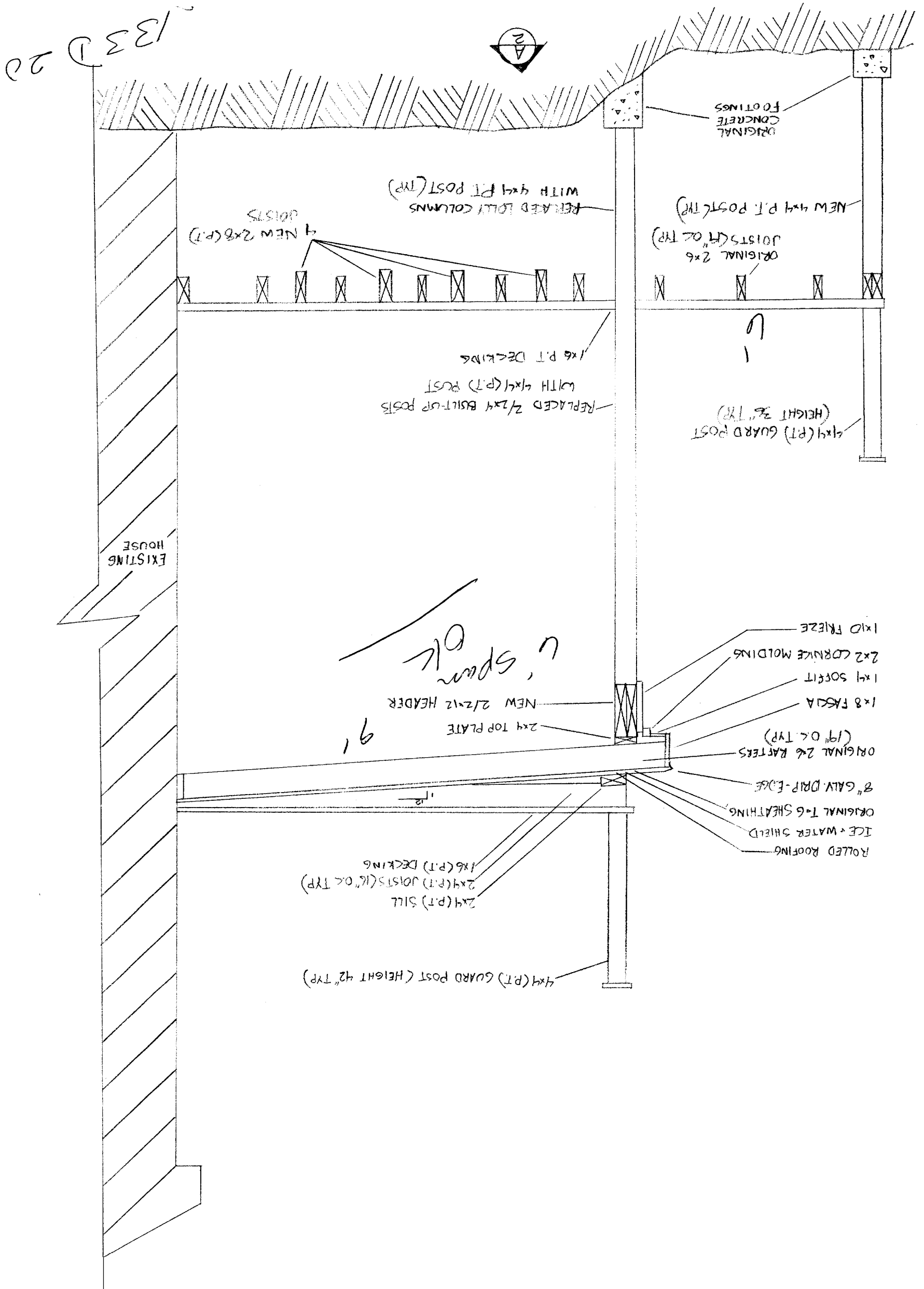
BY J SANDREAU
PORTLAND ME

133 D 20



16 AUGUST 2004		TYPICAL SECTION	THE BOXER HOME 64 BRENTWOOD ST PORTLAND ME 0410
6/7	Scale: 1/2" = 1'-0"		

BY J SANDREAU
PORTLAND ME



EXISTING HOUSE

9' span
OK

133 D 20



ORIGINAL CONCRETE FOOTINGS

NEW 4x4 P.T. POST (TYP)
ORIGINAL 2x6 JOISTS (16\"/>

REPLACED 2x4 BUILT-UP POST WITH 4x4 (P.T) POST
1x6 P.T. DECKING

4x4 (P.T) GUARD POST (HEIGHT 36\"/>

- 1x10 FRIEZE
- 2x2 CORNICE MOLDING
- 1x4 SOFFIT
- 1x8 FASCIA
- ORIGINAL 2x6 RAFTERS (19\"/>
- 8\"/>
- ORIGINAL T-6 SHEATHING
- ICE + WATER SHIELD
- ROLLED ROOFING

- 4x4 (P.T) GUARD POST (HEIGHT 42\"/>
- 2x4 (P.T) SILL
- 2x4 (P.T) JOISTS (16\"/>
- 1x6 (P.T) DECKING

NEW 2x12 HEADER

2x4 TOP PLATE

REPLACED 2x4 BUILT-UP POST WITH 4x4 (P.T) POST

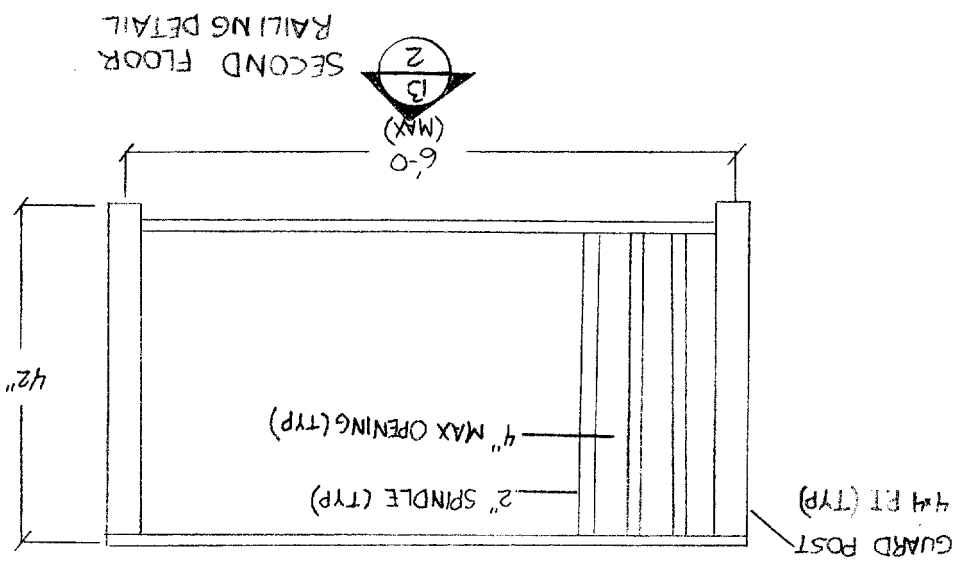
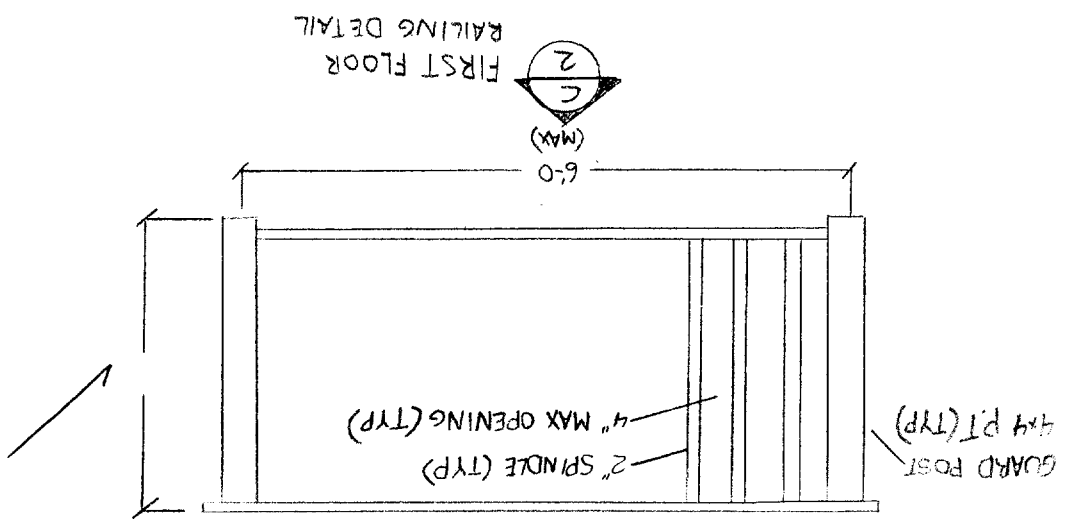
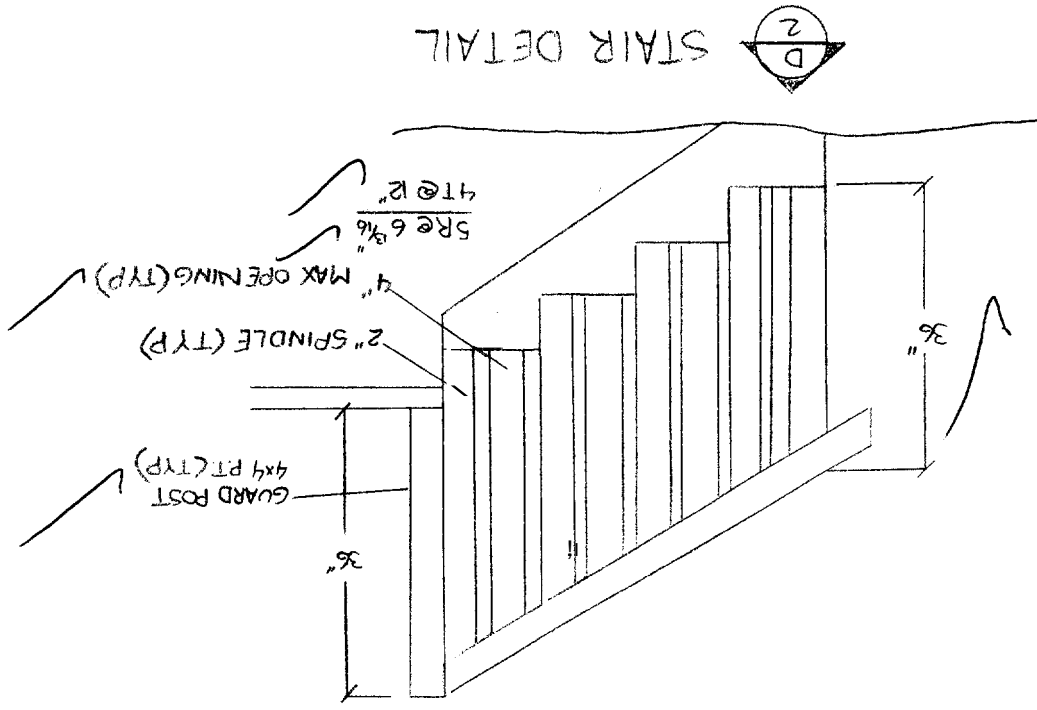
4 NEW 2x8 (P.T) JOISTS

REPLACED 2x4 BUILT-UP POST WITH 4x4 (P.T) POST (TYP)

16 AUGUST 2004		DETAILS	THE BOXER HOME 64 BRENTWOOD ST PORTLAND, ME 0710
7	SCALE 1/4" = 1'-0"		

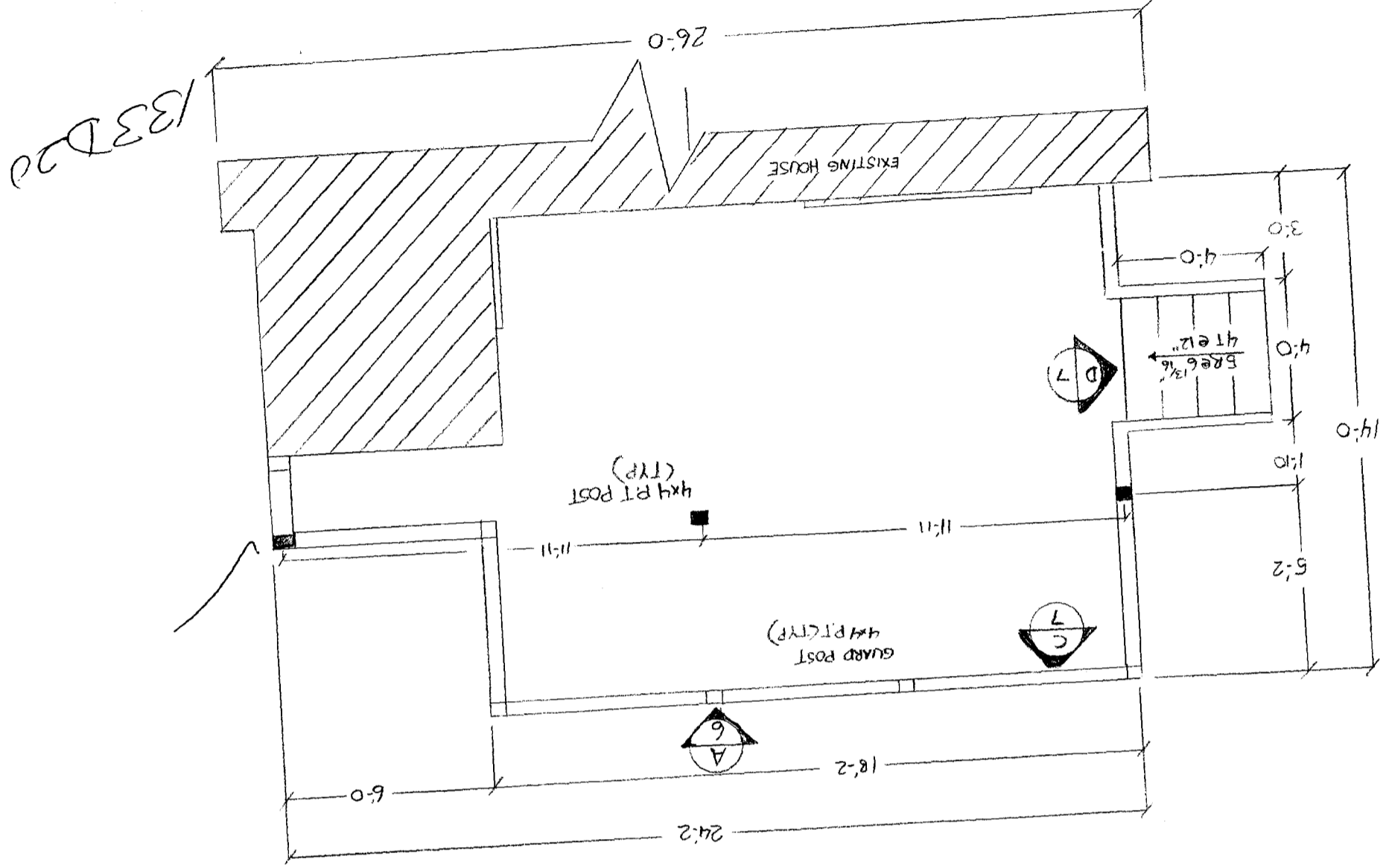
BY J SANDREAS
PORTLAND ME

133 D 20



THE BOXER HOME 64 BRENTWOOD ST PORTLAND ME 04110		FLOOR PLANS	16 AUGUST 2004	ST J ANDREAU PORTLAND ME
SCALE: 1/4" = 1'-0"	2/7			

FIRST FLOOR DECK PLAN



SECOND FLOOR DECK PLAN

