

HOOD INFORMATION - Job#3284507

HOOD NO.	TAG	MODEL	LENGTH	MAX. COOKING TEMP.	TOTAL EXH. CFM	EXHAUST PLENUM RISER(S)						TOTAL SUPPLY CFM	HOOD CONSTRUCTION	HOOD CONFIG.		
						WIDTH	LENG.	HEIGHT	DIA.	CFM	VEL.			S.P.	END TO END	ROW
1		5424 ND-2-PSP-F	12' 3'	600 Deg.	2879			4'	12'	1439	1832	-0.725'	2591	430 SS Where Exposed	ALONE	ALONE
								4'	12'	1439	1832	-0.725'				

HOOD INFORMATION

HOOD NO.	TAG	FILTER(S)					LIGHT(S)			UTILITY CABINET(S)				FIRE SYSTEM PIPING	HOOD HANGING WGT			
		TYPE	QTY.	HEIGHT	LENGTH	EFFICIENCY @ 7 MICRONS	QTY.	TYPE	WIRE GUARD	LOCATION	SIZE	FIRE SYSTEM				ELECTRICAL	SWITCHES	
1		Captrate Solo Filter	9	20"	16'	85% See Filter Spec.	4	Screw In Compact	NO								NO	683 LBS

HOOD OPTIONS

HOOD NO.	TAG	OPTION
1		RIGHT END STANDOFF (FINISHED) 1' Wide 54" Long Insulated LEFT QUARTER END PANEL 23' Top Width, 0' Bottom Width, 23' High 430 SS RIGHT WALL AS END PANEL

PERFORATED SUPPLY PLENUM(S)

HOOD NO.	TAG	POS.	LENGTH	WIDTH	HEIGHT	TYPE	RISER(S)				
							WIDTH	LENG.	DIA.	CFM	S.P.
1		Front	148'	20'	6'	MUA	12"	28"		647	0.160'
						MUA	12"	28"		647	0.160'
						MUA	12"	28"		647	0.160'
						MUA	12"	28"		647	0.160'

SPECIFICATION: CAPTRATE® GREASE-STOP® SOLO FILTER

THE CAPTRATE GREASE-STOP SOLO FILTER IS A SINGLE-STAGE FILTER FEATURING A UNIQUE S-BAFFLE DESIGN IN CONJUNCTION WITH A SLOTTED REAR BAFFLE DESIGN, TO DELIVER EXCEPTIONAL FILTRATION EFFICIENCY.

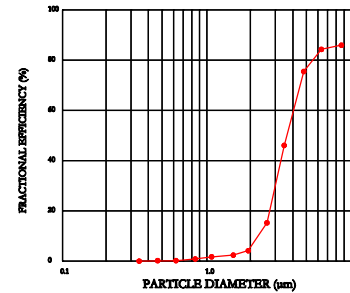
FILTER IS STAINLESS STEEL CONSTRUCTION, AND SIZED TO FIT INTO STANDARD 2-INCH DEEP HOOD CHANNEL(S).

UNITS SHALL INCLUDE STAINLESS STEEL HANDLES AND A FASTENING DEVICE TO SECURE THE TWO COMPONENTS WHEN ASSEMBLED.

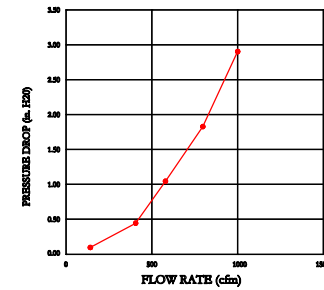
GREASE EXTRACTION EFFICIENCY PERFORMANCE SHALL REMOVE AT LEAST 75% OF GREASE PARTICLES FIVE MICRONS IN SIZE, AND 85% GREASE PARTICLES SEVEN MICRONS IN SIZE AND LARGER, WITH A CORRESPONDING PRESSURE DROP NOT TO EXCEED 1.0 INCHES OF WATER GAUGE.

THE CAPTRATE GREASE-STOP SOLO WAS TESTED TO ASTM STANDARD ASTM F2519-05.

EFFICIENCY VS. PARTICLE DIAMETER



PRESSURE DROP VS. FLOW RATE



CAPTRATE FILTERS ARE BUILT IN COMPLIANCE WITH:
 NFPA #96
 NSF STANDARD #2
 UL STANDARD #1046
 INT. MECH. CODE (IMC)
 ULC-S649



CUSTOMER APPROVAL TO MANUFACTURE:

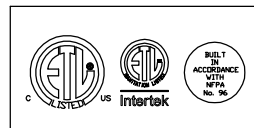
Approved as Noted

Approved with NO Exception Taken

Revise and Resubmit

SIGNATURE _____

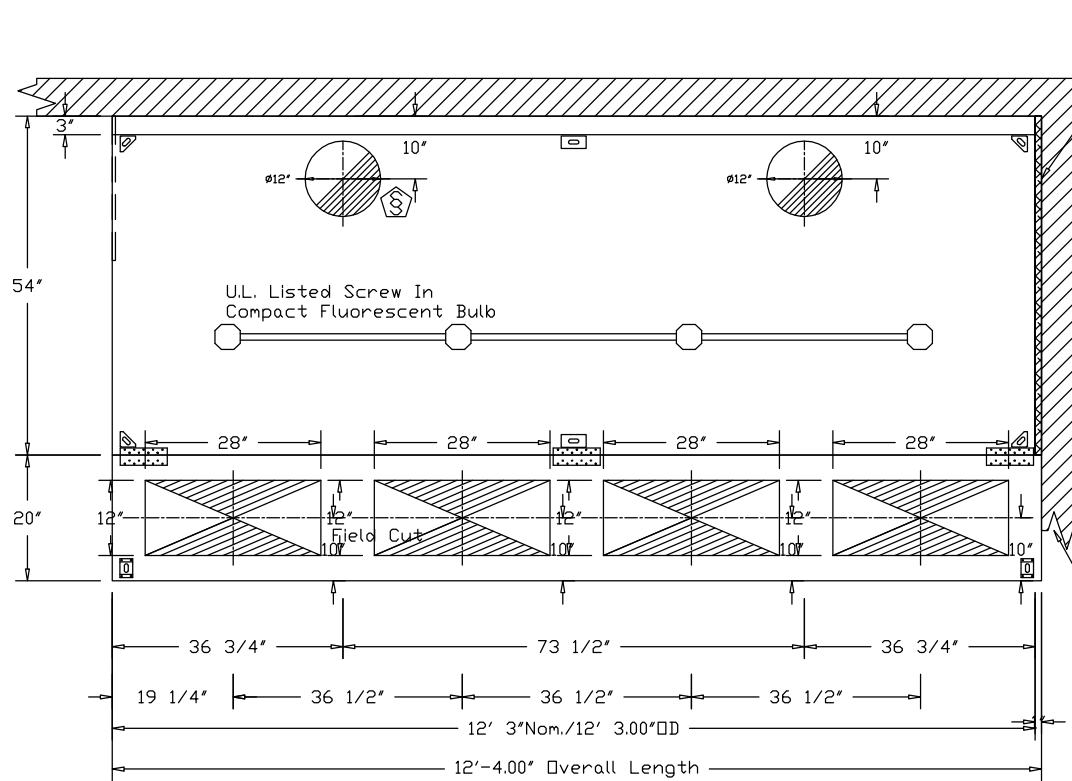
Your Title _____ Date _____



JOB Bob's Clam Hut - Portland r3	
LOCATION PORTLAND, ME, 04101	
DATE 1/26/2018	JOB # 3284507
DWG # 1	DRAWN BY BFC-21
REV.	SCALE 3/8" = 1'-0"

PATENT NUMBERS

AC-PSP (United States) - US Patent 7963830 B2
 AC-PSP Wall (Canada) - CA Patent 2820509
 AC-PSP Island (Canada) - CA Patent 2520330



1" LAYER OF INSULATION
 FACTORY INSTALLED IN
 100" END STANDOFF MEETS
 0" REQUIREMENTS CLEARANCE
 TO COMBUSTIBLE SURFACES.

INSTALLER MUST CONFIRM HOOD IS INSTALLED SUCH THAT THE SPECIFIED WALL, ACTING AS AN END PANEL, IS MATED TIGHT TO THE CORRECT END OF HOOD TO ACHIEVE A REDUCED MINIMUM EXHAUST CFM LISTING. NON-COMPLIANCE WILL NULLIFY THE ETL LISTING, VOID THE MANUFACTURER'S WARRANTY, AND HOLD THE CONTRACTOR LIABLE FOR ANY AND ALL LOSSES, COSTS, AND EXPENSES RELATED TO THE NON-CONFORMANCE OF THE MANUFACTURER'S SPECIFIED INSTRUCTION. THE WALL ACTING AS AN END PANEL MUST EXTEND NO LESS THAN 20" FROM THE INTERSECTING WALL ON WHICH HOOD IS MOUNTED AND MUST EXTEND NO LESS THAN 20" UNDER BOTTOM OF HOOD TO BE ELIGIBLE FOR REDUCED MINIMUM EXHAUST CFM LISTING.

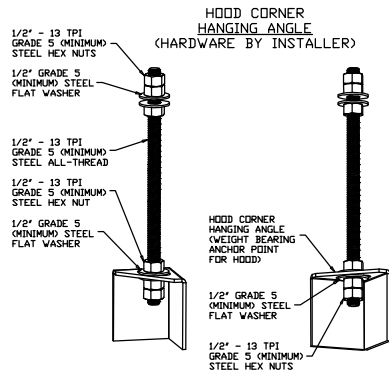
PLAN VIEW - Hood #1
12' 3.00" LONG 5424ND-2-PSP-F
 NOTE: Additional hanging angles provided for hoods 12' and longer.

CUSTOMER APPROVAL TO MANUFACTURE:

Approved as Noted	<input type="checkbox"/>
Approved with NO Exception Taken	<input type="checkbox"/>
Revise and Resubmit	<input type="checkbox"/>
SIGNATURE _____	
Your Title _____	Date _____

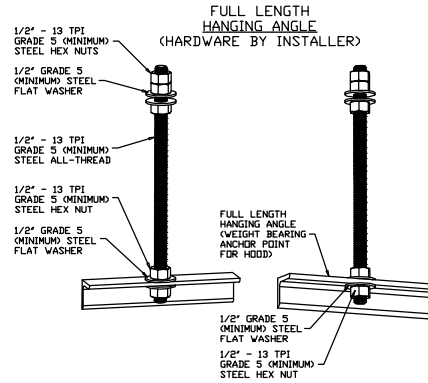


JOB Bob's Clam Hut - Portland r3	
LOCATION PORTLAND, ME, 04101	
DATE 1/26/2018	JOB # 3284507
DWG # 2	DRAWN BY BFC-21
REV.	SCALE 3/8" = 1'-0"



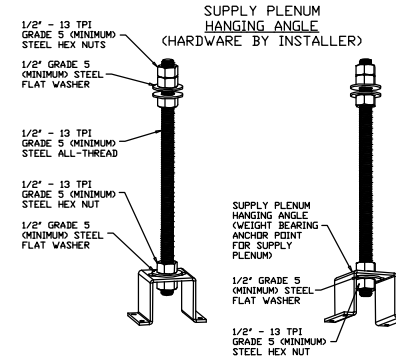
ASSEMBLY INSTRUCTIONS

HANGING ANGLE MUST BE SUPPORTED WITH 1/2" - 13 TPI GRADE 5 (MINIMUM) ALL-THREAD. SANDWICH HANGING ANGLES AND CEILING ANCHOR POINTS WITH 1/2" GRADE 5 (MINIMUM) STEEL FLAT WASHERS AND 1/2" - 13 TPI GRADE 5 (MINIMUM) HEX NUTS AS SHOWN. MUST USE DOUBLED HEX NUT CONFIGURATION BENEATH HOOD HANGING ANGLES AND ABOVE CEILING ANCHORS. MAINTAIN 1/4" OF EXPOSED THREADS BENEATH BOTTOM HEX NUT. TORQUE ALL HEX NUTS TO 57 FT-LBS.



ASSEMBLY INSTRUCTIONS

HANGING ANGLE MUST BE SUPPORTED WITH 1/2" - 13 TPI GRADE 5 (MINIMUM) ALL-THREAD. SANDWICH HANGING ANGLES AND CEILING ANCHOR POINTS WITH 1/2" GRADE 5 (MINIMUM) STEEL FLAT WASHERS AND 1/2" - 13 TPI GRADE 5 (MINIMUM) HEX NUTS AS SHOWN. MUST USE DOUBLED HEX NUT CONFIGURATION ABOVE CEILING ANCHORS. SINGLE HEX NUT BENEATH HANGING ANGLE IS ACCEPTABLE FOR FULL LENGTH HANGING ANGLES. MAINTAIN 1/4" OF EXPOSED THREADS BENEATH BOTTOM HEX NUT. TORQUE ALL HEX NUTS TO 57 FT-LBS.



ASSEMBLY INSTRUCTIONS

HANGING ANGLE MUST BE SUPPORTED WITH 1/2" - 13 TPI GRADE 5 (MINIMUM) ALL-THREAD. SANDWICH HANGING ANGLES AND CEILING ANCHOR POINTS WITH 1/2" GRADE 5 (MINIMUM) STEEL FLAT WASHERS AND 1/2" - 13 TPI GRADE 5 (MINIMUM) HEX NUTS AS SHOWN. MUST USE DOUBLED HEX NUT CONFIGURATION ABOVE CEILING ANCHORS. SINGLE HEX NUT BENEATH HANGING ANGLE IS ACCEPTABLE FOR PSP HANGING ANGLES. MAINTAIN 1/4" OF EXPOSED THREADS BENEATH BOTTOM HEX NUT. TORQUE ALL HEX NUTS TO 57 FT-LBS.

CUSTOMER APPROVAL TO MANUFACTURE:

Approved as Noted

Approved with NO Exception Taken

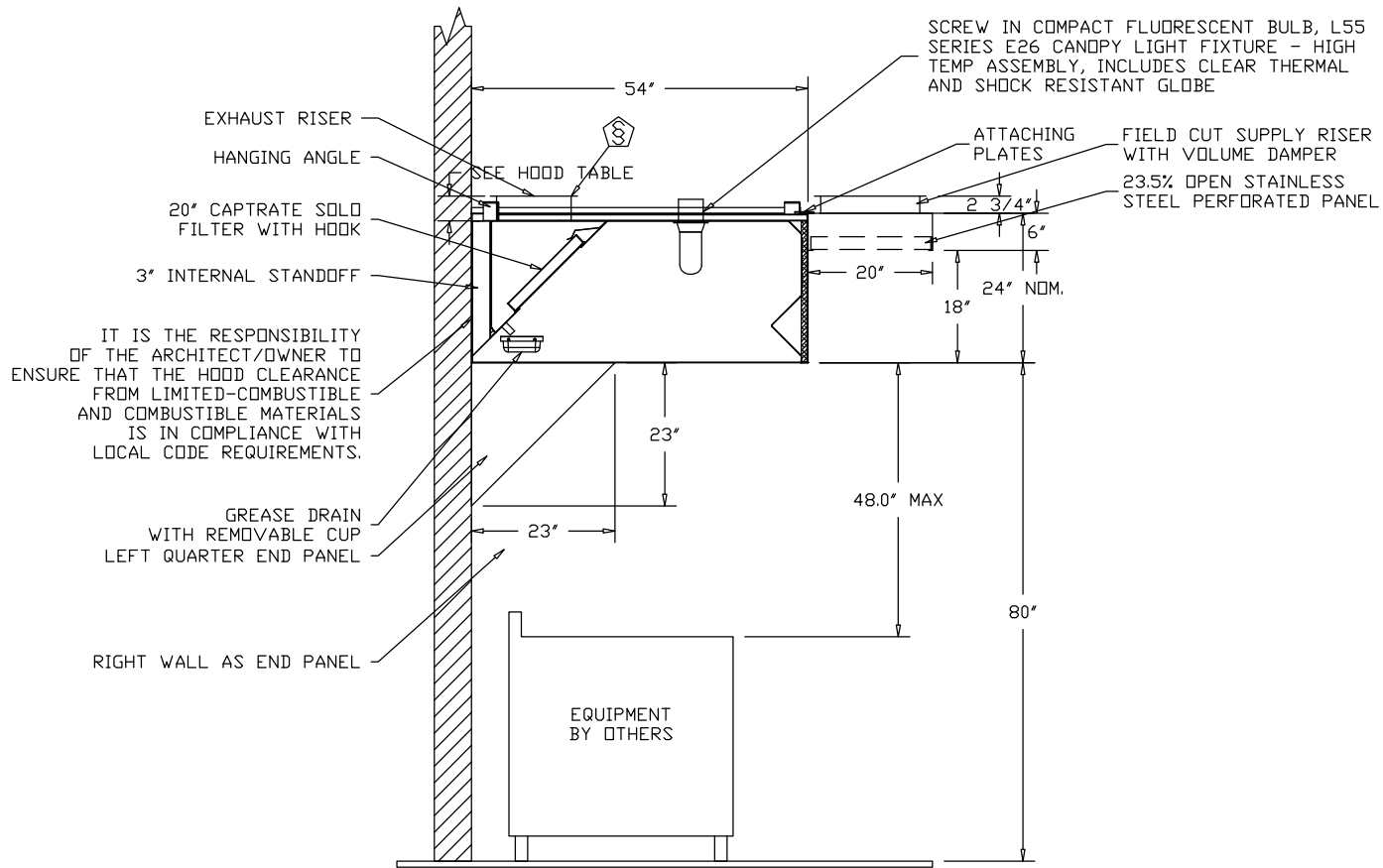
Revise and Resubmit

SIGNATURE _____

Your Title _____ Date _____



JOB Bob's Clam Hut - Portland r3	
LOCATION PORTLAND, ME, 04101	
DATE 1/26/2018	JOB # 3284507
DWG # 3	DRAWN BY BFC-21
REV.	SCALE 3/8" = 1'-0"



SECTION VIEW - MODEL 5424ND-2-PSP-F
HOOD - #1

CUSTOMER APPROVAL TO MANUFACTURE:

Approved as Noted	<input type="checkbox"/>
Approved with NO Exception Taken	<input type="checkbox"/>
Revise and Resubmit	<input type="checkbox"/>
SIGNATURE _____	
Your Title _____	Date _____



CAPTIVEAIR

JOB Bob's Clam Hut - Portland r3	
LOCATION PORTLAND, ME, 04101	
DATE 1/26/2018	JOB # 3284507
DWG # 4	DRAWN BY BFC-21
REV.	SCALE 3/8" = 1'-0"

EXHAUST FAN INFORMATION - Job#3284507

FAN UNIT NO.	TAG	FAN UNIT MODEL #	CFM	ESP.	RPM	H.P.	B.H.P.	Ø	VOLT	FLA	DISCHARGE VELOCITY	WEIGHT (LBS.)	SDNES
1		DUI180HFA	2879	1.500	1289	3.000	1.1450	3	208	9.5	665 FPM	222	18.4

MUA FAN INFORMATION - Job#3284507

FAN UNIT NO.	TAG	FAN UNIT MODEL #	BLOWER	HOUSING	DESIGN CFM		ESP.	RPM	H.P.	B.H.P.	Ø	VOLT	FLA	WEIGHT (LBS.)	SDNES	BURNER EFFICIENCY(%)
					MIN	MAX										
2		A1-D250-G10	G10	A1-D250	-	2591	0.400	1215	2.000	1.4100	1	230	9.3	710	23	92

GAS FIRED MAKE-UP AIR UNIT(S)

FAN UNIT NO.	TAG	INPUT BTUs	OUTPUT BTUs	TEMP. RISE	REQUIRED INPUT GAS PRESSURE	GAS TYPE
2		258537	237854	85 deg F	7 in. w.c. - 14 in. w.c.	Natural

FAN OPTIONS

FAN UNIT NO.	TAG	OPTION (Qty. - Descr.)
1		1 - Grease Box
		1 - Full Crating For Exhaust Fans
		1 - Fan Base Ceramic Seal - Ship Loose - For Grease Ducts
		1 - Exhaust Fan Heat Baffle
2		1 - Motorized Backdraft Damper for A1-D Housing
		1 - Full Crating For Commercial Heater
		1 - Low Fire Start
		1 - Inlet Pressure Gauge, 0-35"
		1 - Manifold Pressure Gauge, -5 to 15' wc

FAN ACCESSORIES

FAN UNIT NO.	TAG	EXHAUST			SUPPLY			
		GREASE CUP	GRAVITY DAMPER	WALL MOUNT	SIDE DISCHARGE	GRAVITY DAMPER	MOTORIZED DAMPER	WALL MOUNT
1		YES						
2						YES		

CURB ASSEMBLIES

NO.	ON FAN	WEIGHT	ITEM	SIZE
1	# 1	34 LBS	Curb	26.500"W x 26.500"L x 24.000"H Vented Hinged
2	# 2	74 LBS	Curb	21.000"W x 71.000"L x 24.000"H Insulated

FAN SOUND INFORMATION

FAN UNIT NO.	MOTDR	RPM	LWA	SDNES	DBA	DISTANCE FT	OCTAVE 1	OCTAVE 2	OCTAVE 3	OCTAVE 4	OCTAVE 5	OCTAVE 6	OCTAVE 7	OCTAVE 8
1	Exhaust	1289	82.3	18.4	70.8	5	76.5	81.2	88.1	78.6	71.4	69.1	63	57.1
2	Supply	1215	84.6	23	73.1	5	85.9	86.1	84.4	81.1	77.3	77.6	73.5	70

CUSTOMER APPROVAL TO MANUFACTURE:

Approved as Noted

Approved with NO Exception Taken

Revise and Resubmit

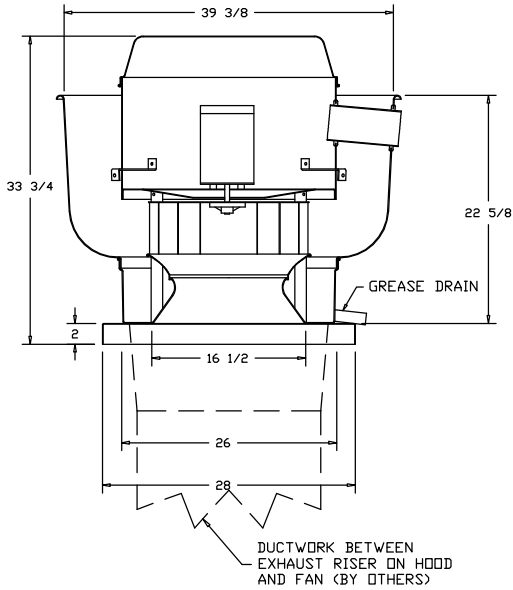
SIGNATURE _____

Your Title _____ Date _____



JOB Bob's Clam Hut - Portland r3	
LOCATION PORTLAND, ME, 04101	
DATE 1/26/2018	JOB # 3284507
DWG # 5	DRAWN BY BFC-21
REV.	SCALE 3/8" = 1'-0"

FAN #1 DU180HFA - EXHAUST FAN



FEATURES:

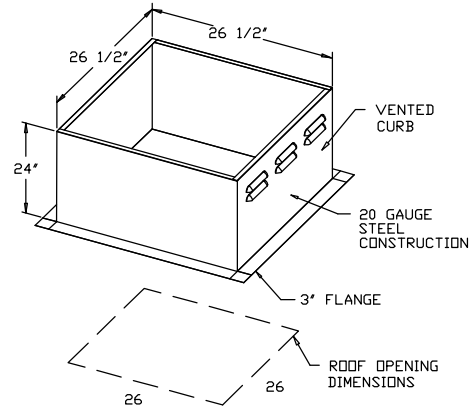
- DIRECT DRIVE CONSTRUCTION (NO BELTS/PULLEYS)
- ROOF MOUNTED FANS
- RESTAURANT MODEL
- UL705 AND UL762
- VARIABLE SPEED CONTROL
- INTERNAL WIRING
- WEATHERPROOF DISCONNECT
- THERMAL OVERLOAD PROTECTION (SINGLE PHASE)
- HIGH HEAT OPERATION 300°F (149°C)
- GREASE CLASSIFICATION TESTING

NORMAL TEMPERATURE TEST
 EXHAUST FAN MUST OPERATE CONTINUOUSLY WHILE EXHAUSTING AIR AT 300°F (149°C) UNTIL ALL FAN PARTS HAVE REACHED THERMAL EQUILIBRIUM, AND WITHOUT ANY DETERIORATING EFFECTS TO THE FAN WHICH WOULD CAUSE UNSAFE OPERATION.

ABNORMAL FLARE-UP TEST
 EXHAUST FAN MUST OPERATE CONTINUOUSLY WHILE EXHAUSTING BURNING GREASE VAPORS AT 600°F (316°C) FOR A PERIOD OF 15 MINUTES WITHOUT THE FAN BECOMING DAMAGED TO ANY EXTENT THAT COULD CAUSE AN UNSAFE CONDITION.

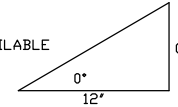
OPTIONS

- GREASE BOX
- FULL CRATING FOR EXHAUST FANS
- FAN BASE CERAMIC SEAL - SHIP LOOSE - FOR GREASE DUCTS
- EXHAUST FAN HEAT BAFFLE



PITCHED CURBS ARE AVAILABLE FOR PITCHED ROOFS.

SPECIFY PITCH:
 EXAMPLE: 7/12 PITCH = 30° SLOPE



CUSTOMER APPROVAL TO MANUFACTURE:

Approved as Noted

Approved with NO Exception Taken

Revise and Resubmit

SIGNATURE _____

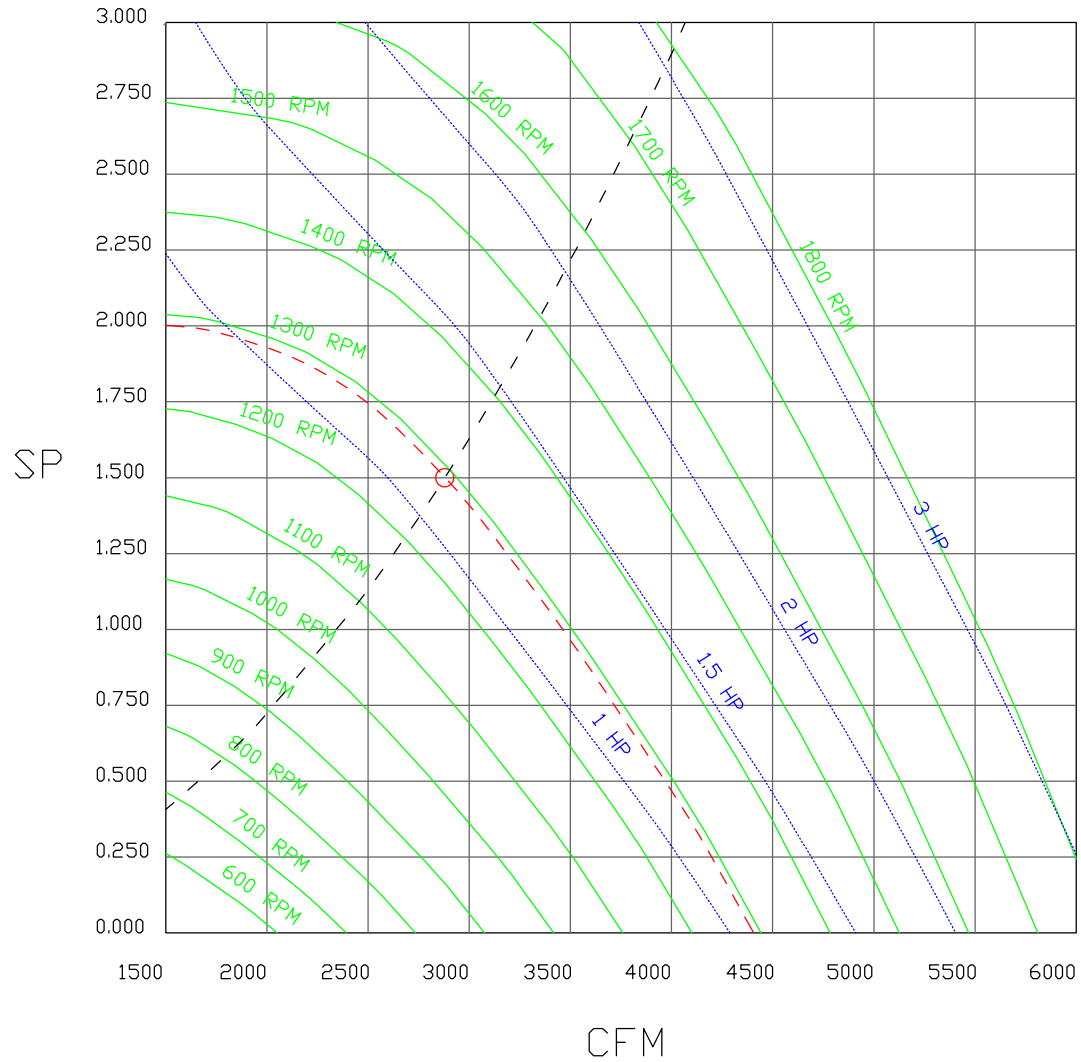
Your Title _____ Date _____



JOB Bob's Clam Hut - Portland r3	
LOCATION PORTLAND, ME, 04101	
DATE 1/26/2018	JOB # 3284507
DWG # 6	DRAWN BY BFC-21
REV.	SCALE 3/8" = 1'-0"

FAN#1 - EXHAUST PERFORMANCE CURVES.

2879 CFM, 1.5 SP @ 1289 RPM and 1.145 BHP at 25 feet and 70 deg F
 * Please note that these curves were adjusted for job specific temperature and altitude.



CUSTOMER APPROVAL TO MANUFACTURE:

Approved as Noted

Approved with NO Exception Taken

Revise and Resubmit

SIGNATURE _____

Your Title _____ Date _____



JOB Bob's Clam Hut - Portland r3	
LOCATION PORTLAND, ME, 04101	
DATE 1/26/2018	JOB # 3284507
DWG # 7	DRAWN BY BFC-21
REV.	SCALE 3/8" = 1'-0"

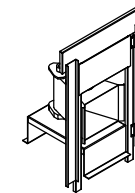
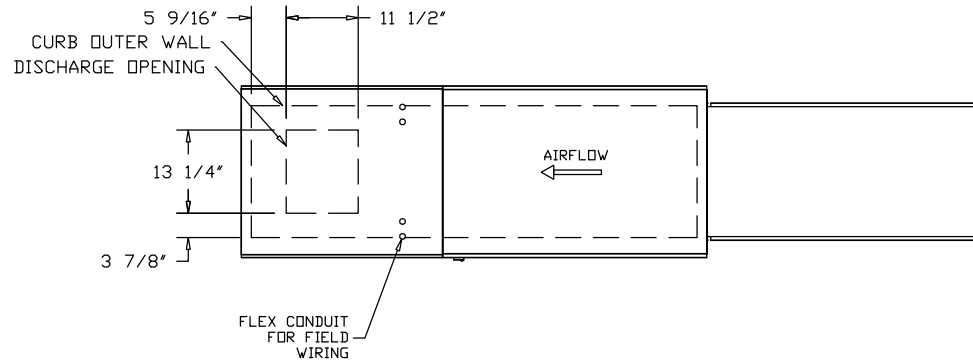
FAN #2 A1-D.250-G10 - HEATER

1. DIRECT GAS FIRED HEATED MAKE UP AIR UNIT WITH 10" BLOWER
2. INTAKE HOOD WITH EZ FILTERS
3. DOWN DISCHARGE - AIR FLOW RIGHT -> LEFT
4. MOTORIZED BACK DRAFT DAMPER 16" X 18" FOR SIZE 1 STANDARD & MODULAR HEATER UNITS W/EXTENDED SHAFT, STANDARD GALVANIZED CONSTRUCTION, 3/4" REAR FLANGE, TFB120S ACTUATOR INCLUDED
5. FULL CRATING FOR COMMERCIAL HEATERS FOR SHIPPING.
6. LOW FIRE START. ALLOWS THE BURNER CIRCUIT TO ENERGIZE WHEN THE MODULATION CONTROL IS IN A LOW FIRE POSITION.
7. GAS PRESSURE GAUGE, 0-35", 2.5" DIAMETER, 1/4" THREAD SIZE
8. GAS PRESSURE GAUGE, -5 TO +15 INCHES WC, 2.5" DIAMETER, 1/4" THREAD SIZE

NOTE: SUPPLY DUCT MUST BE INSTALLED TO MEET SMACNA STANDARDS. A MINIMUM STRAIGHT DUCT LENGTH EQUAL TO THREE TIMES THE SUPPLY DUCT EQUIVALENT DIAMETER MUST BE MAINTAINED DOWNSTREAM OF UNIT DISCHARGE UNLESS OTHERWISE SPECIFIED. DO NOT RELY ON UNIT TO SUPPORT DUCT IN ANY WAY.

SUPPLY SIDE HEATER INFORMATION:

WINTER TEMPERATURE = 0°F. TEMP. RISE = 85°F.
 BTUs CALCULATED OFF STANDARD AIR DENSITY
 OUTPUT BTUs AT ALTITUDE OF 0.0 ft. = 237854
 INPUT BTUs AT ALTITUDE OF 0.0 ft. = 258537



Direct Fired (DF) Profile Plate Assembly

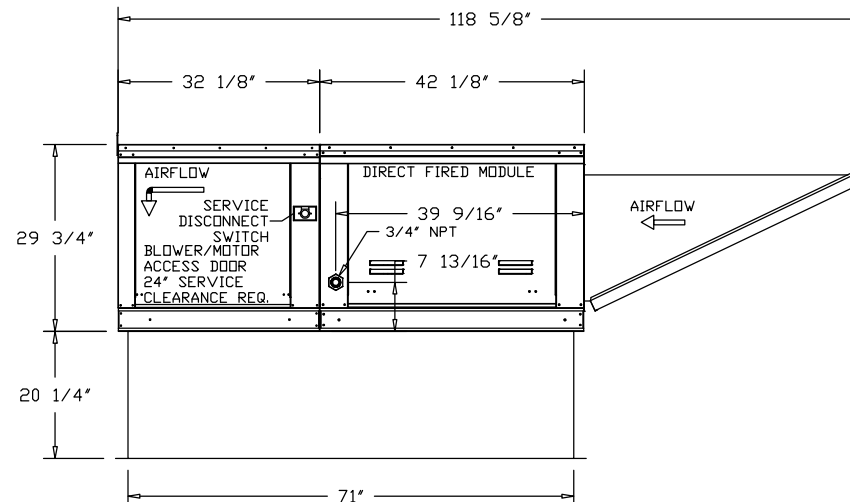
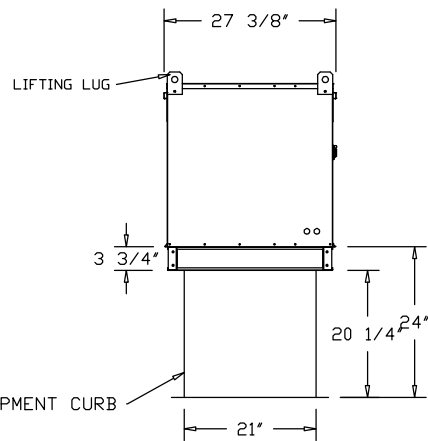
Direct Fired Profile Plate Specifications:

Description:
 Direct fired burners shall have patented (US Patent No. US6629523B2), self-adjusting profile plates designed to ensure proper air velocity and pressure drop across the burner. Profile plates shall allow burners to achieve clean combustion by limiting by-product levels to a maximum of 5ppm of carbon monoxide (CO), and 0.5ppm of nitrogen dioxide (NO2).

Application:
 Spring-loaded burner profile plates are engineered to automatically react to the momentum of a fresh air stream, without the need for any motors or actuators to mechanically adjust them. With this feature, all DF units are designed for demand control ventilation (DCV) requirements.

Certifications:
 All profile plate assemblies shall be included in the DF unit's ETL listing and comply with combined safety standards ANSI Z83.4 and CSA 3.7 (non-recirculating DF heaters) and ANSI Z83.18 (recirculating DF heaters).

General Construction:
 -Profile plates shall be formed from G90 galvanized steel.
 -Profile plates shall vary in size per unit.
 -Profile plates shall be mounted along the same plane as the discharge of the burner.
 -Design shall incorporate properly torqued, permanently mounted spring hinges.
 -Spring hinges shall be made from plated steel.



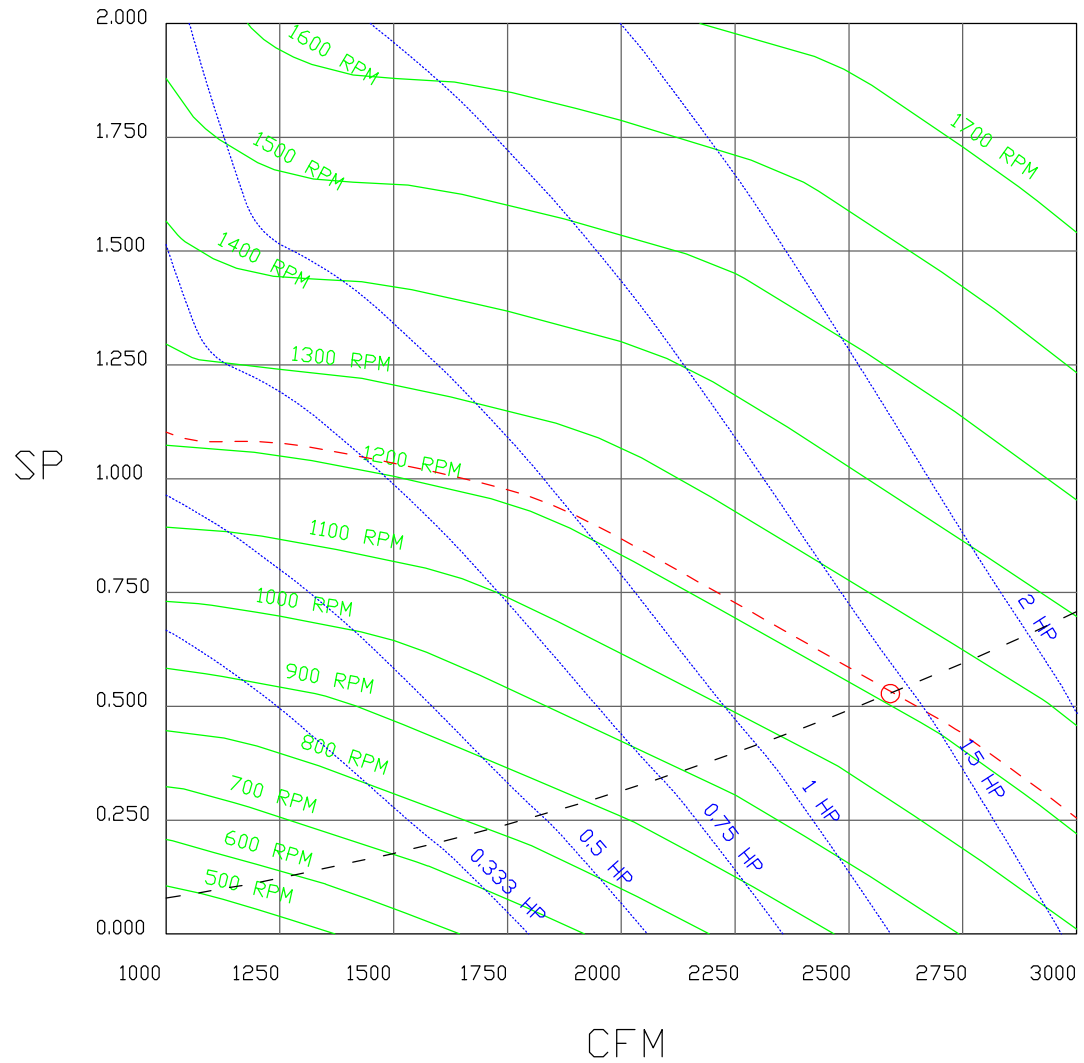
CUSTOMER APPROVAL TO MANUFACTURE:	
Approved as Noted	<input type="checkbox"/>
Approved with NO Exception Taken	<input type="checkbox"/>
Revise and Resubmit	<input type="checkbox"/>
SIGNATURE _____	
Your Title _____	Date _____



JOB Bob's Clam Hut - Portland r3	
LOCATION PORTLAND, ME, 04101	
DATE 1/26/2018	JOB # 3284507
DWG # 8	DRAWN BY BFC-21
REV.	SCALE 3/8" = 1'-0"

FAN#2 - HEATER PERFORMANCE CURVES.

2591 CFM, 0.528 SP @ 1215 RPM and 1.41 BHP at 237 feet and 85 deg F
 * Please note that these curves were adjusted for job specific temperature and altitude.



CUSTOMER APPROVAL TO MANUFACTURE:

Approved as Noted

Approved with NO Exception Taken

Revise and Resubmit

SIGNATURE _____

Your Title _____ Date _____

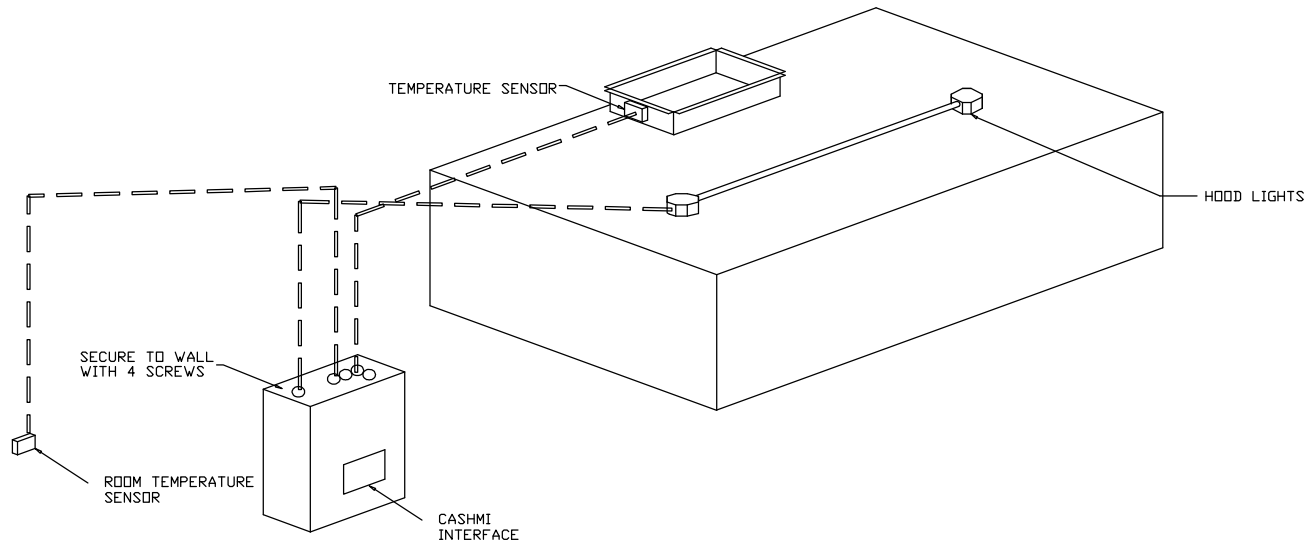


CAPTIVE AIRE

JOB Bob's Clam Hut - Portland r3	
LOCATION PORTLAND, ME, 04101	
DATE 1/26/2018	JOB # 3284507
DWG # 9	DRAWN BY BFC-21
REV.	SCALE 3/8" = 1'-0"

ELECTRICAL PACKAGES - Job#3284507

NO.	TAG	PACKAGE #	LOCATION	SWITCHES		OPTION	FANS CONTROLLED				
				LOCATION	QUANTITY		TYPE	Ø	H.P.	VOLT	FLA
1		SC-F100111FP	Wall Mount In SS Box	05 - SS Wall Mount Box	1 Light 1 Fan	Smart Controls Thermostatic Control	Exhaust	3	3.000	208	9.5
							Supply	1	2.000	230	9.3



WALL MOUNTED CONTROL CENTER

CUSTOMER APPROVAL TO MANUFACTURE:

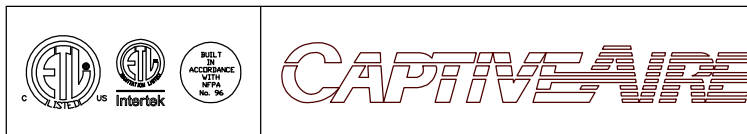
Approved as Noted

Approved with NO Exception Taken

Revise and Resubmit

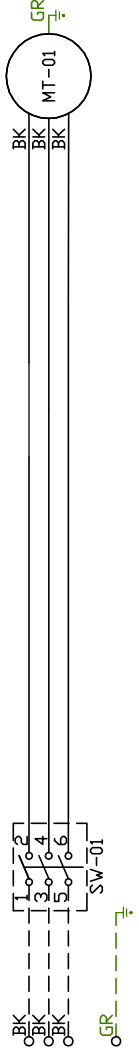
SIGNATURE _____

Your Title _____ Date _____



<i>JOB</i> Bob's Clam Hut - Portland r3	
<i>LOCATION</i> PORTLAND, ME, 04101	
<i>DATE</i> 1/26/2018	<i>JOB #</i> 3284507
<i>DWG #</i> 10	<i>DRAWN BY</i> BFC-21
<i>REV.</i>	<i>SCALE</i> 3/8" = 1'-0"

1
2
3
4
5
6
7
8
9
10
11
12
13
14
15
16
17
18
19
20
21
22
23



Installed Options

Label	Component Description	Location
MT-01	Fan Motor	[2]
SW-01	Main disconnect switch	[2]

MOTOR_INF0
EXHAUST
3HP-208V-3P-9.5FLA

ELECTRICAL_INFORMATION
MOTOR/CTRL MCA: 11.9A
MOTOR/CTRL MOP: 20A

- NOTES
- DENOTES FIELD WIRING
 - ___ DENOTES INTERNAL WIRING
- WIRE COLOR
- BK - BLACK
 - BL - BLUE
 - BR - BROWN
 - OR - ORANGE
 - RD - RED
 - WH - WHITE
 - YW - YELLOW
 - GR - GREEN
 - GY - GRAY
 - PR - PURPLE
 - PK - PINK

Direct Fired Heater Wiring

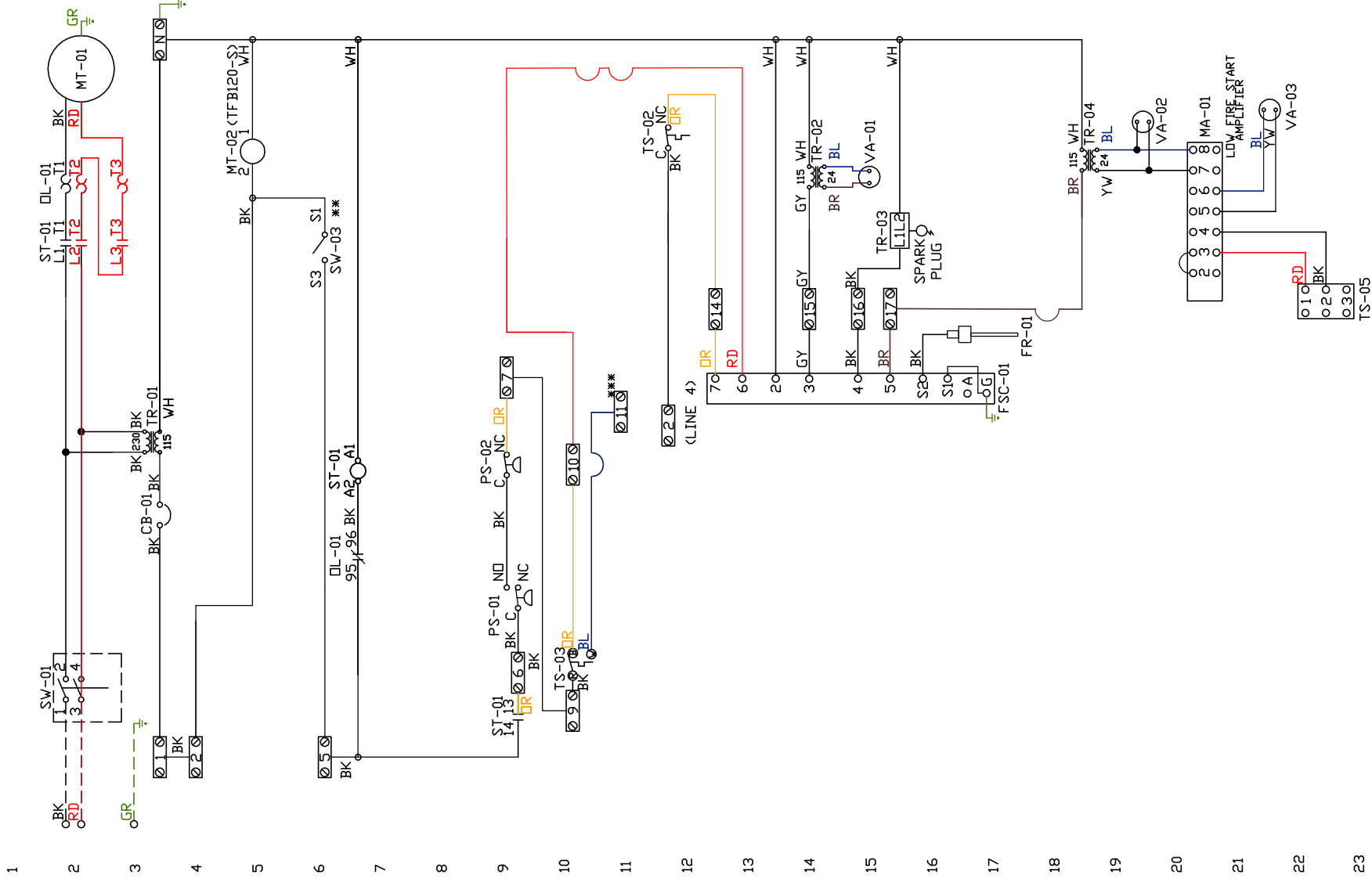
JOB 3284507 - Bob's Clam Hut - Portland r3

DRAWING NUMBER DF3284507-2

SHIP DATE 1/26/2018

MODEL A1-D.250-G10

ATTENTION ELECTRICIAN!
 DROP FOR DISCONNECT CONNECTION
 IS FACTORY SUPPLIED
 CONNECT POWER TO THE DROP



Installed Options

Motorized Back Draft Damper

 Discharge Temp. Control

Label	Component Description	Location
CB-01	Circuit breaker (2amp)	[3]
FR-01	Flame rod	[16]
FSC-01	Fireeye FSC	[11-14]
MA-01	Modulating amplifier	[19]
MT-01	Supply motor	[2]
DM-01	Damper motor	[5]
DL-01	Supply motor overload	[21,7]
PS-01	Low Airflow Switch	[9]
PS-02	High Airflow Switch	[9]

ST-01	Supply motor contactor	[21,7,19]
SV-01	Main disconnect switch	[2]
SV-03	Damper end limit switch	[4]
TR-01	Power transformer(200V/230V)	[12]
TR-02	Power transformer(20V/240V)	[12]
TR-03	Ignition transformer	[14]
TR-04	Power transformer(20V/117V)	[17]
TS-02	High temp. limit switch	[10]
TS-03	Intake Air Sensor	[10]
TS-05	Discharge Air Sensor	[21]
VA-01	Pilot gas valve	[13]
VA-02	Main gas valve	[18]
VA-03	Modulating gas valve	[20]

MOTOR INFO
 SUPPLY 2HP 230V-1P-9.3FLA
 DAMPER MOTOR: 100-5K10
 OVERLOAD: 195-KC10

ELECTRICAL INFORMATION
 MOTOR/CTRL CIRCUIT MCA: 12VA
 MOTOR/CTRL CIRCUIT MOP: 20A

NOTES
 - - - DENOTES FIELD WIRING
 _____ DENOTES INTERNAL WIRING

** TERMINALS S4 AND S6 USED ON NF & AF SERIES ACTUATORS
 *** TERMINAL 11 PROVIDES COOLING CONNECTION

WIRE COLOR	SOCKET STYLE
BK-BLACK	NO
BL-BLUE	4
BR - BROWN	2
DR - ORANGE	1
GY - GREEN	NC
GR - GRAY	6
RD - RED	7
WH - WHITE	8
PK - PINK	9
PR - PURPLE	10

Installation Wiring

DRAWING NUMBER RP3284507-2

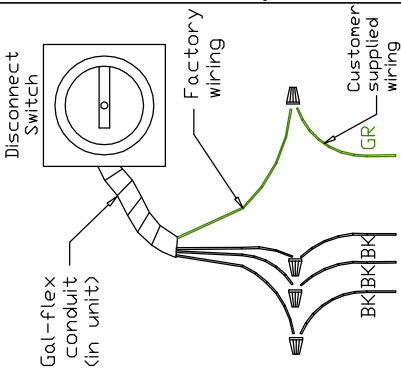
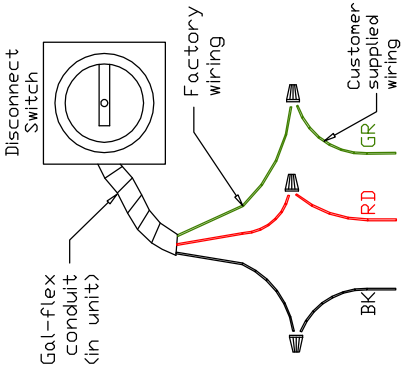
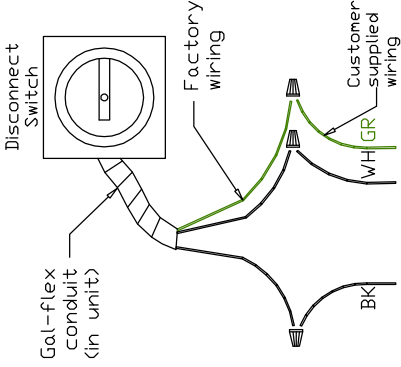
SHIP DATE 1/26/2018

MODEL A1-D.250-G10

120 V 1 PH.

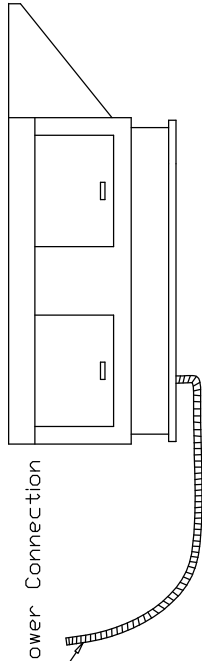
240 V 1 PH.

208/460/600 V 3 PH.



Installed Options

See above details.



NOTES

WIRE COLOR

BK	-	BLACK	YW	-	YELLOW
BL	-	BLUE	GR	-	GREEN
BR	-	BROWN	GY	-	GRAY
OR	-	ORANGE	PR	-	PURPLE
RD	-	RED	PK	-	PINK
WH	-	WHITE			

JOB NO
3284507

MODEL NUMBER
SC-F10011FP

DRAWN BY
INSTALL

DESCRIPTION OF OPERATION:
Mixed Voltage w/ control for 1 3Ph Exhaust Fan, 1 220V 1Ph Supply Fan, Exhaust on in Fire, Lights out in Fire, Fan(s) On/Off Thermostatically Controlled. Room temperature sensor shipped loose for field installation. INVERTER DUTY 3 PHASE MOTOR REQUIRED FOR USE WITH VFD.

JOB NAME
Bob's Clam Hut - Portland r3

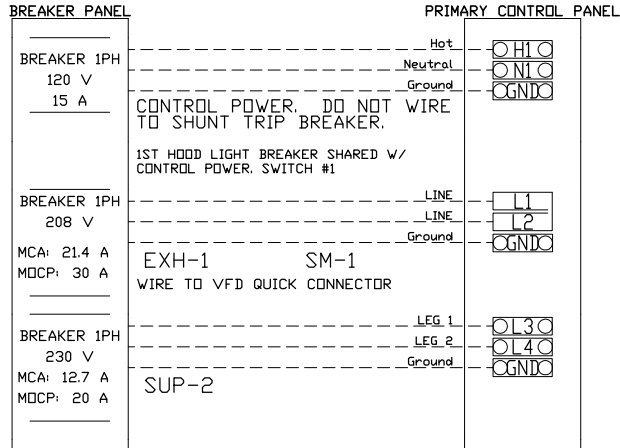
DATE
1/26/2018

DWG NO
ECP #1-1

BREAKER PANEL TO PRIMARY CONTROL PANEL

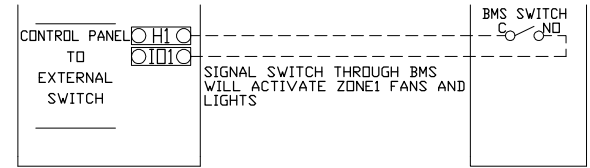
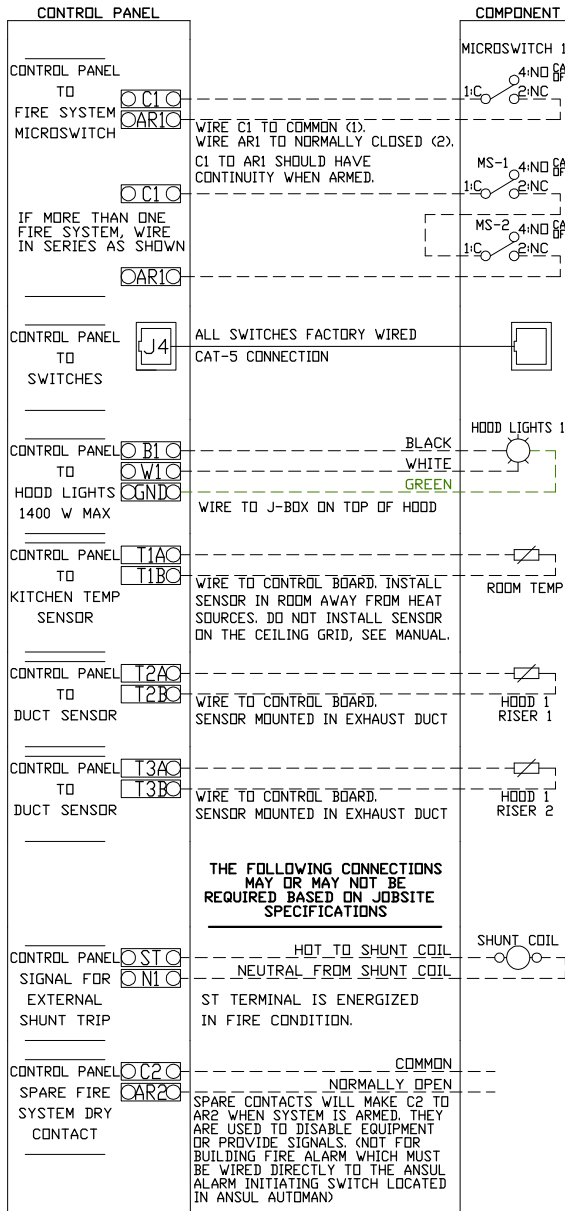
Responsibility: Electrician

BREAKER SIZE SHOWN IS THE MAXIMUM ALLOWED



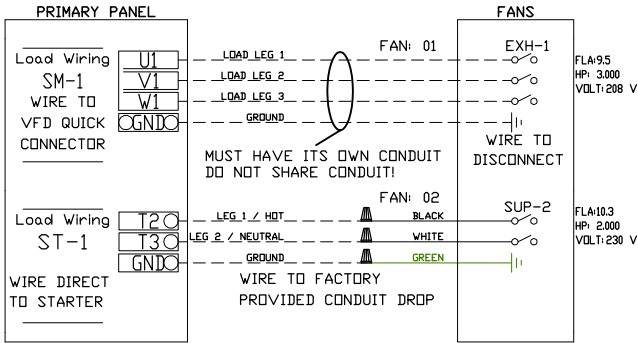
CONTROL PANEL TO ACCESSORY ITEMS

Responsibility: Electrician



CONTROL PANEL TO FANS

Responsibility: Electrician



THE FOLLOWING CONNECTIONS MAY OR MAY NOT BE REQUIRED BASED ON JOBSITE SPECIFICATIONS

SHUNT COIL

HOT TO SHUNT COIL
NEUTRAL FROM SHUNT COIL

ST TERMINAL IS ENERGIZED IN FIRE CONDITION.

COMMON NORMALLY OPEN

SPARE CONTACTS WILL MAKE C2 TO AR2 WHEN SYSTEM IS ARMED. THEY ARE USED TO DISABLE EQUIPMENT OR PROVIDE SIGNALS. (NOT FOR BUILDING FIRE ALARM WHICH MUST BE WIRED DIRECTLY TO THE ANSUL ALARM INITIATING SWITCH LOCATED IN ANSUL AUTOMAN)

