



Bob's Clam Hut
109 Cumberland Avenue
Portland, Maine

OWNER
Bob's Clam Hut
315 U.S. Route 1
Kittery, Maine
Telephone: (207) 439-4233
Contact: Michael Landgarten

DESIGNER
Paul Bennett Architect PC
25 West 31st Street, Floor 7
New York, New York 10001
Telephone: (212) 209-1177
Contact: Lisa Wright

ENGINEER
Bennett Engineering, Inc.
7 Bennett Road, P.O. Box 297
Freetown, ME 04032
Telephone: (207) 865-9475
Contact: William Bennett

KITCHEN CONSULTANT
TriMark
505 Collins Street
South Portland, ME 02703-8039
Telephone: (508) 389-6000
Contact: Ed Dresser

DOB REVISIONS:
02-FEBRUARY-2018

REV. NO.	DATE	COMMENTS
02	February 2018	DOB REVISIONS

PROJECT
Bob's Clam Hut
109 Cumberland Avenue
Portland, Maine

TITLE
Life Safety Plan &
Accessibility Plan

DOC. NO.
G-103.00

SEAL & SIGNATURE	PAGE
	4 OF 15
	SCALE 3/16" = 1'-0"
	ISSUED 29-DECEMBER-2017
	REVISION 02-FEB-2018

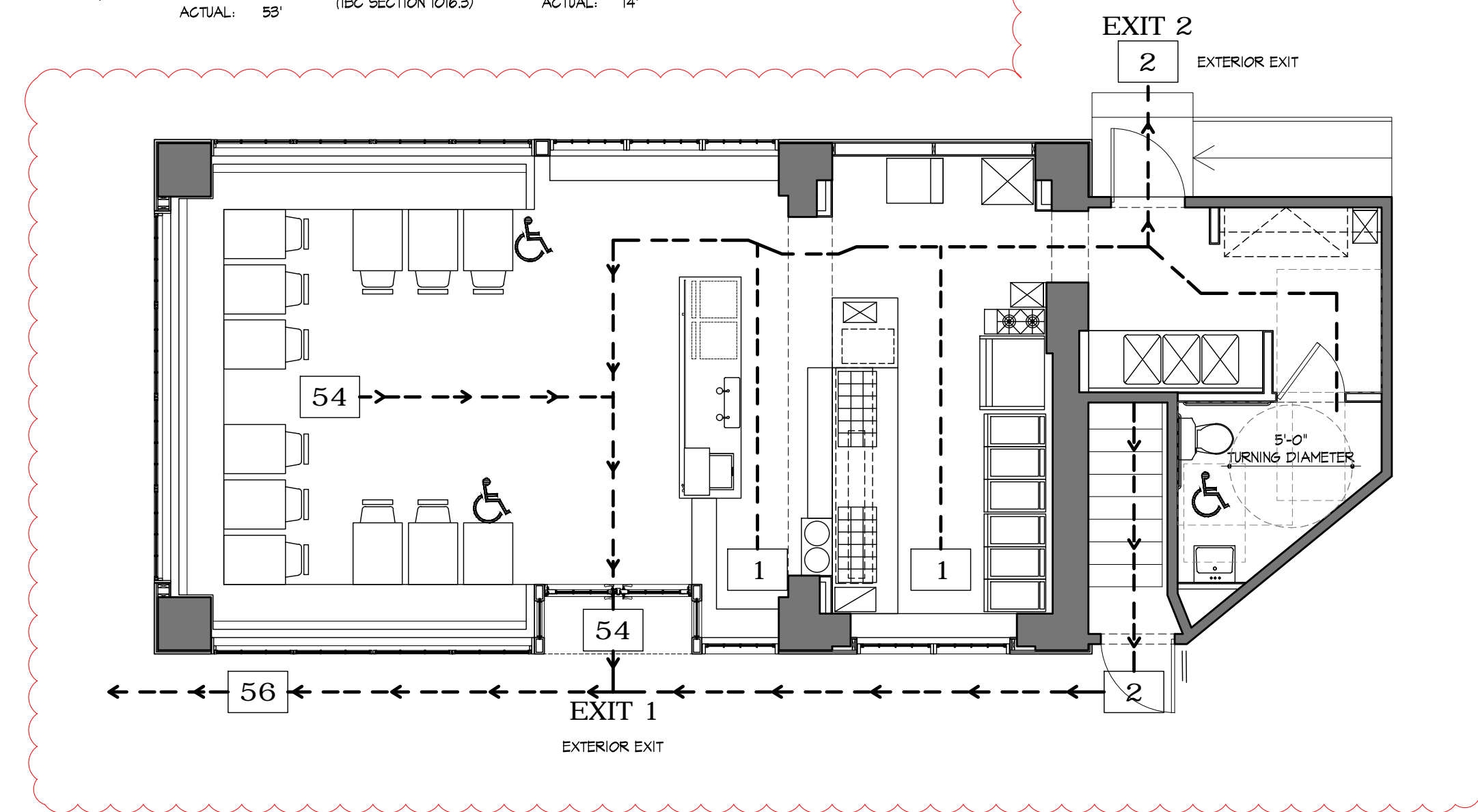
DESIGNER
PAUL BENNETT ARCHITECT PC
25 WEST 31ST STREET, NEW YORK, NEW YORK 10014
TEL. (212) 209-1177

OF EXITS:
(IBC TABLE 1015.1)
REQUIRED: 1
ACTUAL: 2

EXIT ACCESS TRAVEL DIST:
(IBC TABLE 1024.1)
MAX: 100'
ACTUAL: 55'

COMMON PATH OF TRAVEL:
(IBC SECTION 1015.3)
MAX: 75'
ACTUAL: 55'

DEAD END LIMIT:
(IBC SECTION 1016.3)
MAX: 20'
ACTUAL: 14'



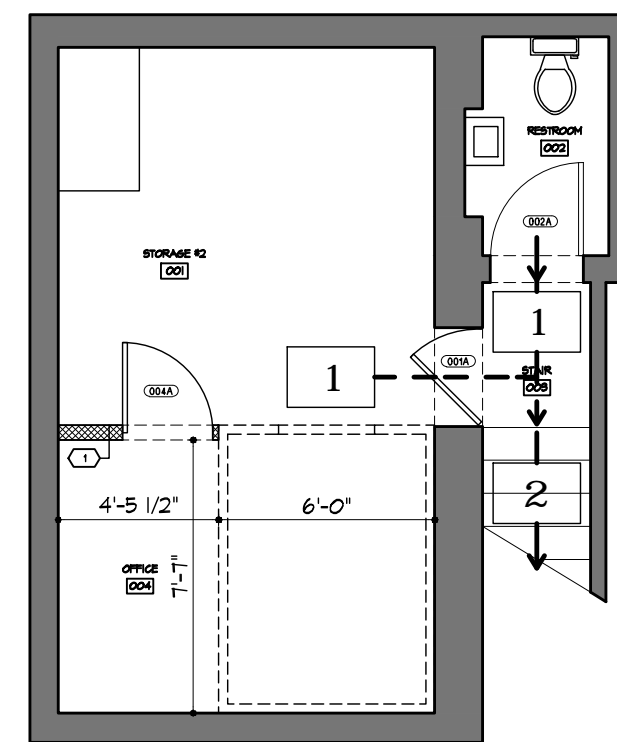
1 Life Safety Plan: Ground Floor
Scale: 3/16" = 1'-0"

OF EXITS:
(IBC TABLE 1015.1)
REQUIRED: 1
ACTUAL: 2

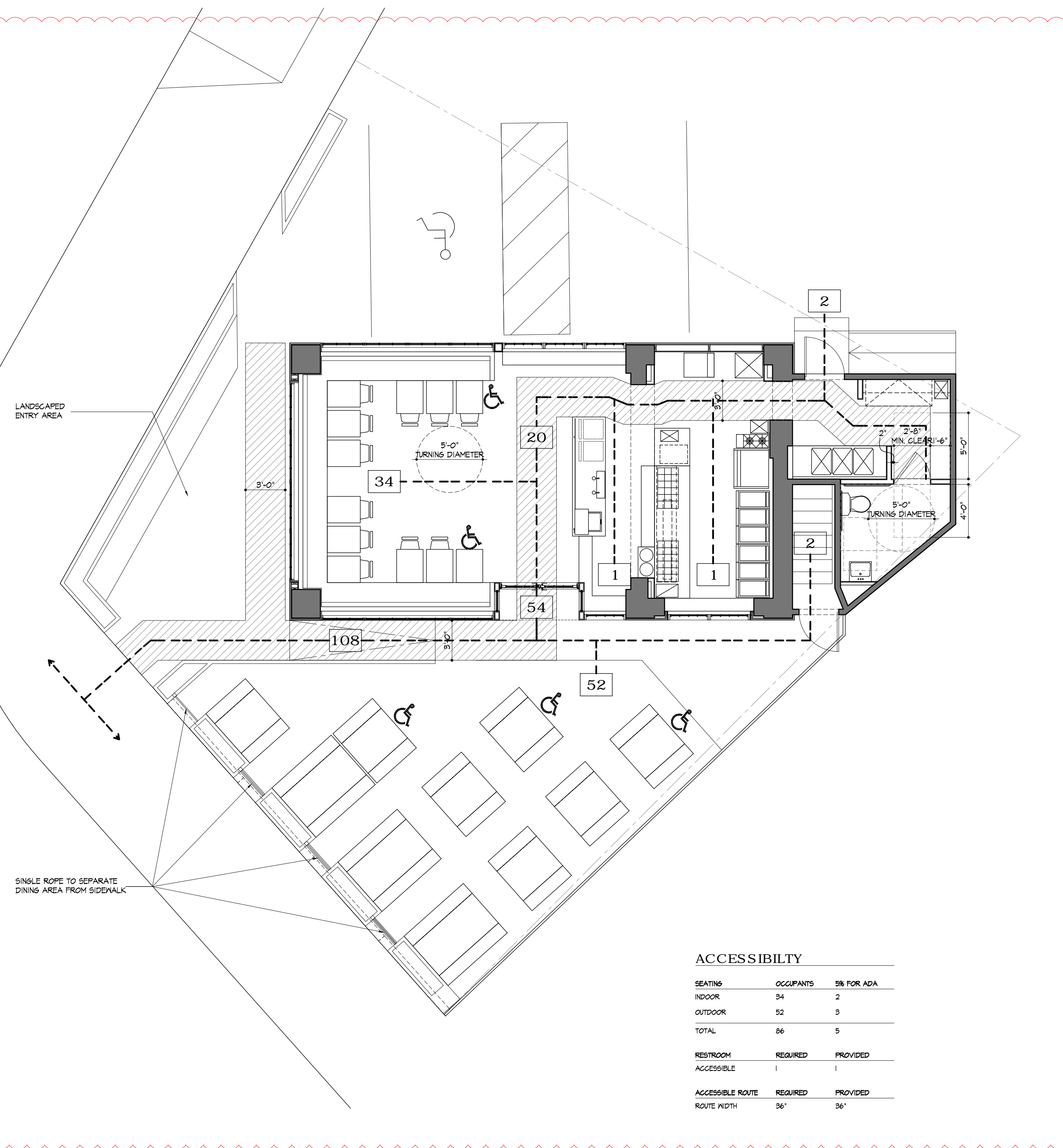
EXIT ACCESS TRAVEL DIST:
(IBC TABLE 1024.1)
MAX: 100'
ACTUAL: 10'

COMMON PATH OF TRAVEL:
(IBC SECTION 1015.3)
MAX: 75'
ACTUAL: 55'

DEAD END LIMIT:
(IBC SECTION 1016.3)
MAX: 20'
ACTUAL: 14'



2 Life Safety Plan: Cellar
Scale: 3/16" = 1'-0"



3 Accessible Path of Travel Plan
Scale: 3/16" = 1'-0"

ACCESSIBILITY

SEATING	OCCUPANTS	% FOR ADA
INDOOR	54	2
OUTDOOR	52	3
TOTAL	86	5

RESTROOM	REQUIRED	PROVIDED
ACCESSIBLE	1	1

ACCESSIBLE ROUTE	REQUIRED	PROVIDED
ROUTE WIDTH	36"	36"