



Bob's Clam Hut
109 Cumberland Avenue
Portland, Maine

OWNER

Bob's Clam Hut
315 U.S. Route 1
Kittery, Maine
Telephone: (207) 439-4233
Contact: Michael Landgarten

DESIGNER

Paul Bennett Architect PC
25 West 31st Street, Floor 7
New York, New York 10001
Telephone: (212) 209-1177
Contact: Lisa Wright

ENGINEER

Bennett Engineering, Inc.
7 Bennett Road, P.O. Box 297
Frescot, ME 04032
Telephone: (207) 865-9475
Contact: William Bennett

KITCHEN CONSULTANT

TriMark
505 Collins Street
South Amherst, MA 02703-8039
Telephone: (508) 389-6000
Contact: Ed Dresser

DOB REVISIONS:
02-FEBRUARY-2018

02-February-2018 DOB REVISIONS

REV. NO.	DATE	COMMENTS

PROJECT

Bob's Clam Hut
109 Cumberland Avenue
Portland, Maine

TITLE

Interior Elevations

DWG. NO.

A-203.00

SCALE & SIGNATURE

PAGE

12 OF 15

SCALE

3/8" = 1'-0"

ISSUED

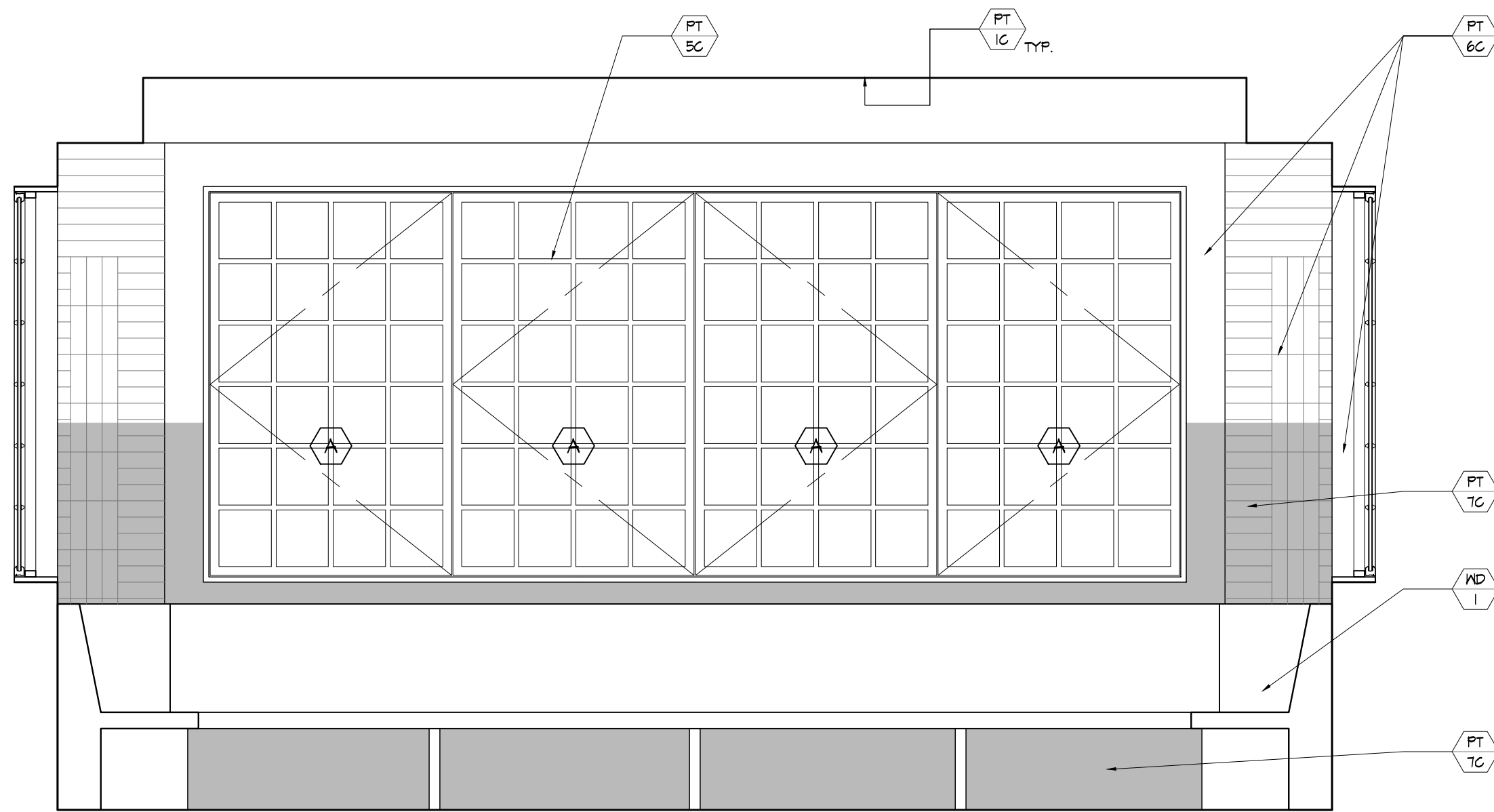
29-DECEMBER-2017

REVISION

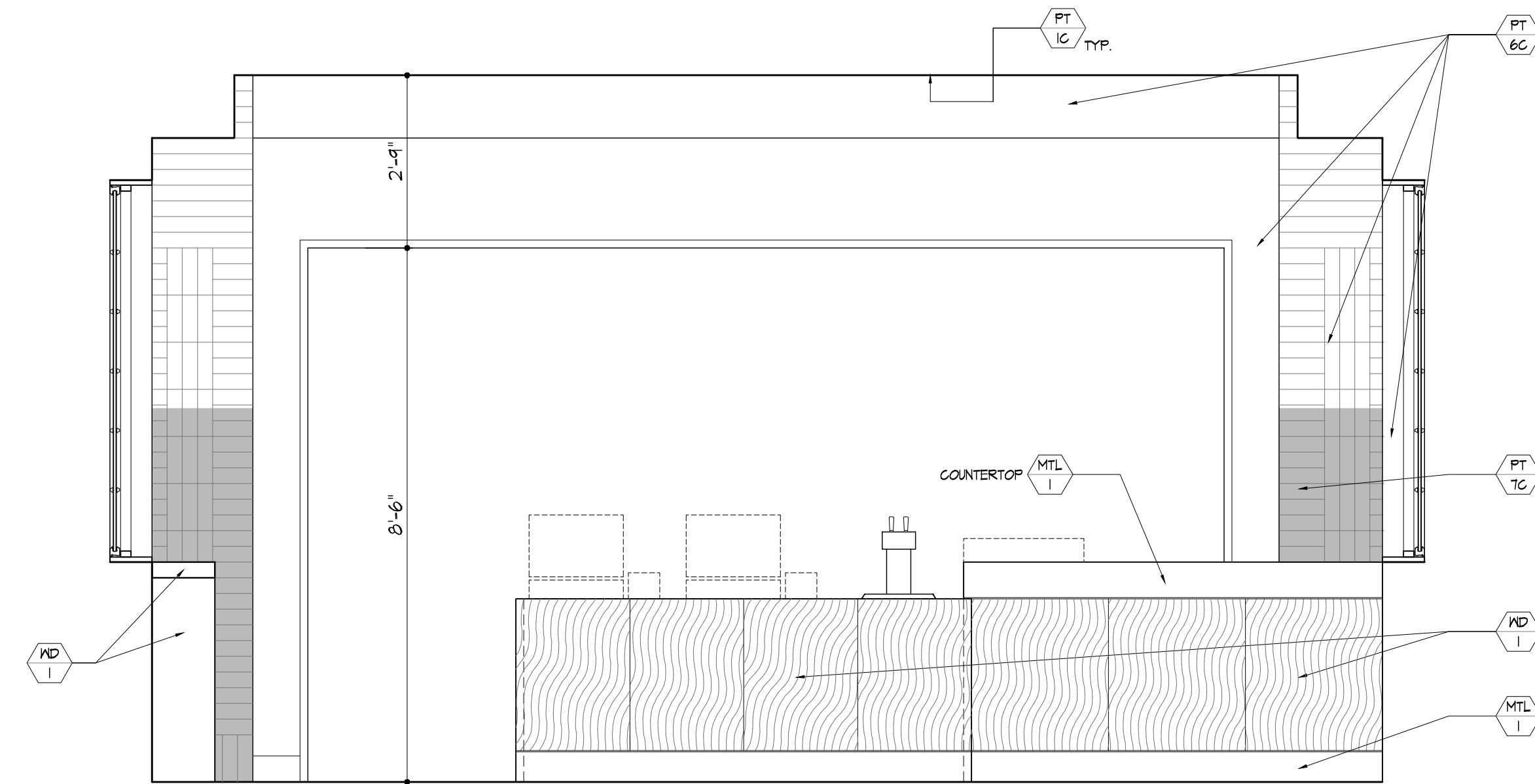
02-FEB-2018

DESIGNER

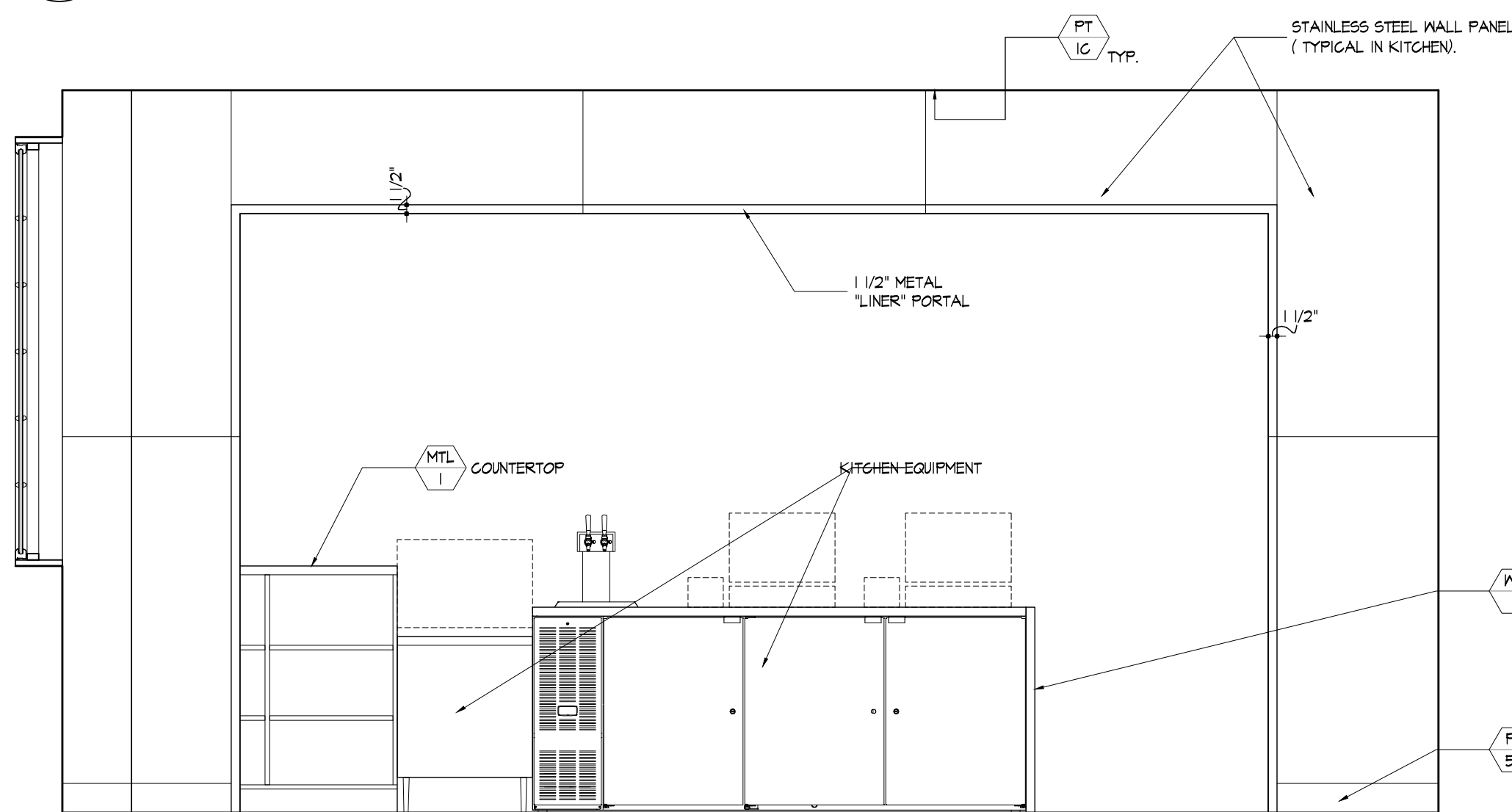
PAUL BENNETT ARCHITECT PC
25 WEST 31ST STREET, NEW YORK, NEW YORK 10014
TEL. (212) 209-1177



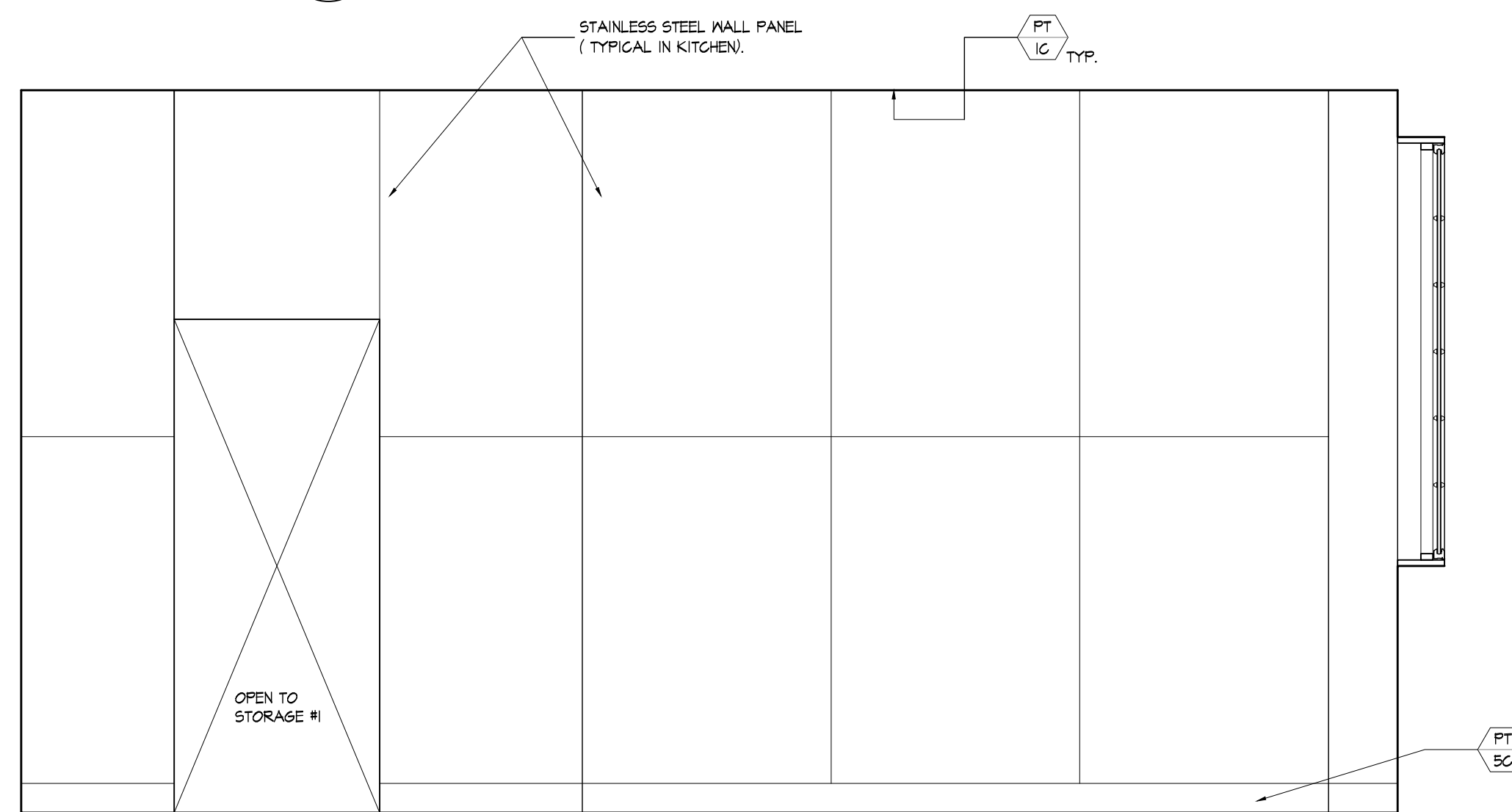
1 Elevation: Interior
Scale: 1/2" = 1'-0"



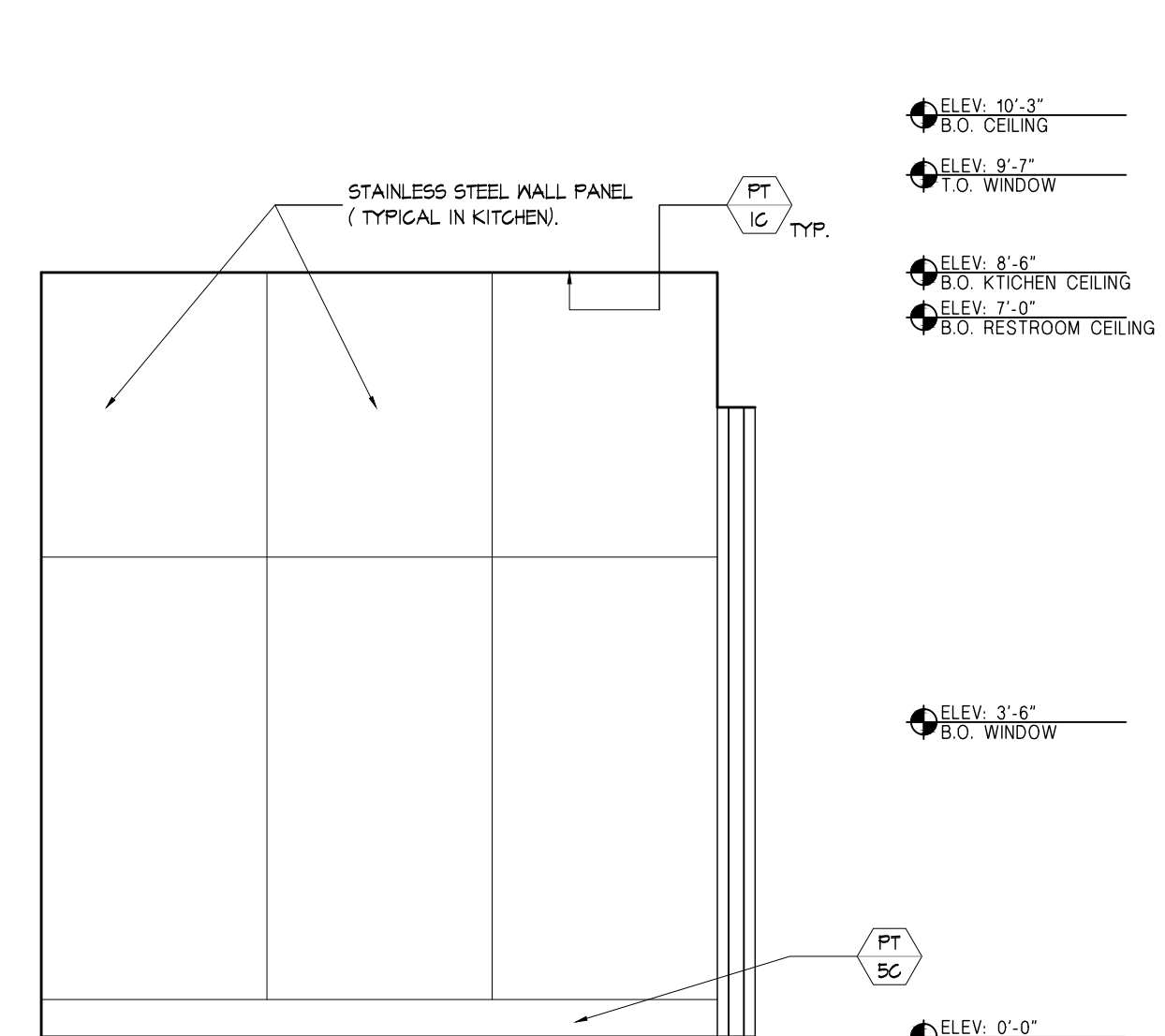
2 Elevation: Interior
Scale: 1/2" = 1'-0"



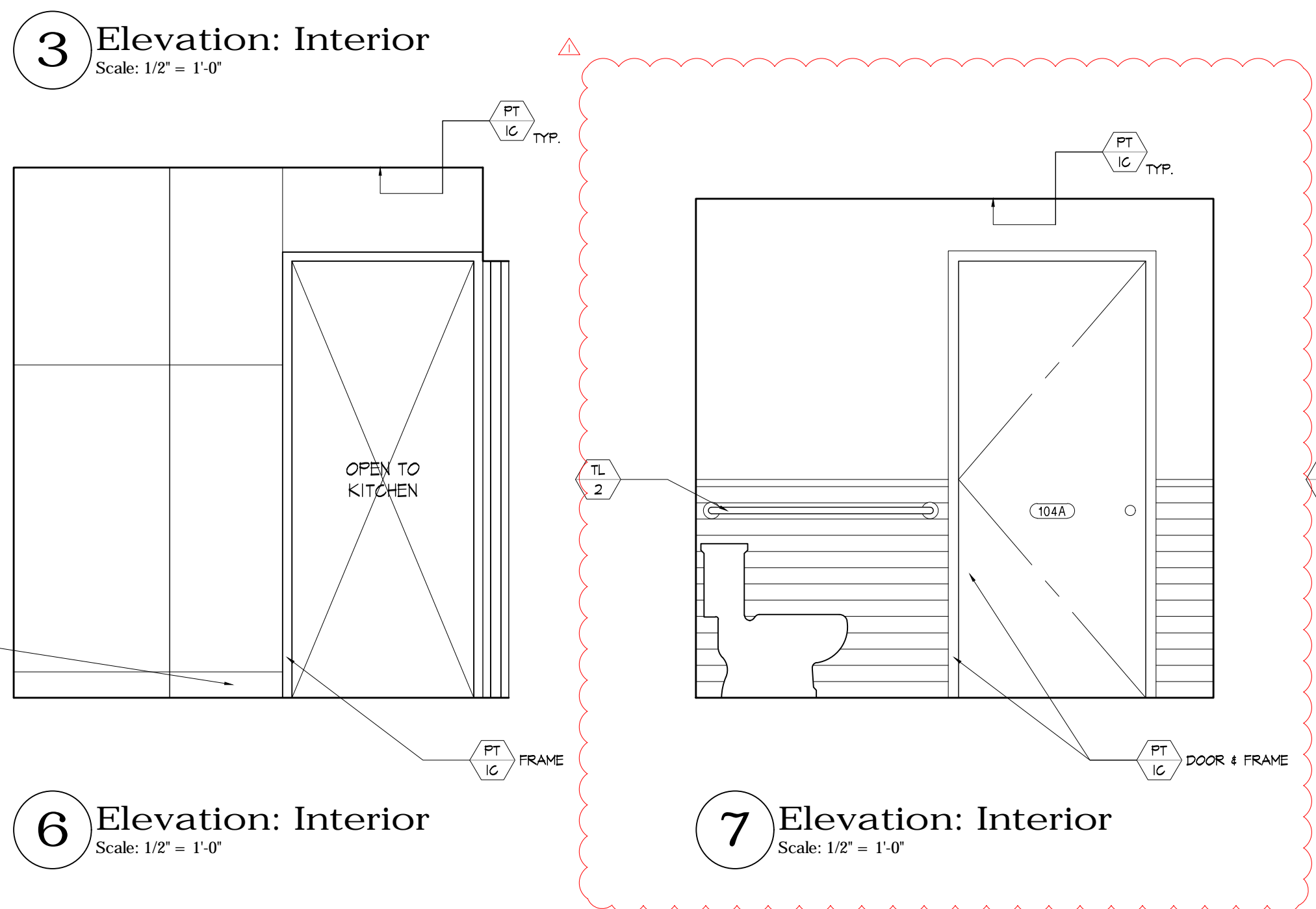
3 Elevation: Interior
Scale: 1/2" = 1'-0"



4 Elevation: Interior
Scale: 1/2" = 1'-0"

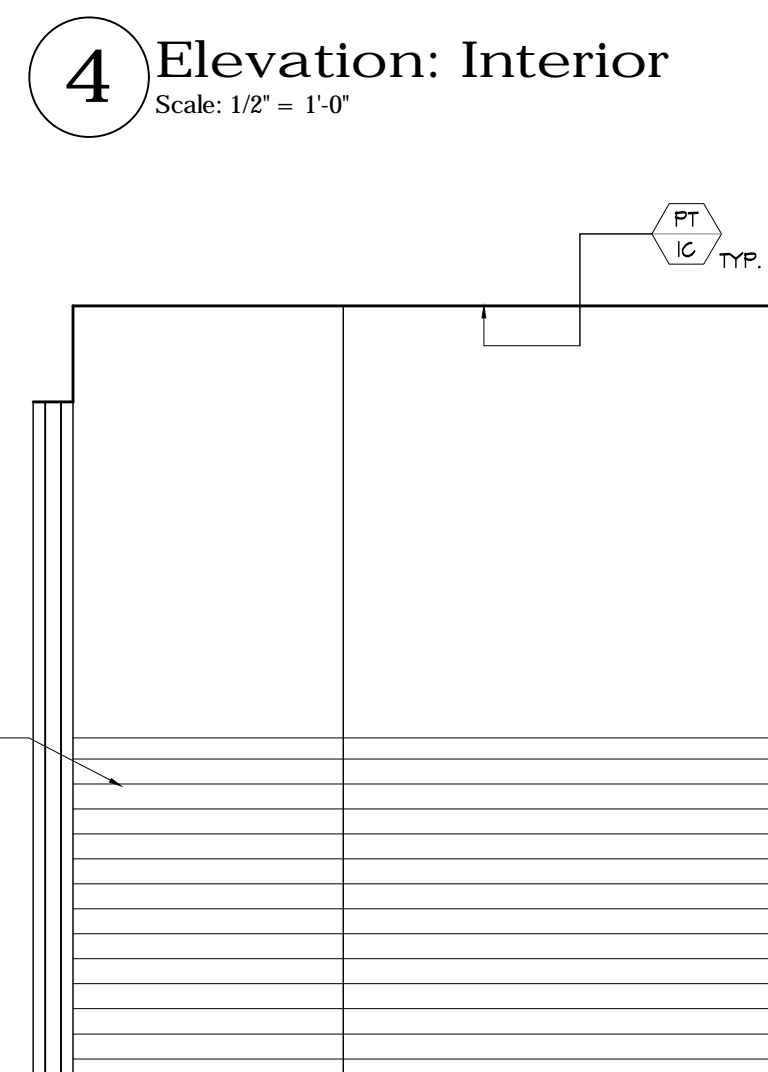


5 Elevation: Interior
Scale: 1/2" = 1'-0"

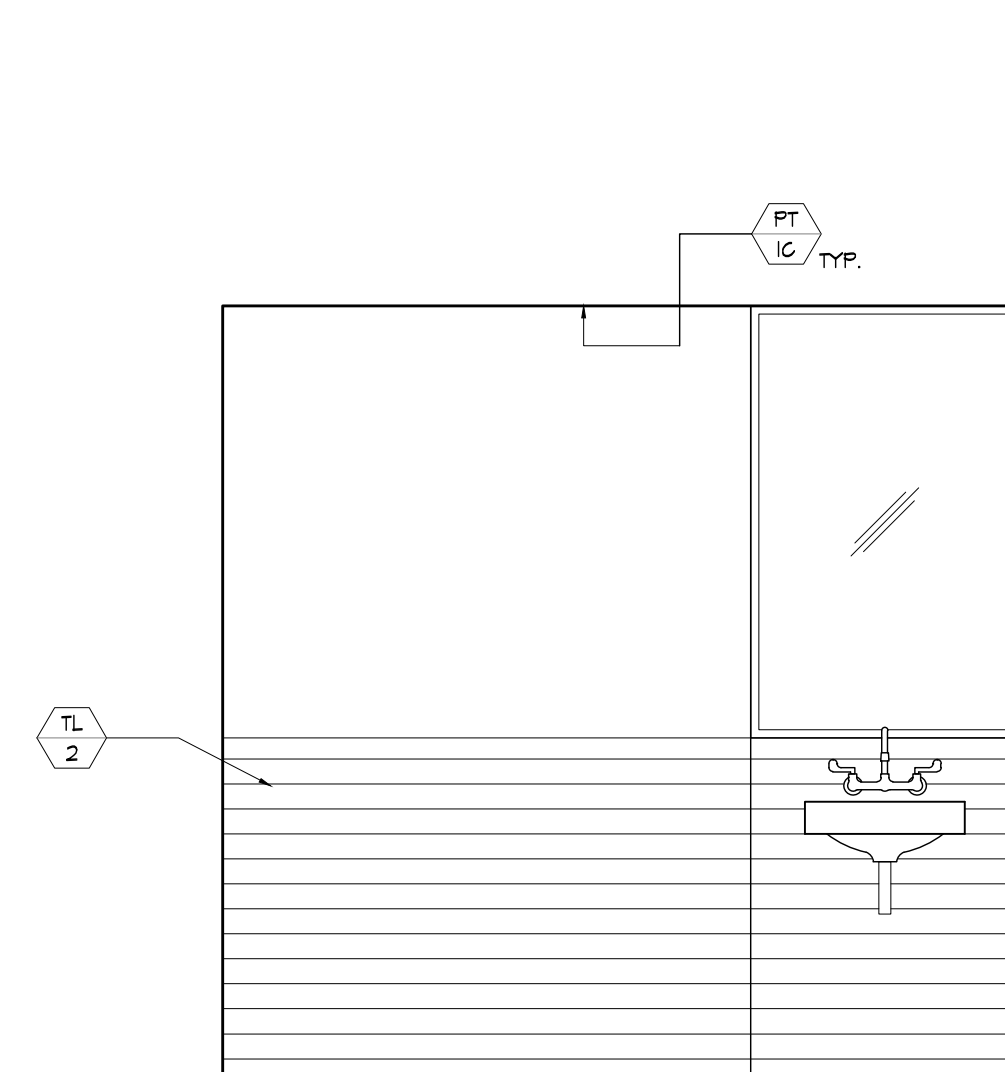


6 Elevation: Interior
Scale: 1/2" = 1'-0"

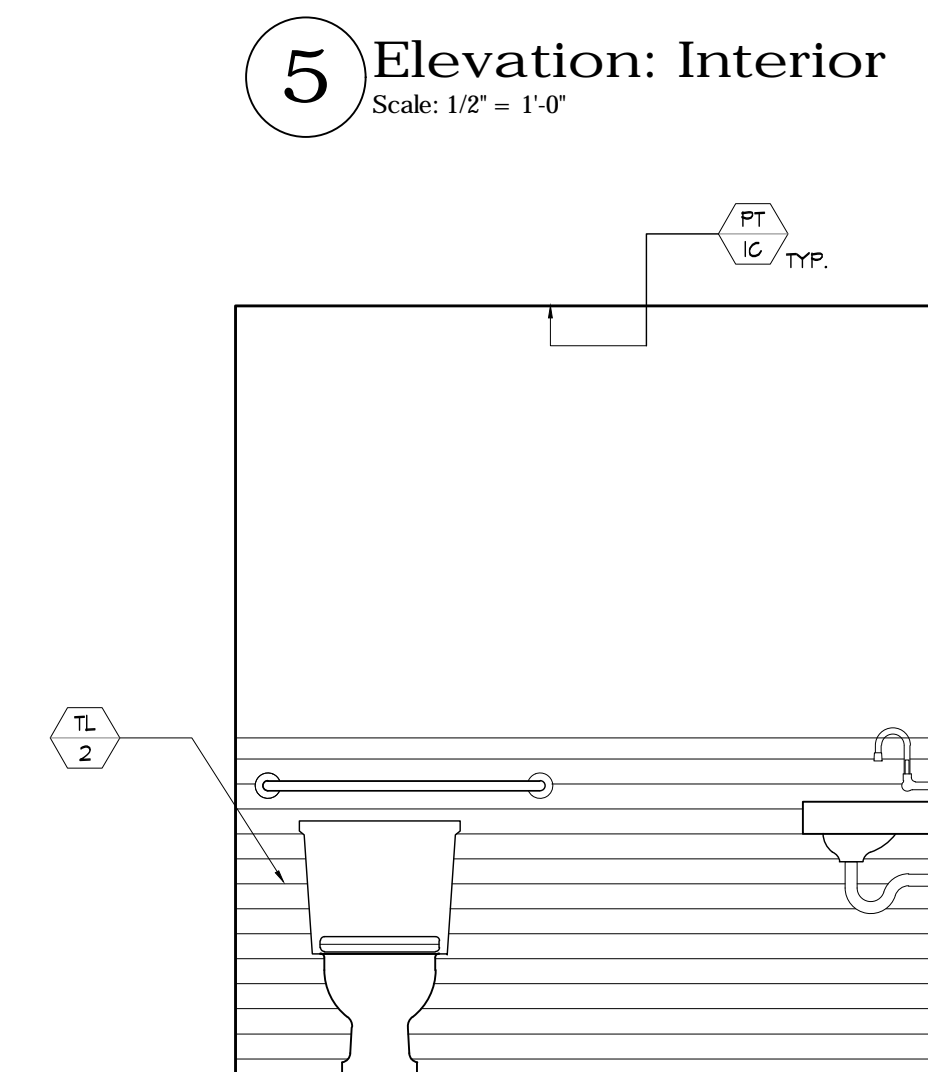
7 Elevation: Interior
Scale: 1/2" = 1'-0"



8 Elevation: Interior
Scale: 1/2" = 1'-0"



9 Elevation: Interior
Scale: 1/2" = 1'-0"



10 Elevation: Interior
Scale: 1/2" = 1'-0"

ELEV. 11'-3"
B.O. CEILING

ELEV. 9'-7"
T.O. WINDOW

ELEV. 8'-6"
B.O. KITCHEN CEILING

ELEV. 7'-9"
B.O. RESTROOM CEILING

ELEV. 3'-6"
B.O. WINDOW

ELEV. 0'-0"
F.O. FINISHED FLOOR

ELEV. 10'-3"
B.O. CEILING

ELEV. 9'-7"
T.O. WINDOW

ELEV. 8'-6"
B.O. KITCHEN CEILING

ELEV. 7'-9"
B.O. RESTROOM CEILING

ELEV. 3'-6"
B.O. WINDOW

ELEV. 0'-0"
F.O. FINISHED FLOOR

ELEV. 8'-6"
B.O. KITCHEN CEILING

ELEV. 7'-9"
B.O. RESTROOM CEILING

ELEV. 3'-6"
B.O. WINDOW

ELEV. 0'-0"
F.O. FINISHED FLOOR