



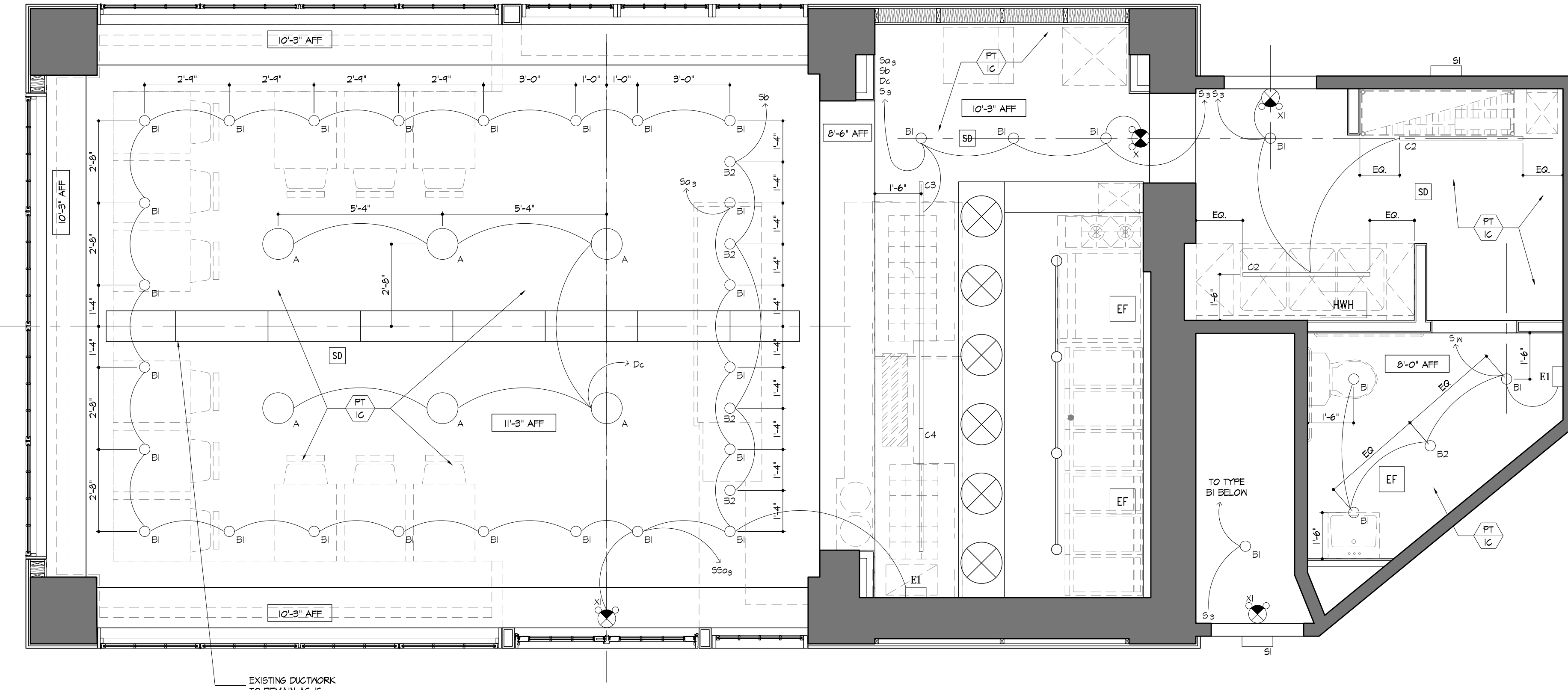
**Bob's Clam Hut**  
109 Cumberland Avenue  
Portland, Maine

OWNER  
**Bob's Clam Hut**  
315 U.S. Route 1  
Kittery, Maine  
Telephone: (207) 439-4233  
Contact: Michael Landgarten

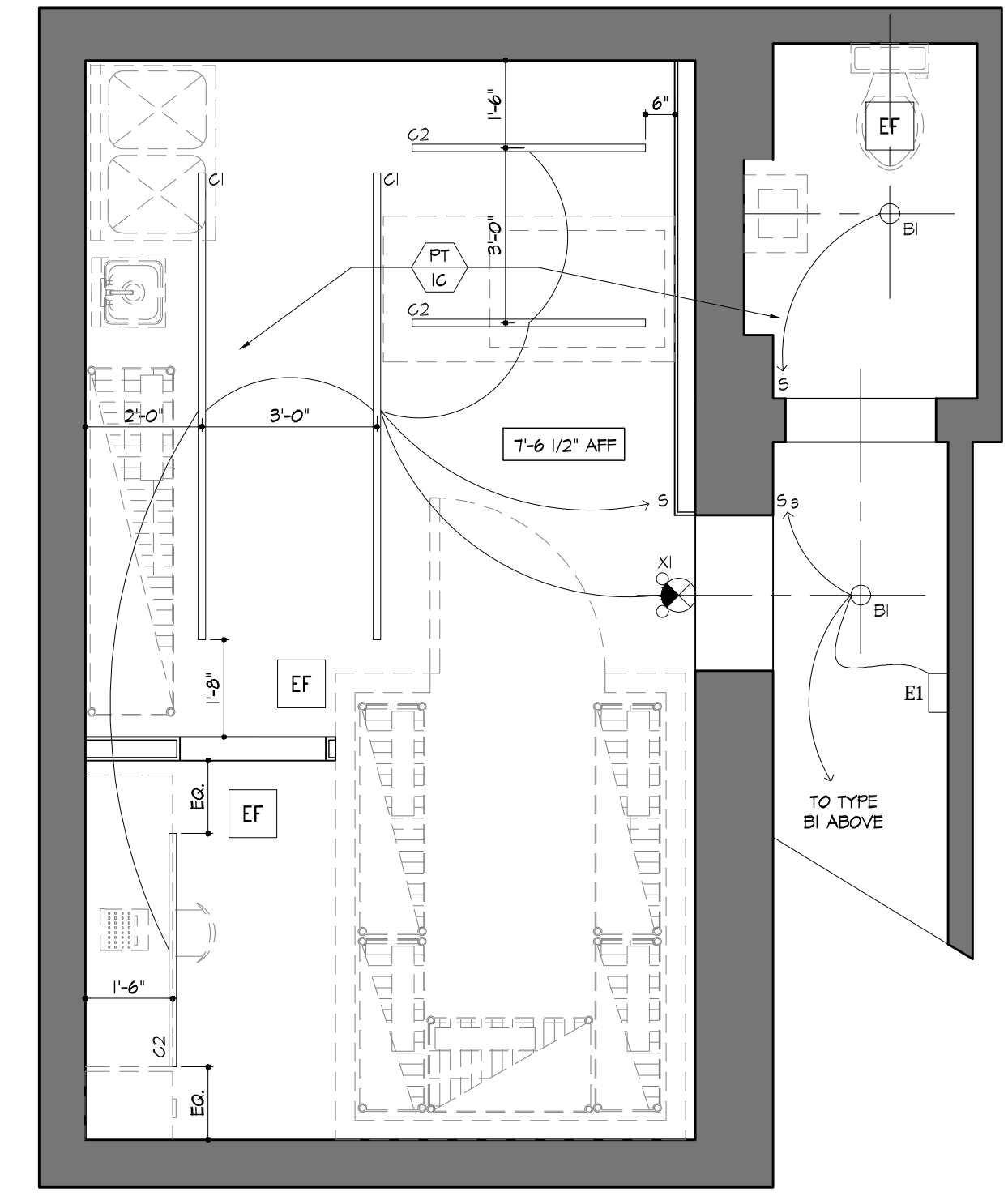
DESIGNER  
**Paul Bennett Architect PC**  
25 West 31st Street, Floor 7  
New York, New York 10001  
Telephone: (212) 209-1177  
Contact: Lisa Wright

ENGINEER  
**Bennett Engineering, Inc.**  
7 Bennett Road, P.O. Box 297  
Fresno, ME 04032  
Telephone: (207) 865-9475  
Contact: William Bennett

KITCHEN CONSULTANT  
**TriMark**  
505 Collins Street  
South Kingsboro, MA 02703-8039  
Telephone: (508) 389-6000  
Contact: Ed Dresser



**1** Reflected Ceiling Plan: Ground Floor  
Scale: 3/8" = 1'-0"



**2** Reflected Ceiling Plan: Basement  
Scale: 3/8" = 1'-0"

Lighting Schedule											
SYMBOL	NAME	QUANTITY	DESCRIPTION	MFR	MODEL NO.	LAMP	MAX WATTS	DIM	FINISH	SIZE	FIXTURE INFORMATION
A	LIGHT TYPE A	6	PENDANT LAMP	SCHOOLHOUSE LIGHTING	#RHODES 8"	PHILLIP 12E26A60-I	125W	YES	(DESIGNER TO CONFIRM)		PENDANT MTD DECORATIVE 8" DIA LIGHT
BI	LIGHT TYPE BI	34	MEDIUM BASE LAMP HOLDER	STONCO	#B300-BLK W/ PHILLIPS #PAR30S-3000K LAMP	PHILLIPS I-PAR30S-3000K	20W	NO	(DESIGNER TO CONFIRM)		DIE-CAST ALUMINUM MEDIUM BASE LAMP HOLDER W/ PAR30 LED LAMP
B2	LIGHT TYPE B2	5	PORCELAIN OUTLET BOX MOUNT	LEVITON	#814 W/ PHILLIPS #PAR30S-3000K LAMP	PHILLIPS I-PAR30S-3000K	20W	NO	(DESIGNER TO CONFIRM)		PORCELAIN MEDIUM BASE OUTLET BOX MOUNT LAMP HOLDER W/ PAR30 LED LAMP
C1	LIGHT TYPE C1	3	8' PENDANT MOUNTED 2 CIRCUIT DOWNLIGHT FLUORESCENT	A&L LIGHTING	AL8000-(48")-4-F32T8-120-55K	(4) PHILIPS F32T8/825	110W	NO	(DESIGNER TO CONFIRM)	48" L x 5.25" W x 5.625" H	PENDANT MTD FLUORESCENT STRIP LIGHT W/ 1/4 GAUGE STEEL WIRE GUARD AND INTEGRAL ELECTRONIC BALLAST. PROVIDE LED EQUIVALENT OF F32T8/8500K LAMP. PROVIDE W/ STEM SUSPENSION KIT.
C2	LIGHT TYPE C2	6	4' PENDANT MOUNTED 2 CIRCUIT DOWNLIGHT FLUORESCENT	A&L LIGHTING	AL8000-(48")-4-F32T8-120-55K	(4) PHILIPS F32T8/825	110W	NO	(DESIGNER TO CONFIRM)	48" L x 5.25" W x 5.625" H	SIMILAR TO TYPE C1 EXCEPT 48" LONG
C3	LIGHT TYPE C3	1	8' PENDANT	KENNAL	#FES3-46-1-45L35K -DCC-1-DV-2H-PP	44W / 3500K / 4560 LUMENS	44W	NO	WHITE	46" L x 4" W x 3.01" H	SURFACE MTD LINEAR LED W/ 20 GAUGE STEEL HOUSING, W/ STABILIZED PEARLESCEENT POLYCARBONATE SMOOTH LENS AND SILICONE GASKET TO SEAL DOORFRAME TO HOUSE. UL LISTED FOR DAMP LOCATIONS.
C4	LIGHT TYPE C4	1	4' PENDANT	KENNAL	#FES3-48-1-45L35K -DCC-1-DV-2H-PP	44W / 3500K / 4560 LUMENS	44W	NO	(DESIGNER TO CONFIRM)	48" L x 4" W x 3.01" H	SIMILAR TO TYPE C3 EXCEPT 48" LONG
E1	LIGHT TYPE E1	2	EMERGENCY LIGHT	KENNAL	#VLLU2	4W / 6000K		NO	(DESIGNER TO CONFIRM)	7.5/8" L x 4-1/4" W x 2-3/16" H	UNIVERSAL MTD THERMOPLASTIC LOW-PROFILE EMERGENCY LIGHT W/ ADJUSTABLE LED LAMP HEADS AND NICKEL CADMIUM BATTERY RATED TO OPERATE FIXTURE FOR 90 MINS UPON LOSS OF NORMAL POWER. UL LISTED FOR DAMP LOCATIONS.
SI	LIGHT TYPE SI	2	WALL MTD. COMPACT ARCHITECTURAL DIE CAST ALUMINUM EXTERIOR LED LIGHT W/ IESNA TYPE III DISTRIBUTION & BUTTON PHOTOCELL CONTROL. UL LISTED FOR WET LOCATIONS. FINISH: BRONZE	STONCO	#LPW16-512ZPCB	44W / 3500K / 4560 LUMENS		NO	BRONZE	12.02" L x 4.61" W x 5.11" H	WALL MTD. COMPACT ARCHITECTURAL DIE CAST ALUMINUM EXTERIOR LED LIGHT W/ IESNA TYPE III DISTRIBUTION AND BUTTON PHOTOCELL CONTROL. UL LISTED FOR WET LOCATIONS.
XI	LIGHT TYPE XI	5	EXIT SIGN/ EMERGENCY LIGHT	KENNAL	#VLLG6	3W / 6000K / 150 LUMENS		NO	(DESIGNER TO CONFIRM)	11-3/16" L x 4-4/16" W x 1-13/16" H	UNIVERSAL MTD THERMOPLASTIC COMBINATION EXIT SIGN/ EMERGENCY LIGHT W/ RED LETTERS. ADJUSTABLE LED LAMP HEADS AND NICKEL CADMIUM BATTERY RATED TO OPERATE FIXTURE FOR 90 MINS UPON LOSS OF NORMAL POWER. PROVIDE DIRECTIONAL ARROWS AS INDICATED ON DRAWINGS. UL LISTED FOR DAMP LOCATIONS.

- Legend**
- EXISTING
  - NEW CONSTRUCTION
  - SMOKE DETECTOR
  - EXIT SIGN W/ EMERGENCY LIGHTS
  - EXHAUST FAN
  - EMERGENCY LIGHT
  - HOT WATER HEATER

DOB REVISIONS:  
02-FEBRUARY-2018

REV NO	DATE	COMMENTS

PROJECT  
**Bob's Clam Hut**  
109 Cumberland Avenue  
Portland, Maine

TITLE  
**Reflected Ceiling Plans**

FIG. NO.  
**A-102.00**

SEAL & SIGNATURE	PAGE <b>8 OF 15</b>
	SCALE <b>3/8" = 1'-0"</b>
	ISSUED <b>29-DECEMBER-2017</b>
	REVISION <b>02-FEB.-2018</b>

DESIGNER  
**PAUL BENNETT ARCHITECT PC**  
25 WEST 31ST STREET, NEW YORK, NEW YORK 10001  
TEL: (212) 209-1177