



**Bob's Clam Hut**  
109 Cumberland Avenue  
Portland, Maine

**OWNER**

Bob's Clam Hut  
315 U.S. Route 1  
Kilby, Maine  
Telephone: (207) 439-4233  
Contact: Michael Landgarten

**DESIGNER**

Paul Bennett Architect PC  
25 West 31st Street, Floor 7  
New York, New York 10001  
Telephone: (212) 209-1177  
Contact: Lisa Wright

**ENGINEER**

Bennett Engineering, Inc.  
7 Bennett Road, P.O. Box 297  
Freeport, ME 04032  
Telephone: (207) 865-9475  
Contact: William Bennett

**KITCHEN CONSULTANT**

TriMark  
505 Collins Street  
South Westboro, MA 02703-8039  
Telephone: (508) 399-6000  
Contact: Ed Dresser

DOB REVISIONS:  
12-FEBRUARY-2018

REV. NO.	DATE	COMMENTS
02	February-2018	DOB REVISIONS

**PROJECT**  
Bob's Clam Hut  
109 Cumberland Avenue  
Portland, Maine

**TITLE**  
Life Safety Plan &  
Accessibility Plan

**DWG. NO.**

**G-103.00**

**SEAL & SIGNATURE**

**PAGE**

4 OF 15

**SCALE**

3/16" = 1'-0"

**ISSUED**

29-DECEMBER-2017

**REVISION**

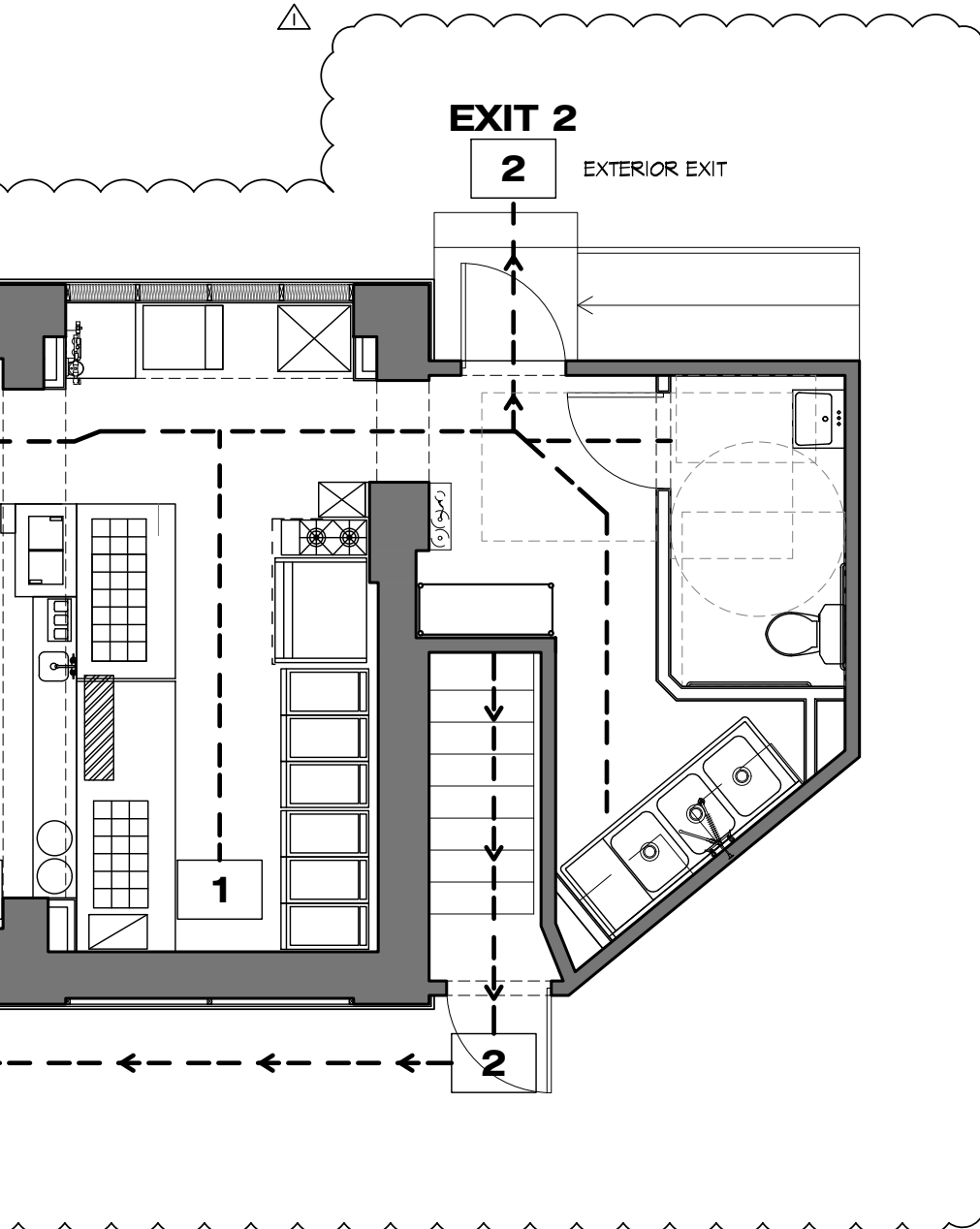
12-FEB-2018

**DESIGNER**

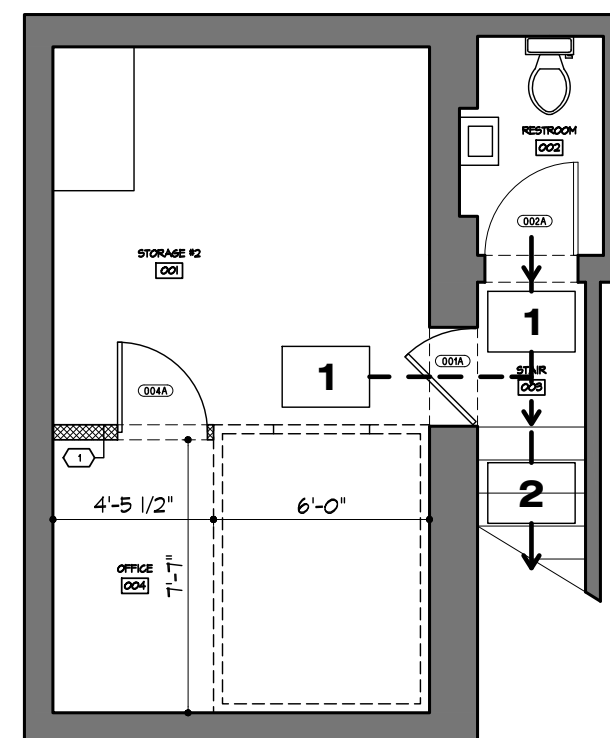
**PAUL BENNETT ARCHITECT PC**  
25 WEST 31ST STREET, NEW YORK, NEW YORK 10001  
TEL (212) 209-1177

# OF EXITS:  
(IBC TABLE 1015.1)  
REQUIRED : 1  
ACTUAL : 2  
COMMON PATH OF TRAVEL:  
(IBC SECTION 1015.3)  
MAX. ACTUAL: 75'  
59'

EXIT ACCESS TRAVEL DIST.  
(IBC TABLE 1024.1)  
MAX. ACTUAL: 100'  
59'



**1 Life Safety Plan: Ground Floor**  
Scale: 3/16" = 1'-0"

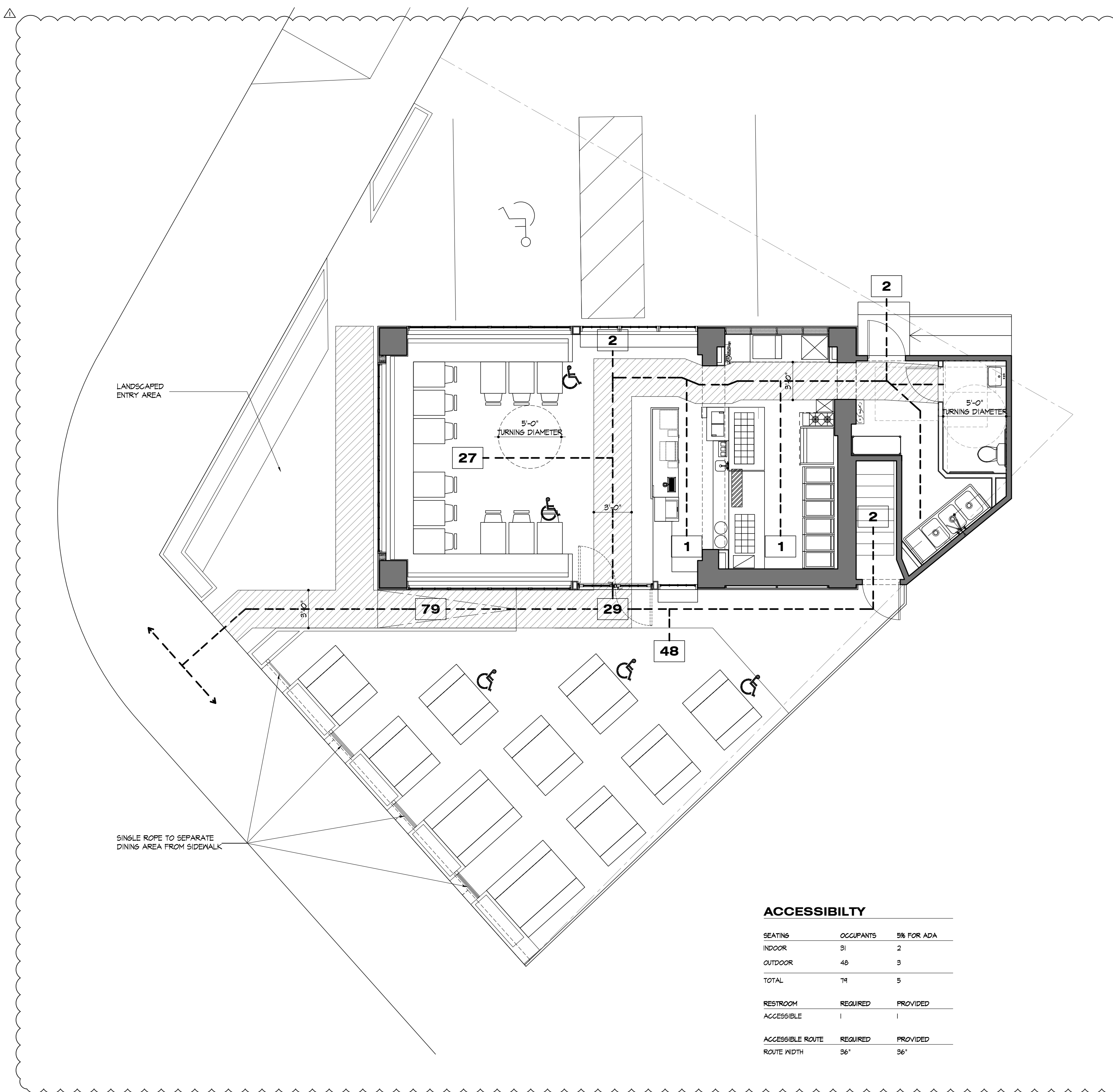


# OF EXITS:  
(IBC TABLE 1015.1)  
REQUIRED : 1  
ACTUAL : 2  
COMMON PATH OF TRAVEL:  
(IBC SECTION 1015.3)  
MAX. ACTUAL: 75'  
59'

EXIT ACCESS TRAVEL DIST.  
(IBC TABLE 1024.1)  
MAX. ACTUAL: 100'  
10'

**2 Life Safety Plan: Cellar**  
Scale: 3/16" = 1'-0"

**3 Accessible Path of Travel Plan**  
Scale: 3/16" = 1'-0"



**ACCESSIBILITY**

SEATING	OCCUPANTS	% FOR ADA
INDOOR	31	2
OUTDOOR	48	3
TOTAL	79	5

RESTROOM	REQUIRED	PROVIDED
ACCESSIBLE	1	1

ACCESSIBLE ROUTE	REQUIRED	PROVIDED
ROUTE WIDTH	36"	36"