



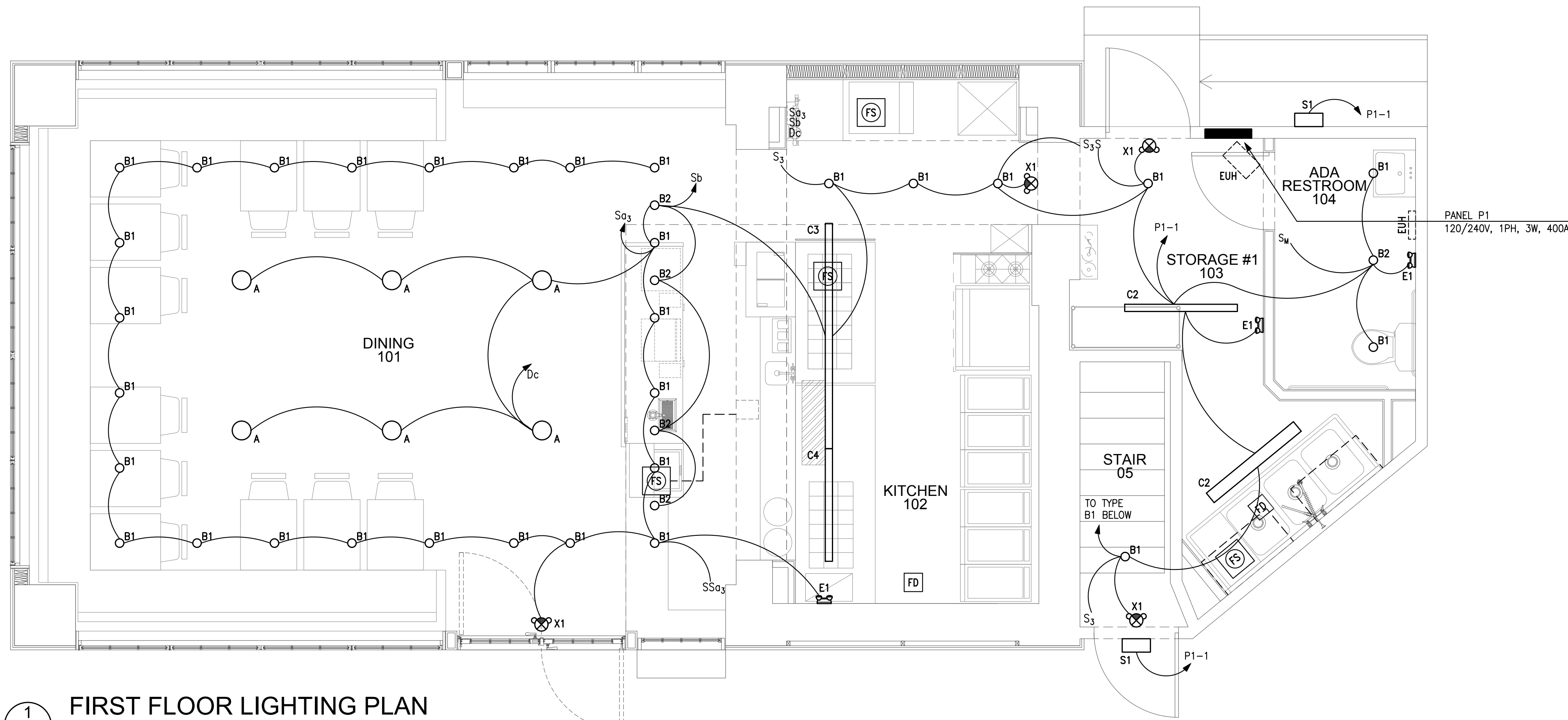
Bob's Clam Hut
109 Cumberland Avenue
Portland, Maine

OWNER
Bob's Clam Hut
315 U.S. Route 1
Kittery, Maine
Telephone: (207) 439-4233
Contact: Michael Landgarten

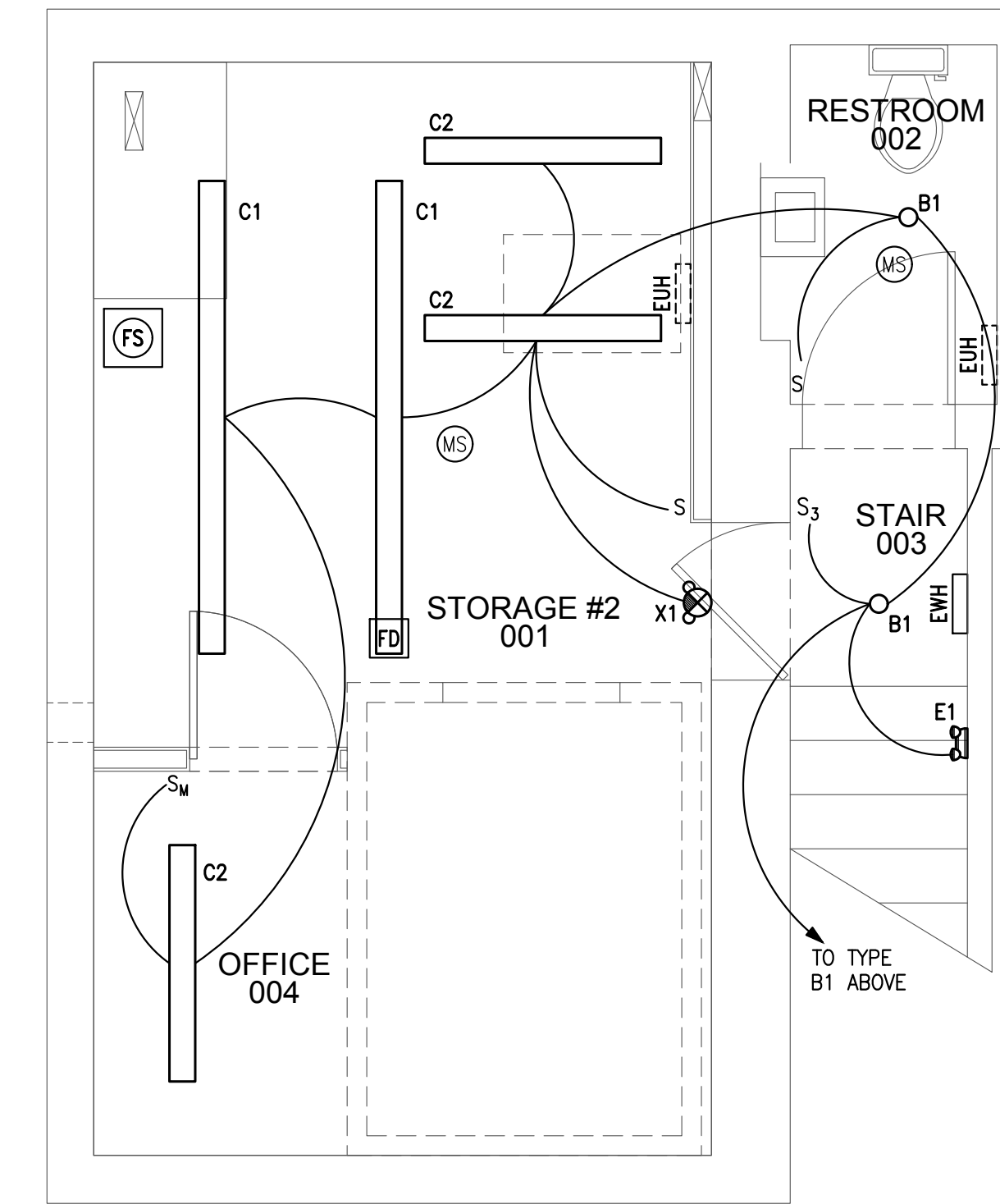
DESIGNER
Paul Bennett Architect PC
25 West 31st Street, Floor 7
New York, New York 10001
Telephone: (212) 209-1177
Contact: Lisa Wright

DESIGNER
Bennett Engineering, Inc.
7 Bennett Road, P.O. Box 297
Freeport, ME 04032
Telephone: (207) 865-9475
Contact: William Bennett

KITCHEN CONSULTANT
TriMark
505 Collins Street
South Amherst, MA 02703-8039
Telephone: (508) 399-6000
Contact: Ed Dresser



1 FIRST FLOOR LIGHTING PLAN
E-100.00 SCALE: 3/8" = 1'-0"



2 BASEMENT LIGHTING PLAN
E-100.00 SCALE: 3/8" = 1'-0"

LIGHTING FIXTURE SCHEDULE					
TYPE	MANUFACTURER	ORDING INFORMATION	LED INFORMATION	FIXTURE INFORMATION	DESCRIPTION
A	SCHOOLHOUSE LIGHTING	#RHODES 8"	12W / 3000K / 900 LUMENS	8"	PENDANT MTD DECORATIVE 8" DIA LIGHT
B1	STONCO	#3300-BLK W/ PHILLIPS # PAR30S-3000K LAMP	12W / 3000K / 900 LUMENS	8"	DIE-CAST ALUMINUM MEDIUM BASE LAMP HOLDER W/PAR30 LED LAMP
B2	LEVITON	#9874 W/ PHILLIPS # PAR30S-3000K LAMP	12W / 3000K / 900 LUMENS	8"	PORCELAIN MEDIUM BASE OUTLET BOX MOUNT LAMP HOLDER W/PAR30 LED LAMP
C1	A&L LIGHTING	#AL800-96"-F32T8-120-SSK	15W / 3500K / 1900 LUMENS	96" L x 5.25" W x 5.625" H	PENDANT MTD FLUORESCENT STRIP LIGHT W/14 GAUGE STEEL WIRE GUARD AND INTEGRAL ELECTRONIC BALLAST. PROVIDE LED EQUIVALENT OF F32T8/3500K LAMP. PROVIDE W/STEM SUSPENSION KIT
C2	A&L LIGHTING	#AL800-48"-F32T8-120-SSK	15W / 3500K / 1900 LUMENS	48" L x 5.25" W x 5.625" H	SIMILAR TO TYPE C1 EXCEPT 48" LONG
C3	KENNAL	#FES3-96"-1-4SL35K-DCC-1-DV-2H-PP	49W / 3500K / 4560 LUMENS	96" L x 4" W x 3.07" H	SURFACE MTD LINEAR LED W/20 GAUGE STEEL HOUSING, UV STABILIZED PEARLESCENT POLYCARBONATE SMOOTH LENS AND SILICONE GASKET TO SEAL DOORFRAME TO HOUSE. UL LISTED FOR DAMP LOCATIONS, FINISH: WHITE
C4	KENNAL	#FES3-48"-1-4SL35K-DCC-1-DV-2H-PP	49W / 3500K / 4560 LUMENS	48" L x 4" W x 3.07" H	SIMILAR TO TYPE C3 EXCEPT 48" LONG
E1	KENNAL	#VILLU2	4W / 6000K	7-5/8" L x 4-1/4" H x 2-3/16" D	UNIVERSAL MTD THERMOPLASTIC LOW PROFILE EMERGENCY LIGHT W/ADJUSTABLE LED LAMP HEADS AND NICKEL CADMIUM BATTERY RATED TO OPERATE FIXTURE FOR 90 MINS UPON LOSS OF NORMAL POWER. UL LISTED FOR DAMP LOCATIONS, FINISH: WHITE.
S1	STONCO	#PWP16-51B2PCB	49W / 3500K / 4560 LUMENS	12.02" L x 4.61" H x 5.71" D	WALL MTD COMPACT ARCHITECTURAL DIE CAST ALUMINUM EXTERIOR LED LIGHT W/IESNA TYPE III DISTRIBUTION AND BUTTON PHOTOCELL CONTROL. UL LISTED FOR WET LOCATIONS. FINISH: BRONZE
X1	KENNAL	#VILLCG	3W / 6000K / 150 LUMENS	11-13/16" L x 9-9/16" H x 1-13/16" D	UNIVERSAL MTD THERMOPLASTIC COMBINATION EXIT SIGN/EMERGENCY LIGHT W/RED LETTERS, ADJUSTABLE LED LAMP HEADS AND NICKEL CADMIUM BATTERY RATED TO OPERATE FIXTURE FOR 90 MINS UPON LOSS OF NORMAL POWER. PROVIDE DIRECTIONAL ARROWS AS INDICATED ON DRAWINGS. UL LISTED FOR DAMP LOCATIONS. FINISH: WHITE

PANEL P1 120/208 3PH 4W 225 AMP MLO-42K AIC NEMA TYPE 1 (RECESSED) Feed Thru Lugs															
CKT #	LOAD DESCRIPTION	AT	P	CA	DF	DA	VA	CKT #	LOAD DESCRIPTION	AT	P	CA	DF	DA	VA
1	INTERIOR LIGHTS	20	1	7	0.80	6	701	2	MAKE UP AIR UNIT	20	3	7	1.00	7	841
3	EXISTING MECHANICAL UNIT	20	3		1.00	0	0	6		20	1	2	1.00	2	240
5								10	EVH-1	20	1	11	1.00	11	1321
7								12	EVH-1	20	1	11	1.00	11	1321
9								13	EVH-1	20	1	15	1.00	15	1801
11	KITCHEN HOOD	20	3		1.00	0	0	14	EVH-1	20	1	15	1.00	15	1801
13								16	EVH-1	20	1	15	1.00	15	1801
15								18	EVH-1	20	1	15	1.00	15	1801
17	EUH-1	20	3	17	1.00	17	2042	20	EVH-1	20	1	15	1.00	15	1801
19								22	EVH-1	20	1	15	1.00	15	1801
21	WALK-IN COOLER CONDENSER	20	2		1.00	0	0	24	EVH-1	20	1	1	1.00	0	0
23								26	EVH-1	20	1	1	1.00	0	0
25	WALK-IN COOLER EVAPORATOR	20	2		1.00	0	0	28	EVH-1	20	1	1	1.00	0	0
27								30	EVH-1	20	1	1	1.00	0	0
29	WALK-IN COOLER	20	1	15	1.00	15	1801	32	EVH-1	20	1	1	1.00	0	0
31	FIRE ALARM CONTROL PANEL	20	1	5	1.00	5	600	34	EVH-1	20	1	1	1.00	0	0
33	FIRE PROTECTION SYSTEM	20	1	5	1.00	5	600	36	EVH-1	20	1	1	1.00	0	0
35	SPARE						0	38	EVH-1	20	1	1	1.00	0	0
37	SPARE						0	40	EVH-1	20	1	1	1.00	0	0
39	SPARE						0	42	PANEL P2	70	3	7	1.00	7	841
41	SPARE						0								841

LOCATION OF PANEL: STORAGE 103
Panel Voltage: 208
Total KVA: 26.890
Total Amps/PH: 74.53
Min. Panel Size (Demand x 1.25) - Amps: 93.16

AT - Amp Trip
P - Poles
A - Amps
CA - Connected Amperes
DF - Demand Factor (1 - 1)
DA - Demand Amperes
DW - Demand Watts
MLO - Main Lug Only
MCB - Main Circuit Breaker

PANEL P2 120/208 3PH 4W 100 AMP MCB 42K AIC NEMA TYPE 1 (SURFACE) Feed Thru Lugs															
CKT #	LOAD DESCRIPTION	AT	P	CA	DF	DA	VA	CKT #	LOAD DESCRIPTION	AT	P	CA	DF	DA	VA
1	FRYER	20	1	3	1.00	3	360	2	HEAT LAMP	20	1	1	1.00	1	156
3	FRYER	20	1	3	1.00	3	360	4	COOK AND HOLD OVEN	20	1	7	1.00	7	805
5	REFRIGERATED EQUIPMENT STAND	20	1	3	1.00	3	360	6	SANDWICH/SALAD PREP REFRIGERATOR	20	1	15	1.00	15	1801
7	ICE CUBER	20	1	12	1.00	12	1405	8	DRINKBAR MIXER	20	1	2	1.00	2	187
9	BEER COOLER	20	1	10	1.00	10	1201	10	INDUCTION FOOD WARMERS	20	1	4	1.00	4	504
11	SOON DISPENSER	20	1	10	1.00	10	1201	12	ICE CREAM DIPPING CABINET	20	1	6	1.00	6	685
13	CASH REGISTERS	20	1	5	1.00	5	600	14	RECEPTACLES	20	1	7	1.00	7	801
15	RECEPTACLES	20	1	7	1.00	7	801	16	RECEPTACLES	20	1	8	1.00	8	1001
17	RECEPTACLES	20	1	8	1.00	8	1001	18	RECEPTACLES	20	1	12	1.00	12	1401
19	SPARE						0	20	SPARE						0
21	SPARE						0	22	SPARE						0
23	SPARE						0	24	SPARE						0
25	SPARE						0	26	SPARE						0
27	SPARE						0	28	SPARE						0
29	SPARE						0	30	SPARE						0

LOCATION OF PANEL: STORAGE 103
Panel Voltage: 208
Total KVA: 14.630
Total Amps/PH: 40.61
Min. Panel Size (Demand x 1.25) - Amps: 50.76

AT - Amp Trip
P - Poles
A - Amps
CA - Connected Amperes
DF - Demand Factor (1 - 1)
DA - Demand Amperes
DW - Demand Watts
MLO - Main Lug Only
MCB - Main Circuit Breaker

REV. NO.	DATE	COMMENTS

PROJECT
Bob's Clam Hut
109 Cumberland Avenue
Portland, Maine

TITLE
LIGHTING PLAN

DWG NO.
E-100.00

DESIGNER SIGNATURE: STEVEN J. MONAGHAN
PROFESSIONAL ENGINEER
LICENSED 48466
ISSUED: 29-DECEMBER-2017
REVISION: 13-FEBRUARY-2018

SCALE: 3/8" = 1'-0"
PAGE: - OF -

DESIGNER
PAUL BENNETT ARCHITECT PC
25 WEST 31ST STREET, NEW YORK, NEW YORK 10014
TEL (212) 209-1177

ISSUED FOR PERMIT