



**Bob's Clam Hut**  
109 Cumberland Avenue  
Portland, Maine

**OWNER**

Bob's Clam Hut  
315 U.S. Route 1  
Kittery, Maine  
Telephone: (207) 439-4233  
Contact: Michael Landgarten

**DESIGNER**

Paul Bennett Architect PC  
25 West 31st Street, Floor 7  
New York, New York, 10001  
Telephone: (212) 209-1177  
Contact: Lisa Wright

**ENGINEER**

Bennett Engineering, Inc.  
7 Bennett Road, P.O. Box 297  
Freeport, ME 04032  
Telephone: (207) 855-9475  
Contact: William Bennett

**KITCHEN CONSULTANT**

TriMark  
505 Collins Street  
South Amherst, MA 02703-8039  
Telephone: (508) 399-6000  
Contact: Ed Dresser

DOB REVISIONS:  
12-FEBRUARY-2018

02-February-2018 DOB REVISIONS

REV. NO.	DATE	COMMENTS

PROJECT

Bob's Clam Hut  
109 Cumberland Avenue  
Portland, Maine

TITLE

Interior Elevations

DWG. NO.

**A-203.00**

SCALE

3/8" = 1'-0"

ISSUED

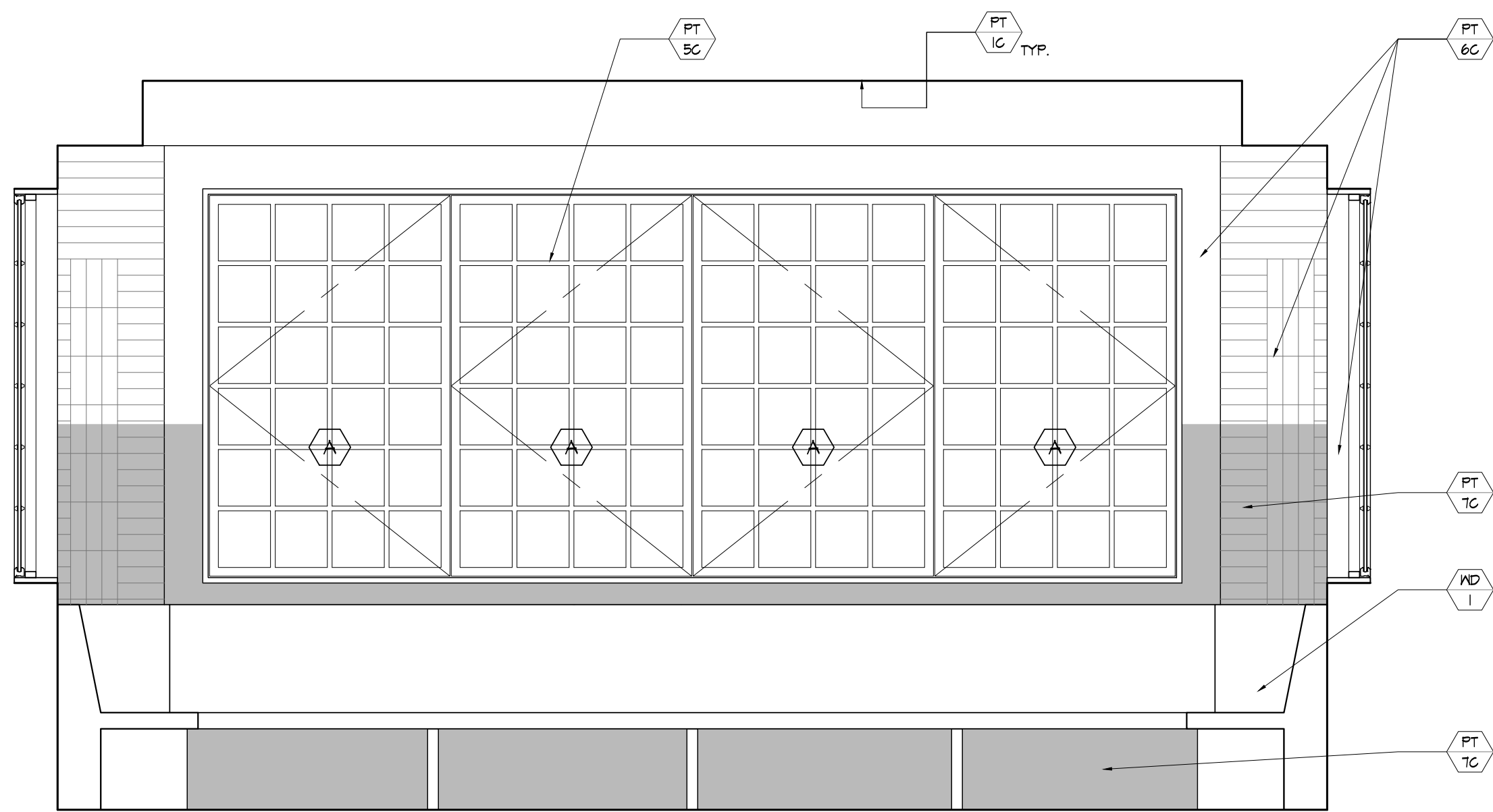
29-DECEMBER-2017

REVISION

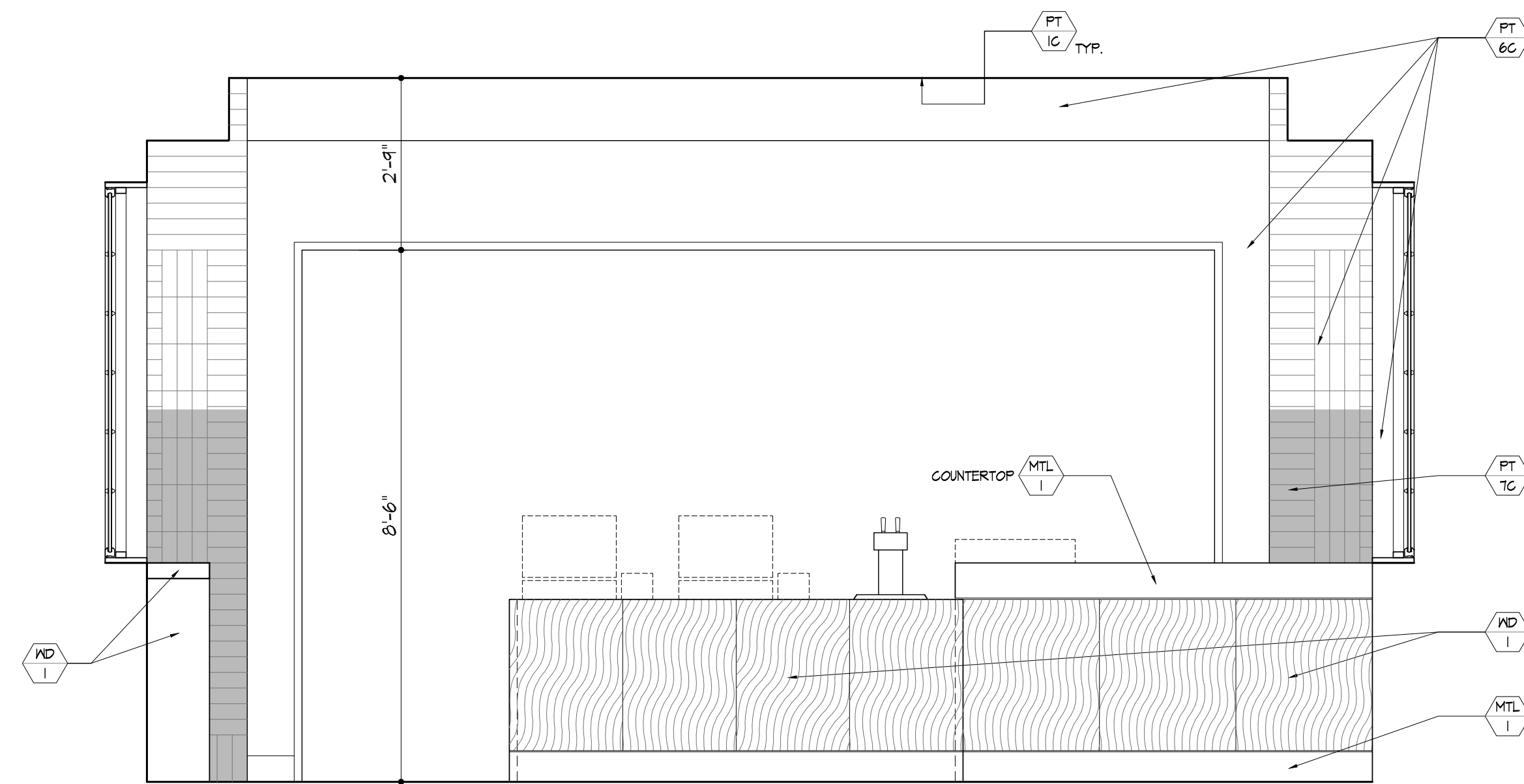
12-FEB.-2018

**DESIGNER**

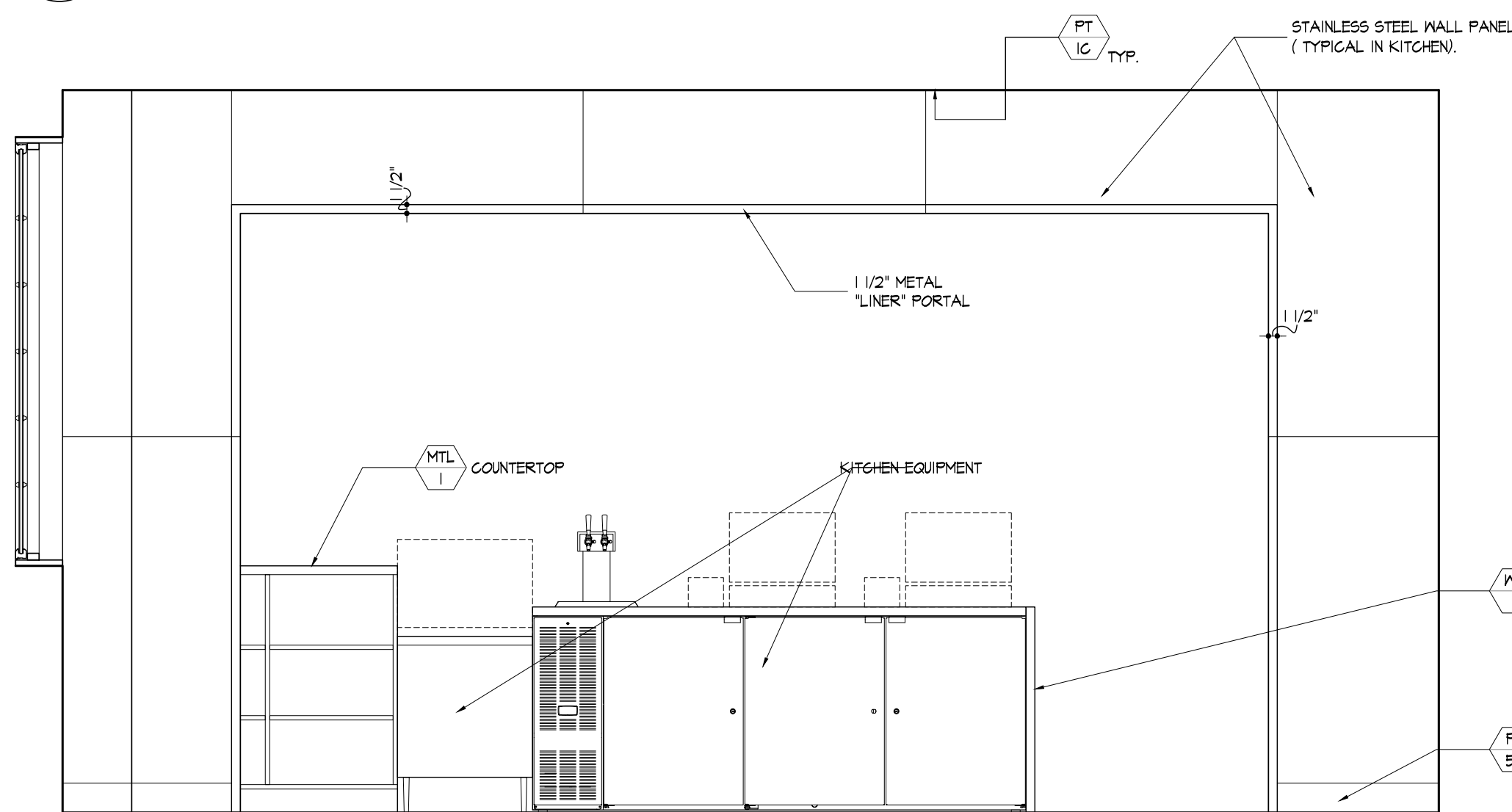
PAUL BENNETT ARCHITECT PC  
25 WEST 31ST STREET, NEW YORK, NEW YORK 10014  
TEL (212) 209-1177



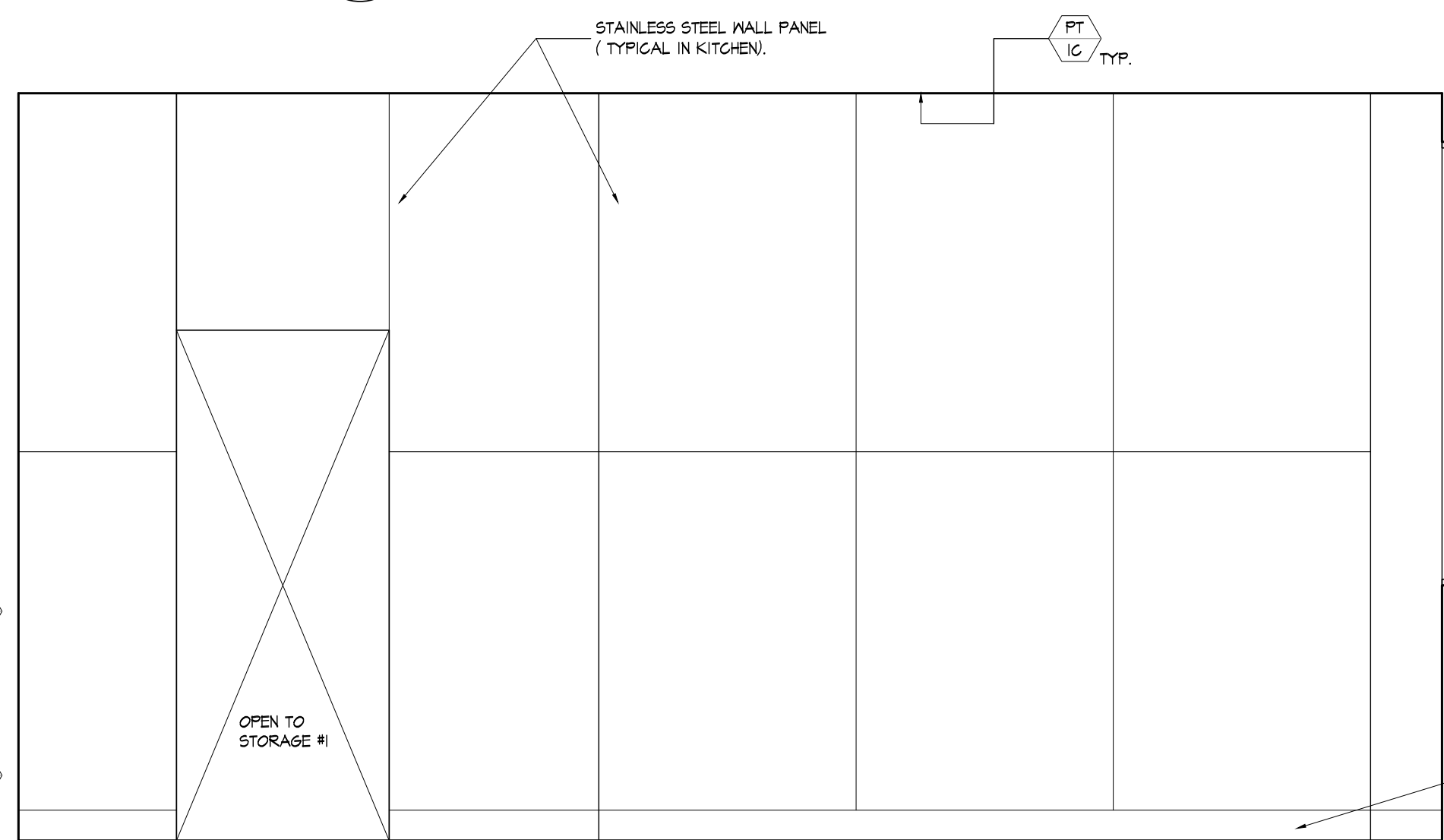
**1 Elevation: Interior**  
Scale: 1/2" = 1'-0"



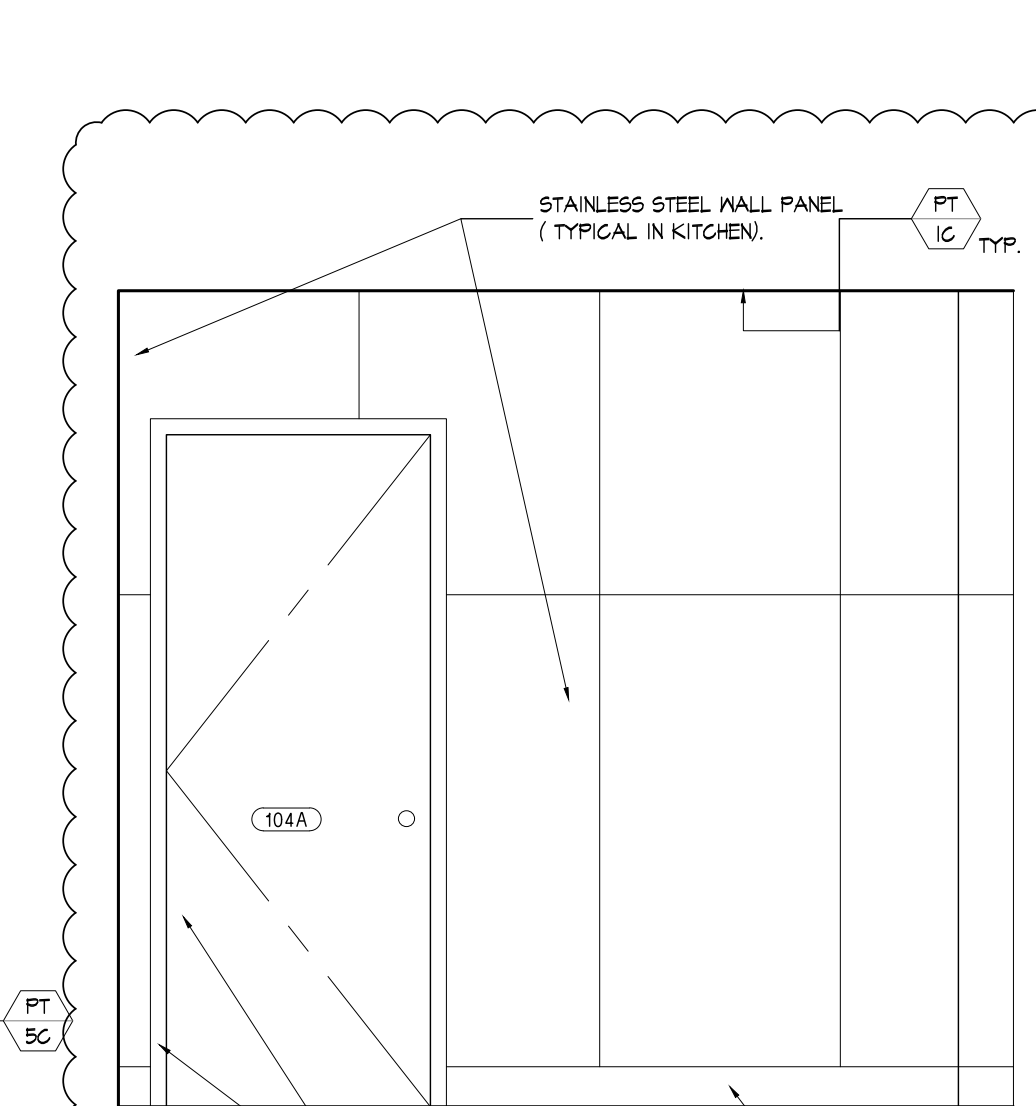
**2 Elevation: Interior**  
Scale: 1/2" = 1'-0"



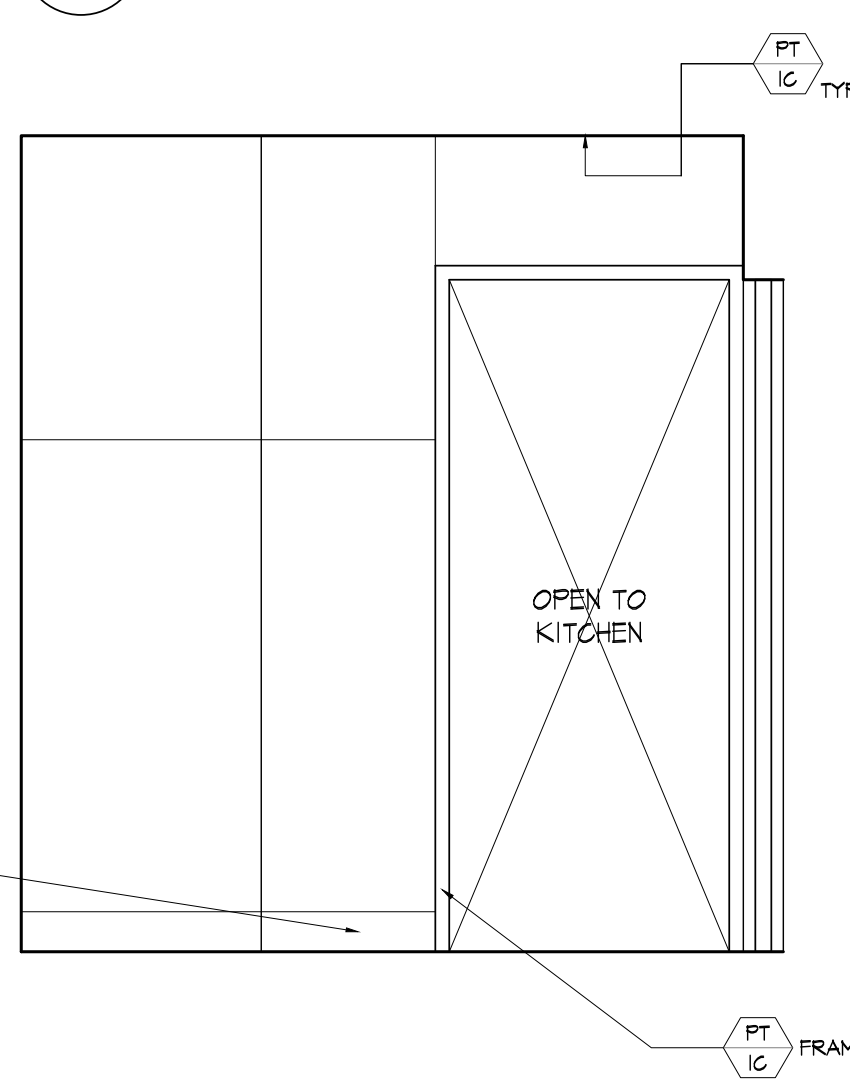
**3 Elevation: Interior**  
Scale: 1/2" = 1'-0"



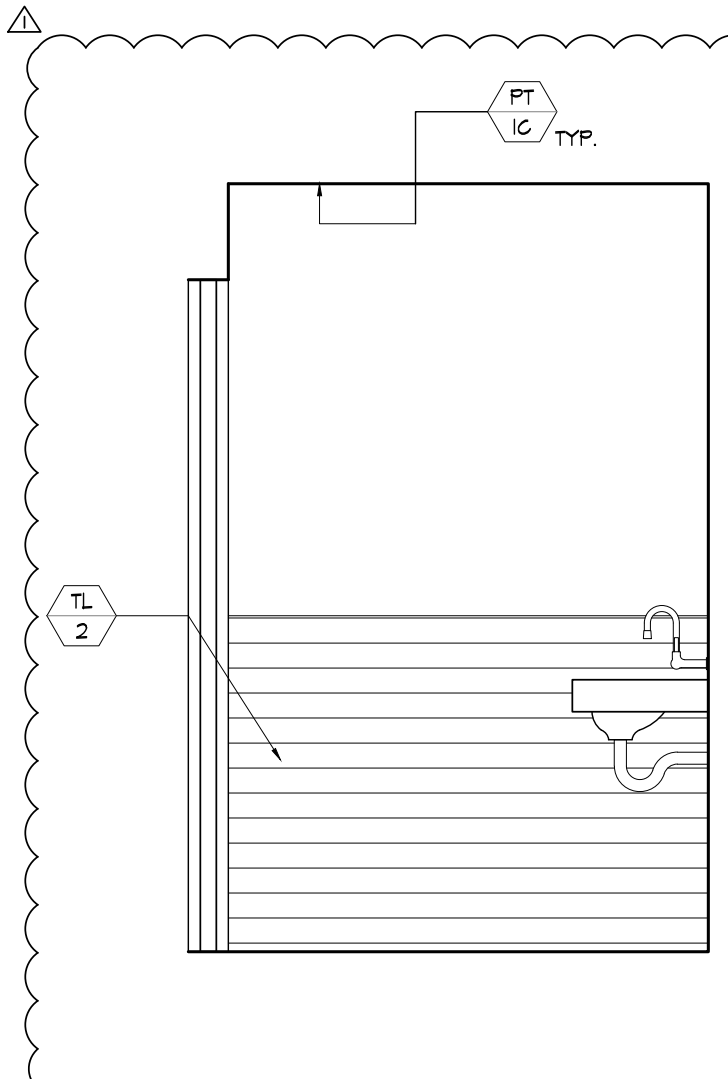
**4 Elevation: Interior**  
Scale: 1/2" = 1'-0"



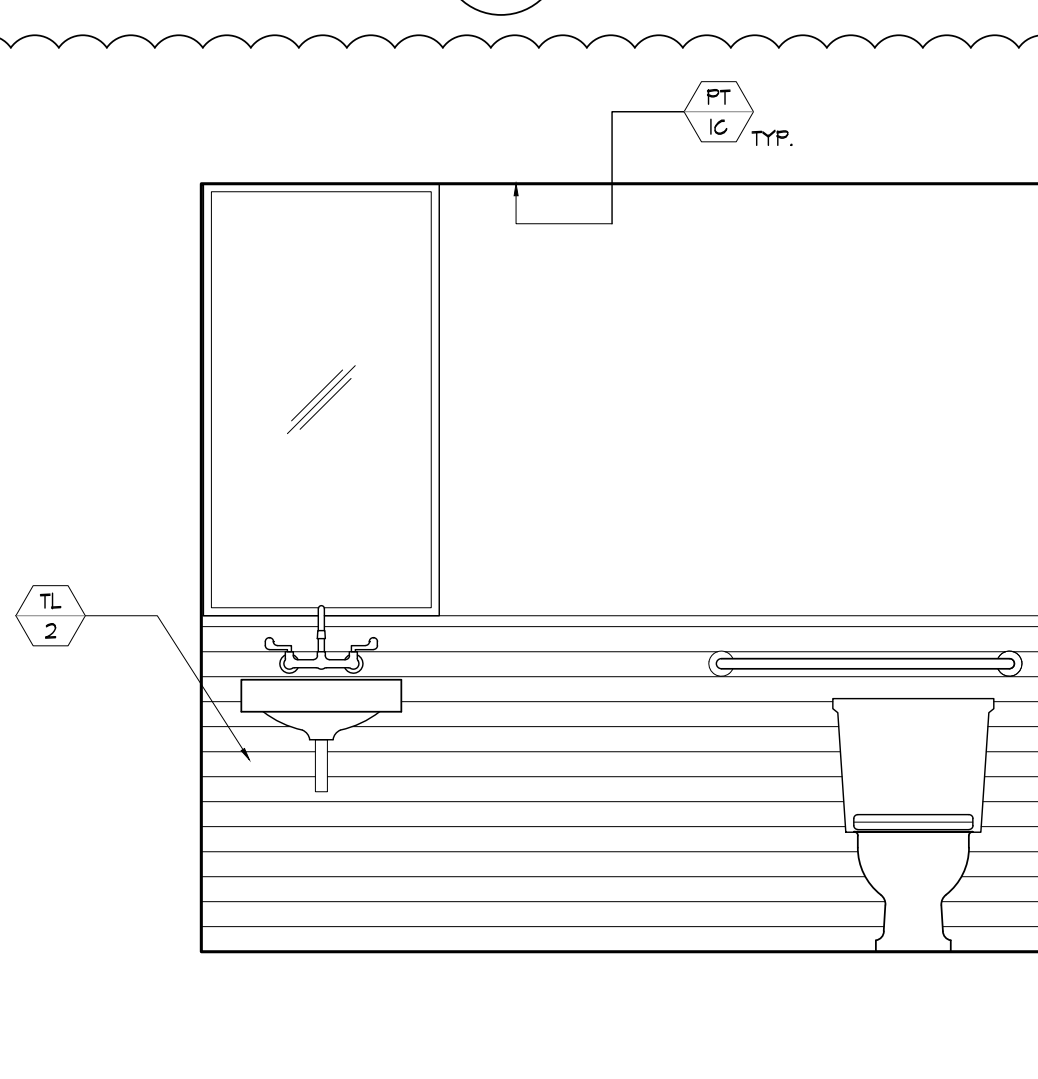
**5 Elevation: Interior**  
Scale: 1/2" = 1'-0"



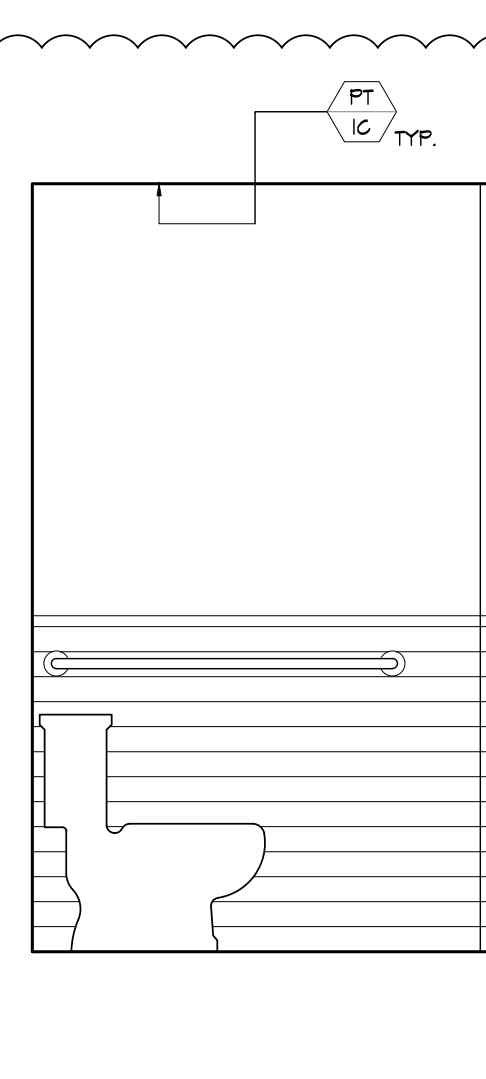
**6 Elevation: Interior**  
Scale: 1/2" = 1'-0"



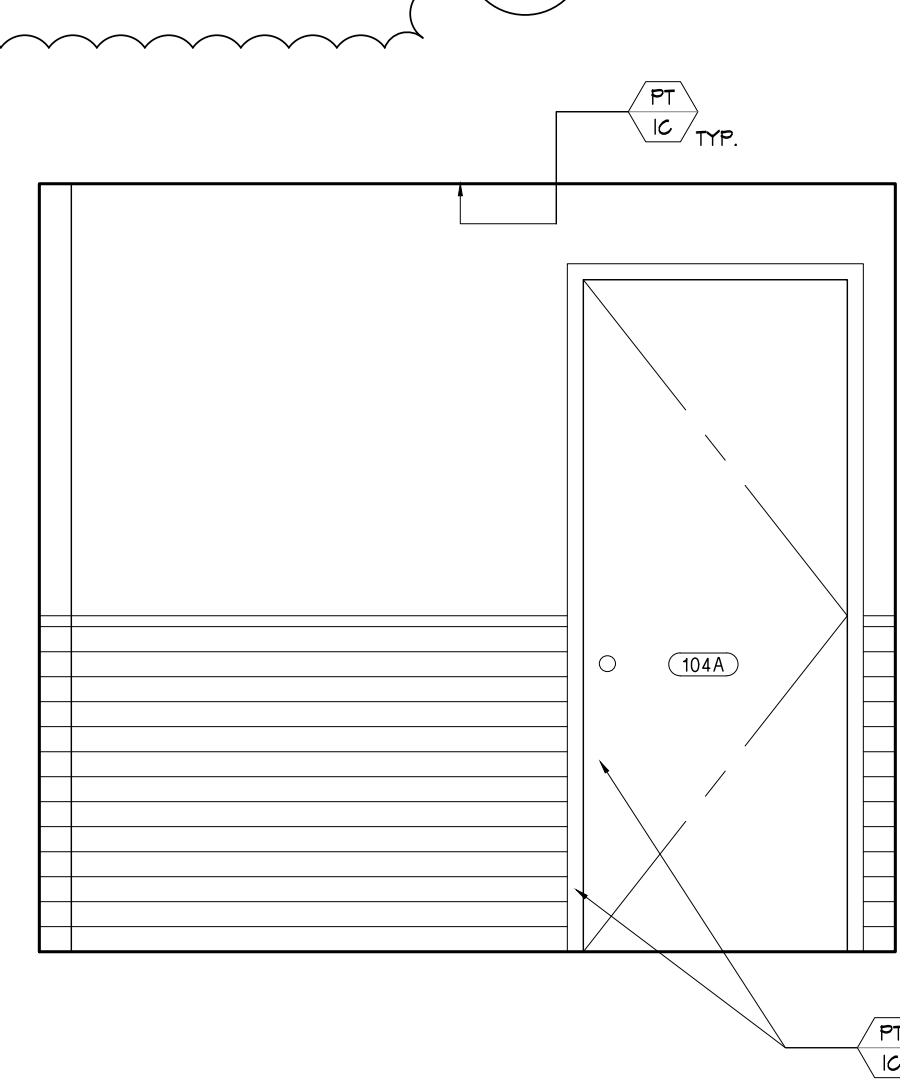
**7 Elevation: Interior**  
Scale: 1/2" = 1'-0"



**8 Elevation: Interior**  
Scale: 1/2" = 1'-0"



**9 Elevation: Interior**  
Scale: 1/2" = 1'-0"



**10 Elevation: Interior**  
Scale: 1/2" = 1'-0"

- ELEV. 11'-3" B.O. CEILING
- ELEV. 9'-7" T.O. WINDOW
- ELEV. 8'-6" B.O. KITCHEN CEILING
- ELEV. 7'-9" B.O. RESTROOM CEILING
- ELEV. 3'-6" B.O. WINDOW
- ELEV. 0'-0" F.O. FINISHED FLOOR
- ELEV. 10'-3" B.O. CEILING
- ELEV. 9'-7" T.O. WINDOW
- ELEV. 8'-6" B.O. KITCHEN CEILING
- ELEV. 7'-9" B.O. RESTROOM CEILING
- ELEV. 3'-6" B.O. WINDOW
- ELEV. 0'-0" F.O. FINISHED FLOOR
- ELEV. 8'-6" B.O. KITCHEN CEILING
- ELEV. 7'-9" B.O. RESTROOM CEILING
- ELEV. 3'-6" B.O. WINDOW
- ELEV. 0'-0" F.O. FINISHED FLOOR