



**Bob's Clam Hut**  
109 Cumberland Avenue  
Portland, Maine

**OWNER**

Bob's Clam Hut  
315 U.S. Route 1  
Kilby, Maine  
Telephone: (207) 439-4233  
Contact: Michael Landgarten

**DESIGNER**

Paul Bennett Architect PC  
25 West 31st Street, Floor 7  
New York, New York 10001  
Telephone: (212) 209-1177  
Contact: Lisa Wright

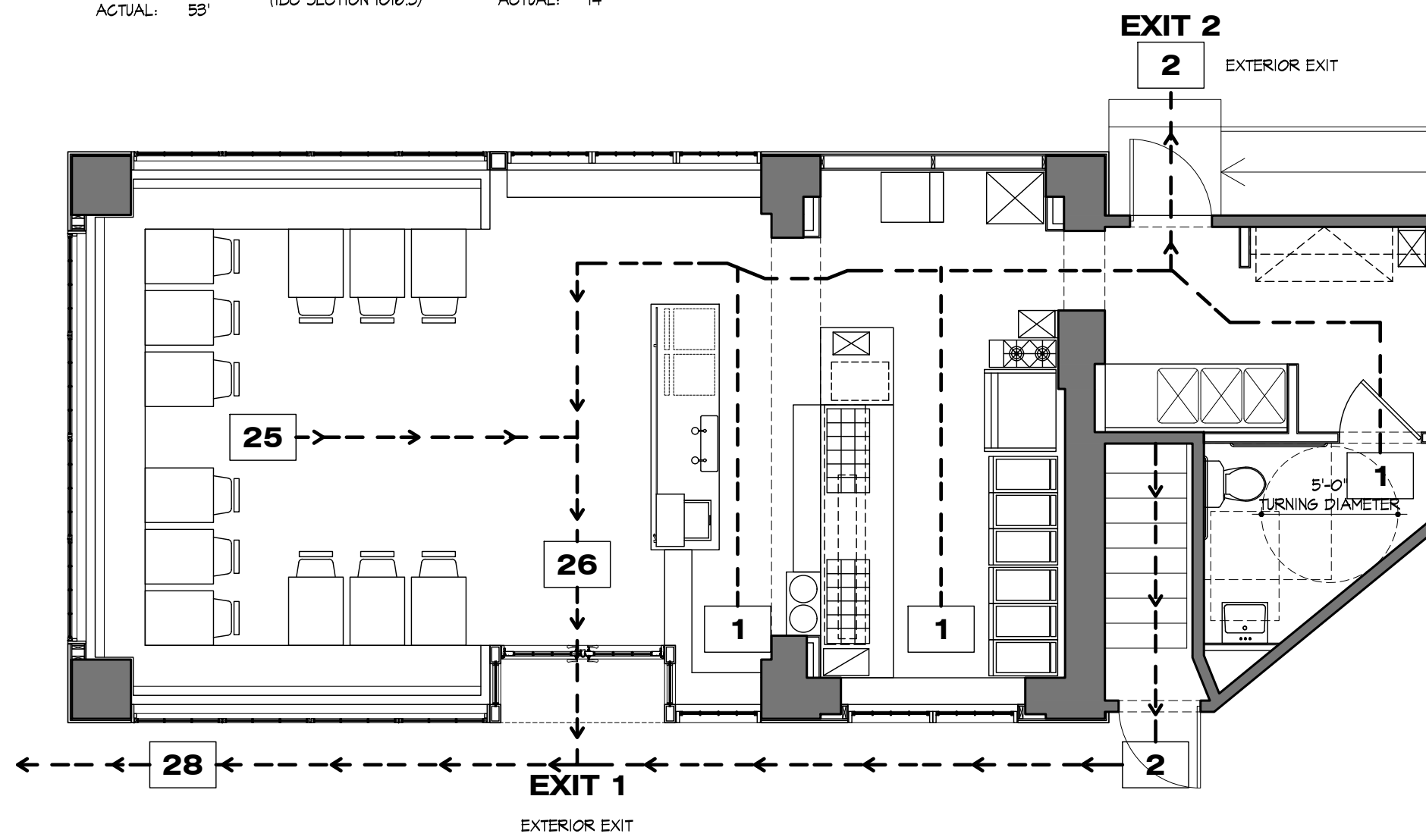
**ENGINEER**

Bennett Engineering, Inc.  
7 Bennett Road, P.O. Box 297  
Freeport, ME 04032  
Telephone: (207) 865-9475  
Contact: William Bennett

**KITCHEN CONSULTANT**

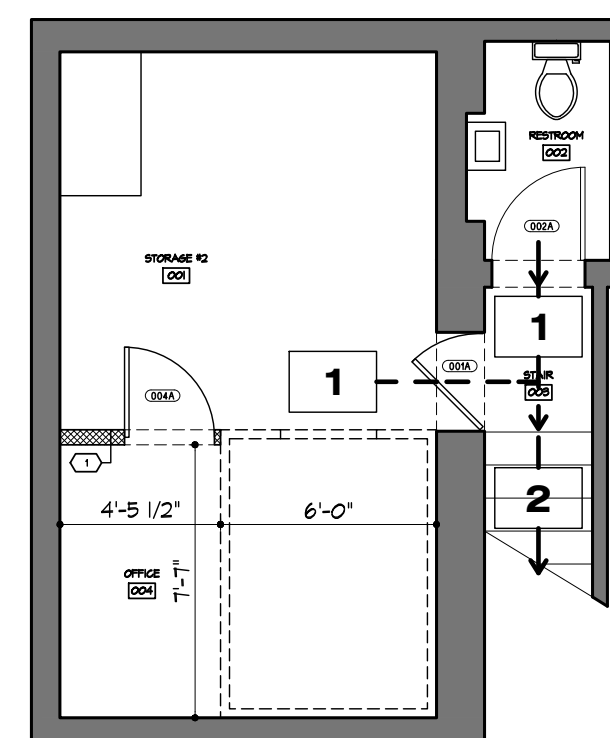
TriMark  
505 Collins Street  
South Westboro, MA 02703-8039  
Telephone: (508) 399-6000  
Contact: Ed Dresser

# OF EXITS:  
(IBC TABLE 1015.1)  
REQUIRED : 1  
ACTUAL : 2  
COMMON PATH OF TRAVEL:  
(IBC SECTION 1015.3)  
MAX. ACTUAL: 75'  
59'  
EXIT ACCESS TRAVEL DIST:  
(IBC TABLE 1024.1)  
MAX. ACTUAL: 100'  
59'

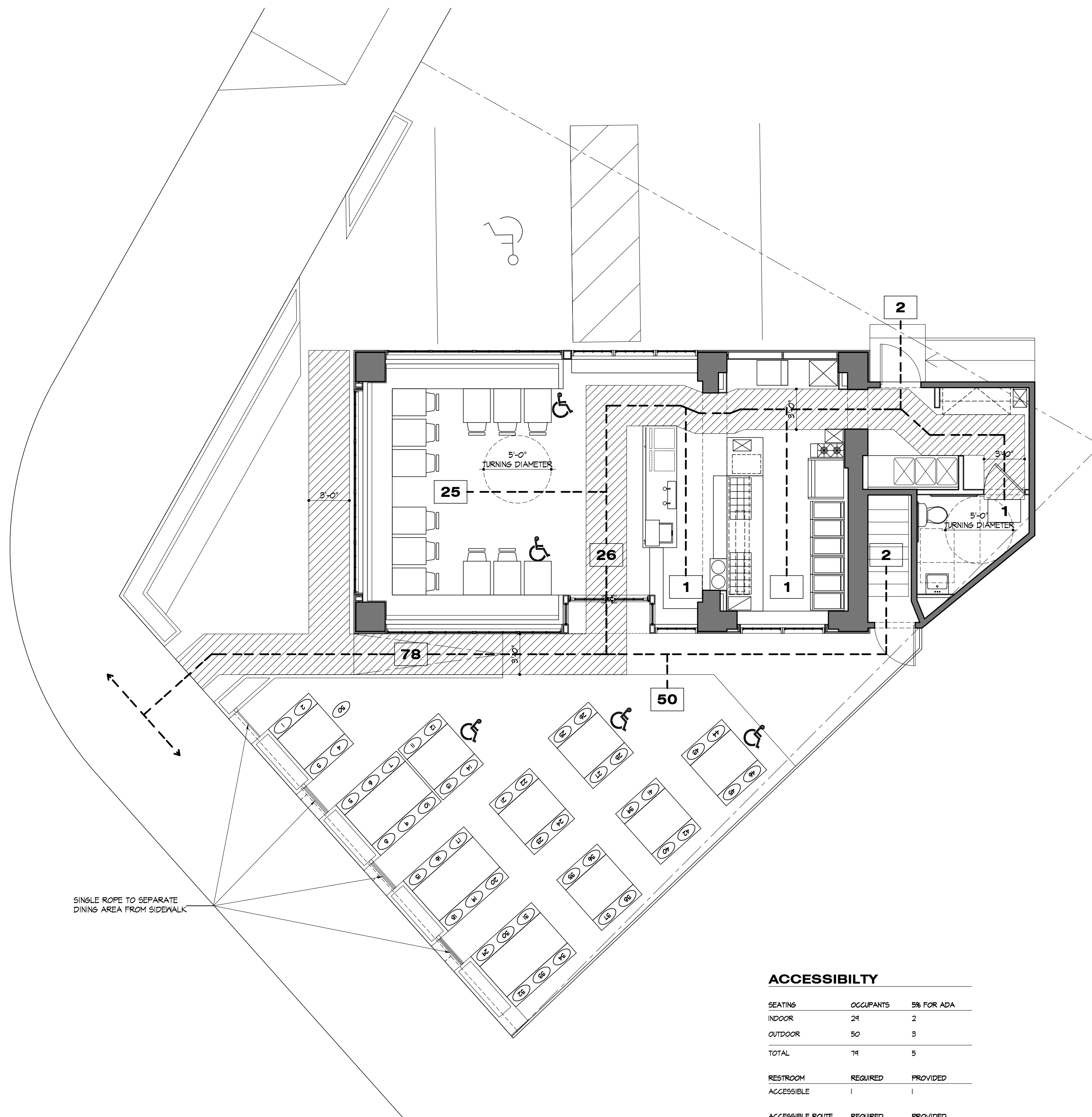


**1 Life Safety Plan: Ground Floor**  
Scale: 3/16" = 1'-0"

# OF EXITS:  
(IBC TABLE 1015.1)  
REQUIRED : 1  
ACTUAL : 2  
COMMON PATH OF TRAVEL:  
(IBC SECTION 1015.3)  
MAX. ACTUAL: 75'  
59'  
EXIT ACCESS TRAVEL DIST:  
(IBC TABLE 1024.1)  
MAX. ACTUAL: 100'  
10'



**2 Life Safety Plan: Cellar**  
Scale: 3/16" = 1'-0"



**3 Accessible Path of Travel Plan**  
Scale: 3/16" = 1'-0"

**ACCESSIBILITY**

SEATING	OCCUPANTS	% FOR ADA
INDOOR	24	2
OUTDOOR	50	3
TOTAL	74	5

RESTROOM	REQUIRED	PROVIDED
ACCESSIBLE	1	1

ACCESSIBLE ROUTE	REQUIRED	PROVIDED
ROUTE WIDTH	36"	56"

REV. NO. DATE COMMENTS

PROJECT

Bob's Clam Hut  
109 Cumberland Avenue  
Portland, Maine

TITLE

Life Safety Plan &  
Accessibility Plan

DWG NO.

**G-103.00**

SEAL & SIGNATURE

PAGE 4 OF 15

SCALE 3/16" = 1'-0"

ISSUED 29-DECEMBER-2017

REVISION

DESIGNER

**PAUL BENNETT ARCHITECT PC**  
25 WEST 31ST STREET, NEW YORK, NEW YORK 10001  
TEL (212) 209-1177