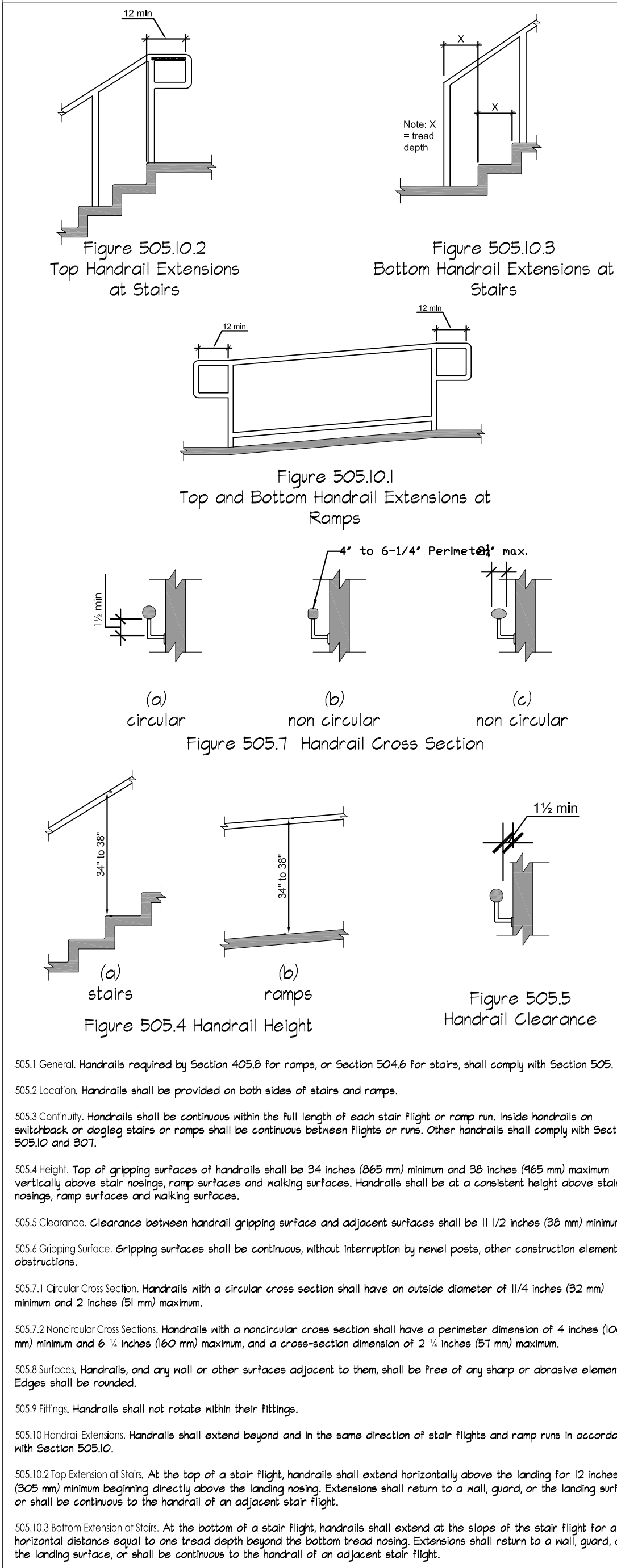
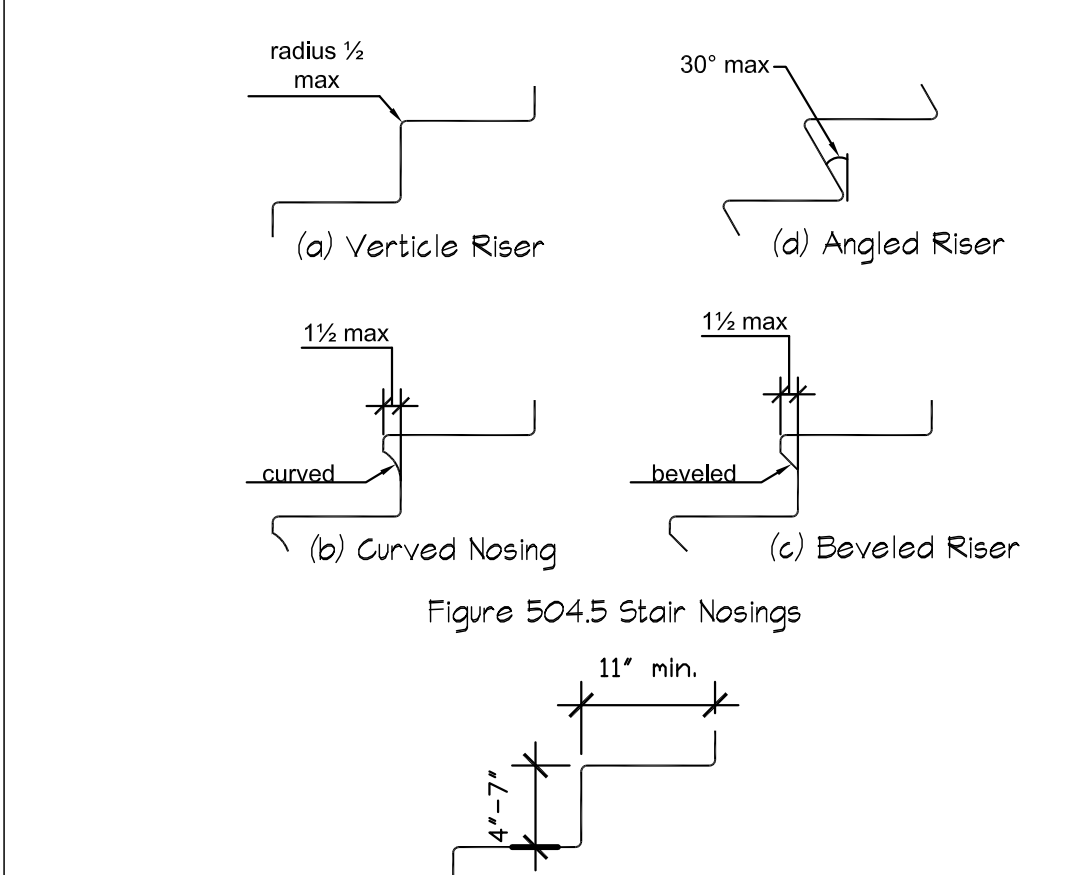


**Required Minimum Dims. As Per ANSI 117.1-2009:**



**505 Handrails**



504.2 Treads and Risers: All steps on a flight of stairs shall have uniform riser height and uniform tread depth. Risers shall be 4 inches (102 mm) minimum and 7 inches (180 mm) maximum in height. Treads shall be 11 inches (280 mm) minimum in depth.

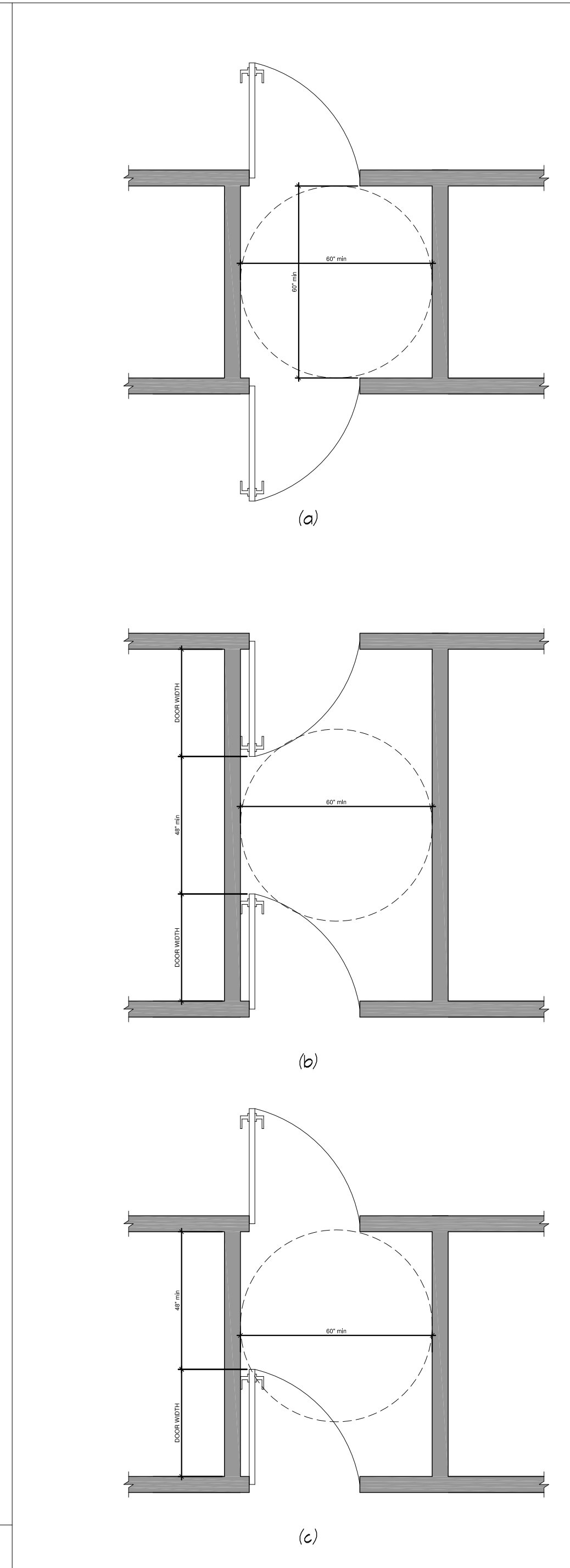
504.3 Open Risers: Open risers shall not be permitted.

504.4 Tread Surface: Stair treads shall comply with Section 302 and shall have a slope not steeper than 1:48.

504.5 Nosings: The radius of curvature at the leading edge of the tread shall be 1/2 inch (13 mm) maximum. Nosings that project beyond risers shall have the underside of the leading edge curved or beveled. Risers shall be permitted to slope under the tread at an angle of 30 degrees maximum from vertical. The permitted projection of the nosing shall be 1/2 inch (13 mm) maximum over the tread or floor below.

504.6 Visual Contrast: The leading 2 inches (51 mm) of the tread shall have visual contrast of dark-on-light or light-on-dark from the remainder of the tread.

**504 Stairways**



**Table 404.2.3.2 -- Maneuvering Clearances at Manual Swinging Doors**

TYPE OF USE	MINIMUM CLEARANCES	
Approach Direction	Door Side	Beyond Latch Parallel to Door
From Front	Pull	18"
From Front	Push	0" (B)
From Hinge	Pull	36"
From Hinge	Push	42"
From Latch	Pull	24"
From Latch	Push	24"

NOTES:  
 (1) Add 6" if closer and latch provided.  
 (2) Add 6" if closer provided.  
 (3) Add 12" beyond latch if closer and latch provided.  
 (4) Beyond hinge side.

404.2 Manual Doors: Manual doors and doorways, and manual gates, including ticket gates, shall comply with Section 404.2. EXCEPTION: Doors, doorways, and gates designed to be operated only by security personnel shall not be required to comply with Sections 404.2.6, 404.2.1, and 404.2.8.

404.2.1 Double-Leaf Doors and Gates: At least one of the active leaves of doorways with two leaves shall comply with Sections 404.2.2 and 404.2.3.

404.2.2 Clear Width: Doorways shall have a clear opening width of 32 inches (813 mm) minimum. Clear opening width of doorways with swinging doors shall be measured between the face of door and stop, with the door open 90 degrees. Openings more than 24 inches (610 mm) in depth at doors and doorways without doors shall provide a clear opening width of 36 inches (915 mm) minimum. There shall be no projections into the clear opening width between 34 inches (865 mm) and 80 inches (2032 mm) above the floor shall not exceed 4 inches (100 mm).

EXCEPTIONS:  
 1. Door closers and door stops shall be permitted to be 18 inches (457 mm) minimum above the floor.  
 2. In alterations, a projection of 5/8 inch (16 mm) maximum into the required clear opening width shall be permitted for the latch side stop.

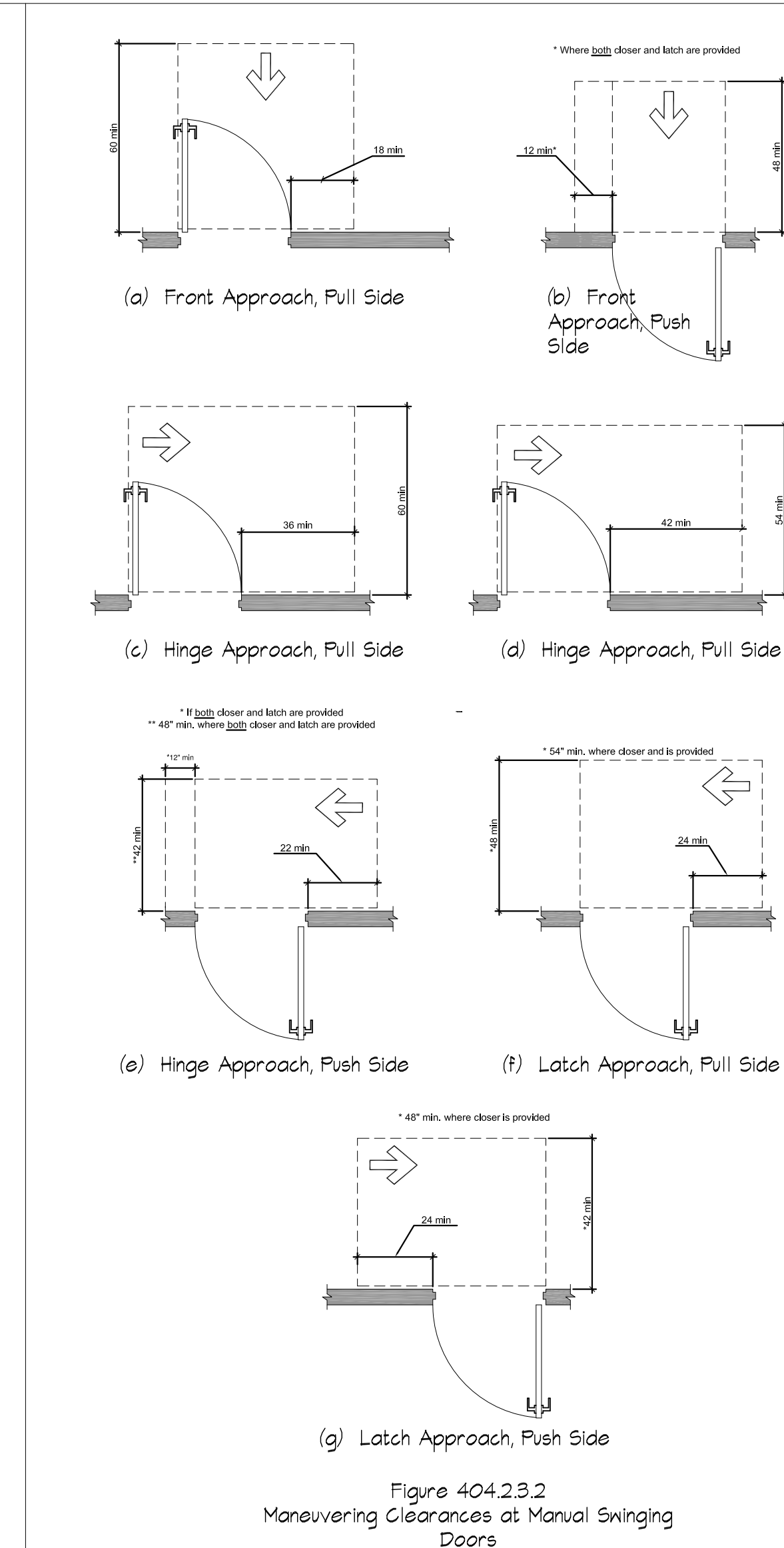
404.2.3 Maneuvering Clearances: Minimum maneuvering clearances at doors shall comply with Section 404.2.3 and shall include the full clear opening width of the doorway. Required door maneuvering clearances shall not include knee and toe clearance.

404.2.4 Thresholds: If provided, thresholds at doorways shall be 1/2 inch (13 mm) maximum in height. Raised thresholds and changes in level at doorways shall comply with Sections 302 and 303.

404.2.5 Two Doors in Series: Distance between two hinged or pivoted doors in series shall be 48 inches (1220 mm) minimum plus the width of any door swinging into the space. The space between the doors shall provide a turning space complying with Section 304, Chapter 4, Accessible Routes.

404.2.6 Door Hardware: Handles, pulls, latches, locks, and other operable parts on accessible doors shall have a shape that is easy to grasp with one hand and does not require tight grasping, pinching, or twisting of the wrist to operate. Operable parts of such hardware shall be 34 inches (865 mm) minimum and 48 inches (1220 mm) maximum above the floor. Where sliding doors are in the fully open position, operating hardware shall be exposed and usable from both sides. EXCEPTION: Locks used only for security purposes and not used for normal operation shall not be required to comply with Section 404.2.6.

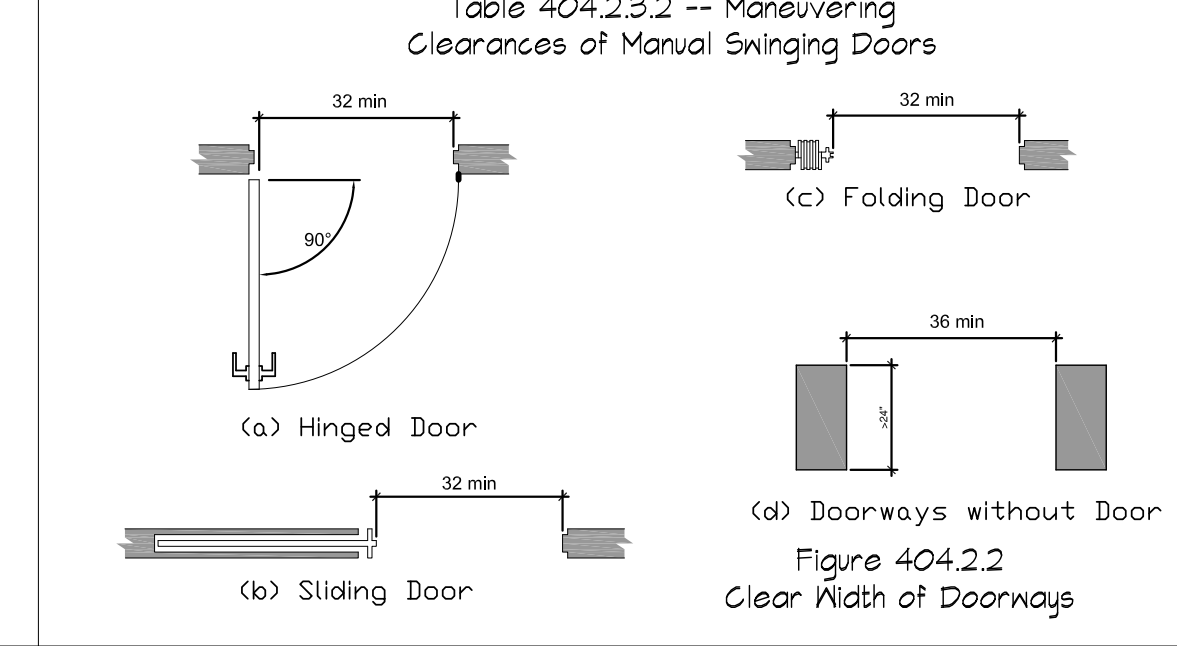
**404 Doors and Doorways**



**Table 404.2.3.2 -- Maneuvering Clearances at Manual Swinging Doors**

TYPE OF USE	MINIMUM CLEARANCES	
Approach Direction	Door Side	Beyond Latch Parallel to Door
From Front	Pull	18"
From Front	Push	0" (B)
From Hinge	Pull	36"
From Hinge	Push	42"
From Latch	Pull	24"
From Latch	Push	24"

NOTES:  
 (1) Add 6" if closer and latch provided.  
 (2) Add 6" if closer provided.  
 (3) Add 12" beyond latch if closer and latch provided.  
 (4) Beyond hinge side.



404.2.2 Clear Width: Doorways shall have a clear opening width of 32 inches (813 mm) minimum. Clear opening width of doorways with swinging doors shall be measured between the face of door and stop, with the door open 90 degrees. Openings more than 24 inches (610 mm) in depth at doors and doorways without doors shall provide a clear opening width of 36 inches (915 mm) minimum. There shall be no projections into the clear opening width between 34 inches (865 mm) and 80 inches (2032 mm) above the floor shall not exceed 4 inches (100 mm).

EXCEPTIONS:  
 1. Door closers and door stops shall be permitted to be 18 inches (457 mm) minimum above the floor.  
 2. In alterations, a projection of 5/8 inch (16 mm) maximum into the required clear opening width shall be permitted for the latch side stop.

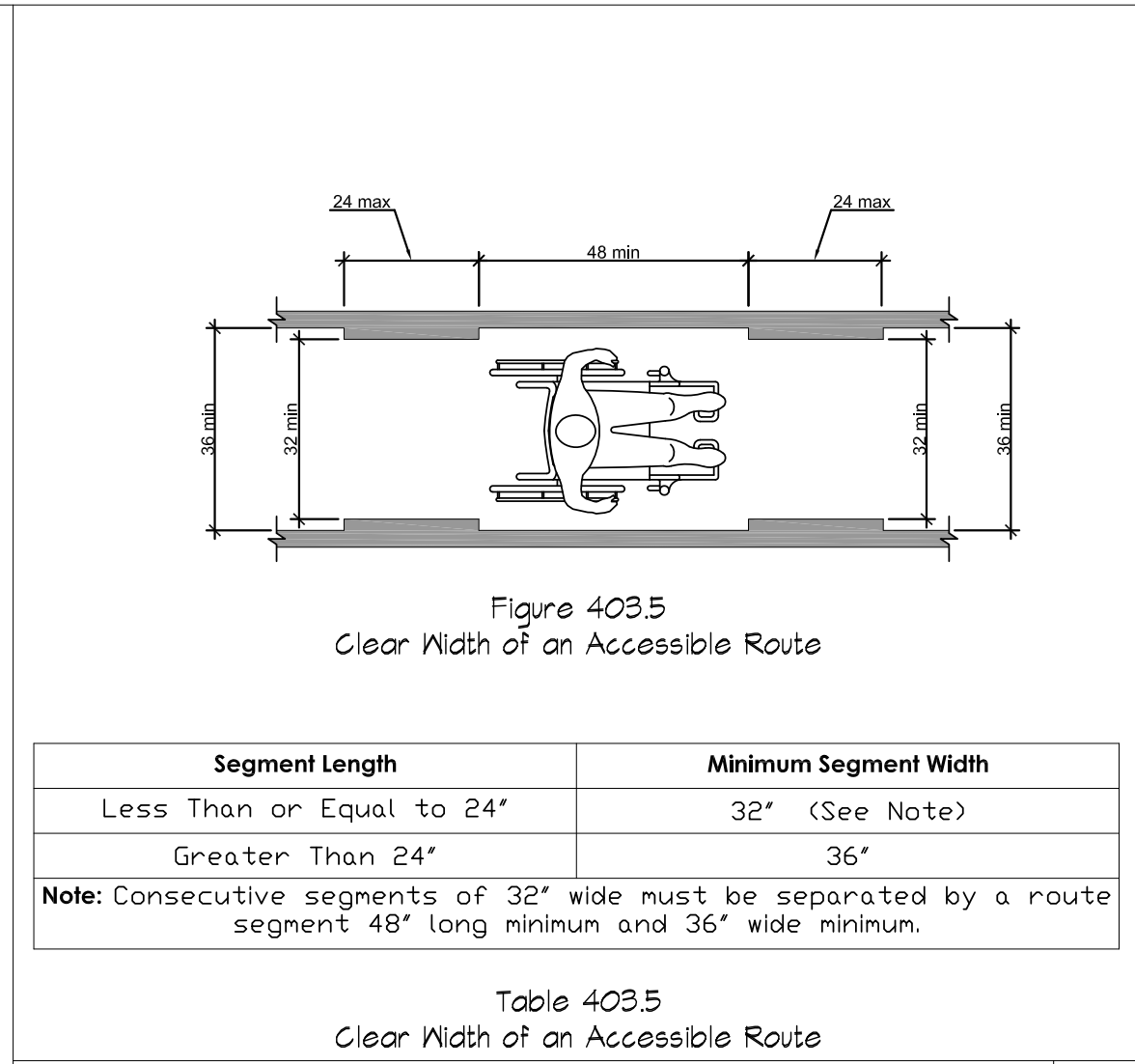
404.2.3 Maneuvering Clearances: Minimum maneuvering clearances at doors shall comply with Section 404.2.3 and shall include the full clear opening width of the doorway. Required door maneuvering clearances shall not include knee and toe clearance.

404.2.4 Thresholds: If provided, thresholds at doorways shall be 1/2 inch (13 mm) maximum in height. Raised thresholds and changes in level at doorways shall comply with Sections 302 and 303.

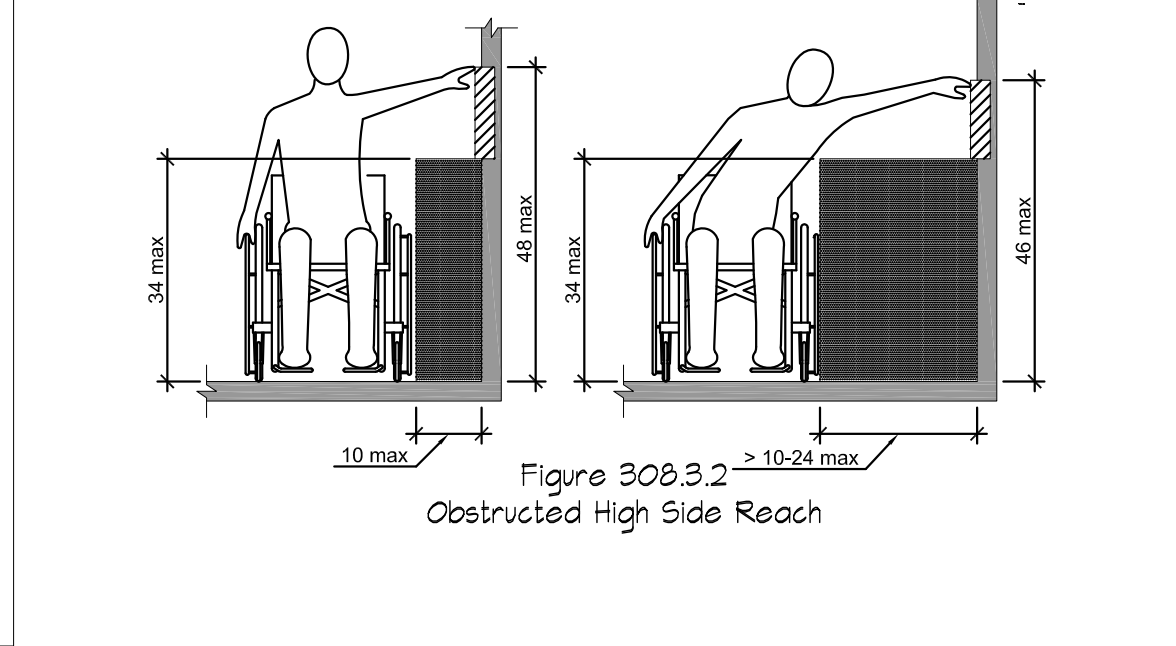
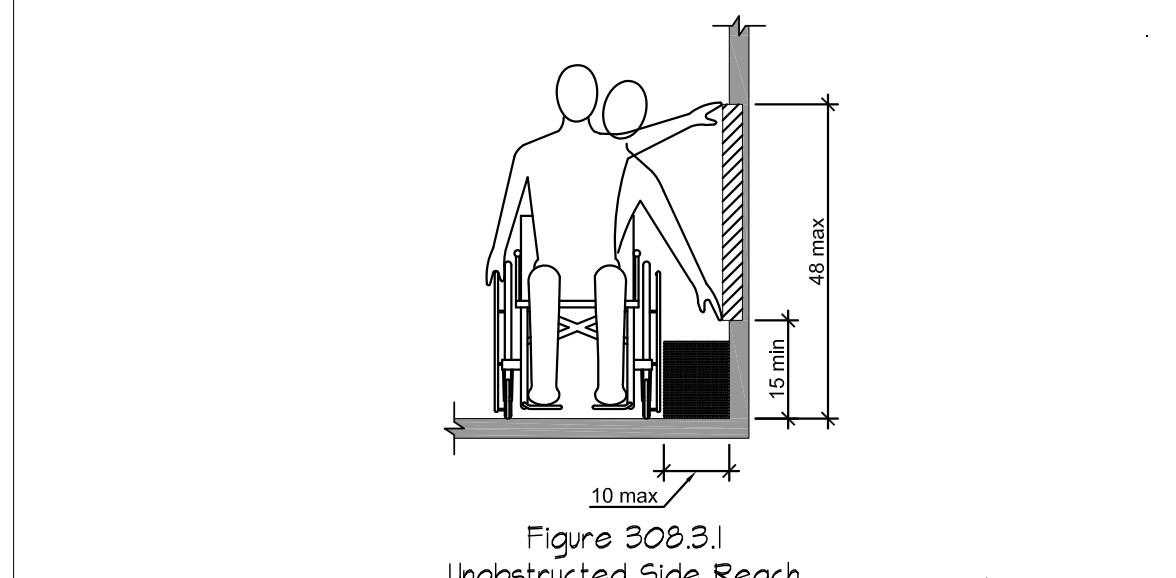
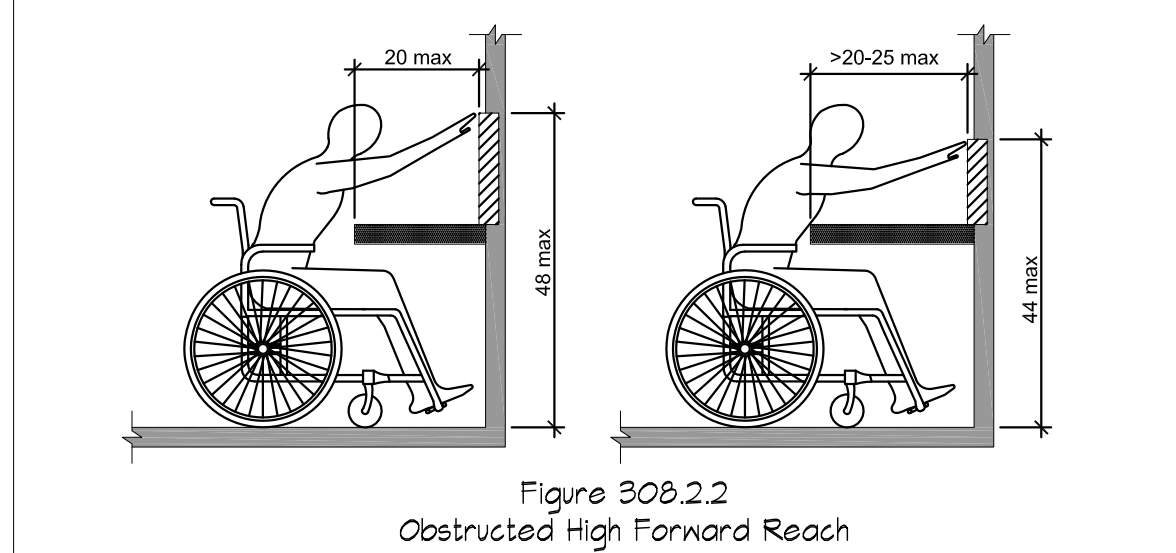
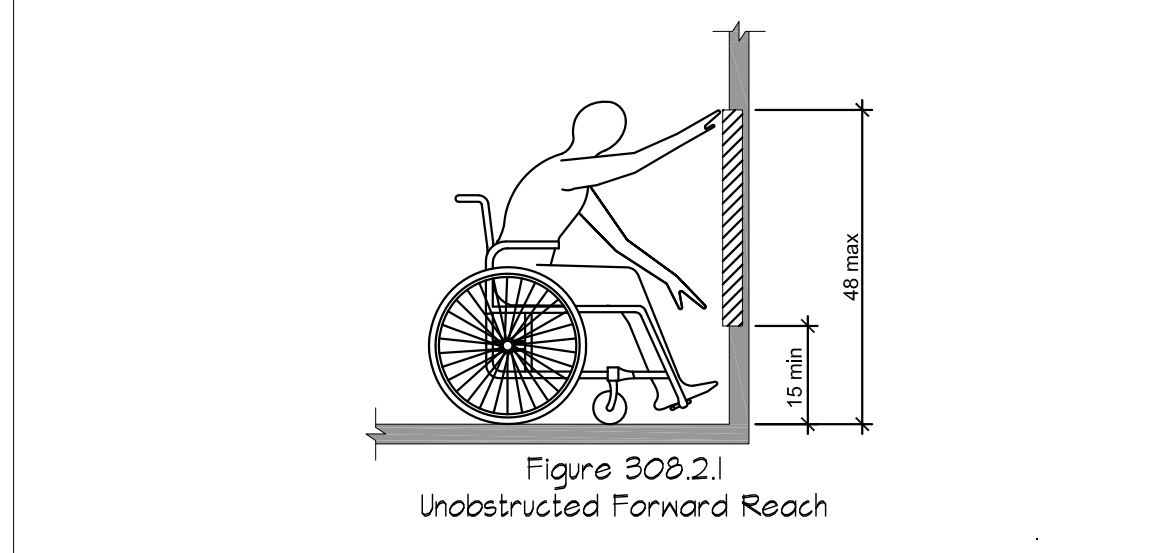
404.2.5 Two Doors in Series: Distance between two hinged or pivoted doors in series shall be 48 inches (1220 mm) minimum plus the width of any door swinging into the space. The space between the doors shall provide a turning space complying with Section 304, Chapter 4, Accessible Routes.

404.2.6 Door Hardware: Handles, pulls, latches, locks, and other operable parts on accessible doors shall have a shape that is easy to grasp with one hand and does not require tight grasping, pinching, or twisting of the wrist to operate. Operable parts of such hardware shall be 34 inches (865 mm) minimum and 48 inches (1220 mm) maximum above the floor. Where sliding doors are in the fully open position, operating hardware shall be exposed and usable from both sides. EXCEPTION: Locks used only for security purposes and not used for normal operation shall not be required to comply with Section 404.2.6.

**404 Doors and Doorways**



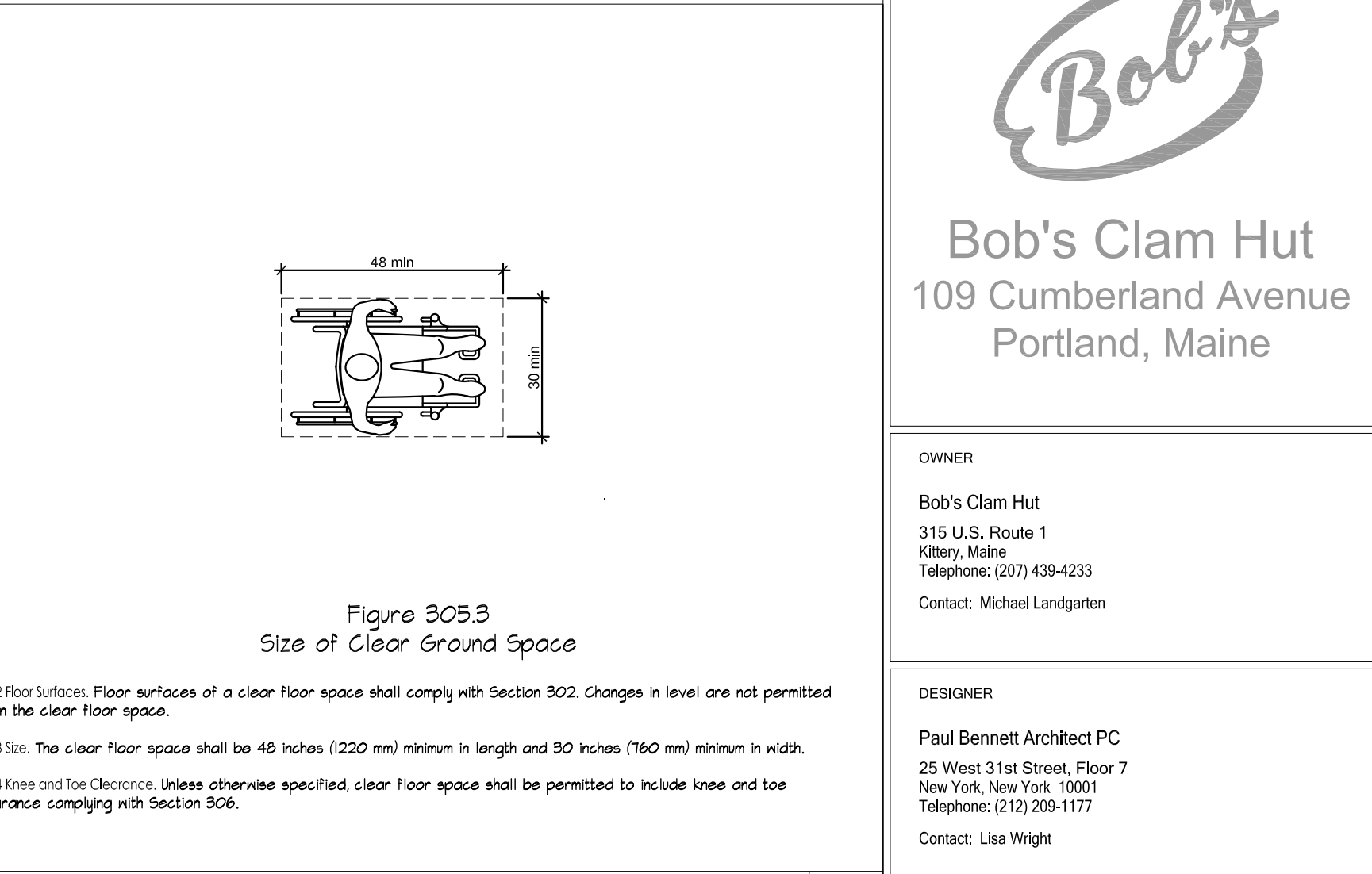
**403.5 Clear Width of an Accessible Route**



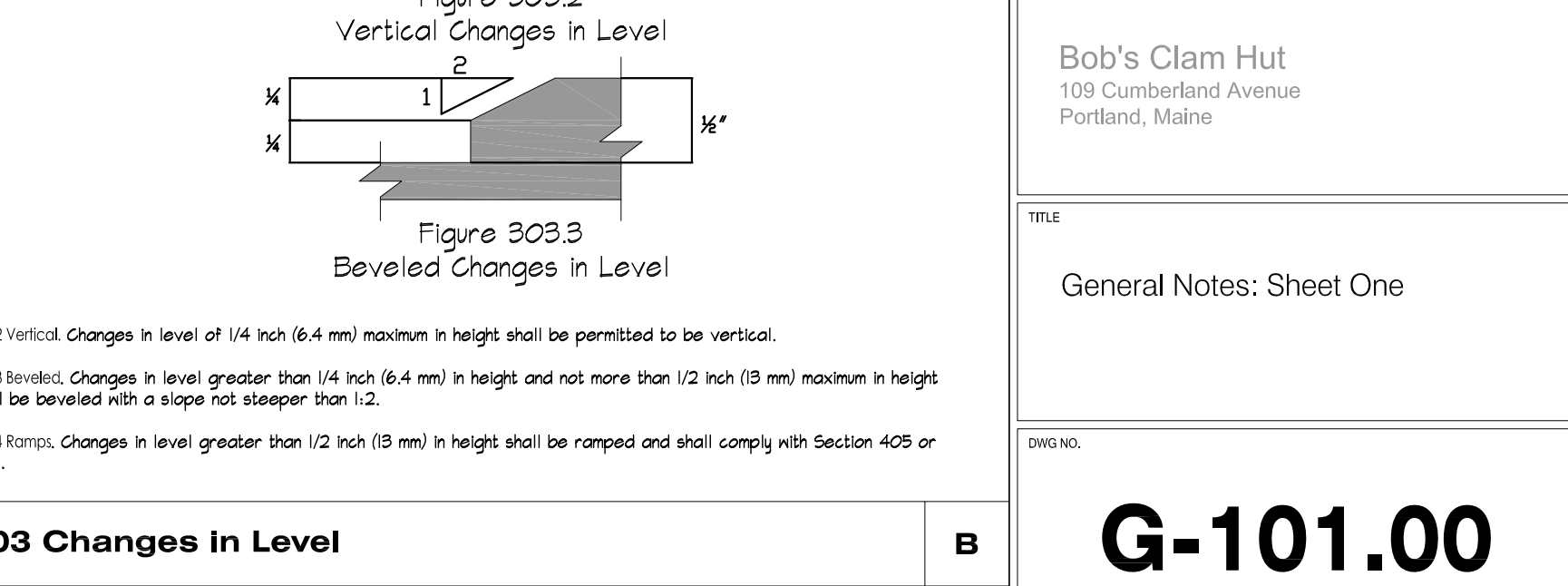
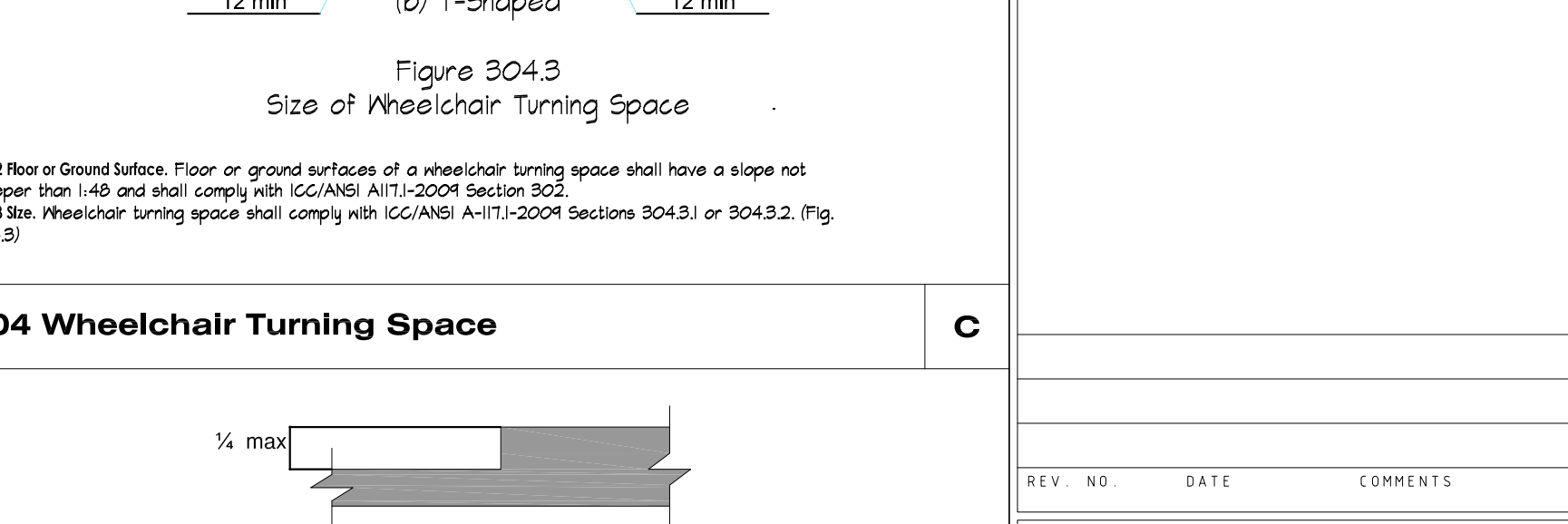
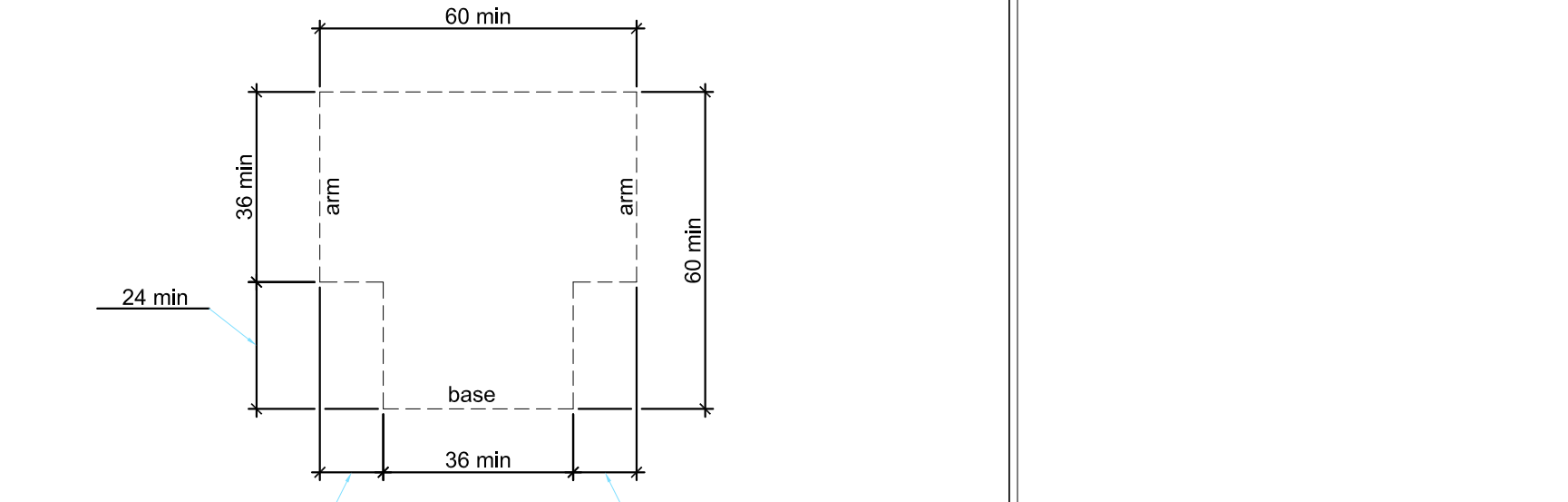
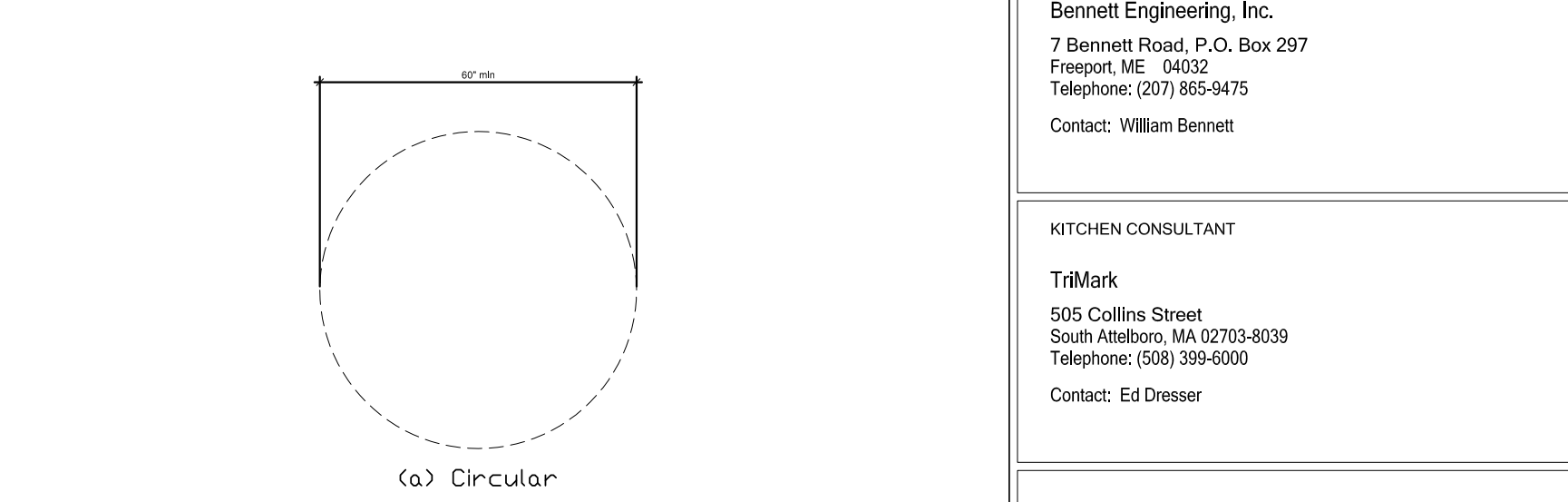
308.2 Forward Reach:  
 308.2.1 Unobstructed: Where a forward reach is unobstructed, the high forward reach shall be 48 inches (1220 mm) maximum and the low forward reach shall be 15 inches (380 mm) minimum above the floor.  
 308.2.2 Obstructed High Reach: Where a high forward reach is over an obstruction, the clear floor space complying with Section 305 shall extend beneath the element for a distance not less than the required reach depth over the obstruction. The high forward reach shall be 48 inches (1220 mm) maximum above the floor where the reach depth is 20 inches (510 mm) maximum. Where the reach depth exceeds 20 inches (510 mm), the high forward reach shall be 44 inches (1120 mm) maximum above the floor, and the reach depth shall be 25 inches (635 mm) minimum.

308.3 Side Reach:  
 308.3.1 Unobstructed: Where a clear floor space complying with Section 305 allows a parallel approach to an element and the edge of the clear floor space is 10 inches (255 mm) maximum from the element, the high side reach shall be 48 inches (1220 mm) maximum and the low side reach shall be 15 inches (380 mm) minimum above the floor.  
 308.3.2 Obstructed High Reach: Where a high forward reach is over an obstruction, the clear floor space complying with Section 305 shall extend beneath the element for a distance not less than the required reach depth over the obstruction. The high forward reach shall be 48 inches (1220 mm) maximum above the floor where the reach depth is 20 inches (510 mm) maximum. Where the reach depth exceeds 20 inches (510 mm), the high forward reach shall be 44 inches (1120 mm) maximum above the floor, and the reach depth shall be 25 inches (635 mm) minimum.

**308 Reach Ranges**



**302 Floor or Ground Surfaces**



302.2 Carpet: Carpet or carpet tile shall have a level loop, textured loop, level cut pile, or level cut-and-pile texture. The pile shall be 1/2 inch (13 mm) maximum in height. Exposed edges of carpet shall be fastened to the floor and shall have trim along the entire length of the exposed edge. Carpet edge trim shall comply with Section 303.

302.3 General: 302.3 General: Floor surfaces shall be stable, firm, and slip resistant, and shall comply with Section 302. Changes in level in floor surfaces shall comply with Section 303.

303.2 Carpet: Carpet or carpet tile shall have a level loop, textured loop, level cut pile, or level cut-and-pile texture. The pile shall be 1/2 inch (13 mm) maximum in height. Exposed edges of carpet shall be fastened to the floor and shall have trim along the entire length of the exposed edge. Carpet edge trim shall comply with Section 303.

303.3 Beveled Changes in Level: Changes in level greater than 1/4 inch (6.4 mm) in height and not more than 1/2 inch (13 mm) maximum in height shall be beveled with a slope not steeper than 1:2.

303.4 Ramps: Changes in level greater than 1/2 inch (13 mm) in height shall be ramped and shall comply with Section 405 or 406.

304.3 Size of Wheelchair Turning Space: Wheelchair turning space shall comply with ICC/ANSI A117.1-2009 Sections 304.3.1 or 304.3.2. (Fig. 304.3)

**302 Floor or Ground Surfaces**



OWNER  
 Bob's Clam Hut  
 315 U.S. Route 1  
 Kittery, Maine  
 Telephone: (207) 439-4233  
 Contact: Michael Landgarten

DESIGNER  
 Paul Bennett Architect PC  
 25 West 31st Street, Floor 7  
 New York, New York 10001  
 Telephone: (212) 209-1177  
 Contact: Lisa Wright

ENGINEER  
 Bennett Engineering, Inc.  
 7 Bennett Road, P.O. Box 297  
 Freeport, ME 04032  
 Telephone: (207) 865-9475  
 Contact: William Bennett

KITCHEN CONSULTANT  
 TriMark  
 505 Collins Street  
 South Amherst, MA 02703-8039  
 Telephone: (508) 399-6000  
 Contact: Ed Dresser

REV. NO. DATE COMMENTS

PROJECT  
 Bob's Clam Hut  
 109 Cumberland Avenue  
 Portland, Maine

TITLE  
 General Notes: Sheet One

DRWG NO.  
**G-101.00**

SCALE	N/A
ISSUED	29-DECEMBER-2017
REVISION	

DESIGNER  
**PAUL BENNETT ARCHITECT PC**  
 25 WEST 31ST STREET, NEW YORK, NEW YORK 10001  
 TEL (212) 209-1177