



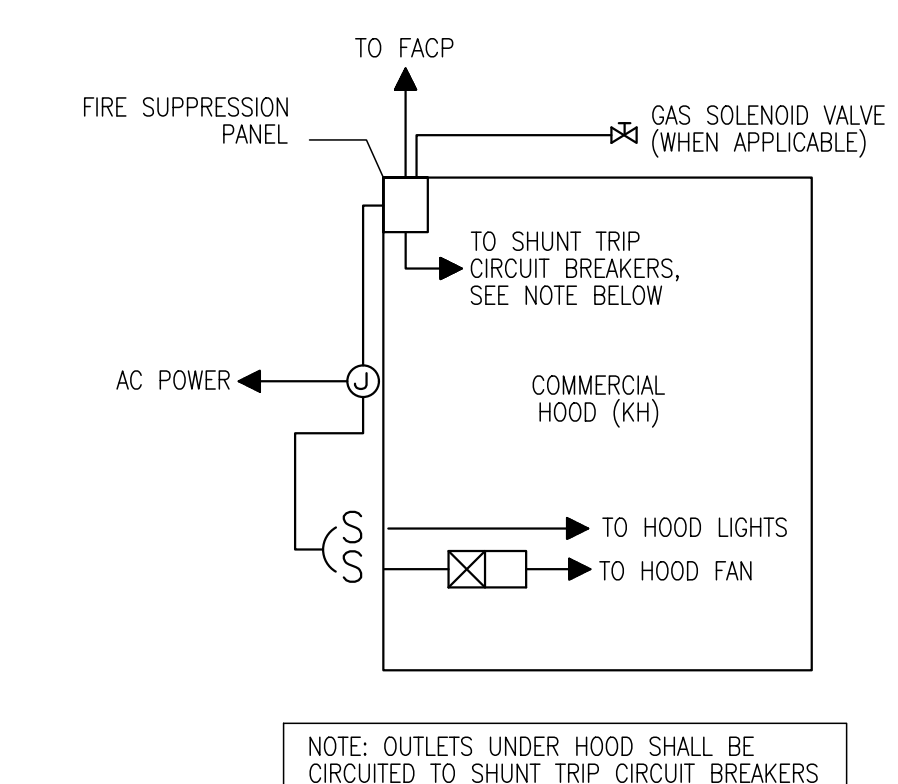
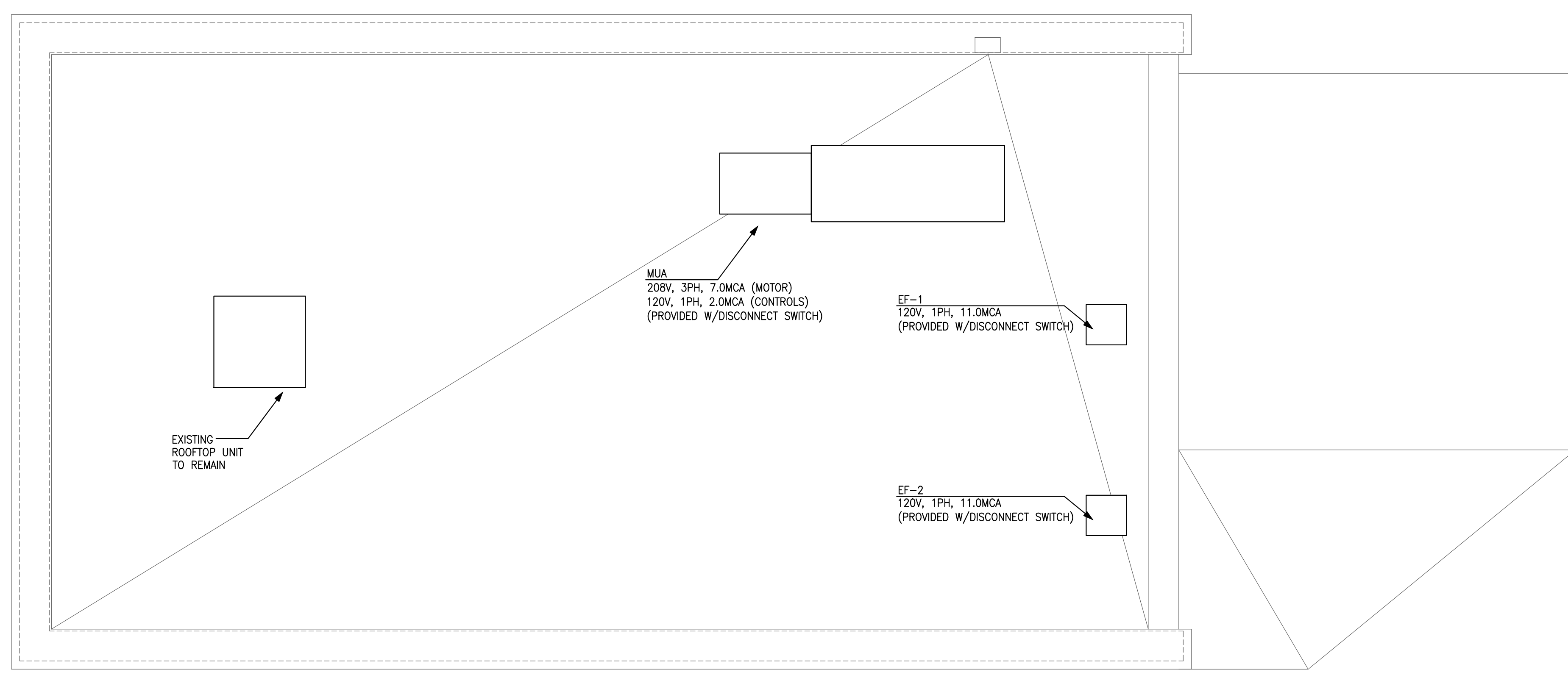
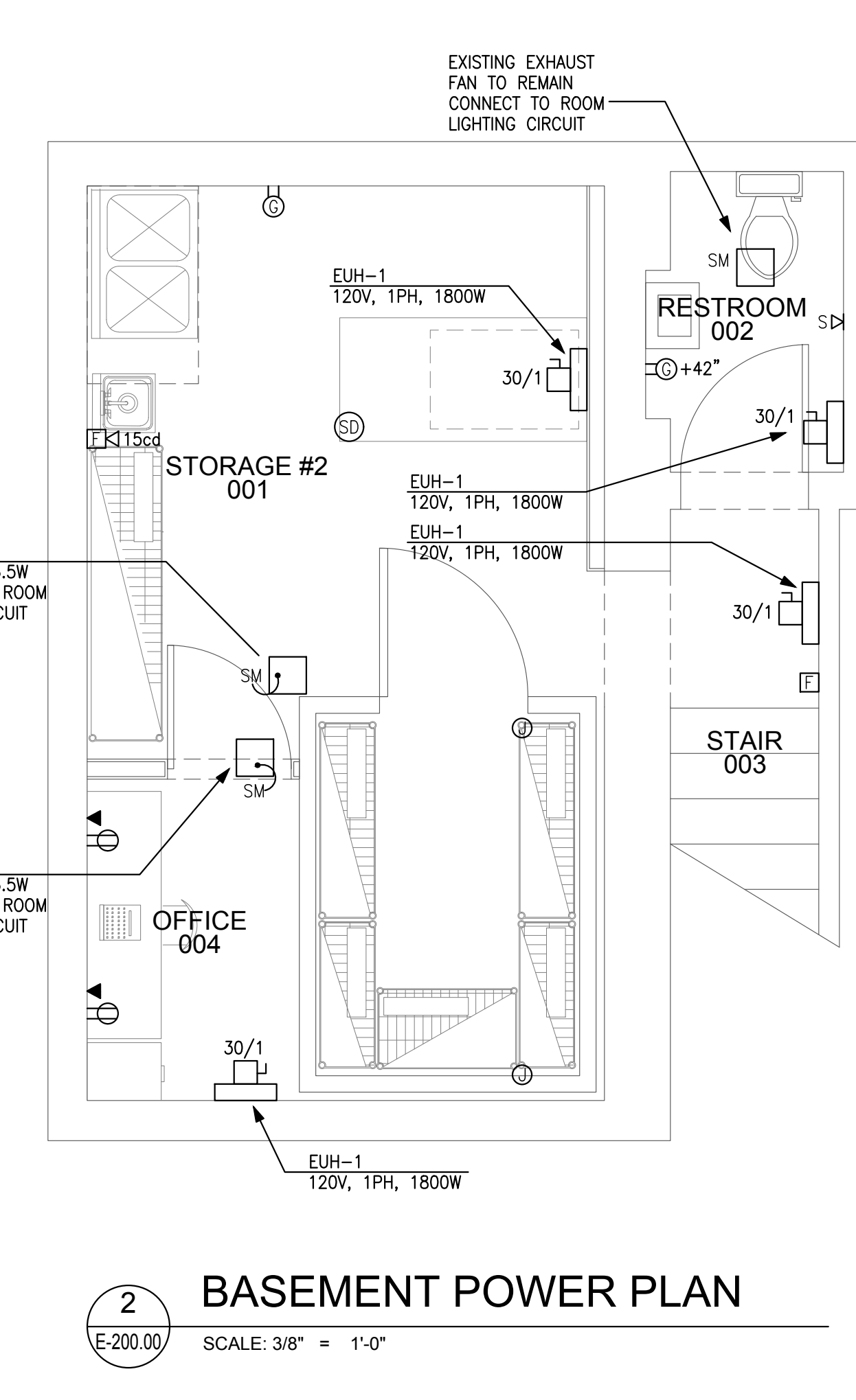
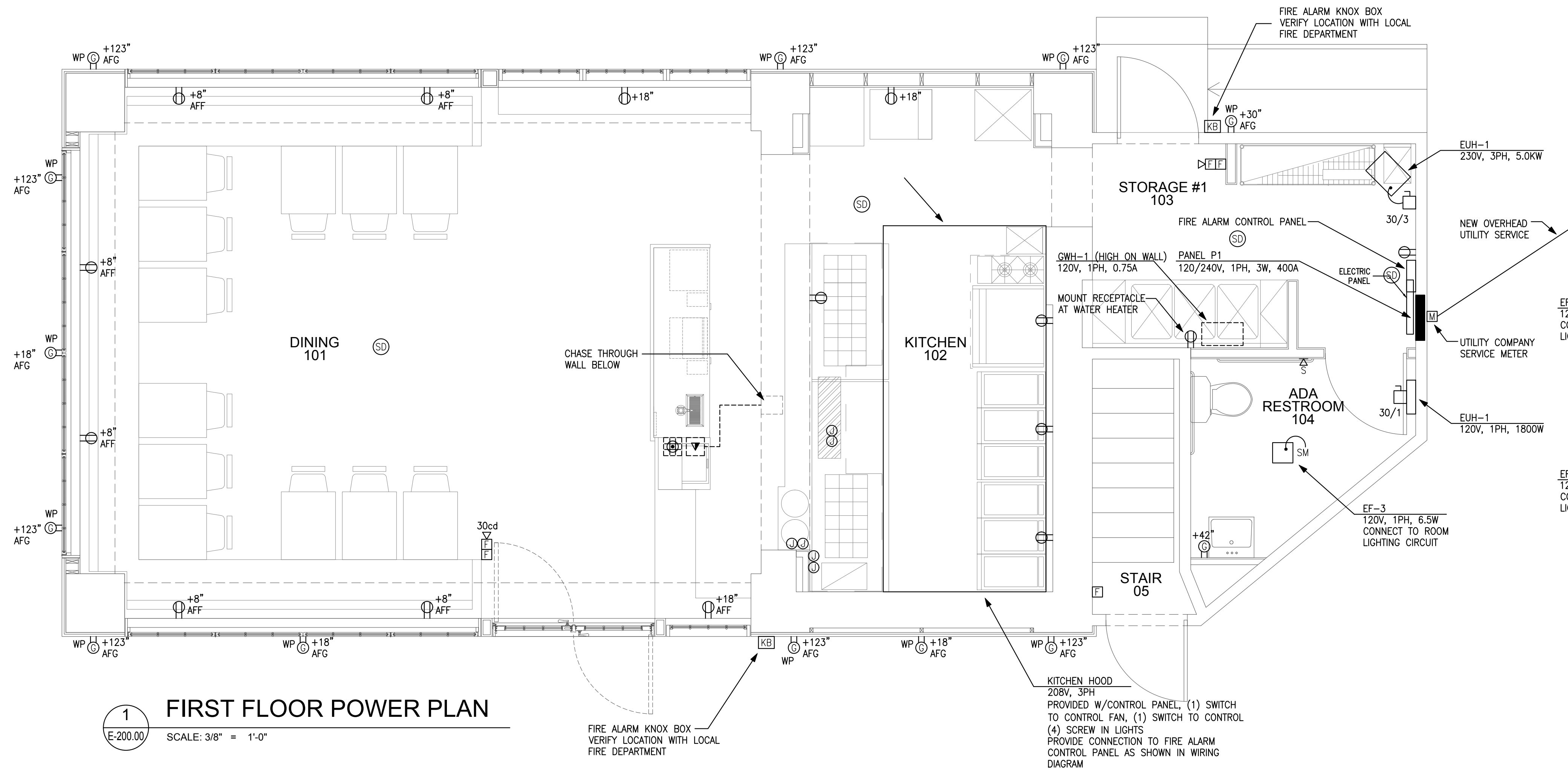
Bob's Clam Hut
109 Cumberland Avenue
Portland, Maine

OWNER
Bob's Clam Hut
315 U.S. Route 1
Kittery, Maine
Telephone: (207) 439-4233
Contact: Michael Landgarten

DESIGNER
Paul Bennett Architect PC
25 West 31st Street, Floor 7
New York, New York 10001
Telephone: (212) 299-1177
Contact: Lisa Wright

DESIGNER
Bennett Engineering, Inc.
7 Bennett Road, P.O. Box 297
Freeport, ME 04032
Telephone: (207) 865-9475
Contact: William Bennett

KITCHEN CONSULTANT
TriMark
505 Collins Street
South Amherst, MA 02703-8039
Telephone: (508) 399-6000
Contact: Ed Dresser



| ITEM INFORMATION | | | ELECTRICAL INFORMATION | | | | | CONNECTION | CKT BKR | NOTES |
|------------------|-----|------------------------------|------------------------|-------|------|-------|-----------|------------|-----------------------|-------|
| ITEM NUMBER | QTY | ITEM | VOLTAGE | PHASE | AMPS | WATTS | | | | |
| 1 | 2 | FRYERS | 120 | 1 | 3 | | | | | |
| 2 | 1 | ICE MACHINE | 115 | 1 | 11.7 | | DIRECT | | | |
| 3 | 1 | GAS COUNTERTOP GRIDDLE | 115 | 1 | 0.4 | | NEMA 5-20 | | | |
| 4 | 1 | REFRIGERATED EQUIPMENT STAND | 115 | 1 | 3 | | DIRECT | | | |
| 7 | 1 | WORKTOP REFRIGERATOR | 115 | 1 | 8 | | | | | |
| 9 | 1 | HEAT LAMP | 208 | 1 | | 6000 | DIRECT | | PROVIDE 2 CONNECTIONS | |
| | | | 120 | 1 | | 360 | DIRECT | | HEATING CIRCUIT | |
| 10 | 1 | HOLDING CABINET | 120 | 1 | 6.7 | | NEMA 5-20 | | LIGHTING CIRCUIT | |
| 11 | 1 | SANDWICH PREP UNIT | 120 | 1 | 7 | | NEMA 5-20 | | | |
| 18 | 2 | HOT FOOD WELLS | 120 | 1 | 3.8 | | DIRECT | | | |
| 19 | 1 | DRAFT BEER COOLER | 120 | 1 | 6.7 | | NEMA 5-20 | | | |
| 20 | 1 | SODA DISPENSER | 120 | 1 | 4.2 | | DIRECT | | | |
| 22 | 1 | WALK-IN COOLER | 208 | 1 | 11 | | DIRECT | | COMPRESSOR | |
| | | | 115 | 1 | 3 | | DIRECT | | | |

ISSUED FOR PERMIT

| REV. NO. | DATE | COMMENTS |
|----------|------|----------|
| | | |

PROJECT
Bob's Clam Hut
109 Cumberland Avenue
Portland, Maine

TITLE
POWER PLAN

DWG NO.
E-200.00

DESIGNER
PAUL BENNETT ARCHITECT PC
25 WEST 31ST STREET, NEW YORK, NEW YORK 10014
TEL (212) 299-1177

SEAL & SIGNATURE
STEVEN MONAGHAN
REGISTERED PROFESSIONAL ENGINEER
#8468

PAGE
- OF -
SCALE
3/8" - 1'-0"
ISSUED
29-DECEMBER-2017
REVISION