



**Bob's Clam Hut**  
109 Cumberland Avenue  
Portland, Maine

OWNER

Bob's Clam Hut  
315 U.S. Route 1  
Kittery, Maine  
Telephone: (207) 439-4233  
Contact: Michael Landgarten

DESIGNER

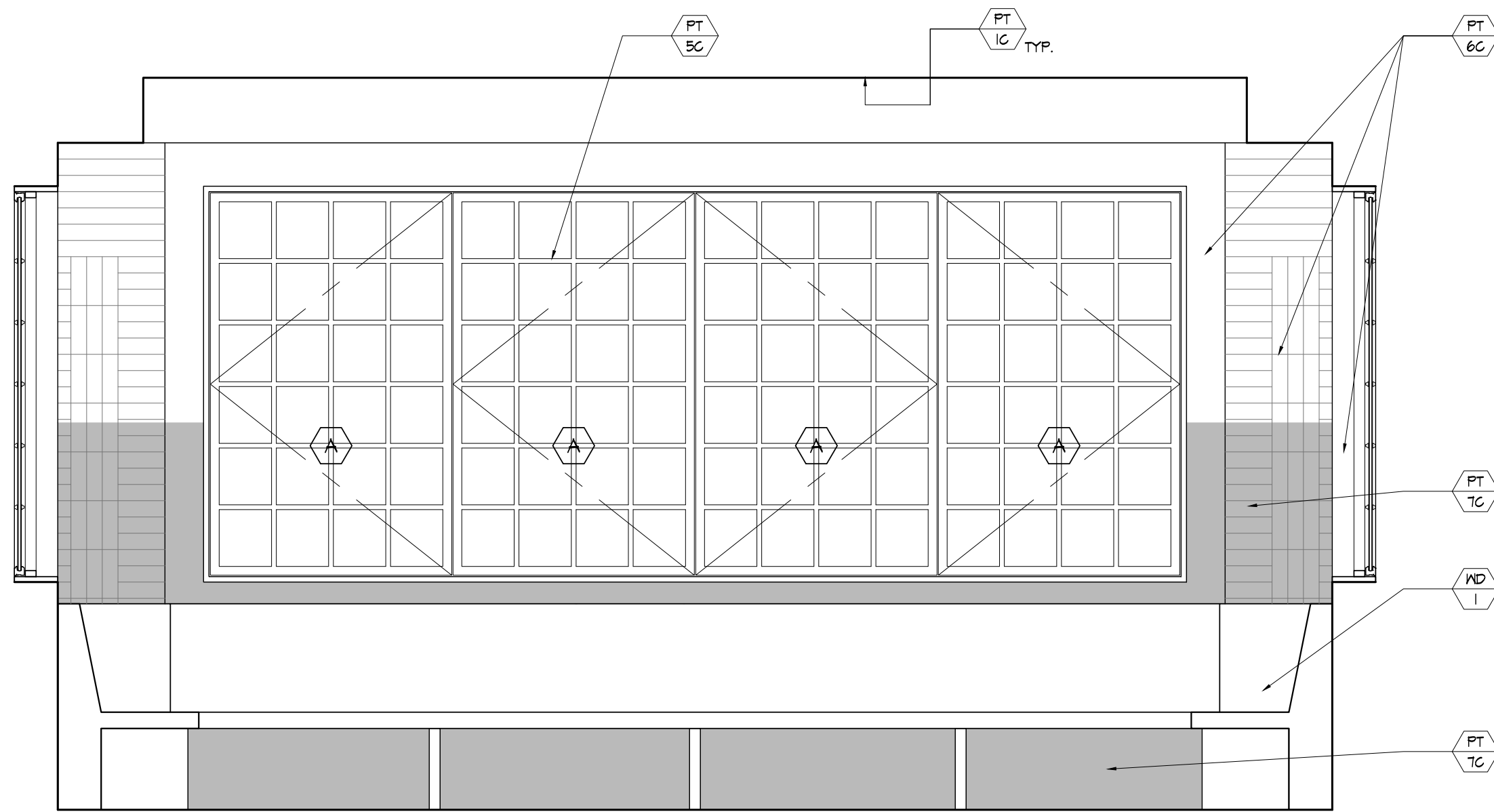
Paul Bennett Architect PC  
25 West 31st Street, Floor 7  
New York, New York, 10001  
Telephone: (212) 209-1177  
Contact: Lisa Wright

ENGINEER

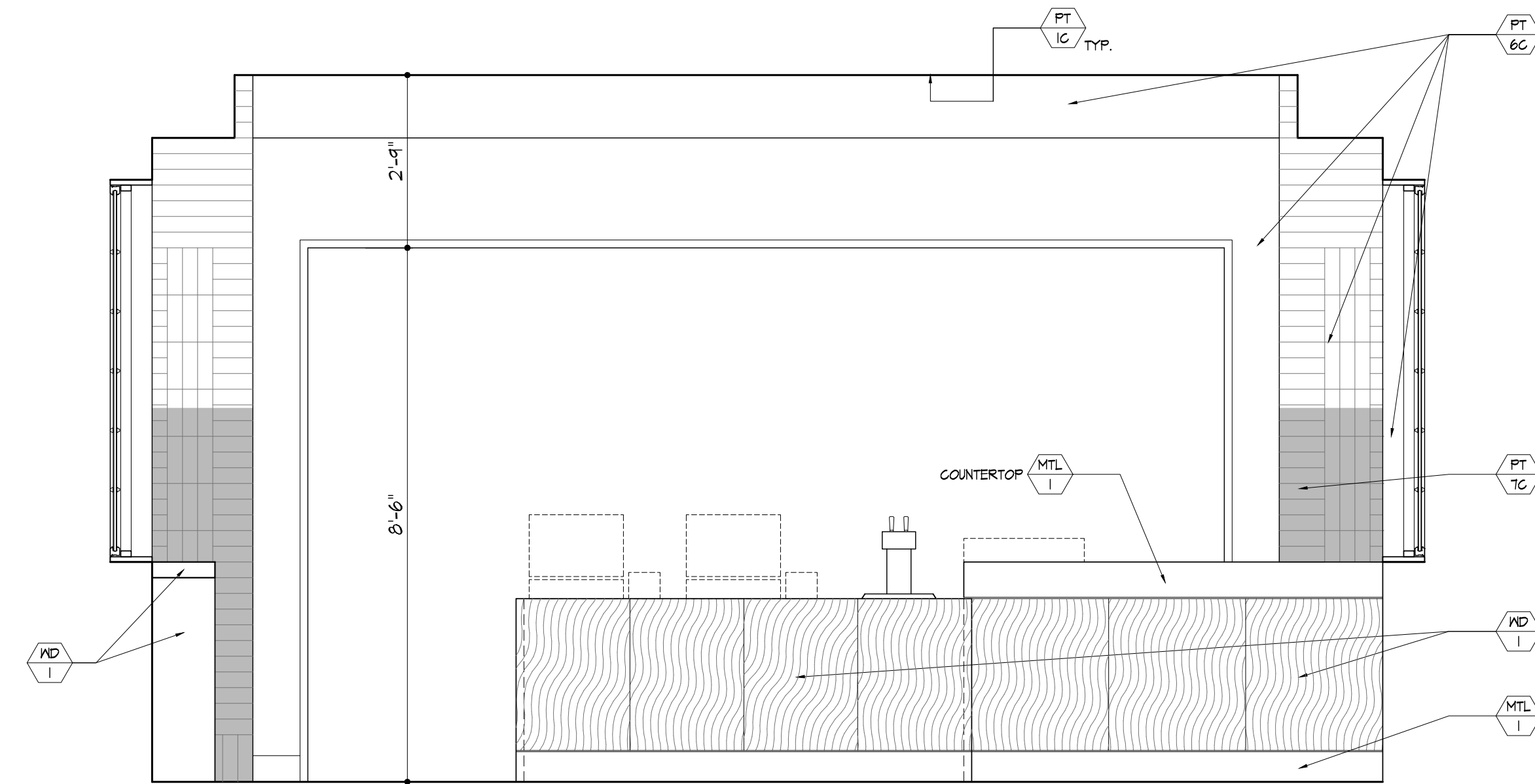
Bennett Engineering, Inc.  
7 Bennett Road, P.O. Box 297  
Freeport, ME 04032  
Telephone: (207) 855-9475  
Contact: William Bennett

KITCHEN CONSULTANT

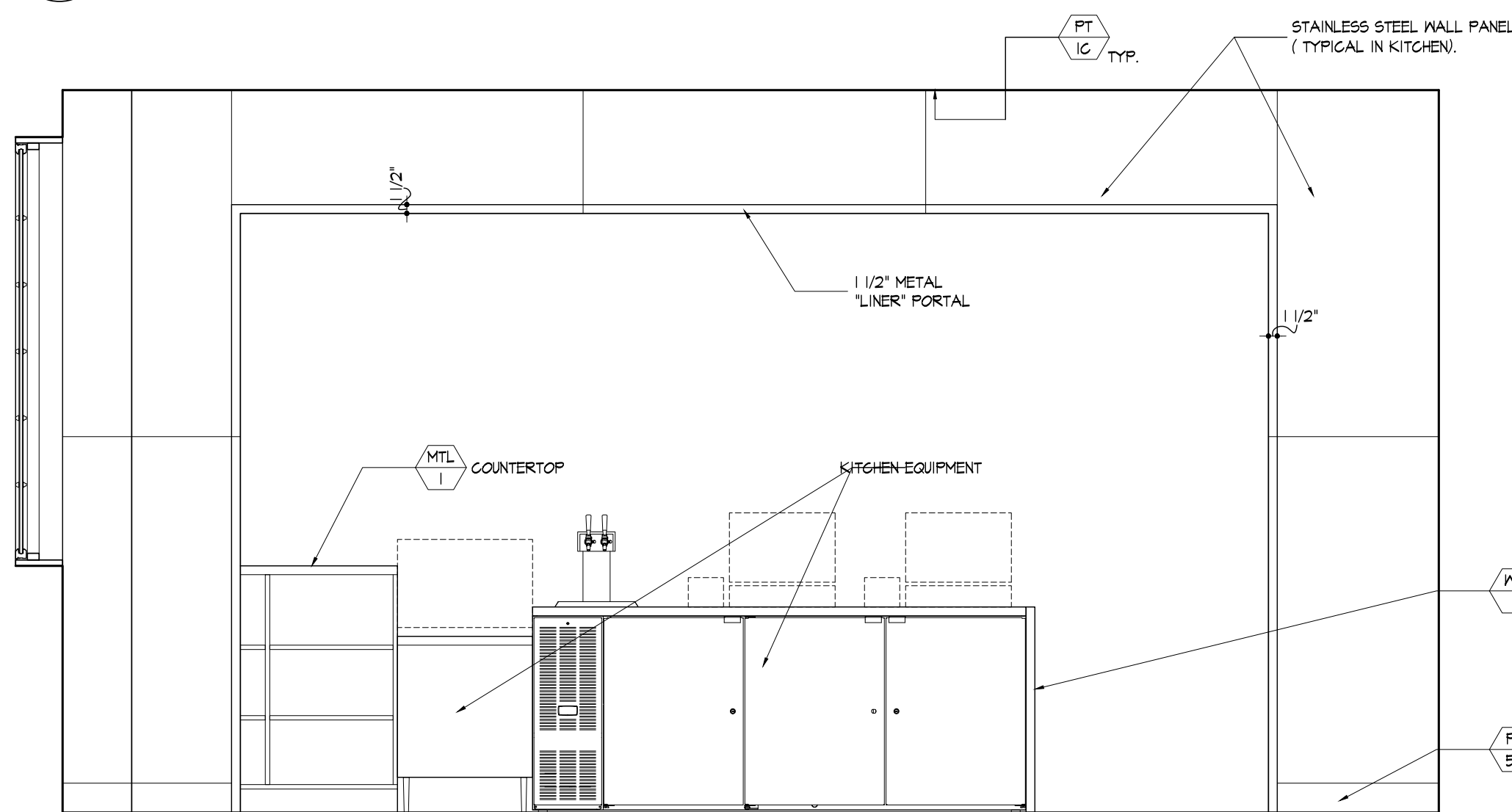
TriMark  
505 Collins Street  
South Amherst, MA 02703-8039  
Telephone: (508) 399-6000  
Contact: Ed Dresser



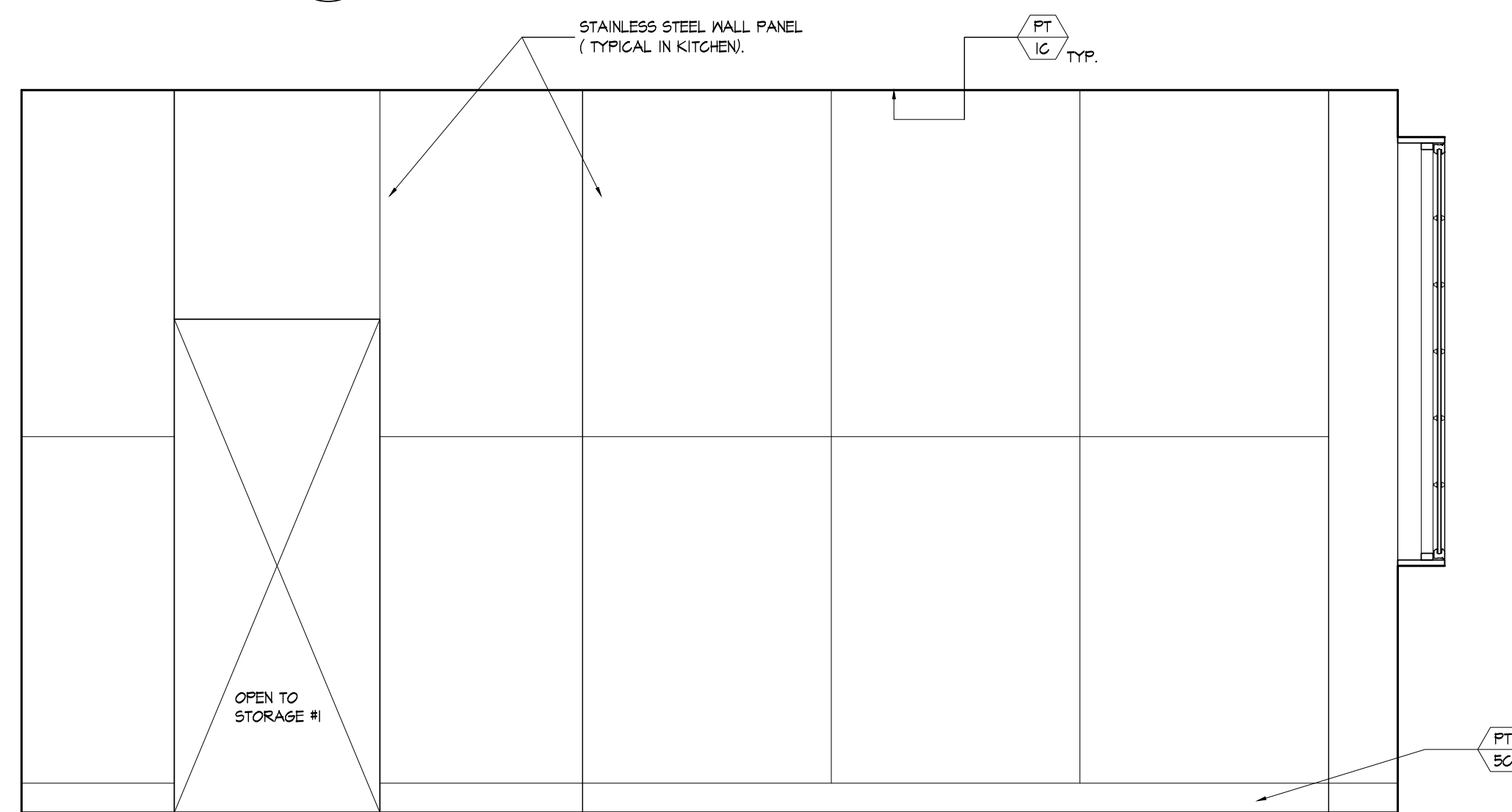
**1 Elevation: Interior**  
Scale: 1/2" = 1'-0"



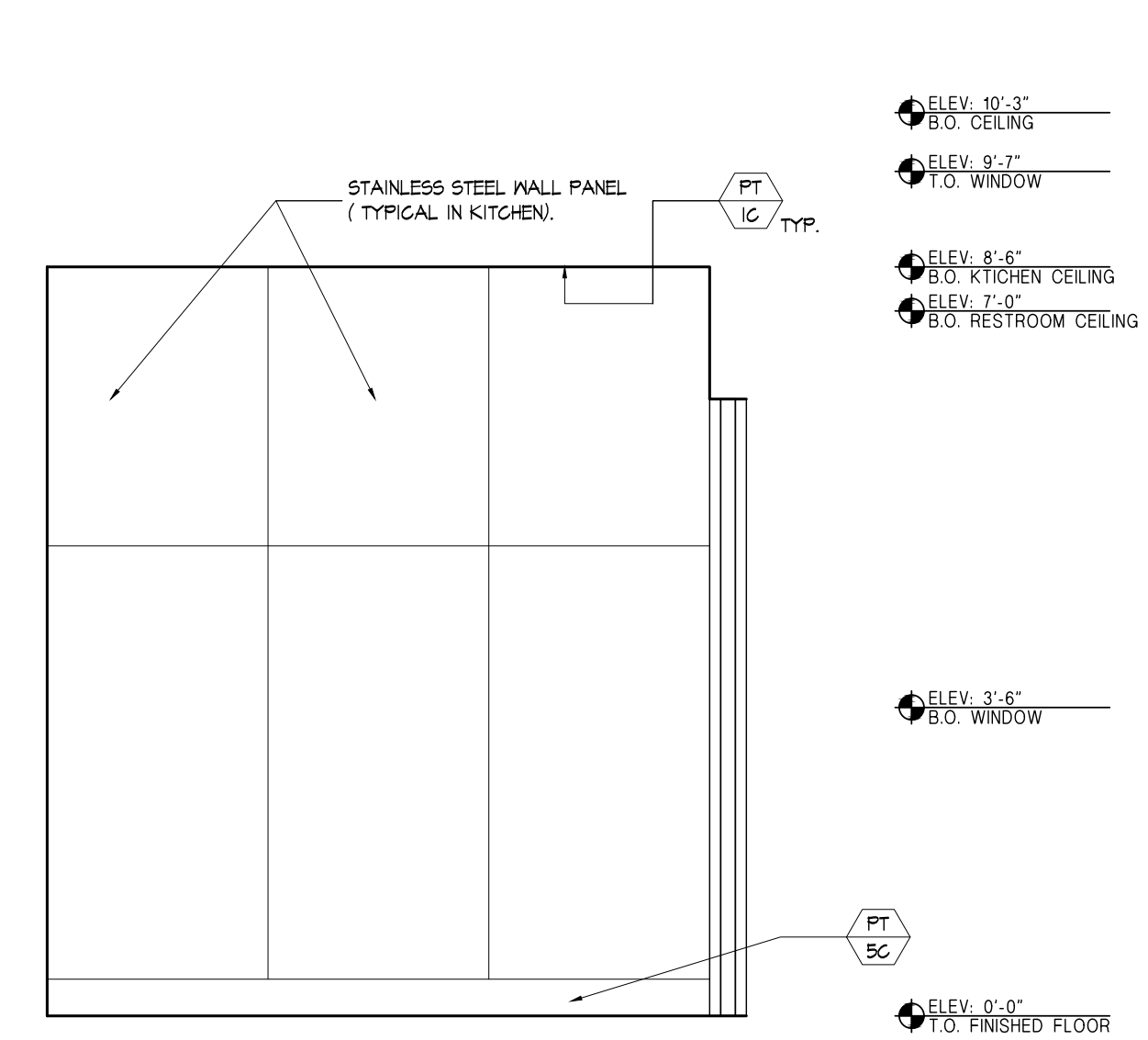
**2 Elevation: Interior**  
Scale: 1/2" = 1'-0"



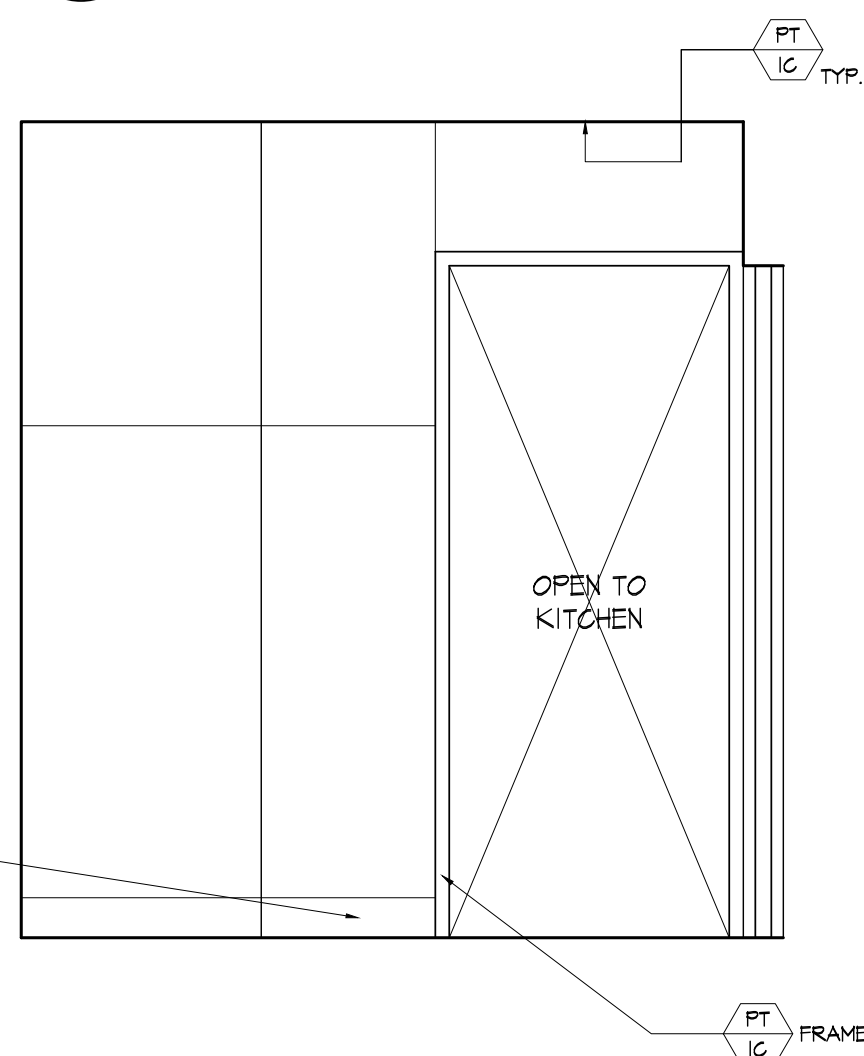
**3 Elevation: Interior**  
Scale: 1/2" = 1'-0"



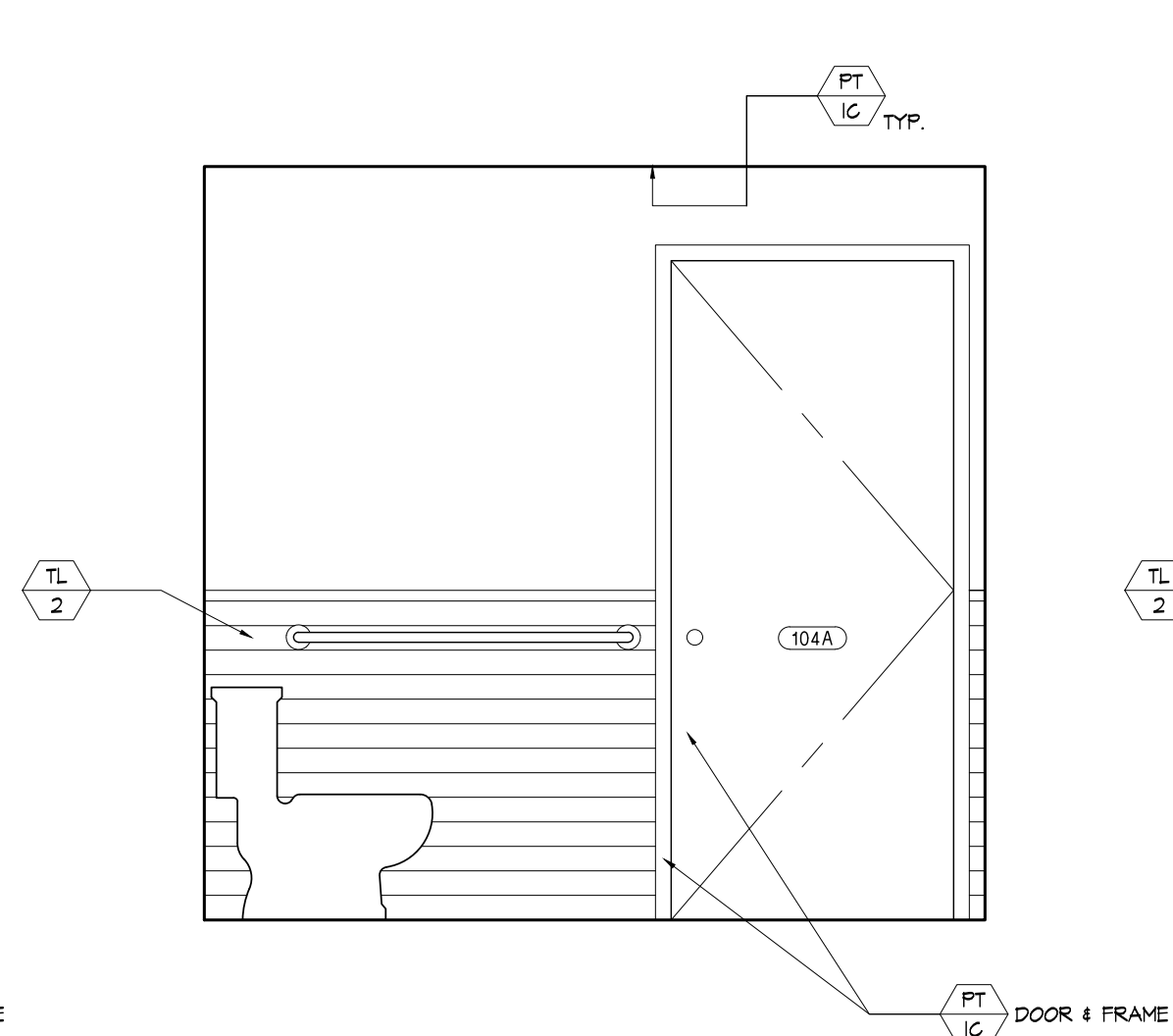
**4 Elevation: Interior**  
Scale: 1/2" = 1'-0"



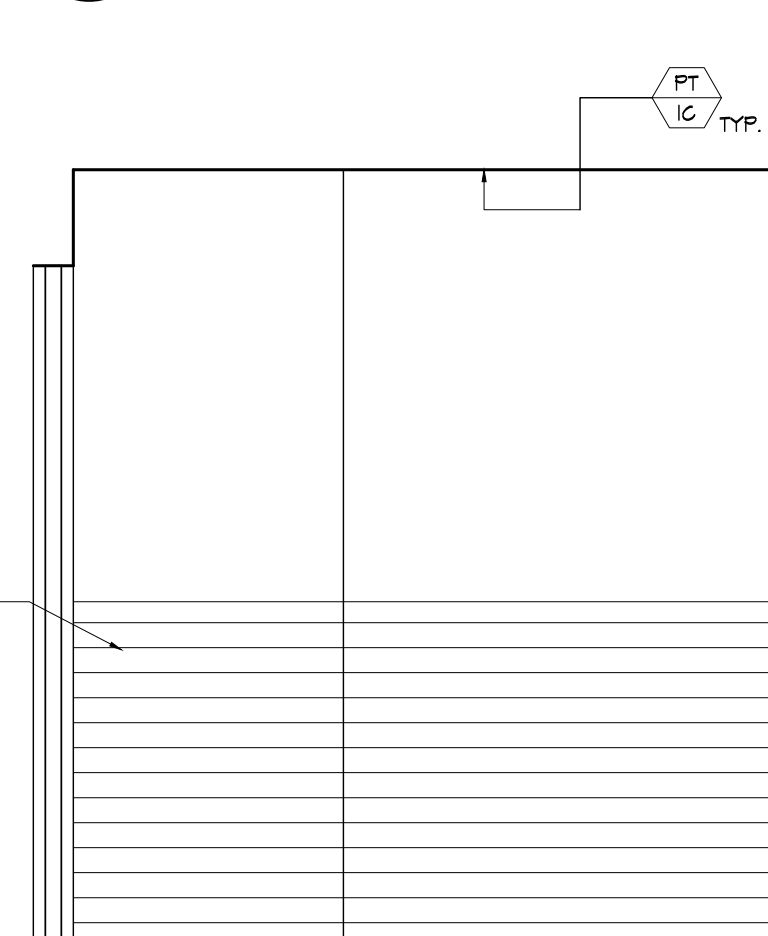
**5 Elevation: Interior**  
Scale: 1/2" = 1'-0"



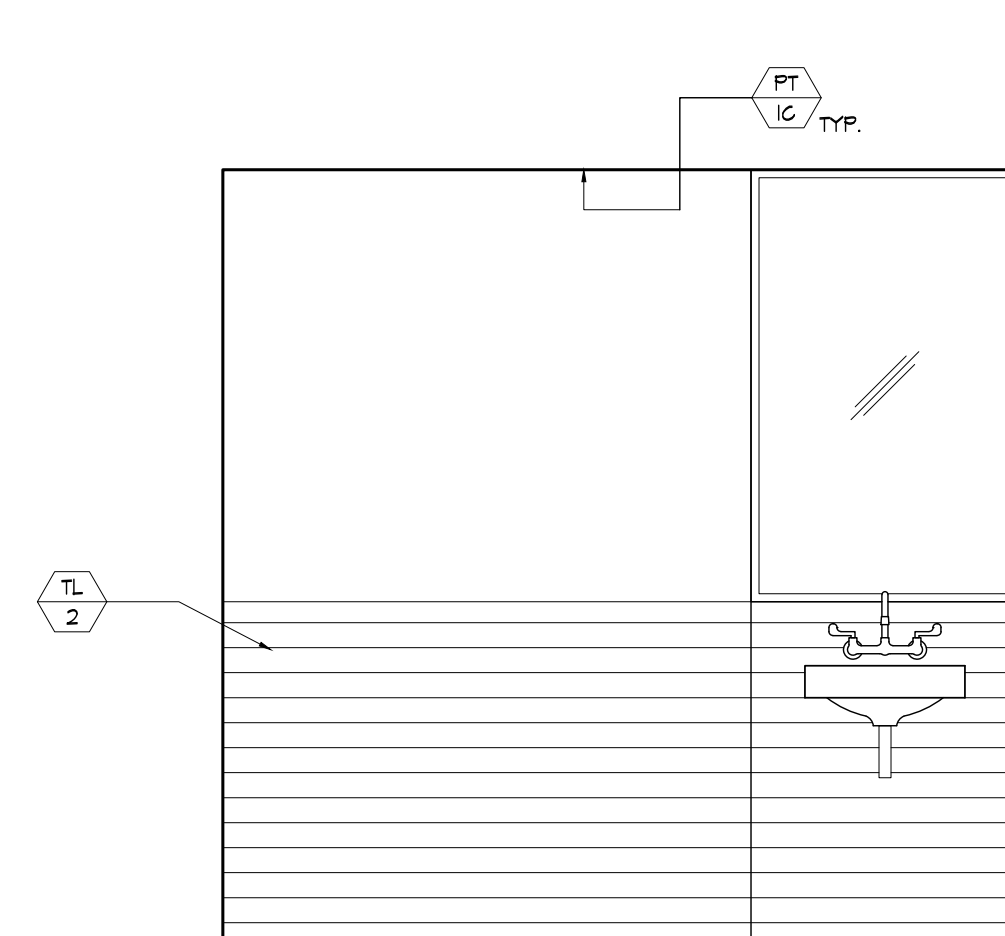
**6 Elevation: Interior**  
Scale: 1/2" = 1'-0"



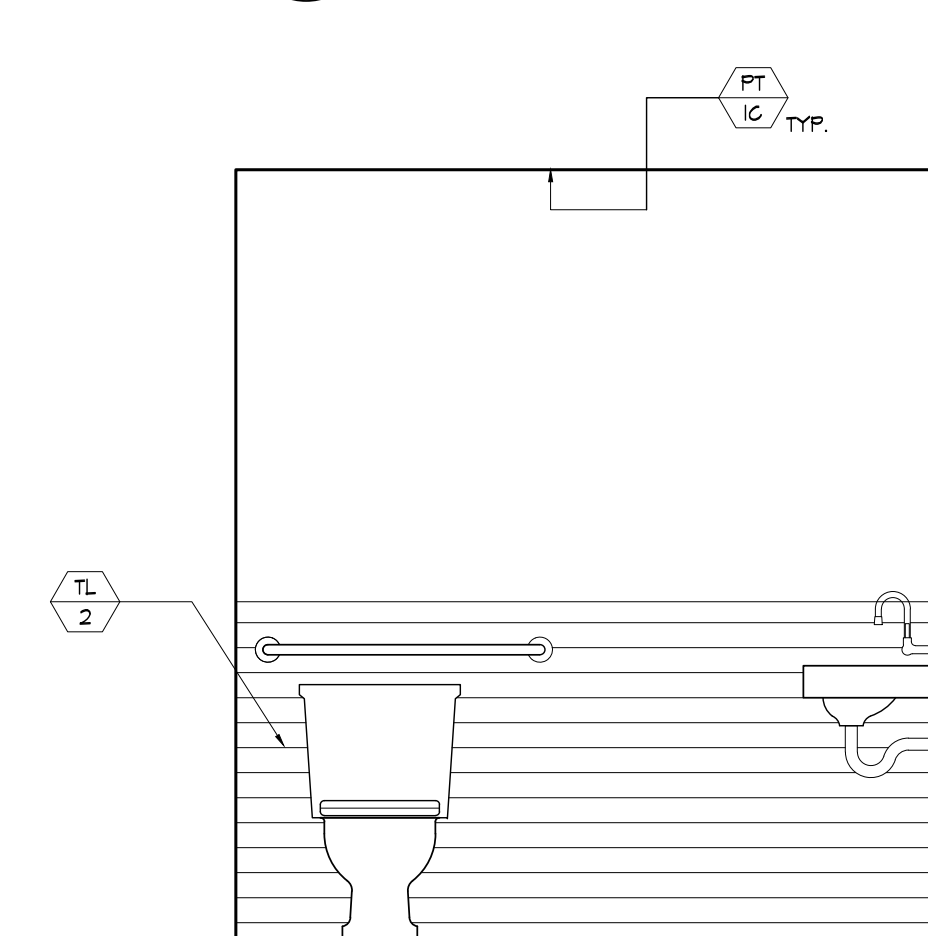
**7 Elevation: Interior**  
Scale: 1/2" = 1'-0"



**8 Elevation: Interior**  
Scale: 1/2" = 1'-0"



**9 Elevation: Interior**  
Scale: 1/2" = 1'-0"



**10 Elevation: Interior**  
Scale: 1/2" = 1'-0"

ELEV. 11'-3"  
B.O. CEILING

ELEV. 9'-7"  
T.O. WINDOW

ELEV. 8'-6"  
B.O. KITCHEN CEILING

ELEV. 7'-9"  
B.O. RESTROOM CEILING

ELEV. 3'-6"  
B.O. WINDOW

ELEV. 0'-0"  
F.O. FINISHED FLOOR

ELEV. 10'-3"  
B.O. CEILING

ELEV. 9'-7"  
T.O. WINDOW

ELEV. 8'-6"  
B.O. KITCHEN CEILING

ELEV. 7'-9"  
B.O. RESTROOM CEILING

ELEV. 3'-6"  
B.O. WINDOW

ELEV. 0'-0"  
F.O. FINISHED FLOOR

ELEV. 8'-6"  
B.O. KITCHEN CEILING

ELEV. 7'-9"  
B.O. RESTROOM CEILING

ELEV. 3'-6"  
B.O. WINDOW

ELEV. 0'-0"  
F.O. FINISHED FLOOR

REV. NO. DATE COMMENTS

PROJECT  
Bob's Clam Hut  
109 Cumberland Avenue  
Portland, Maine

TITLE  
Interior Elevations

DWG. NO.  
**A-203.00**

SCALE & SIGNATURE PAGE  
12 OF 15

SCALE  
3/8" = 1'-0"

ISSUED  
29-DECEMBER-2017

REVISION

DESIGNER  
**PAUL BENNETT ARCHITECT PC**  
25 WEST 31ST STREET, NEW YORK, NEW YORK, 10001  
TEL (212) 209-1177