



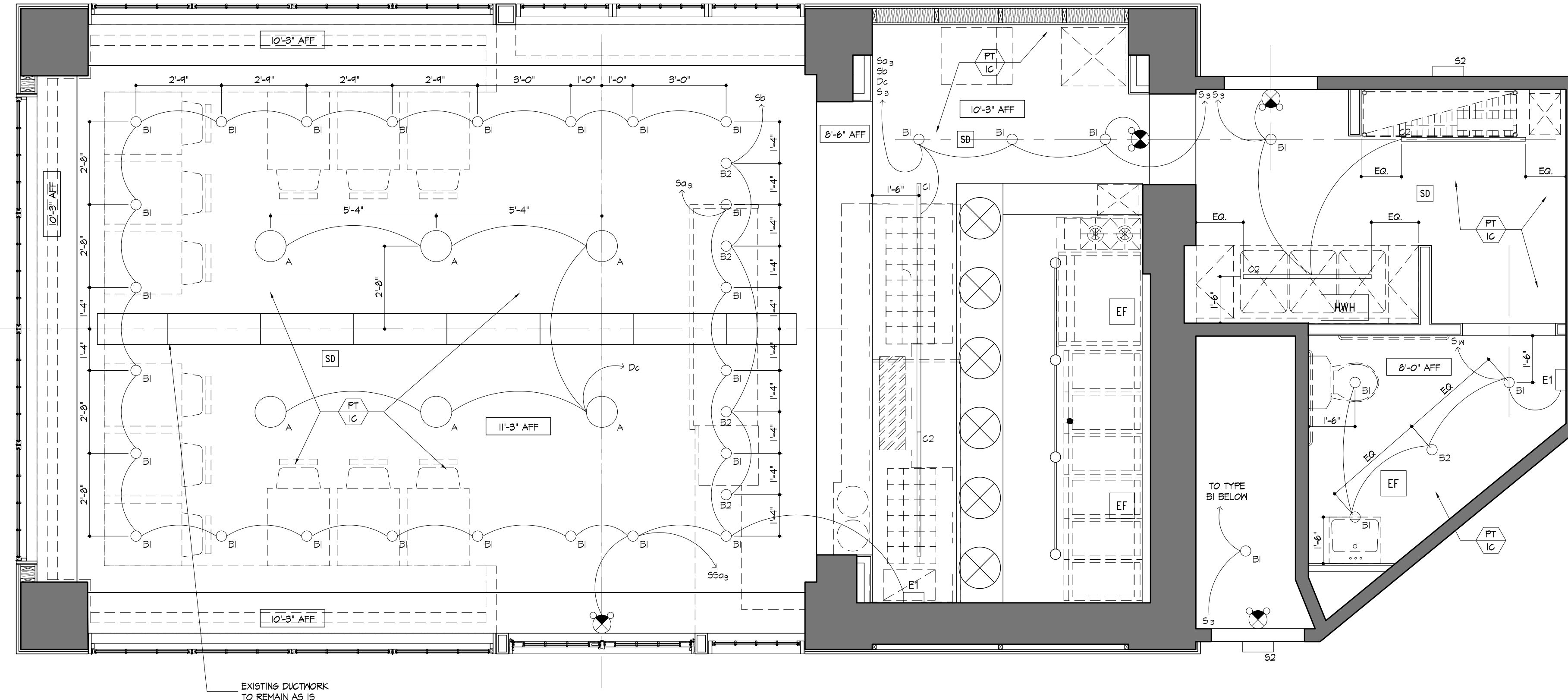
**Bob's Clam Hut**  
109 Cumberland Avenue  
Portland, Maine

OWNER  
Bob's Clam Hut  
315 U.S. Route 1  
Kittery, Maine  
Telephone: (207) 439-4233  
Contact: Michael Landgarten

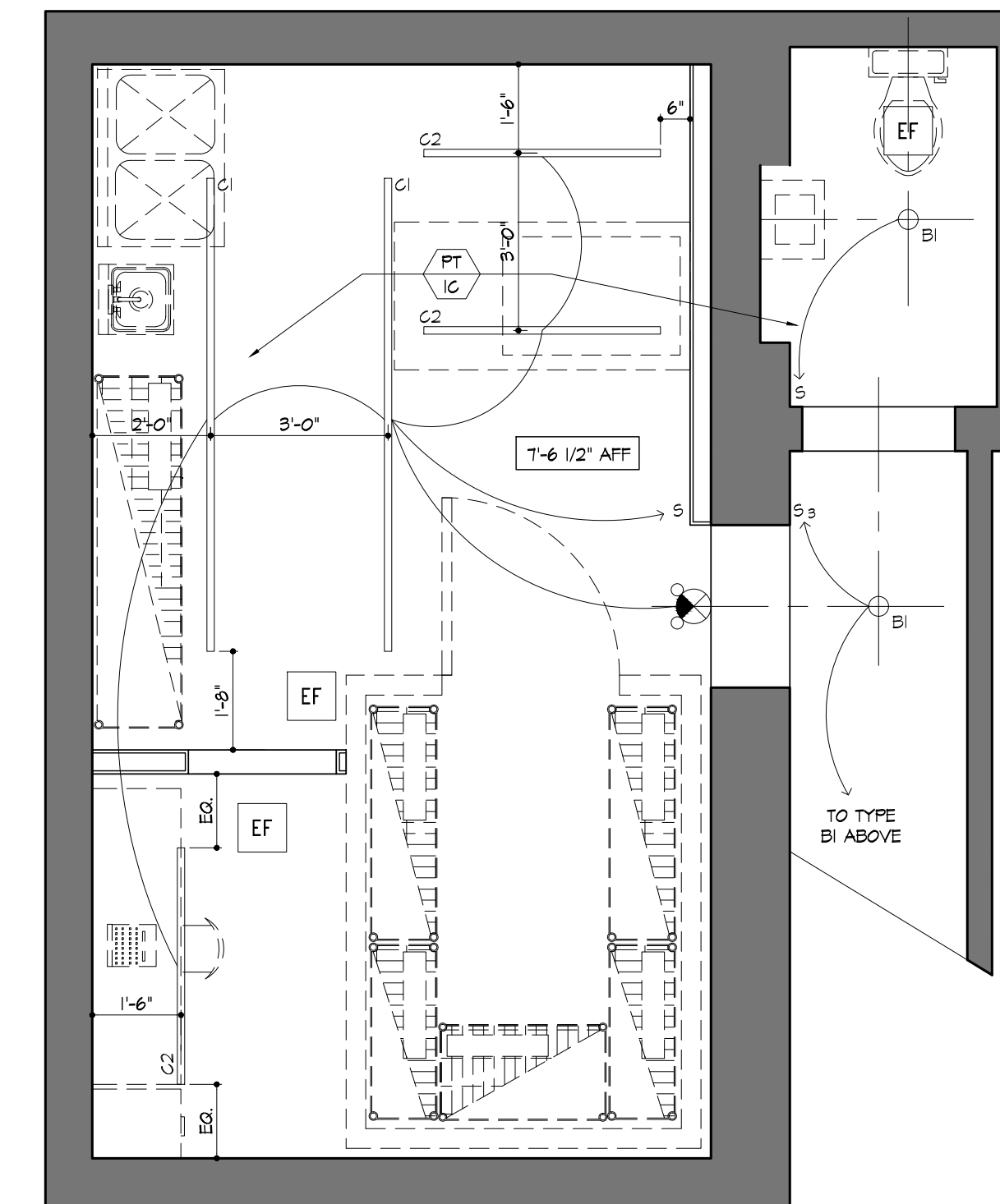
DESIGNER  
Paul Bennett Architect PC  
25 West 31st Street, Floor 7  
New York, New York, 10001  
Telephone: (212) 209-1177  
Contact: Lisa Wright

ENGINEER  
Bennett Engineering, Inc.  
7 Bennett Road, P.O. Box 297  
Freeport, ME 04032  
Telephone: (207) 855-9475  
Contact: William Bennett

KITCHEN CONSULTANT  
TriMark  
505 Collins Street  
South Attleboro, MA 02703-8039  
Telephone: (508) 399-6000  
Contact: Ed Dresser



**1 Reflected Ceiling Plan: Ground Floor**  
Scale: 3/8" = 1'-0"



**2 Reflected Ceiling Plan: Basement**  
Scale: 3/8" = 1'-0"

**Legend**

- EXISTING
- NEW CONSTRUCTION
- SMOKE DETECTOR
- EXIT SIGN W/ EMERGENCY LIGHTS
- EXHAUST FAN
- EMERGENCY LIGHT
- HOT WATER HEATER

Lighting Schedule									
SYMBOL	NAME	QUANTITY	DESCRIPTION	MFR	MODEL NO.	LAMP	MAX WATTS	DIM	FINISH
	LIGHT TYPE A	6	PENDANT LAMP	SCHOOLHOUSE LIGHTING	-	PHILLIP 12E26A60-I	125W	YES	(DESIGNER TO CONFIRM)
	LIGHT TYPE BI	34	MEDIUM BASE LAMP HOLDER	STONCO	3900 SERIES	PHILLIPS II-PAR30S-3000K	20W	NO	(DESIGNER TO CONFIRM)
	LIGHT TYPE B2	5	PORCELAIN OUTLET BOX MOUNT	LEVITON	4874	PHILLIPS II-PAR30S-3000K	20W	NO	(DESIGNER TO CONFIRM)
	LIGHT TYPE C1	3	8" PENDANT MOUNTED 2 CIRCUIT DOWNLIGHT FLUORESCENT	AHL LIGHTING	AL8000-(16")-4-FB2TB-N-55K & 2 CIRCUIT & 1/2 DENSITY COLOR CORRECTIVE SLEEVE BY AHL	(4) PHILLIPS F32TB/835	110W	NO	(DESIGNER TO CONFIRM)
	LIGHT TYPE C2	6	4" PENDANT MOUNTED 2 CIRCUIT DOWNLIGHT FLUORESCENT	AHL LIGHTING	AL8020-(14")-4-FB2TB-N-55K & 2 CIRCUIT & 1/2 DENSITY COLOR CORRECTIVE SLEEVE BY AHL	(4) PHILLIPS F32TB/835	110W	NO	(DESIGNER TO CONFIRM)
	LIGHT TYPE S2	2	WALL MTD. COMPACT ARCHITECTURAL DIE CAST ALUMINUM EXTERIOR LED LIGHT W/ IESNA TYPE III DISTRIBUTION & BUTTON PHOTOCELL CONTROL UL LISTED FOR NET LOCATIONS. FINISH: BRONZE	STONCO	FLP116-51BZPCB	44W / 3500K / 4560 LUMENS	44W	NO	(DESIGNER TO CONFIRM)

REV. NO. DATE COMMENTS

PROJECT  
Bob's Clam Hut  
109 Cumberland Avenue  
Portland, Maine

TITLE  
Reflected Ceiling Plans

DWG NO.  
**A-102.00**

SEAL & SIGNATURE PAGE 8 OF 15  
SCALE 3/8" = 1'-0"  
ISSUED 29-DECEMBER-2017  
REVISION

DESIGNER  
**PAUL BENNETT ARCHITECT PC**  
25 WEST 31ST STREET, NEW YORK, NEW YORK, 10001  
TEL (212) 209-1177