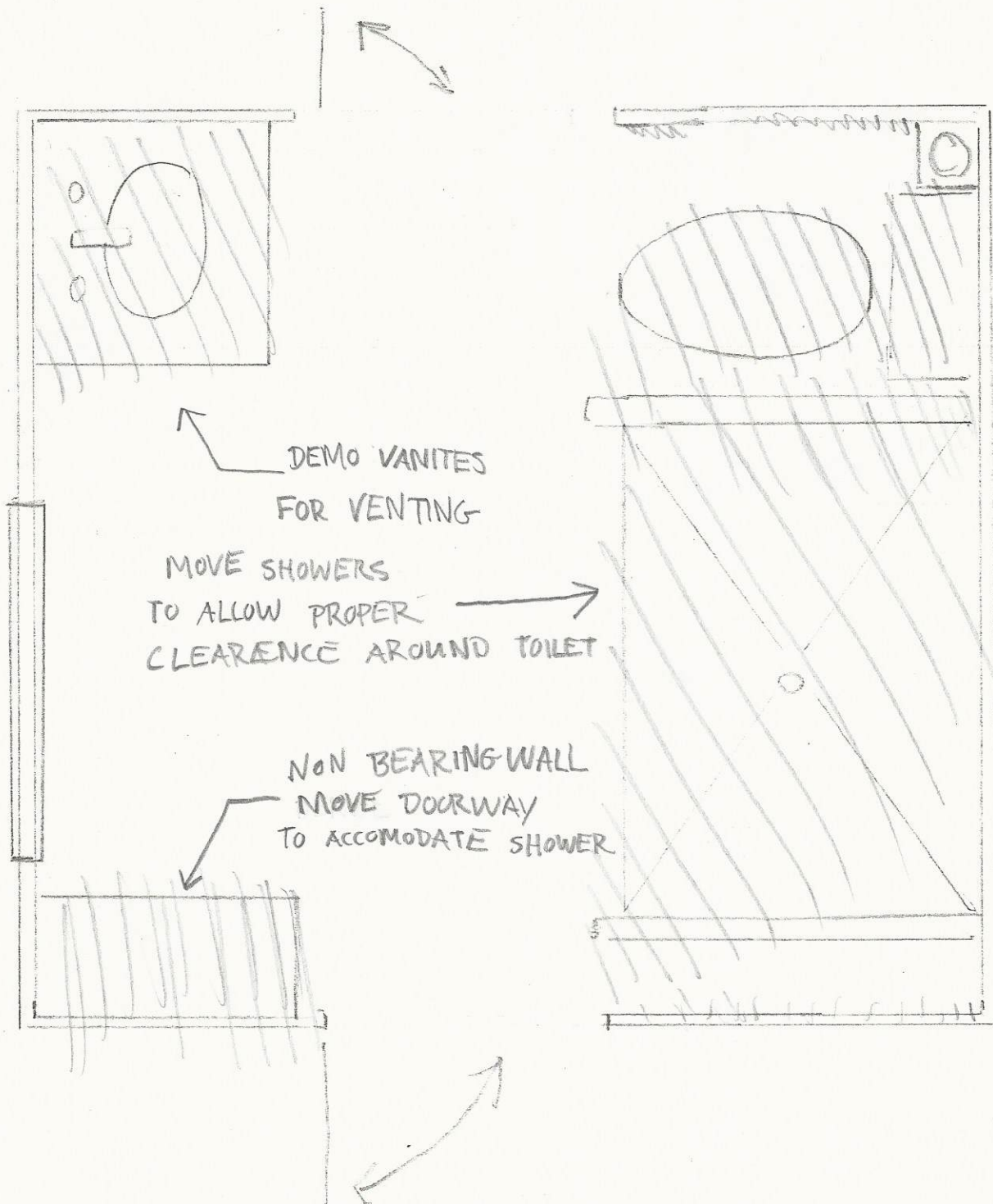


# BLACK RESIDENCE

11 CLEEVE ST  
PORTLAND

## BATH DETAIL FOR ALL 3 UNITS

- THE PLUMBING IN ALL 3 UNITS VIOLATED CODE
- DEMOLITION OF EXISTING BATH TO UPDATE
- ALL BATHS RESTORED TO SIMILAR LAYOUT MEETING CODE



DEMOLITION PLAN

3/4" = 1 FOOT