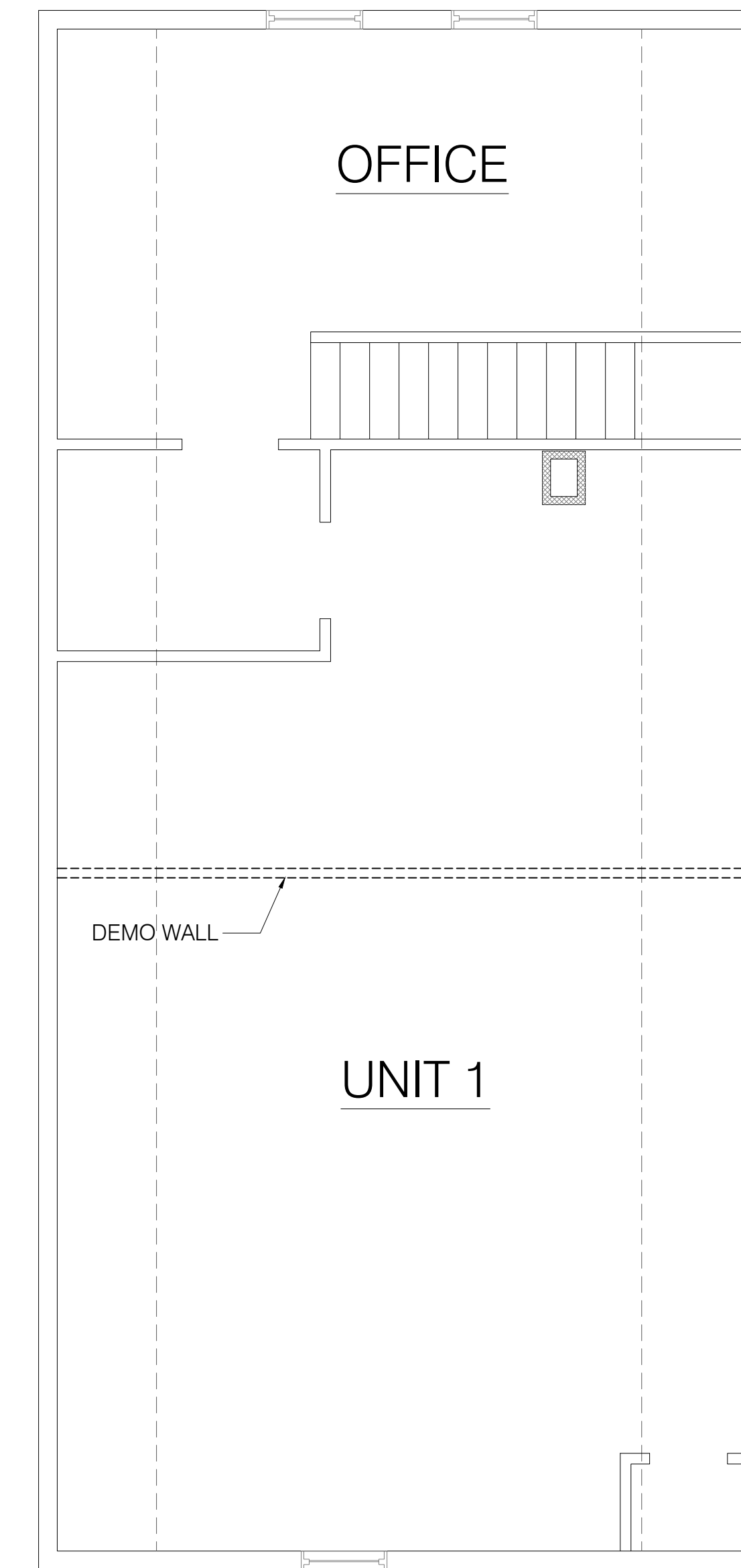


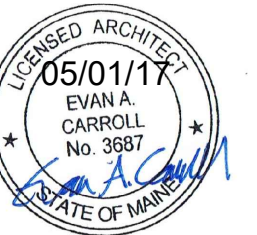
3 SECOND FLOOR  
SCALE: 1/4" = 1'-0"



4 THIRD FLOOR  
SCALE: 1/4" = 1'-0"

GENERAL DEMOLITION NOTES:

- A. REMOVE WALLS AS NOTED ON PLANS. VERIFY THAT WALLS TO BE REMOVED ARE NON-LOAD BEARING. IMMEDIATELY NOTIFY THE ARCHITECT OF ANY DISCREPANCIES. BEFORE PENETRATING JOISTS, BEAMS OR OTHER STRUCTURAL MEMBERS, CONSULT WITH THE ARCHITECT FOR APPROVAL.
- B. UNLESS OTHERWISE NOTED, REMOVE DOORS, FRAMES, BASE, TRIM, ELECTRICAL ITEMS, SURFACE MOUNTED ITEMS IN WALLS THAT ARE TO BE DEMOLISHED. UNLESS NOTED OTHERWISE, REMOVE WALLS TO THEIR FULL HEIGHT WHERE THEY ARE INDICATED FOR REMOVAL.
- C. CARE SHALL BE TAKEN BY THE CONTRACTOR TO PROTECT EXISTING SYSTEMS AND SURFACES TO REMAIN. ALL DAMAGE RESULTING FROM THE CONTRACTOR'S OPERATIONS SHALL BE REPAIRED OR REPLACED AS APPROVED BY THE ARCHITECT AT NO ADDITIONAL COST TO THE OWNER.
- D. WHERE REMOVALS OCCUR, PATCH HOLES AND AREAS OF MISSING FINISH (IE EXPOSED STUD AREAS WHERE WALLS ARE REMOVED, FLOOR FINISHES, ETC. TO MATCH EXISTING ADJACENT SURFACE). PROVIDE A SMOOTH CONTINUOUS SURFACE FREE OF SHADOW LINES.
- E. THE CONTRACTOR SHALL NOTIFY THE ARCHITECT IMMEDIATELY FOR TESTING AND / OR REMOVAL OF HAZARDOUS MATERIALS. ANY ASBESTOS REMOVAL NECESSARY FOR THE SAFE IMPLEMENTATION OF THIS PROJECT SHALL BE CONTRACTED DIRECTLY BY THE OWNER. IF NECESSARY, THE CONTRACTOR SHALL COORDINATE WITH THESE EFFORTS IF ENCOUNTERED.
- F. UNLESS OTHERWISE NOTED, ALL ITEMS ON DEMOLITION PLANS ARE EXISTING.



REVISIONS	PERMIT DOCUMENTS
1	
2	
3	
4	
5	