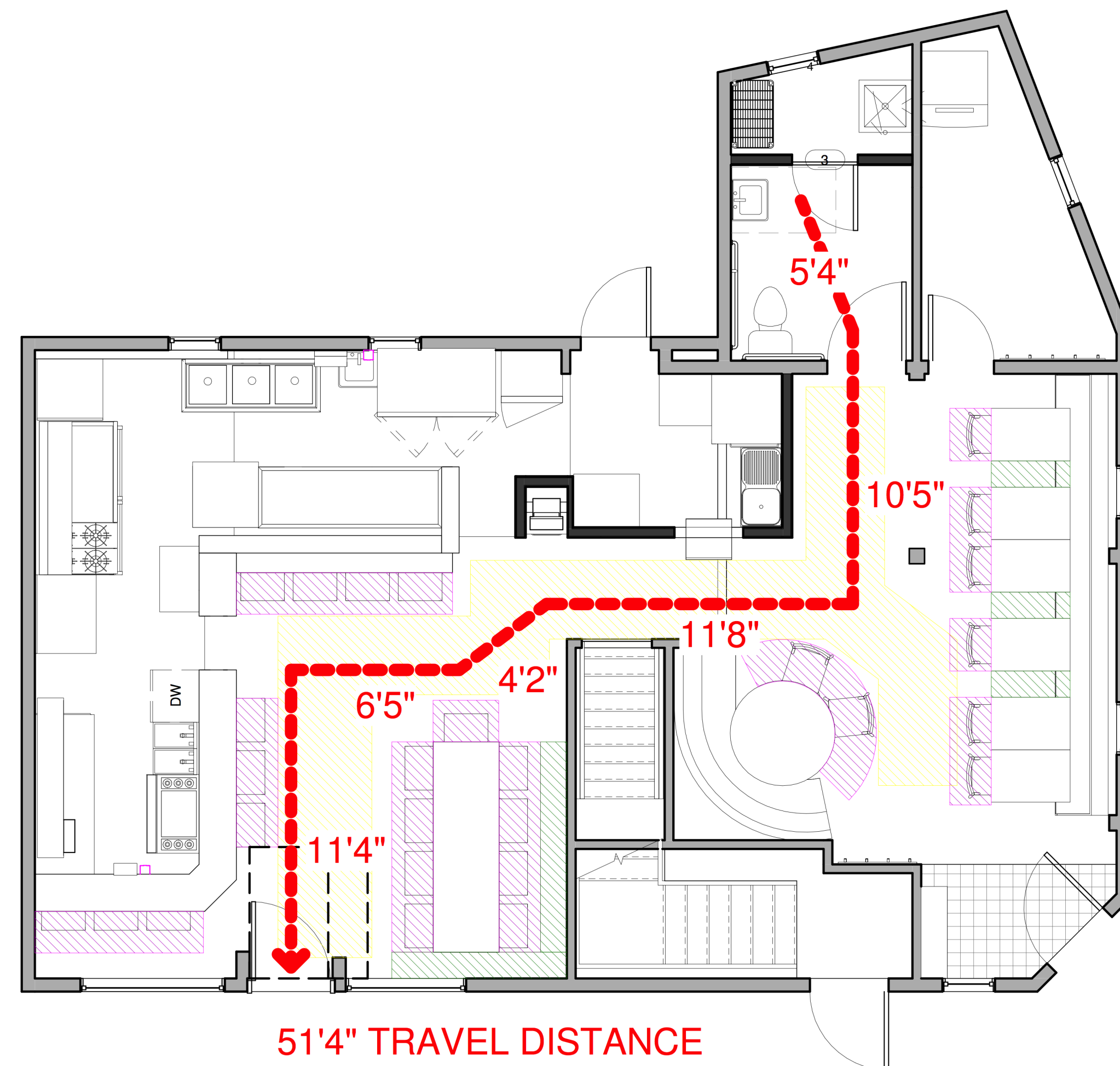
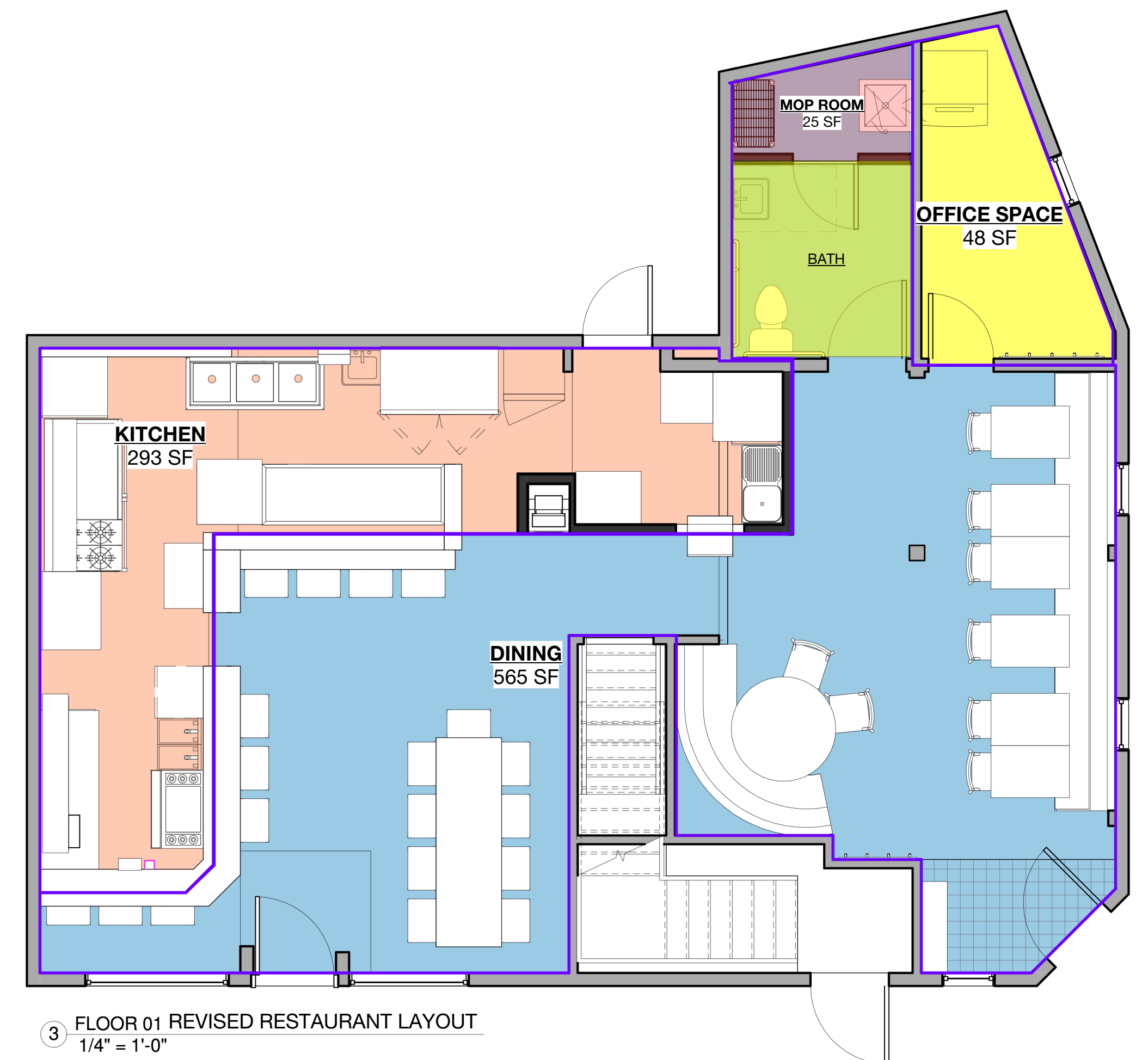


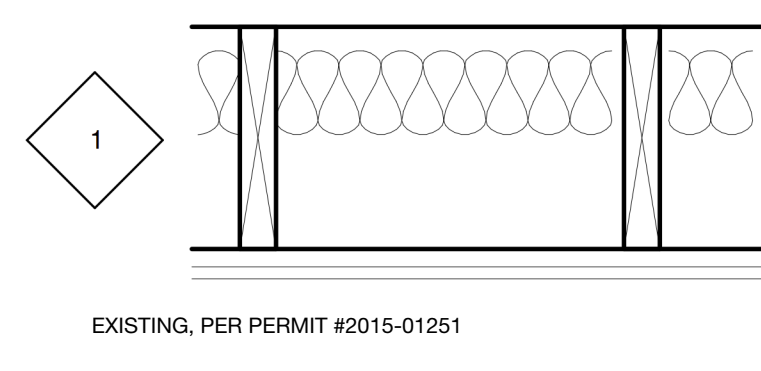
TOP OF WALL DETAIL



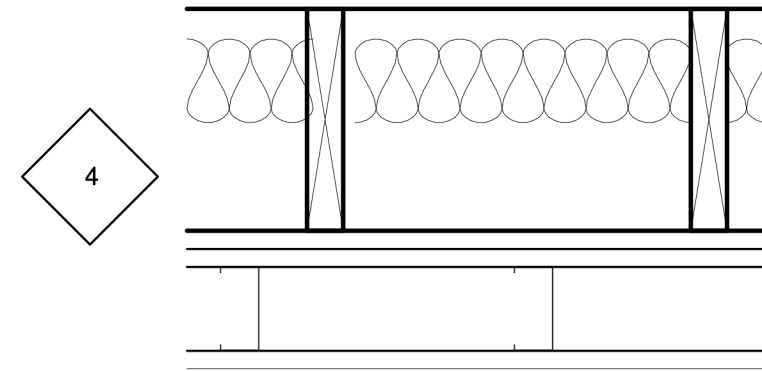
① LIFE SAFETY  
1/4" = 1'-0"



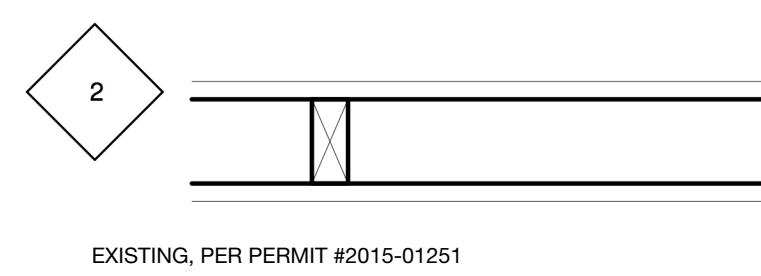
③ FLOOR 01 REVISED RESTAURANT LAYOUT  
1/4" = 1'-0"



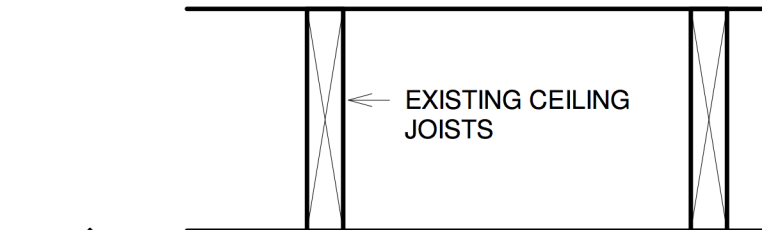
2X10 JOISTS 16" O.C. (EXISTING)  
3" MINERAL WOOL BATT  
RC-1 CHANNEL OR EQUIVALENT  
2 LAYERS 5/8" GWB FIRECODE "X"  
  
REFERENCE 1BC 2009  
TABLE 720.1 (3) #1-1.1



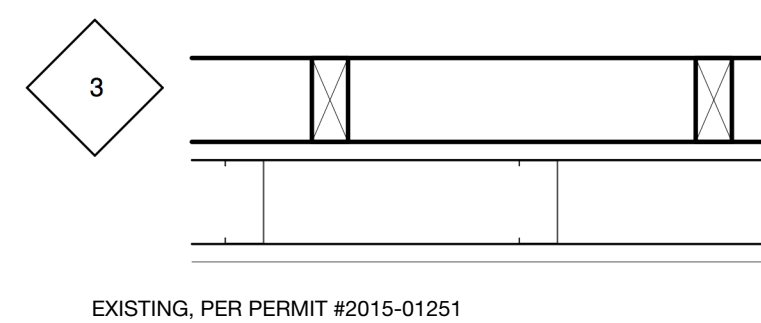
HOOD PREP CEILING  
  
EXISTING 2X10 JOISTS  
3" MINERAL WOOL  
RC-1 OR EQUIVALENT  
DBL 5/8" GWB FIRECODE "X"  
2X4 METAL STUDS  
SINGLE LAYER 5/8" GWB  
  
REFERENCE 1BC 2009  
TABLE 720.1 (3) #1-1.1



EXISTING WALLS ARE PLASTER, PANEL  
AND SINGLE LAYER GWB TO BE LEFT IN  
EXISTING CONDITION. ALL NEW  
PARTITION WALLS TO BE:  
  
2X4 WOOD FRAMING  
SINGLE LAYER 5/8" FIRECODE GWB ON BOTH SIDES

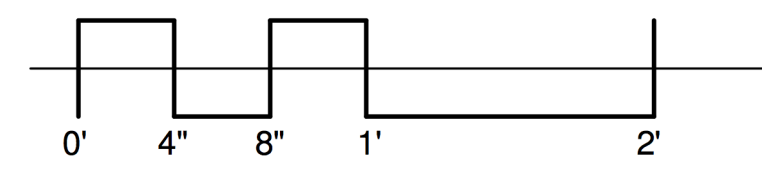


PROPOSED EXPOSED BEAM DETAIL  
  
2X10 EXISTING CEILING JOISTS  
RC-1 OR EQUIVALENT  
DBL 5/8" GWB FIRECODE "X"  
2X4 METAL STUDS  
SINGLE LAYER 5/8" GWB  
  
REFERENCE 1BC 2009  
TABLE 720.1 (3) #1-1.1



ENTIRE KITCHEN WALL TO BE AN  
ADDITIONAL STEEL FRAMED 2X4 WALL IN  
FRONT OF EXISTING WOOD WALL. AS  
SHOWN:  
  
NEW 2X4 METAL STUDS  
SINGLE LAYER 5/8" GWB FIRECODE "X"

REFERENCE 1BC 2009  
TABLE 720.1 (3) #1-1.1



② UL DETAILS  
1 1/2" = 1'-0"

Area Schedule (Gross First Floor)	
Area	
1025 SF	

**LIFE SAFETY CODE STUDY**  
 CBL: 013 - E - 017  
 Book & Page: 30093/02  
 Site: 1960 SF (no change)  
 Built Structure: 3242 SF, total (no change)  
 Zone: B2b (no change)  
 AMENDMENT OF BUILDING PERMIT # 2015-01251  
 Amend permit #2015-01251 for new tenant's restaurant.  
 Suppression System: Kitchen Hood to meet NFPA 96; portable fire extinguishers. (Staff to be trained in extinguisher use.)  
 Detection System: Hard-wired fire, smoke, and carbon monoxide detection.  
 Mixed Use - Separated Occupancies  
 IBC 2009, IEBC 2009, NFPA 1, & NFPA 101  
 Level 2 Alteration at First Floor  
 Existing Construction Type: V-B  
 Existing Fire Hazard: Light\*  
 No change proposed  
 IBC Table 508.4 Required Separation of Occupancies  
 Assembly to Assembly: none required  
 Seating area to Kitchen: none required  
 Assembly to Residential: 2 hour, unsprinklered\*  
 \*No change proposed  
 IBC Table 1004.1.1 & NFPA 101 Table 7.3.1.2  
 Proposed Occupancy Loads  
 Occupancy Type: Assembly Group A-2 (per IBC)  
 Bar & Restaurant 656 SF @ 15sf/person = 38 Occupants  
 Kitchen (Gross) 366 SF @ 200sf/person = 5 Staff  
 Total: 43 Occupants (21M + 22F)  
 Maine State Plumbing Code / Uniform Plumbing Code Table 4-1  
 21 male + 22 female = 1 WC required, 1 lav required  
 ADA accessible  
 Table 1008.1.9.3.2 Panic Hardware  
 Panic hardware not required at main exit of Assembly space when occupancy load is less than or equal to 300, the lock is readily distinguishable as locked, door is marked with signage: "THIS DOOR TO REMAIN UNLOCKED", with this exception revokable by Code Official.  
 Table 1015.1 Spaces with One Exit  
 One egress allowed in Assembly space with Maximum Occupant Load of 49  
 Table 1021.2 Stories with One Exit  
 First Story Assembly space: Maximum 49 occupants and 75' travel distance

AMENDMENT TO PERMIT #2015-01251

PERMIT SET

END OF CODE REVIEW NOTES

	Design Firm <b>RESIDENTIAL DESIGN STUDIO, LLC</b> Carol A. Morrissette 90 Woodford Street Portland, Maine 04103 T. 207.699.4184 C. 207.671.7965	Project Title <b>IZAKAYA MINATO</b> 56 Washington Ave, Portland, Maine 04102	Sheet Status <b>PERMIT SET</b> Project Number 16.20 Date 07/17/16
	Revisions 1 2 3	Sheet Title <b>LIFE SAFETY PLAN</b>	Sheet No. <b>LS1.1</b>