

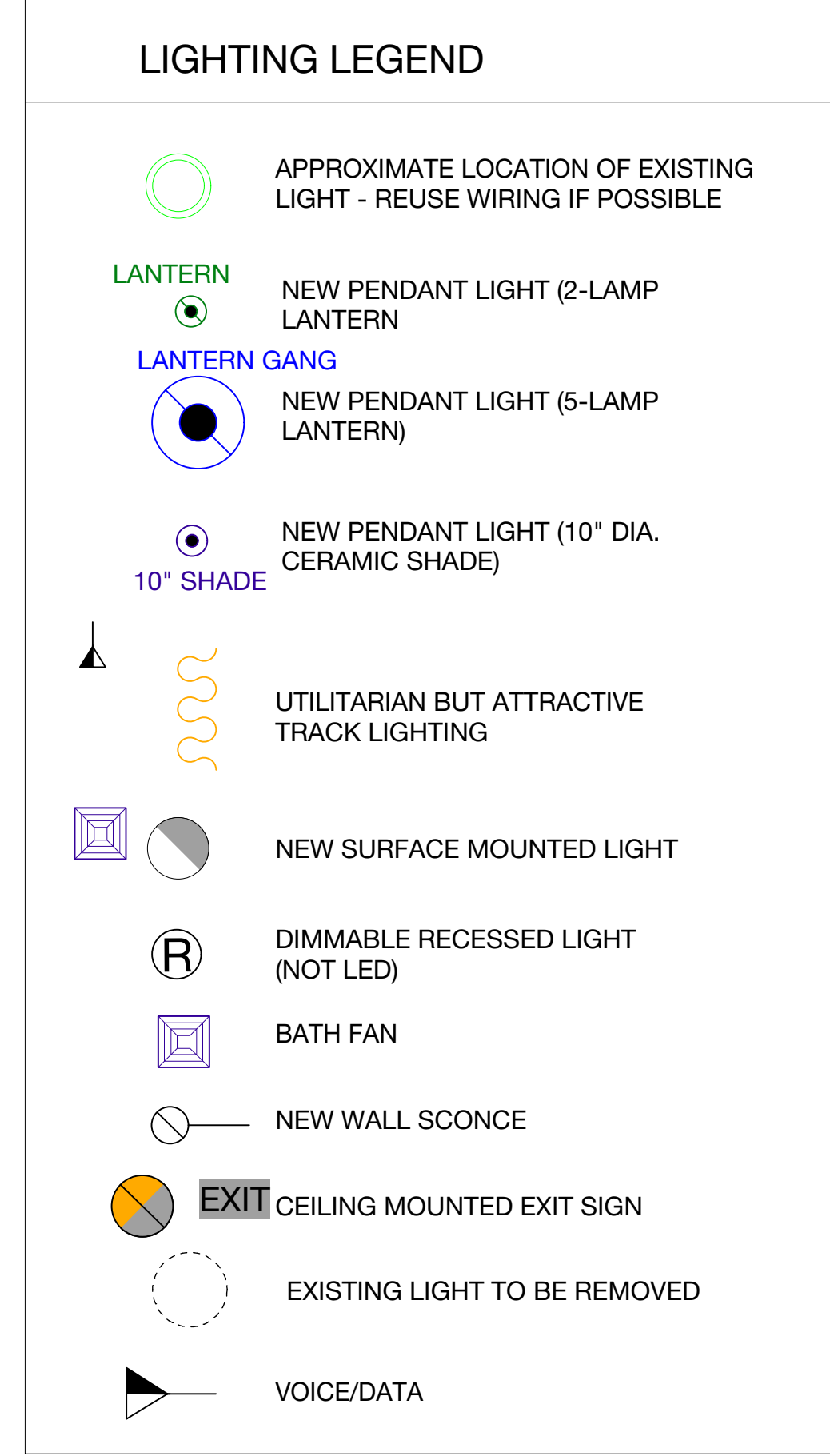


GENERAL ELECTRICAL NOTES

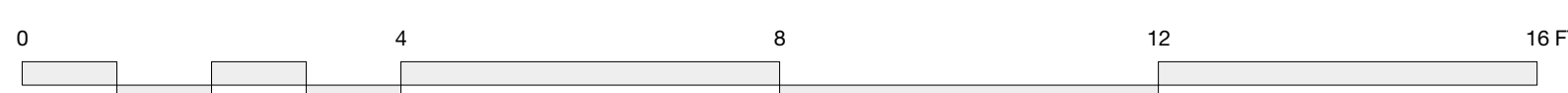
- The scope of the electrical work includes furnishing and installing all electrical work for a complete installation.
- The electrical installation shall meet the standards prescribed by the National Electrical Code and all local amendments, all applicable National Fire Protection Association (NFPA) codes, the Americans With Disabilities Act (ADA), and local and state building codes. Construction shall in general be in accordance with standards and requirements of utilities and authorities having jurisdiction.
- Contractor shall verify that existing panels and feeders serving tenant spaces appear to be adequate for new lighting and power loads shown.
- For each equipment connection, determine and provide the device, outlet or junction box required to connect the equipment. Verify exact locations with architect/owner prior to installations.
- Verify electrical requirements if any for any equipment or appliances shown on plans prior to commencement of work. Provide isolated ground wires as required by equipment manufacturers.
- Seal all penetrations through corridor and other rated partitions as required to maintain required partition U.L. fire rating. Coordinate with architectural as needed.
- Electrical contractor shall provide as part of this contract legible labeling of all breakers on panel board with typewritten or plastic embossed label.
- All power devices, light switches, outlets, power poles, and communication cover plates as applicable shall be 'WHITE'. Upgrade existing devices to match. Label all devices with voltage, circuit and panel designations on outside of plate.

GENERAL MECHANICAL & ELECTRICAL NOTES

- Verify all locations of air devices and ceiling equipment. Coordinate with general contractor, other trades, and architect/engineer to avoid conflicts (e.g. With lights, smoke detectors, borders of ceiling height/ type changes, etc.)
- The directive, if any, of the building official shall take precedence over this drawing regarding location and number of exit lights and AV fire alarm enunciators.
- Contractor shall relocate/re-install existing fixtures as shown and shall re-install any existing fixtures removed to accomplish other portions of the work.
- Lighting layouts shown are intended to indicate desired fixture locations and switching and are based on existing facilities drawings for circuiting. Lighting installer shall make a thorough confirmation of all existing conditions before bidding work. Lighting shall be installed and circuted in full accordance with the NEC by a licensed electrician.
- As a minimum, all work shall conform to established building standards and base building specifications and standards, and to codes/standards of the City of Portland.
- Properly seal any penetrations through fire and/or smoke rated partitions with U.L. approved methods and materials.
- New sprinkler locations where shown are approximate and shall be reviewed by City of Portland certified sprinkler installer for final sprinkler configuration. All sprinkler work shall be done by a City of Portland certified installer, who shall also prepare any certified plans or documentation required by the City of Portland per NFPA 96.
- Unless otherwise indicated, mount thermostats at 48" a.f.f. to center line.



1 REFLECTED CEILING PLAN
Scale: 1/2" = 1'-0"



PROGRESS SET

	Design Firm RESIDENTIAL DESIGN STUDIO, LLC Carol A. Morrisette 21 Chestnut Street, Suite 506 Portland, Maine 04101 T 207.699.4184 C 207.671.7965	Project Title IZAKAYA MINATO 56 WASHINGTON AVENUE PORTLANDX, MAINE	Sheet Status PROGRESS SET	
	Revisions 1 2 3	Project Number PROJECT NUMBER	Date 23 SEPTEMBER 2016	Drawn By CAM
	Sheet Title REFLECTED CEILING PLAN	Sheet Scale 1/4" = 1'-0" UNO	Sheet No. E1.1	CAD File Number IZAKAYA MINATO