

6 Oxford st

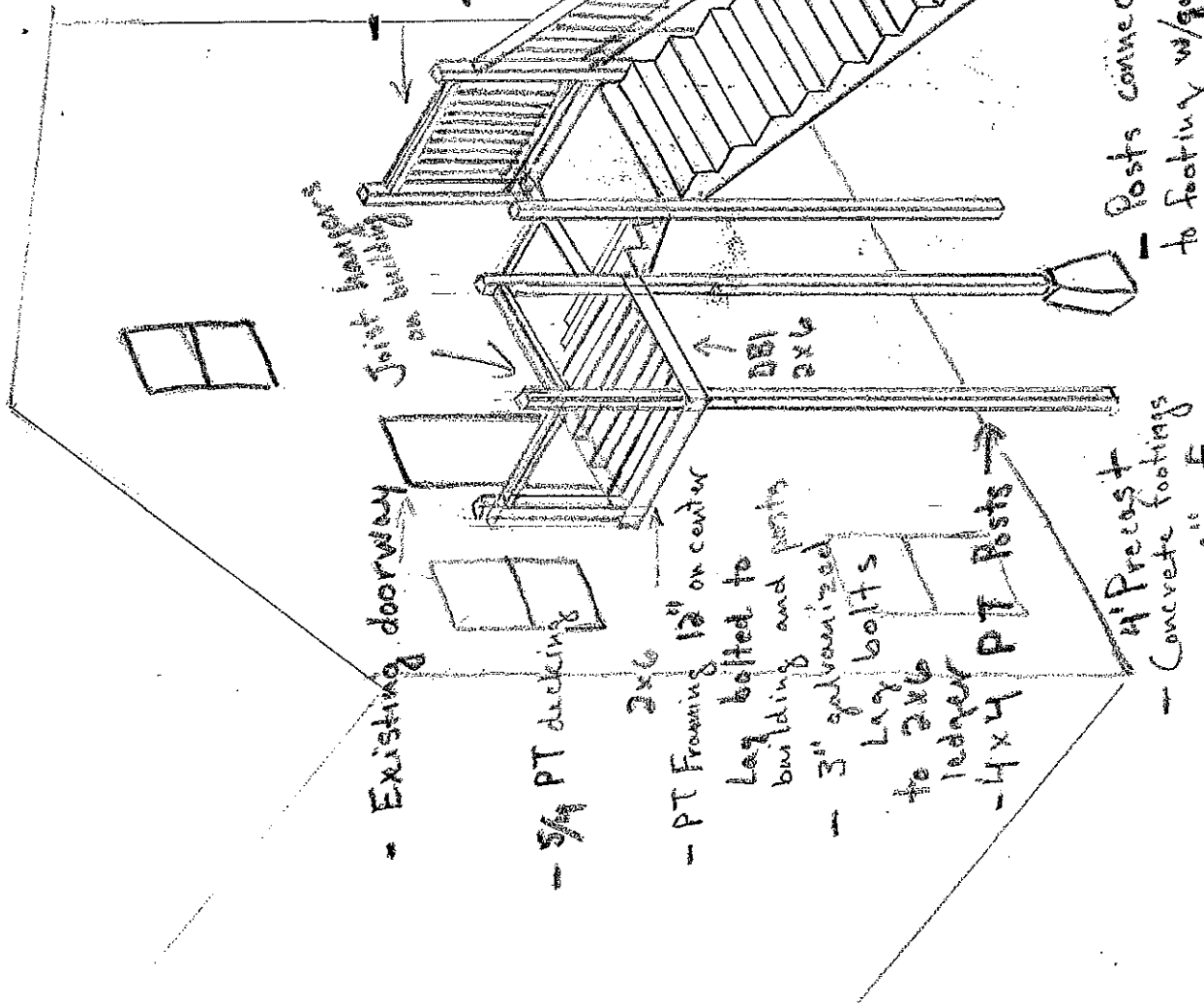
Scale  $\frac{1}{4}'' = 1'$   
 Stairs are being built on exact footprint of previous stairs

- 2x4 PT
- Railing 36" from decking (both sides)
- 2x4 PT
- Subrail 4" from decking
- 2x2 PT Ballisters not more than 4" apart

3 - 2x12 PT  
 - Stringers

2x12 PT  
 - Treads  
 -  $7\frac{3}{4}$  Risers

- Triangular opening not to allow a 6" sphere



- Existing doorway
- 5/4 PT decking
- PT Framing 12" on center
- Lag bolted to building and posts
- 3" galvanized Lag bolts to 2x6 ledger
- 4x4 PT Posts
- 4" Precast Concrete footings on 6" of 3/4" Crushed stone
- Posts connected to footing w/galvanized Simpson post bases
- Joint bearing on building
- 2x6 DBI 2x6
- Posts connected to footing w/galvanized Simpson post bases