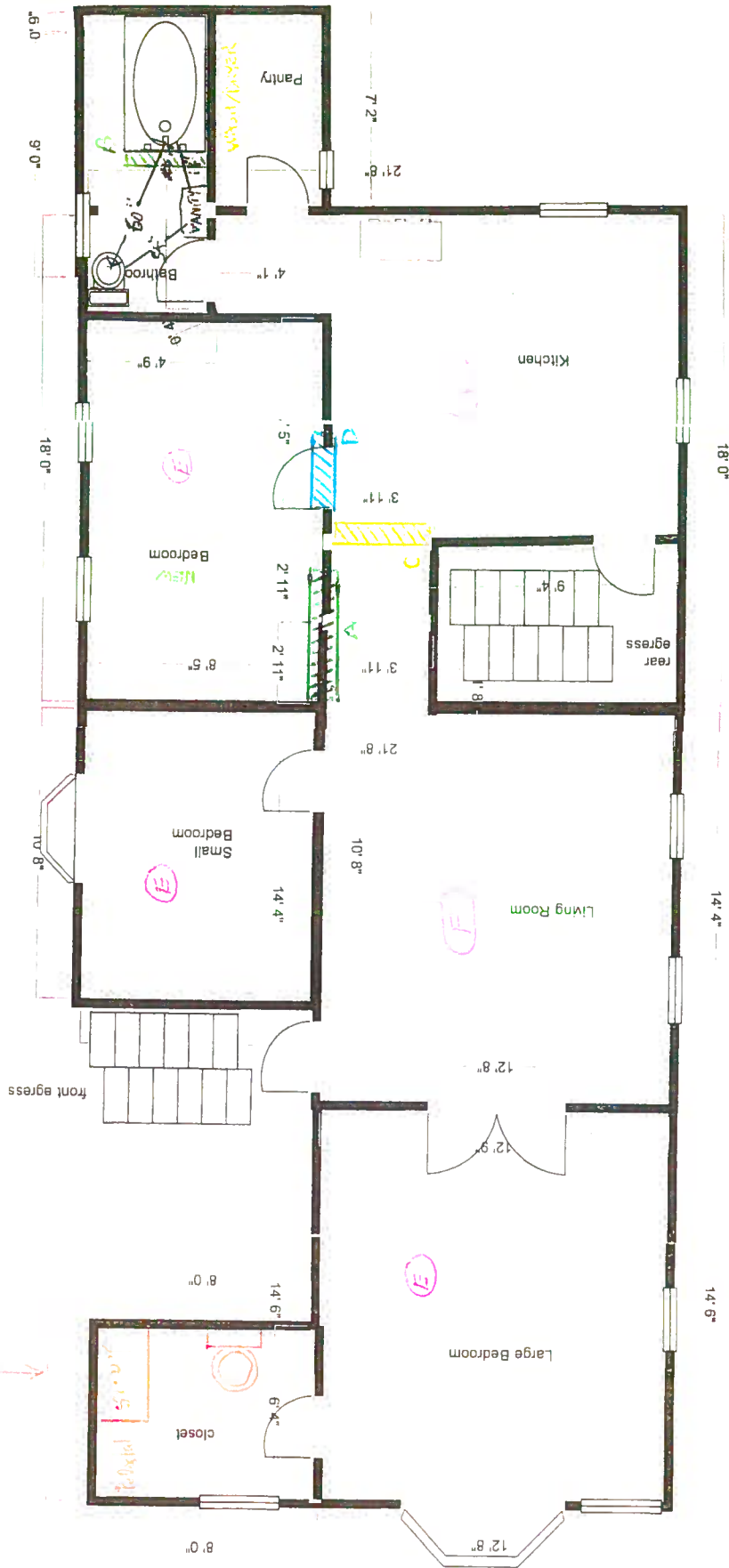


Proposed Alteration:
 Dining Room converted to 3rd Bedroom

New Bathrooms



A - New bedroom wall framed out to close in New bedroom and provide anchor for elec. panel.

B - Replace top wall framing.

C - New header where stud removed.

D - Replace door to open inward.

Wall coverings

Ceiling: 5/8" Sheetrock
 Walls: 1/2" Sheetrock

E - Smoke Detectors
 Hand mounted, 5'6" Sheetrock, 1/2" Sheetrock