

Rachel Conly Design LLC
 115 Island Ave.
 Peaks Island, Maine 04108
 207.766.5625
 www.rachelconlydesign.com

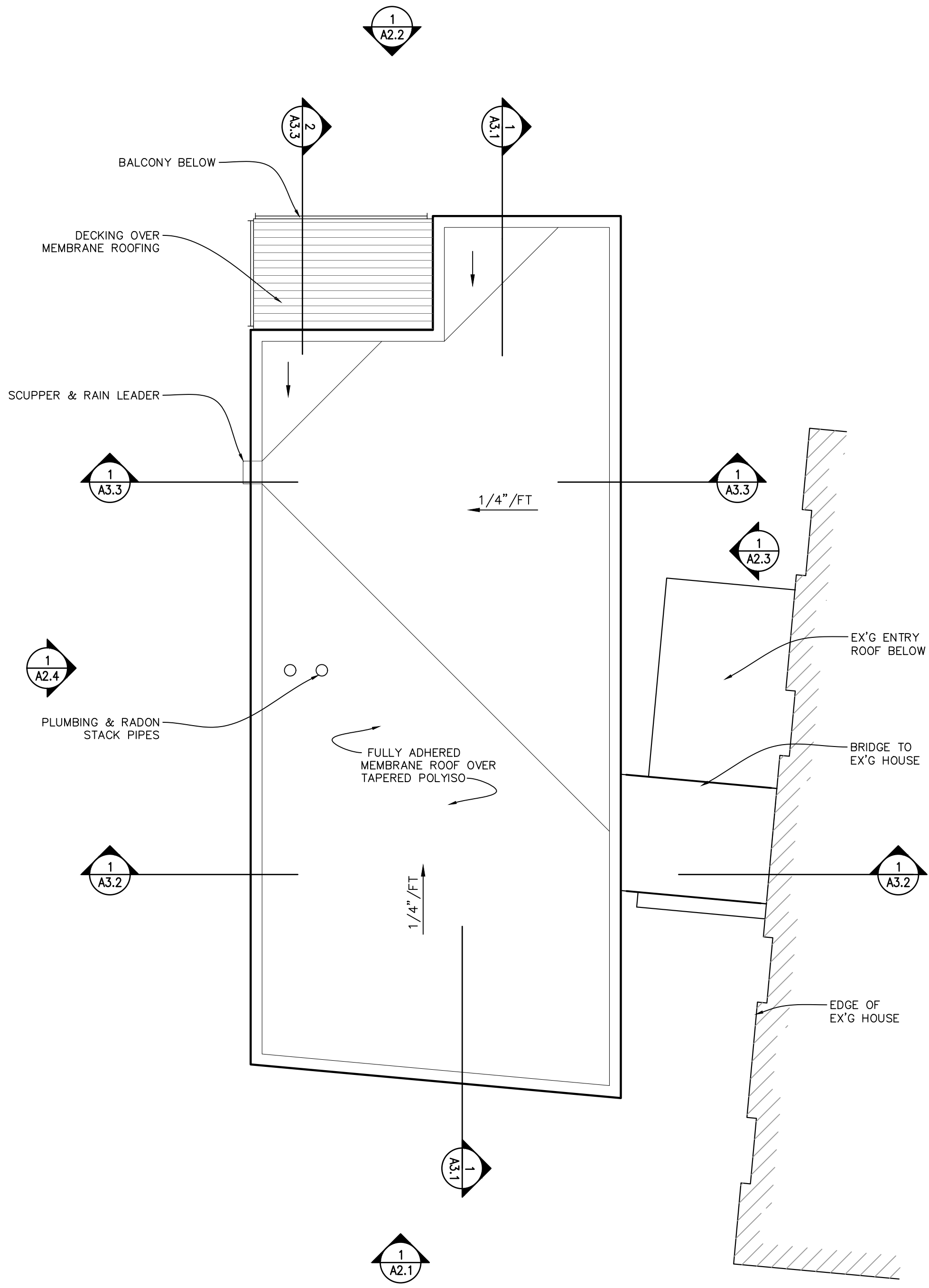
DATE	NOTES
2018.01.29	PERMIT
	REVISED



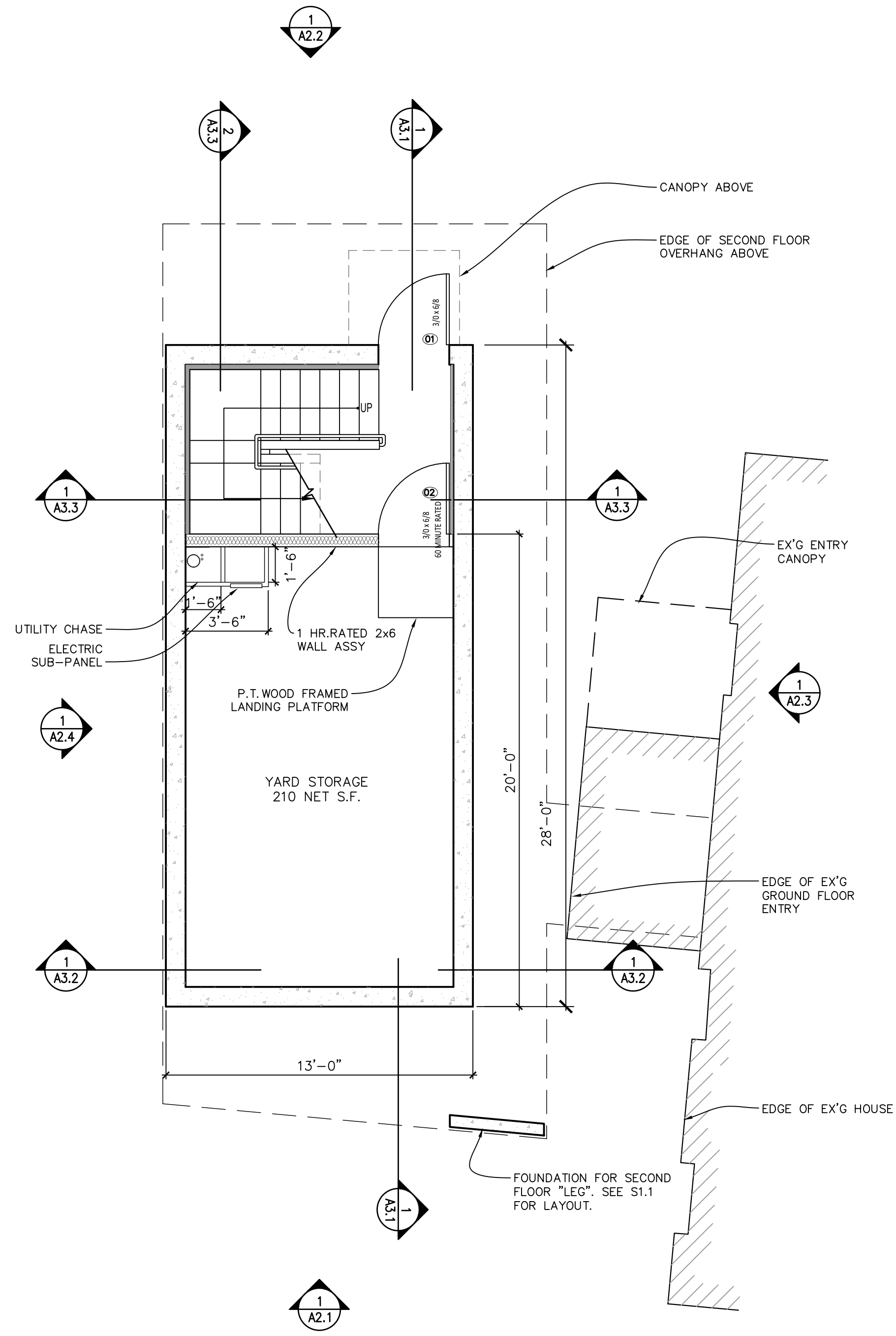
PROJECT
Phase-II Renovations
123 Cumberland Ave.
Portland, ME 04101

**BASEMENT &
 ROOF PLANS**

A1.0



2 ROOF PLAN
 1/4"=1'-0"



- FLOOR PLAN NOTES**
- EXTERIOR DIMENSIONS TO FACE OF FRAMING
 - INTERIOR DIMENSIONS TO FINISH FACE OF WALL
 - DIMENSIONS TO CENTERLINE OF DOORS & WINDOWS.
 - CLOSETS 2'-0" CLEAR INSIDE DEPTH, TYP.
 - DOOR HINGE JAMB 4" FROM CORNER, TYP. U.N.O.

1 BASEMENT FLOOR PLAN
 1/4"=1'-0"

