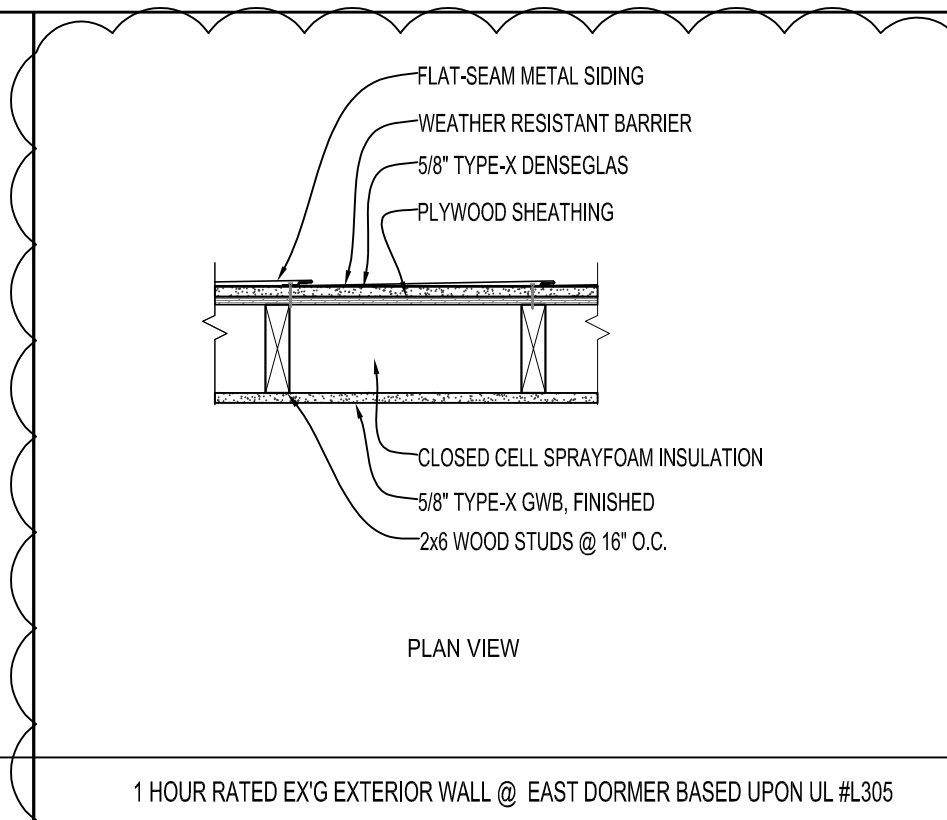


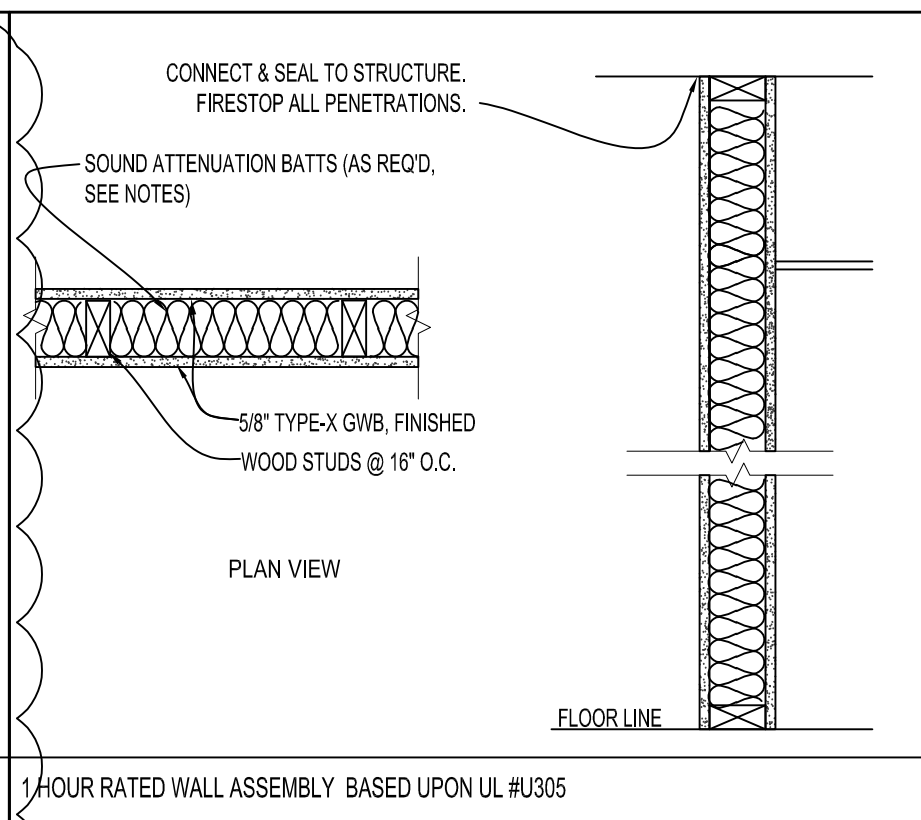
1 HOUR RATED FLOOR/CEILING ASSEMBLY BASED UPON UL #L512

6 60 MIN FLOOR/CEILING ASSY
1"=1'-0"



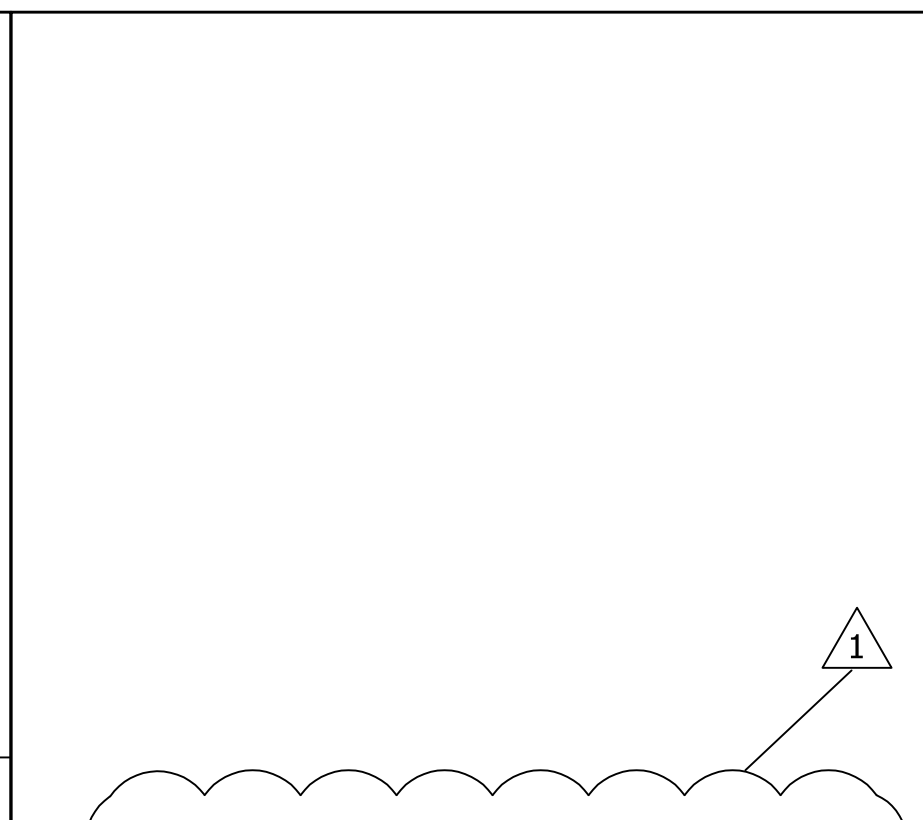
1 HOUR RATED EX'G EXTERIOR WALL @ EAST DORMER BASED UPON UL #L305

5 60 MIN EXTERIOR WALL ASSY
1"=1'-0"

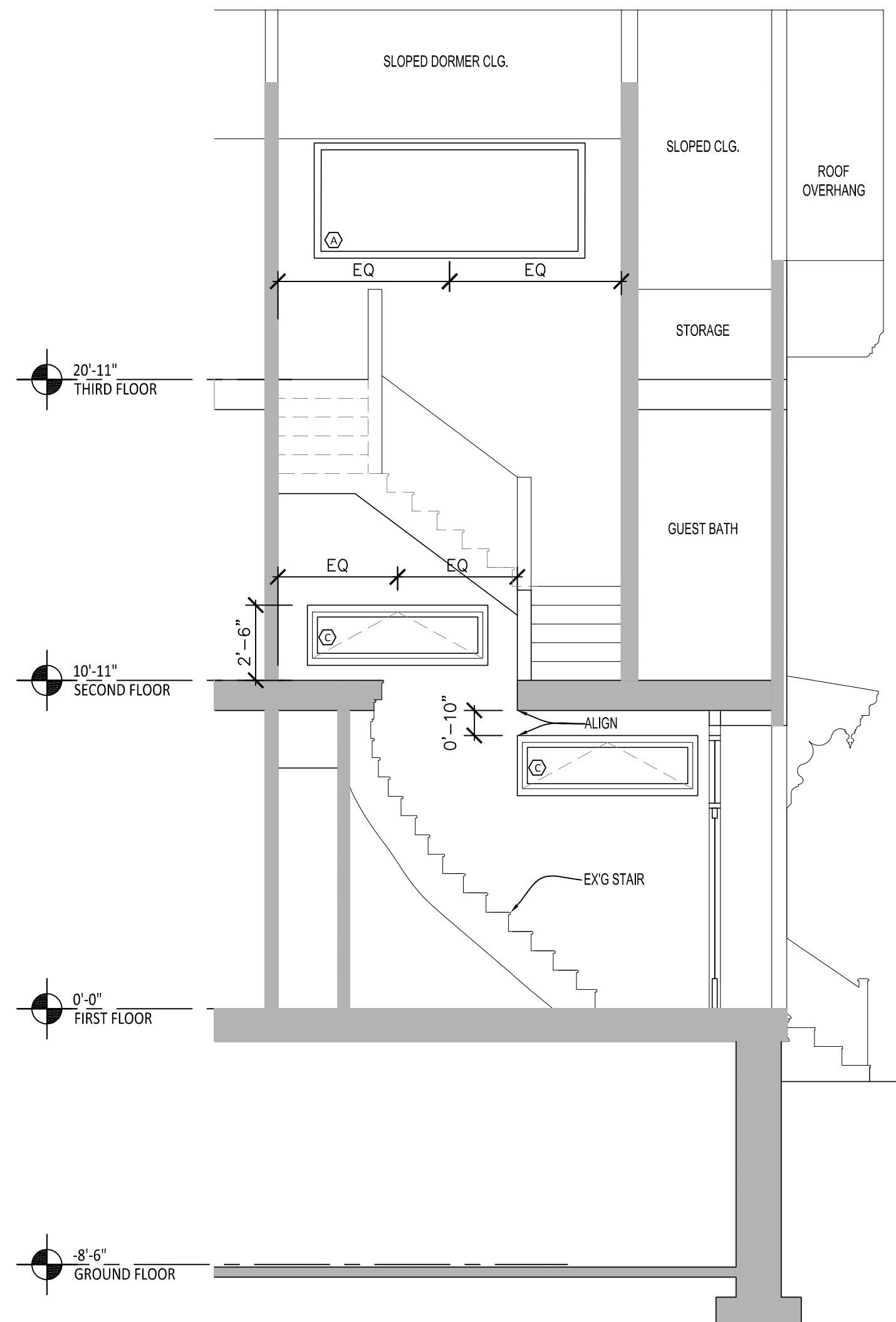


1 HOUR RATED WALL ASSEMBLY BASED UPON UL #U305

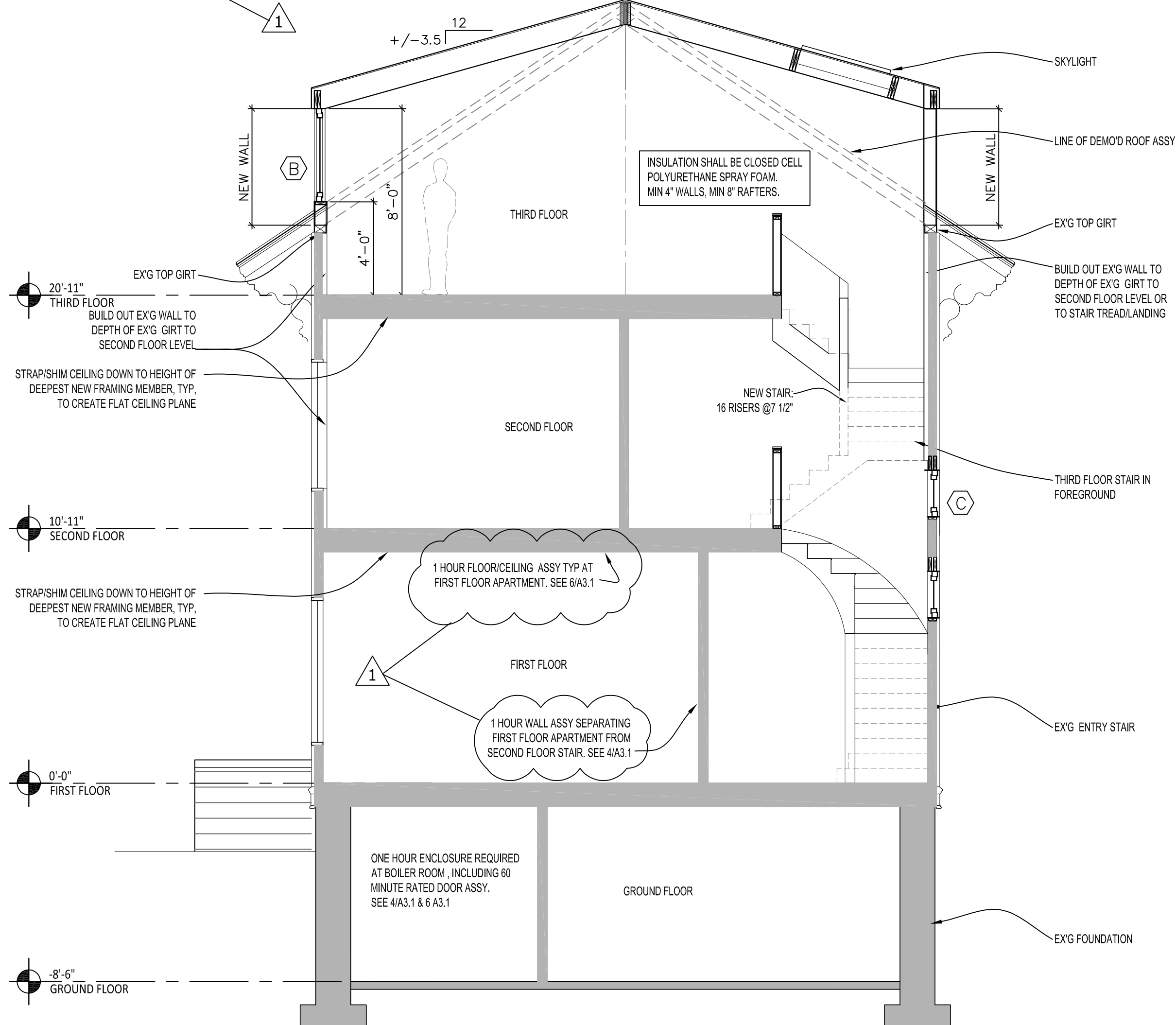
4 60 MIN WALL ASSY
1"=1'-0"



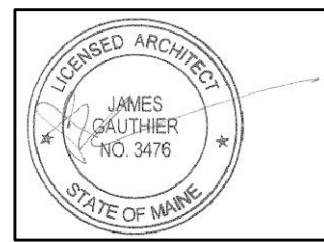
3 NOT USED



2 SECTION AT STAIR
1/4"=1'-0"



1 CROSS SECTION
1/4"=1'-0"



Rachel Conly Design LLC
26 Sterling Street
Peaks Island, Maine 04108
207.766.5625
www.rachelconlydesign.com

DATE	NOTES
2018.03.01	Issued for Permit
2018.04.16	1 Addendum #1, code updates per city request

PROJECT
**Renovations to
123 Cumberland Ave.
Portland, ME 04101
Phase I**

BUILDING SECTIONS
A3.1