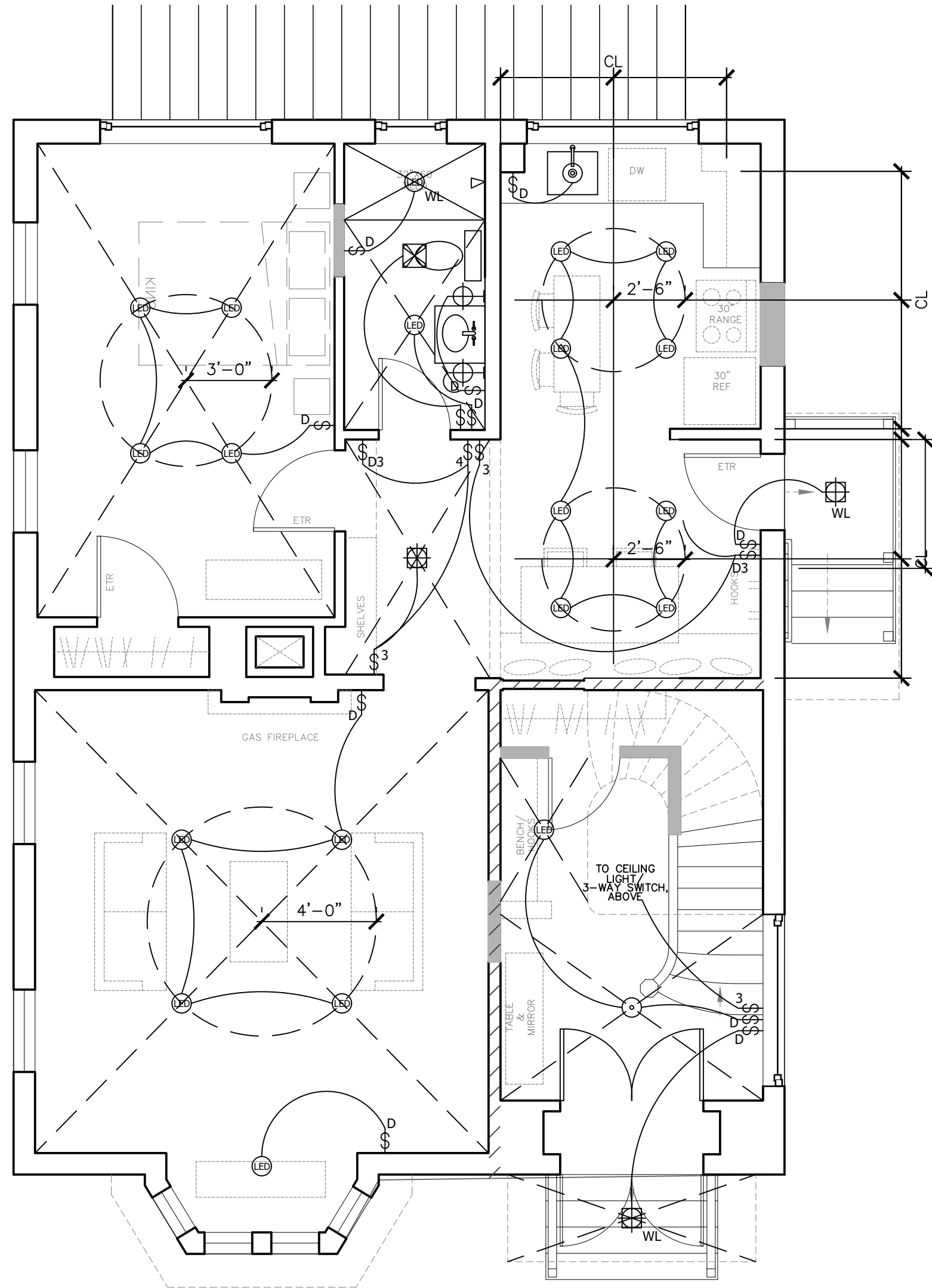
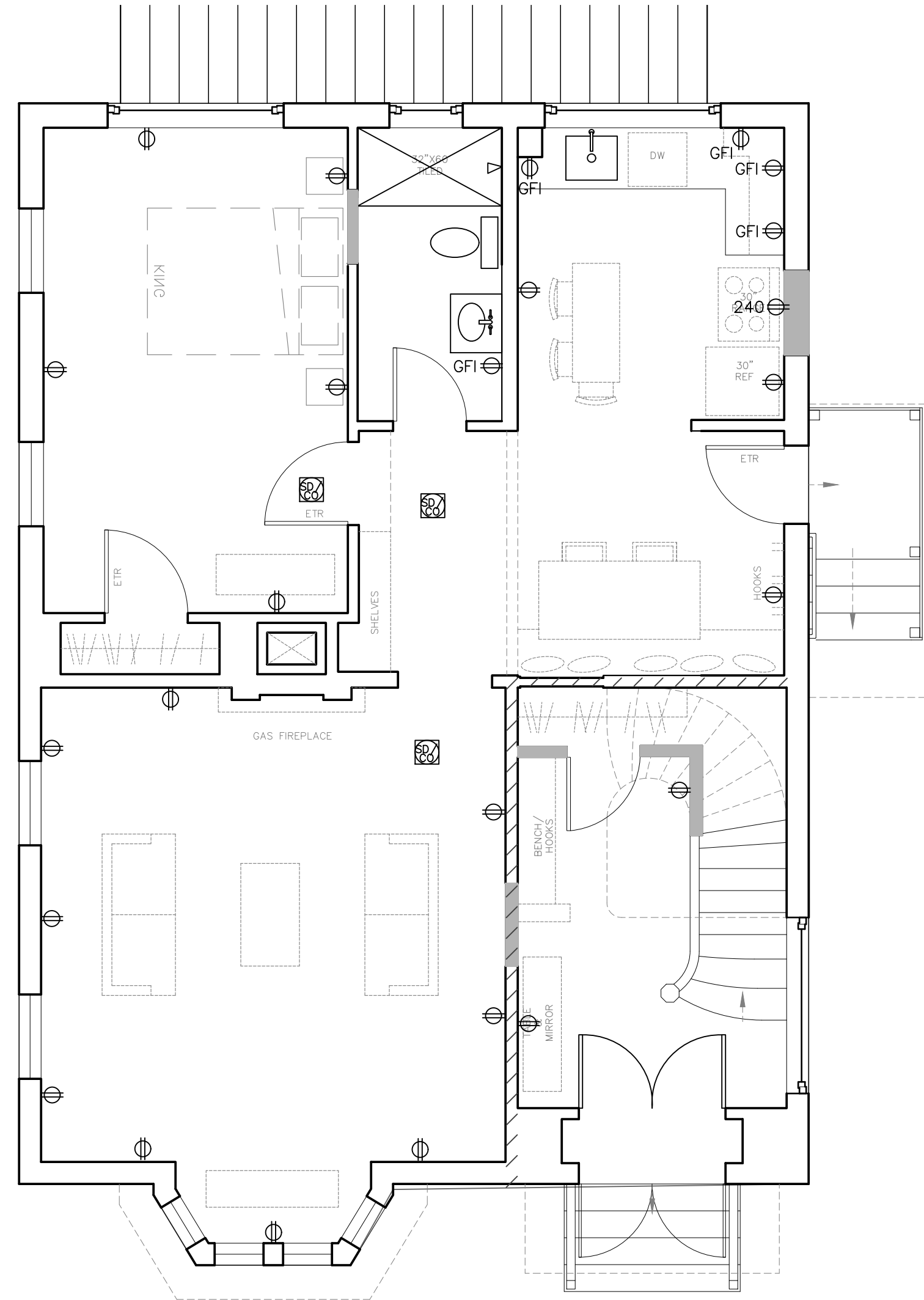


	DUPLEX RECEPTACLE		3-WAY SWITCH		LOW PROFILE WALL SCONCE LIGHT FIXTURE		WET LOCATION WALL SCONCE LIGHT FIXTURE		RECESSED CAN LIGHT FIXTURE		UNDER-COUNTER LIGHTS		CEILING FAN WITH INTEGRAL LIGHT		PHONE JACK
	GROUND FAULT CIRCUIT INTERRUPTER		DIMMER SWITCH		RECESSED "STAIR RISER" LIGHT FIXTURE		CEILING MOUNT LIGHT FIXTURE		COMPACT FLUORESCENT RECESSED CAN LIGHT		TRACK LIGHTING		CEILING FAN		DSL JACK
	240 V		SMOKE DETECTOR		WALL SCONCE LIGHT FIXTURE		EXTERIOR FLOOD LIGHT LIGHT FIXTURE		LED RECESSED CAN LIGHT		LOCALLY SWITCHED CLOSET RATED LIGHT		MINIMUM 50 CFM VENT FAN		CABLE JACK
	SWITCH		CARBON MONOXIDE DETECTOR						LOCALLY SWITCHED READING LIGHT		PENDANT LIGHT FIXTURE		CAT 5 JACK		CENTRAL VACUUM PORT

3 ELECTRICAL LEGEND
N.T.S.



1 FIRST FLOOR LIGHTING PLAN
1/4"=1'-0"



1 FIRST FLOOR POWER PLAN
1/4"=1'-0"

ELECTRICAL PLAN NOTES

- ELECTRICAL POWER & LIGHTING PLANS WERE NOT CREATED BY LICENSED PROFESSIONAL ELECTRICAL ENGINEER.
- THEY ARE FOR CLIENT USE AS DESIGN GUIDANCE ONLY.
- LICENSED ELECTRICIAN RESPONSIBLE TO ENSURE THAT ALL INSTALLATIONS MEET CURRENT CODE REQUIREMENTS.

DATE	NOTES
2018.03.01	Issued for Permit



PROJECT
Renovations to
123 Cumberland Ave.
Portland, ME 04101
Phase I

**FIRST FLOOR
ELECTRICAL
LAYOUT PLANS**

E1.1

Rachel Conly Design LLC
26 Sterling Street
Peaks Island, Maine 04108
207.766.5625
www.rachelconlydesign.com