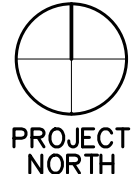


Rachel Conly Design LLC  
 26 Sterling Street  
 Peaks Island, Maine 04108  
 207.766.5625  
 www.rachelconlydesign.com

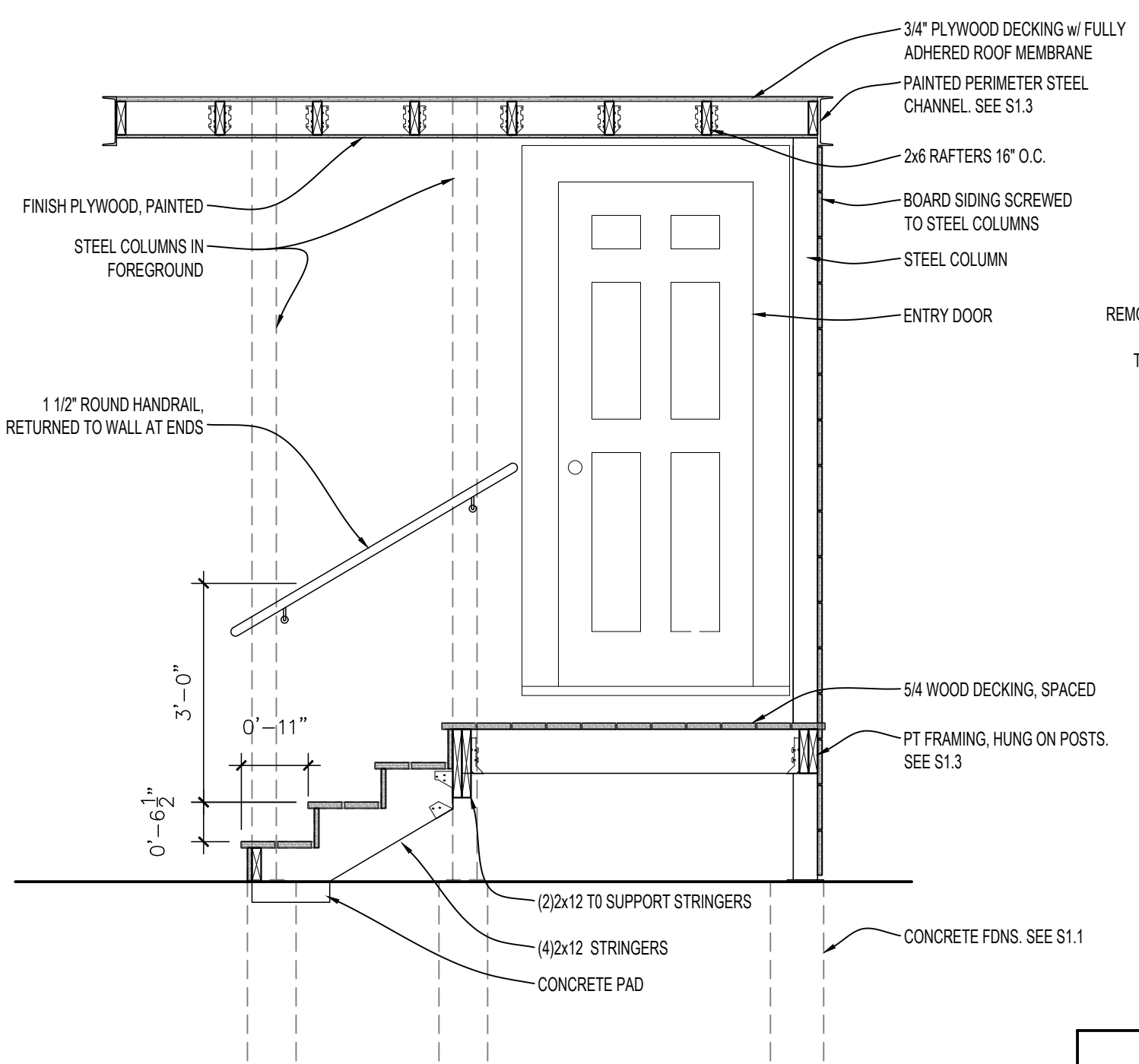
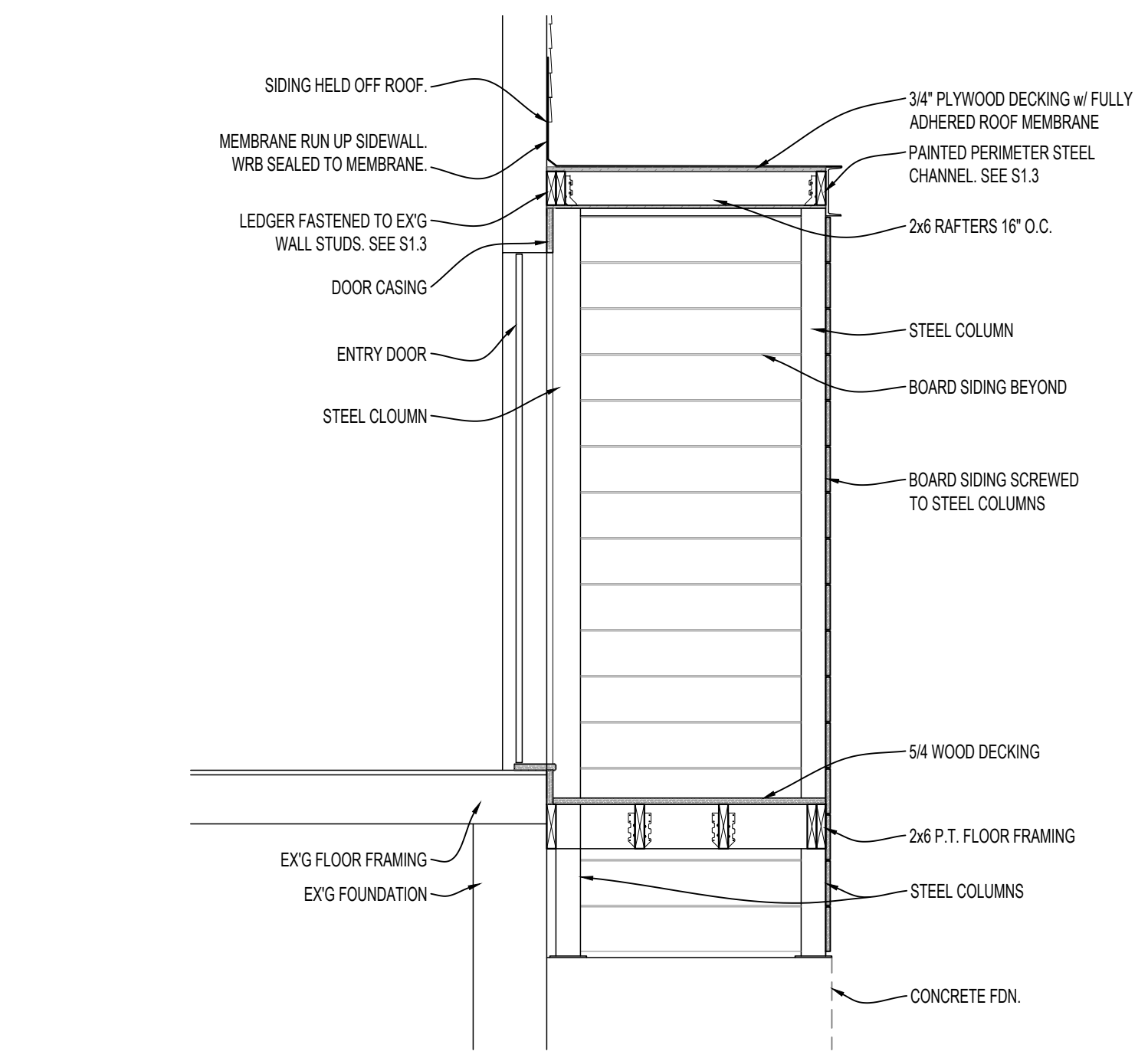
DATE	NOTES
2018.03.01	Issued for Permit



PROJECT  
**Renovations to  
 123 Cumberland Ave.  
 Portland, ME 04101  
 Phase I**

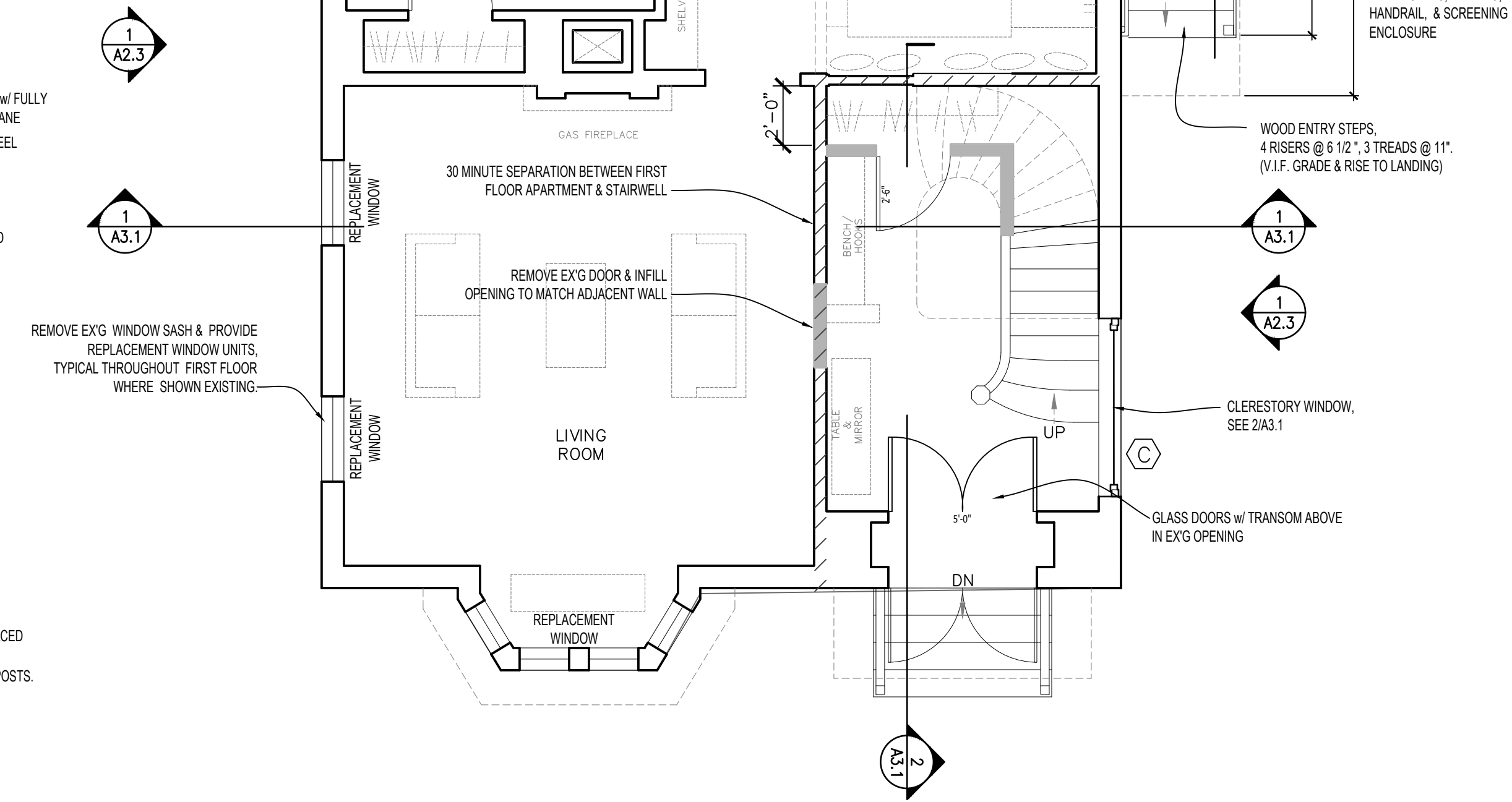
FIRST FLOOR PLAN

**A1.1**



- FLOOR PLAN NOTES**
- DIMENSIONS TO FINISH FACE OF WALL & CENTERLINE OF DOORS & WINDOWS.
  - CLOSETS 2'-0" CLEAR INSIDE DEPTH, TYP.
  - DOOR HINGE JAMB 4" FROM CORNER, TYP, U.N.O.

- PARTITION TYPES KEY**
- EXISTING TO DEMO
  - EXISTING TO REMAIN
  - ▬ NEW PARTITION
  - ▨ NEW 1 HR ASSEMBLY
  - ▩ NEW 1/2 HR ASSEMBLY



**1 FIRST FLOOR PLAN**  
 1/4" = 1'-0"