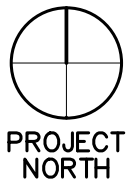


Rachel Conly Design LLC  
 26 Sterling Street  
 Peaks Island, Maine 04108  
 207.766.5625  
 www.rachelconlydesign.com

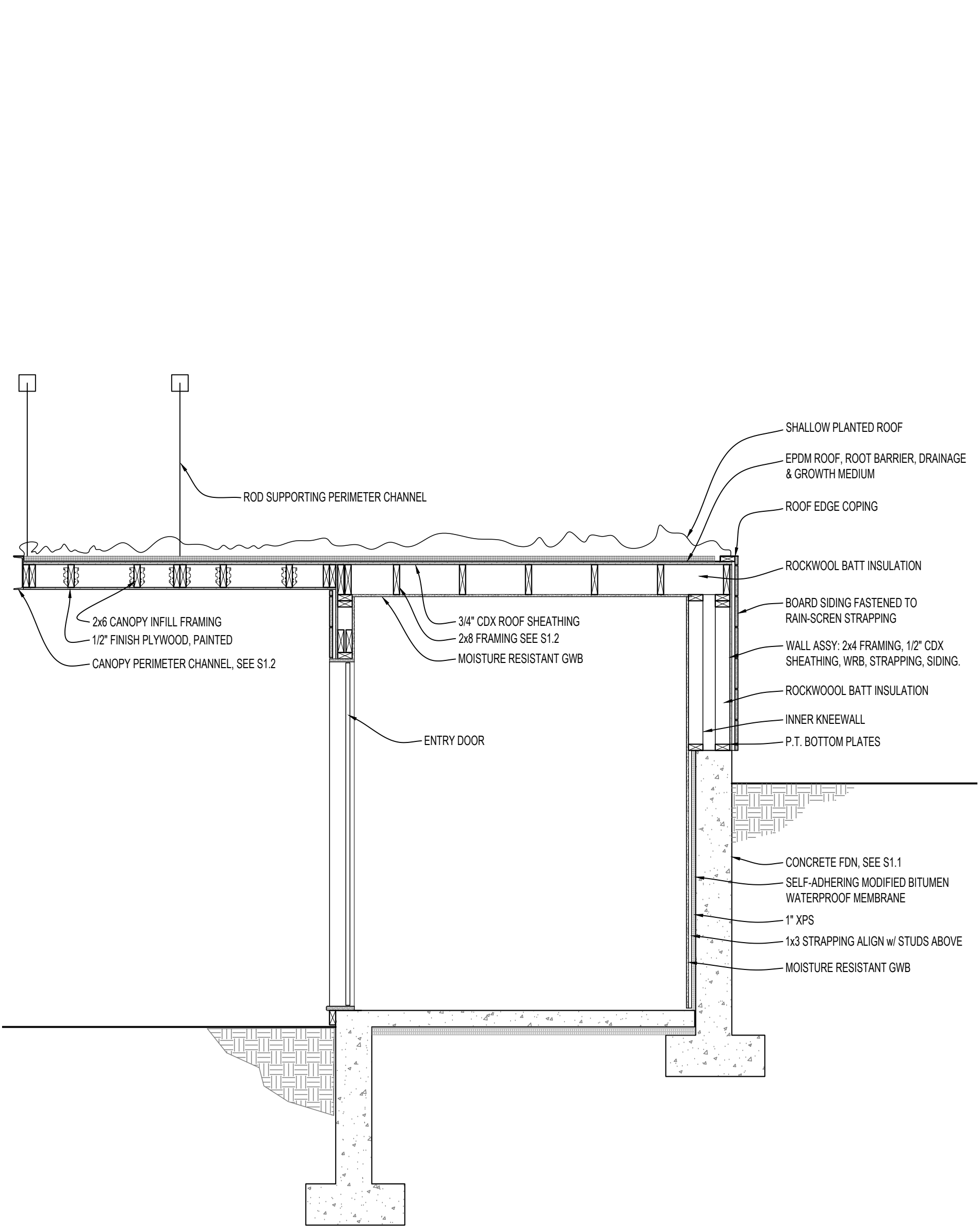
DATE	NOTES
2018.03.01	Issued for Permit



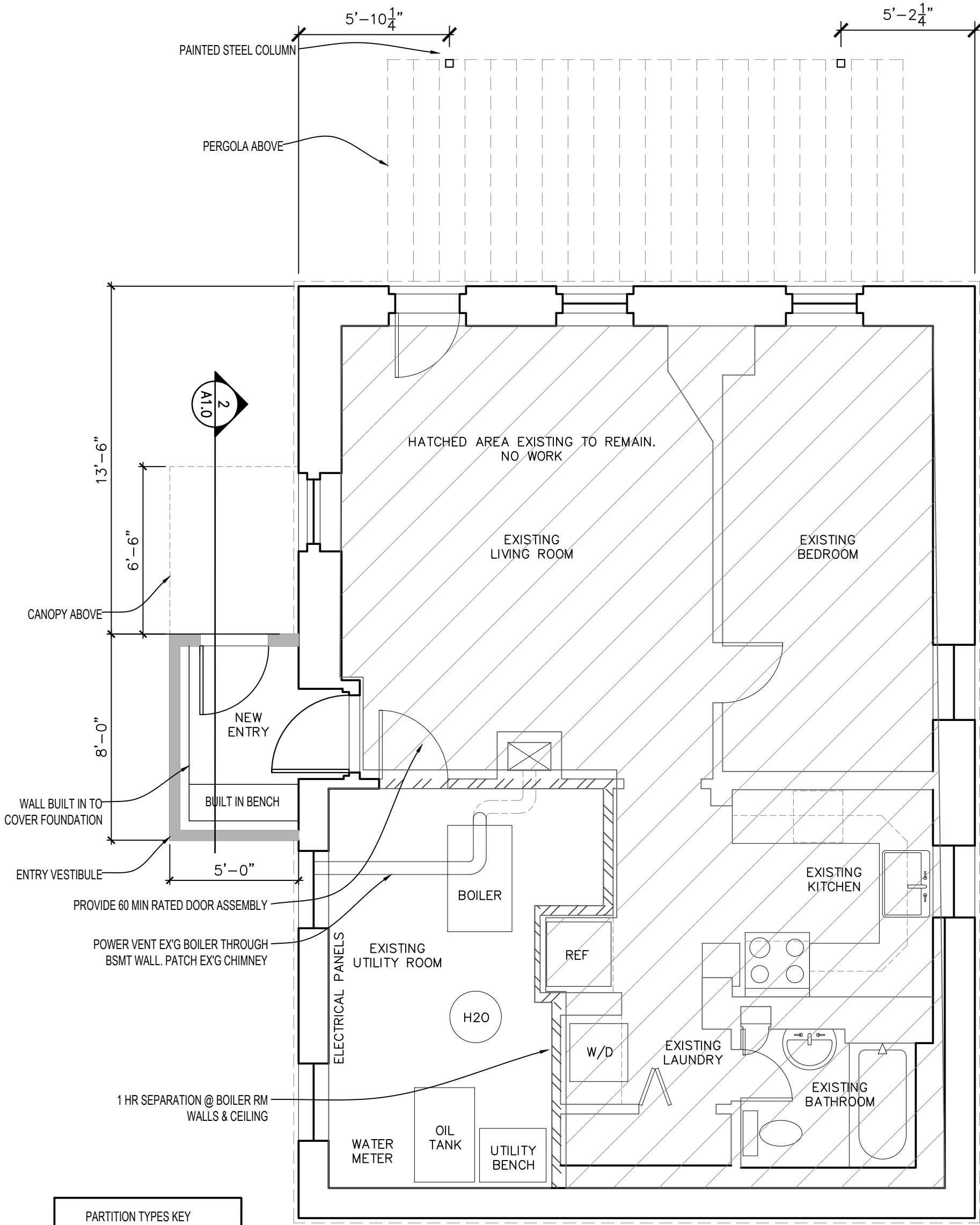
PROJECT  
**Renovations to  
 123 Cumberland Ave.  
 Portland, ME 04101  
 Phase I**

GROUND  
 FLOOR  
 PLAN

**A1.0**



2 ENTRY NORTH/SOUTH SECTION  
 1/2"=1'-0"



PARTITION TYPES KEY

	EXISTING TO DEMO
	EXISTING TO REMAIN
	NEW PARTITION
	NEW 1 HR ASSEMBLY
	NEW 1/2 HR ASSEMBLY

1 GROUND FLOOR PLAN  
 1/4"=1'-0"