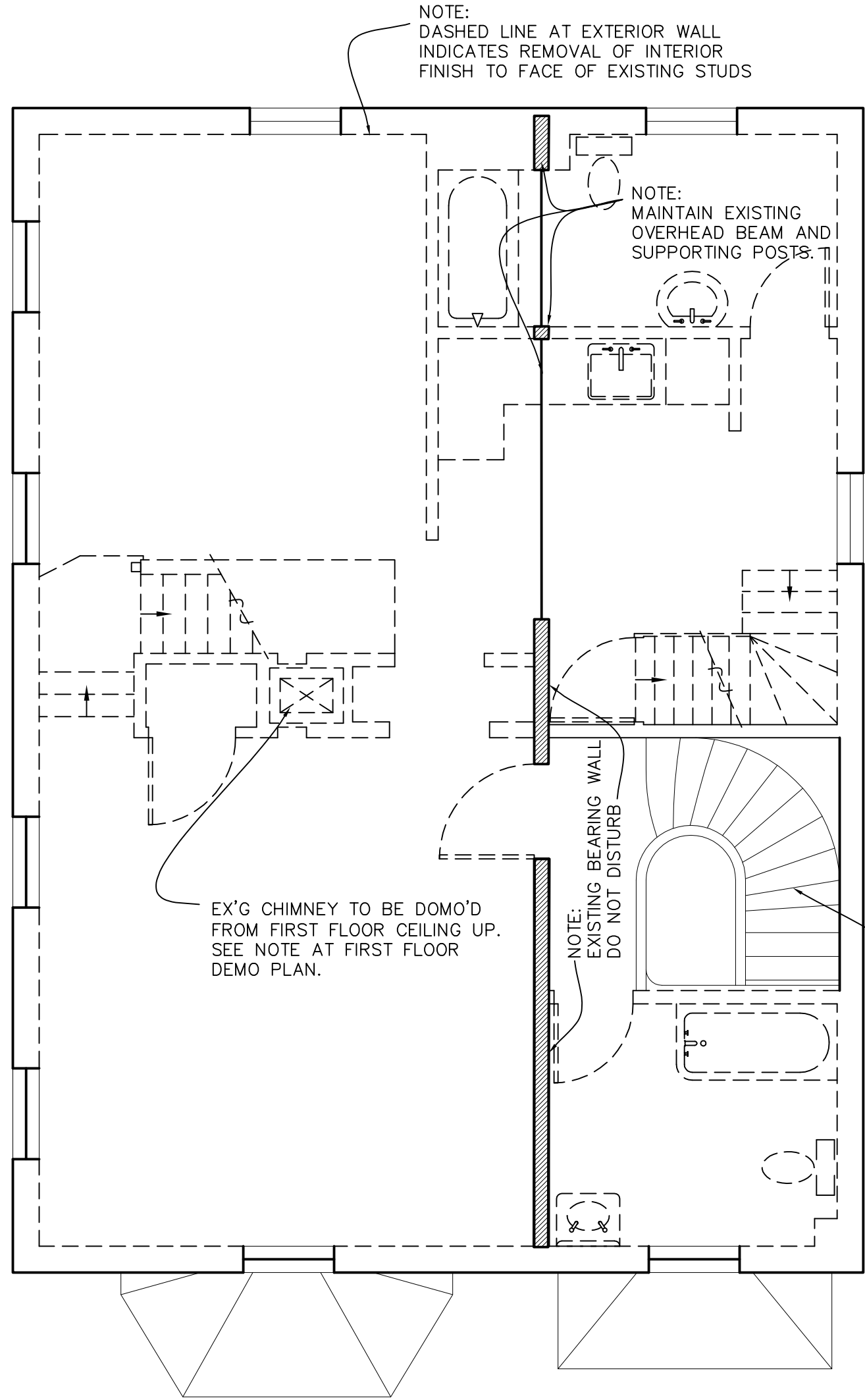


NOTE:
DASHED LINE AT EXTERIOR WALL
INDICATES REMOVAL OF INTERIOR
FINISH TO FACE OF EXISTING STUDS



NOTE:
DASHED LINE AT EXTERIOR WALL
INDICATES REMOVAL OF INTERIOR
FINISH TO FACE OF EXISTING STUDS

NOTE:
MAINTAIN EXISTING
OVERHEAD BEAM AND
SUPPORTING POSTS.

EX'G CHIMNEY TO BE DEMO'D
FROM FIRST FLOOR CEILING UP.
SEE NOTE AT FIRST FLOOR
DEMO PLAN.

NOTE:
EXISTING BEARING WALL
DO NOT DISTURB

EX'G MAIN
STAIR TO
REMAIN

PARTITION TYPES KEY

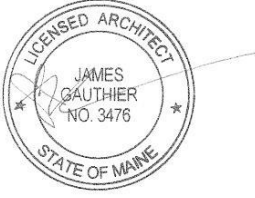
	EXISTING TO DEMO
	EXISTING BEARING
	EXISTING TO REMAIN
	NEW PARTITION

- NOTE:
- DEMO INTERIOR FINISH OF EXTERIOR WALL TO INSIDE FACE OF STUDS, TYP. AT 2ND & 3RD FLOOR.
 - DEMO CEILING FINISH TO FRAMING, TYP. 2ND & 3RD FLOOR. DO NOT REMOVE CEILING/FLOOR FRAMING

2 THIRD FLOOR DEMOLITION PLAN
1/4"=1'-0"

1 SECOND FLOOR DEMOLITION PLAN
1/4"=1'-0"

NOT FOR CONSTRUCTION. FOR INTERIOR DEMO ONLY.



Rachel Conly Design LLC
26 Sterling Street
Peaks Island, Maine 04108
207.766.5625
www.rachelconlydesign.com

DATE	2017.12.18	NOTES	Interior Non-Structural Demolition Permit
REVISED			



PROJECT
Renovations to
123 Cumberland Ave.
Portland, ME

SECOND
& THIRD FLOOR
DEMO PLANS

D1.2