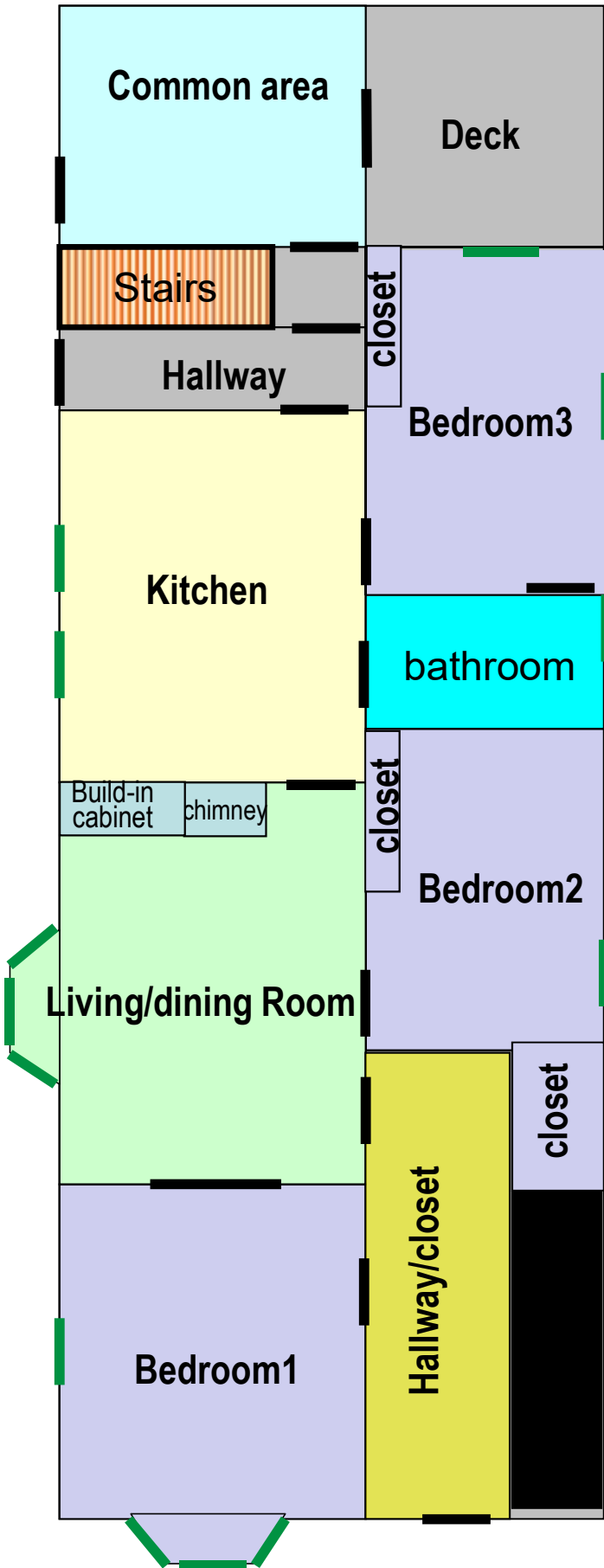
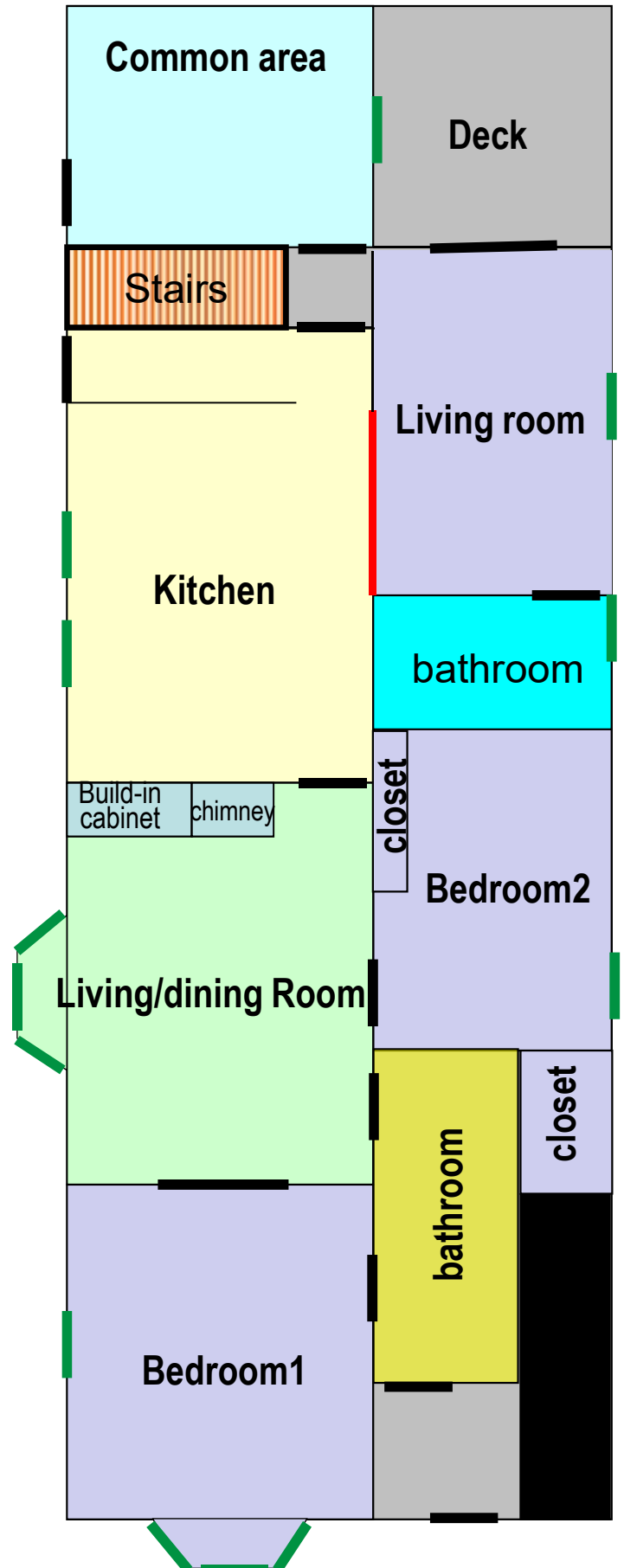


1st FL

Existing Layout



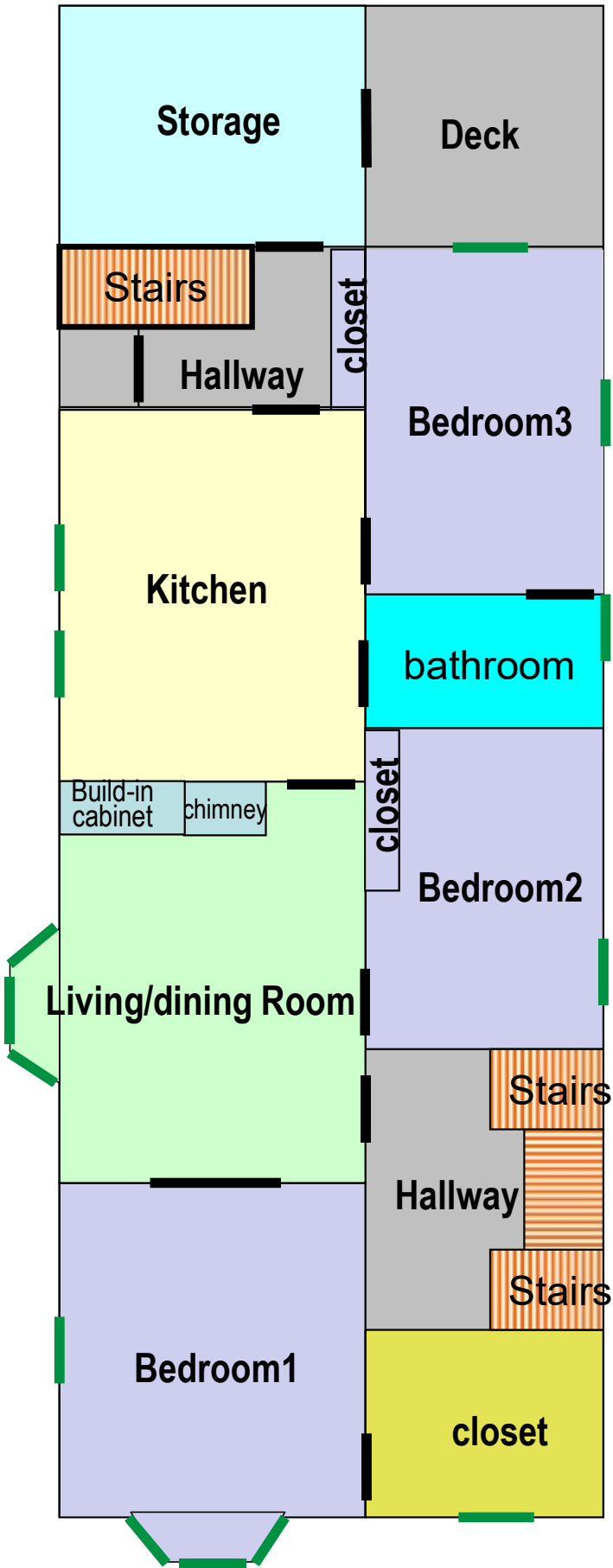
New Layout



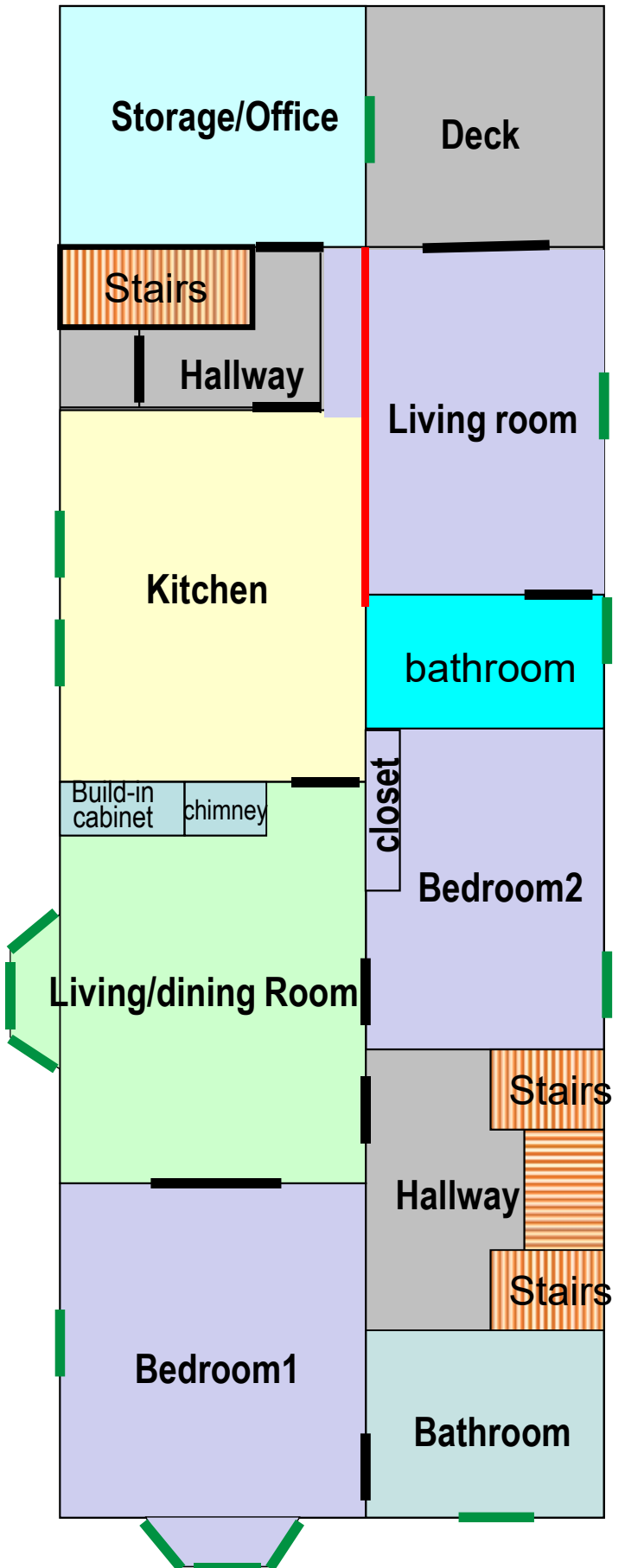
Note: key changes include: 1) convert 1 closet to bathroom; 2) convert Bedroom3 to Living room by taking out one wall/partition and replacing with a support beam (see red line). Black bars on partitions indicate doors and green bars on partitions indicate windows.

2nd FL

Existing Layout



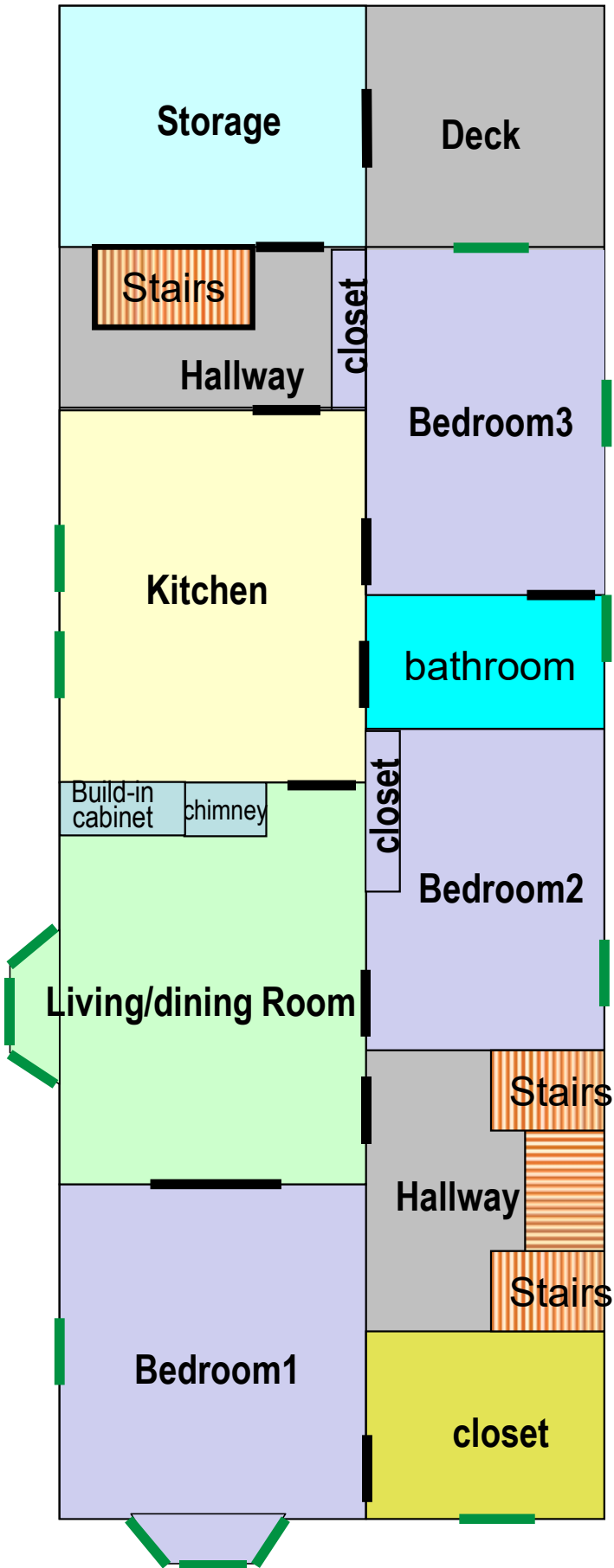
New Layout



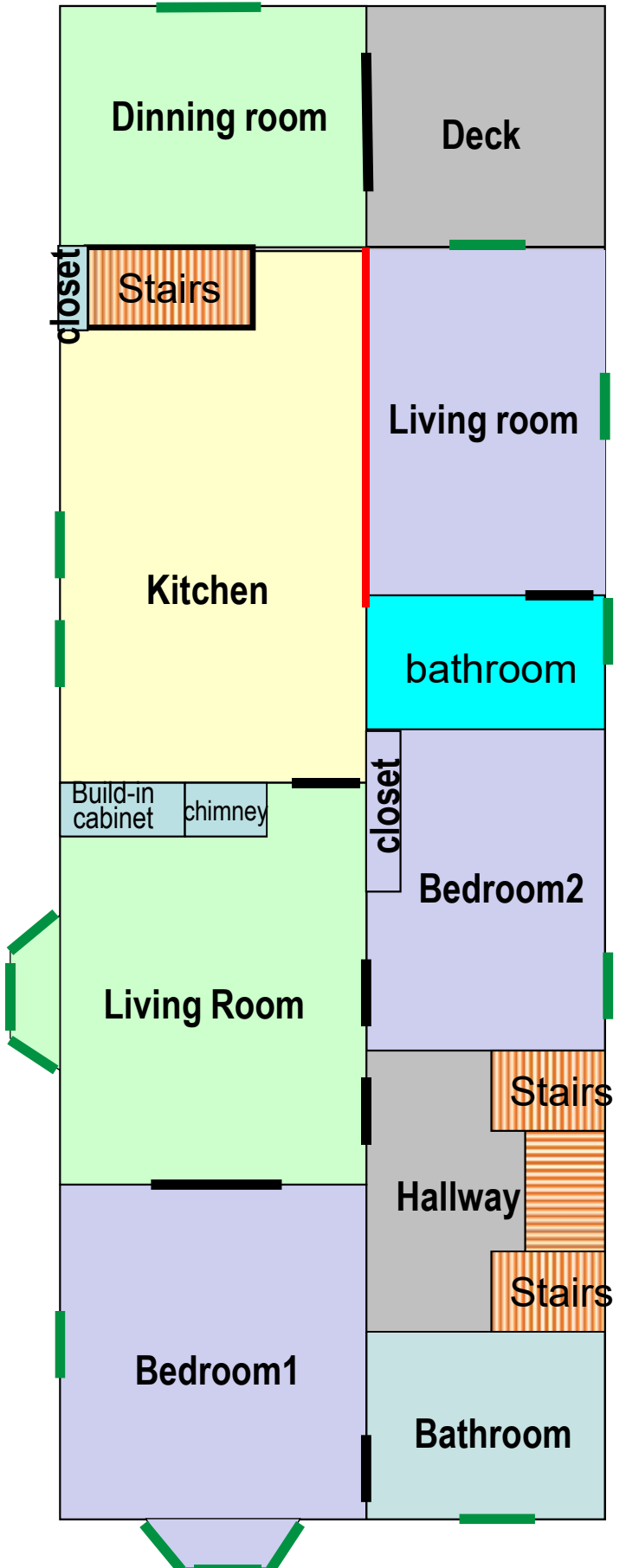
Note: key changes include: 1) convert 1 closet to bathroom; 2) convert Bedroom3 to Living room by taking out one wall/partition and replacing with a support beam (see red line). Black bars on partitions indicate doors and green bars on partitions indicate windows.

3rd FL

Existing Layout



New Layout



Note: key changes include: 1) convert 1 closet to bathroom; 2) convert Bedroom3 to Living room by taking out one wall/partition and replacing with a support beam (see red line). Black bars on partitions indicate doors and green bars on partitions indicate windows.