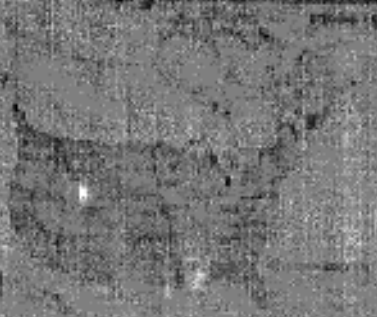


ENERGY STAR Certified in Highlighted Regions  
 Consult ENERGY STAR label for region or jurisdiction

Canada  
 ENERGY STAR



U.S. EPA  
 ENERGY STAR



ENERGY STAR Certified in Highlighted Regions



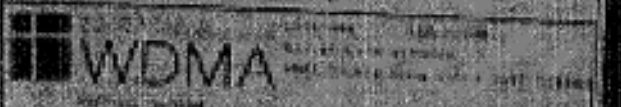
Approved  
 California  
 ENERGY STAR  
 CPO# 531-00-0151-00001  
 2021 Double Hung Vinyl Coat. Window  
 Lot# 89887-111

ENERGY PERFORMANCE RATINGS

U-Factor 0.29	R-Value 1.65	SHGC 0.25
------------------	-----------------	--------------

ADDITIONAL PERFORMANCE RATINGS

Visible Transmittance 0.50	
-------------------------------	--



STANDARD	MODEL

ENERGY STAR CERTIFIED PRODUCT  
 ENERGY STAR CERTIFIED PRODUCT  
 ENERGY STAR CERTIFIED PRODUCT

**ENERGY STAR® Certified in Highlighted Regions**  
 Certifies ENERGY STAR stars for regions on certificate

Canada  
 energystar.gc.ca



ENERGY STAR

U.S. / E.U.  
 energystar.gov



DO NOT REMOVE LABEL FROM WINDOW UNTIL YOU HAVE INSPECTED IT



OPN 511-W-33-2151-0001  
 2001 Double Hung Vinyl Dual Glazed  
 LoE3 Argon Fill

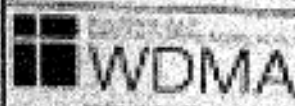
**ENERGY PERFORMANCE RATINGS**

U-Factor		Solar Heat Gain Coefficient	
<b>0.29</b>	<b>1.65</b>	<b>0.25</b>	
<small>U-Value</small>	<small>SHGC</small>		

**ADDITIONAL PERFORMANCE RATINGS**

Visible Transmittance	
<b>0.50</b>	

For more information on window performance ratings, visit us at www.nvlab.org. For more information on the American Craftsmen Network, visit us at www.american-craftsmen.com. For more information on the Energy Star program, visit us at www.energystar.gov. For more information on the National Voluntary Laboratory Accreditation Program, visit us at www.nvlab.org.



**WDMA**  
 Window Distributors  
 Manufacturers Association

1-800-4-A-WINDOW  
 1-800-4-26-6262  
 3001 Double Hung Vinyl Dual Glazed  
 LoE3 Argon Fill

<b>INSTALLER</b>	<b>INSTALL DATE</b>
<b>INSTALLER SIGNATURE</b>	<b>INSTALLER PRINT NAME</b>

Model: 2001 Double Hung Vinyl Dual Glazed LoE3 Argon Fill  
 Date: 08/12/08

Window: 2001 Double Hung Vinyl Dual Glazed LoE3 Argon Fill  
 Date: 08/12/08

Manufacturer: WDMA  
 22507885.1.4