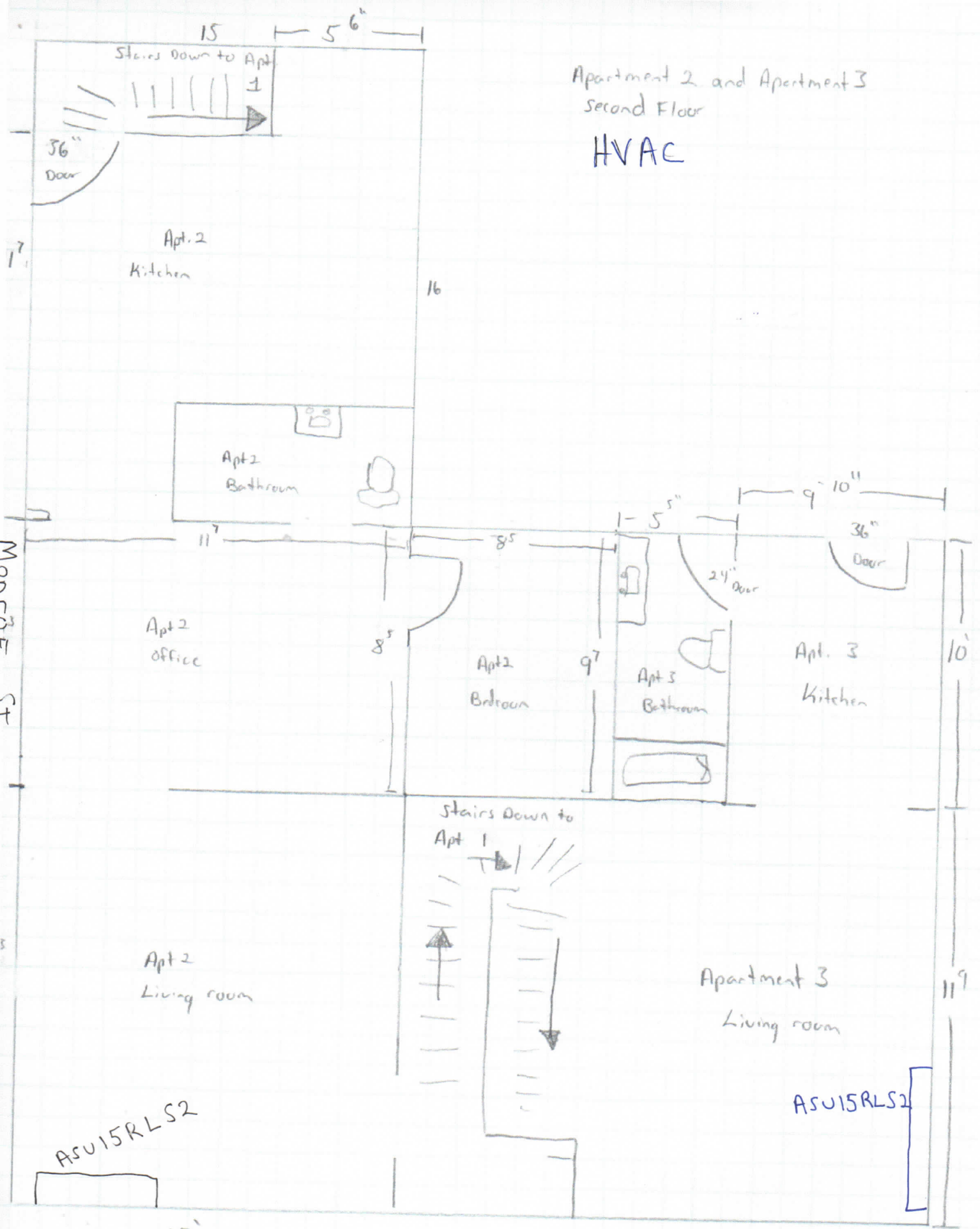


Apartment 2 and Apartment 3
Second Floor

HVAC



Greenleaf St.

15RLS2 Submittal



AOU15RLS2, ASU15RLS2 Inverter Driven Heat Pump

Job Name: Greenleaf st
 Location: APT. 2
 Engineer: _____
 Submitted to: _____
 Submitted by: _____
 Reference: _____

Approval: _____
 Date: _____
 Construction: _____
 Unit #: _____
 Drawing #: _____

Outdoor Unit Power	208-230/VAC-1Ph-60Hz
Available Voltage Range	187-253VAC
Fuse Size, Max.	20A
MCA	13.5A
Compressor	Inverter Driven Variable Speed DC Rotary
No. used	1
Output	1000W
Lubrican Oil	POE (RB68)
Fan type	Propeller
Motor Output	115W
Airflow Rate	Cooling/Heating (High) 1206 / 1082CFM
Refrigerant	R410A
Outdoor Unit	2lbs 12.0oz
Control	Electronic Expansion Valve
O.D. Discharge	(in) 1/4"(Flare)
O.D Suction	(in) 1/2"(Flare)
Dimensions	H x W x D
Uncrated	(in) 24-1/2 x 31-3/32 x 11-11/32
	(mm) (620 x 790 x 290)
Crated	(in) 28-1/16 x 37-7/32 x 15-9/16
	(mm) (713 x 945 x 395)
Weight	Outdoor
Net	86lbs (39kg)
Gross Shipping	95lbs (43kg)

Cooling	
Rated Capacity	14,500BTU/h
Min-Max Capacity	3,100~18,400BTU/h
Rated Power Input	1.21kw
Max. Power Input	2.16kw
SEER	21.5
EER	12.0
Outdoor Sound Rating	51dB

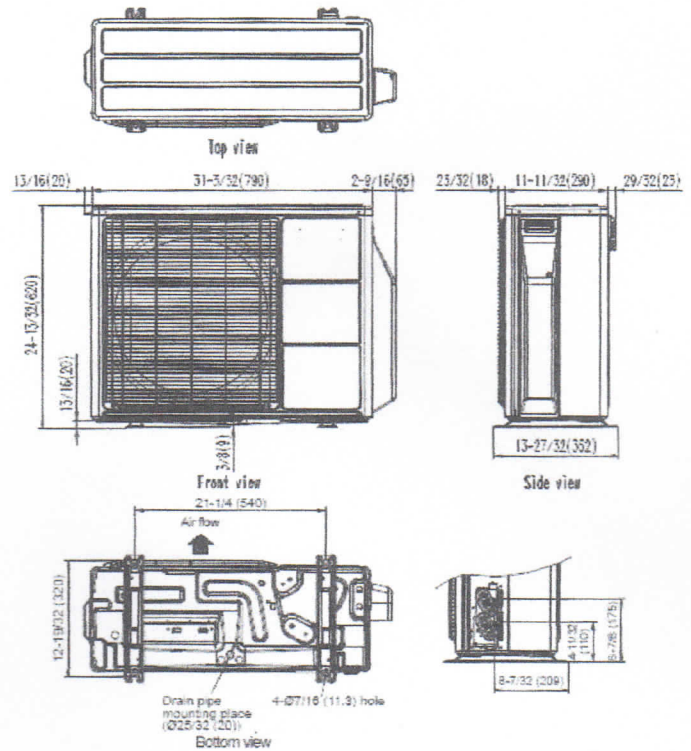
Heating	
Rated Capacity	18,000BTU/h
Min-Max Capacity	3,100~23,900BTU/h
Rated Power Input	1.35kw
Max. Power Input	3.07kw
HSPF	12
EER	13.3
Outdoor Sound Rating	51dB

Piping Lengths	
Max. Piping Length (Total)	66ft
Max. Pipe Height Difference	49ft
Connection method	(Flared)

Operating Range	
Cooling	14°F~115°F DB
Heating	-5°F~75°F DB

Fujitsu General America, Inc.
 Fairfield, NJ 07004
 Toll Free: 1-888-888-3424
 Fax: (973) 836-0447
 www.fujitsugeneral.com

Fujitsu products are subject to continuous improvements. Fujitsu reserves the right to modify product design, specifications and information in this data sheet without notice and without incurring any obligations.



Note: Specifications are based on the following conditions.

Power source of specifications : 230V

Cooling: Indoor temperature of 80°F(26.67°C)DB / 67°F(19.44°C)WB, and outdoor temperature of 95°F(35°C)DB/75°F(23.89°C)WB.

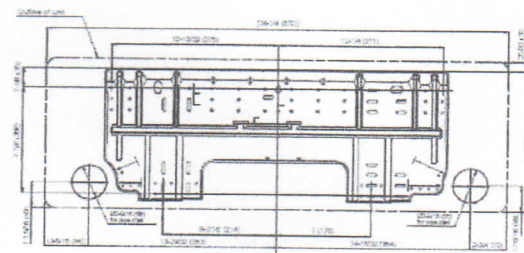
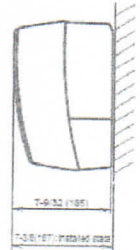
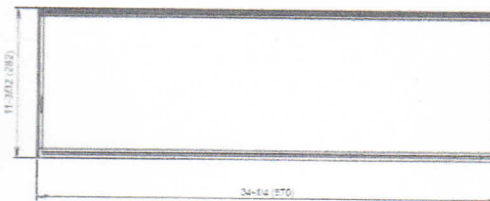
Heating: Indoor temperature of 70°F(21.11°C)DB / 60°F(15.56°C)WB, and outdoor temperature of 47°F(8.33°C)DB/43°F(6.11°C)WB.

Pipe length : 24ft. 7in.(7.5m), Height difference : 0 ft.(0m) [Outdoor unit - Indoor unit]





Indoor Unit Power	208-230VAC-1Ph-60Hz	
Available Voltage Range	187-253VAC	
Fan type	Cross flow	
Motor Output	29W	
MCA	0.4A	
Sound Pressure Level		
Cooling	Lo-Hi	25-45dB
Heating	Lo-Hi	25-45dB
Airflow rate		
Cooling	Lo-Hi	229-529CFM
Heating	Lo-Hi	253-559CFM
Dimensions	H x W x D	
Uncrated	(in)	11-3/32 x 34-1/4 x 7-9/32
	(mm)	(282 x 870 x 185)
Crated	(in)	9-23/32 x 36-7/32 x 14-11/16
	(mm)	(247 x 920 x 373)
Weight	Indoor	
Net	21lbs (9.5kg)	
Gross Shipping	27lbs (12kg)	



Fujitsu General America, Inc.
 Fairfield, NJ 07004
 Toll Free: 1-888-888-3424
 Fax: (973) 836-0447
 www.fujitsu-general.com

Fujitsu products are subject to continuous improvements. Fujitsu reserves the right to modify product design, specifications and information in this data sheet without notice and without incurring any obligations.

