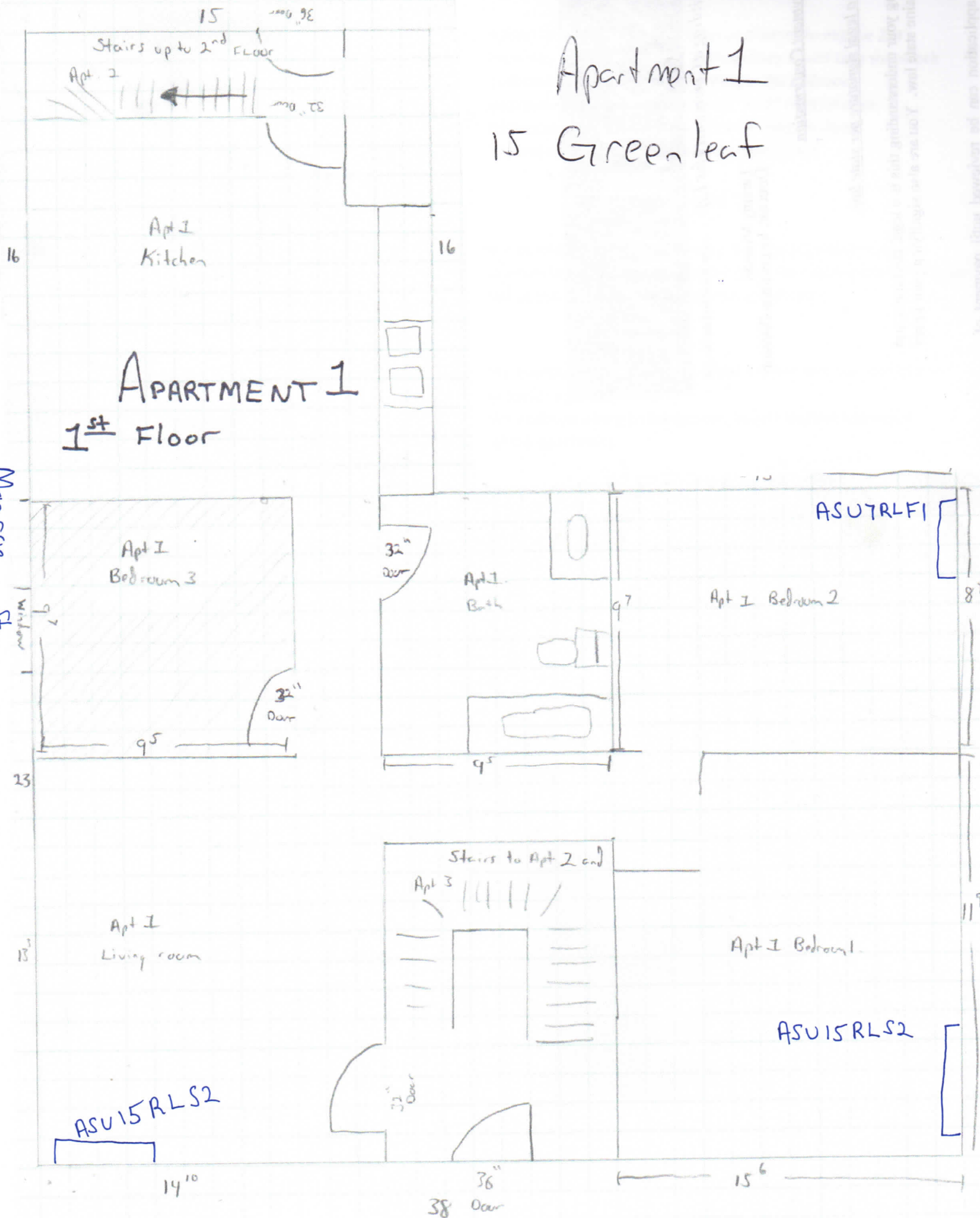


Apartment 1 15 Greenleaf

Marque St.



Greenleaf St.

Submittal Data: ASU7RLF1



Job Name: _____ Location: APT. 1

Purchaser: _____

Engineer: _____

Submitted To: _____ For: Reference Approval Construction

Submitted By: _____

Unit Designation: _____ Schedule No. _____ Model No.: _____

Capacities:

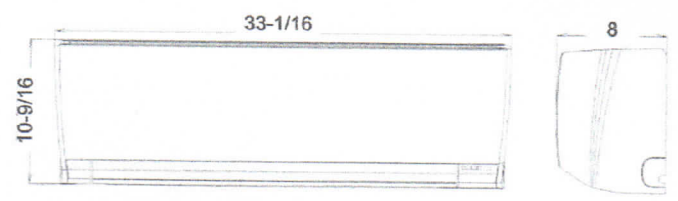
Voltage/Frequency/Phase	208-230/60/1
Available Voltage Range	187-253VAC
Cooling	7,000 BTU/h
Outdoor Design Temp. <i>F</i> ^o DB/WB	95/75
Heating	8,100 BTU/h
Outdoor Design Temperature <i>F</i> ^o DB/WB	47/43
CFM Cooling - H/ M/ L/ Q	330/294/253/200
CFM Heating - H/ M/ L/ Q	330/294/253/206
Noise Level Cooling db (A) - H/ M/ L/ Q	36/32/29/21
Noise Level Heating db (A) - H/ M/ L/ Q	36/32/29/22
Weight	19 lbs.

Refrigerant Piping:*

Discharge Vapor Line (O.D.)	1/4 in.
Suction (O.D.)	3/8 in.

- Standard Features:**
- ♦ Seven year compressor warranty
 - ♦ Five year parts warranty
 - ♦ Digital wireless remote control
 - ♦ Auto Louver: Up/Down
 - ♦ Apple Catechin / Ion Deodorizing Filters
 - ♦ Sleep Timer
 - ♦ Auto Restart/ Reset
 - ♦ 24 hour timer
 - ♦ Quiet Mode
 - ♦ Dry mode
 - ♦ Refrigerant R410A

OUTLINE AND DIMENSIONS



Notes:

*Piping lengths vary by outdoor unit. See outdoor unit submittal sheet for detailed specifications.



Submittal Data: ASU7RLF1



Job Name: _____ Location: APT 1

Purchaser: _____

Engineer: _____

Submitted To: _____ For: Reference Approval Construction

Submitted By: _____

Unit Designation: _____ Schedule No. _____ Model No.: _____

Capacities:

Voltage/Frequency/Phase	208-230/60/1
Available Voltage Range	187-253VAC
Cooling	7,000 BTU/h
Outdoor Design Temp. <i>F° DB/WB</i>	95/75
Heating	8,100 BTU/h
Outdoor Design Temperature <i>F° DB/WB</i>	47/43
CFM Cooling - <i>H/ M/ L/ Q</i>	330/294/253/200
CFM Heating - <i>H/ M/ L/ Q</i>	330/294/253/206
Noise Level Cooling <i>db (A) - H/ M/ L/ Q</i>	36/32/29/21
Noise Level Heating <i>db (A) - H/ M/ L/ Q</i>	36/32/29/22
Weight	19 lbs.

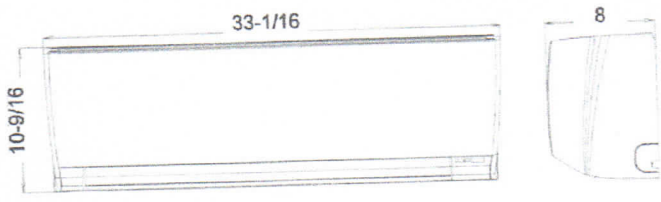
Refrigerant Piping:*

Discharge Vapor Line (O.D.)	1/4 in.
Suction (O.D.)	3/8 in.

Standard Features:

- ◆ Seven year compressor warranty
- ◆ Five year parts warranty
- ◆ Digital wireless remote control
- ◆ Auto Louver: Up/Down
- ◆ Apple Catechin / Ion Deodorizing Filters
- ◆ Sleep Timer
- ◆ Auto Restart/ Reset
- ◆ 24 hour timer
- ◆ Quiet Mode
- ◆ Dry mode
- ◆ Refrigerant R410A

OUTLINE AND DIMENSIONS



Notes: _____

*Piping lengths vary by outdoor unit. See outdoor unit submittal sheet for detailed specifications.



Submittal Data: ASU12RLF1



Job Name: _____ Location: APT 1

Purchaser: _____

Engineer: _____

Submitted To: _____ For: Reference Approval Construction

Submitted By: _____

Unit Designation: _____ Schedule No. _____ Model No.: _____

Capacities:

Voltage/Frequency/Phase	208-230/60/1
Available Voltage Range	187-253VAC
Cooling	12,000 BTU/h
Outdoor Design Temp. <i>F° DB/WB</i>	95/75
Heating	16,000 BTU/h
Outdoor Design Temperature <i>F° DB/WB</i>	47/43
CFM Cooling - <i>H/ M/ L/ Q</i>	441/376/282/182
CFM Heating - <i>H/ M/ L/ Q</i>	441/376/306/194
Noise Level Cooling <i>db (A) - H/ M/ L/ Q</i>	43/40/32/21
Noise Level Heating <i>db (A) - H/ M/ L/ Q</i>	43/38/33/22
Weight	24 lbs.

Refrigerant Piping:*

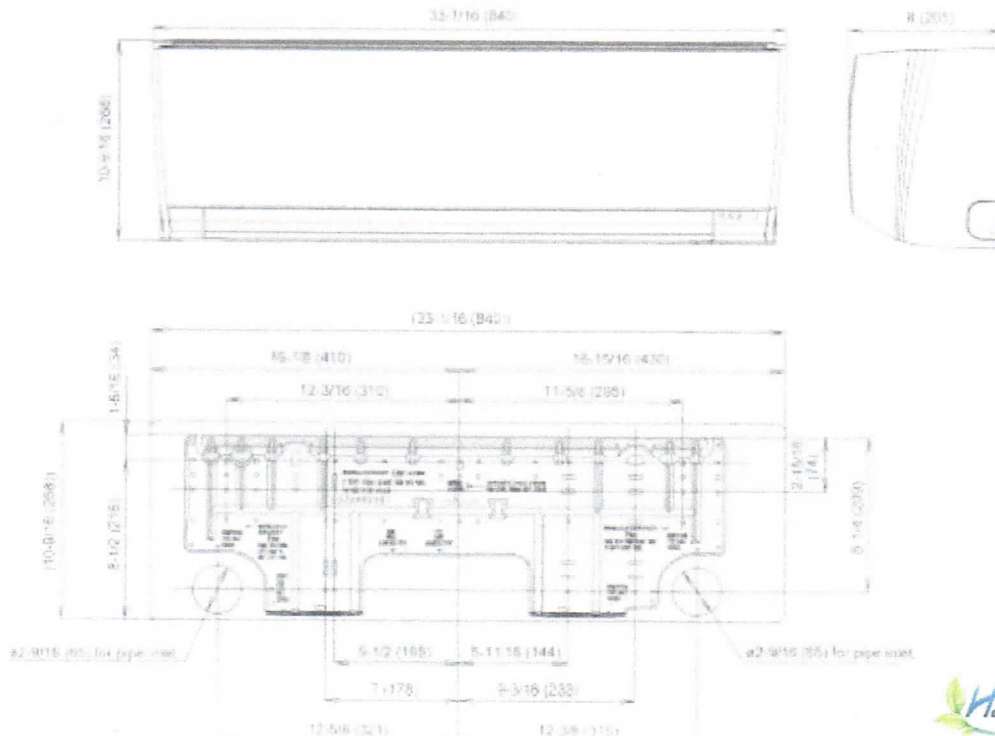
Discharge Vapor Line (O.D.)	1/4 in.
Suction (O.D.)	3/8 in.

Standard Features:

- ♦ Minimum Heat
- ♦ Five year parts warranty
- ♦ Digital wireless remote control
- ♦ Auto Louver: Up/Down
- ♦ Apple Catechin / Ion Deodorizing Filters
- ♦ Sleep Timer
- ♦ Auto Restart/ Reset
- ♦ 24 hour timer
- ♦ Quiet Mode
- ♦ Dry mode
- ♦ Refrigerant R410A

*Piping lengths vary by outdoor unit. See outdoor unit submittal sheet for detailed specifications.

OUTLINE AND DIMENSIONS



Hybrid Flex Submittal



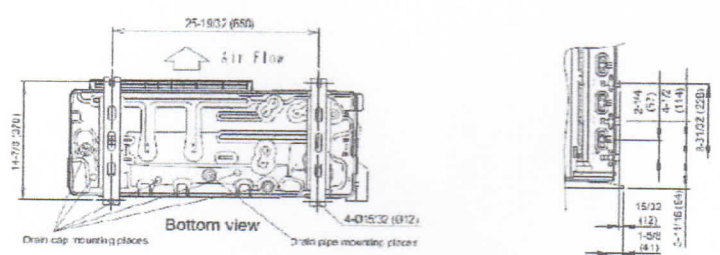
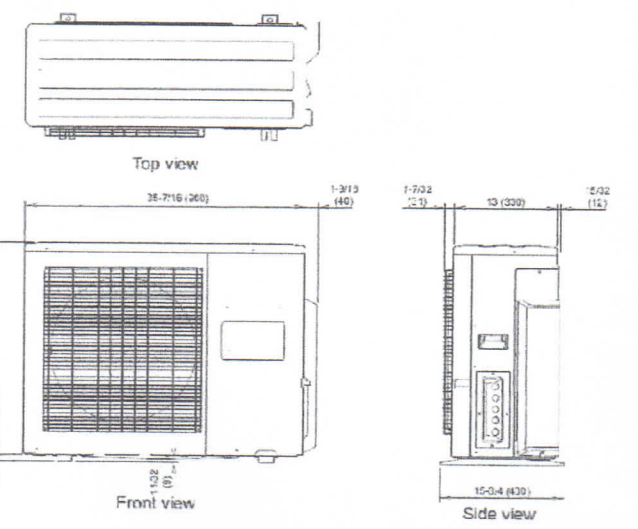
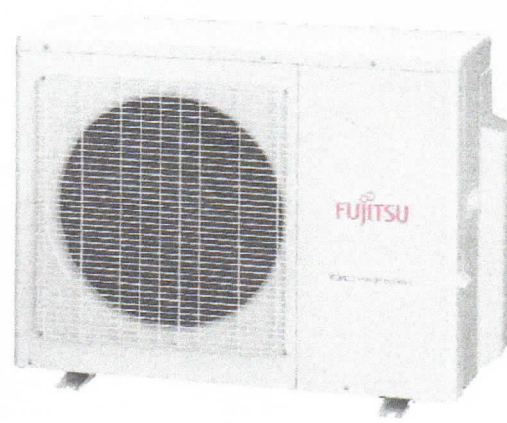
AOU24RLXFZ

Hybrid Flex Inverter System Heat Pump

Job Name: _____
 Location: APT 1
 Engineer: _____
 Submitted to: _____
 Submitted by: _____
 Reference: _____

Approval: _____
 Date: _____
 Construction: _____
 Unit #: _____
 Drawing #: _____

General Data (at 230V)	
Power	208-230VAC-1ph-60Hz
Fuse Size, Max.	25A
Minimum Circuit Ampacity(MCA)	17A
Compressor	Inverter driven variable speed DC Twin Rotary
No. used	1
Output	1,100W
Lubrican Oil	POE
Fan type	Propeller
Motor Output	100W
CFM Cooling/Heating (High)	1,942 / 1,942
Refrigerant	410A
Outdoor unit charge	4lbs 14oz.(2,200g)
Control	Electronic Expansion Valve
O.D. Discharge (in)	1/4"x3(Flare)
O.D Suction (in)	3/8"x2 + 1/2"x1(Flare)
Dimensions	H x W x D
Uncrated (in)	27-9/16 x 35-7/16 x 13
(mm)	(700 x 900 x 330)
Crated (in)	32-7/8 x 41-11/32 x 17-17/32
(mm)	(835 x 1,050 x 445)
Weight	Outdoor
Net	124lbs(56kg)
Gross Shipping	139lbs (63kg)
Cooling Capacity	22,000(6,100~27,000)BTU/h
Rated Power Input	1.9kW
Max. Power Input	2.72kW
Outdoor Sound Rating	51dB
Heating Capacity	22,000 (6,800-24,400)BTU/h
Rated Power Input	1.84kW
Max. Power Input	2.09kW
Outdoor Sound Rating	49dB
Piping Lengths	
Pre-charge length	98ft
Max. Piping Length (Total)	164ft
Max. length (each)	82ft
Min. length (total)	49ft
Min. length (each)	16ft
Max. Pipe Height Difference	
Between condenser and each indoor unit	49ft
Between indoor units	33ft
Connection method	(Flared)
Operating Range	
Cooling	14°F~115°F DB
Heating	5°F~75°F DB



	Non-Ducted	Ducted & Non-Ducted	Ducted
SEER	18	16.75	15.50
HSPF	9.50	9.25	9.0
EER	12.50	11.55	10.60

Fujitsu General America, Inc.
 Fairfield, NJ 07004
 Toll Free: 1-888-888-3424
 Fax: (973) 836-0447
 www.fujitsugeneral.com

Fujitsu products are subject to continuous improvements. Fujitsu reserves the right to modify product design, specifications and information in this data sheet without notice and without incurring any obligations.

Note: Specifications are based on the following conditions.

Power source of specifications : 230V
 Cooling: Indoor temperature of 80°F(26.67°C)DB / 67°F(19.44°C)WB, and outdoor temperature of 95°F(35°C)DB/75°F(23.89°C)WB.
 Heating: Indoor temperature of 70°F(21.11°C)DB / 60°F(15.56°C)WB, and outdoor temperature of 47°F(8.33°C)DB/43°F(6.11°C)WB.
 Pipe length : 24ft. 7in.(7.5m), Height difference : 0 ft.(0m) [Outdoor unit - Indoor unit]

