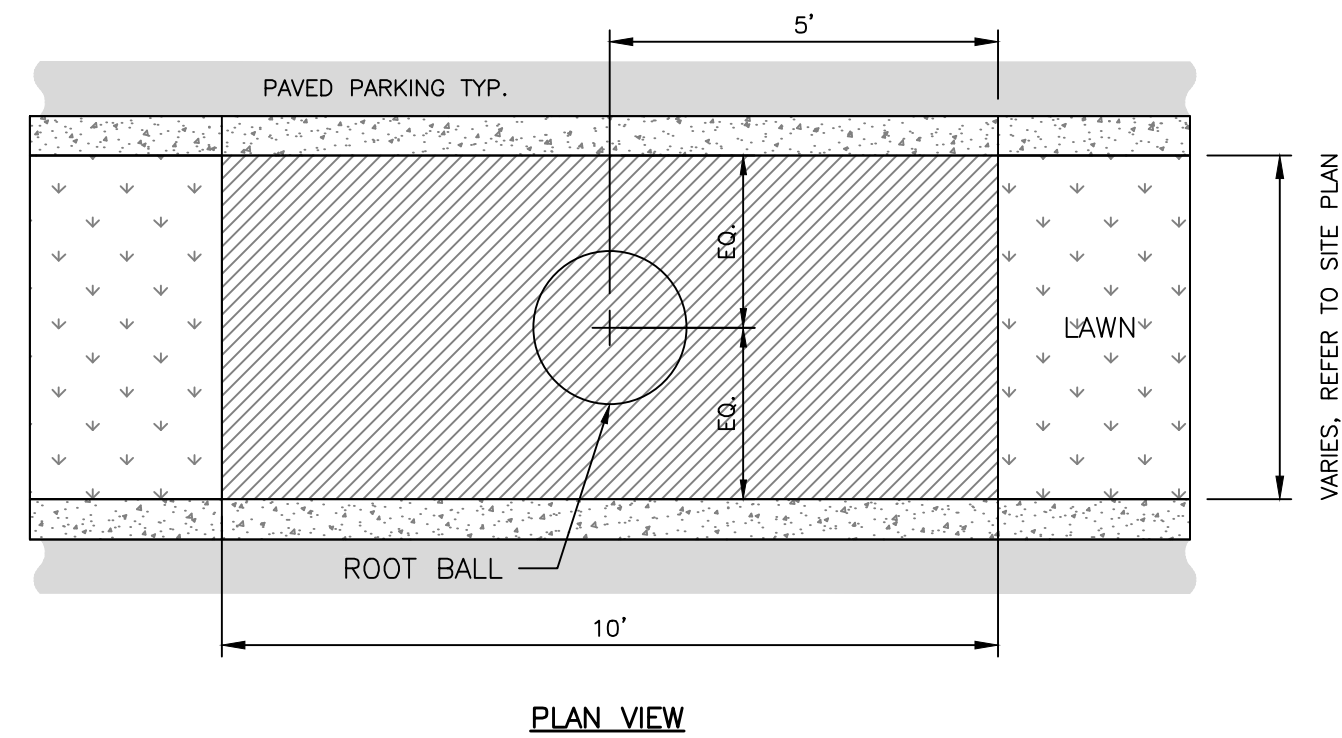
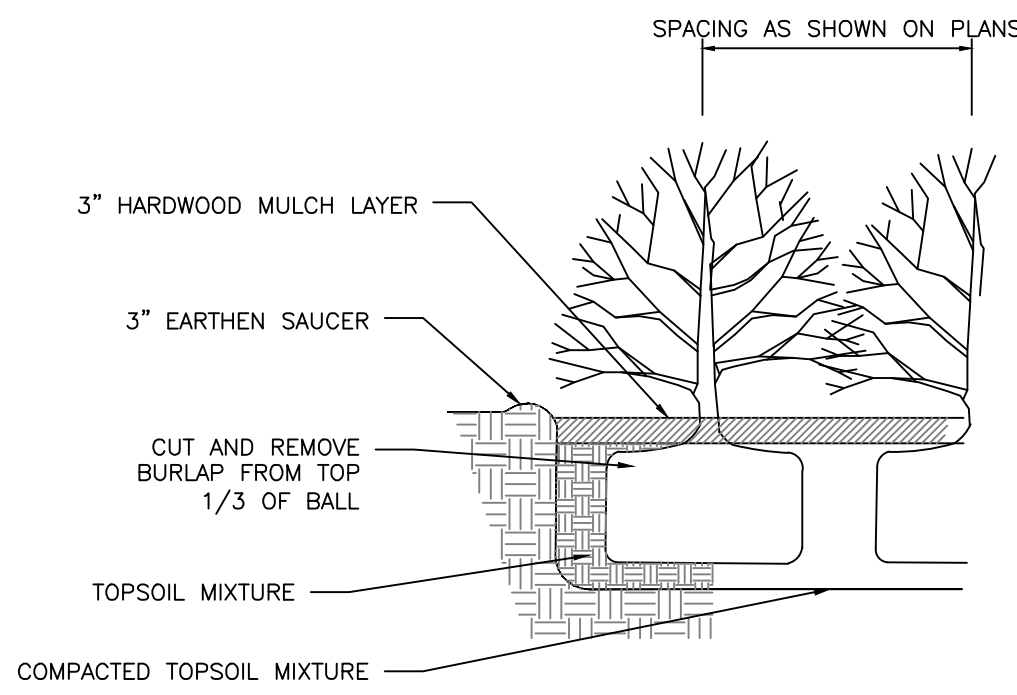
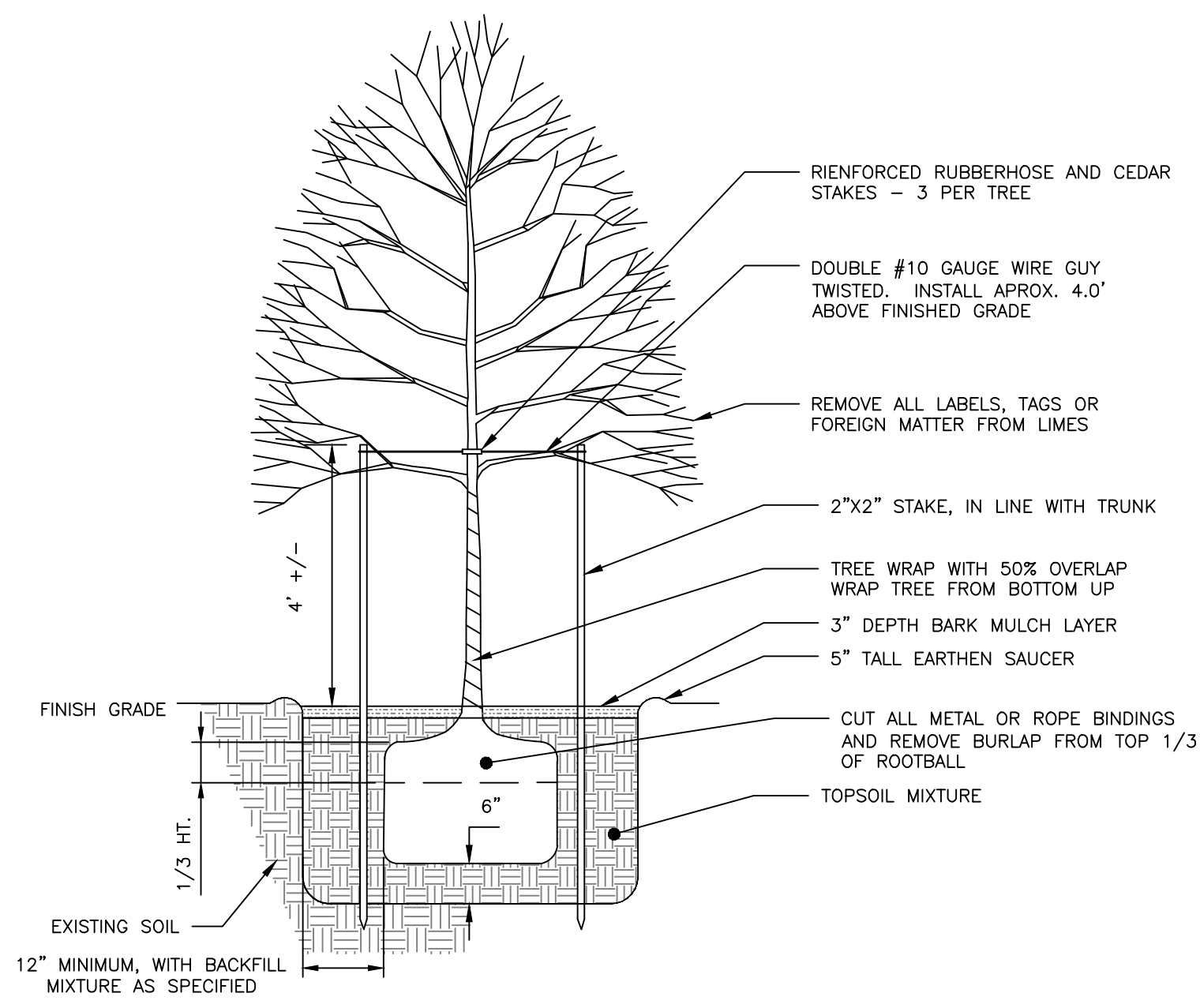
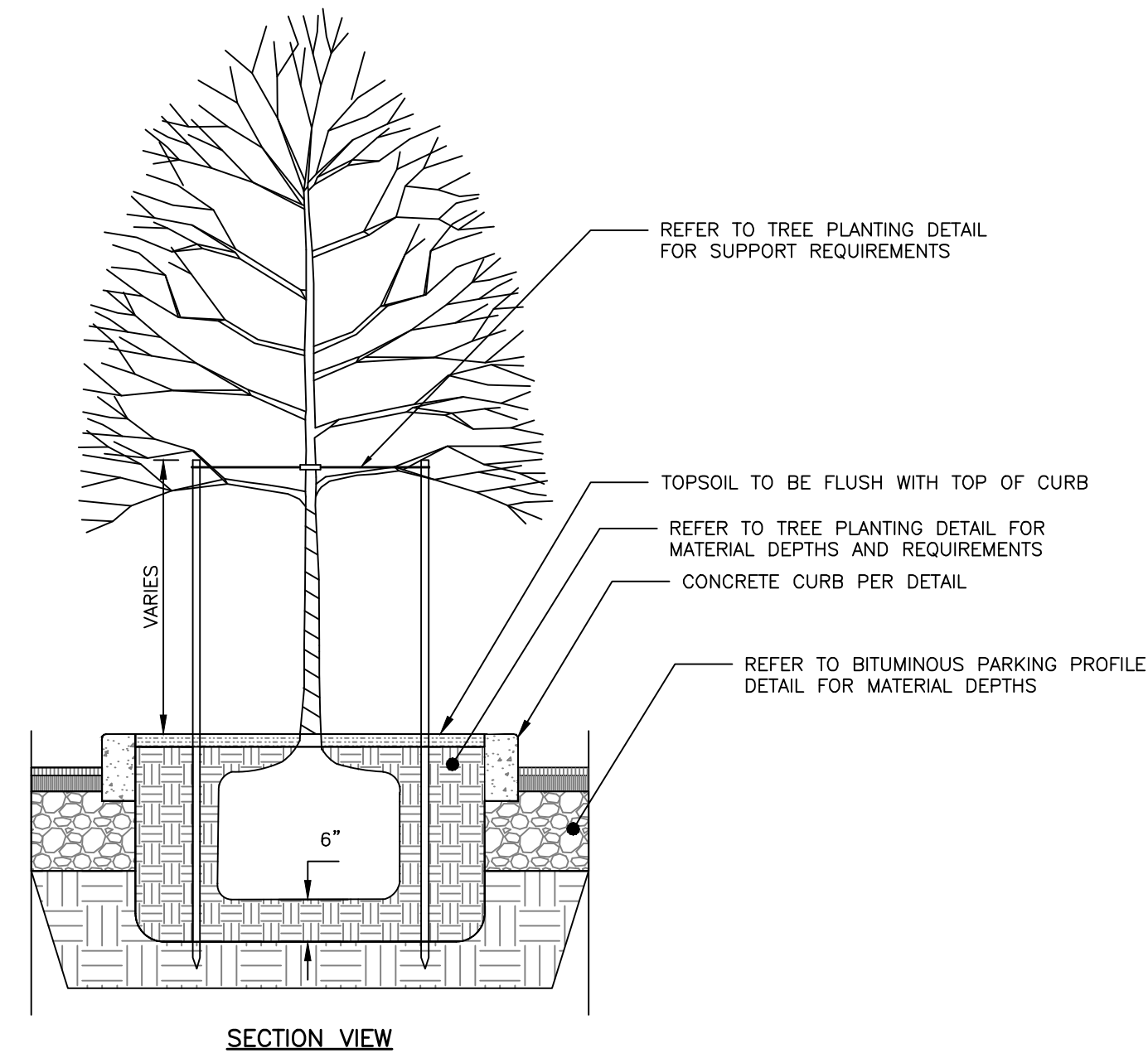
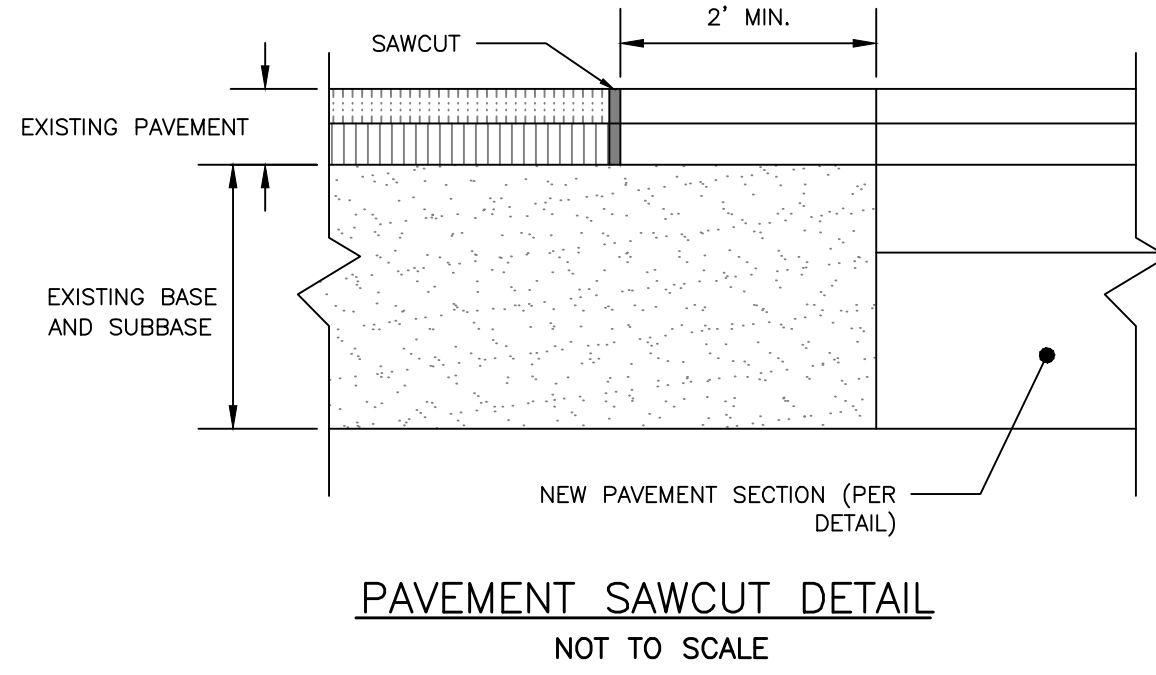


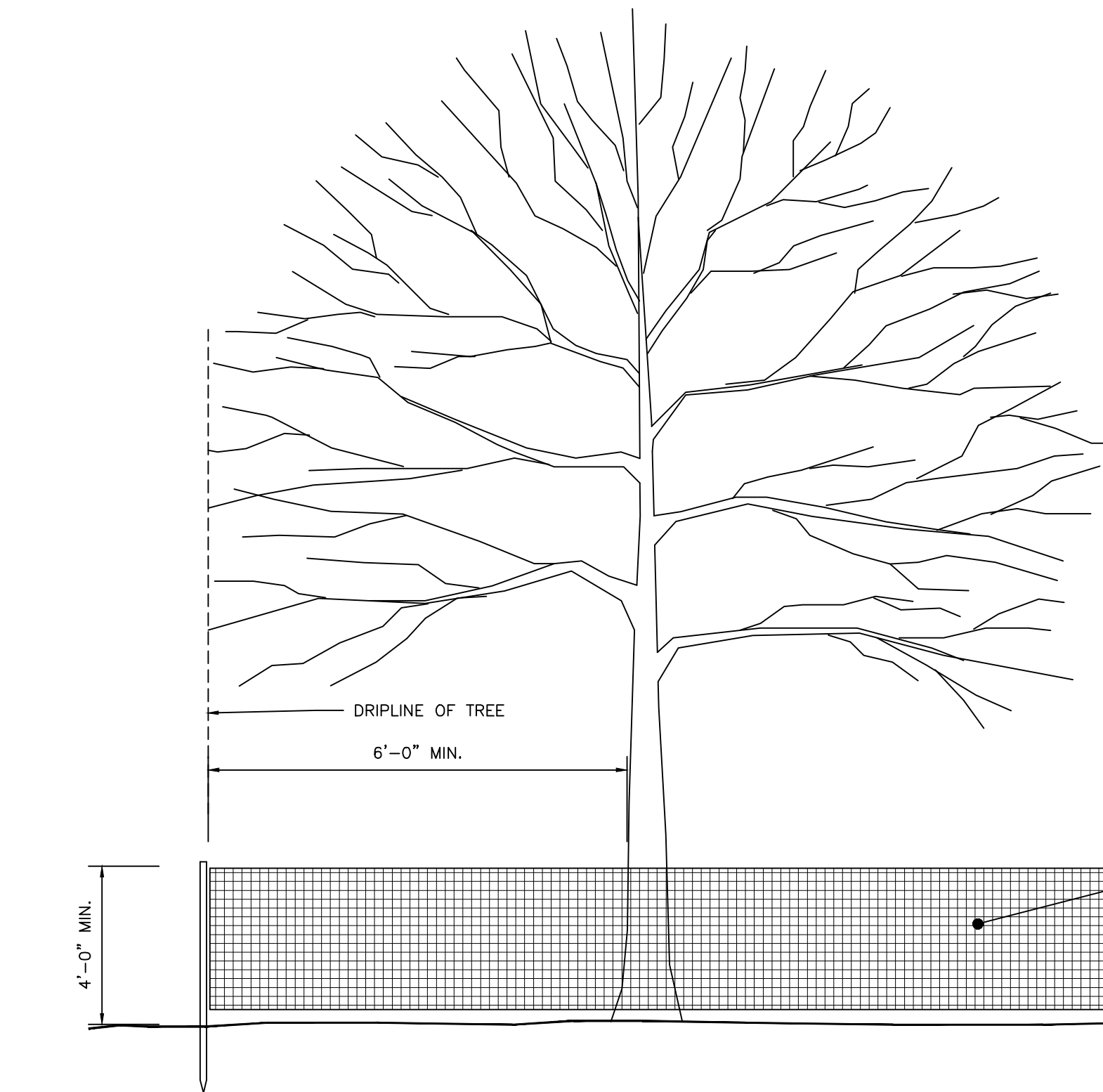
NOTES:

1. SAWCUT EXISTING PAVEMENT AND REMOVE 2" STRIP OF EXISTING PAVEMENT. APPLY BITUMINOUS TACK COAT PRIOR TO PLACEMENT OF NEW BITUMINOUS PAVEMENT.
2. THE NEW PAVEMENT SECTION SHALL MEET THE CITY OF PORTLAND ARTERIAL BITUMINOUS PAVEMENT SECTION DETAIL AT A MINIMUM OR THE THE EXISTING PAVEMENT AND AGGREGATE BASE AND SUBBASE DEPTH WHICHEVER IS GREATER.



SHRUB PLANTING DETAIL
NOT TO SCALE

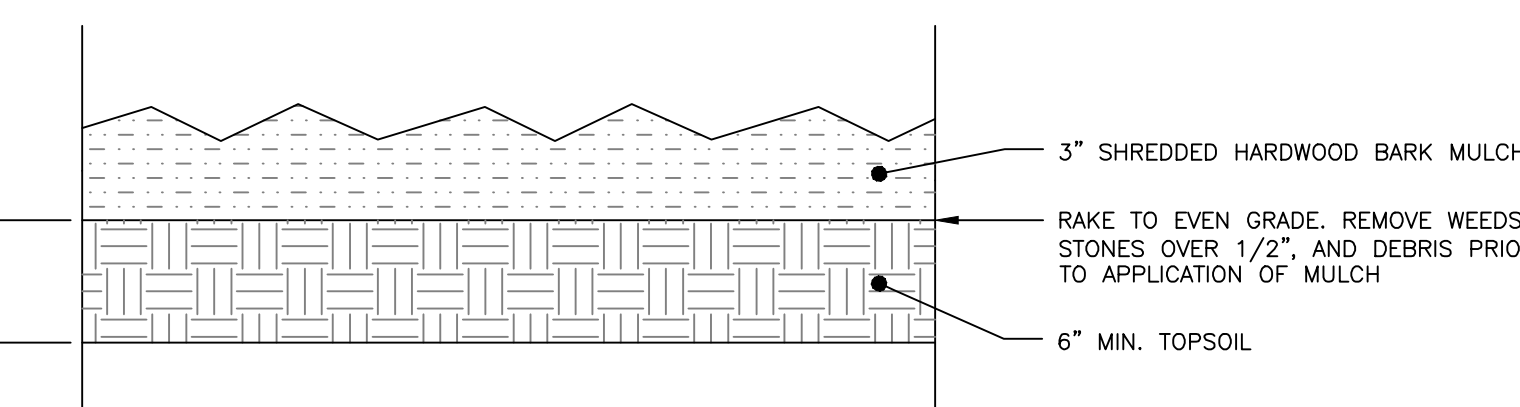
TREE PLANTING IN PARKING ISLAND DETAIL
NOT TO SCALE



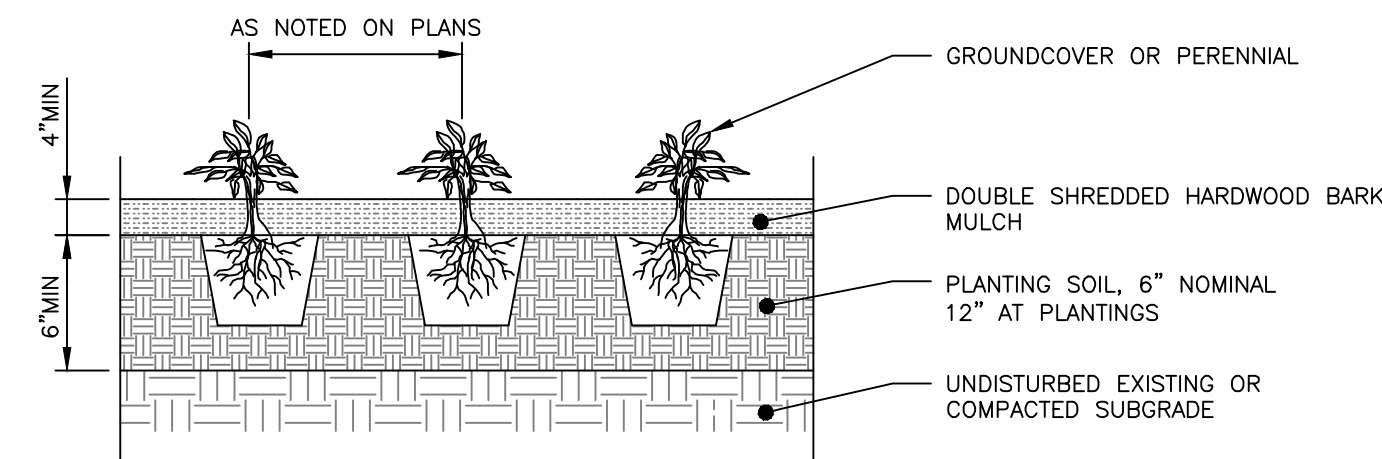
NOTES:

1. TREE PROTECTION FENCING SHALL BE INSTALLED PRIOR TO ANY CONSTRUCTION ACTIVITY.
2. INSTALL PROTECTIVE FENCING TO LIMIT OF DRIPLINE ON TREE OR A MINIMUM OF 6' FROM TRUNK WHEN NECESSARY, WITH PRIOR PERMISSION OF LANDSCAPE ARCHITECT.
3. DO NOT STORE CONSTRUCTION EQUIPMENT, MATERIALS, TOOLS, ETC. WITHIN PROTECTIVE FENCING.
4. MAINTAIN FENCING IN A NEAT AND ORDERLY FASHION THROUGHOUT CONSTRUCTION PERIOD.

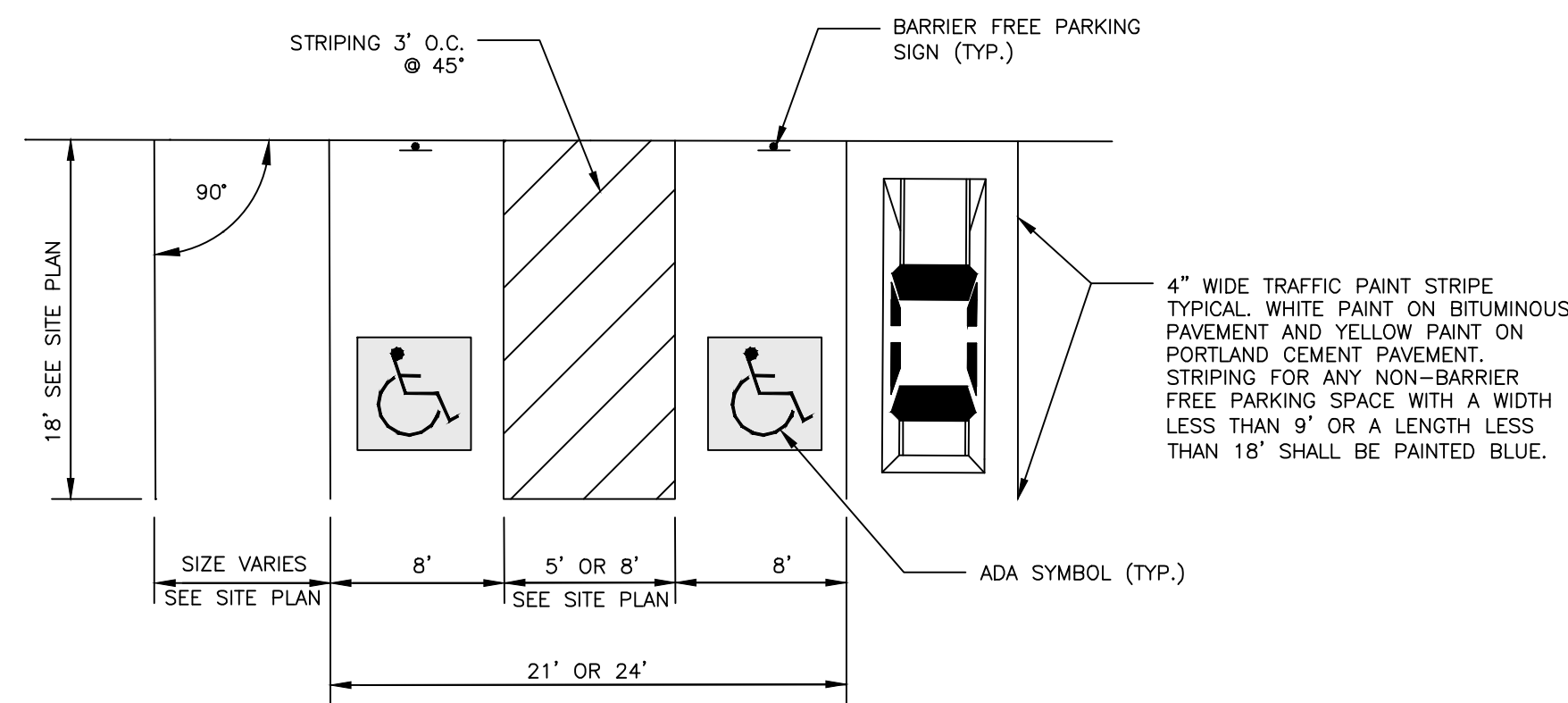
TREE PROTECTION DETAIL
NOT TO SCALE



BARK MULCH DETAIL
NOT TO SCALE



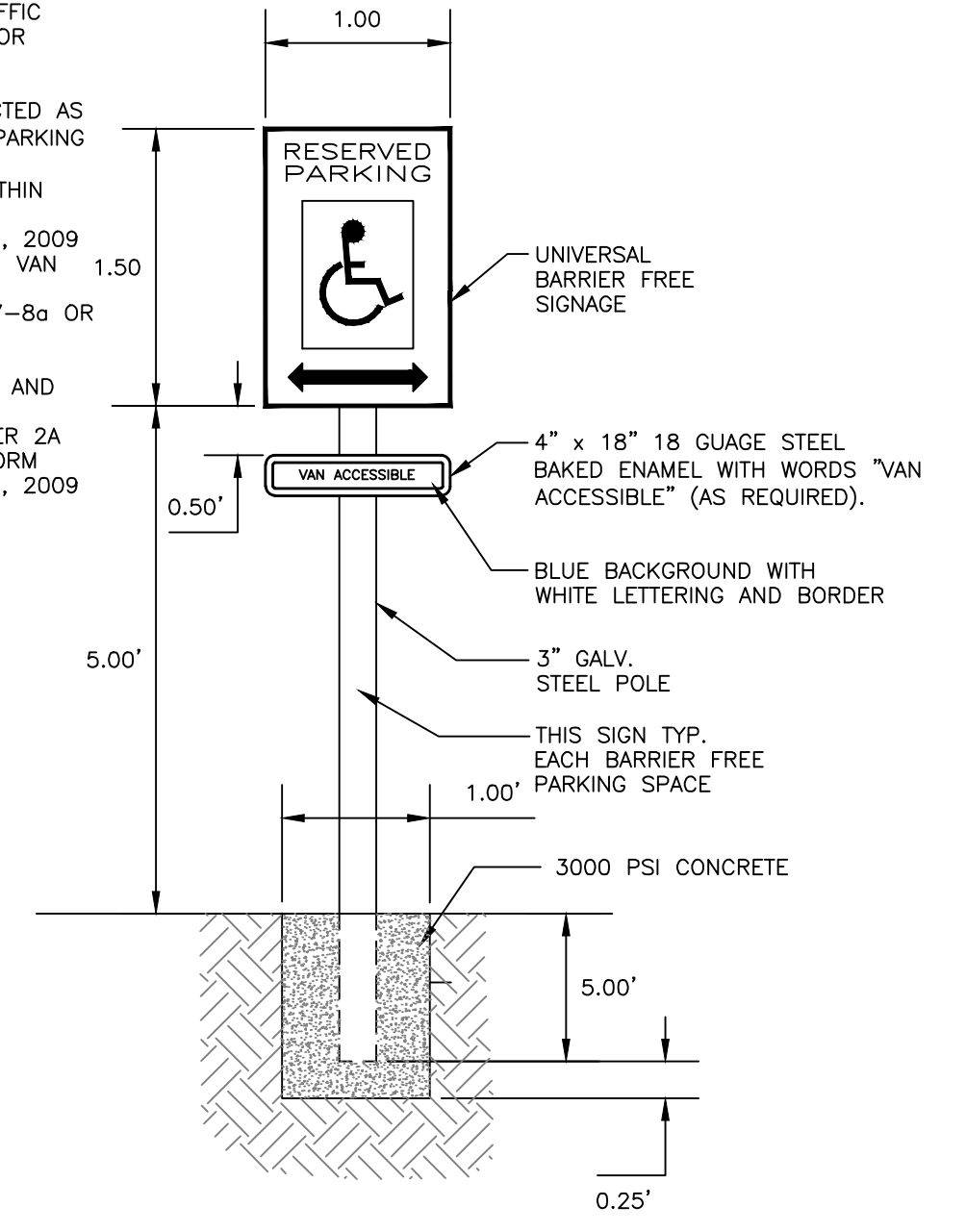
PERENNIAL PLANTING DETAIL
NOT TO SCALE



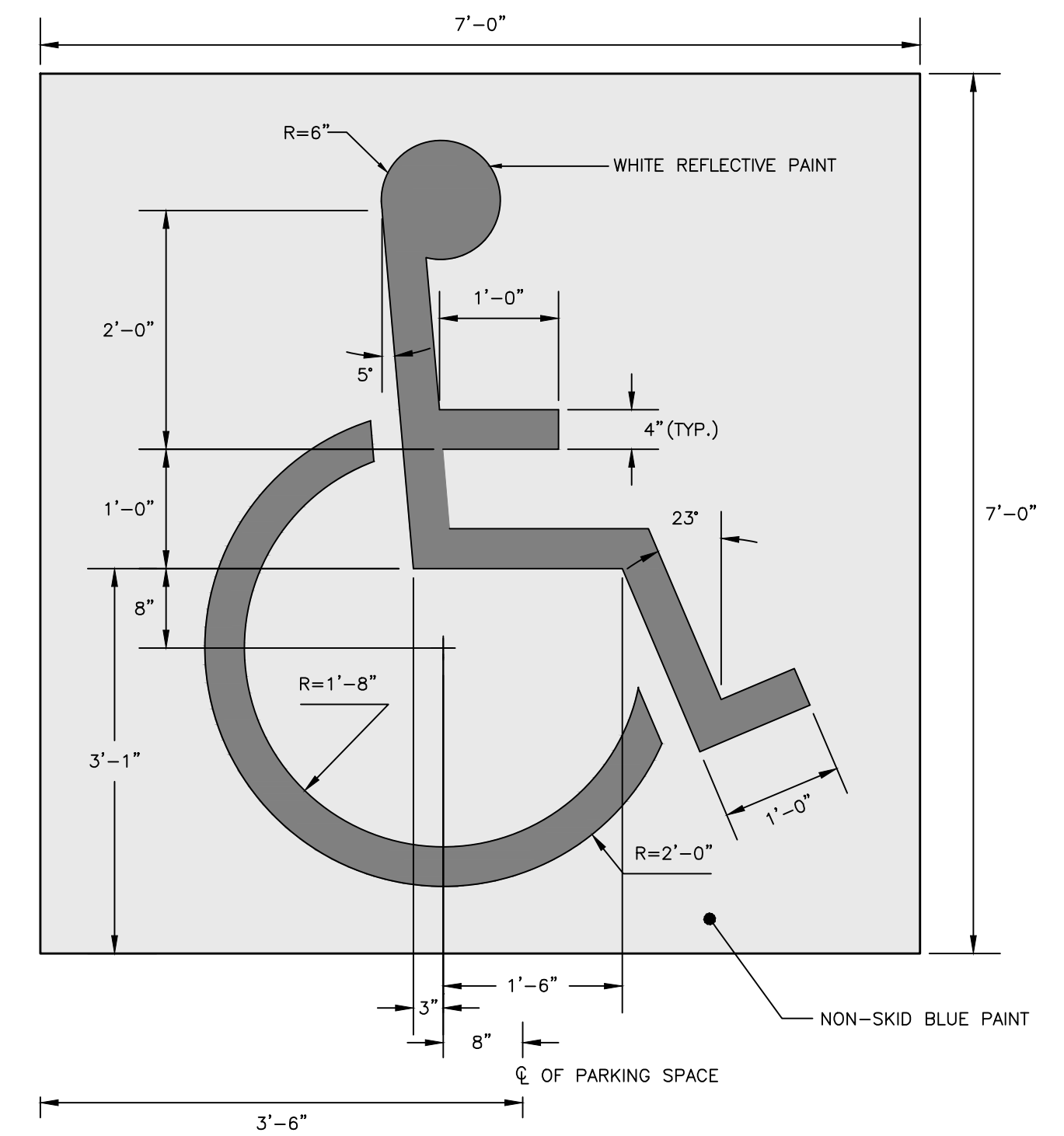
PARKING SPACE DIMENSIONS
NOT TO SCALE

NOTES:

1. ALL ASPECTS OF RESERVED PARKING SIGN CONSTRUCTION SHALL BE IN ACCORDANCE WITH MANUAL ON UNIFORM TRAFFIC CONTROL DEVICES, 2009 OR MOST RECENT EDITION.
2. SIGN SHALL BE CONSTRUCTED AS SIGN R7-8 UNDER THE "PARKING AND STANDING SIGNS AND PLAQUES" (R7 SERIES) WITHIN THE MANUAL ON UNIFORM TRAFFIC CONTROL DEVICES, 2009 OR MOST RECENT EDITION. VAN ACCESSIBILITY SHALL BE CONSTRUCTED AS SIGN R7-8a OR R7-8b.
3. SIGN POST CONSTRUCTION AND MOUNTING SHALL BE IN ACCORDANCE WITH CHAPTER 2A OF THE MANUAL ON UNIFORM TRAFFIC CONTROL DEVICES, 2009 OR MOST RECENT EDITION.



BARRIER FREE PARKING SIGN
NOT TO SCALE



INTERNATIONAL BARRIER FREE SYMBOL
NOT TO SCALE

PERMIT LEVEL
NOT ISSUED FOR
CONSTRUCTION

ISSUED FOR	BY
FINAL APP	WHS
COMMENT RESPONSE	WHS
BUILDING PERMIT	WHS
	DATE
	2/2/17
	5/17/17

SITE DETAILS - 2
WASHINGTON AVE. PARKING LOT REDEVELOPMENT
 CSH 123, LLC
 75 WASHINGTON AVE, SUITE 2H, PORTLAND, MAINE 04101

ENGINEERING, INC.
 ACCOR ENGINEERING, INC.
 158 BANKFOOT ST. PORTLAND, MAINE 04102
 (207) 775-2655

FILE: 1076_CIVIL
 JN: 1076
 SCALE: NTS
 DESIGNED BY: WHS
 DRAWN BY: OJD
 CHECKED BY: WHS



DRAWING NO.
C-41