

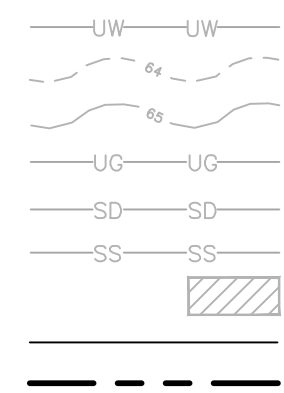
WASHINGTON AVE. PARKING LOT REDEVELOPMENT

CSH 123, LLC
PORTLAND, MAINE

LEGEND

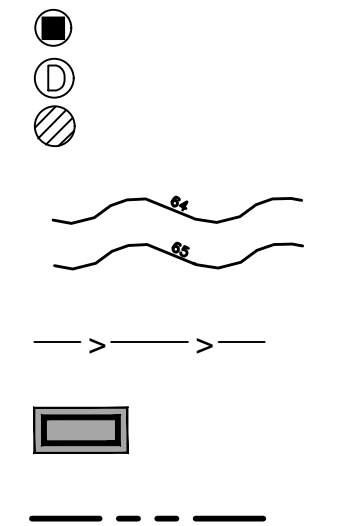
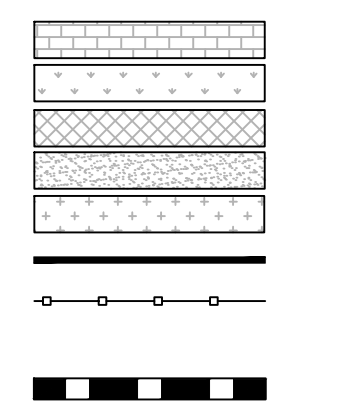
EXISTING

REFER TO THE EXISTING CONDITIONS PLAN FOR ADDITIONAL INFORMATION



- UNDERDRAIN
- BRICK SIDEWALK
- LANDSCAPED AREAS
- RESURFACED GRAVEL
- RESURFACED PAVEMENT
- NEW PAVEMENT
- STRIPING
- SEDIMENTATION BARRIER
- EDGE OF EX. PAVEMENT
- CURB
- SIGN
- LAMP OR LIGHT POLE
- UTILITY POLE
- GUY WIRE
- WATER VALVE
- FIRE HYDRANT
- SEWER MANHOLE
- CATCH BASIN
- DRAIN MANHOLE
- DRAIN INLET
- UNDERGROUND WATER LINE
- MINOR CONTOURS (1FT)
- MAJOR CONTOURS (5FT)
- GAS LINE
- STORM DRAIN LINE
- SEWER LINE
- EXISTING BUILDING
- OVERHEAD ELECTRICAL/TELEPHONE/CABLE
- PROPERTY LINE

PROPOSED



UTILITIES

SEWER:

DEPARTMENT OF PUBLIC WORKS (DPW)
55 PORTLAND STREET
PORTLAND, MAINE 04101
CONTACT: BRAD ROLAND, P.E.
(207) 874-8846

WATER:

PORTLAND WATER DISTRICT
225 DOUGLASS STREET
PO BOX 3553
PORTLAND, MAINE 04104
ATTN: MEANS DIVISION
(207) 774-5961

ELECTRIC:

CENTRAL MAINE POWER COMPANY (CMP)
162 CANCO ROAD
PORTLAND, MAINE 04103
CONTACT: PAUL DUPERRE
(207) 828-2882

TELEPHONE:

FAIRPOINT COMMUNICATIONS
45 FOREST AVENUE
PORTLAND MAINE 04101
CONTACT: SCOTT DERRIG
(207) 797-1866

CABLE:

CHARTER COMMUNICATIONS
(FORMERLY TIME WARNER CABLE)
118 JOHNSON ROAD
PORTLAND, MAINE, 04102
CONTACT: MARK PELLETIER
(877) 546-0962

NATURAL GAS:

UNITIL SERVICE CORP
1075 FOREST AVENUE
PORTLAND, ME 04103
CONTACT: KELLY FOWLER
(207) 541-2505

PROJECT TEAM

DEVELOPER:

CSH 123, LLC
PORTLAND, MAINE
CONTACT: JED HARRIS
(207) 653-8262

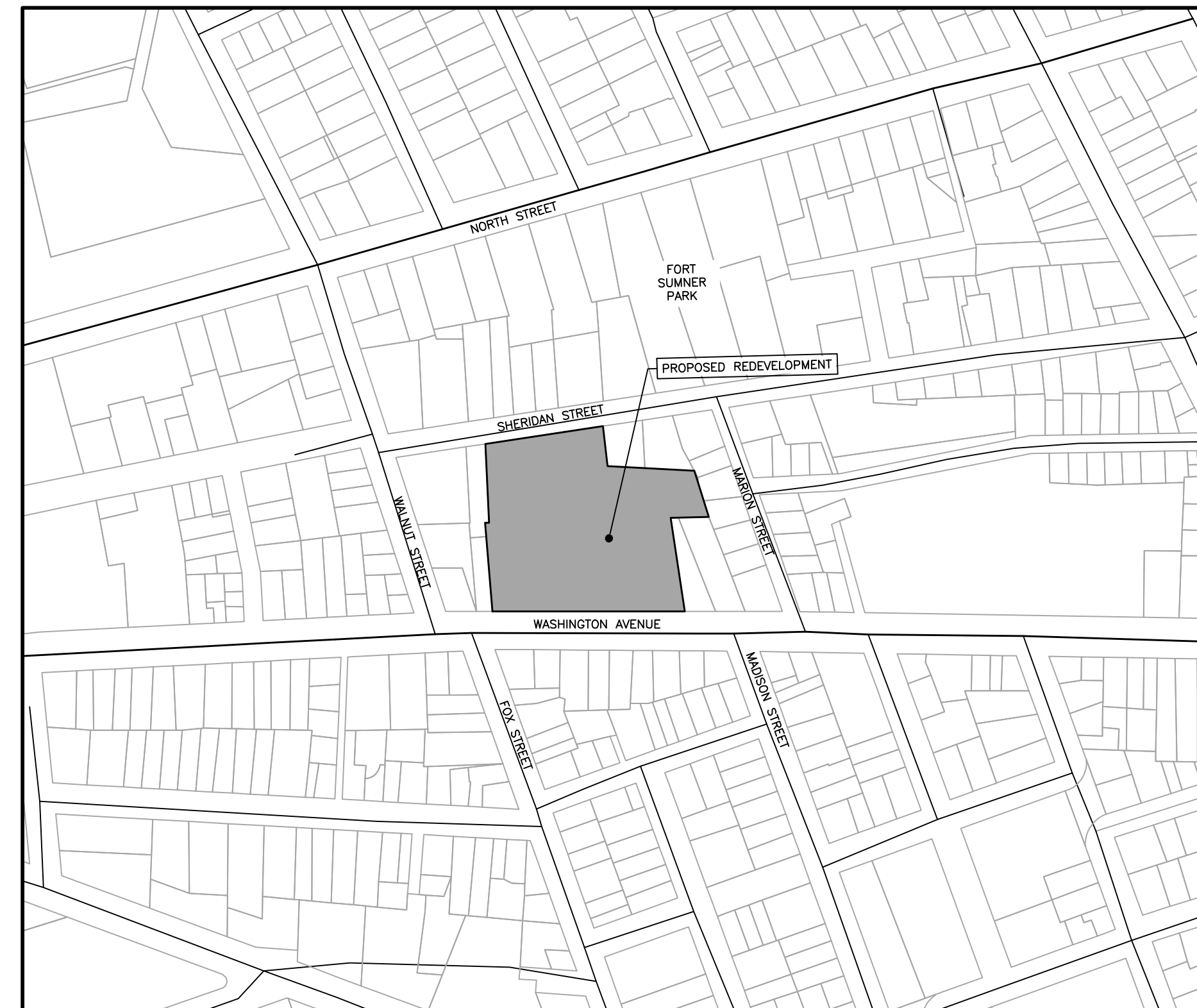
SURVEYOR:

TITCOMB ASSOCIATES
PORTLAND, MAINE
CONTACT: NICK ELLISTON P.L.S.
(207) 797-9199

ABBREVIATIONS

PARTIAL LIST OF ABBREVIATIONS AND THEIR CORRESPONDING MEANING. PLEASE CONTACT THE ENGINEER FOR ANY CLARIFICATION

APPROX.	APPROXIMATE
BC	BOTTOM OF CURB
BMP	BEST MANAGEMENT PRACTICE
BOT.	BOTTOM
CB	CATCH BASIN
CF	CUBIC FOOT
CIP	CAST IN PLACE
CM	CONSTRUCTION MANAGER
CMP	CENTRAL MAINE POWER
CONC.	CONCRETE
CY	CUBIC YARD
DIP	DUCTILE IRON PIPE
DIA.	DIAMETER
DIM.	DIMENSION
EA.	EACH
ELEC.	ELECTRICAL
ELEV.	ELEVATION
EQUIV.	EQUIVALENT
EST.	ESTIMATE
EX.	EXISTING
FFE	FINISH FLOOR ELEVATION
FT.	FEET
GAL.	GALVANIZED
ID	INNER DIAMETER
IN.	INCH
INV.	INVERT
L	LENGTH
MAX.	MAXIMUM
MDOT	MAINE DEPARTMENT OF TRANSPORTATION
MFG.	MANUFACTURED
MH	MANHOLE
MIN.	MINIMUM
OD	OUTSIDE DIAMETER
OHE/T/C	OVERHEAD ELECTRICAL/TELEPHONE/CABLE
PC	PRECAST
PE	PROFESSIONAL ENGINEER
PL	PROPERTY LINE
PLS	PROFESSIONAL LAND SURVEYOR
PROP.	PROPOSED
PSI	POUNDS PER SQUARE INCH
PVC	POLYVINYL CHLORIDE
R	RADIUS
RD	ROOF DRAIN
RET.	RETAINING
ROW	RIGHT OF WAY
S	SLOPE
SD	STORM DRAIN
SDR	STANDARD DIMENSION RATIO
SF	SQUARE FEET
SMH	SEWER MANHOLE
SPEC.	SPECIFICATION
TC	TOP OF CURB
TW	TOP OF WALL
TWC	TIME WARNER CABLE
TYP.	TYPICAL
UD	UNDERDRAIN
UGE	UNDERGROUND ELECTRIC



VICINITY MAP
1"=200'

INDEX

- C-01 COVER SHEET & LEGEND
- C-02 GENERAL NOTES
- EX EXISTING CONDITIONS PLAN
- C-10 SITE LAYOUT & LANDSCAPE PLAN
- C-20 UTILITY PLAN
- C-30 GRADING, DRAINAGE, & EROSION CONTROL PLAN
- C-40 SITE DETAILS - 1
- C-41 SITE DETAILS - 2
- C-42 DRAINAGE DETAILS
- C-43 EROSION CONTROL DETAILS & NOTES

CALL BEFORE YOU DIG
1-888-DIG-SAFE
1-888-344-7233

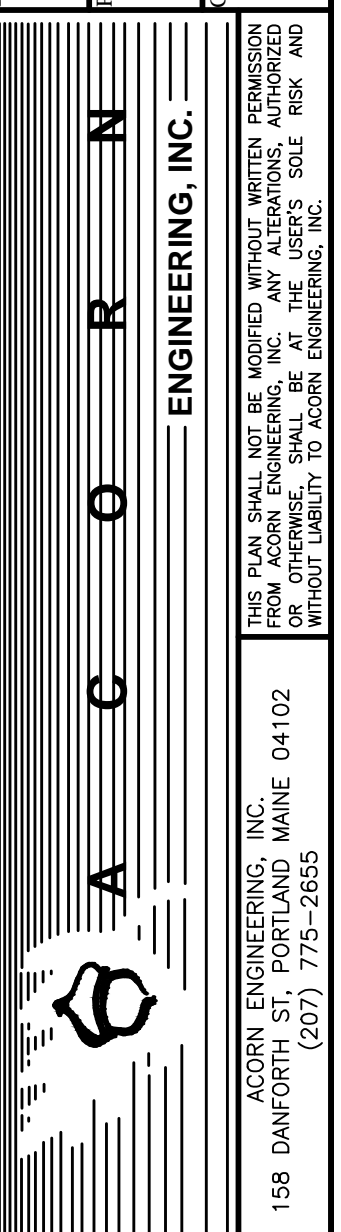
PERMIT LEVEL
NOT ISSUED FOR
CONSTRUCTION

ISSUED FOR	BY	DATE
FINAL APP	WHS	2/3/17
COMMENT RESPONSE	WHS	2/3/17
BUILDING PERMIT	WHS	2/17/17

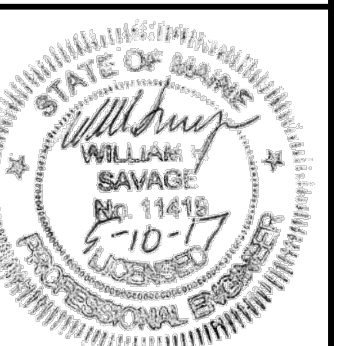
PDRAWING NAME:
PROJECT NAME:
CLIENT:

COVER SHEET & LEGEND
WASHINGTON AVE. PARKING LOT REDEVELOPMENT

CSH 123, LLC
75 WASHINGTON AVE, SUITE 2H, PORTLAND, MAINE 04101



FILE: 1076_CIVIL
JN: 1076
SCALE: NTS
DESIGNED BY: WHS
DRAWN BY: OJD
CHECKED BY: WHS



DRAWING NO.
C-01