

GENERAL NOTES:

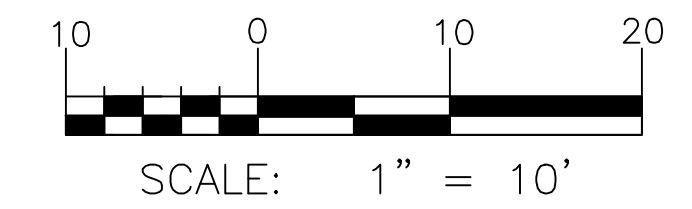
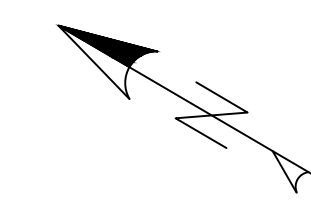
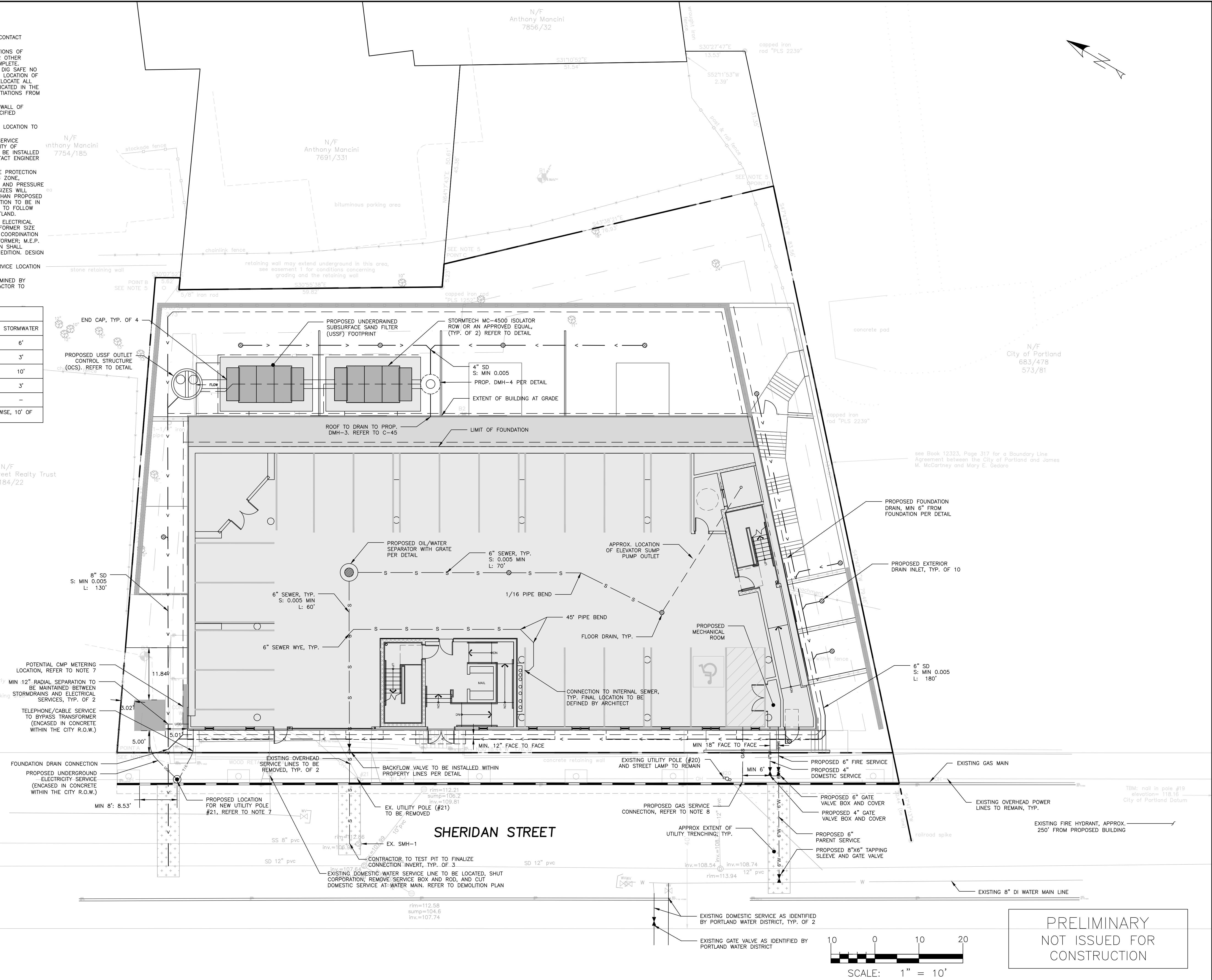
1. LOCATION OF PROPOSED CONNECTIONS ARE APPROXIMATE. CONTRACTOR TO CONTACT ENGINEER IF FIELD INFORMATION VARIES FROM INFORMATION ON PLANS.
2. CONTRACTOR IS TO BE CAUTIONED THAT CERTAIN LOCATIONS AND/OR ELEVATIONS OF EXISTING UTILITIES HAVE BEEN PROVIDED THROUGH UTILITY COORDINATION OR OTHER OBSERVATIONS. INFORMATION IS NOT TO BE RELIED UPON AS EXACT OR COMPLETE. CONTRACTOR TO FIELD VERIFY AND COORDINATE WITH UTILITY COMPANY AND DIG SAFE NO LESS THAN 72 HOURS PRIOR TO ANY EXCAVATION TO REQUEST EXACT FIELD LOCATION OF ALL UTILITIES. IT SHALL BE THE RESPONSIBILITY OF THE CONTRACTOR TO RELOCATE ALL EXISTING UTILITIES WHICH CONFLICT WITH THE PROPOSED IMPROVEMENTS INDICATED IN THE CONTRACT DOCUMENTS. CONTRACTOR TO NOTIFY ENGINEER OF ANY DIFFERENTIATIONS FROM EXISTING CONDITIONS, INCLUDING UTILITY SURVEY, PRIOR TO ANY CHANGES.
3. FOR ALL UTILITIES, ACORN ENGINEERING DESIGN LIMITS EXTEND TO OUTSIDE WALL OF BUILDING. METERING OF UTILITIES TO BE COMPLETED BY M.E.P. UNLESS SPECIFIED OTHERWISE.
4. CONTRACTOR TO COORDINATE WITH ARCHITECT ON FINAL UTILITY CONNECTION LOCATION TO EACH RESIDENTIAL UNIT.
5. SEWER UTILITIES: CONTRACTOR TO COORDINATE WITH ARCHITECT FOR FINAL SERVICE CONNECTION. SEWER UTILITIES TO BE CONSTRUCTED IN ACCORDANCE WITH CITY OF PORTLAND TECHNICAL STANDARDS. VALVE FOR BACKFLOW PREVENTION SHALL BE INSTALLED WITHIN THE PROPERTY LINES FOR EACH CITY SEWER CONNECTION. CONTACT ENGINEER IF FIELD CONDITIONS FROM INVERT VARY FROM DESIGN.
6. WATER UTILITIES: FINAL PIPE SIZING PROVIDED BY M.E.P. ENGINEER AND FIRE PROTECTION DESIGNER. WATER SERVICE VALVES TO BE INSTALLED WITHIN THE FURNISHING ZONE. APPROX. 3' FROM CURB FACE. INTERNAL METERING, BACKFLOW PREVENTION, AND PRESSURE REDUCERS TO BE COMPLETED BY M.E.P. ENGINEER. DOMESTIC WATER PIPE SIZES WILL DETERMINE THE FINAL WATER METERING OPTIONS. METER MAY BE SMALLER THAN PROPOSED WATER MAIN. WATER METERING, PRESSURE REDUCER AND BACKFLOW PREVENTION TO BE IN ACCORDANCE WITH THE PORTLAND WATER DISTRICT STANDARDS. CONTRACTOR TO FOLLOW METERING GUIDELINES OF THE PORTLAND WATER DISTRICT AND CITY OF PORTLAND.
7. ELECTRIC UTILITIES: ELECTRIC DESIGN TO BE FINALIZED BY M.E.P. ENGINEER. ELECTRICAL LOAD TO BE DETERMINED BY M.E.P. ENGINEER. METER LOCATION AND TRANSFORMER SIZE DEFINED BY M.E.P. FINAL UTILITY POLE #21 LOCATION TO BE DEFINED WITH COORDINATION AND APPROVAL FROM CMP. TELEPHONE/CABLE SERVICES TO BYPASS TRANSFORMER; M.E.P. TO FINALIZE SERVICE CONNECTION TO BUILDING. ALL ELECTRIC CONSTRUCTION SHALL CONFORM TO CMP GUIDEBOOK OF STANDARD REQUIREMENTS, MOST RECENT EDITION. DESIGN SUBJECT TO FINAL APPROVAL FROM CMP.
8. GAS UTILITIES: PROJECT GAS LOAD, GAS UTILITY DESIGN, AND FINAL GAS SERVICE LOCATION AND METERS TO BE DEFINED BY M.E.P.
9. CABLE AND TELEPHONE PULLBOXES AND PEDESTAL LOCATIONS TO BE DETERMINED BY CHARTER COMMUNICATIONS AND FAIRPOINT PRIOR TO CONSTRUCTION. CONTRACTOR TO COORDINATE.

MINIMUM HORIZONTAL UTILITY SEPARATION					
UTILITY	UGE/T/C	WATER	SEWER	GAS	STORMWATER
UGE/T/C	-	6'	5'	4'	6'
WATER	6'	-	5*	6'	3'
SEWER	5'	5*	-	5'	10'
GAS	4'	6'	5'	-	3'
STORMWATER	6'	3'	10'	3'	-

*PERMISSIBLE ONLY IF SEWER IS LAID MIN. 18" BELOW WATER SERVICE; OTHERWISE, 10' OF HORIZONTAL SEPARATION MUST BE MAINTAINED.

STRUCTURE SCHEDULE			
STRUCTURE	RIM	INV. IN	INV. OUT
OWS	111.20'	TBD	TBD
EX. SMH-1*	112.86'	-	106.96'
EX. SMH-2*	112.12'	103.82'	-

* EXISTING STRUCTURES AS DEFINED BY THE EXISTING CONDITIONS SURVEY DATED MARCH 4, 2016 BY TITCOMB ASSOCIATES



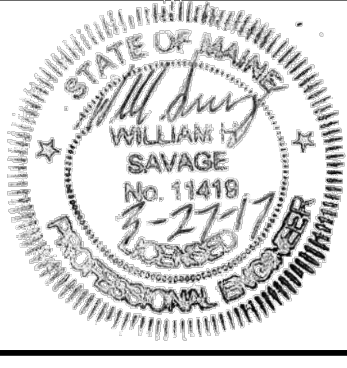
PRELIMINARY
NOT ISSUED FOR
CONSTRUCTION

ISSUED FOR	BY
PRELIM. APP.	WHS
	3/28/17

UTILITY PLAN
PROJECT NAME: 155 SHERIDAN STREET
CLIENT: VAZZA REAL ESTATE GROUP
BD SHERIDAN, LLC
1266 FURNACE BROOK PARKWAY SUITE 300 QUINCY, MA 02169

ACORN ENGINEERING, INC.
158 BANKFOOT ST. PORTLAND, MAINE 04102
(207) 775-2655
LICENSE NO. 11416
STATE OF MAINE
WILLIAM H. SAVAGE
No. 11416
Professional Engineer

FILE: 1069_CIVIL
JN: 1069
SCALE: 1"=10'
DESIGNED BY: WHS
DRAWN BY: OUD
CHECKED BY: WHS



DRAWING NO.
C-20