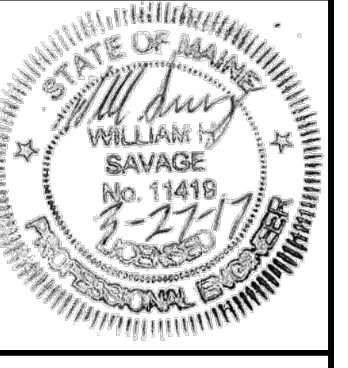


ISSUED FOR	BY
PRELIM APP	WHS
	3/28/17

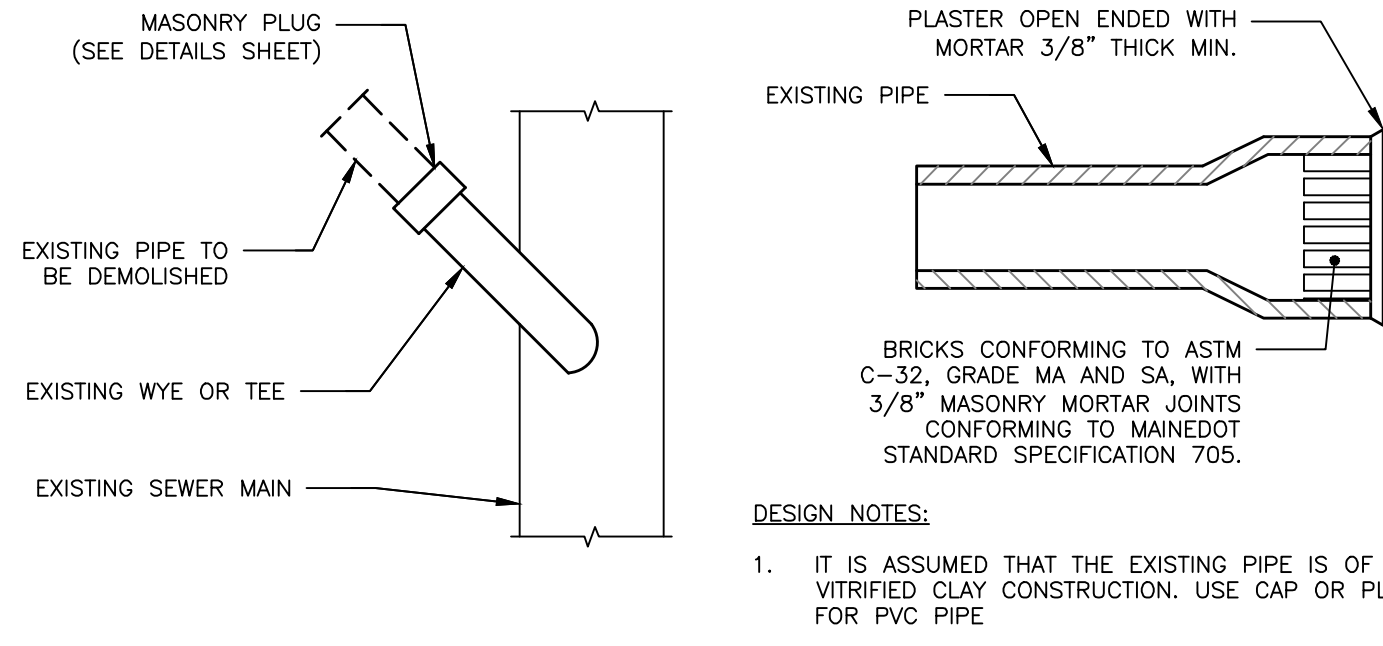
DRAINAGE DETAILS  
 155 SHERIDAN STREET  
 VAZZA REAL ESTATE GROUP  
 BD SHERIDAN, LLC  
 1266 FURNACE BROOK PARKWAY SUITE 300 QUINCY, ILL. 02169

ENGINEERING, INC.  
 A C O R N  
 158 BANKFOUN ST. PORTLAND, MAINE 04102  
 (207) 775-2655

FILE: CIVIL\_1069  
 JN: 1069  
 SCALE: NTS  
 DESIGNED BY: WHS  
 DRAWN BY: SJL  
 CHECKED BY: WHS

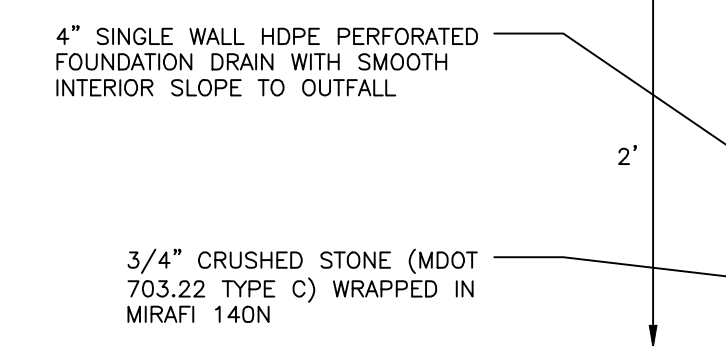


DRAWING NO.  
**C-43**

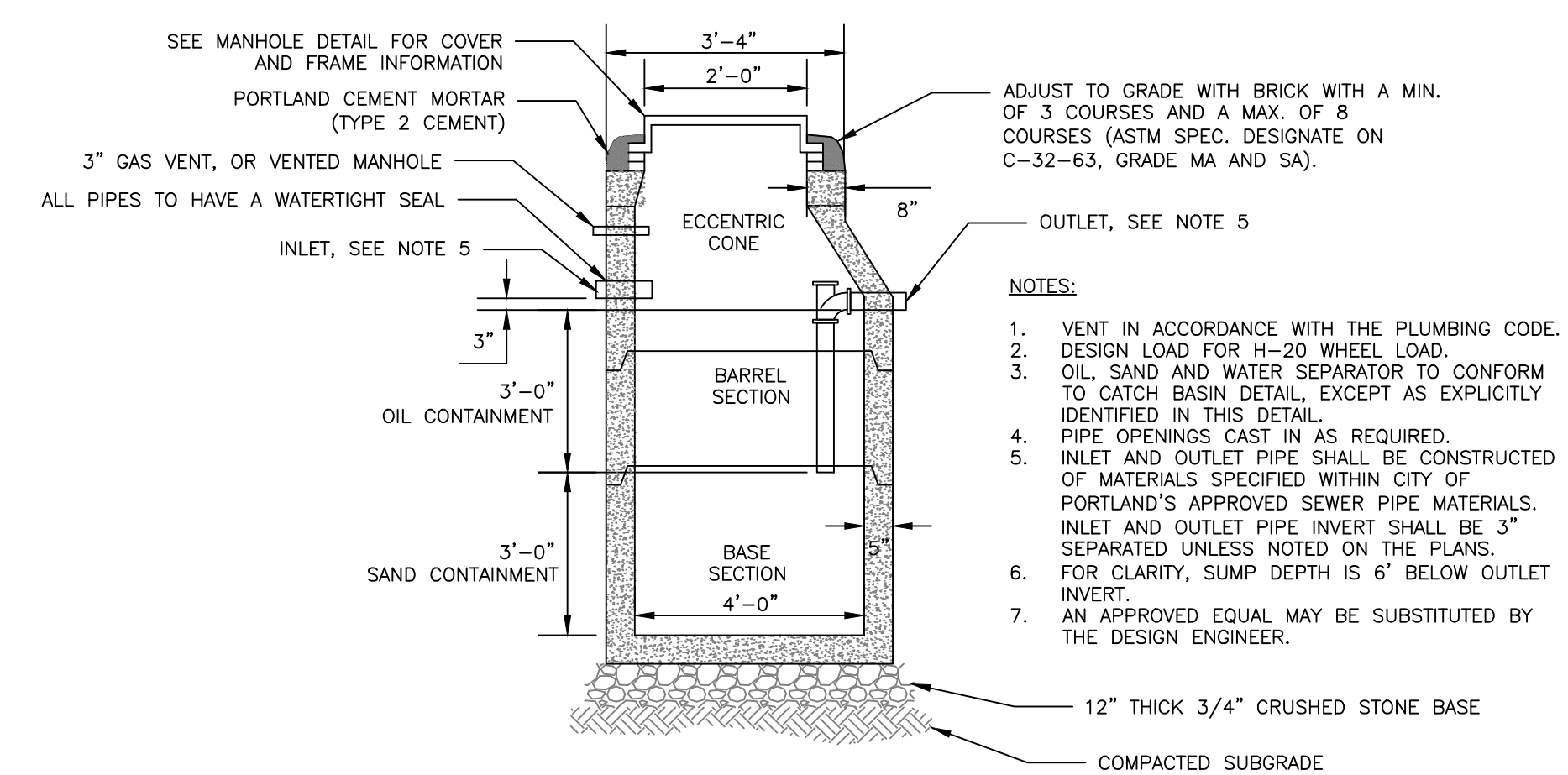


**MASONRY PLUG DETAIL**  
 NOT TO SCALE

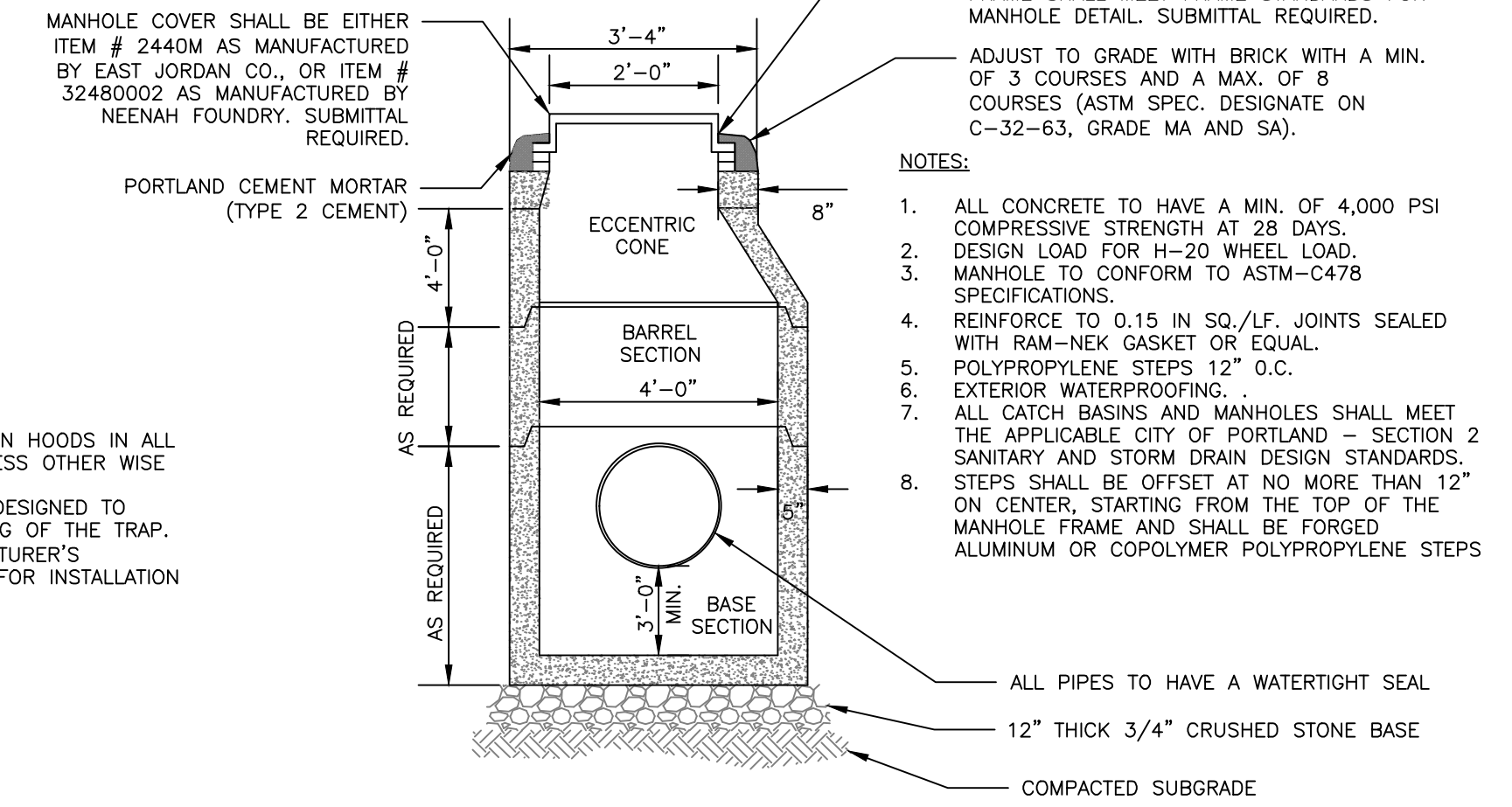
- NOTES:**
1. REFER TO THE BUILDING ARCHITECTS PLANS FOR THE BUILDING FOUNDATION, BACKFILL, ROOF DRAIN, SIDEWALK AND OTHER DETAILS.
  2. PERFORATIONS IN UNDERDRAIN PIPE SHALL BE ORIENTED DOWN.



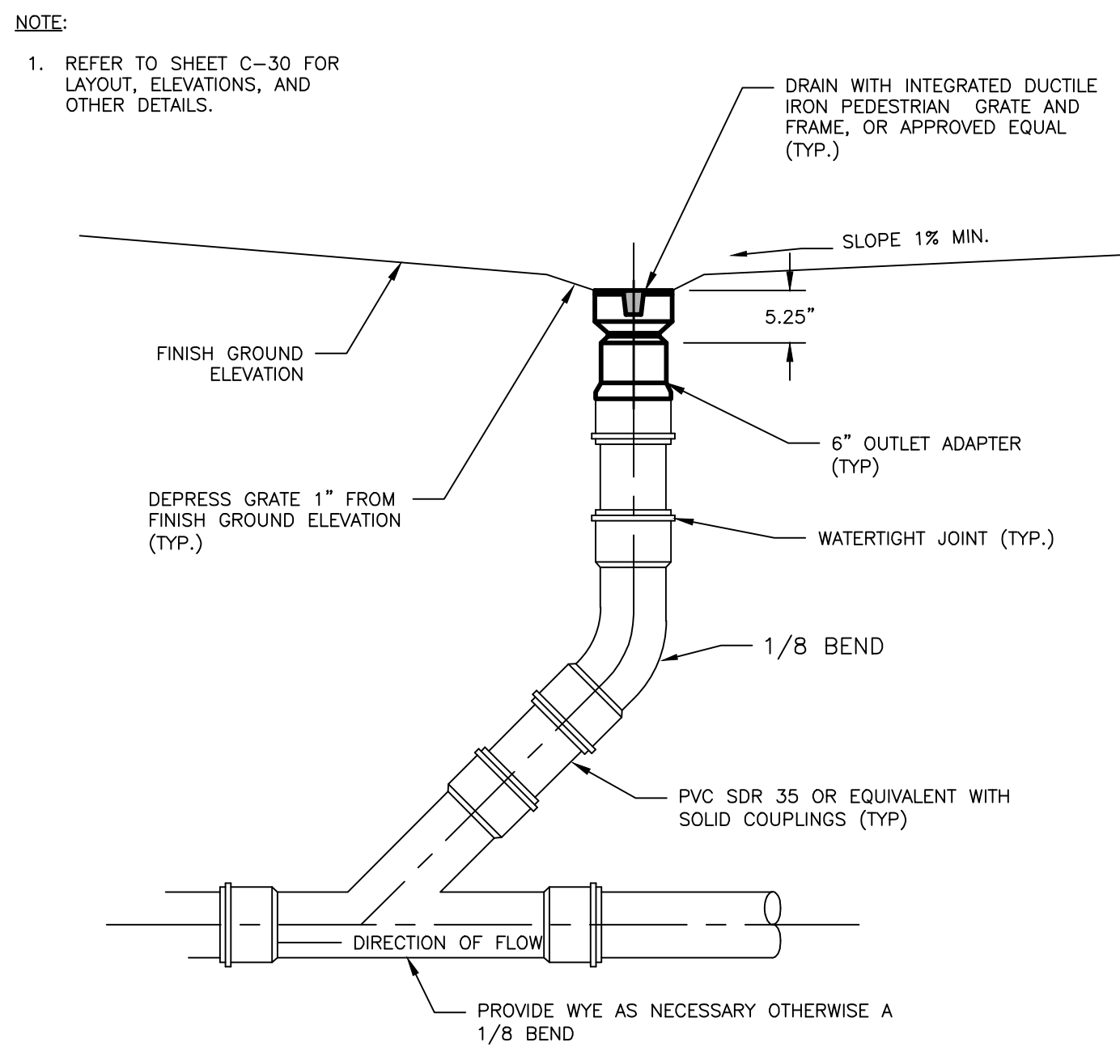
**FOUNDATION DRAIN DETAIL**  
 NOT TO SCALE



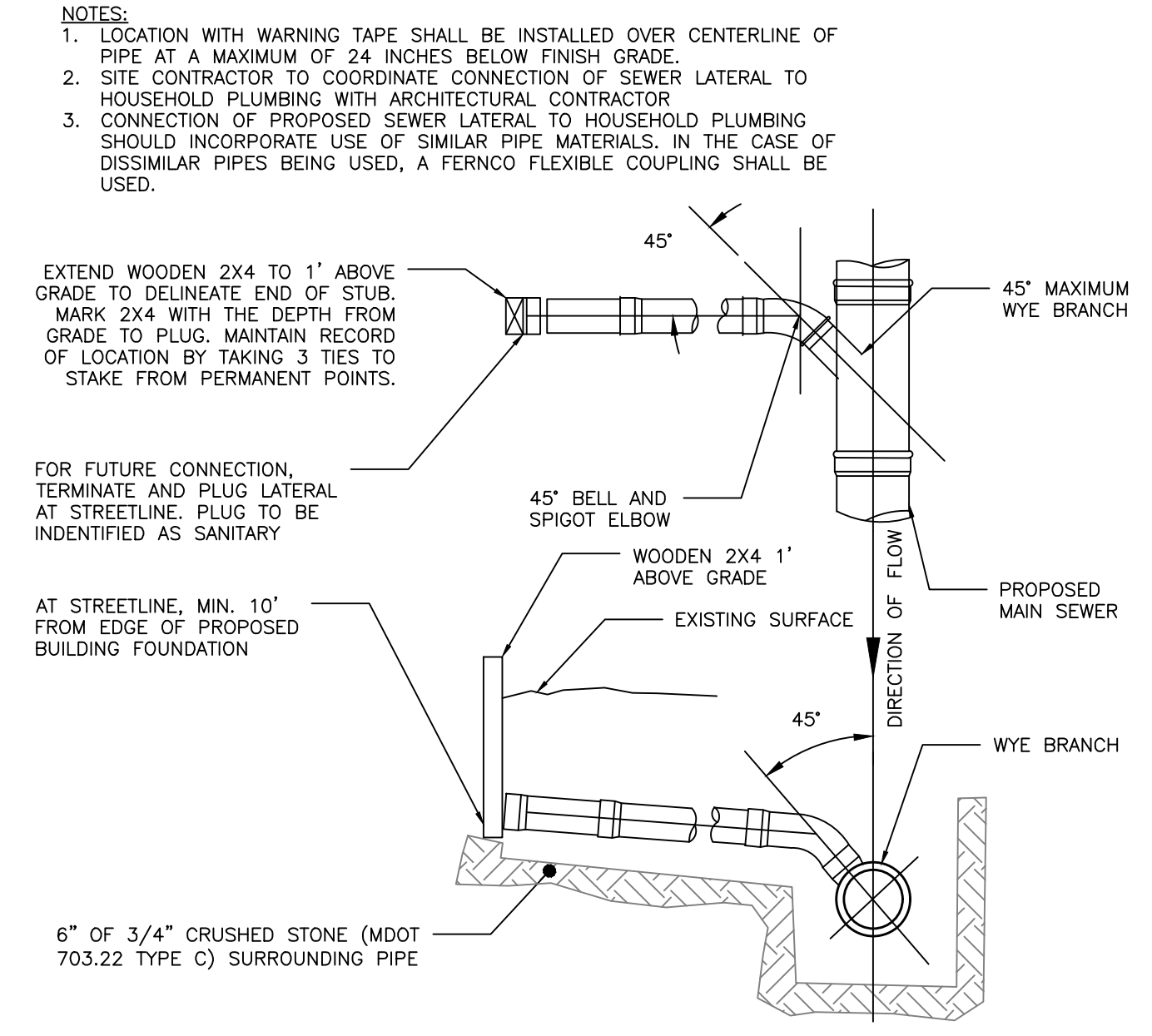
**4'-0" DIAMETER PRECAST OIL AND WATER SEPARATOR**  
 NOT TO SCALE



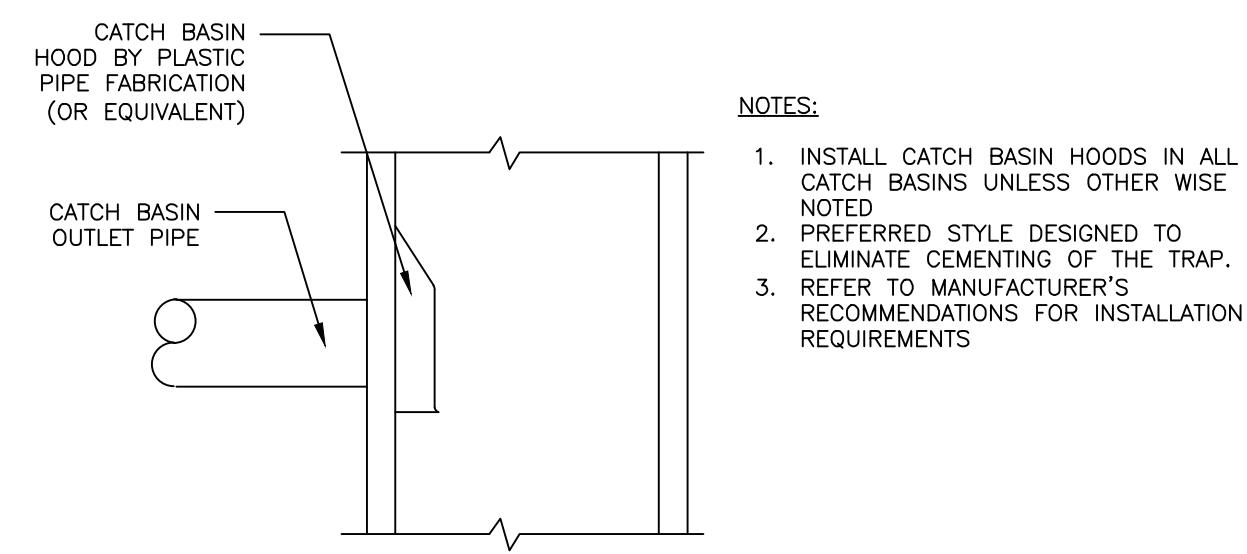
**4'-0" DIAMETER PRECAST DRAINAGE MANHOLE**  
 NOT TO SCALE



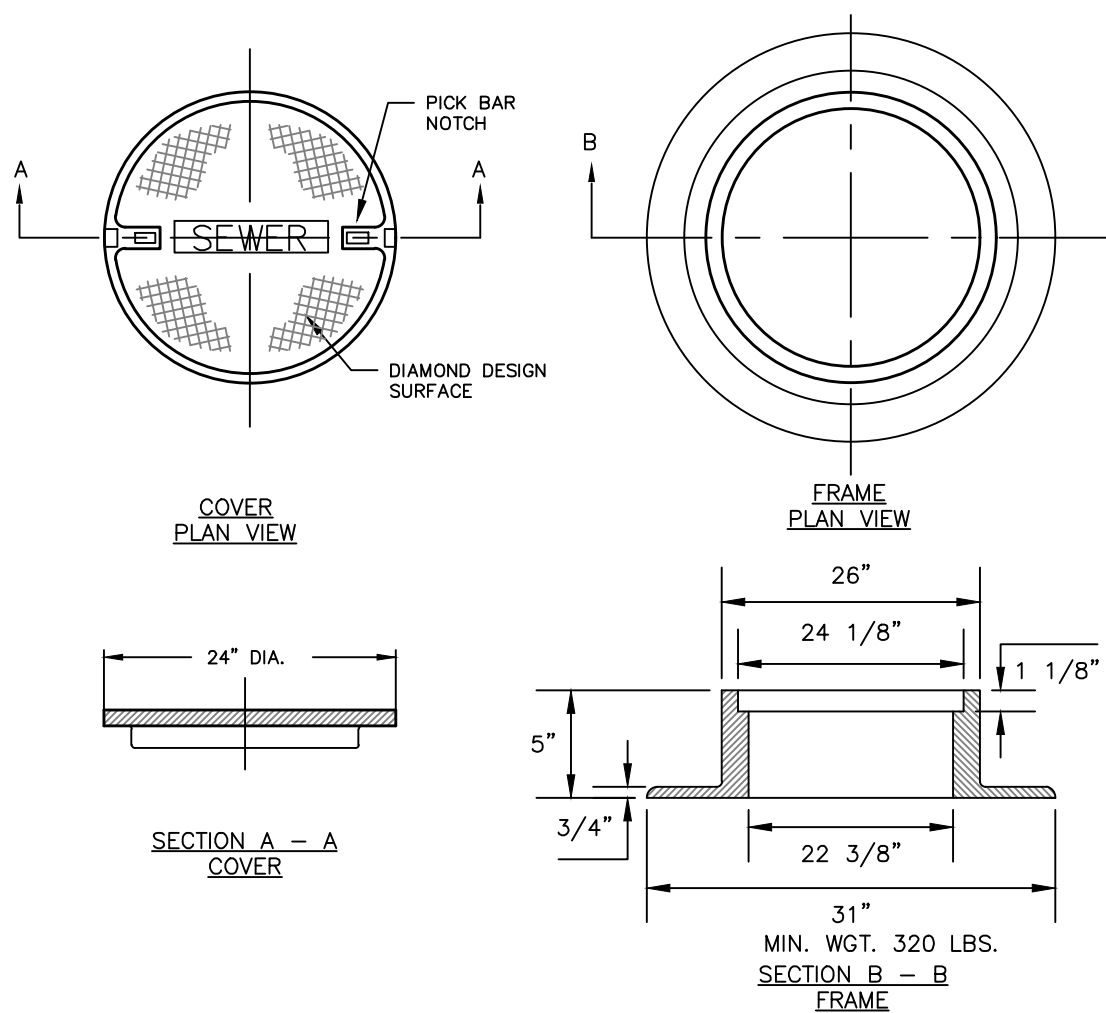
**INLINE DRAIN DETAIL**  
 NOT TO SCALE



**SEWER TEE/WYE CONNECTION DETAIL**  
 NOT TO SCALE

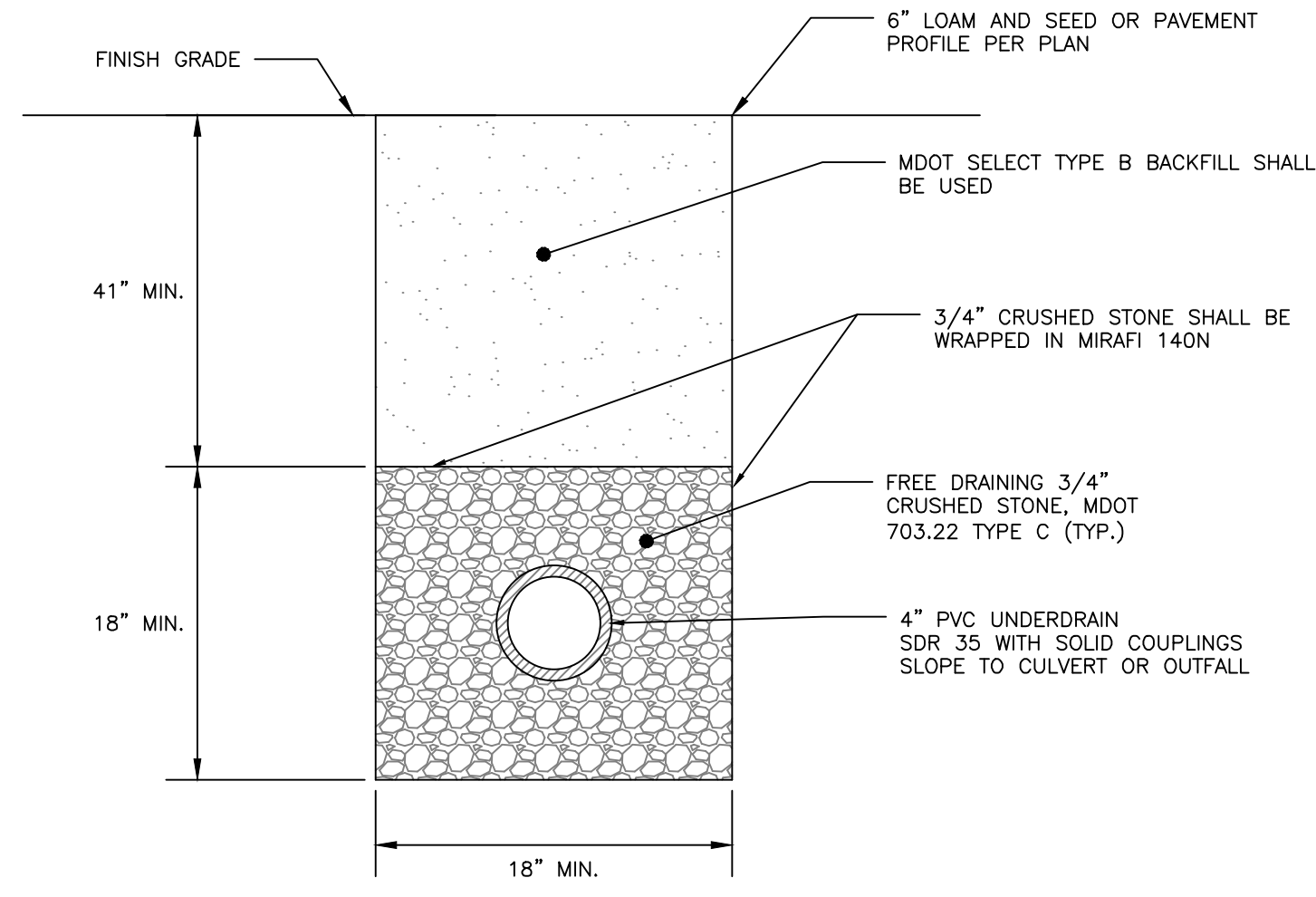


**CATCH BASIN HOOD DETAIL**  
 NOT TO SCALE



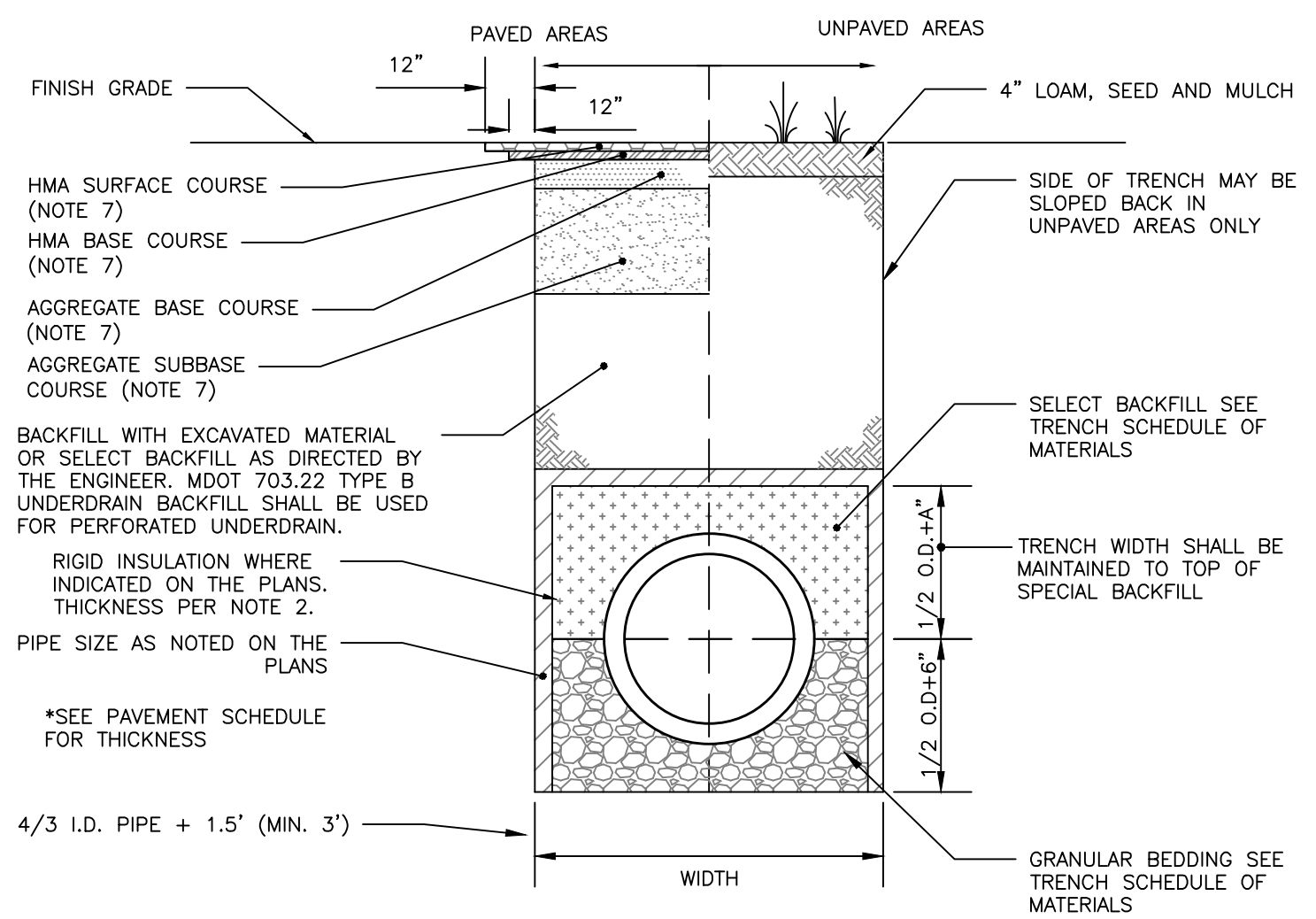
**CAST IRON MANHOLE COVER AND FRAME**  
 NOT TO SCALE

- NOTES:**
1. ALL SANITARY AND STORMWATER/RAIN MANHOLE COVERS SHALL BE 24" x 5"
  2. ALL SANITARY MANHOLE COVERS AND SHALL HAVE "SEWER" CAST INTO THE COVER.
  3. ALL STORMWATER/RAIN MANHOLE COVERS SHALL HAVE "RAIN" CAST INTO THE COVER.
  4. APPROVED MANHOLE FRAMES:  
 4.1 EAST JORDAN = 1690Z  
 4.2 OR APPROVED EQUAL
  5. APPROVED MANHOLE COVERS  
 5.1 EAST JORDAN = 2160A  
 5.2 OR APPROVED EQUAL
  6. FRAME AND COVER CONSTRUCTION SHALL BE COMPATIBLE WITH STANDARD PRECAST SEWER MANHOLE DETAIL.



- NOTES:**
1. MINIMUM UNDERDRAIN SLOPE 0.0025 (0.25%)
  2. PERFORATIONS IN UNDERDRAIN PIPE SHALL BE ORIENTED DOWN.

**UNDERDRAIN DETAIL**  
 NOT TO SCALE



**STORM DRAIN AND SEWER TYPICAL TRENCH SECTION**  
 NOT TO SCALE

SCHEDULE OF MATERIALS		
TYPE OF PIPE	GRANULAR BEDDING	SELECT BACKFILL
CMP DUCTILE IRON RCP	MDOT 703.22 TYPE B UD BACKFILL	MDOT 703.22 TYPE B UD BACKFILL
PVC/HDPE	MDOT 703.22 TYPE C 3/4\"/>	

- NOTES:**
1. BRACING AND SHEETING OR OTHER TRENCH PROTECTION TO BE PROVIDED TO MEET APPLICABLE STATE AND O.S.H.A. SAFETY STANDARDS. ALL SUCH TRENCH PROTECTION TO BE THE RESPONSIBILITY OF THE CONTRACTOR.
  2. STORM DRAIN COVER BETWEEN 2' AND 3' SHALL INCLUDE 4" OF RIGID INSULATION. COVER BETWEEN 3' AND 4' SHALL INCLUDE 2" RIGID INSULATION. OTHER UTILITIES: ADD 2" OF RIGID INSULATION FOR EACH FOOT ABOVE MINIMUM DEPTH.
  3. INSTALL WARNING TAPE DIRECTLY ABOVE UTILITIES AT THE TOP OF SUBGRADE.
  4. MINIMUM COVER  
 4.1. 2'-0" - STORM DRAIN  
 4.2. 5'-0" - SEWER
  5. NO TREES SHALL BE PLANTED WITHIN 5' OF A SEWER PIPE OR SERVICE
  6. THIS DETAIL SHALL BE APPLIED ONLY TO DRAINAGE PIPE TRENCHES OUTSIDE OF THE CITY OF PORTLAND ROW.
  7. THICKNESS AS NOTED BY SURFACE DETAILS

PRELIMINARY  
 NOT ISSUED FOR  
 CONSTRUCTION