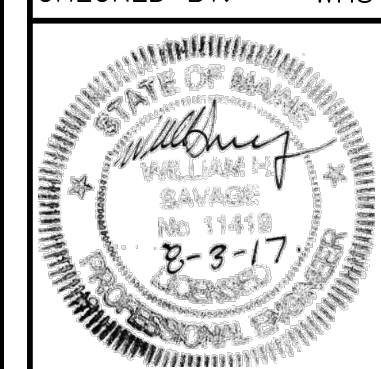


ISSUED FOR	BY
PRELIM APP	WHS
DATE	3/28/17
FINAL APP.	WHS
DATE	3/27/17

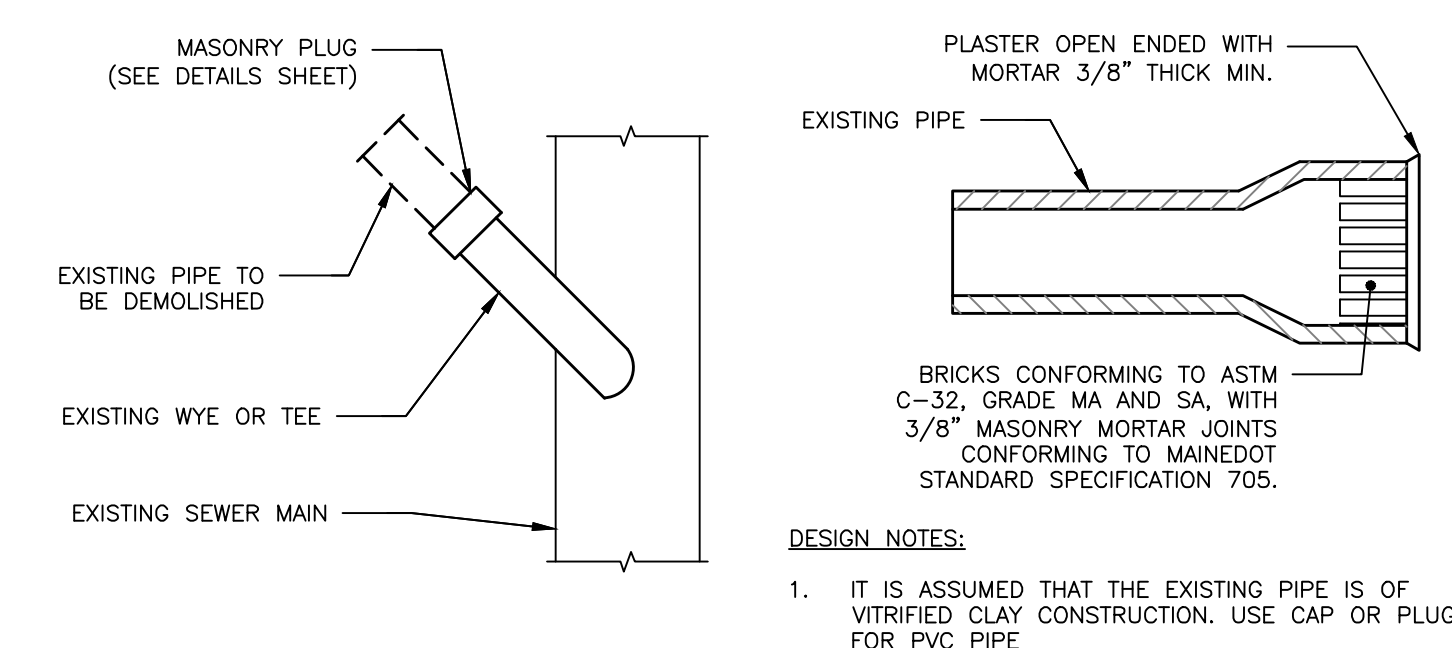
DRAINAGE DETAILS  
 155 SHERIDAN STREET  
 VAZZA REAL ESTATE GROUP  
 BD SHERIDAN, LLC  
 1266 FURNACE BROOK PARKWAY SUITE 300 QUINCY, MA 02169

ENGINEERING, INC.  
 A C O R N  
 158 BANKFOUN ST. PORTLAND, MAINE 04102  
 (207) 775-2655

FILE: CIVIL\_1069  
 JN: 1069  
 SCALE: NTS  
 DESIGNED BY: WHS  
 DRAWN BY: SJL  
 CHECKED BY: WHS

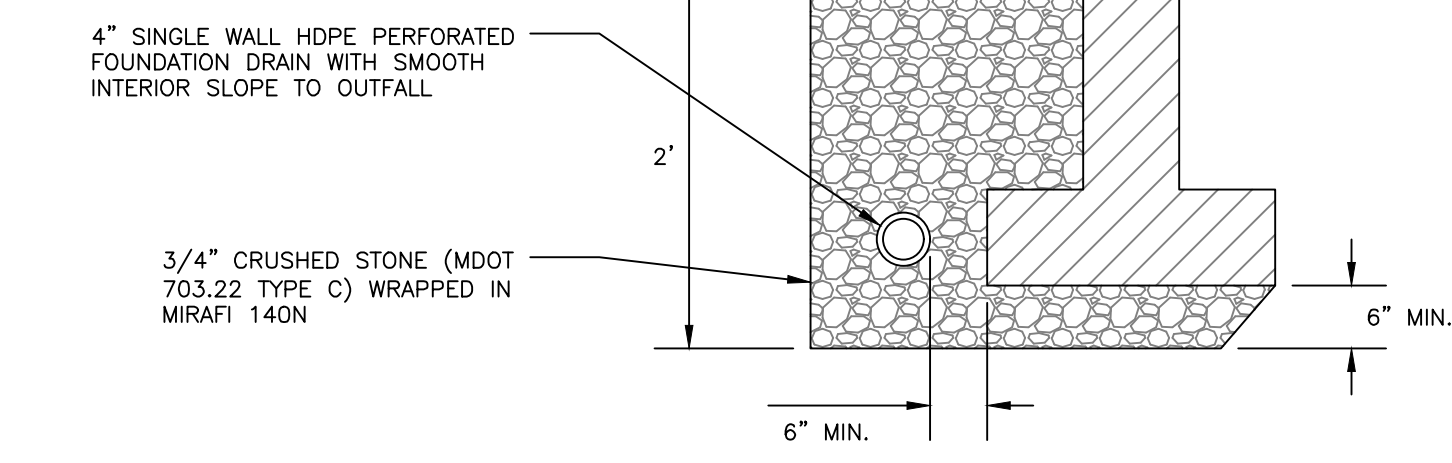


DRAWING NO.  
**C-43**

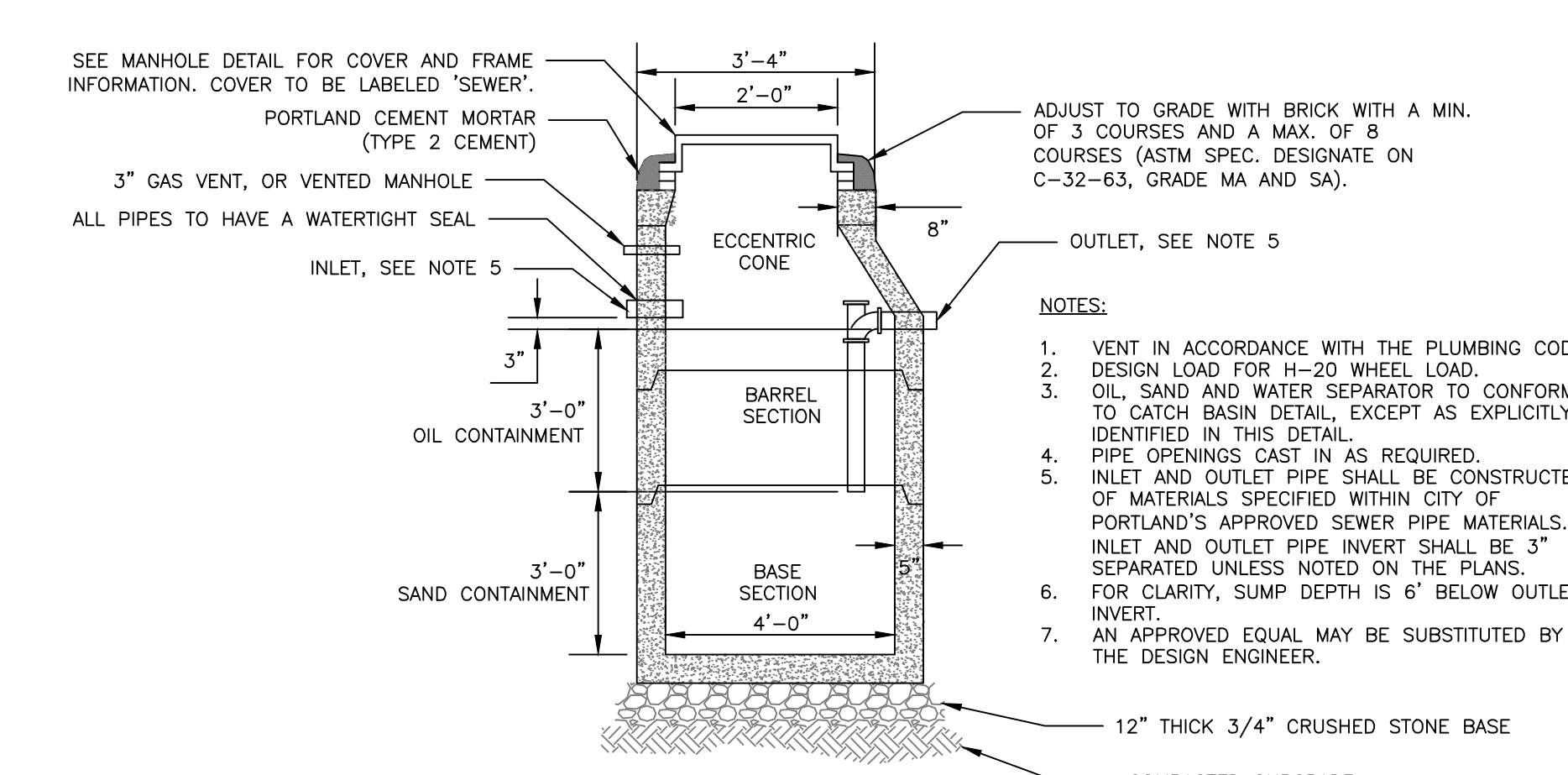


**MASONRY PLUG DETAIL**  
 NOT TO SCALE

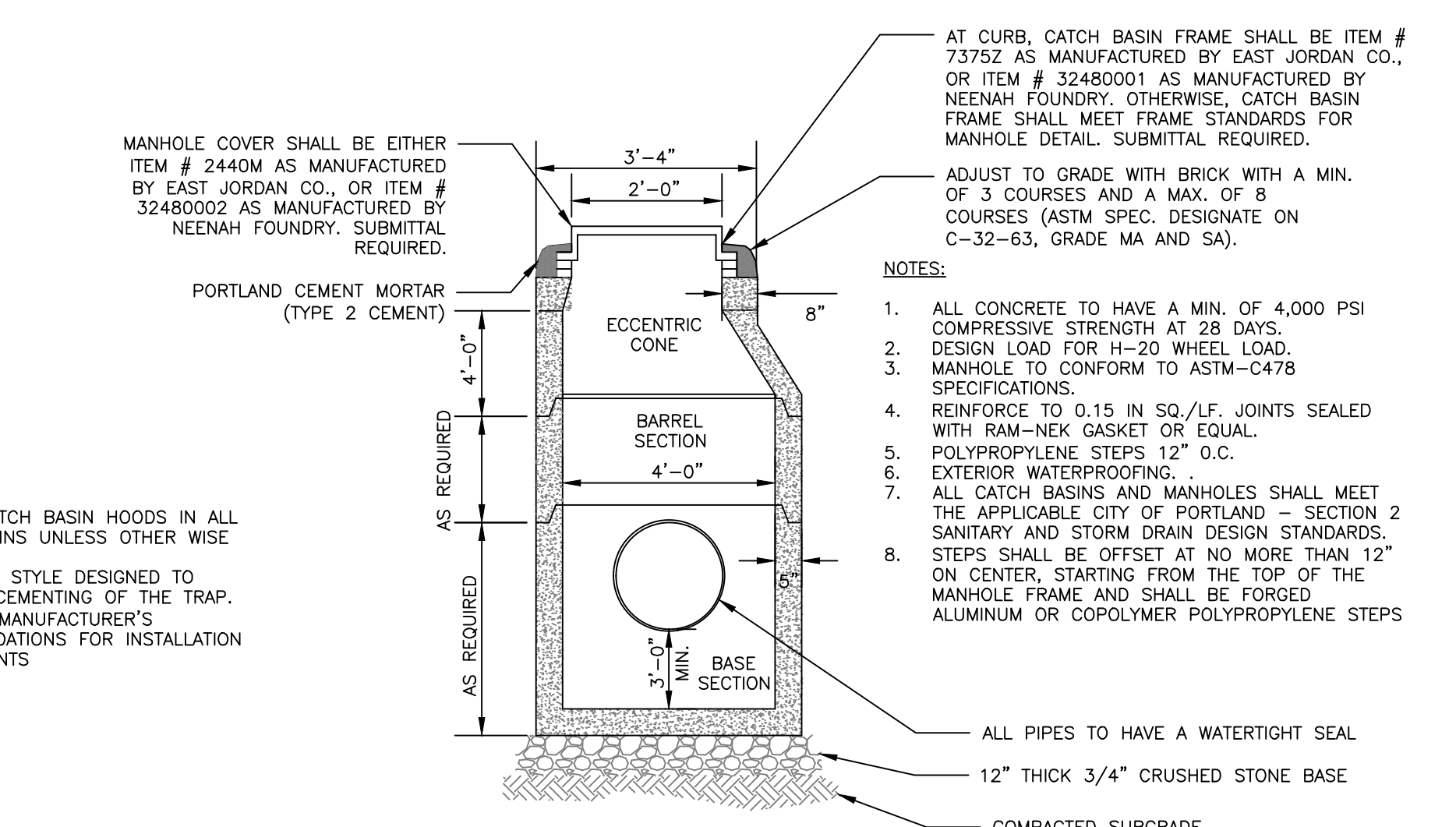
- NOTES:**
- REFER TO THE BUILDING ARCHITECTS PLANS FOR THE BUILDING FOUNDATION, BACKFILL, ROOF DRAIN, SIDEWALK AND OTHER DETAILS.
  - PERFORATIONS IN UNDERDRAIN PIPE SHALL BE ORIENTED DOWN.



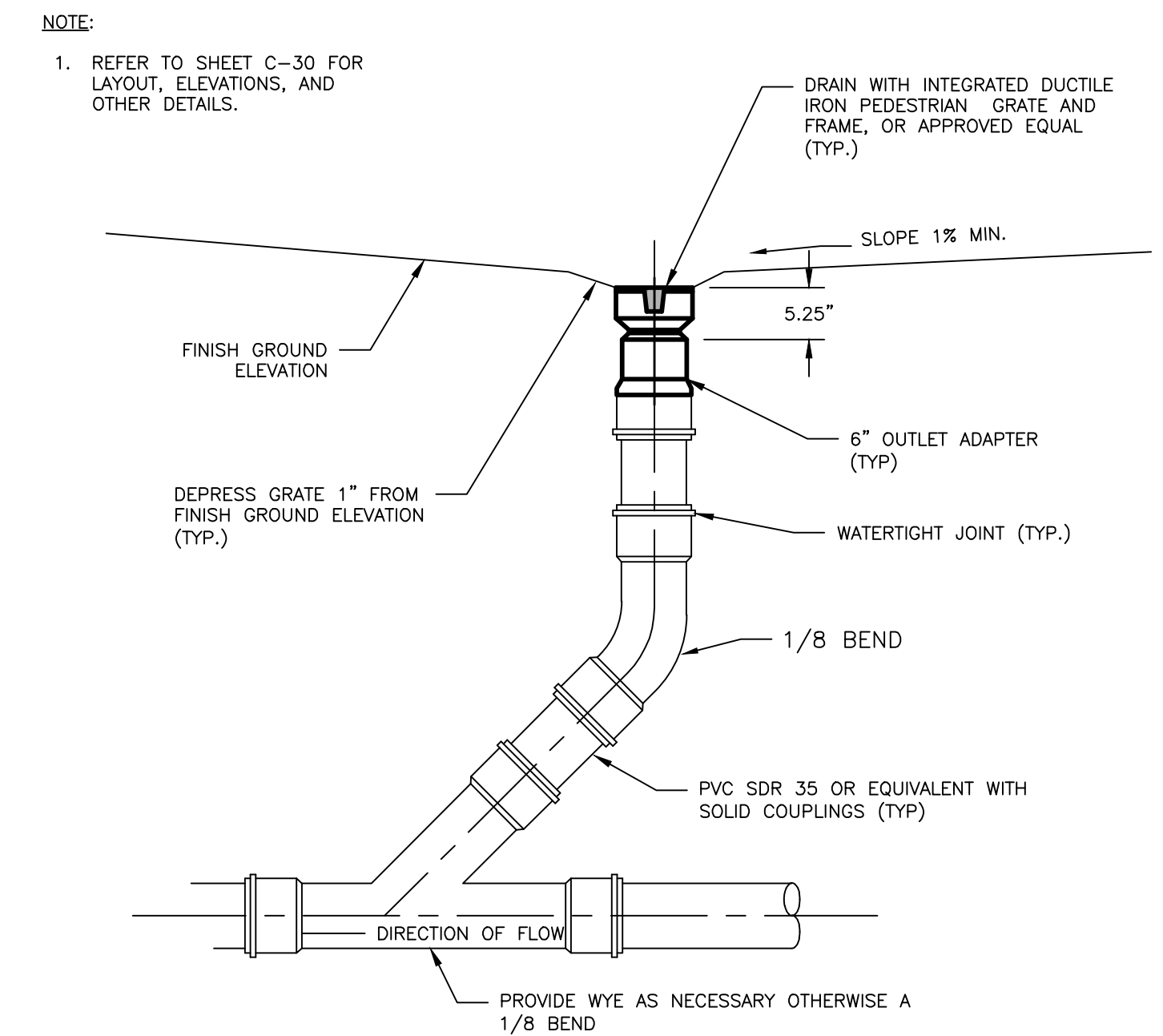
**FOUNDATION DRAIN DETAIL**  
 NOT TO SCALE



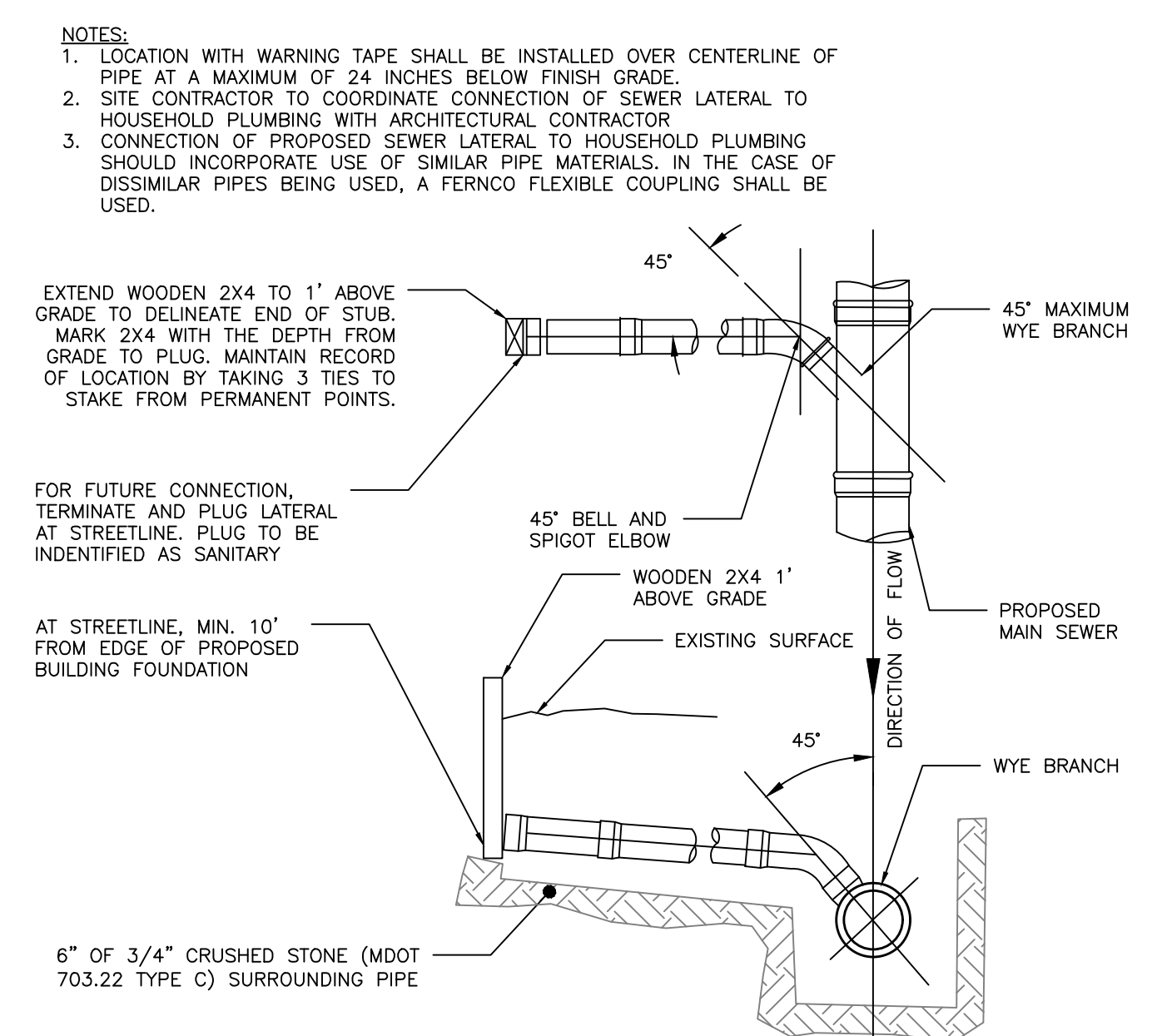
**4'-0" DIAMETER PRECAST OIL AND WATER SEPARATOR**  
 NOT TO SCALE



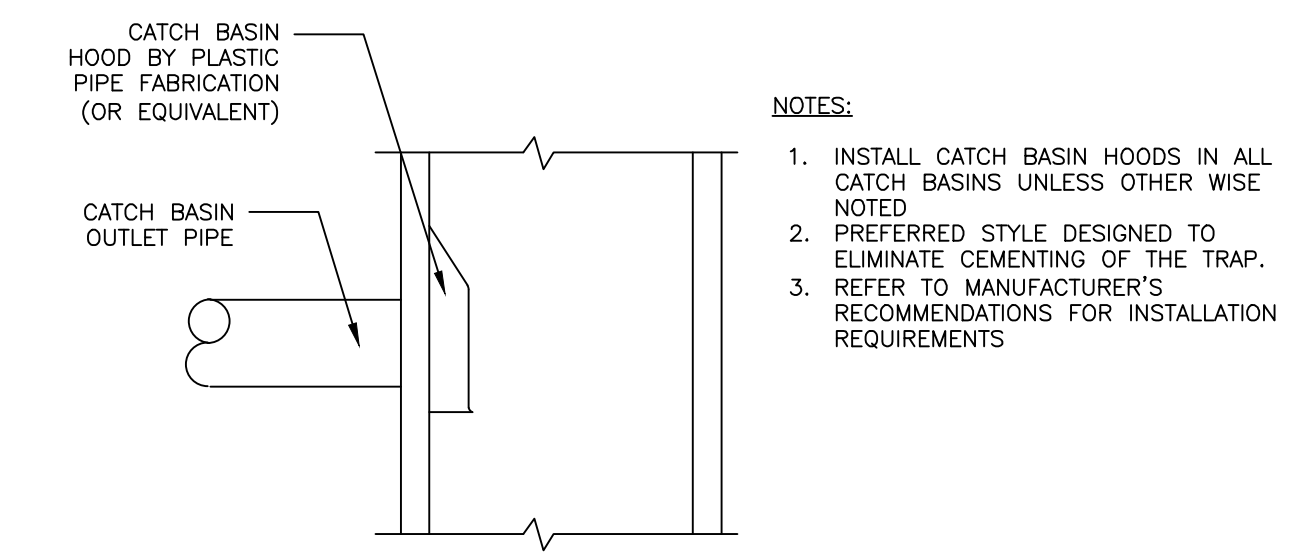
**4'-0" DIAMETER PRECAST DRAINAGE MANHOLE**  
 NOT TO SCALE



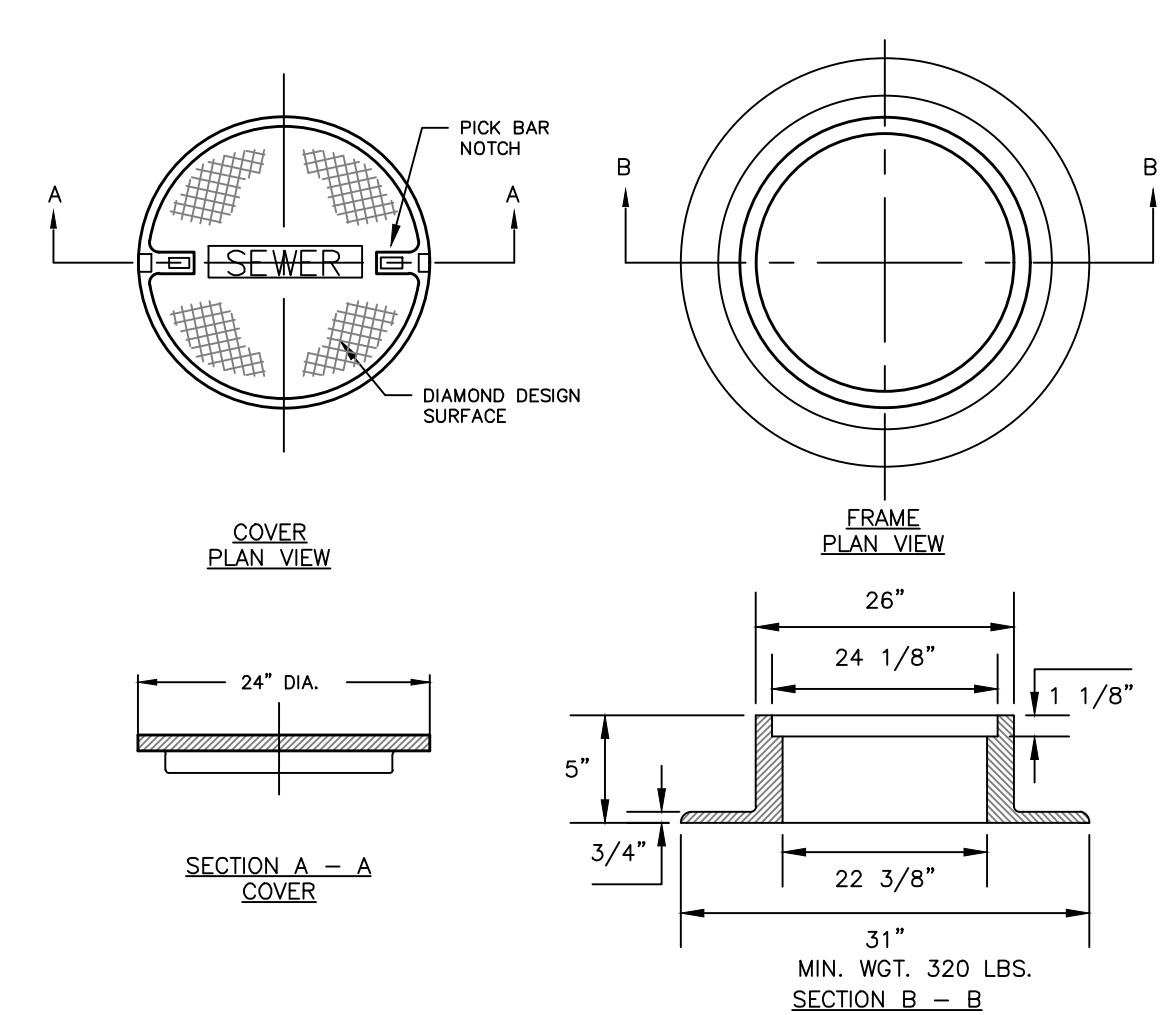
**INLINE DRAIN DETAIL**  
 NOT TO SCALE



**SEWER TEE/WYE CONNECTION DETAIL**  
 NOT TO SCALE

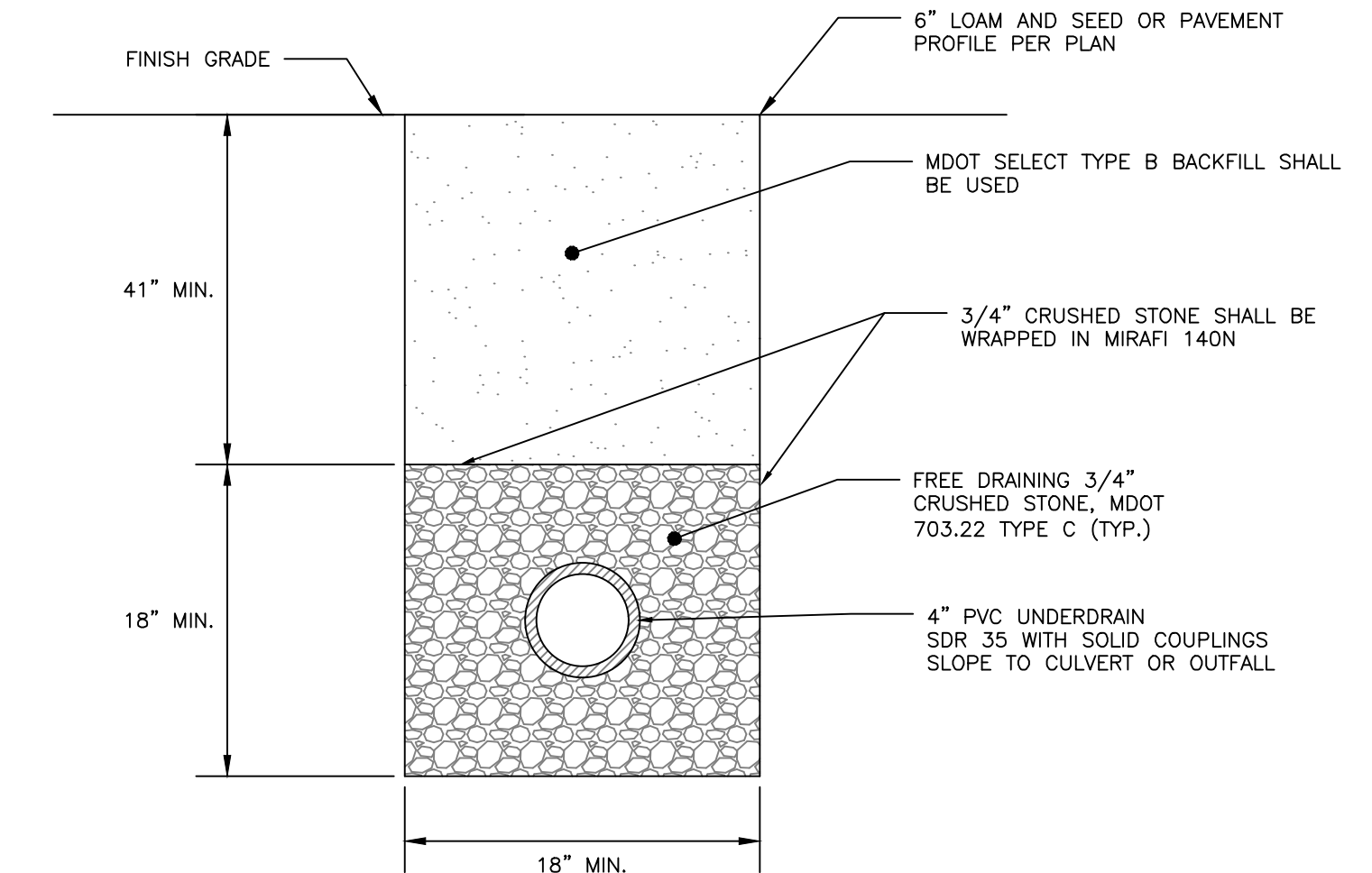


**CATCH BASIN HOOD DETAIL**  
 NOT TO SCALE



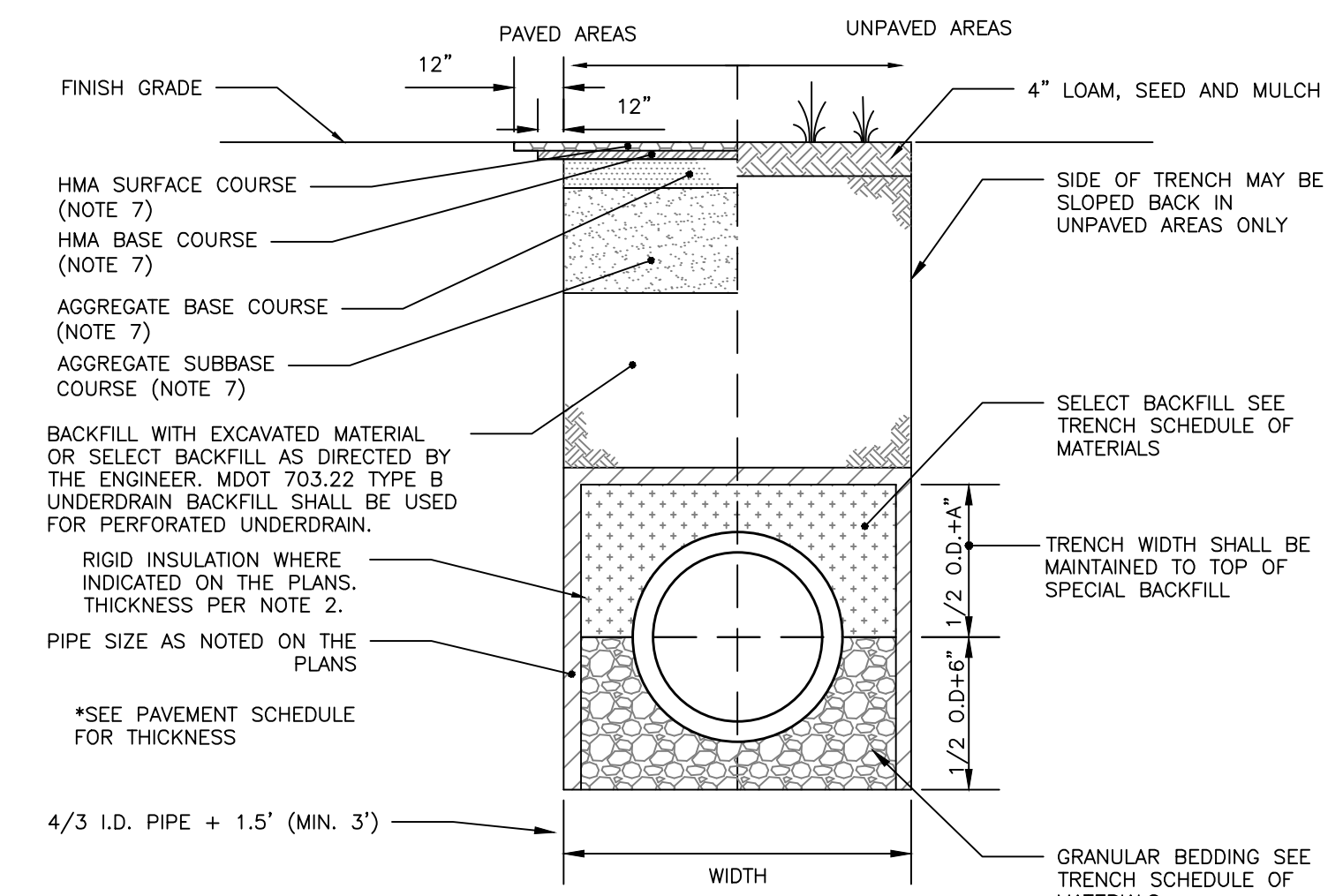
**CAST IRON MANHOLE COVER AND FRAME**  
 NOT TO SCALE

- NOTES:**
- ALL SANITARY AND STORMWATER/RAIN MANHOLE COVERS SHALL BE 24" x 5".
  - ALL SANITARY MANHOLE COVERS AND SHALL HAVE "SEWER" CAST INTO THE COVER.
  - ALL STORMWATER/RAIN MANHOLE COVERS SHALL HAVE "RAIN" CAST INTO THE COVER.
  - APPROVED MANHOLE FRAMES: 4.1 EAST JORDAN = 1690Z 4.2 OR APPROVED EQUAL
  - APPROVED MANHOLE COVERS: 5.1 EAST JORDAN = 2160A 5.2 OR APPROVED EQUAL
  - FRAME AND COVER CONSTRUCTION SHALL BE COMPATIBLE WITH STANDARD PRECAST SEWER MANHOLE DETAIL.



- NOTES:**
- MINIMUM UNDERDRAIN SLOPE 0.0025 (0.25%)
  - PERFORATIONS IN UNDERDRAIN PIPE SHALL BE ORIENTED DOWN.

**UNDERDRAIN DETAIL**  
 NOT TO SCALE



**STORM DRAIN AND SEWER TYPICAL TRENCH SECTION**  
 NOT TO SCALE

SCHEDULE OF MATERIALS		
TYPE OF PIPE	GRANULAR BEDDING	SELECT BACKFILL
CMP DUCTILE IRON RCP	MDOT 703.22 TYPE B UD BACKFILL	MDOT 703.22 TYPE B UD BACKFILL
PVC/HDPE	MDOT 703.22 TYPE C 3/4\"/>	

- NOTES:**
- BRACING AND SHEETING OR OTHER TRENCH PROTECTION TO BE PROVIDED TO MEET APPLICABLE STATE AND O.S.H.A. SAFETY STANDARDS. ALL SUCH TRENCH PROTECTION TO BE THE RESPONSIBILITY OF THE CONTRACTOR.
  - STORM DRAIN COVER BETWEEN 2' AND 3' SHALL INCLUDE 4" OF RIGID INSULATION. COVER BETWEEN 3' AND 4' SHALL INCLUDE 2" RIGID INSULATION. OTHER UTILITIES: ADD 2" OF RIGID INSULATION FOR EACH FOOT ABOVE MINIMUM DEPTH.
  - INSTALL WARNING TAPE DIRECTLY ABOVE UTILITIES AT THE TOP OF SUBGRADE.
  - MINIMUM COVER: 4.1. 2'-0" - STORM DRAIN 4.2. 5'-0" - SEWER
  - NO TREES SHALL BE PLANTED WITHIN 5' OF A SEWER PIPE OR SERVICE
  - THIS DETAIL SHALL BE APPLIED ONLY TO DRAINAGE PIPE TRENCHES OUTSIDE OF THE CITY OF PORTLAND ROW.
  - THICKNESS AS NOTED BY SURFACE DETAILS

FINAL  
 NOT ISSUED FOR  
 CONSTRUCTION