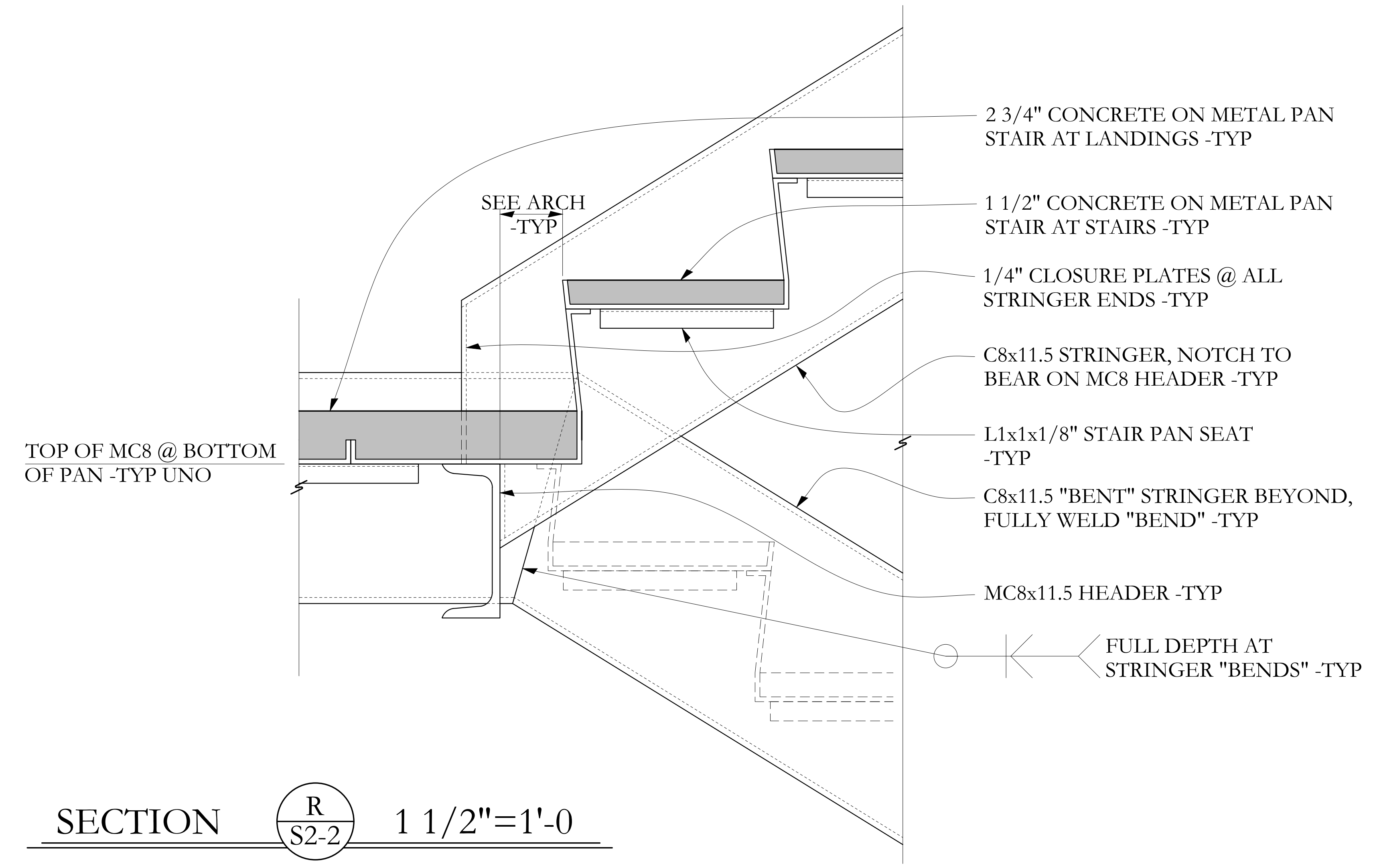
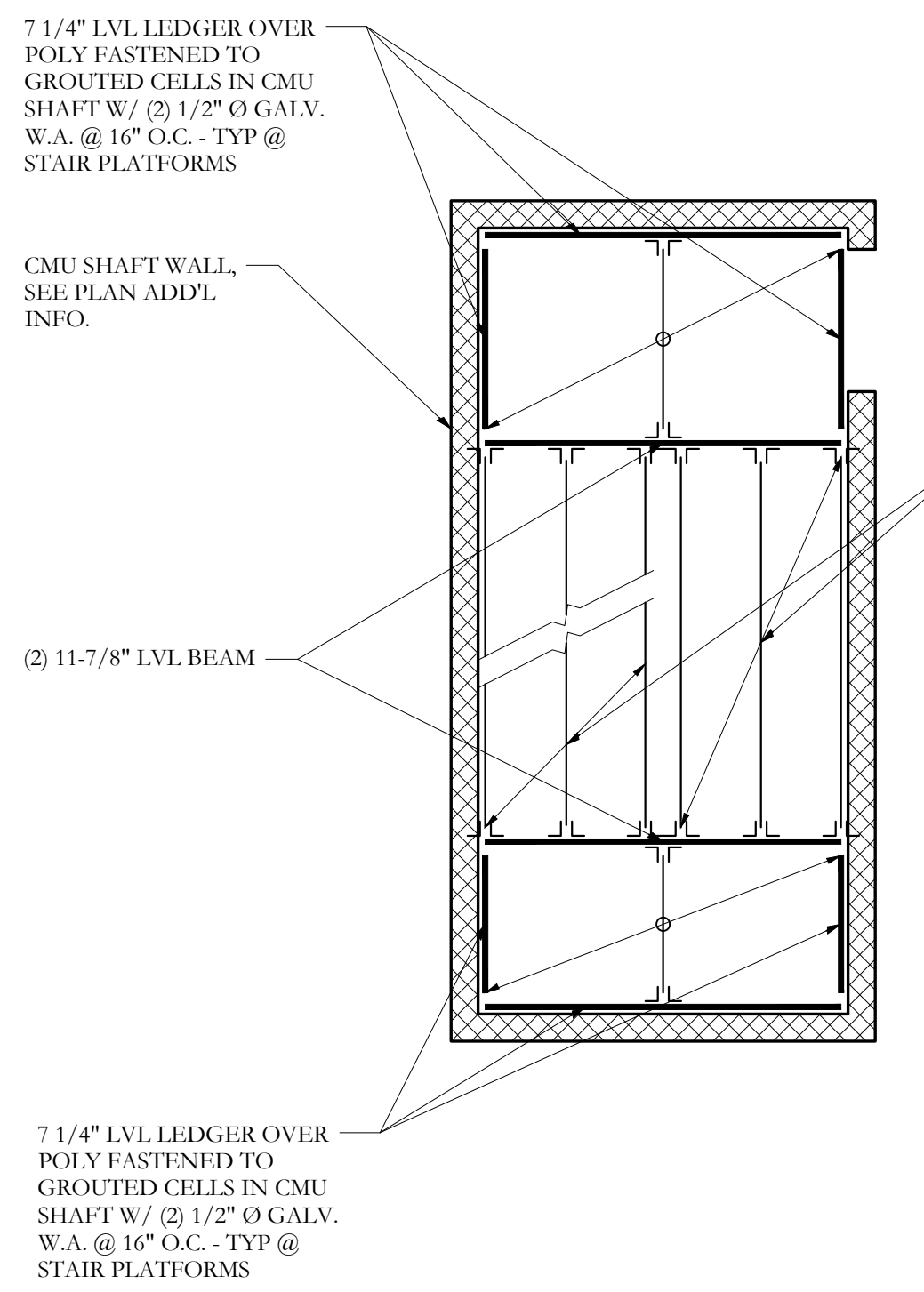


SECTION B S-4.1 1/4"=1'-0

NOTES:  
 1) COORDINATE LANDING ELEVATIONS WITH ARCH DWGS  
 2) COORDINATE STAIR DIMENSIONS WITH ARCH DWGS  
 3) SEE ARCH DWGS FOR RAILINGS AND FINISHES

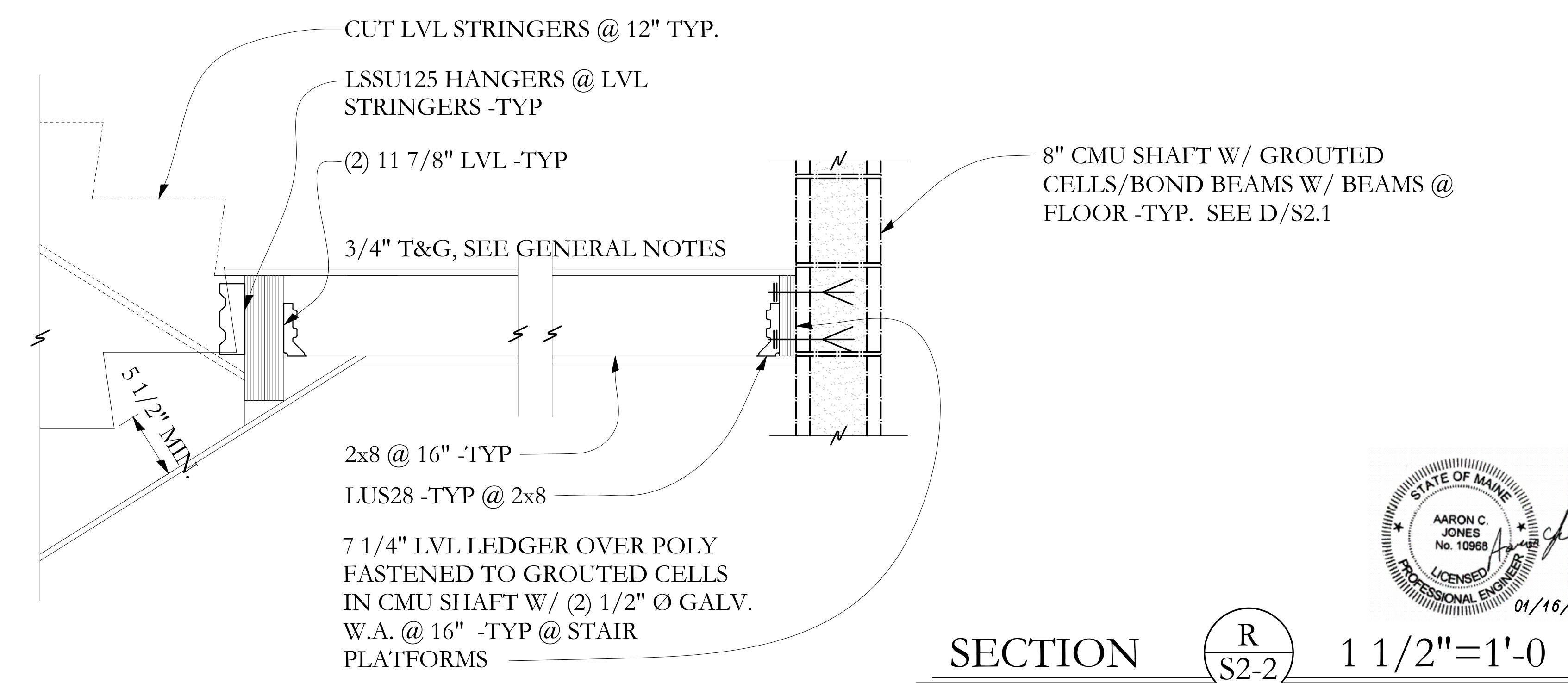


SECTION R S2-2 1 1/2"=1'-0



SECTION A S-4.1 1/4"=1'-0

NOTES:  
 1) COORDINATE LANDING ELEVATIONS WITH ARCH DWGS  
 2) COORDINATE STAIR DIMENSIONS WITH ARCH DWGS  
 3) SEE ARCH DWGS FOR RAILINGS AND FINISHES



SECTION R S2-2 1 1/2"=1'-0

