



© 2017 RYAN SENATORE ARCHITECTURE

RESIDENCES
155 SHERIDAN STREET
PORTLAND, MAINE



RYAN SENATORE
ARCHITECTURE
565 CONGRESS STREET
PORTLAND, MAINE 04101
207-650-6414
senatorearchitecture.com

CONSULTANTS:
Structural Integrity
77 Oak Street
Portland, ME 04101
207-774-4814

REVISIONS:

DATE: JANUARY 16, 2018

PROJECT No. 1604

DRAWN BY: RRT, RJS

CHECKED BY: RJS

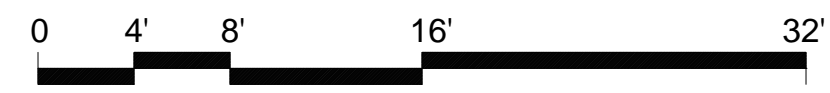
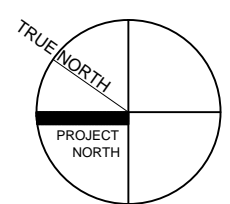
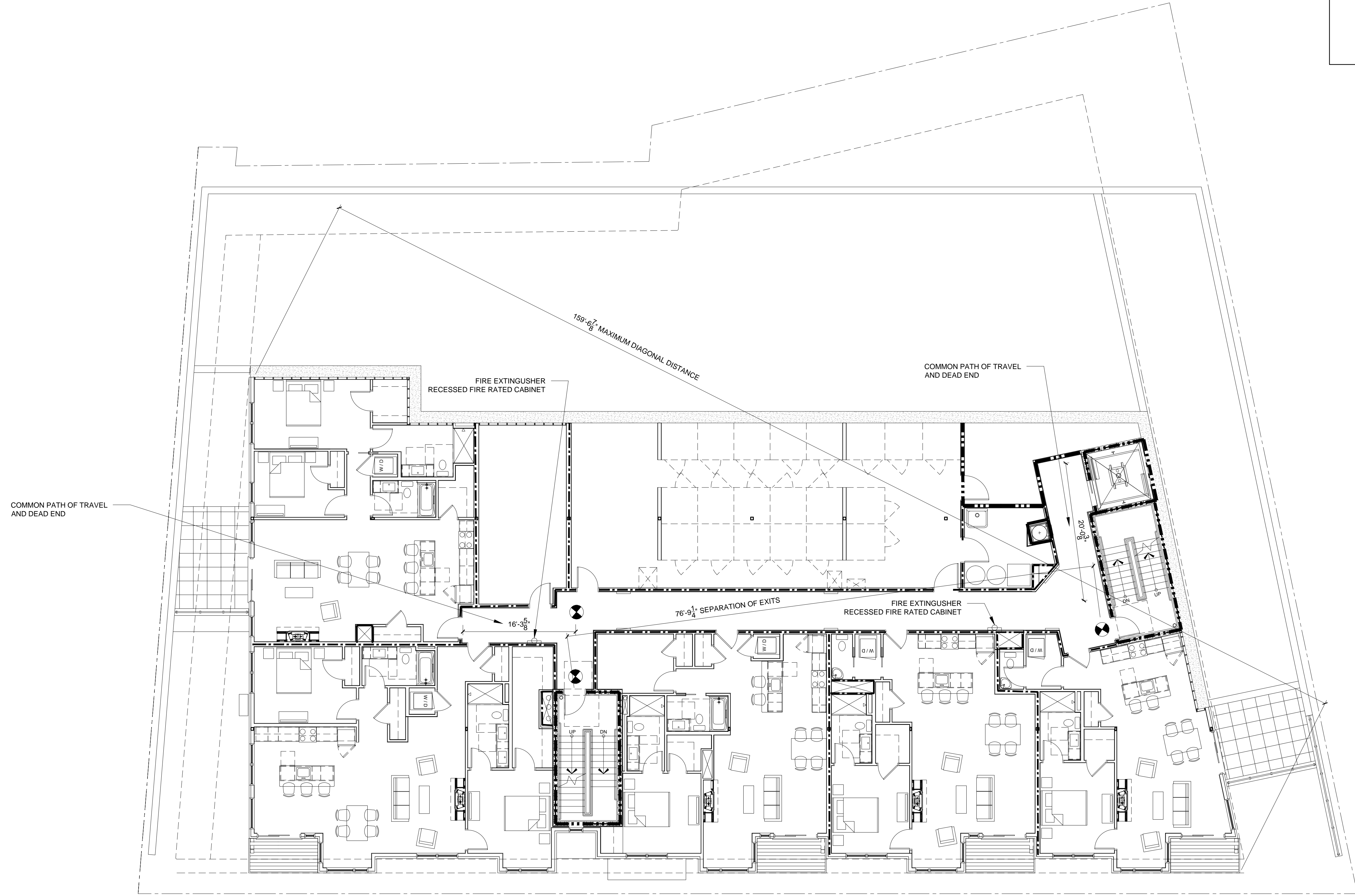
SCALE: AS NOTED

SHEET TITLE:
SECOND FLOOR
LIFE SAFETY
PLAN

G1-2

CODE REVIEW LEGEND

- ▬▬▬▬▬▬▬▬ 2 HOUR SEPARATION
- ▬▬▬▬▬▬▬▬ 1 HOUR SEPARATION
- ⊗ EXIT SIGN
- ☒ FIRE EXTINGUISHER



1 SECOND FLOOR LIFE SAFETY PLAN
1/8" = 1'-0"