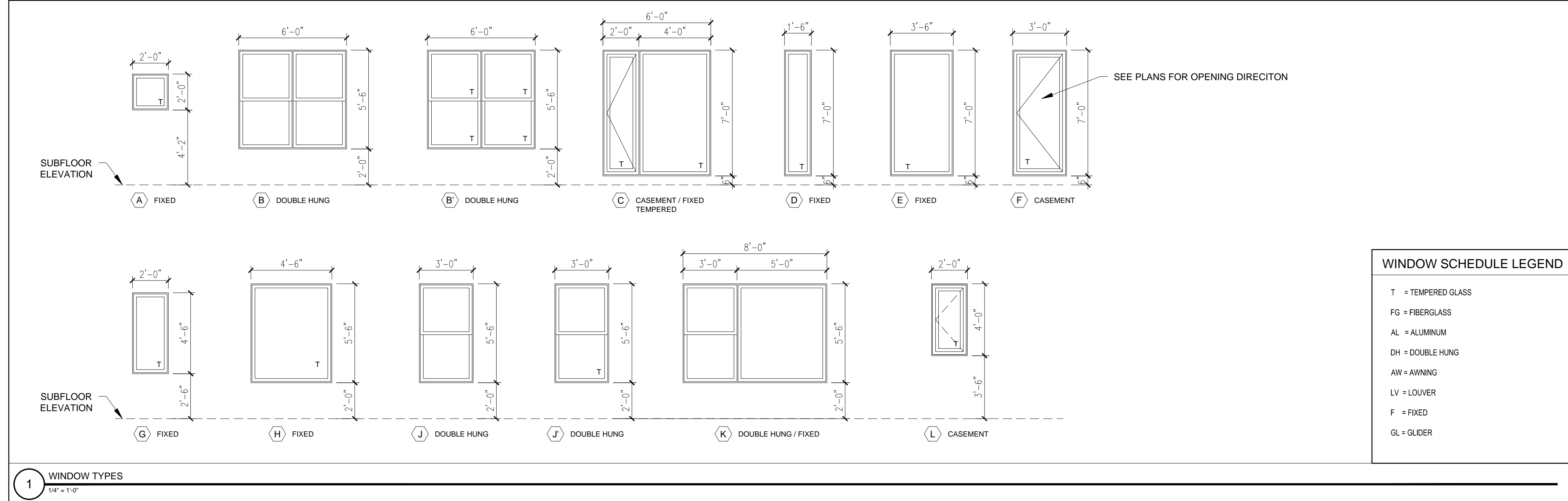


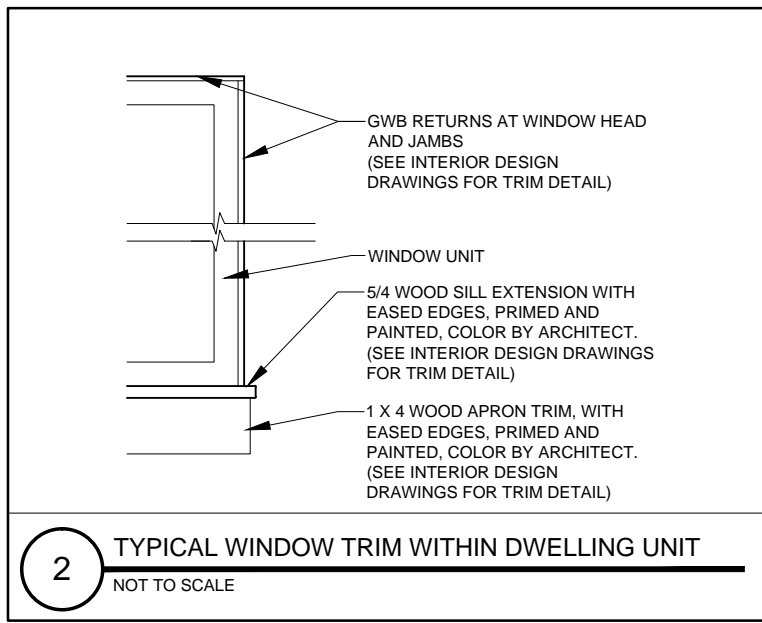
© 2017 RYAN SENATORE ARCHITECTURE

RESIDENCES
155 SHERIDAN STREET
PORTLAND, MAINE

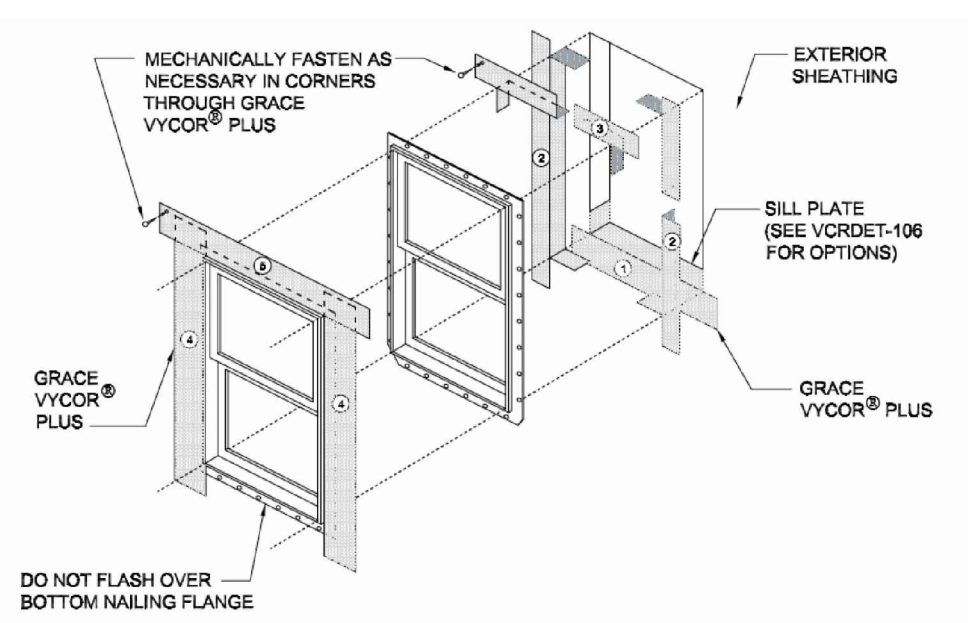


WINDOW SCHEDULE

| KEY | ACTION | ROUGH OPENING (WxH) VIF | DETAILS | | | MATERIAL | FINISH | REMARKS |
|-----|--------|-------------------------|------------------------------|------|------|----------|--------|---|
| | | | RO-HEAD REPORT FROM SUBFLOOR | HEAD | JAMB | | | |
| A | F | 2'-0" X 2'-0" | - | - | - | FGWD | - | NAILING FLANGE, TEMPERED |
| B | DH | 6'-0" X 5'-6" | - | - | - | FGWD | - | NAILING FLANGE, 4" SASH LIMITER |
| B' | DH | 6'-0" X 5'-6" | - | - | - | FGWD | - | NAILING FLANGE, 4" SASH LIMITER, TEMPERED |
| C | CF | 6'-0" X 7'-0" | - | - | - | FGWD | - | NAILING FLANGE, 4" SASH LIMITER, TEMPERED |
| D | F | 4'-6" X 7'-0" | - | - | - | FGWD | - | NAILING FLANGE, TEMPERED |
| E | F | 3'-6" X 7'-0" | - | - | - | FGWD | - | NAILING FLANGE, TEMPERED |
| F | C | 3'-0" X 7'-0" | - | - | - | FGWD | - | NAILING FLANGE, 4" SASH LIMITER, TEMPERED |
| G | F | 2'-0" X 4'-6" | - | - | - | FGWD | - | NAILING FLANGE, TEMPERED |
| H | F | 4'-6" X 5'-6" | - | - | - | FGWD | - | NAILING FLANGE, TEMPERED |
| J | DH | 3'-0" X 5'-6" | - | - | - | FGWD | - | NAILING FLANGE, 4" SASH LIMITER |
| J' | DH | 3'-0" X 5'-6" | - | - | - | FGWD | - | NAILING FLANGE, 4" SASH LIMITER, TEMPERED |
| K | DHF | 8'-0" X 5'-6" | - | - | - | FGWD | - | NAILING FLANGE, 4" SASH LIMITER |
| L | C | 2'-0" X 4'-0" | - | - | - | FGWD | - | NAILING FLANGE, 4" SASH LIMITER, TEMPERED |



- WINDOW NOTES:**
- COORDINATE AND ADJUST ROUGH OPENING DIMENSIONS TO ACCOMMODATE SILL PAN FLASHING SYSTEM
 - ALL WINDOW UNITS AND MULTI-WINDOW UNIT COMBINATIONS TO MEET OR EXCEED DP-50 RATINGS FOR BOTH STRUCTURAL AND WATER
 - PROVIDE MULL REINFORCING AT ALL MULTI-UNIT WINDOWS AS REQUIRED TO ACHIEVE DP-50 RATING, WITH INSTALLATION BRACKETS
 - FULL SCREENS ALL OPENINGS
 - CONTRACTOR TO VERIFY THAT ALL EGRESS OPENINGS MEET EGRESS REQUIREMENTS
 - ALL GLAZING LOCATED WITHIN 18" OF FINISHED FLOOR TO BE TEMPERED GLASS
 - ALL EXTERIOR GLAZING TO BE INSULATED
 - FRAME ALL OPENINGS WITH ELEVATIONS
 - SEAL WINDOW TO ROUGH OPENING WITH LOW EXPANDING FOAMINSULATION - SEE DETAILS



- Notes:**
- For the most current details, installation video and product information, see our web site at www.graceconstruction.com
 - RIPCORD® (Split Release on Demand) can be removed from Grace Vykor® Plus for ease of installation
 - Install Grace Vykor Plus in order shown by numbers
 - If applicable, leave release paper on lower half of sill flashing until future tie-in
 - Install Grace Vykor Plus and weather-resistant barrier to form water-shedding laps
 - Detail also relevant for Grace Vykor V40



RYAN SENATORE ARCHITECTURE
565 CONGRESS STREET
PORTLAND, MAINE 04101
207-650-6414
senatorearchitecture.com

CONSULTANTS:
STRUCTURAL: Structural Integrity
77 Oak Street
Portland, ME 04101
207-774-4614

REVISIONS:

DATE: JANUARY 16, 2018

PROJECT No. 1604

DRAWN BY: RRT, RJS

CHECKED BY: RJS

SCALE: AS NOTED

SHEET TITLE:
WINDOW SCHEDULE

A7-2