



© 2017 RYAN SENATORE ARCHITECTURE

RESIDENCES  
155 SHERIDAN STREET  
PORTLAND, MAINE



RYAN SENATORE  
ARCHITECTURE  
565 CONGRESS STREET  
PORTLAND, MAINE 04101  
207-650-6414  
senatorearchitecture.com

CONSULTANTS:  
STRUCTURAL:  
Structural Integrity  
77 Oak Street  
Portland, ME 04101  
207-774-4814

REVISIONS:

DATE: JANUARY 16, 2018

PROJECT No. 1604

DRAWN BY: RRT, RJS

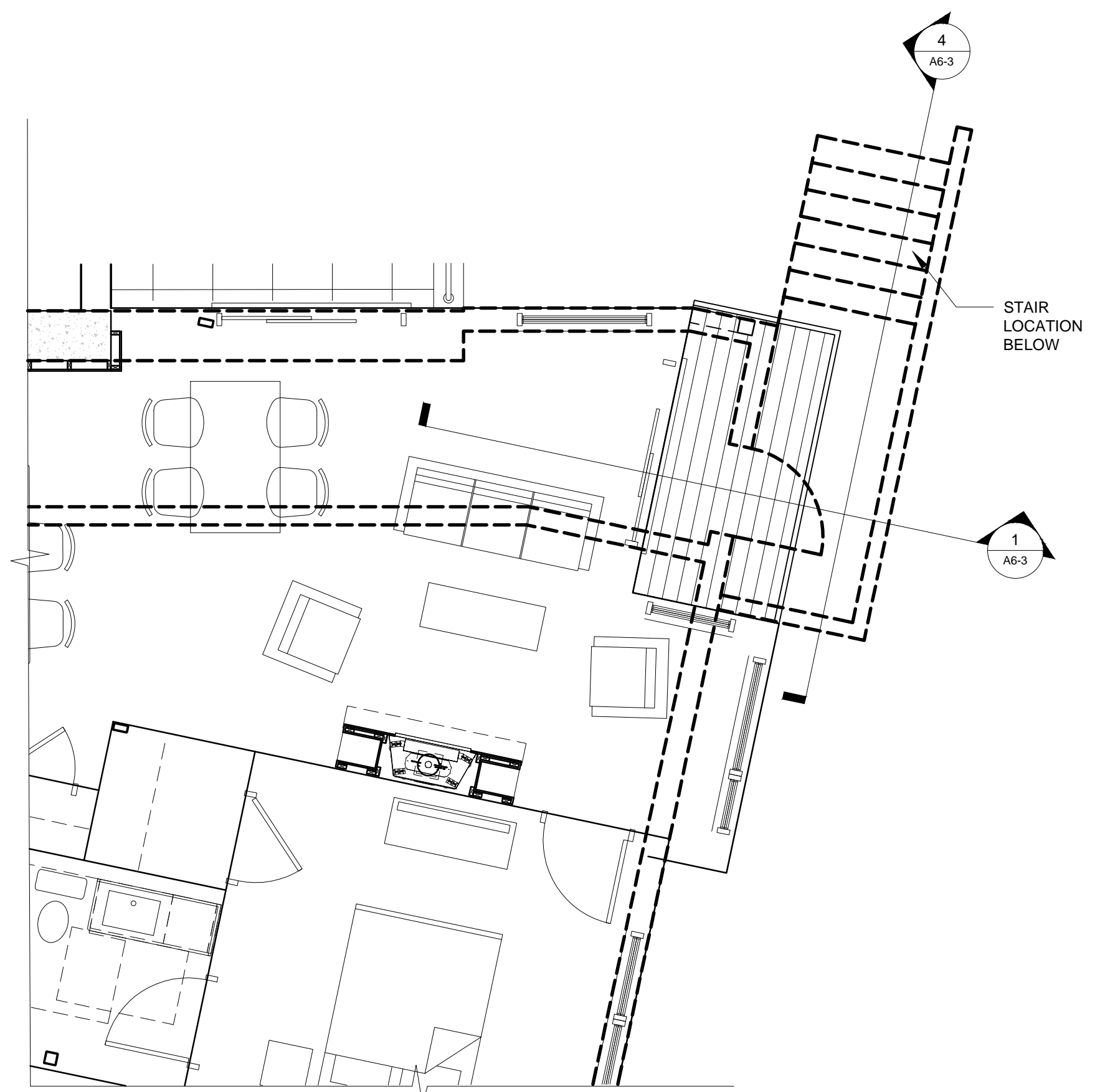
CHECKED BY: RJS

SCALE: AS NOTED

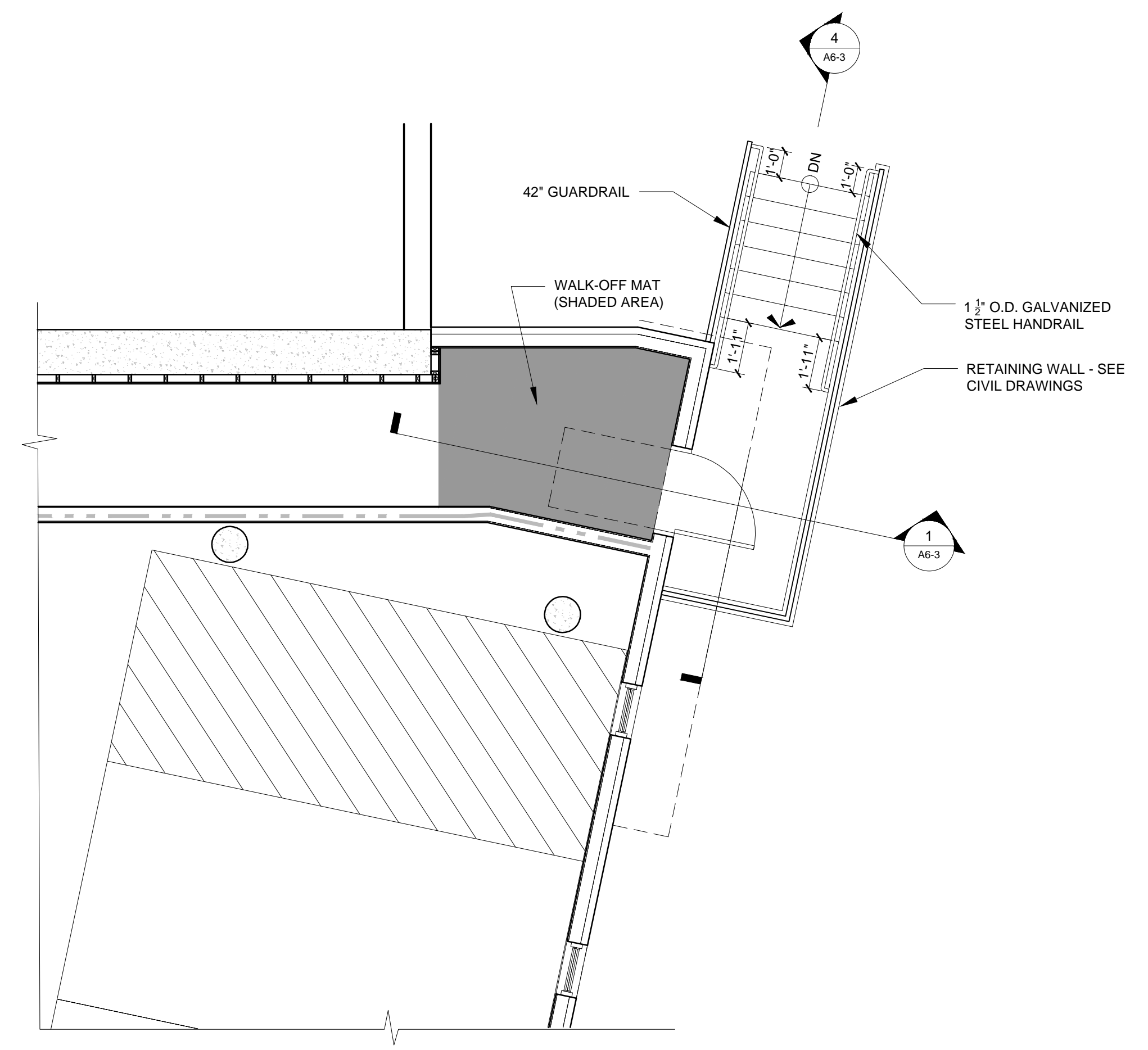
SHEET TITLE:

PLAN AND  
SECTION AT  
SIDE ENTRY 105

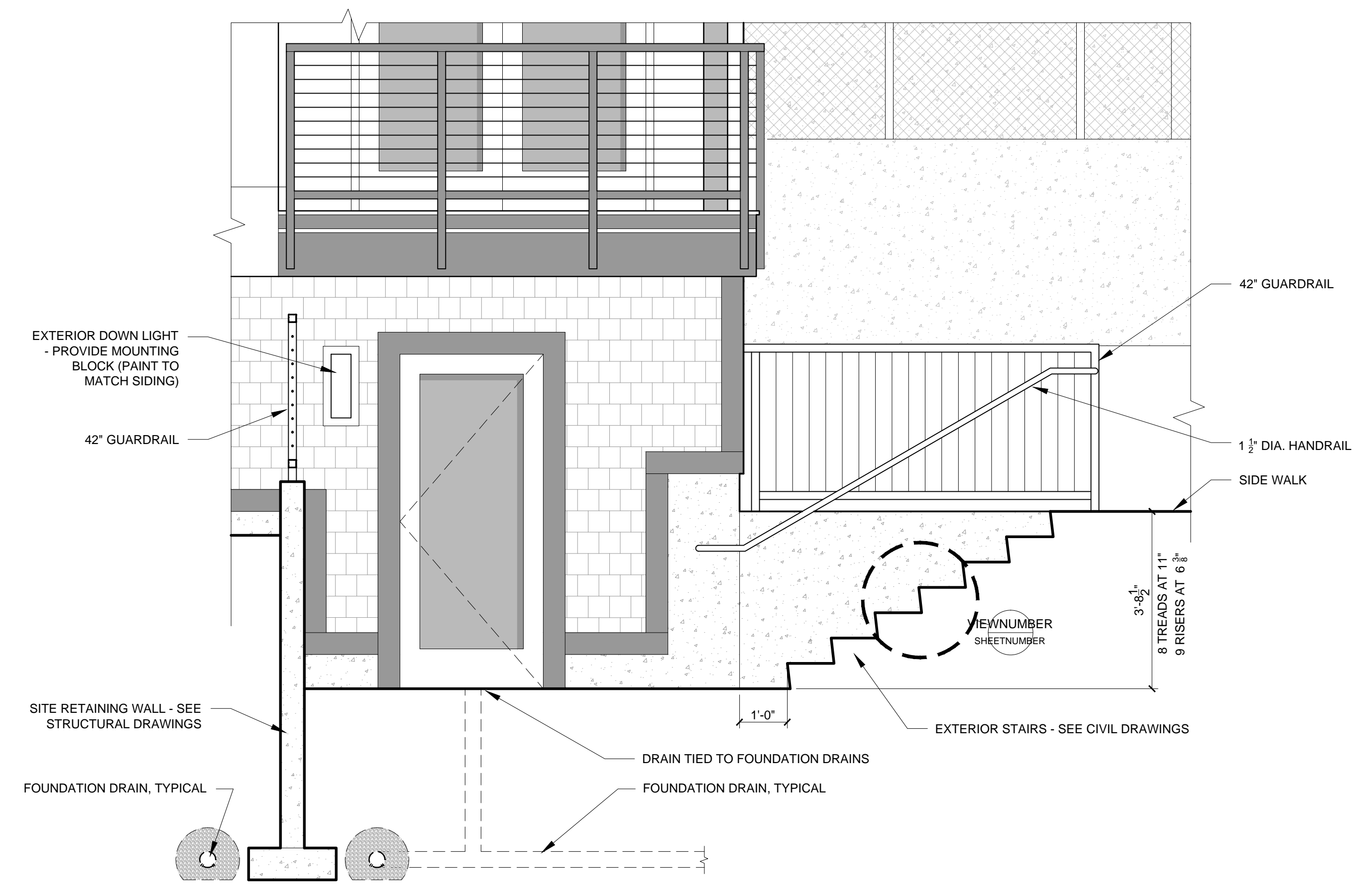
A6-3



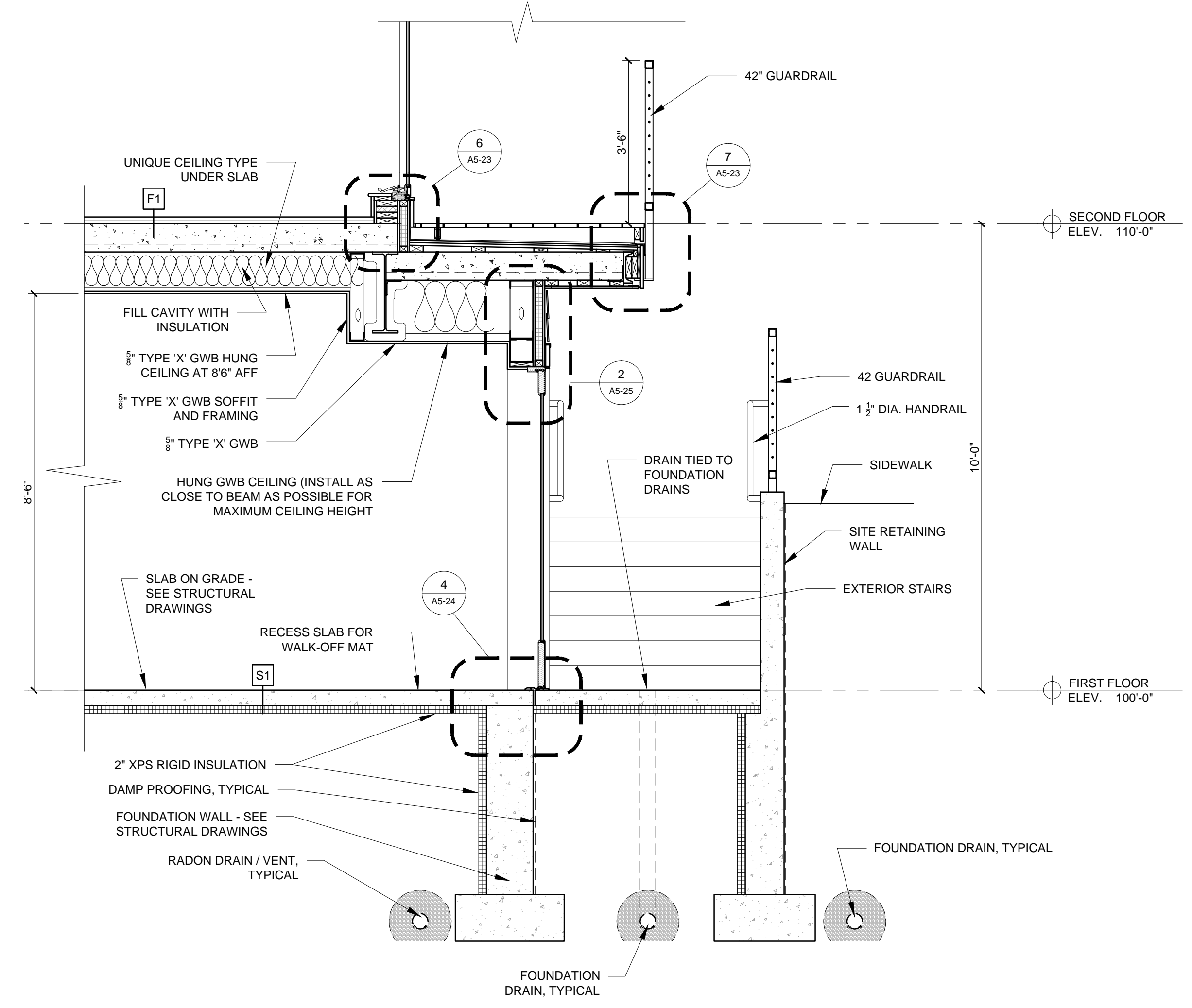
3 SECOND FLOOR PLAN ABOVE SIDE ENTRY  
1/4" = 1'-0"



2 FIRST FLOOR PLAN AT SIDE ENTRY  
1/4" = 1'-0"



4 SECTION AT SIDE ENTRY  
1/2" = 1'-0"



1 SECTION AT SIDE ENTRY  
1/2" = 1'-0"