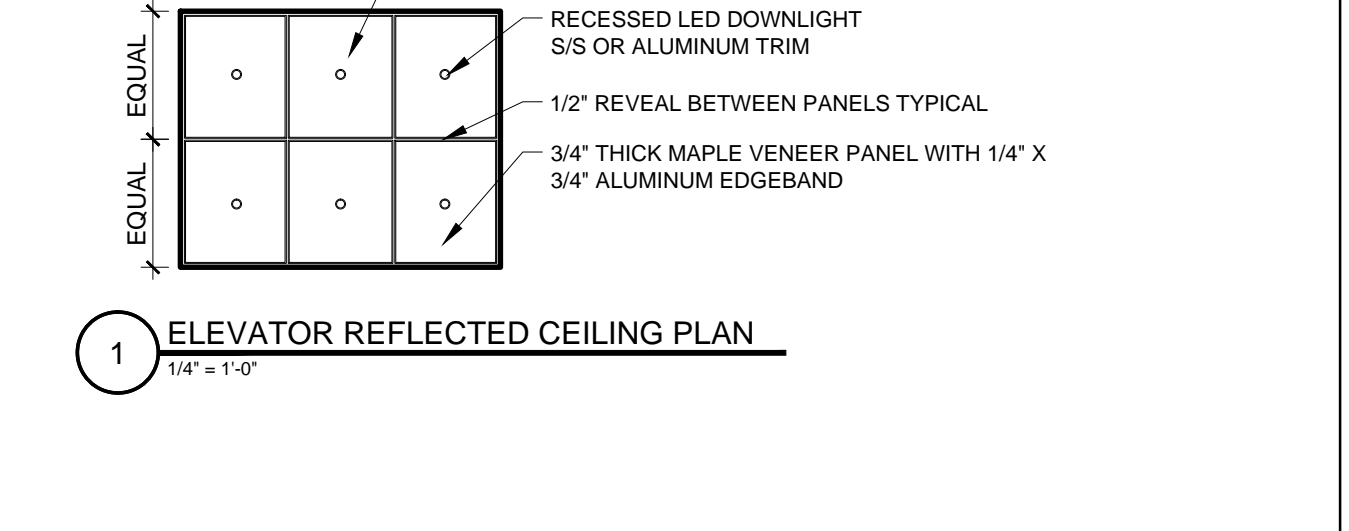
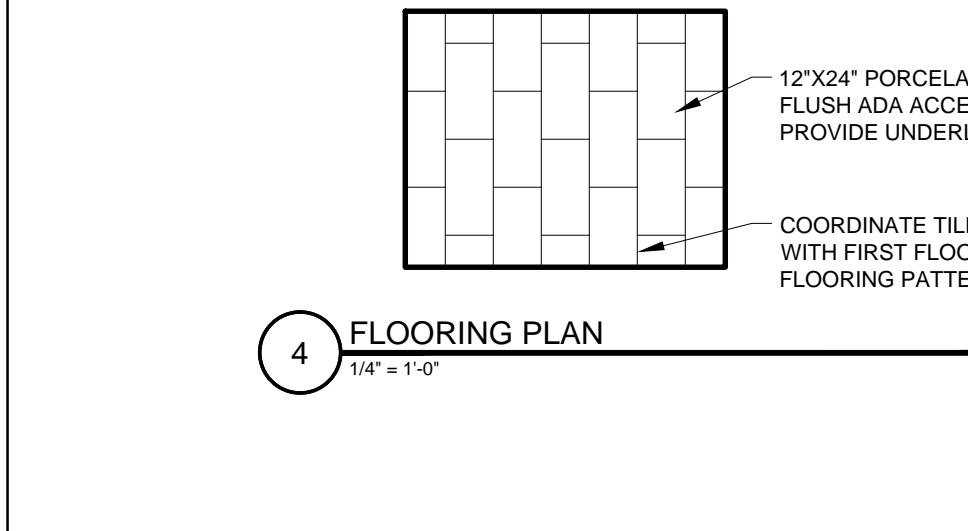
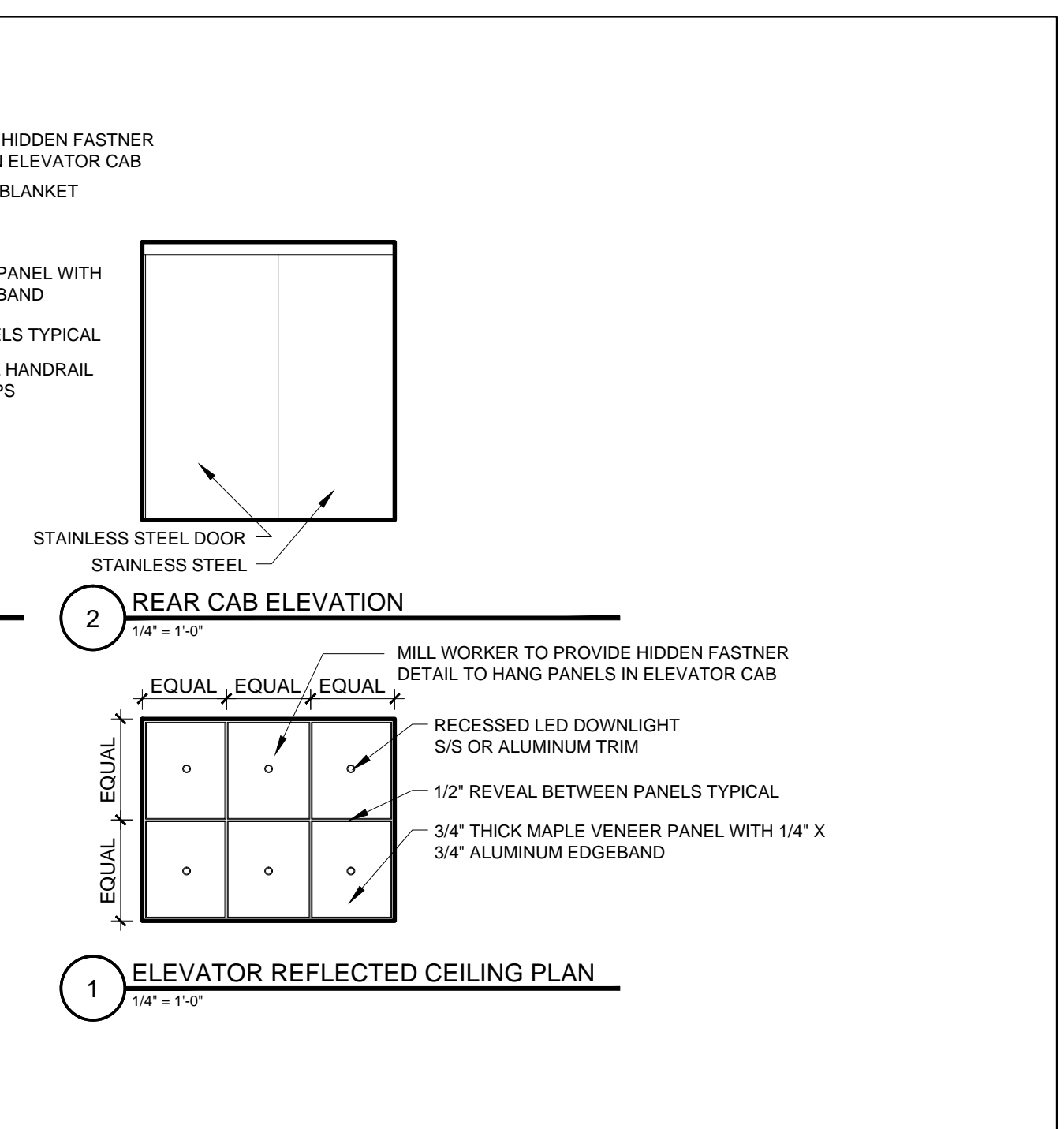
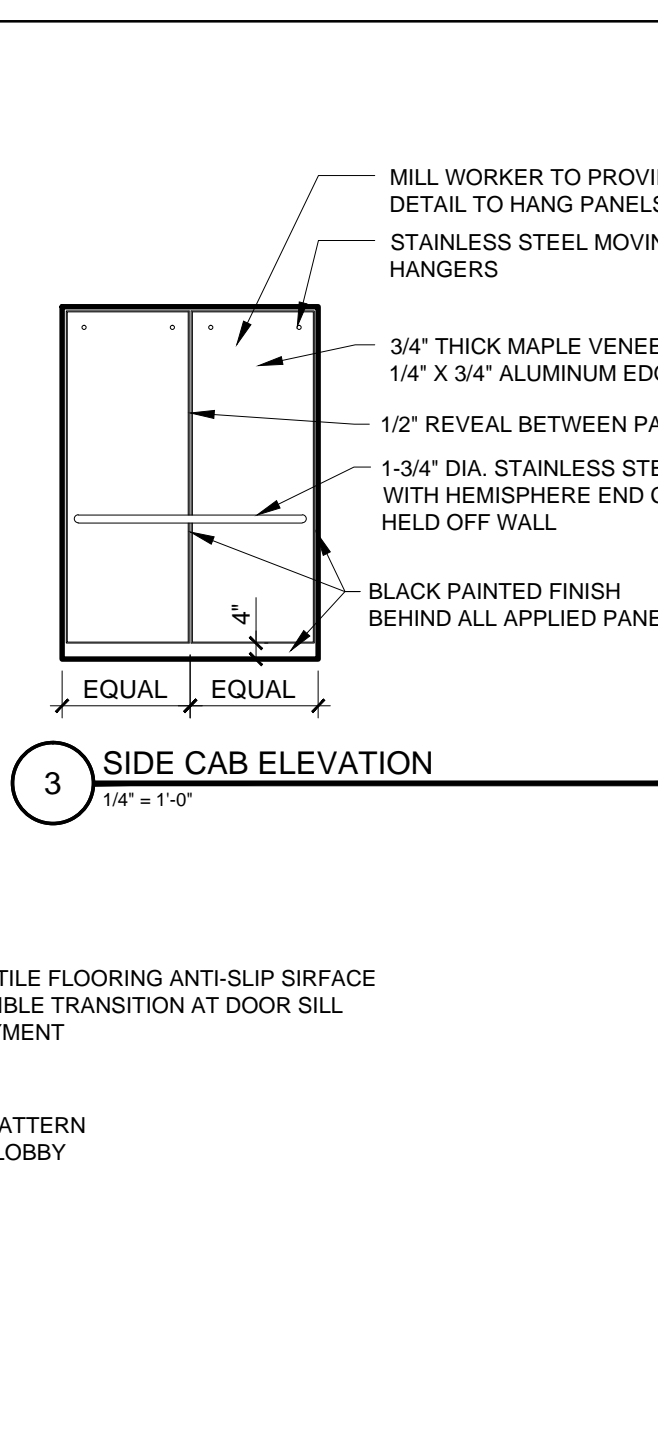
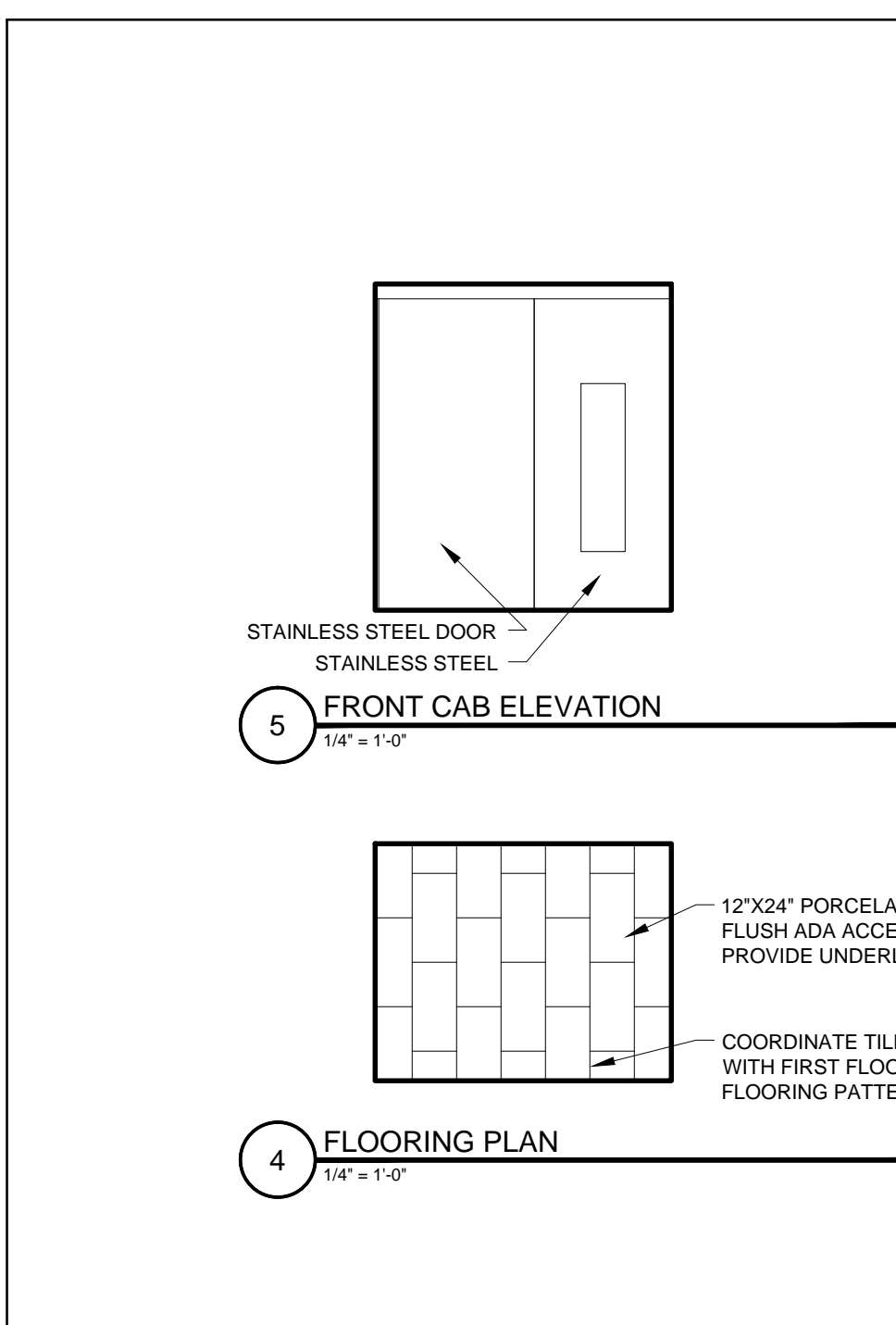
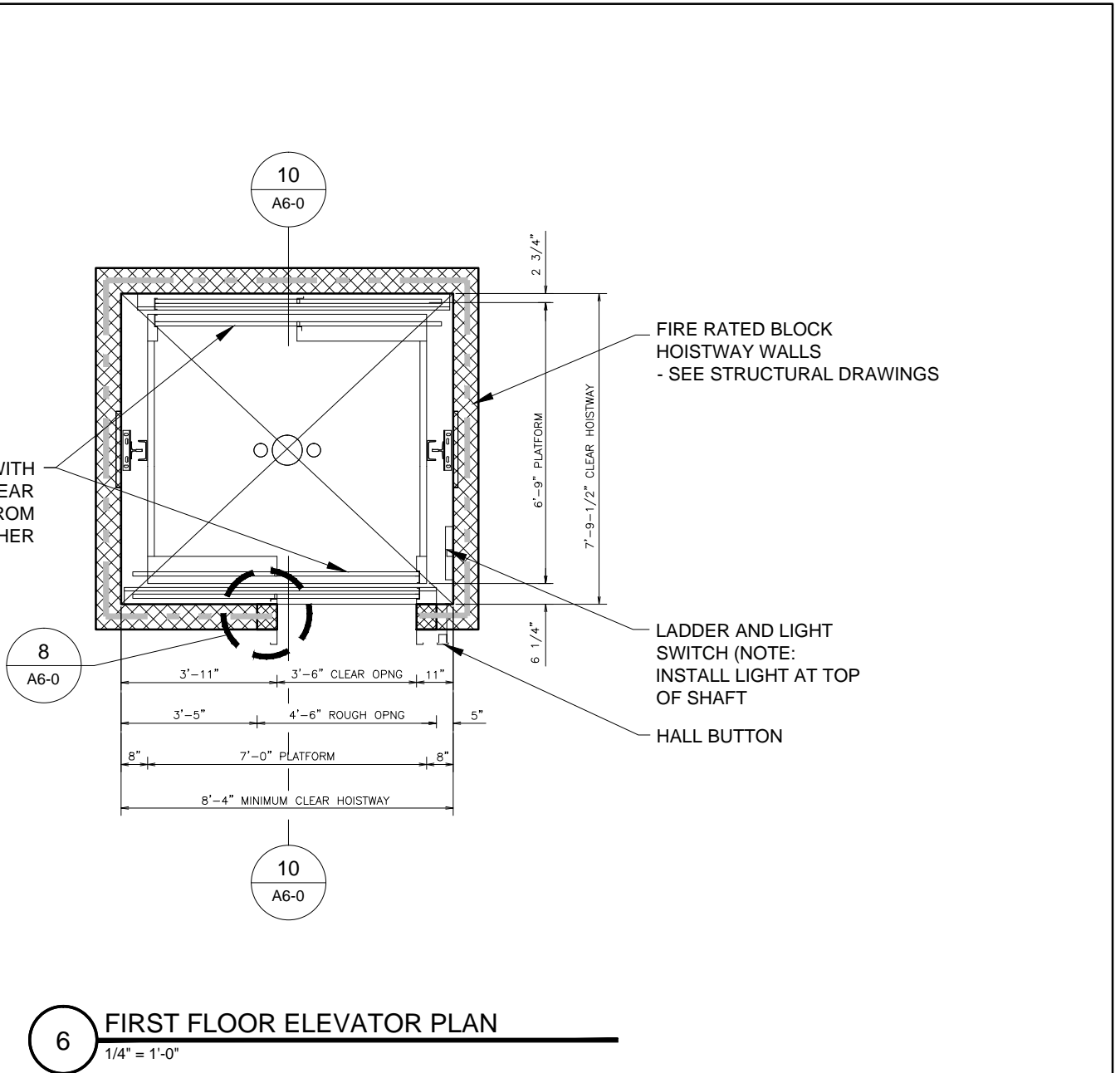
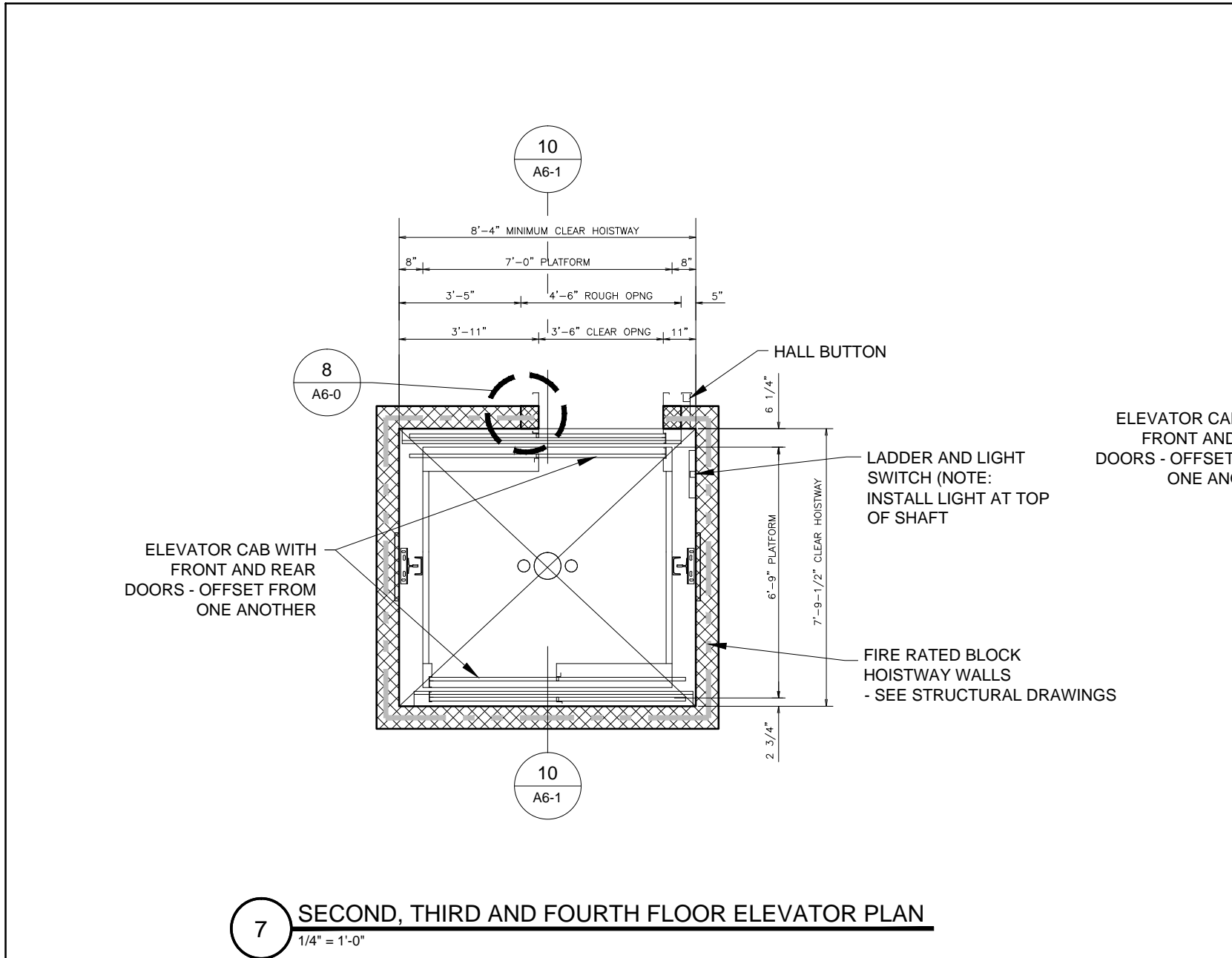
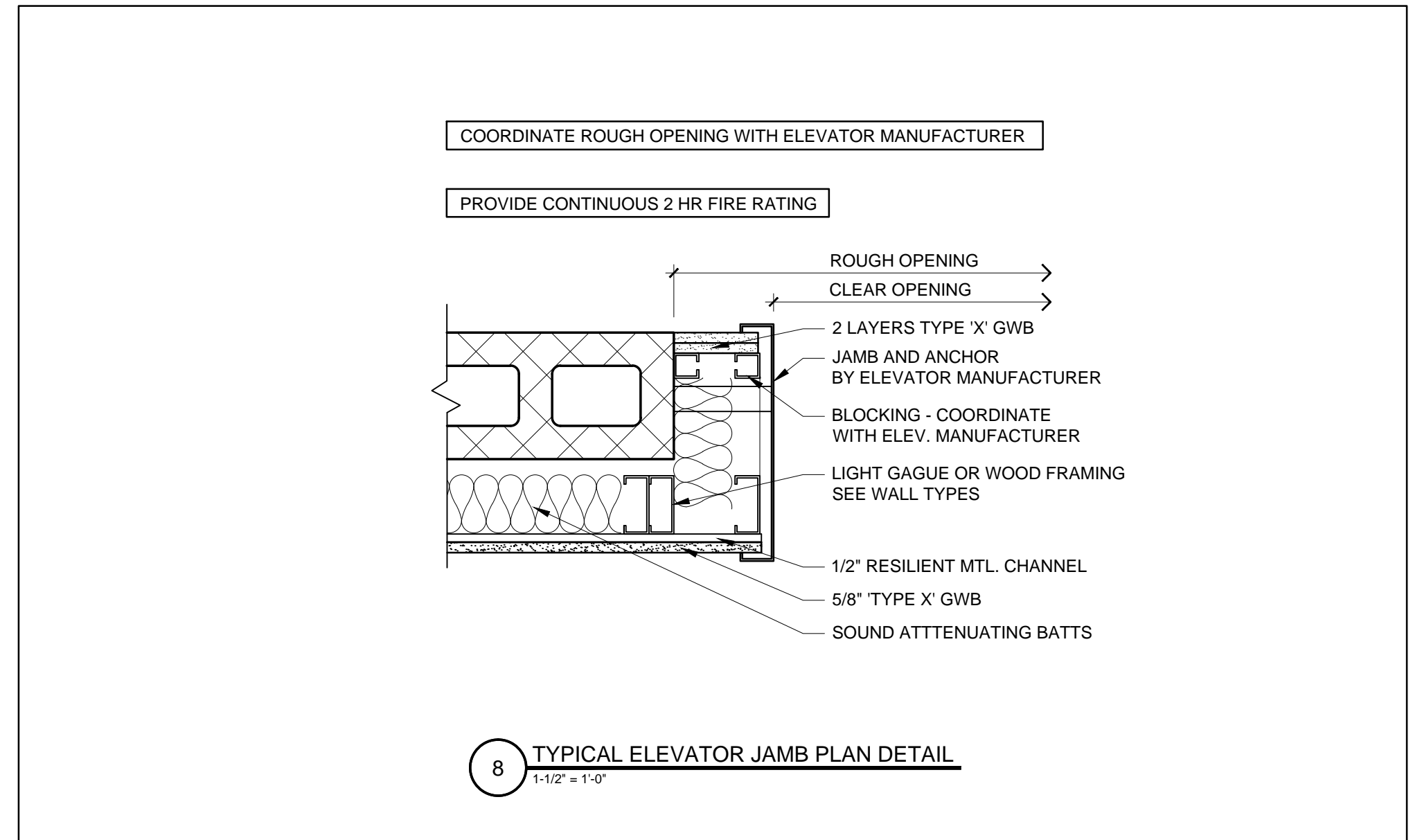
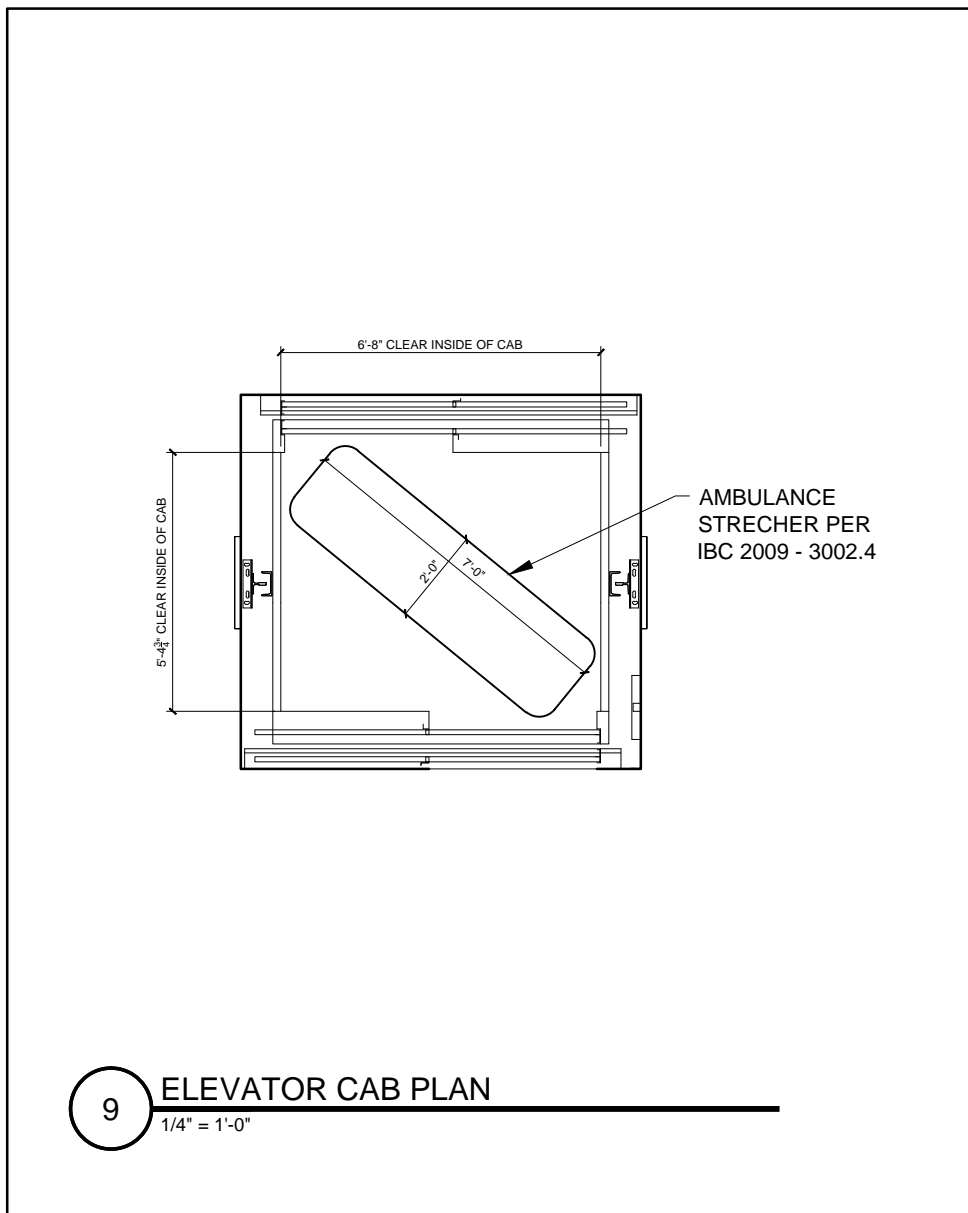


- ELEVATOR NOTES**
- LAYOUT BASED ON 3500LB HOLED HYDRAULIC ELEVATOR WITH FRONT AND REAR DOORS
  - COORDINATE BLOCKWORK WITH ELEVATOR MANUFACTURERS HOISTWAY REQUIREMENTS
  - COORDINATE ROUGH OPENINGS WITH ELEVATOR MANUFACTURERS HOISTWAY REQUIREMENTS
  - ELEVATOR MUST MEET ADA ACCESSIBILITY REQUIREMENTS
  - ELEVATOR DOORS TO HAVE KEY FOB ACCESS CONTROL FOR RESIDENTIAL USES



© 2017 RYAN SENATORE ARCHITECTURE

**RESIDENCES**  
155 SHERIDAN STREET  
PORTLAND, MAINE



**RYAN SENATORE ARCHITECTURE**  
565 CONGRESS STREET  
PORTLAND, MAINE 04101  
207-650-6414  
senatorearchitecture.com

**CONSULTANTS:**  
**STRUCTURAL:**  
Structural Integrity  
77 Oak Street  
Portland, ME 04101  
207-774-4614

**REVISIONS:**

DATE: JANUARY 16, 2018

PROJECT No. 1604

DRAWN BY: RRT, RJS

CHECKED BY: RJS

SCALE: AS NOTED

SHEET TITLE:  
**ELEVATOR DETAILS**

**A6-2**