



© 2017 RYAN SENATORE ARCHITECTURE

RESIDENCES  
155 SHERIDAN STREET  
PORTLAND, MAINE



RYAN SENATORE  
ARCHITECTURE  
565 CONGRESS STREET  
PORTLAND, MAINE 04101  
207-650-6414  
senatorearchitecture.com

CONSULTANTS:  
STRUCTURAL:  
Structural Integrity  
77 Oak Street  
Portland, ME 04101  
207-774-4814

REVISIONS:

DATE: JANUARY 16, 2018

PROJECT No. 1604

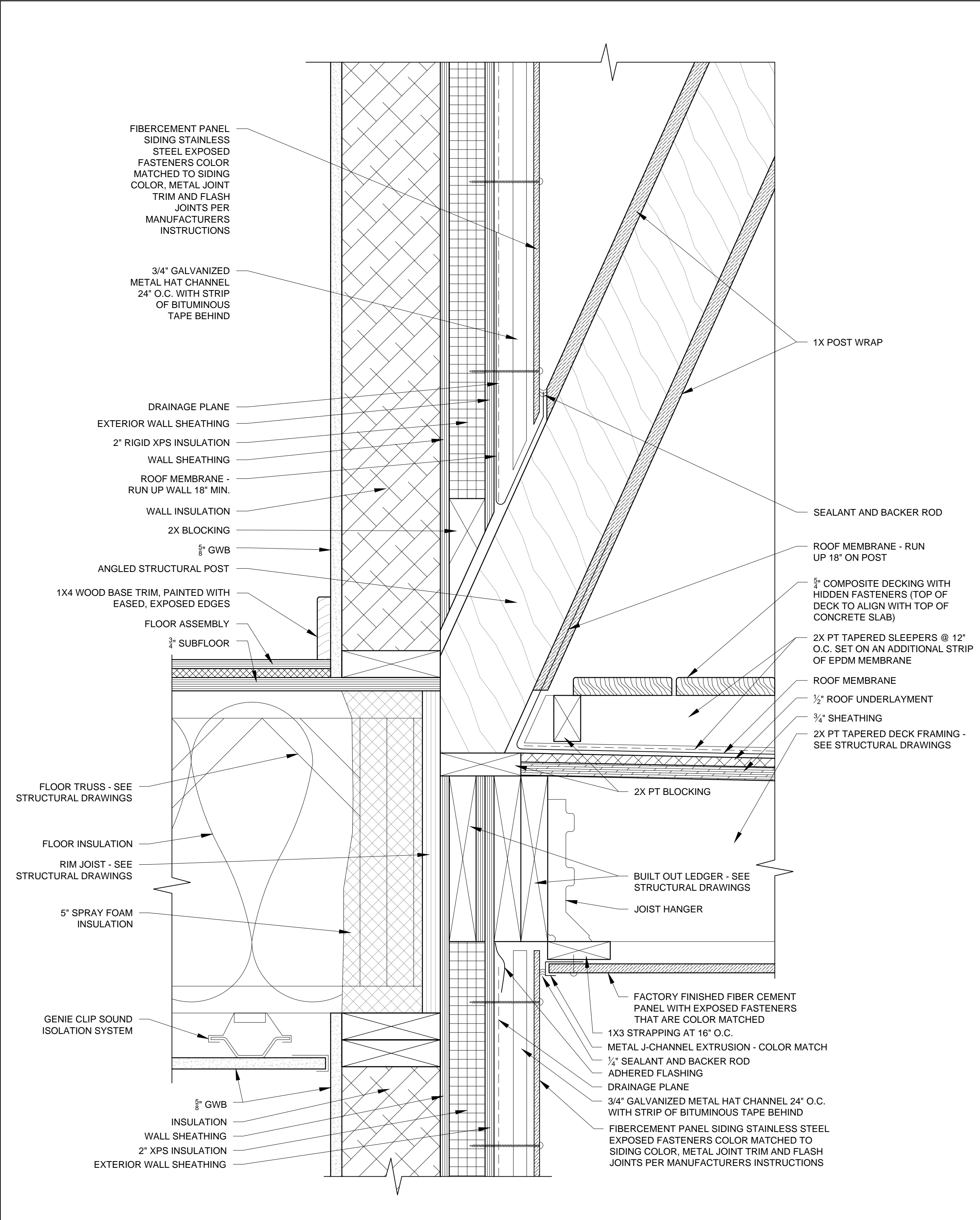
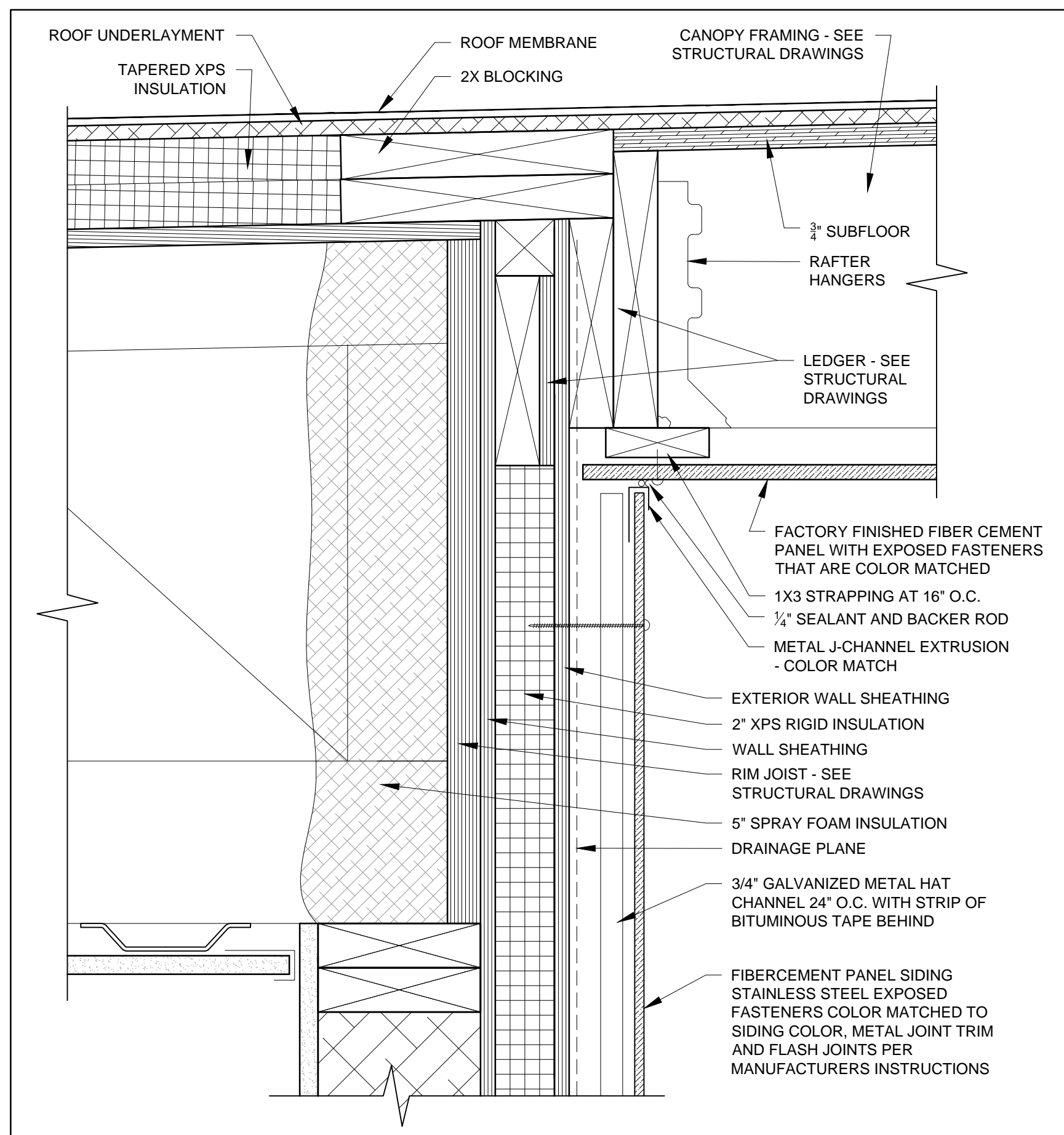
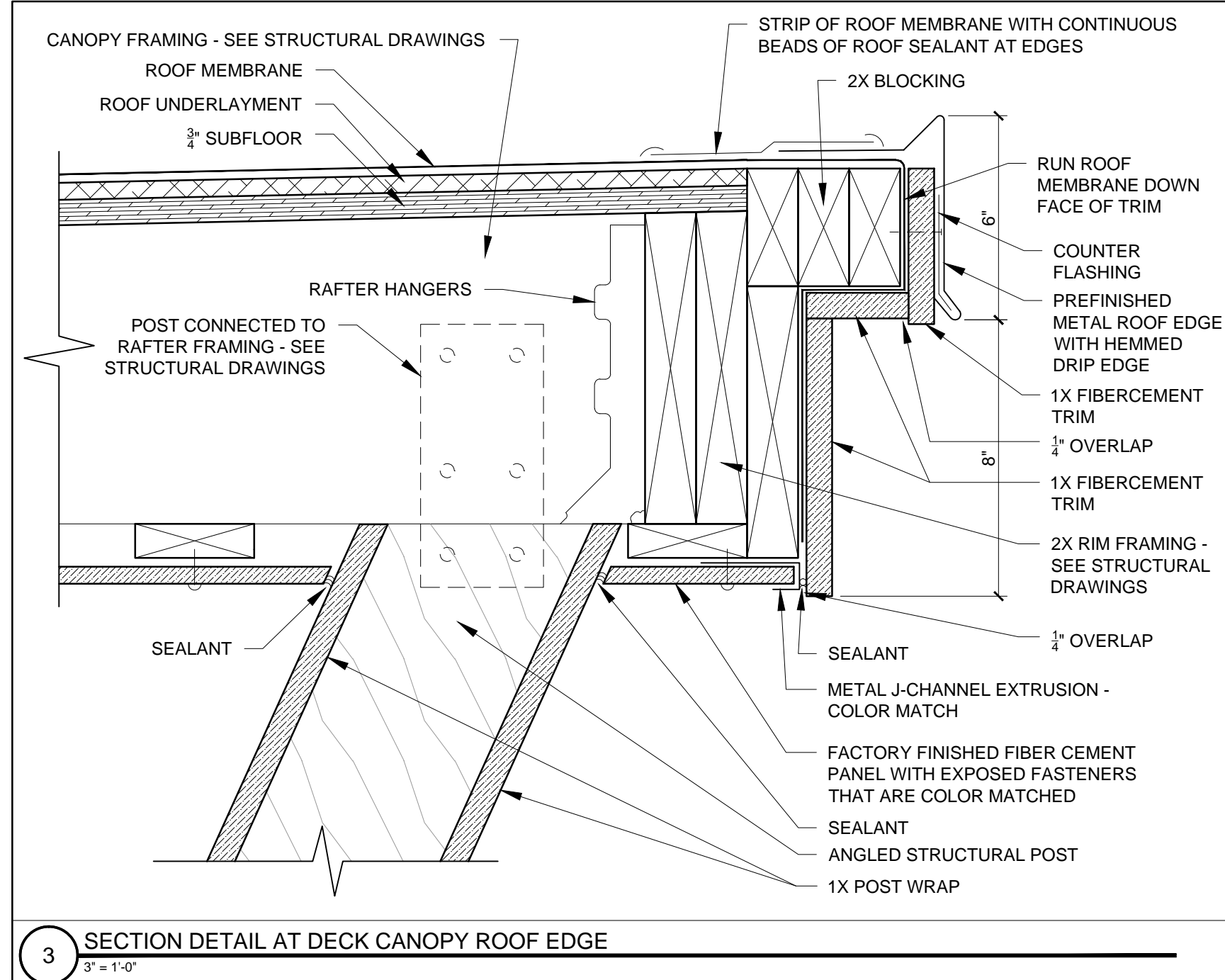
DRAWN BY: RRT, RJS

CHECKED BY: RJS

SCALE: AS NOTED

SHEET TITLE:  
DETAILS

A5-27



2 SECTION DETAIL AT DECK CANOPY FRAMING INTO EXTERIOR WALL / ROOF CONNECTION  
3/8" = 1'-0"

1 SECTION DETAIL THROUGH ANGLED POST ON ROOF DECK  
3/8" = 1'-0"