



© 2017 RYAN SENATORE ARCHITECTURE

**RESIDENCES**  
155 SHERIDAN STREET  
PORTLAND, MAINE



**RYAN SENATORE ARCHITECTURE**  
565 CONGRESS STREET  
PORTLAND, MAINE 04101  
207-650-6414  
senatorearchitecture.com

**CONSULTANTS:**  
STRUCTURAL: Structural Integrity  
77 Oak Street  
Portland, ME 04101  
207-774-4814

**REVISIONS:**

DATE: JANUARY 16, 2018

PROJECT No. 1604

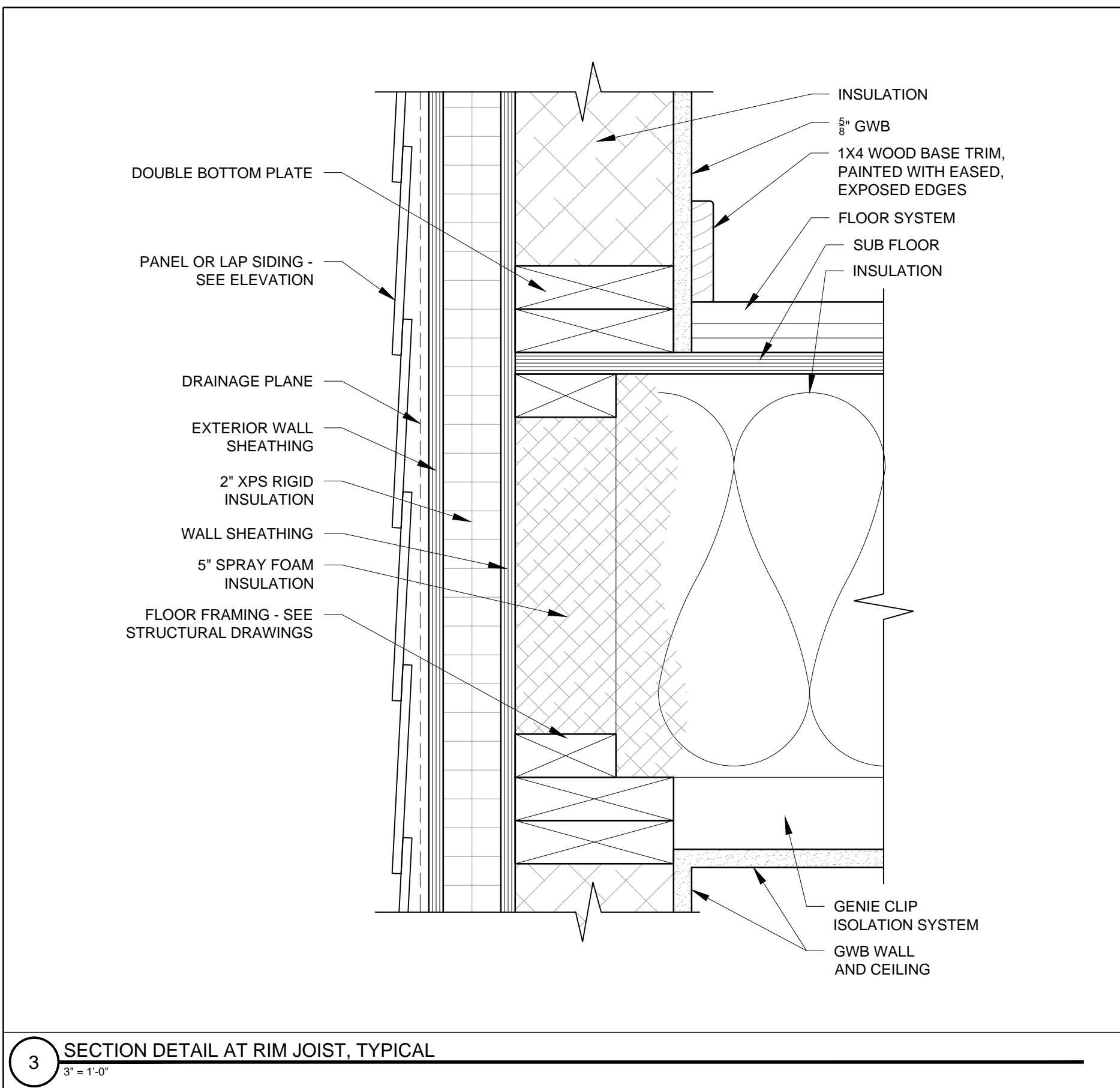
DRAWN BY: RRT, RJS

CHECKED BY: RJS

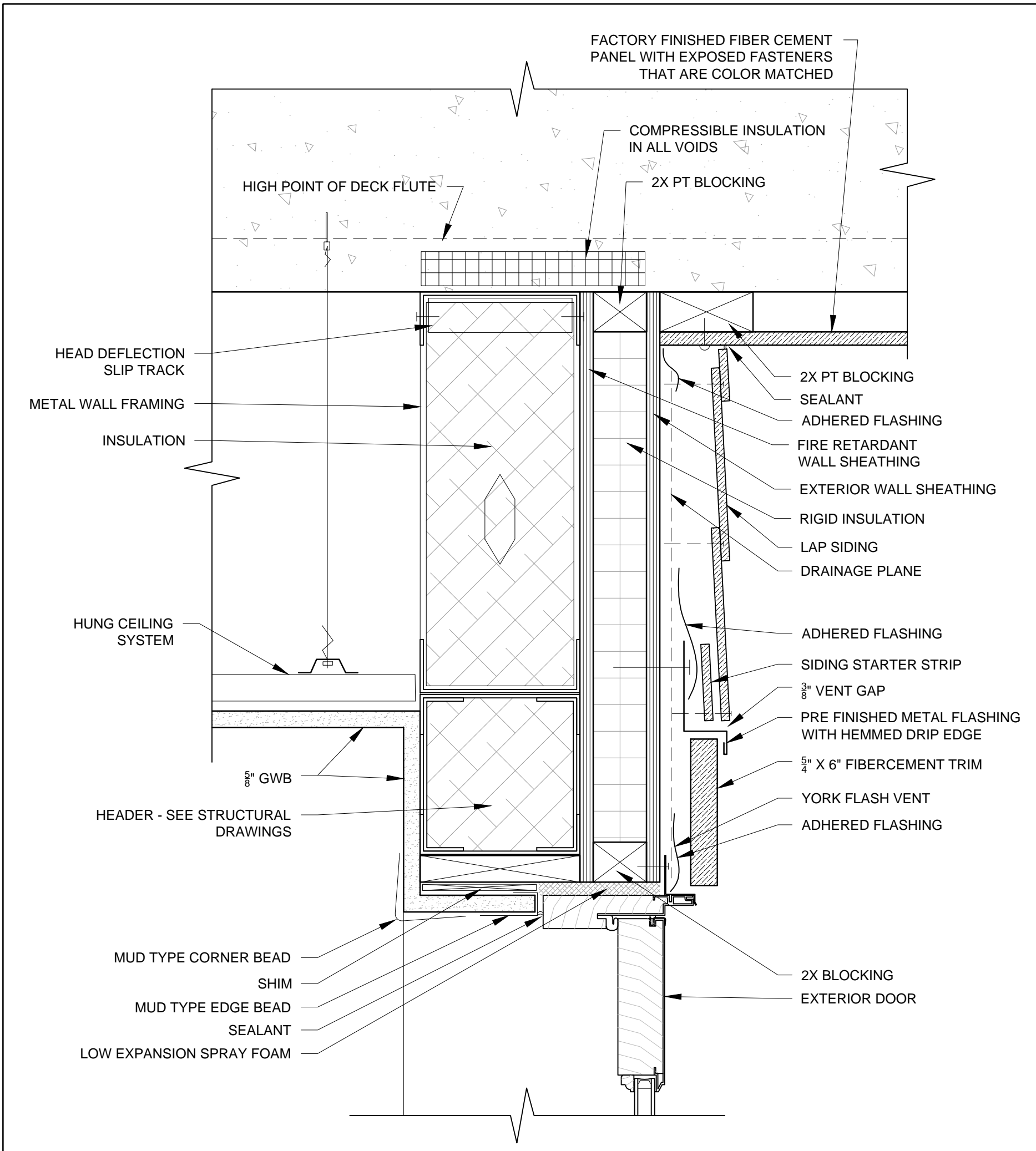
SCALE: AS NOTED

SHEET TITLE:  
**DETAILS**

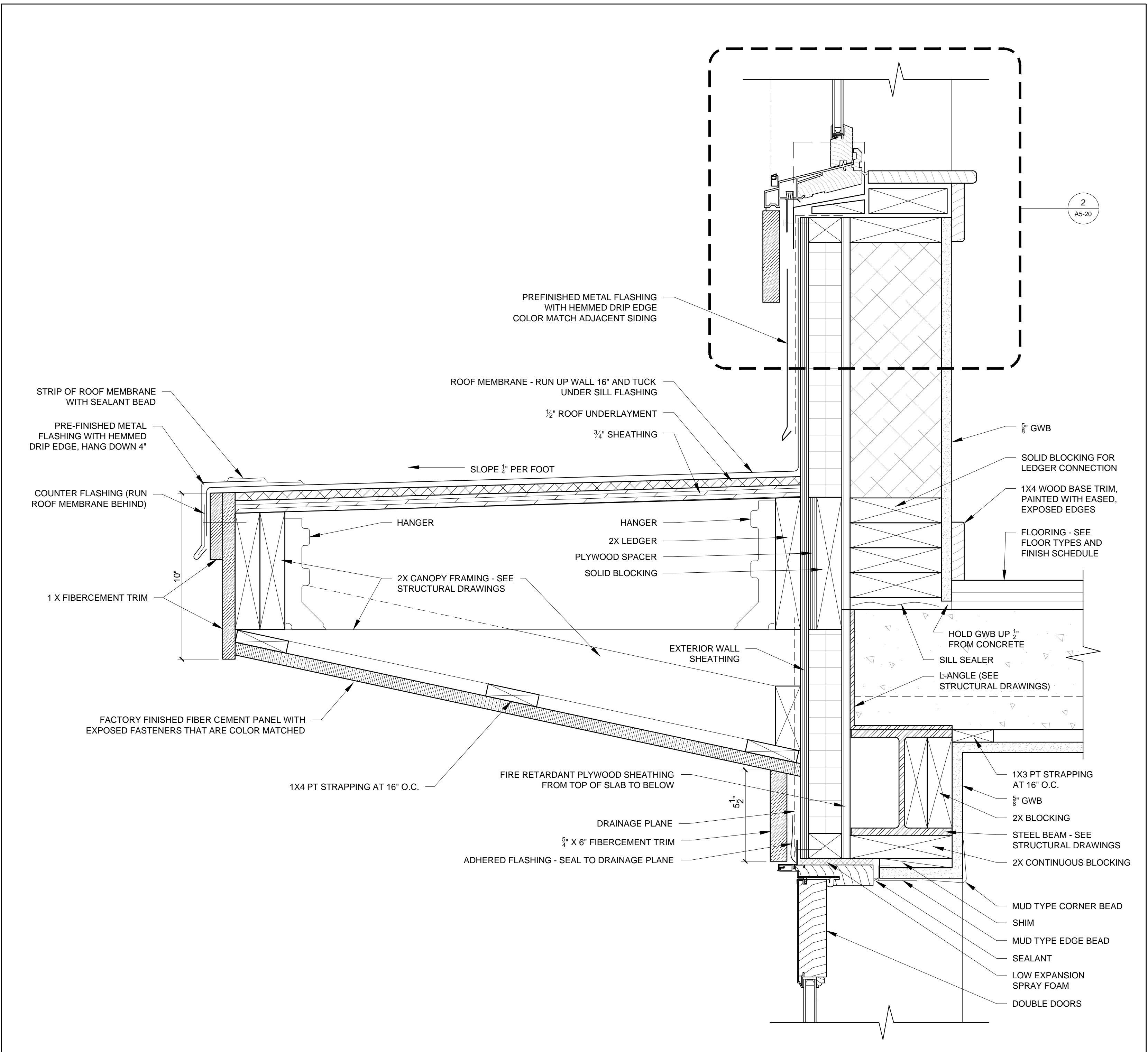
**A5-25**



3 SECTION DETAIL AT RIM JOIST, TYPICAL  
3" = 1'-0"



2 SECTION DETAIL AT SIDE DOOR HEAD  
3" = 1'-0"



1 SECTION DETAIL AT FRONT ENTRY CANOPY  
3" = 1'-0"