



© 2017 RYAN SENATORE ARCHITECTURE

RESIDENCES
155 SHERIDAN STREET
PORTLAND, MAINE



RYAN SENATORE
ARCHITECTURE
565 CONGRESS STREET
PORTLAND, MAINE 04101
207-650-6414
senatorearchitecture.com

CONSULTANTS:
STRUCTURAL:
Structural Integrity
77 Oak Street
Portland, ME 04101
207-774-4814

REVISIONS:

DATE: JANUARY 16, 2018

PROJECT No.: 1604

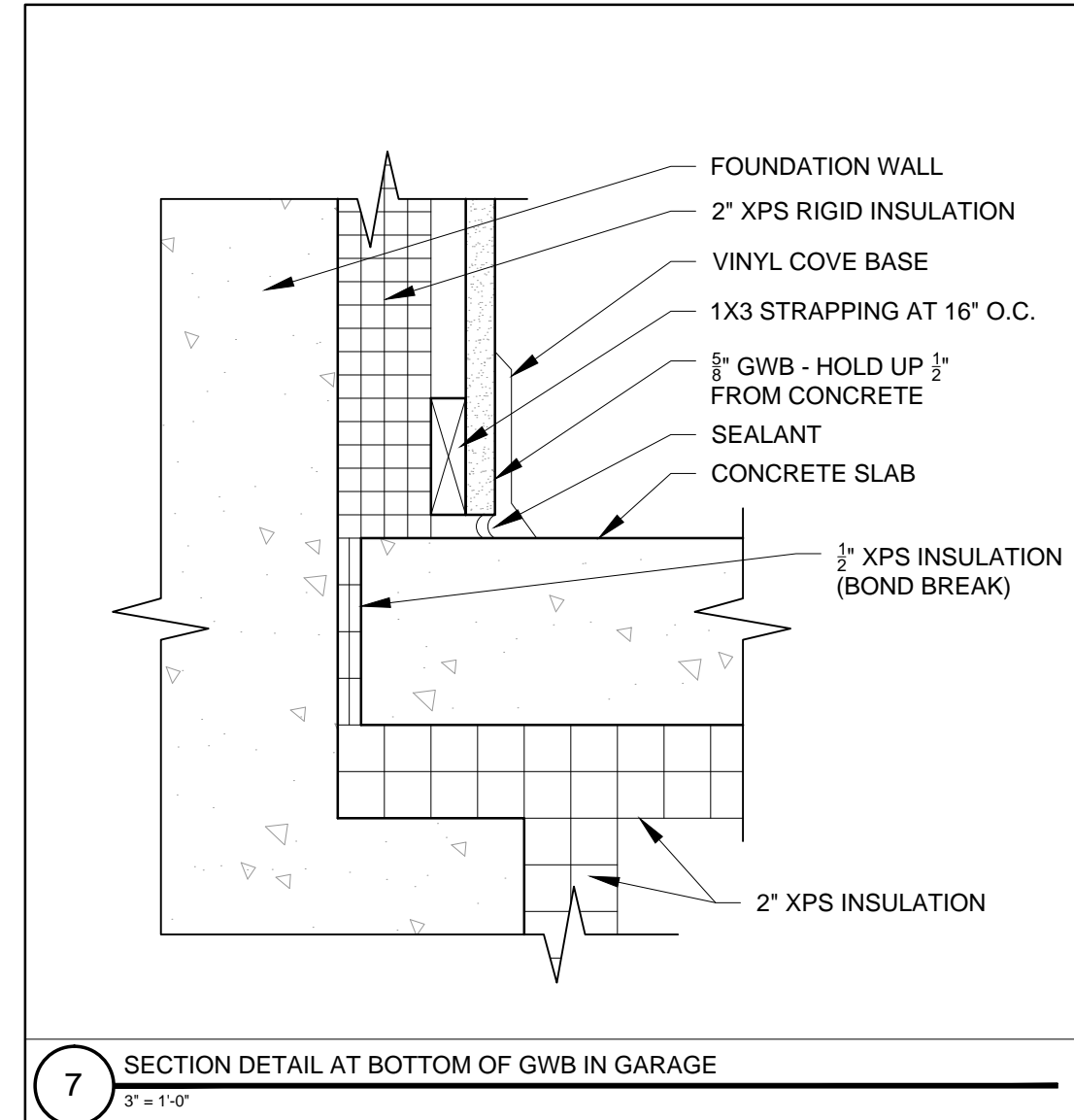
DRAWN BY: RRT, RJS

CHECKED BY: RJS

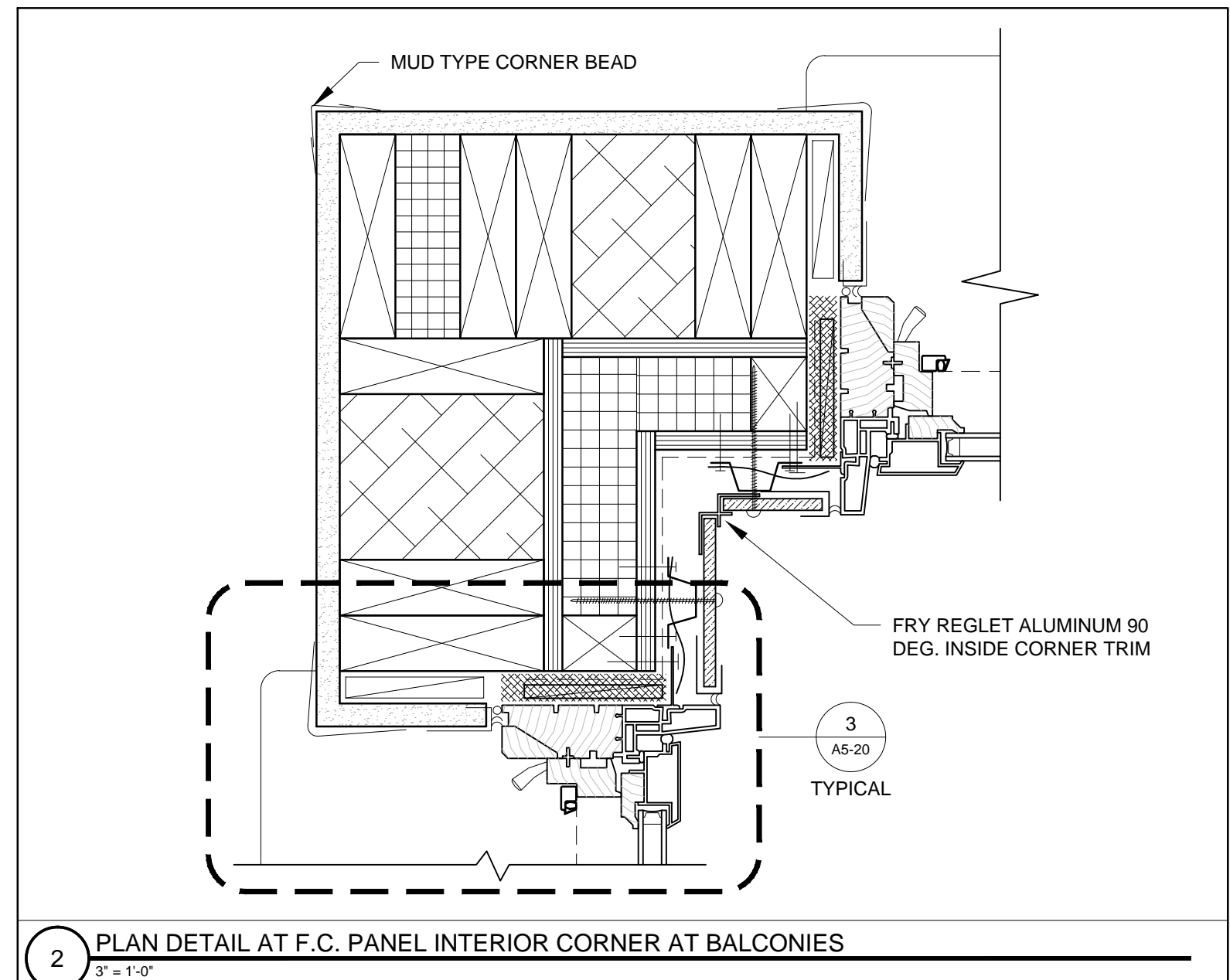
SCALE: AS NOTED

SHEET TITLE:
DETAILS

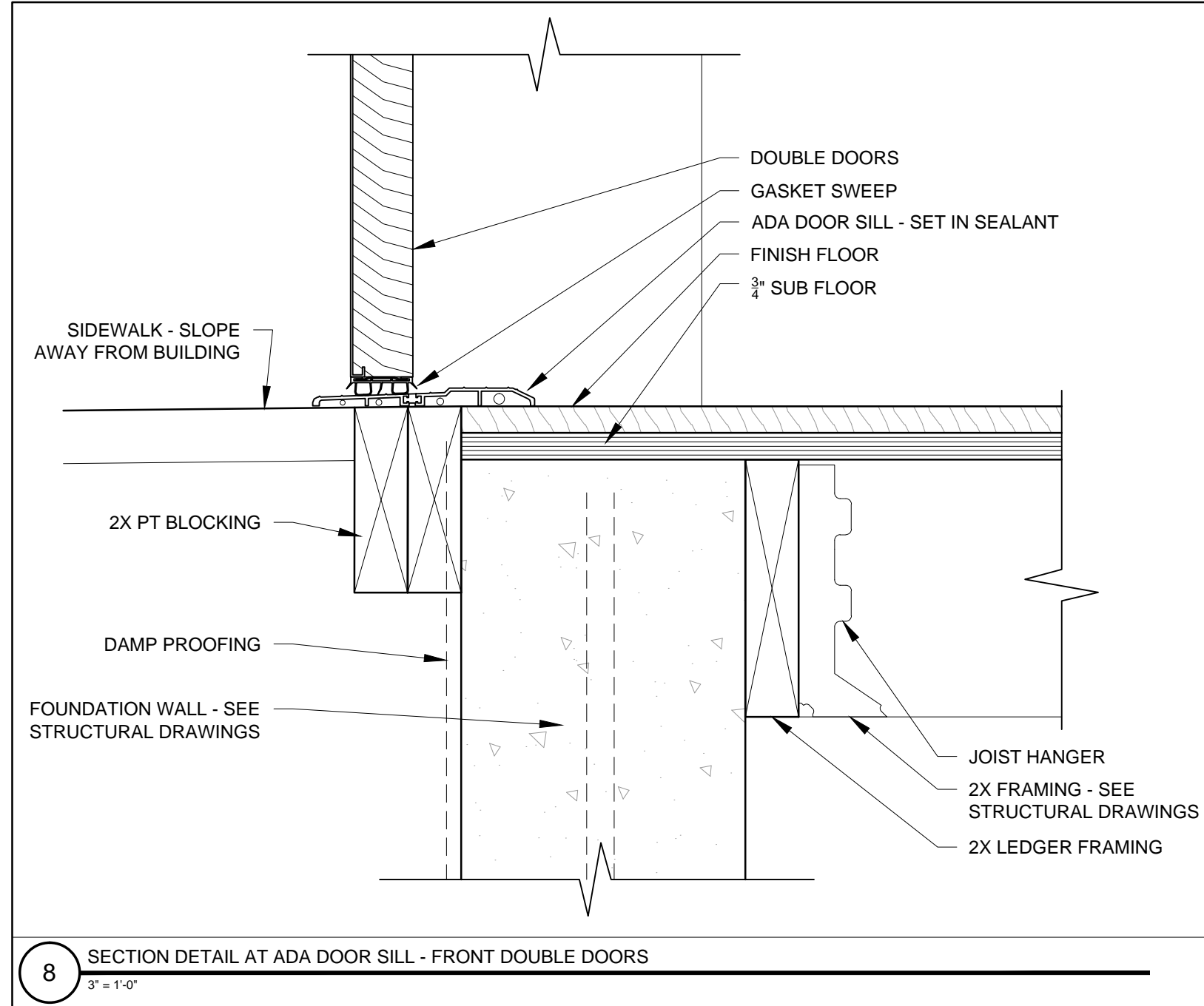
A5-22



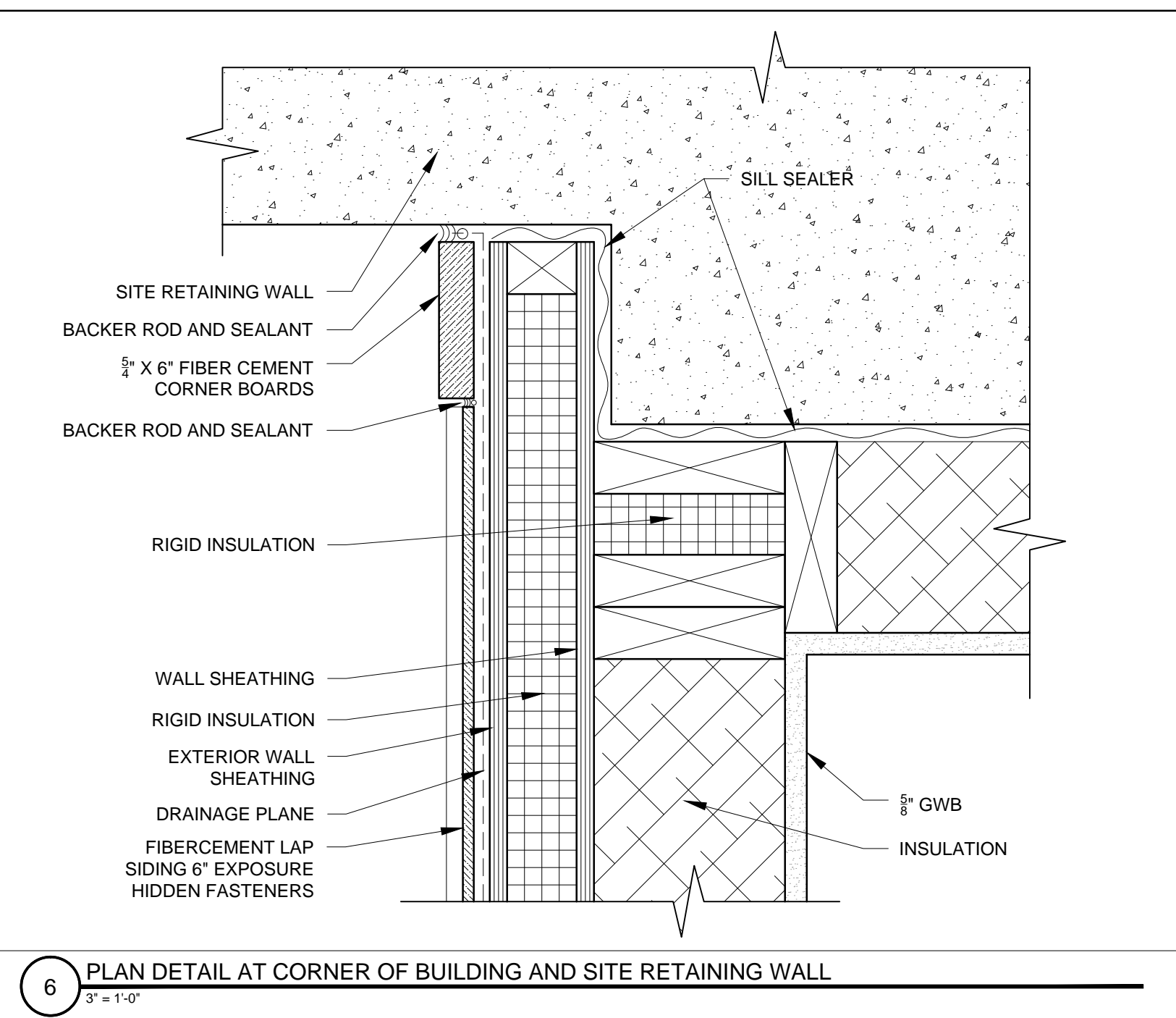
7 SECTION DETAIL AT BOTTOM OF GWB IN GARAGE
3" = 1'-0"



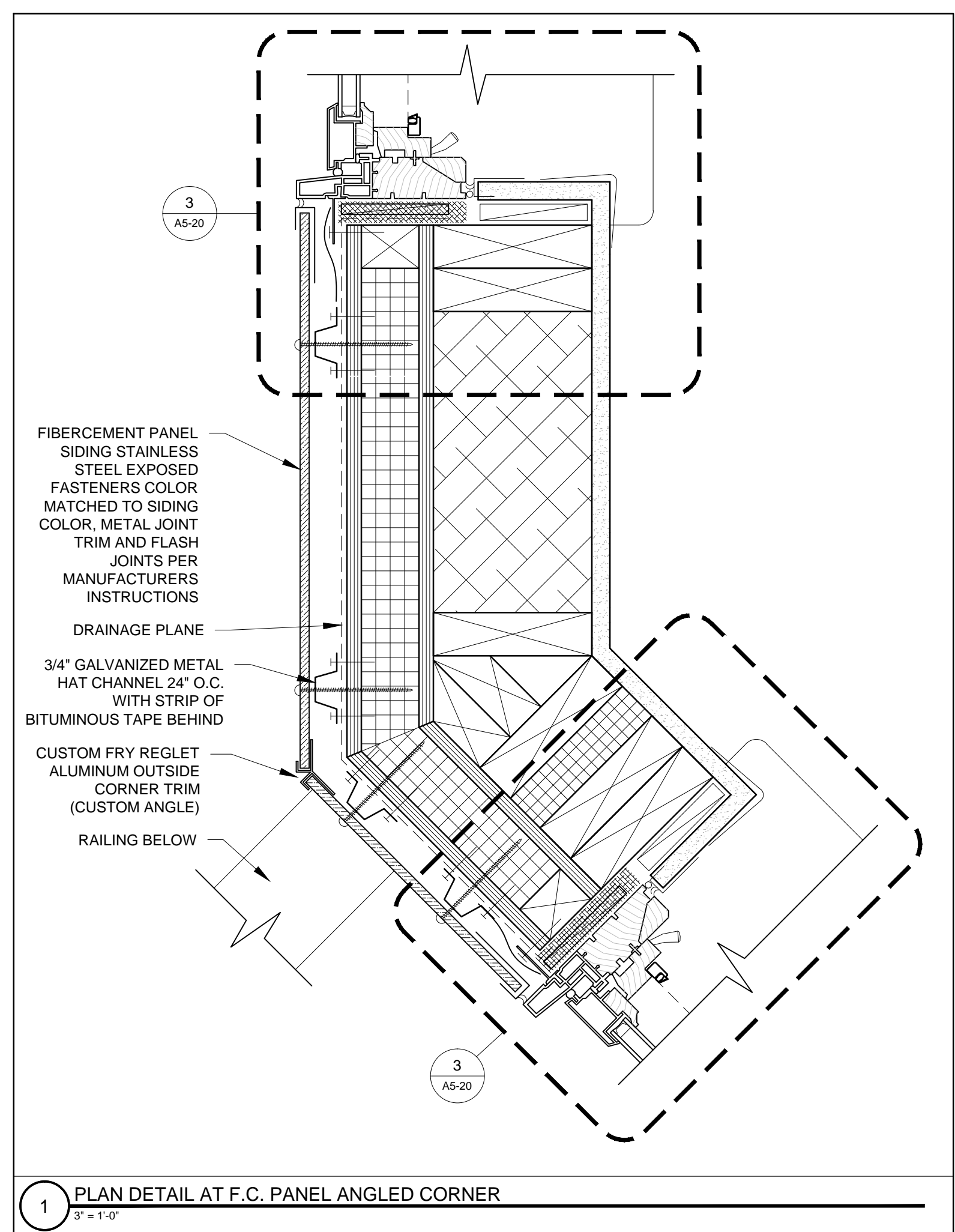
2 PLAN DETAIL AT F.C. PANEL INTERIOR CORNER AT BALCONIES
3" = 1'-0"



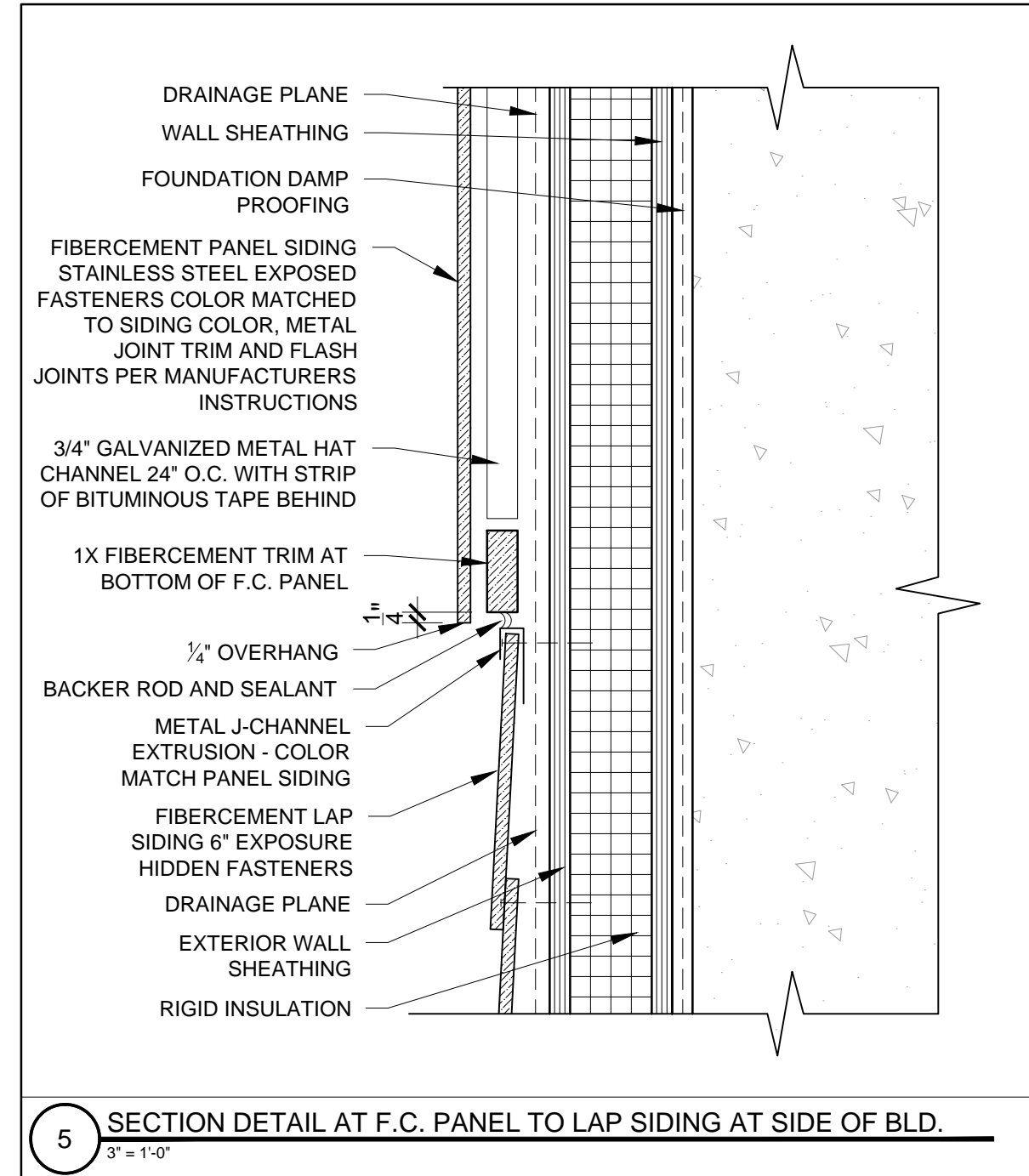
8 SECTION DETAIL AT ADA DOOR SILL - FRONT DOUBLE DOORS
3" = 1'-0"



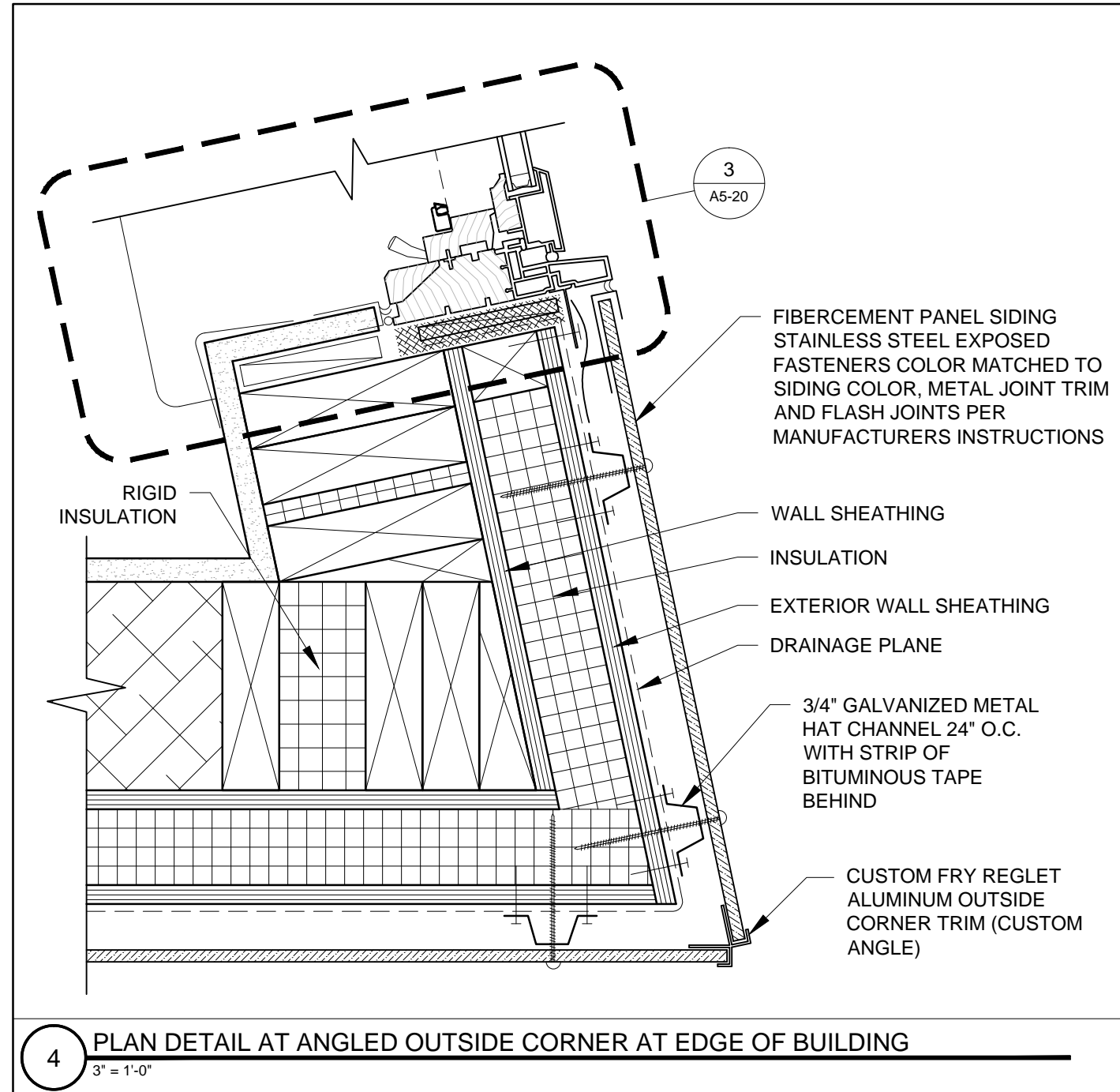
6 PLAN DETAIL AT CORNER OF BUILDING AND SITE RETAINING WALL
3" = 1'-0"



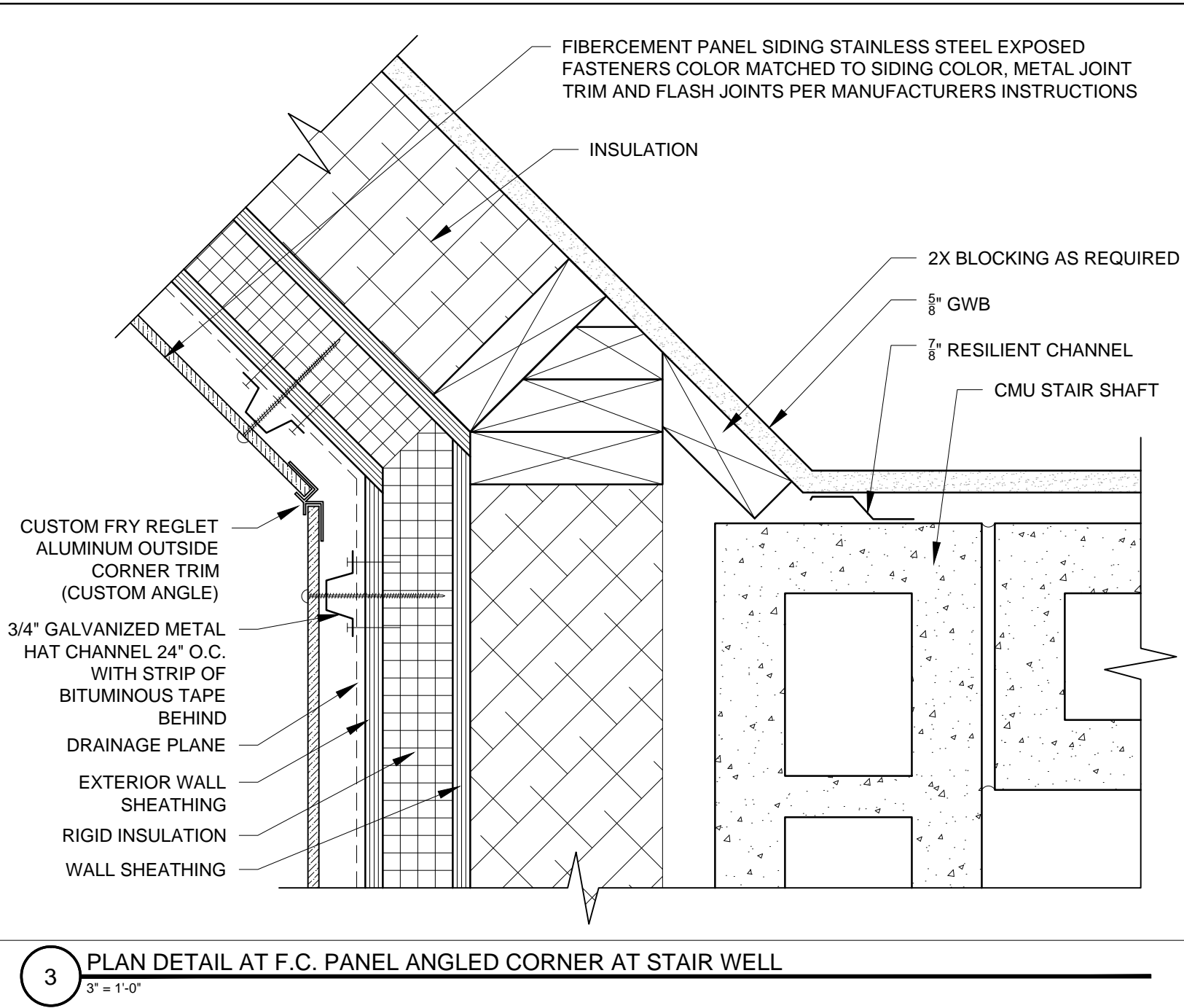
1 PLAN DETAIL AT F.C. PANEL ANGLED CORNER
3" = 1'-0"



5 SECTION DETAIL AT F.C. PANEL TO LAP SIDING AT SIDE OF BLD.
3" = 1'-0"



4 PLAN DETAIL AT ANGLED OUTSIDE CORNER AT EDGE OF BUILDING
3" = 1'-0"



3 PLAN DETAIL AT F.C. PANEL ANGLED CORNER AT STAIR WELL
3" = 1'-0"