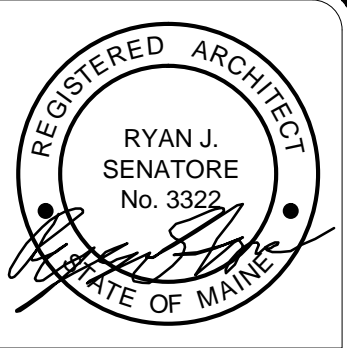
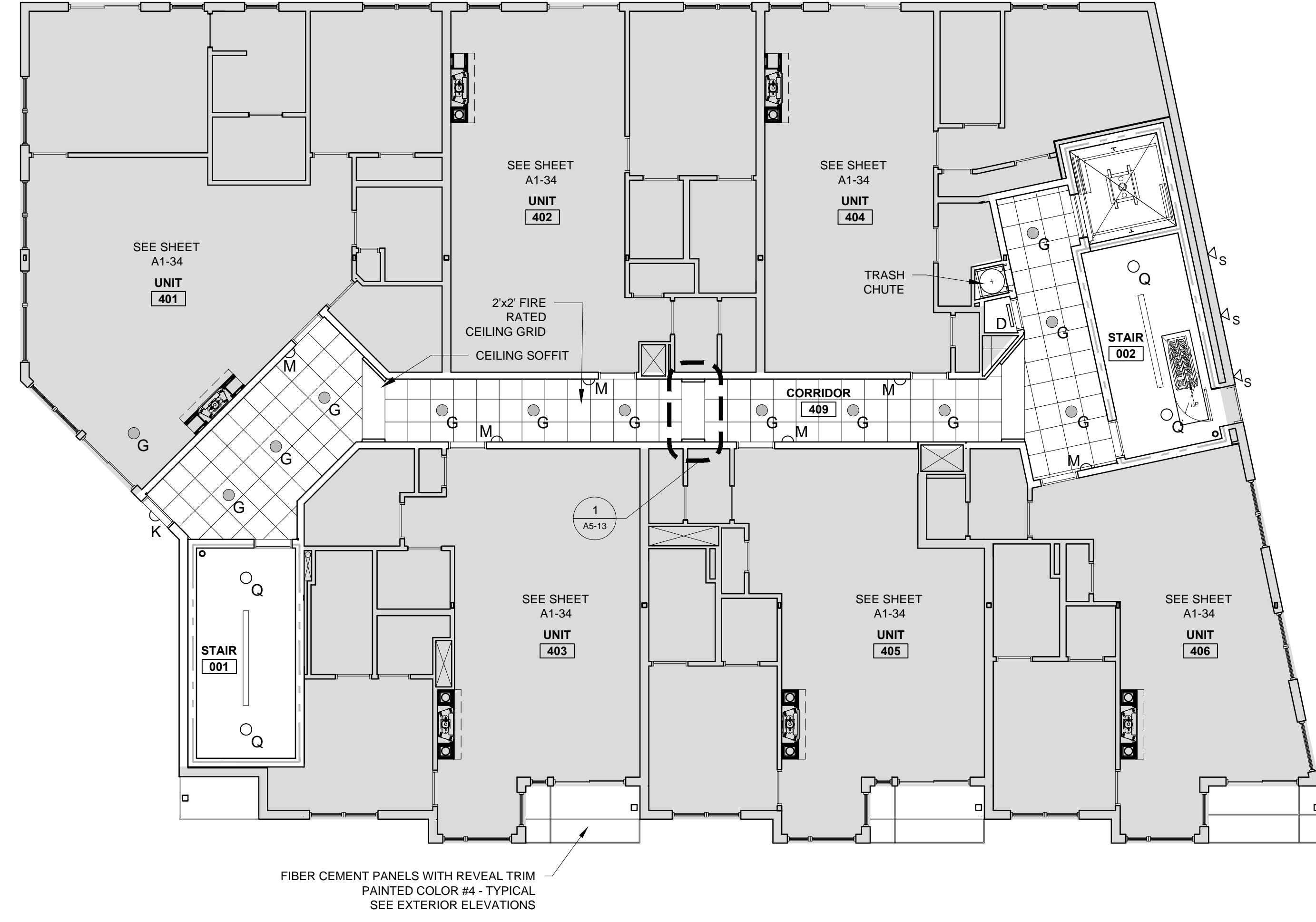


REFLECTED CEILING PLAN NOTES

- 1.) G.C. TO COORDINATE LOCATIONS OF PLUMBING CLEAN OUTS WITH ACCESS PANELS AS SHOWN ON REFLECTED CEILING PLANS
- 2.) G.C. TO PROVIDE ACCESS PANELS AS REQUIRED FOR ALL ELEMENTS (SPRINKLER, VALVES, ETC) NOT SHOWN ON THIS REFLECTED CEILING PLAN)
- 3.) G.C. TO PROVIDE METAL FRAMING AND BLOCKING REQUIRED FOR ALL ACCESS PANELS AND CONTROL JOINTS
- 4.) ALL ACCESS PANELS TO BE FIRE RATED TO MATCH THE CEILING THEY ARE INSTALLED WITHIN
- 5.) FOR LIGHTING PLAN, SEE ELECTRICAL DRAWINGS

LIGHTING LEGEND

SYMBOL	TAG	DESCRIPTION
○	A	SURFACE MOUNT - TBD
○	B	SURFACE MOUNTED - TBD
○	C	SURFACE MOUNT - IN CLOSETS
○	D	SURFACE MOUNTED ON WALL ABOVE DOOR
○	E	WALL SCONCE IN BATHROOM OVER VANITY
○	F	SURFACE MOUNT - WET LOCATION
○	G	SURFACE MOUNT - IN CORRIDORS / FITNESS
○	H	SURFACE MOUNT - CENTER IN BEDROOMS
○	J	SURFACE MOUNT - WET LOCATION
○	K	EXTERIOR CUT OFF DOWN LIGHT OVER DOOR
○	L	SURFACE MOUNT - IN LOBBY
○	M	INTERIOR SCONCE LIGHTING
○	N	1'X4' FLORESCENT LIGHT
○	P	PENDANT OVER ISLAND
○	Q	LED UTILITY LIGHTING IN STAIRWELLS
○	R	LED PARKING GARAGE LIGHTING
○	S	EXTERIOR SCONCE DOWN LIGHTING
○	T	UNDER COUNTER LIGHTING
□		CEILING GRILL



© 2017 RYAN SENATORE ARCHITECTURE

**RESIDENCES**  
 155 SHERIDAN STREET  
 PORTLAND, MAINE



**RYAN SENATORE**  
 ARCHITECTURE  
 565 CONGRESS STREET  
 PORTLAND, MAINE 04101  
 207-650-6414  
 rsenatorearchitecture.com

**CONSULTANTS:**  
**STRUCTURAL:**  
 Structural Integrity  
 77 Oak Street  
 Portland, ME 04101  
 207-774-4814

REVISIONS:

DATE: JANUARY 16, 2018

PROJECT No. 1604

DRAWN BY: RRT, RJS

CHECKED BY: RJS

SCALE: AS NOTED

SHEET TITLE:  
**FOURTH FLOOR**  
**COMMON**  
**AREAS RCP**

**A1-9**

1 FOURTH FLOOR COMMON AREAS REFLECTED CEILING PLAN  
 1/8" = 1'-0"