

© 2017 RYAN SENATORE ARCHITECTURE

**RESIDENCES**  
155 SHERIDAN STREET  
PORTLAND, MAINE



**RYAN SENATORE ARCHITECTURE**  
565 CONGRESS STREET  
PORTLAND, MAINE 04101  
207-650-8414  
senatorearchitecture.com

**CONSULTANTS:**  
**STRUCTURAL:**  
Structural Integrity  
77 Oak Street  
Portland, ME 04101  
207-774-4814

**REVISIONS:**

**DATE:** JANUARY 16, 2018

**PROJECT No.:** 1604

**DRAWN BY:** RRT, RJS

**CHECKED BY:** RJS

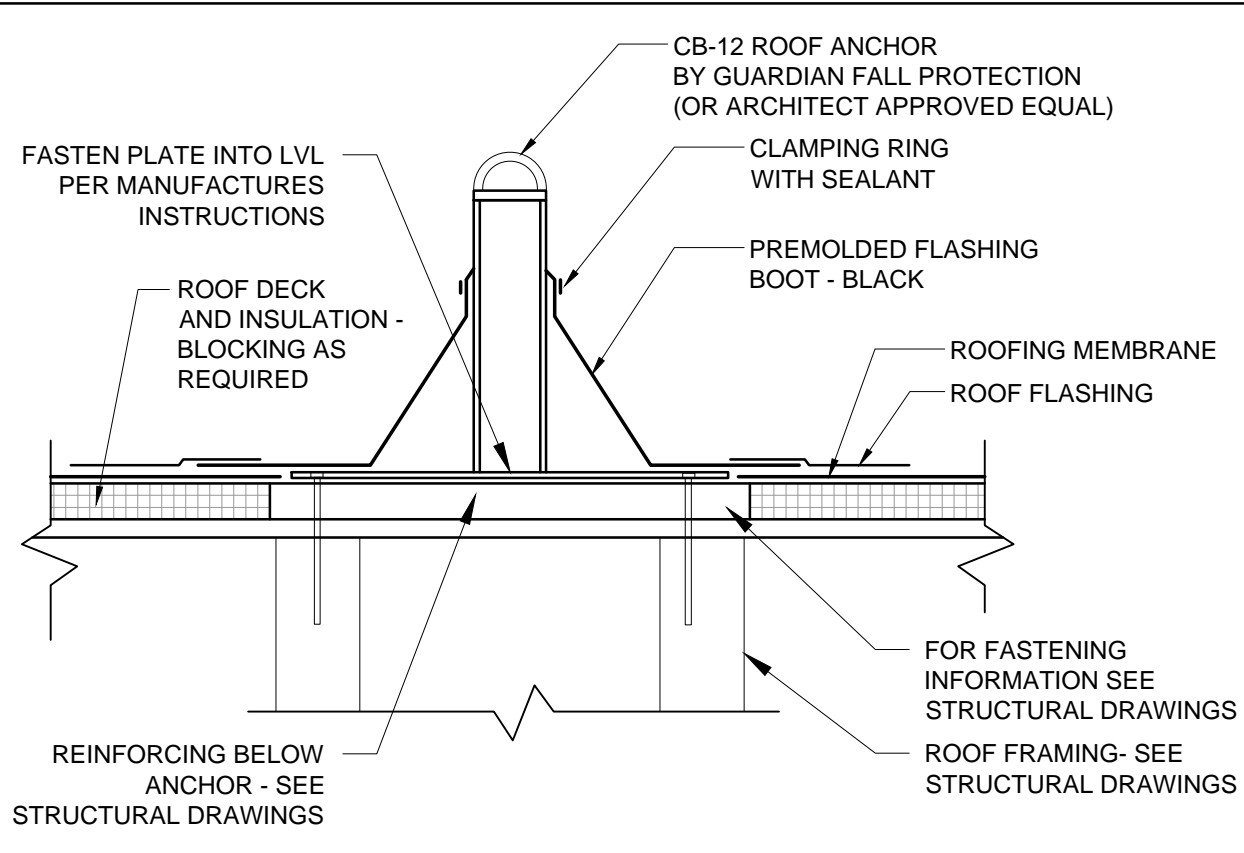
**SCALE:** AS NOTED

**SHEET TITLE:**  
ROOF PLAN  
(PITCH AND DRAIN)

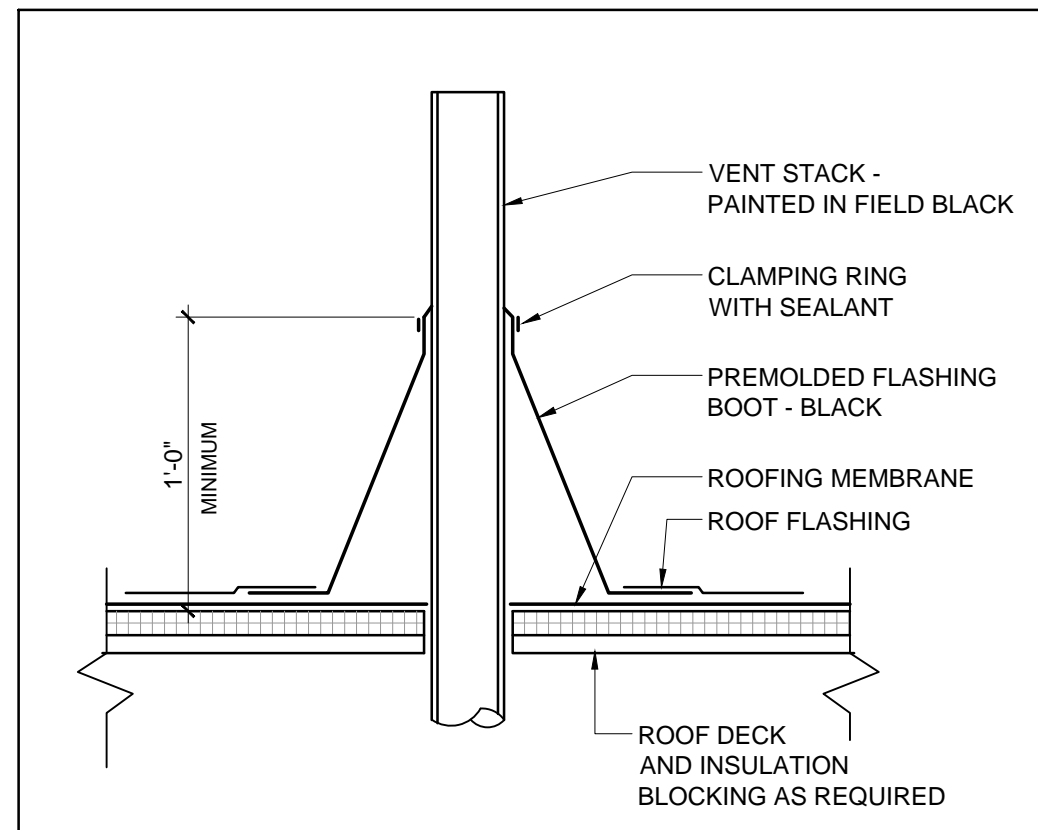
**A1-5B**

**ROOF PITCH LEGEND**

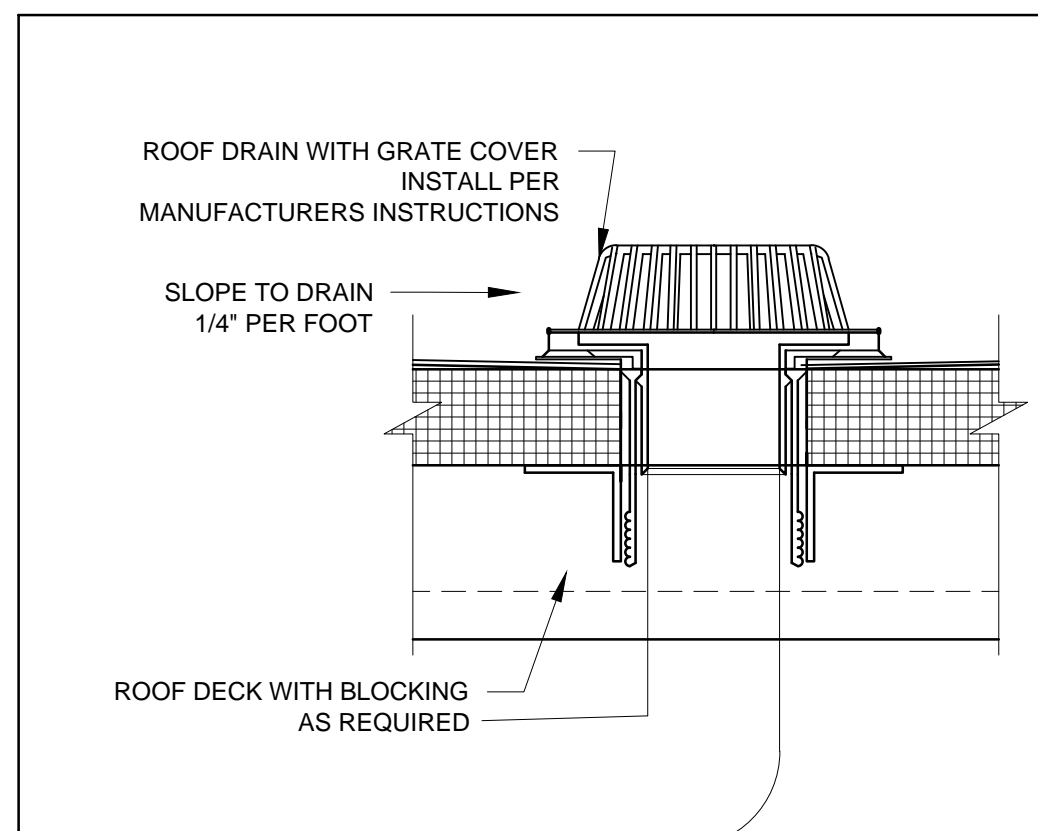
RD = ROOF DRAIN  
ORD = OVERFLOW ROOF DRAIN



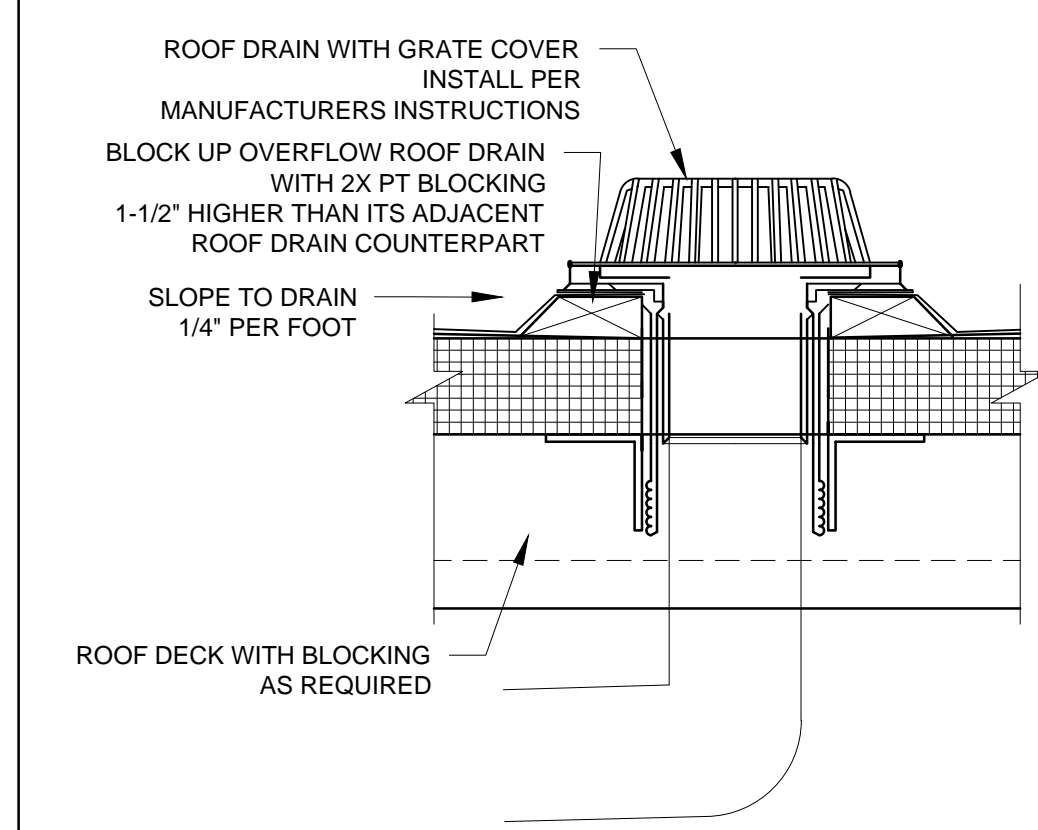
**6 TYPICAL SAFETY ANCHOR AT MEMBRANE ROOF**  
1/12" = 1'-0"



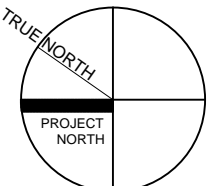
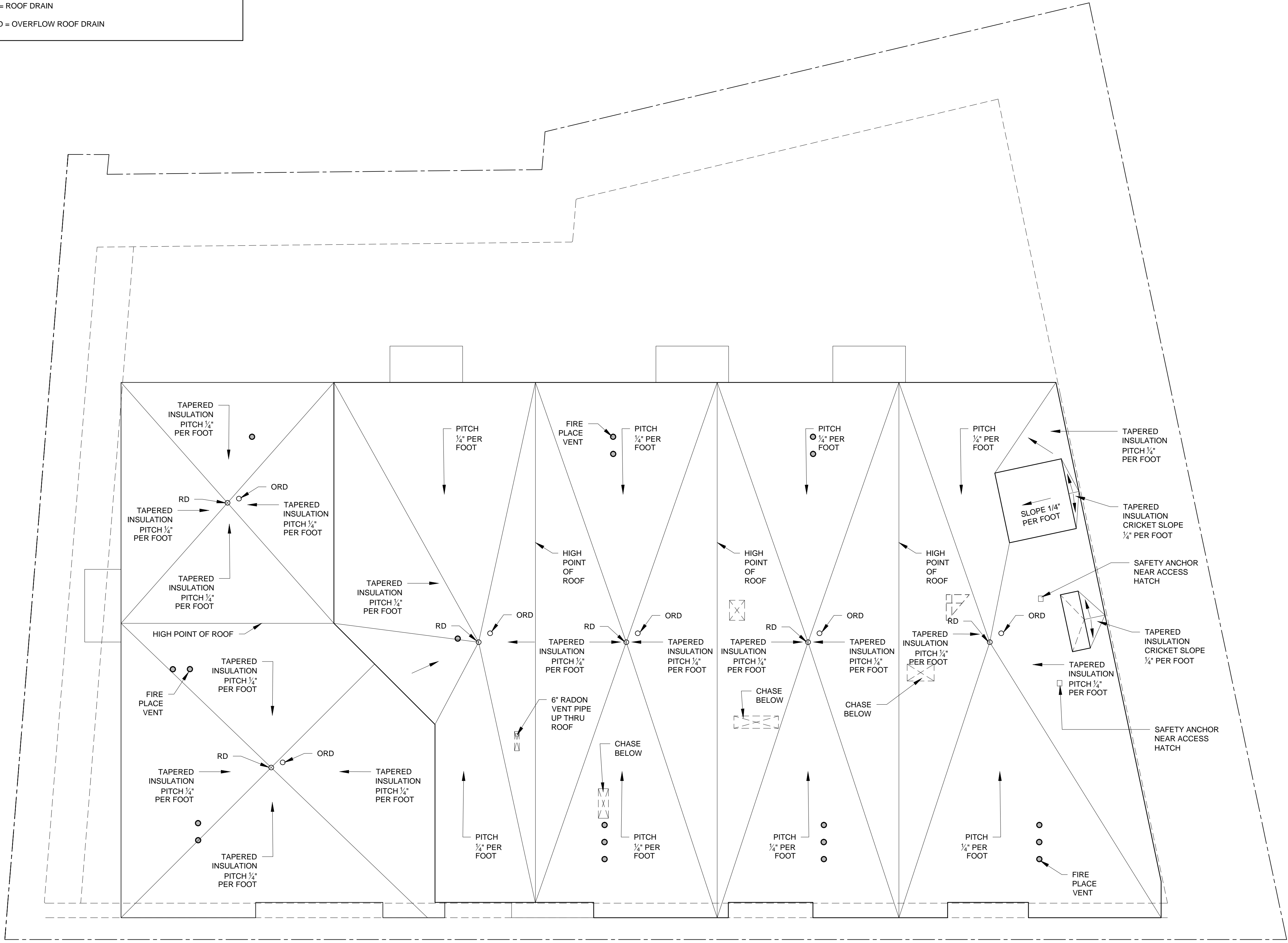
**4 TYPICAL PIPE PENETRATION DETAIL AT MEMBRANE ROOF**  
1/12" = 1'-0"



**3 ROOF DRAIN - TYPICAL DETAIL**  
1/12" = 1'-0"



**2 OVERFLOW ROOF DRAIN - TYPICAL DETAIL**  
1/12" = 1'-0"



**1 ROOF PLAN (SHOWING ROOF PITCH AND DRAINS)**  
1/8" = 1'-0"