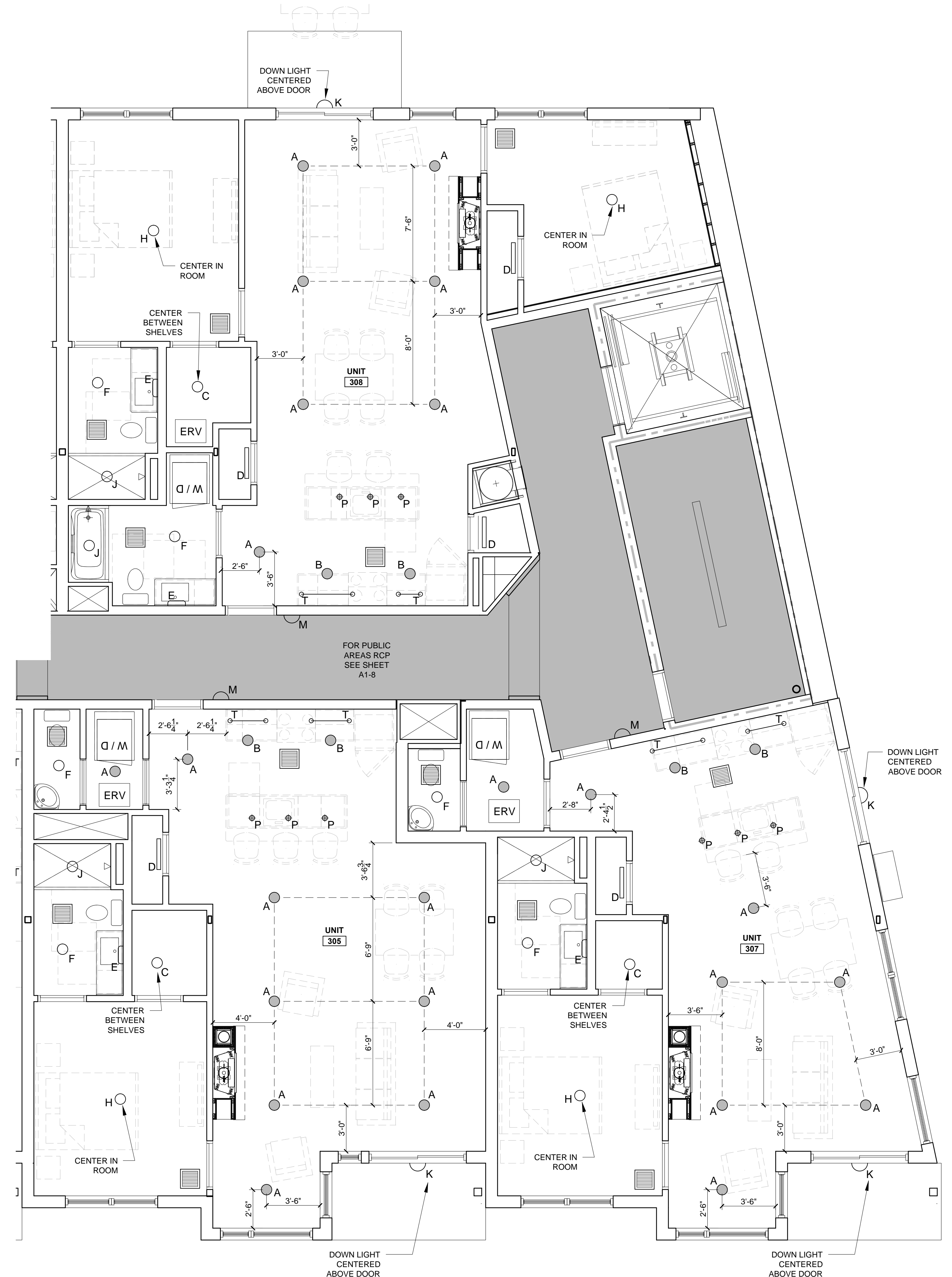


- REFLECTED CEILING PLAN NOTES
- 1.) G.C. TO COORDINATE LOCATIONS OF PLUMBING CLEAN OUTS WITH ACCESS PANELS AS SHOWN ON REFLECTED CEILING PLANS
 - 2.) G.C. TO PROVIDE ACCESS PANELS AS REQUIRED FOR ALL ELEMENTS (SPRINKLER, VALVES, ETC) NOT SHOWN ON THIS REFLECTED CEILING PLAN
 - 3.) G.C. TO PROVIDE METAL FRAMING AND BLOCKING REQUIRED FOR ALL ACCESS PANELS AND CONTROL JOINTS
 - 4.) ALL ACCESS PANELS TO BE FIRE RATED TO MATCH THE CEILING THEY ARE INSTALLED WITHIN
 - 5.) FOR LIGHTING PLAN, SEE ELECTRICAL DRAWINGS

LIGHTING LEGEND

SYMBOL	TAG	DESCRIPTION
●	A	SURFACE MOUNT - TBD
●	B	SURFACE MOUNTED - TBD
○	C	SURFACE MOUNT - IN CLOSETS
○	D	SURFACE MOUNTED ON WALL ABOVE DOOR
○	E	WALL SCONCE IN BATHROOM OVER VANITY
○	F	SURFACE MOUNT - WET LOCATION
○	G	SURFACE MOUNT - IN CORRIDORS / FITNESS
○	H	SURFACE MOUNT - CENTER IN BEDROOMS
○	J	SURFACE MOUNT - WET LOCATION
○	K	EXTERIOR CUT OFF DOWN LIGHT OVER DOOR
○	L	SURFACE MOUNT - IN LOBBY
○	M	INTERIOR SCONCE LIGHTING
○	N	1'X4' FLORESCENT LIGHT
○	P	PENDANT OVER ISLAND
○	Q	LED UTILITY LIGHTING IN STAIRWELLS
○	R	LED PARKING GARAGE LIGHTING
○	S	EXTERIOR SCONCE DOWN LIGHTING
○	T	UNDER COUNTER LIGHTING
□		CEILING GRILL



1 UNIT 305, 307-308 REFLECTED CILING PLANS
1/4" = 1'-0"



© 2017 RYAN SENATORE ARCHITECTURE

RESIDENCES
155 SHERIDAN STREET
PORTLAND, MAINE



RYAN SENATORE
ARCHITECTURE
565 CONGRESS STREET
PORTLAND, MAINE 04101
207-650-6414
senatorearchitecture.com

CONSULTANTS:
STRUCTURAL:
Structural Integrity
77 Oak Street
Portland, ME 04101
207-774-4614

REVISIONS:

DATE: JANUARY 16, 2018

PROJECT No. 1604

DRAWN BY: RRT, RJS

CHECKED BY: RJS

SCALE: AS NOTED

SHEET TITLE:
UNIT 305,
307-308
REFLECTED
CEILING PLANS

A1-33