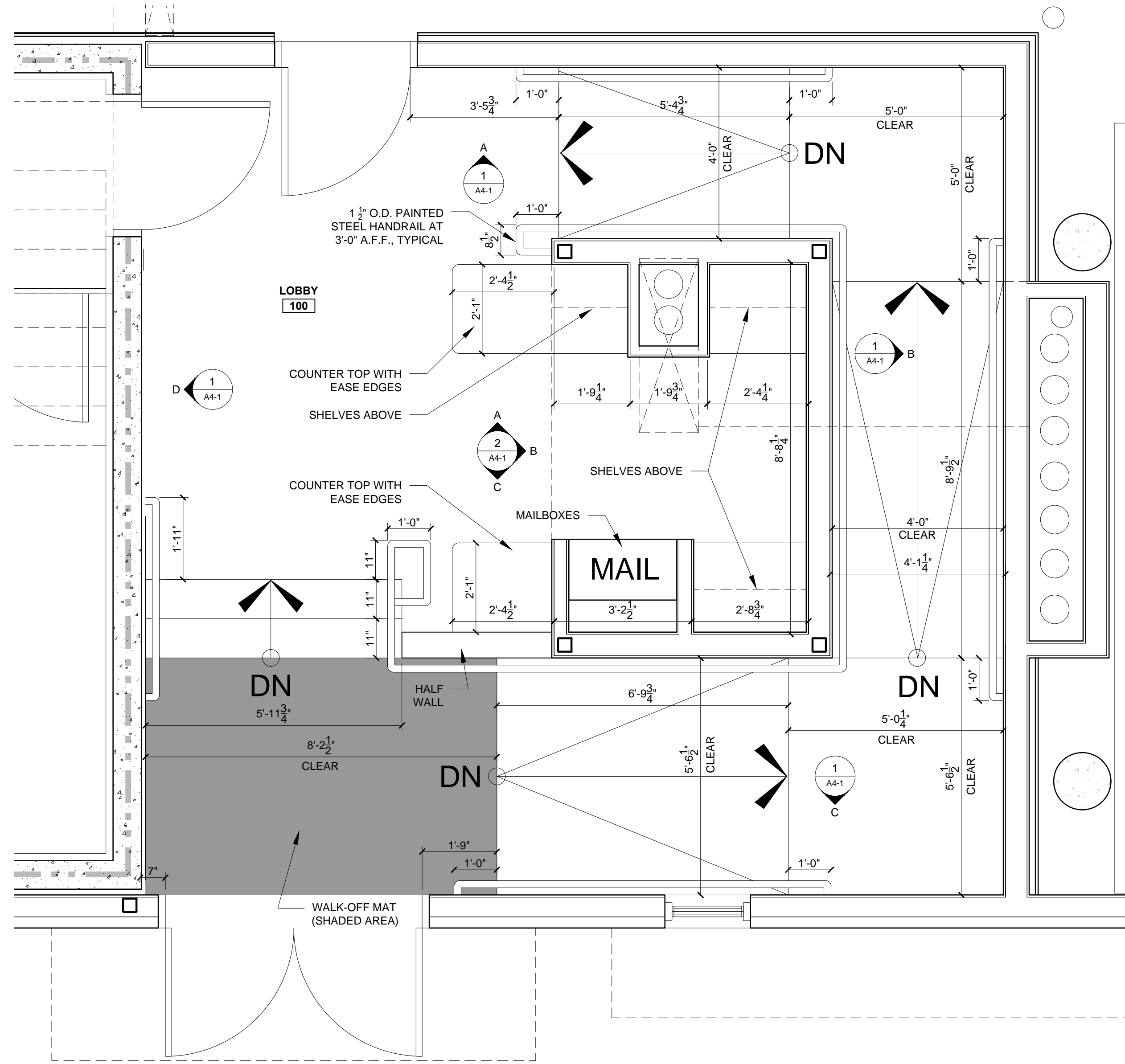


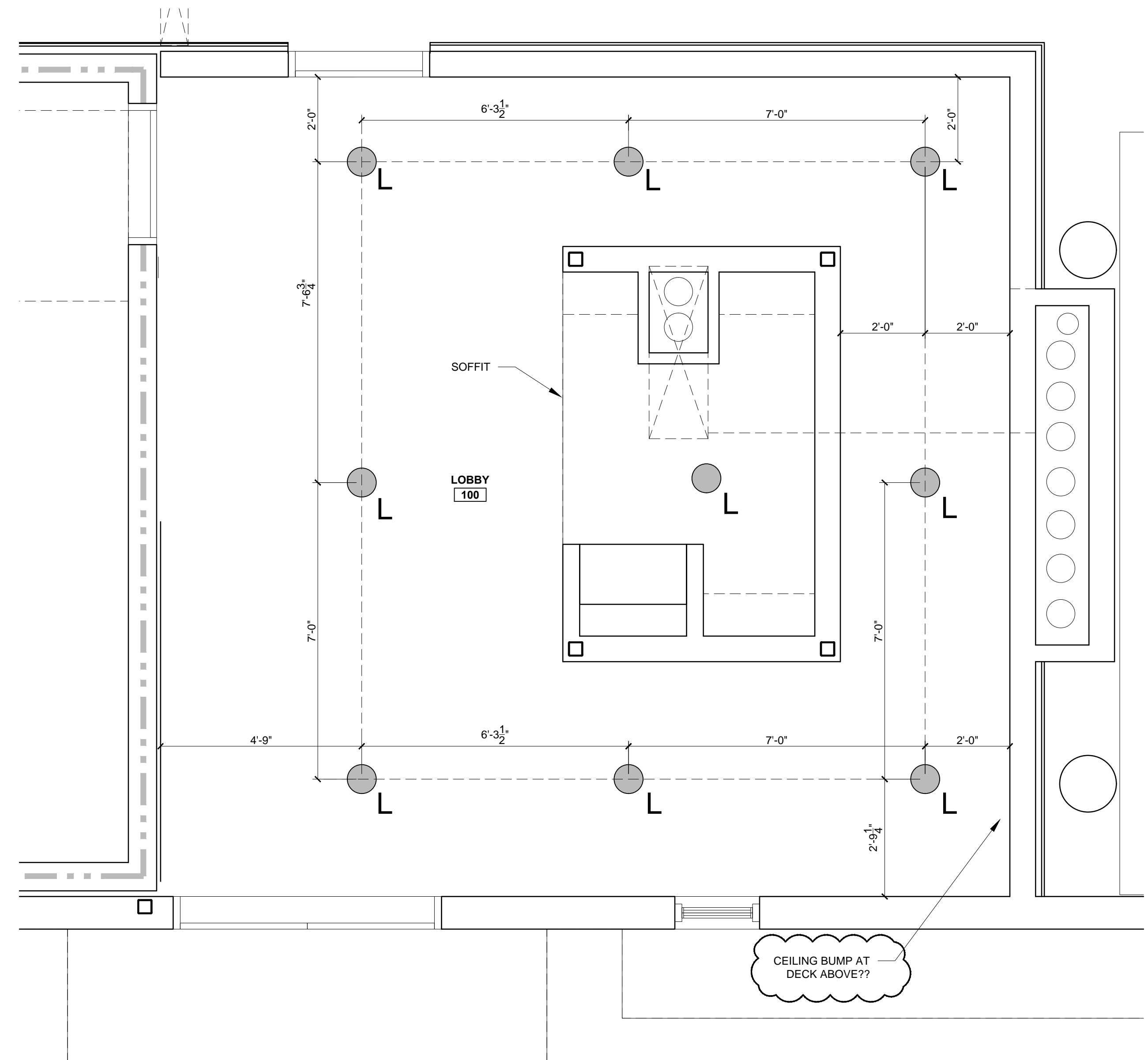
REFLECTED CEILING PLAN NOTES

- 1) G.C. TO COORDINATE LOCATIONS OF PLUMBING CLEAN OUTS WITH ACCESS PANELS AS SHOWN ON REFLECTED CEILING PLANS
- 2) G.C. TO PROVIDE ACCESS PANELS AS REQUIRED FOR ALL ELEMENTS (SPRINKLER, VALVES, ETC) NOT SHOWN ON THIS REFLECTED CEILING PLAN
- 3) G.C. TO PROVIDE METAL FRAMING AND BLOCKING REQUIRED FOR ALL ACCESS PANELS AND CONTROL JOINTS
- 4) ALL ACCESS PANELS TO BE FIRE RATED TO MATCH THE CEILING THEY ARE INSTALLED WITHIN
- 5) FOR LIGHTING PLAN, SEE ELECTRICAL DRAWINGS

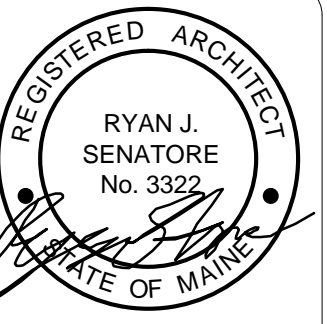
SYMBOL	TAG	DESCRIPTION
●	A	SURFACE MOUNT - TBD
○	B	SURFACE MOUNTED - TBD
○	C	SURFACE MOUNT - IN CLOSETS
□	D	SURFACE MOUNTED ON WALL ABOVE DOOR
□	E	WALL SCONCE IN BATHROOM OVER VANITY
○	F	SURFACE MOUNT - WET LOCATION
○	G	SURFACE MOUNT - IN CORRIDORS / FITNESS
○	H	SURFACE MOUNT - CENTER IN BEDROOMS
○	J	SURFACE MOUNT - WET LOCATION
○	K	EXTERIOR CUT OFF DOWN LIGHT OVER DOOR
○	L	SURFACE MOUNT - IN LOBBY
○	M	INTERIOR SCONCE LIGHTING
□	N	1'X4' FLORESCENT LIGHT
○	P	PENDANT OVER ISLAND
○	Q	LED UTILITY LIGHTING IN STAIRWELLS
○	R	LED PARKING GARAGE LIGHTING
○	S	EXTERIOR SCONCE DOWN LIGHTING
○	T	UNDER COUNTER LIGHTING
□		CEILING GRILL



1 LOBBY PLAN
1/2" = 1'-0"



2 LOBBY REFLECTED CEILING PLAN
1/2" = 1'-0"



© 2017 RYAN SENATORE ARCHITECTURE

RESIDENCES
155 SHERIDAN STREET
PORTLAND, MAINE



RYAN SENATORE
ARCHITECTURE
565 CONGRESS STREET
PORTLAND, MAINE 04101
207-650-6414
senatorearchitect.com

CONSULTANTS:
STRUCTURAL:
Structural Integrity
77 Oak Street
Portland, ME 04101
207-774-4814

REVISIONS:

DATE: JANUARY 16, 2018
PROJECT No. 1604
DRAWN BY: RRT, RJS
CHECKED BY: RJS
SCALE: AS NOTED

SHEET TITLE:
LOBBY PLAN

A1-29