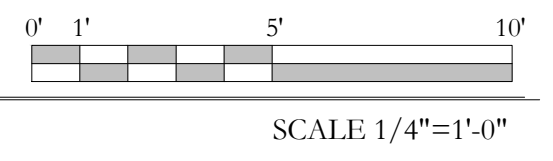


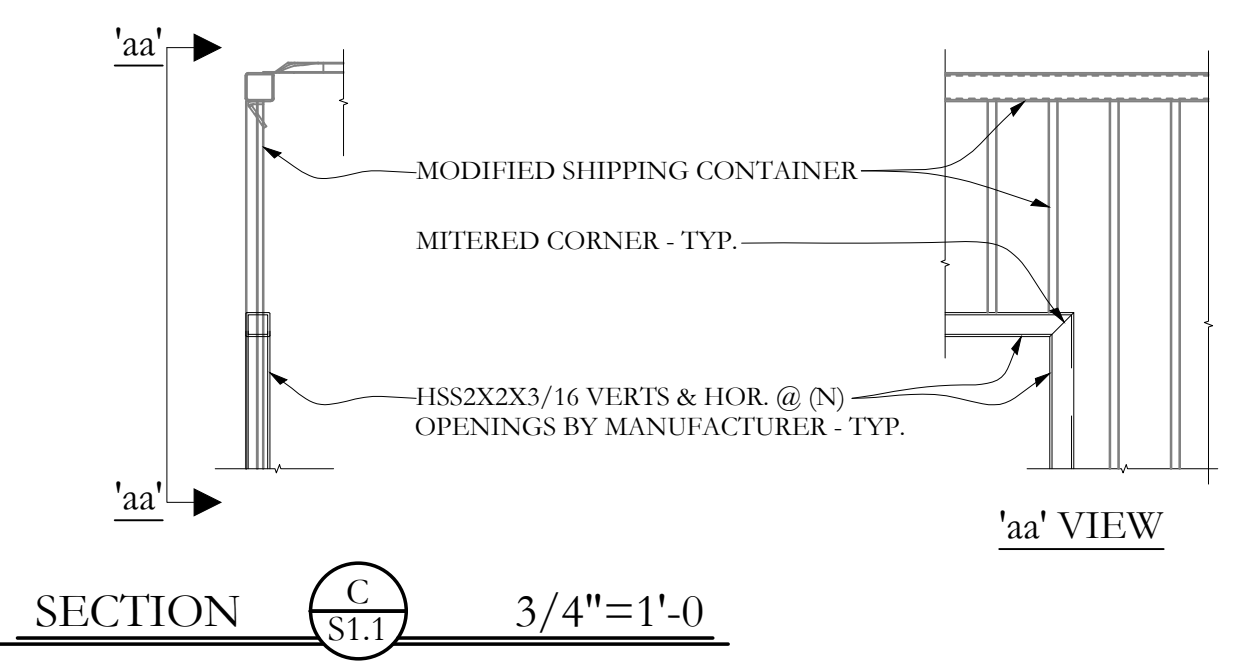
MODIFIED SHIPPING CONTAINER PLAN

NOTES:
 1. SHIPPING CONTAINERS ARE TO BE STRUCTURALLY SOUND WITHOUT MAJOR DENTS, OR SUBSTANTIAL RUST TO FRAME OR STRUCTURAL METAL SHEATHING.

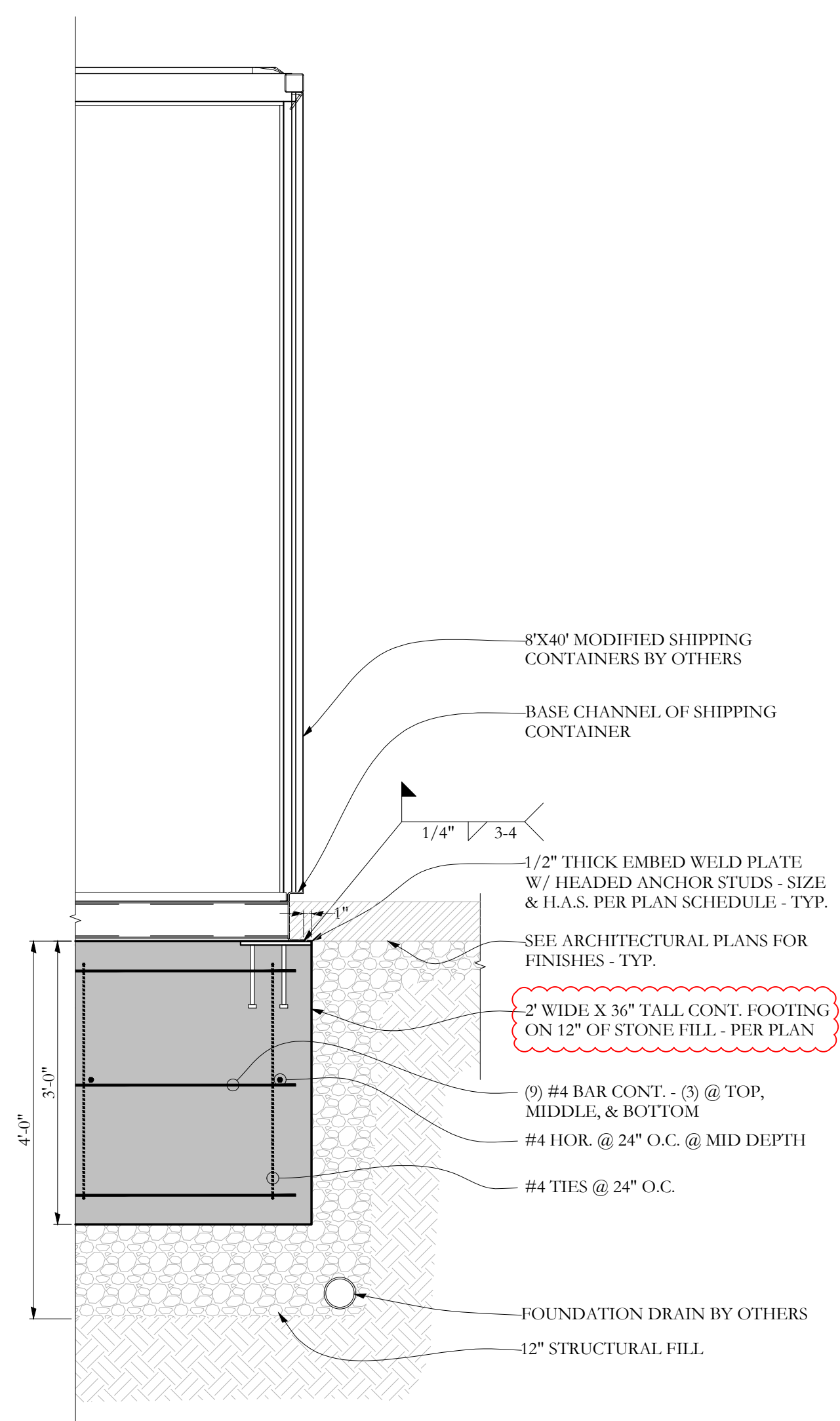


- ① = 9X12X1/2" EMBED PLATE W/ (4) 1/2" Ø X 8" HEADED ANCHOR STUDS - (15) LOCATIONS
- ② = 12" Ø X 1/2" THICK EMBED PLATE W/ (4) 1/2" Ø X 8" HEADED ANCHOR STUDS - (6) LOCATIONS

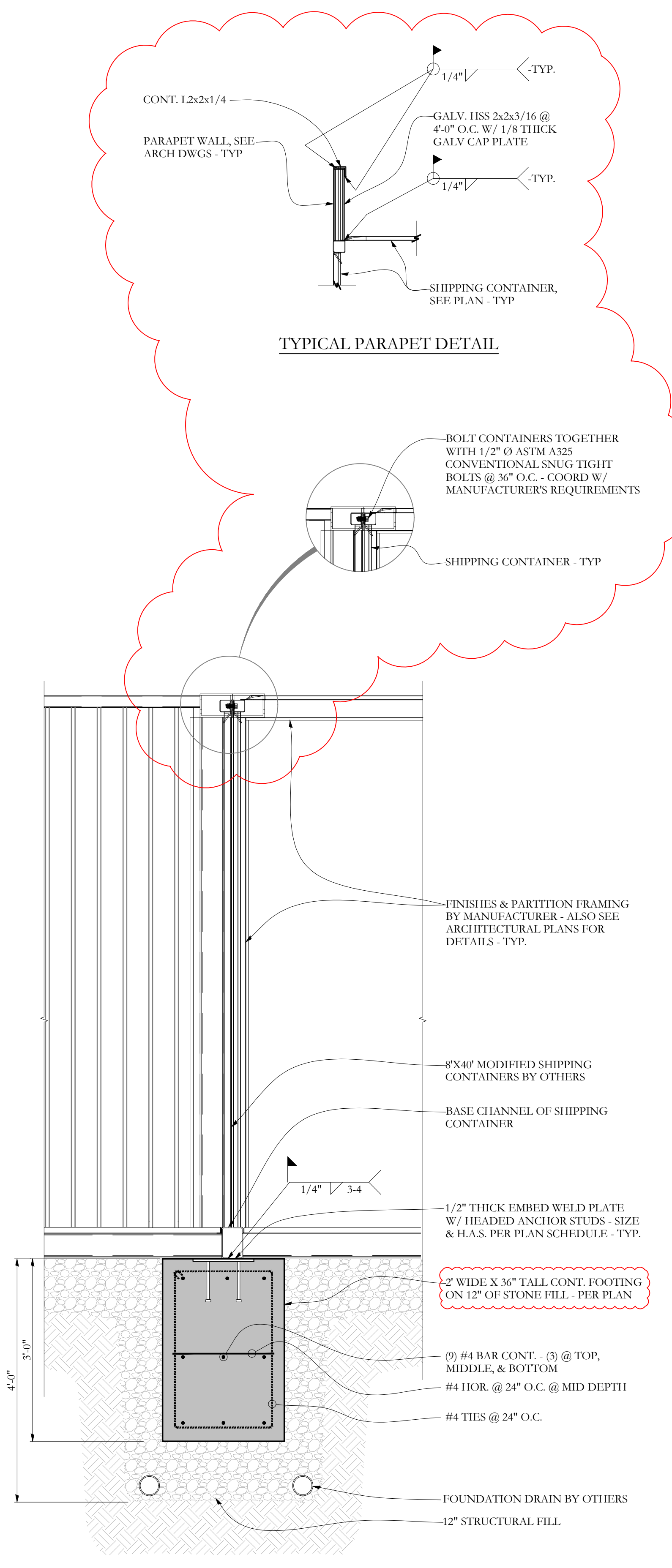
BACKGROUND UPDATED



SECTION C-S1.1 3/4"=1'-0



SECTION A-S1.1 3/4"=1'-0



SECTION B-S1.1 3/4"=1'-0

Structural Integrity
 Consulting Engineers, Inc.
 77 Oak Street
 Portland, ME, 04101
 p. 207-774-4634
 f. 866-793-7835
 www.structuralintegrity.com
 BUILD WITH CONFIDENCE
 © 2012 Structural Integrity Consulting Engineers, Inc.
 SI Job# 16-0113

STATE OF MAINE
 AARON C. JONES
 No. 10968
 LICENSED PROFESSIONAL ENGINEER
 Oct. 18th, 2016

93 Washington Ave.
 Portland, Maine

Document Title:
 Shipping Container Building Foundation, Stairs & Deck Structural Drawings

Sheet Title:
 FOUNDATION / DECK PLAN

Scale: AS NOTED

Date: 10/18/2016

Revisions
 ① 3/24/2017
 ② 8/14/2017

Sheet

S1.1