

© 2016 RYAN SENATORE ARCHITECTURE

93 WASHINGTON AVE.
PORTLAND, MAINE



RYAN SENATORE ARCHITECTURE
565 CONGRESS STREET
PORTLAND, MAINE 04101
207-650-6414
senatorearchitecture.com

CONSULTANTS:

REVISIONS:

DATE: JULY 26, 2016

PROJECT No. 1626

DRAWN BY: RJS / RRT

CHECKED BY: RJS

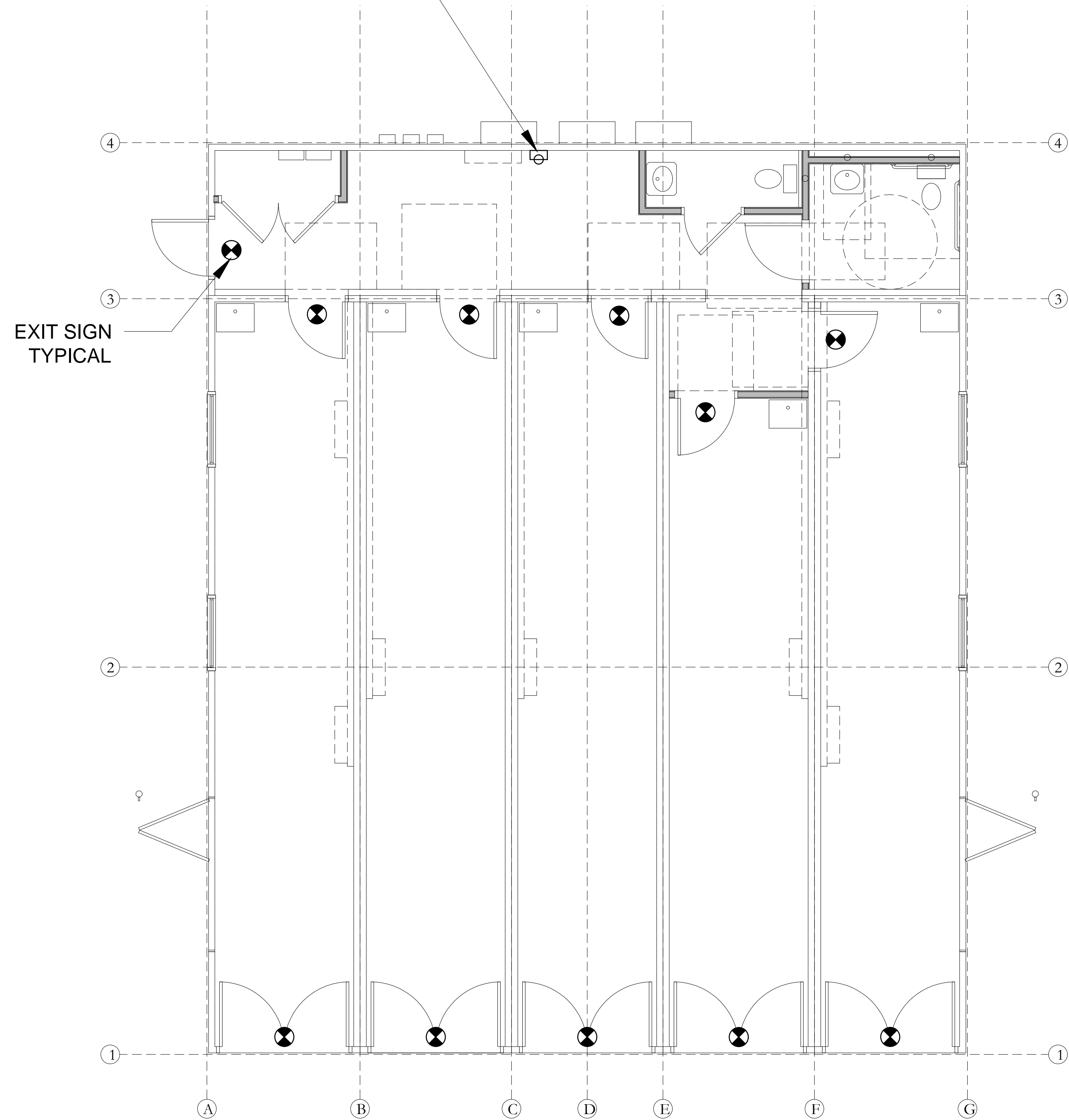
SCALE: AS NOTED

SHEET TITLE:
CODE REVIEW PLAN

G1-1

FIRE EXTINGUISHER AND CABINET

EXIT SIGN TYPICAL



1 CODE REVIEW PLAN
1/4" = 1'-0"